



KELLERWILLIAMS

# TUSTIN FINANCIAL PLAZA



**TUSTIN FINANCIAL PLAZA**

17772, 17782, 17822, 17852, 17862 East 17th Street



## PROJECT DETAILS

- Tustin's premier neighborhood office complex.
- Five-building office complex centrally located in Orange County.
- Offers unmatched amenity base within walking distance to banks, grocery stores, restaurants, coffee shops, gyms and more.
- Located within minutes to the (I-5) Santa Ana, (55) Newport/Costa Mesa and (22) Garden Grove Freeways and within close proximity to the John Wayne/ Orange County Airport.
- On-site features include abundant free parking, maintenance, and janitorial services that are provided daily.

## ON- SITE AMENITIES

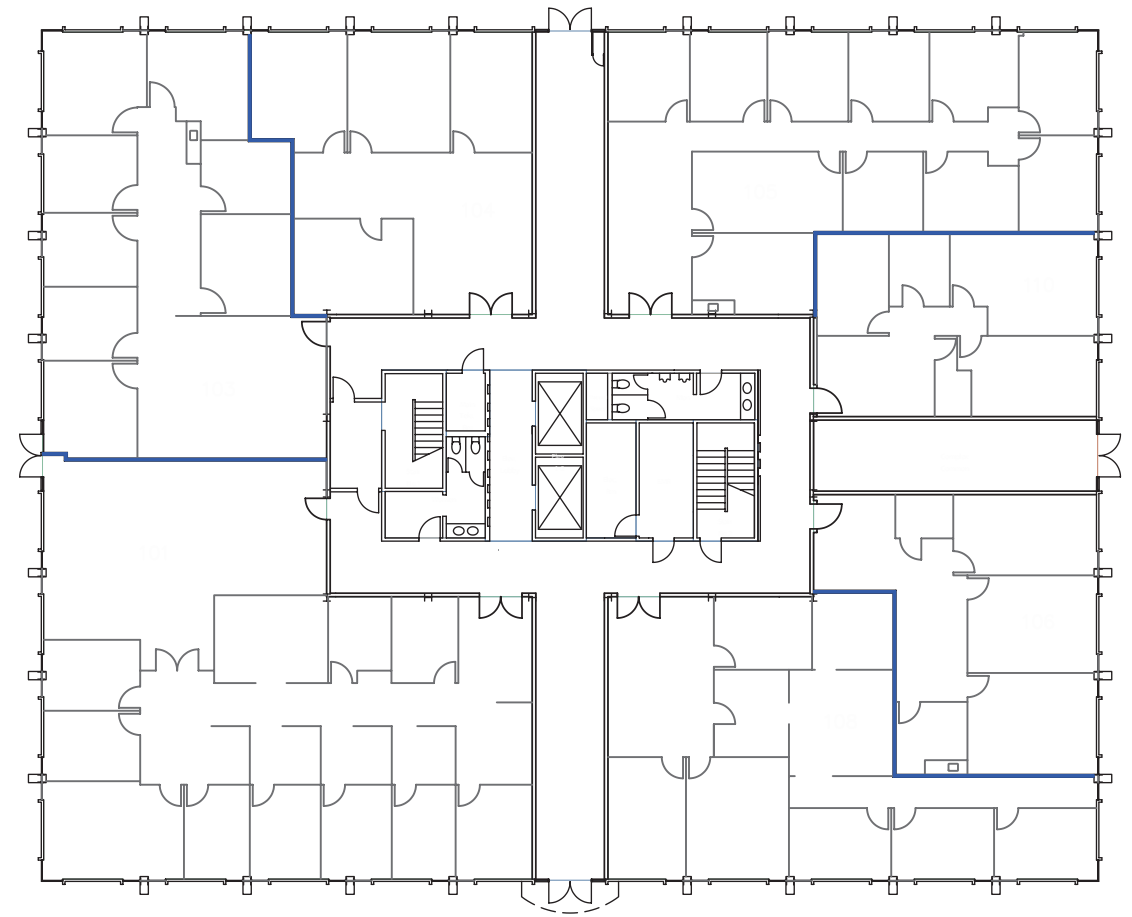
- Building top signage available
- Spec suites available
- Professional on-site management
- Janitorial services provided daily
- Immaculately kept landscaping
- Easy access to major freeways
- Professional office environment
- Sophisticated lobbies & entrances
- Abundant free parking
- On-site conference center



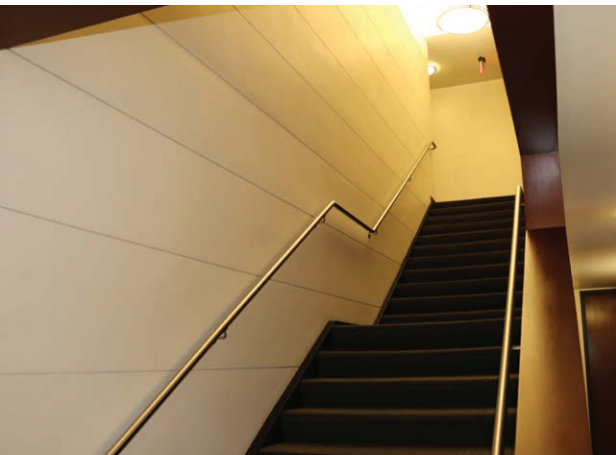




FLOOR PLATE IMAGE  
NOT TO SCALE

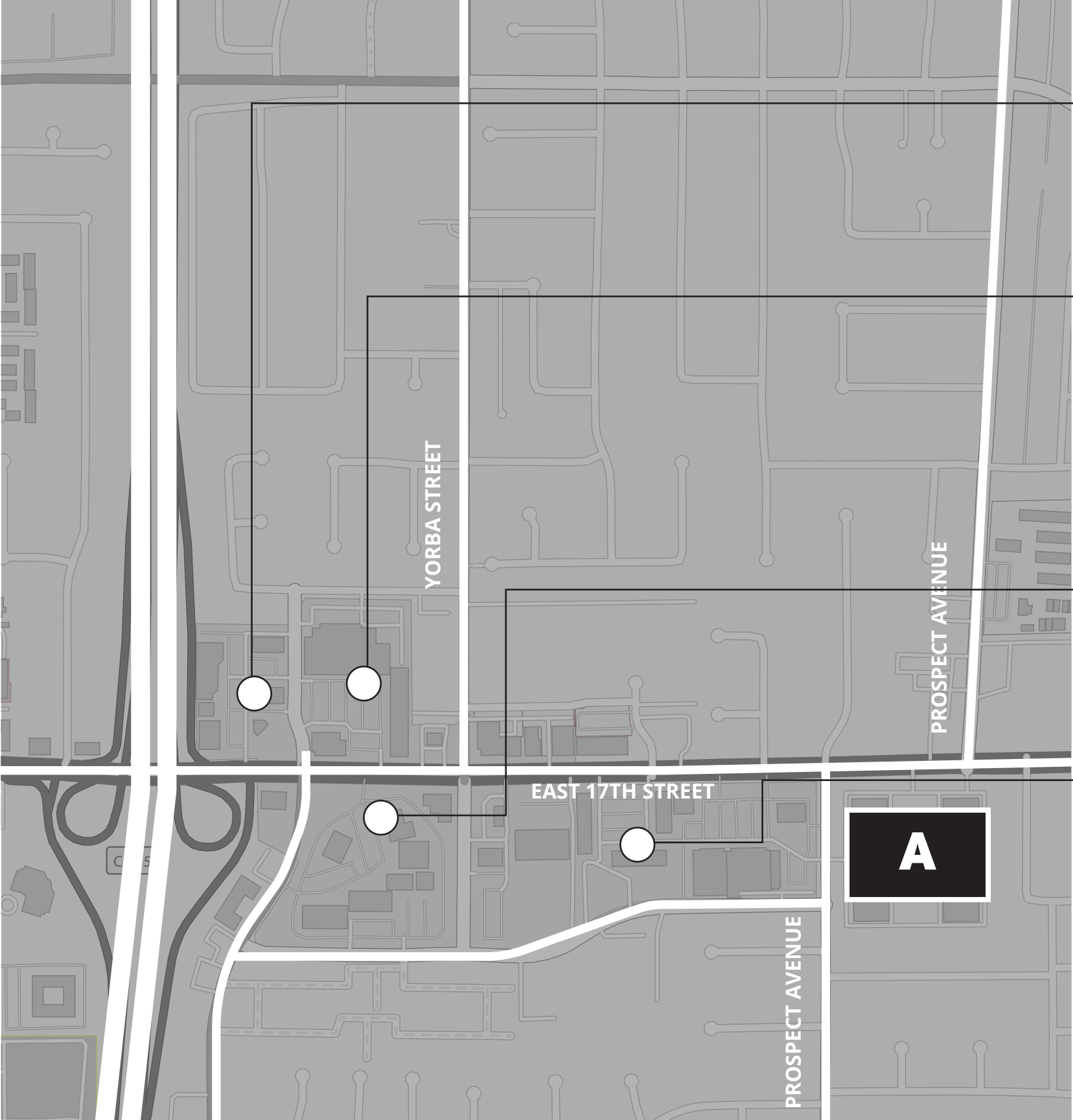


Typical Floor Plate



# LOCATION

Companies that office with us in Tustin Financial Plaza are primely located via immediate access to the 55 Freeway. This provides a location that is convenient for all their employees, whether they live in North, South or Central Orange County. We are also located in the highly amenitized corridor of 17th Street that offers dining, shopping and fitness options within walking distance or just a short drive.



## MIMI'S PLAZA

- MIMI'S CAFE
- CHEVRON
- FEDEX OFFICE
- OC FIT
- SAKE 2 ME SUSHI

## TUSTIN'S FRENCH QUARTER

- STARBUCKS
- SUBWAY
- CHASE ATM
- ONE WEST BANK
- MARSHALLS / HOME GOODS
- DOLLAR TREE
- DICKIE'S BARBEQUE
- PURE BARRE

## ENDERLE CENTER

- ZOV'S
- 17TH STREET GRILL
- THE CRAB COOKER
- EL TORITO
- 76 GAS

## OAK TREE PLAZA

- TACO BELL
- FLAME BROILER
- TUSTIN FITNESS
- CITI BANK
- CVS



**FOR MORE INFORMATION PLEASE CONTACT  
A STREET PARTNERS AT 949 381 5100  
OR VISIT ASTREETPARTNERS.COM**

**BLAINE ANNETT**

PARTNER

blaine@astreetpartners.com  
License No. 01861733

**MORGAN LIEBER**

SENIOR ASSOCIATE

morgan@astreetpartners.com  
License No. 01967995

**MATT LAWER**

ASSOCIATE

matt@astreetpartners.com  
License No. 02100879

**A STREET  
PARTNERS**

