

Met.

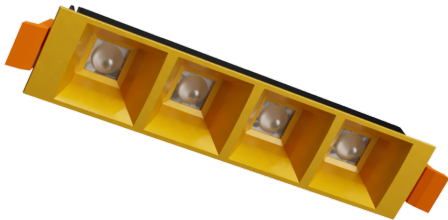
iSIGHT
DATA SHEET

Met.

iSIGHT-S

APPLICATIONS

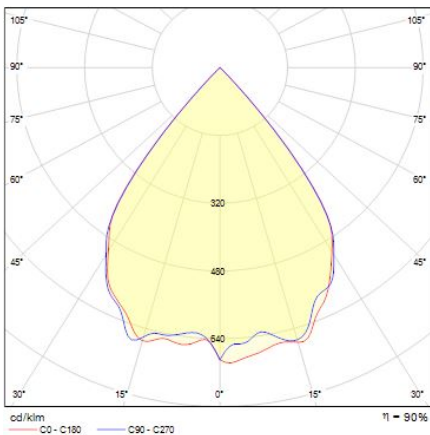
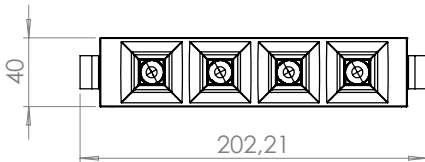
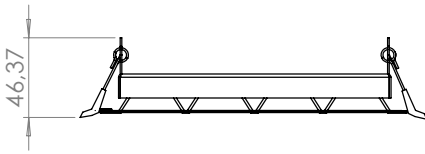
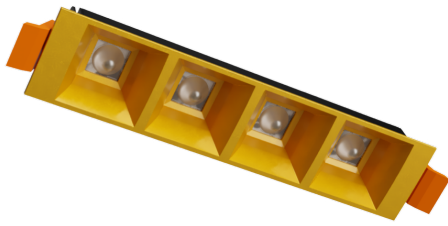
Retail Lighting
Office Lighting
General Lighting
Area Lighting
Hotel Lighting
Façade Lighting



Model Number:	D5005-3-1704T- - - D580TRA1E
Light Source:	LED
Luminaire total power (W):	5W
Lamp luminous flux*:	800 lm
Luminaire luminous flux*:	721 lm
Luminaire efficacy*:	144 lm/W
Power Factor:	>0.95
Beam Angle:	80°
Luminaire case temperature @ 25° C ambient temperature:	<40°
UGR Based on Illumination system design:	<25
Rated useful life*:	L80 50000 hour
Correlated colour temperature*:	3000 Kelvin
Colour Rendering Index min:	Ra > 90
Chromaticity tolerance (initial MacAdam)*:	5
Body Construction:	Stainless Steel
Finish:	Powder Coated
Lens Cover:	PC & PMMA
Built-in driver protection:	Voltage fluctuation, overheating, short circuit, overloads, voltage spikes up to 3.5kV
Flicker Free control system (No Stroboscopic effect):	Yes
Additional surge protection:	No
Environmental ambient temperature:	5° C to +30° C
Rated supply voltage:	220-240 V
Mains frequency:	50 / 60 Hz

Met.

iSIGHT-S



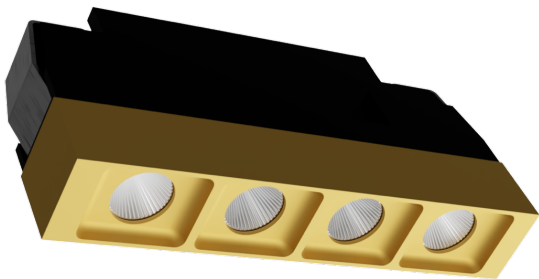
Mounting type:	Recessed
Adjustable Tilt:	No
Electrical Connection type:	.5m cable with leads
Mechanical impact protection:	IK 02
Degree of protection:	IP 20
Class of protection:	Class II
Body Colour:	Rich Metallic Gold
Cut-out:	40mm X 168mm
Dimensions:	203mm X 40mm X 47mm
Weight :	+/- .80kg
Dimming:	Optional
Emergency Backup:	Optional
Quality management traceability:	Serialisation, Track and Trace
Spares availability post purchase :	5 Years
Serviceable for repairs and maintenance:	Yes
Upgradable:	No
Approximate product life base on 12hour usage:	5 Years
Warranty :	Limited Three-year/50000-hour Warranty (degradation based on LM-80 - TM-21 @ 85°)
Performance Warranty :	No
Country of origin :	South Africa

Met.

iSIGHT- S+

APPLICATIONS

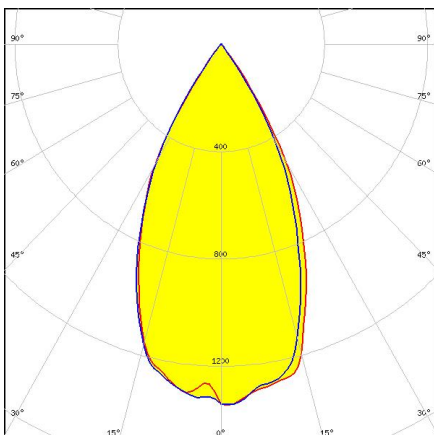
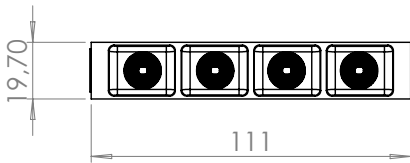
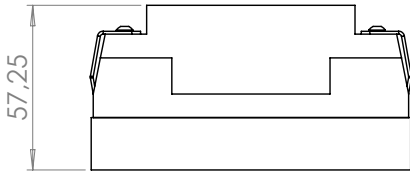
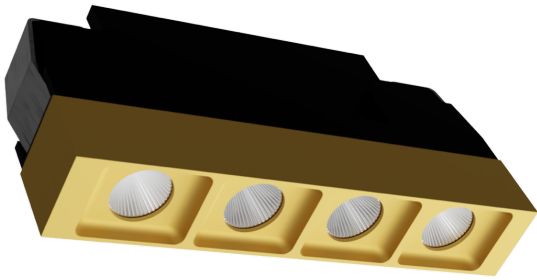
Retail Lighting
Office Lighting
General Lighting
Area Lighting
Hotel Lighting
Façade Lighting



Model Number:	D5545-3-1102C082IL90TIA1E
Light Source:	LED
Luminaire total power (W):	5.6W
Lamp luminous flux*:	827 lm
Luminaire luminous flux*:	653 lm
Luminaire efficacy*:	118 lm/W
Power Factor:	>0.95
Beam Angle:	49°
Luminaire case temperature @ 25° C ambient temperature:	<40°
UGR Based on Illumination system design:	<20
Rated useful life*:	L80 50000 hour
Correlated colour temperature*:	3000 Kelvin
Colour Rendering Index min:	Ra > 90
Chromaticity tolerance (initial MacAdam)*:	5
Body Construction:	Aluminum
Finish:	Anodise
Lens Cover:	ABS
Built-in driver protection:	Voltage fluctuation, overheating, short circuit, overloads, voltage spikes up to 3.5kV
Flicker Free control system (No Stroboscopic effect):	Yes
Additional surge protection:	No
Environmental ambient temperature:	5° C to +30° C
Rated supply voltage:	220-240 V
Mains frequency:	50 / 60 Hz

Met.

iSIGHT- S+



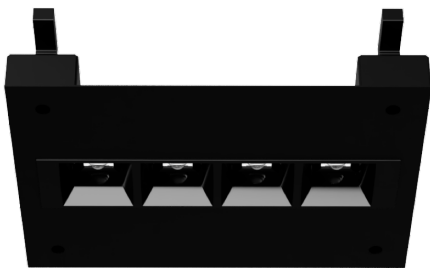
Mounting type:	Recessed
Adjustable Tilt:	No
Electrical Connection type:	.5m cable with leads
Mechanical impact protection:	IK 02
Degree of protection:	IP 20
Class of protection:	Class II
Body Colour:	Metallic Gold
Cut-out:	19mm X 110mm
Dimensions:	111mm X 20mm X 57mm
Weight :	+/- .250kg
Dimming:	Optional
Emergency Backup:	Optional
Quality management traceability:	Serialisation, Track and Trace
Spares availability post purchase :	5 Years
Serviceable for repairs and maintenance:	Yes
Upgradable:	No
Approximate product life base on 12hour usage:	5 Years
Warranty :	Limited Three-year/50000-hour Warranty (degradation based on LM-80 - TM-21 @ 85°)
Performance Warranty :	No
Country of origin :	South Africa

Met.

iSIGHT- S+B

APPLICATIONS

Retail Lighting
Office Lighting
General Lighting
Area Lighting
Hotel Lighting
Façade Lighting



Model Number:	PT 03659
Light Source:	LED
Luminaire total power (W):	5W
Lamp luminous flux*:	800 lm
Luminaire luminous flux*:	721 lm
Luminaire efficacy*:	144 lm/W
Power Factor:	>0.95
Beam Angle:	80°
Luminaire case temperature @ 25° C ambient temperature:	<40°
UGR Based on Illumination system design:	<25
Rated useful life*:	50000 hour based on LM-80 - TM-21 @ 85°
Correlated colour temperature*:	3000 Kelvin
Colour Rendering Index min:	Ra > 90
Chromaticity tolerance (initial MacAdam)*:	5
Body Construction:	Stainless Steel
Finish:	Powder Coated
Lens Cover:	PC & PMMA
Built-in driver protection:	Voltage fluctuation, overheating, short circuit, overloads, voltage spikes up to 3.5kV
Flicker Free control system (No Stroboscopic effect):	Yes
Additional surge protection:	No
Environmental ambient temperature:	5° C to +30° C
Rated supply voltage:	220-240 V
Mains frequency:	50 / 60 Hz

Met.

iSIGHT- S+B



Mounting type:	Baffle Ceiling Mounting Plate
Adjustable Tilt:	No
Electrical Connection type:	.5m cable with leads
Mechanical impact protection:	IK 02
Degree of protection:	IP 20
Class of protection:	Class II
Body Colour:	Etch Black
Cut-out:	200mm X 145mm
Dimensions:	200mm X 145mm X 32mm
Weight :	+/- .80kg
Dimming:	Optional
Emergency Backup:	Optional
Quality management traceability:	Serialisation, Track and Trace
Spares availability post purchase :	5 Years
Serviceable for repairs and maintenance:	Yes
Upgradable:	No
Approximate product life base on 12hour usage:	5 Years
Warranty :	Limited Three-year/50000-hour Warranty (degradation based on LM-80 - TM-21 @ 85°)
Performance Warranty :	No
Country of origin :	South Africa

