

THE PROFESSIONAL BUILDING

127 W HARGETT STREET

FOR LEASE

OFFICE SPACE

DOWNTOWN RALEIGH



SUITE 600: 5,877 SF

- Built in 1925, The Professional Building is listed on the National Register of Historic Places
- Open concept floor plan with two private offices ideal for tenants of various sizes
- Great location in the heart of downtown Raleigh near plenty of shops and restaurants, and a few blocks from the state legislature building
- Tenants include professional and nonprofit organizations

FOR LEASING AND AVAILABILITY

commercial@empire1792.com | 919-834-8350
Empire Brokerage Services, Inc.



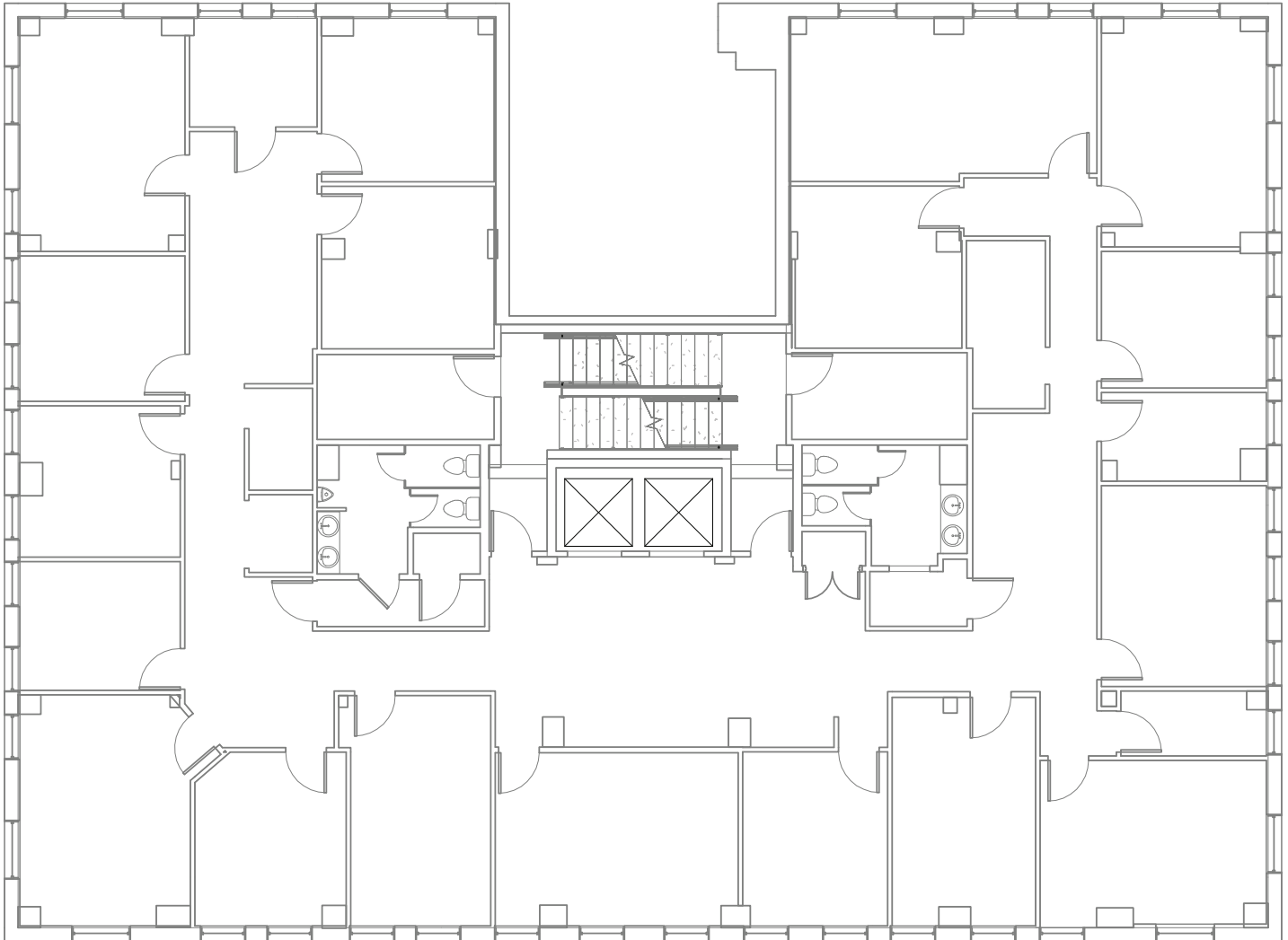
THE PROFESSIONAL BUILDING

127 W HARGETT STREET

FOR LEASE

OFFICE SPACE

DOWNTOWN RALEIGH



FOR LEASING AND AVAILABILITY

commercial@empire1792.com | 919-834-8350
Empire Brokerage Services, Inc.



THE PROFESSIONAL BUILDING

127 W HARGETT STREET

FOR LEASE

OFFICE SPACE

DOWNTOWN RALEIGH



FOR LEASING AND AVAILABILITY

commercial@empire1792.com | 919-834-8350
Empire Brokerage Services, Inc.



THE PROFESSIONAL BUILDING

127 W HARGETT STREET

FOR LEASE

OFFICE SPACE

DOWNTOWN RALEIGH



FOR LEASING AND AVAILABILITY

commercial@empire1792.com | 919-834-8350
Empire Brokerage Services, Inc.



THE PROFESSIONAL BUILDING

127 W HARGETT STREET

FOR LEASE

OFFICE SPACE

DOWNTOWN RALEIGH



FOR LEASING AND AVAILABILITY

commercial@empire1792.com | 919-834-8350
Empire Brokerage Services, Inc.



THE PROFESSIONAL BUILDING

127 W HARGETT STREET

FOR LEASE

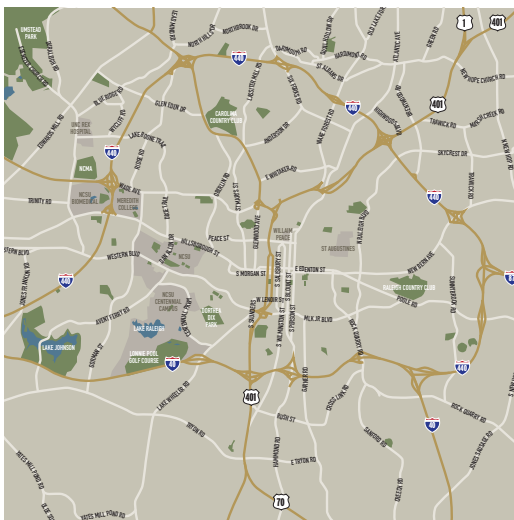
OFFICE SPACE

DOWNTOWN RALEIGH



LOCATION

- Centralized, downtown location on Hargett Street near the City Plaza, Nash Square, Moore Square, and NC State Capitol
- Three parking decks within 1 block radius
- Steps from restaurant and entertainment amenities



FOR LEASING AND AVAILABILITY

commercial@empire1792.com | 919-834-8350
Empire Brokerage Services, Inc.

