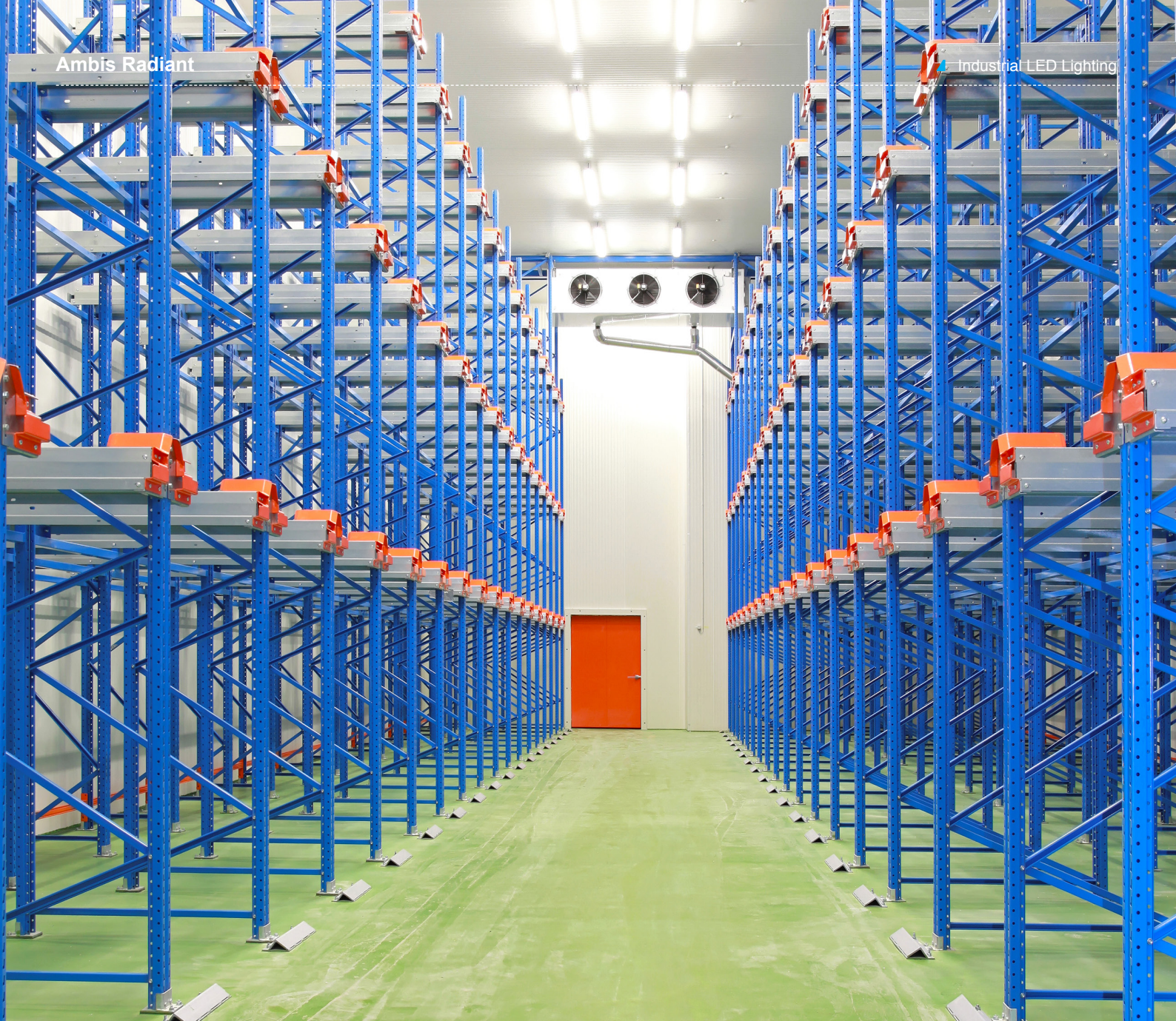




Ambis Radiant

Industrial LED Lighting

Ambis Radiant is an IP66 waterproof LED luminaire designed to perform in ambient conditions from -30°C to +40°C in industrial environments. The unique features of Ambis Radiant are the easy-click fixation technique and tough-wiring for a simple installation, the uniform illuminance, as well as the robust IP66-rated and IK10-rated design. Ambis Radiant is ideal LED replacement for T8/T5 fluorescent tubes.



Applications

Ambis Radiant is a functional LED luminaire that can directly replace T8/T5 fluorescent tubes. The compact, but robust design offers great versatility in applications, including warehouses and cold storage rooms.



Cold Storage



Industrial



Warehouse



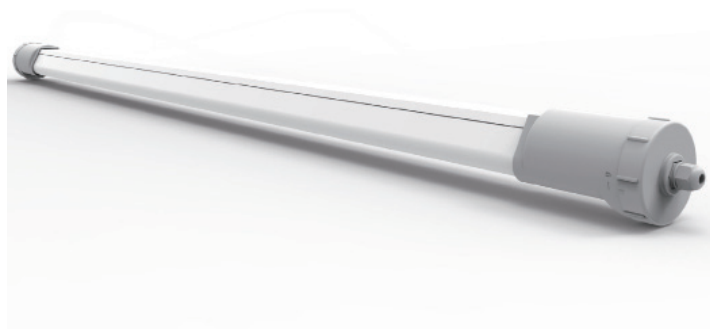
Work Area

Features and Benefits

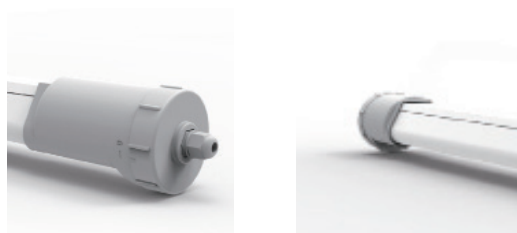
- High efficiency up to 125 lm/W
- Electrical installation with through-wiring for linking luminaires (up to 6 / 9 / 14 per circuit)
- Easy-click fixation technique and mounting clips for convenient installation
- Uniform and wide light distribution with backward lighting
- IP66 dust and water protection rating
- IK10 impact resistance rating
- Life-time L80B10 >50,000 hours
- Operating in extreme ambient conditions -30°C to +40°C

Standards and directives

Ingress Protection (IP) rating	IP66
Impact Resistance (IK) rating lens	IK10
Impact Resistance (IK) rating housing	IK10
Surge Protection (kV)	IEC61000-4-5 (L/N)1KV
	4kV high-pot voltage insulation
Electrical safety classification	Class II
Low Voltage Directive (LVD)	2014/35/EU
Electromagnetic Compatibility Directive (EMC)	2014/30/EU
Compliance with standards	EN60598-1 EN60598-2-1 EN62471 IEC TR62778 EN62493 EN55015 EN61547 EN61000-3-2 EN61000-3-3
European energy efficiency directives EELP, EPB, EuP	N/A
Quality and safety marks (e.g. VDE, CE, ENEC, etc.)	CE/TUV
ATEX classification (Zone 0, 1, 2, etc.)	N/A
Flammability test (glow wire)	850°C
Other tests and certifications	IP66 to EN60529 IK10 to EN50102
Warranty	5 years

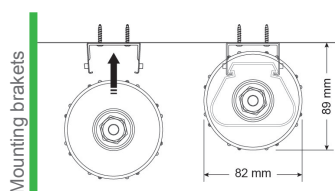


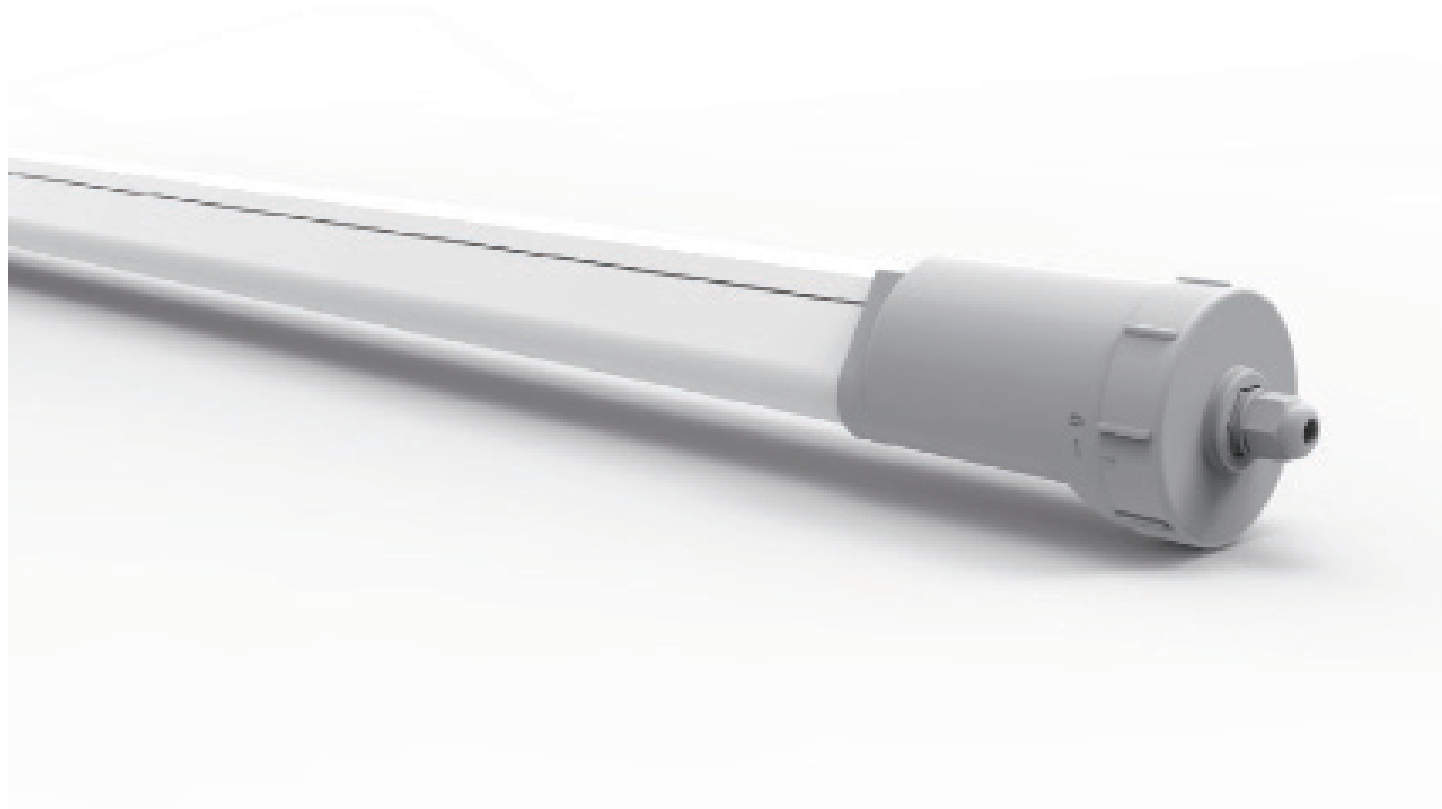
Product view



Installation and options

Mounting options	Ceiling mount with brackets
Electrical installation (e.g. through-wiring, connectors)	Clamp connectors
Entries	Two-wire or three-wire conductors cable with diameter range from 6.8 to 10.1mm The suggested insertion length from cable gland to connector is around 25mm
Max. luminaires per circuit	6 (60W) 9 (48W) 14 (28W)
Applications	Cold storage Warehouse Working area Industrial sites

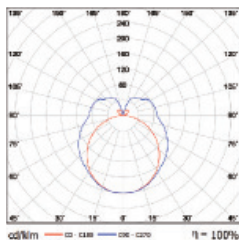




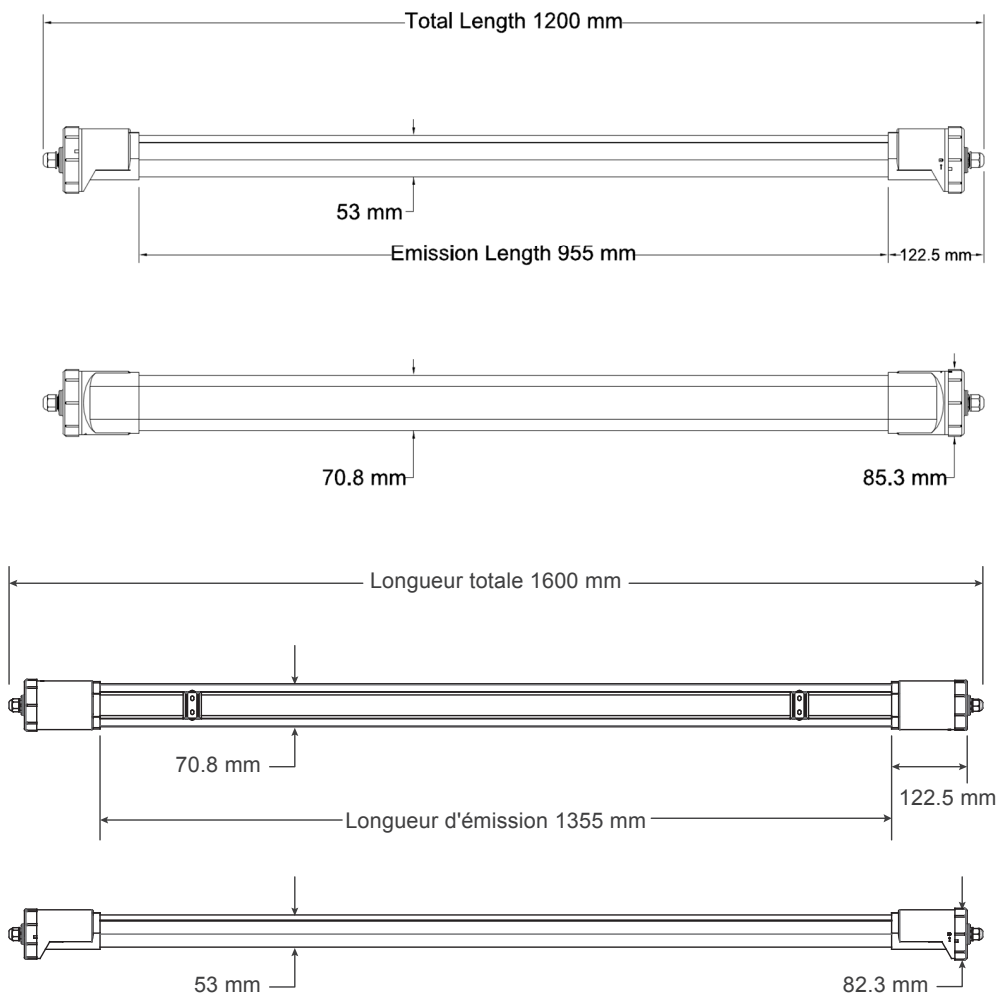
Technical specifications

Power ranges (W)	28W±10% tolerance 48W±10% tolerance 60W±10% tolerance
Input Voltage (V)	220~240VAC
Lumen output range (lm)	3500lm±10% tolerance 6000lm±10% tolerance 7500lm±10% tolerance
Efficacy (lm/W)	125lm/W
Power Factor	>0.9
THD (total harmonic distortion)	<20%
Harmonics	IEC61000-3-2
Driver efficiency and mounting	AC to DC efficiency >90% (built-in driver)
LEDs (e.g. COB, PCB, module)	Chip LED (LUMILEDS 2835)
Color Rendering Index (CRI)	>80
Correlated Color Temperature (CCT)	3985 ±275K
UGR	<30
MacAdam ellipse tolerance	4-steps
Operating temperature °C	-30°C~+40°C
Service lifetime (L70/L80/L90)	50,000hr / L80B10

Optical characteristics

Optical system	Diffuser
Beam angle(s)	158°
Light distribution	Wide
Light distribution graphics	 <p>Horizontal Angle: 110°</p> <p>Vertical Angle: 158°</p>

Product dimensions



Physical properties

Dimensions (L x W x H mm)	1200 x 82.3 x 82.3 mm
	1600 x 82.3 x 82.3 mm
Weight (kg)	1.0Kg(1.2m)
	1.4Kg (1.6m)
Shipment weight (kg)	1.3Kg per carton(1.2m)
	1.8Kg per carton(1.6m)

Physical properties

Packaging	1 pcs luminaire per box 15pcs luminaire per carton Standard accessories per luminaire: 2 pcs mounting brackets and 1 pc sealing plug
-----------	--

Accessories



Materials, colors and variations

Materials (housing)	Polycarbonate (PC)
Materials (lens)	Polycarbonate (PC)
Materials optical cover	Polycarbonate (PC)
Materials seal	Silicone rubber and NBR
Surface finish and color	Opal for light emission area and light gray for end caps

Order references

	PG428ILF1N	PG548ILF1N	PG560ILF1N
Type of Product	Industrial Application		
Product variation	1200mm	1600mm	1600mm
Lumen Output (lm)	3500	6000	7500
Input Voltage (V)	CA 220 / 240V		
Power (W)	28	48	60
Efficacy (lm/W)	125		
CRI (Ra)	80		
CCT (K)	4000 ± 250K (4 MacAdam)		
Operating Temp (°C)	-30°C to 40°C		
Max. units per circuit	14	9	6
Electrical safety class.	Class II		
Protection	IP66 / IK10		
Lifetime	50.000 hr / L 80 B10		
Warranty	5 Years		
Weight (kg)	1	1.3	

Delta Electronics Europe

Zandsteen 15

2132 MZ Hoofddorp, The Netherlands

TEL: +31-20-655-0900

FAX: +31-20-655-0999

For more product information and sales inquiries,
please contact sleu@deltaww.com
www.delta-emea.com/ledlighting

