

LED-Sheet Steel Light Fitting Series 190...

Applications:

Industrial, craftsmen and commercial facilities with extreme conditions, aggressive environments (e.g. oil, grease) or high mechanical exposure, paint shops and spray booths (non-hazardous areas).

Design:

Housing: Sheet steel, light grey, powder coated (RAL 7035).

Safety glass: Frameless, clear, internal hinges, tiltable.

Reflector: Aluminium painted, with LED-modules, glare limitation modules and all electrical components screwed to

the glass.

Central locking: Internal, to be opened from outside with 5mm allen key, inner hinges on the opposite side.

Terminal: 5-pole terminal, clamping range 2.5 mm² max.

Cable entries: 3 x M20 or 3 x M25 (2 cable gland and 2 blanking plugs), looping the cable at one side possible.

Mounting:

2 fixing holes Ø 9mm,
Sealing and pressure disks included.
Use mounting screws Ø 6mm.

Technical data:

LED: Line-modules 4,000K; CRI>80, lifetime L₉₀ > 50.000h at 25°C ambient temperature, lifetime L₈₀ > 70,000h at max. ambient temperature

ECG: 220-240V, 50/60Hz, overload and short circuit protection

Ambient temperature: -20°C up to see table of article

Options:

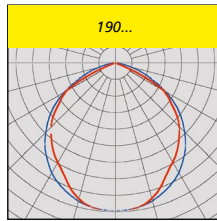
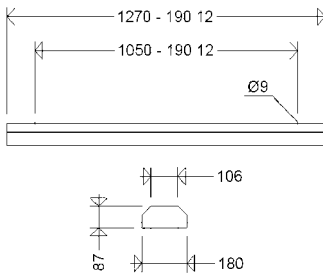
- with dimming function via DALI2 interface, compatible with LIMAS Line (DIMD) Light Management System
- in stainless steel, powder coated
- for connection to group or central battery systems (ZB) or emergency mains respectively

Note:

This light fitting is not suitable for application in areas with permanent high humidity in combination with only short periods of operation, such as sewage or stormwater retention bassins or water treatment plants.

Note:

In case of permanently humid atmosphere please ask for stainless steel housings.



Product highlights:

- extremely flat and robust design
- smooth sheet steel housing without contamination-prone external locking parts
- comfortable central locking system with internal hinges
- reflector and cover in sandwich design to protect the LED-Modules from mechanical or electrostatic damages due to accidental contact
- homogeneous illumination by using glare limitation modules, no particular light points visible, comfortable perception of light, brilliant glare limitation
- high colour rendering CRI > 80, according to the work place guidelines suitable for nearly all branches
- with Ψ-sign, therefore suitable for application in rooms/locations with increased fire risk due to flammable dusts and fibers.
- future-proof due to use of standardized LED-modules (Zhaga)



Article no.	Type	Quantity of ECG	Power consumption [W]	Luminous flux [lm]	Luminous efficacy [lm/W]	Ambient temperature max.[°C]	Substitute for ca. *	Weight [kg] without packing material
19002 0014	190 12L40	1	32	4.330	135	60	1 x 36 / 1 x 58	8,5
19002 0015	190 12L60	1	46	6.200	135	55	2 x 36 / 2 x 58	8,7

190...



* The given information is for rough orientation only. In each individual case a lighting calculation is necessary.

Accessories / Spare Parts

Article No.	Type	
Spare glass clear		
19001 9002	190 28/54	for 190 12...
Cable entries		
25610 9000	2561	plastic cable gland M20 x 1,5
25730 9000	2573	threaded blanking plug M20x1,5
Mounting accessories		
26000 0004	W 26 P	1 pair wall angle brackets
26000 0002	W 26/30 P	1 pair wall angle brackets 30°
26000 0003	W 26/45 P	1 pair wall angle brackets 45°
90000 0002	15A P	1 pair ceiling brackets, galvanized steel
90032 0002	15AV P	1 pair ceiling brackets, stainless steel

Properties, limitations and details for controlling LED-light fittings:

See "Technical Supplement"

All data are correct at the time of printing. Actual technical data can be found under www.schuch.de.