

Extremely robust Dustproof/Waterproof LED-Light Fitting with Central Locking System Series 144 ...

Applications:

In humid, wet and dusty indoor areas and roofed outdoor areas with high mechanical strains as well as areas where any external clips are not wanted or where such clips could create problems. Hard to reach areas and areas with high downtime and maintenance cost when replacing the lamps, Food industry and food processing industry etc. (Aggressive atmospheres: Please consult us).

Design:

Housing: Glass fibre reinforced polyester resin.

Diffuser: Polycarbonate, clear with internal prisms, hinged.

Gasket: Silicone.

Reflector: Aluminium painted, hinged and removable. Elements for glare limitation mounted to the reflector.

Central locking system: Operated by a hexagonal socket key 13mm.

Connection: 3-pole terminal.

Cable entries: 3 entries

M25 x 1,5 (2 glands and 2 screw plugs). Looping the mains cable at one end of the housing up to 3 x 2,5mm² possible.

Mechanical installation: 2 suspension eyes with bolts (H8V P) or 2 ceiling brackets (15A P), see accessories.

Technical data:

LED: Linear modules 4,000K, CRI > 80, lifetime L₉₀ > 50.000h at 25°C ambient temperature, lifetime L₈₀ > 70,000h at max. ambient temperature

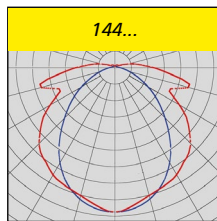
ECG: 220-240V, 50/60HZ, overload and short-circuit protection

Ambient temperature: -20°C up to see product table

Options:

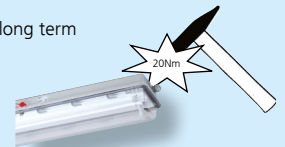
- 6.500K
- with dimming function via DALI2 interface, compatible with LIMAS Line (DIMD) Light Management System
- dimmable via „Corridor Mode“ (DIMC)
- with through wiring 2,5 sqmm

- for low ambient temperatures
- for connection to group or central battery systems (ZB) or emergency mains respectively
- emergency light version with self-contained battery

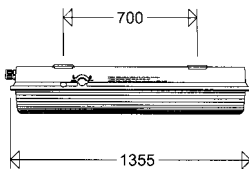


Product highlights:

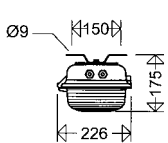
- extremely sturdy design of high mechanical and chemical resistance for a long term use in rough industrial areas:
 - housing of an impact resistance
 - polycarbonate diffuser of high impact strength
 - robust internal central locking system
 - highly resistant silicone gasket of dimensional stability for permanently safe tightness (IP66)
- **highest efficiency** due to use of top-quality ECGs and LED modules
- **homogeneous illumination by using elements for glare limitation**, no particular light points visible, comfortable perception of light, brilliant glare limitation
- **high colour rendering CRI > 80**, according to the workplace guide lines suitable for nearly all plant locations
- **with Ψ-sign**, suitable for rooms with increased fire risk due to deposits of combustible dust and fibrous materials
- best suitable in the food industry and in the food processing industry especially in risky areas falling under the IFS standards (International Featured Standard Food)
- with adapter gland with pressure compensation prevents condensation water allowing an application in all unprotected outdoor areas (Versions AUS)
- easy to install and maintain:
 - time saving easy mechanical installation by means of eye bolts or ceiling brackets without opening the light fitting
 - time saving central locking system and hinged diffuser
- ECG and reflector with LED-modules can be replaced by qualified personnel on-site (no single use light fitting)
- future proof by using standardized LED-modules (Zhaga)



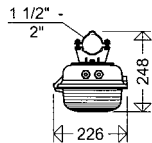
Dustproof/Waterproof Light Fittings



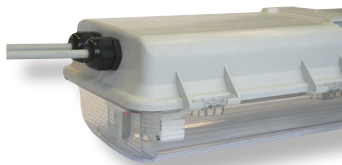
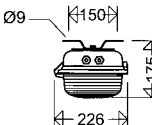
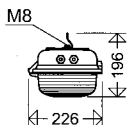
Pipe clamp mounting



Suspension eyes H8V



Ceiling brackets 15A



Looping the cable on one side:

All light fittings of series 144... have got 2 cable entries on one small side of the housing for cable looping instead of the through wiring system. This allowing a more economical cable looping at one end instead of the classical through wiring system (surcharge for 5-pole version).

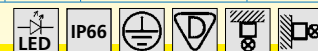
Properties, limitations and details for controlling LED-light fittings:

See "Technical Supplement"

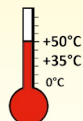
All data are correct at the time of printing. Actual technical data can be found under www.schuch.de.

Article No.	Type	Power consumption [W]	Luminous flux [lm]	Luminous efficacy [lm/W]	Amb. temp. max. [°C]	Substitute for ca. *	(without packing material)
-------------	------	-----------------------	--------------------	--------------------------	----------------------	----------------------	----------------------------

144 ..



14402 0001	144 12L22	14	2.300	164	50	1 x 36W	6,6
14402 0002	144 12L34	22	3.410	155	45	1 x 58W	6,6
14402 0003	144 12L42	29	4.280	148	40	2 x 36W	6,6
14402 0004	144 12L60	44	6.590	150	35	2 x 58W	6,6



Note:

This light fitting is not suitable for rare or occasional operation (e.g. maintenance and inspection lighting).

We recommend our series for use 107 ... G2 (PRIMO XR).

144 .. AUS



for application in unprotected outdoor areas

Applications:

Unprotected outdoor areas, especially in exposed areas with high mechanical stress (wind), catwalks, stairs, steel constructions, pipe brackets, on buildings, storage tank etc.

Design:

As standard type but with adapter gland with pressure compensation prevents condensation water.

Mounting:

Ceiling and horizontal wall mount or mounting to outreaches, poles, steel structures, catwalks, etc. by means of pipe clamps. When mounting the light fittings on bracket poles or tubular beams/pipes always use original SCHUCH pipe clamps with support.

14402 0011	144 12L22 AUS	14	2.300	164	50	1 x 36W	6,6
14402 0012	144 12L34 AUS	22	3.410	155	45	1 x 58W	6,6
14402 0013	144 12L42 AUS	29	4.280	148	40	2 x 36W	6,6
14402 0014	144 12L60 AUS	44	6.590	150	35	2 x 58W	6,6

* The given information is for rough orientation only. In each individual case a lighting calculation is necessary.

Mounting material

Suspension eyes with bolts H8V P



Ceiling brackets 15A P



Pipe clamps RO84...A P



Wall bracket W26/45 P



Further accessories such as carrier rail systems please see EX-installation material in this catalogue.

Accessories / Spare Parts

Article no.	Type	
Spare diffusers for series 144...		
84001 9004	8404 SIL	spare cover PC for 144 12L...
Cable glands/pressure compensation elements		
25600 9000	2560	ex-proof plastic cable gland M25 x 1,5
90118 9000	2538	ex-proof plastic plug M25 x 1,5
90259 9003	DAE20/25	adapter gland M20 -> M25 with pressure compensation
Mounting material		
90001 0002	H8V P	2 suspension eyes with bolts, stainless steel
90000 0002	15A P	2 ceiling brackets, hot galvanized steel
90032 0002	15AV P	2 ceiling brackets, stainless steel
90037 0004	RO84 112 A P	2 pipe clamps 1 1/2", stainless steel, with support
90038 0004	RO84 2 A P	2 pipe clamps 2", stainless steel, with support
26000 0008	W 26/L P	2 wall mounting angles, sendzimiz
26000 0002	W 26/30 P	2 wall mounting angles 30°, sendzimiz
26000 0003	W 26/45 P	2 wall mounting angles 45°, sendzimiz