

OUR PLAN TO REDUCE OUR

CLIMATE IMPACT



BIG TEAM
CHALLENGE

01. OVERVIEW

Our goal has always been to look at the health of our participants and now we're looking further at the impact of our system on the environment.



BIG TEAM CHALLENGE'S LASTING IMPACT

At Big Team Challenge we've always been focused on the wellbeing of our step challenge participants; encouraging users to increase their daily activity and stay motivated long after the challenge has ended.

However, as a company we should be trying to minimise any impact we may be having on the environment when we run our challenges.

As a technology-based company we are luckily able to keep our carbon footprint relatively low simply by requiring no manufacturing and having a workplace environment that thrives on remote working and a digital system of communication and storage.

With this comes its own hidden burdens, such as a reliance on physical technology, such as smart phones and computers, as well as large amounts of power consumption to operate the servers that power our software.

02. OUR NEW GREEN PLANS

We're partnering with some interesting companies that will help us offset any impact we might be making.



PLANTING ON BEHALF OF OUR CUSTOMERS

As of September 2022 we're launching our new initiative to begin planting one tree for every 10 active participants in any of our customers' activity challenges.

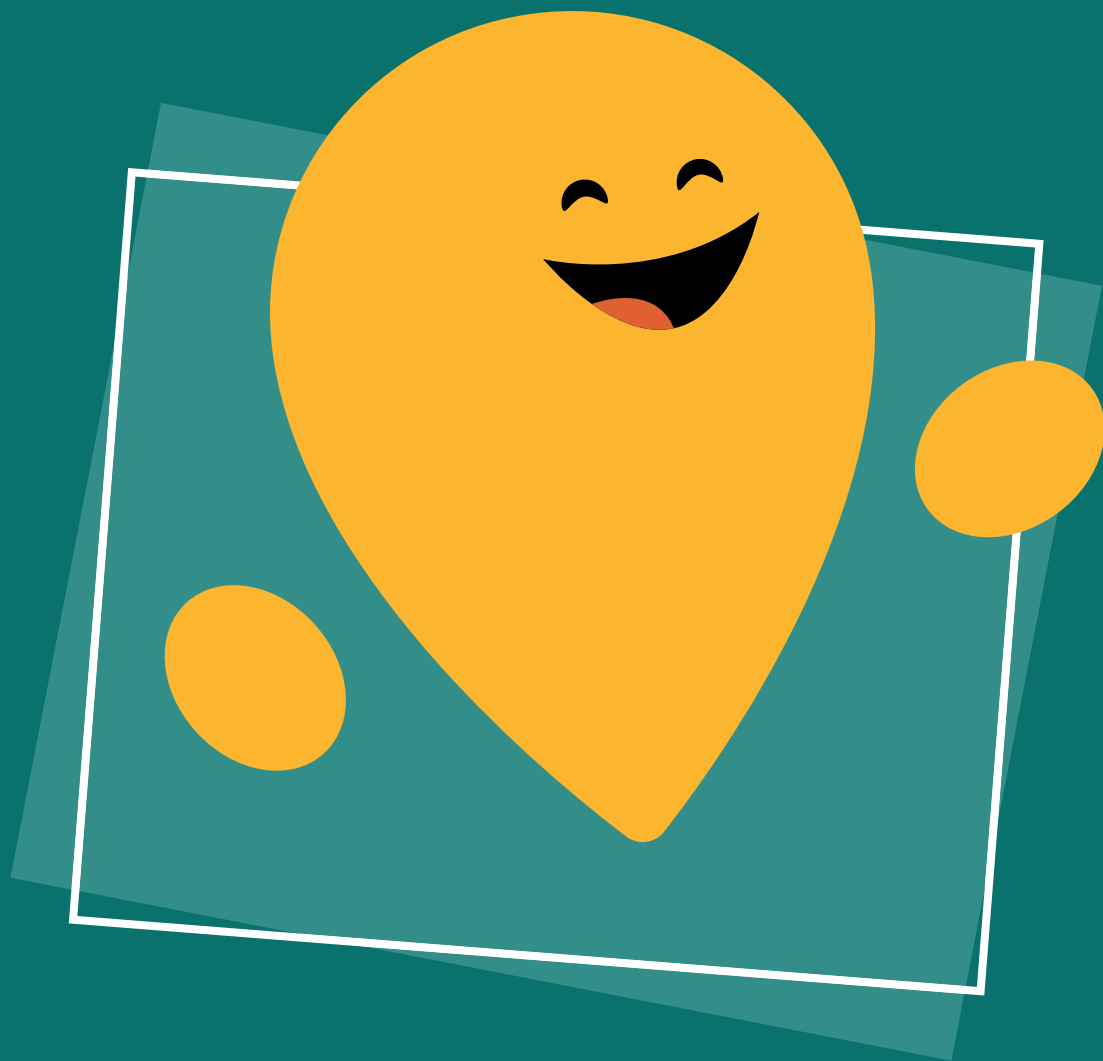
We'll be partnering with Ecologi, an experienced UK-based social enterprise that for the last 4 years has helped fund the planting of over 50 million trees worldwide.

As of January 2024 we've planted over 14,000 trees and aim to continue planting throughout the coming years. This will have not only aided in the creation of new biodiverse regions around the world, but also offsetting some of our carbon footprint.



02. LOOKING TO THE FUTURE

While planting trees is a great first step and one that will have an immediate effect, we need to work harder in order to make a lasting change.



OUR AIMS FOR THE NEXT DECADE

Energy is our biggest battle, with our server systems being core to our operation, using up a significant amount of electricity.

We've been researching alternative providers to our traditional hosting company, and looking at companies who can perhaps meet all of our technological needs that also use 100% renewable energy sources.

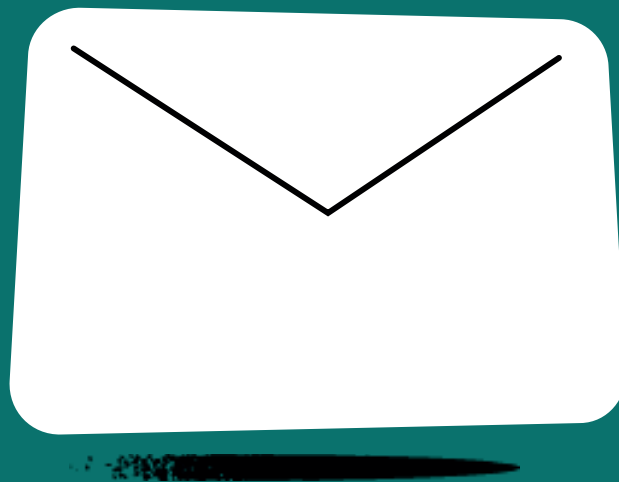
Aside from changing our own internal ways of thinking, we also need to begin to look at changing the attitudes of our users; encouraging them to adopt more environmentally friendly ways of thinking. This can be something as simple as promoting the financial, health and environmental benefits of using public transport instead of their cars.

We've got a long way to go before we're truly making a carbon positive impact on the planet, but these steps should hopefully help towards our long term solution.

WANT TO KNOW MORE?

Get in touch to learn more and discuss
how we might work together to make
things a little greener.

We can't wait to hear from you.



contact@bigteamchallenge.com