

A line drawing of a mobile storage unit. It is a rectangular cabinet on four casters. The unit has a top shelf and two internal shelves, creating three storage compartments. A dashed line indicates the overall height of the unit, which is labeled as 18 1/2 inches.

Model Number	Cabinet Finish	Top Finish	L" x	D" x	H"	List Price
23480/2	Wood	Wood	30	20	34 ¼	4,895
23480/5	Wood	Laminate	30	20	34 ¼	4,650
23481/2	Wood	Wood	30	23 ½	34 ¼	5,145
23481/5	Wood	Laminate	30	23 ½	34 ¼	4,890

- 2 adjustable veneered shelves.
- Captive shelf storage below (1 shelf).
- Fully adjustable shelves in 1" increments.
- 4" diameter, non-marking polyurethane tyred casters.
- Shelf size: 27³/₄" W x 18"/21¹/₂" D.
- Interior Dimensions: 27³/₄" W x 19¹/₄" / 22³/₄" D x 27¹/₂" H.
- Accommodates most document cameras.
- Accommodates all electronic projectors.

Grommet for wire access

open for wire access through back

23486/2	Wood	Wood	30	20	34 ¼	6,135
23486/5	Wood	Laminate	30	20	34 ¼	5,820

23487/2	Wood	Wood	30	20	34 ¼	6,325
23487/5	Wood	Laminate	30	20	34 ¼	6,000

23482/2	Wood	Wood	30	23 ½	34 ¼	6,460
23482/5	Wood	Laminate	30	23 ½	34 ¼	6,125

23484/2	Wood	Wood	30	23 ½	34 ¼	6,660
23484/5	Wood	Laminate	30	23 ½	34 ¼	6,315

- 2 adjustable veneered shelves.
- Captive shelf storage below (1 shelf).
- Fully adjustable shelves in 1" increments.
- 4" diameter, non marking polyurethane tyred casters.
- 2 doors with positive locking touch latches.
- 2^{5/8}" diameter aluminum grommet centered towards back of top.
- Rebrated shelves for wire passage.
- 2" wire access slot at bottom back edge.
- Shelf size: 27^{3/4}" W x 17^{1/20}" D.
- Interior Dimensions: 27^{3/4}" W x 18^{1/4}" / 21^{3/4}" D x 27^{1/2}" H.
- Accommodates most document cameras.
- Accommodates all electronic projectors.

- Single lock on upper left corner of right door, locks both doors.
- Addition of lock requires a pull, see standard pulls in our Credenza price lists.

23488/2	Wood	Wood	30	20	34 ¼	5,855
23488/5	Wood	Laminate	30	20	34 ¼	5,560

23489/2	Wood	Wood	30	20	34 ¼	6,030
23489/5	Wood	Laminate	30	20	34 ¼	5,730

- 3-drawers, bottom of interiors lined with fabric.
- Interior dimensions: 4" H x 16^{5/16}" D x 26^{5/8}" L.
- 4" diameter non-marking polyurethane-tyred casters.
- Positive spring return drawer slides prevent accidental opening during use.
- Anti-tilt mechanism for drawers.
- Does not accommodate all document cameras.

- Single lock, mounted on right side, locks all three drawers.

23483/2	Wood	Wood	30	23 ½	34 ¼	6,150
23483/5	Wood	Laminate	30	23 ½	34 ¼	5,840

23485/2	Wood	Wood	30	23 ½	34 ¼	6,345
23485/5	Wood	Laminate	30	23 ½	34 ¼	6,030



Three Drawers - Model #23483
Positive spring return drawer slides prevent accidental opening during use. Bottom interiors of drawers are fabric-lined.



Open with Shelves - Model #23481
Shelves are fully adjustable in 1" increments. Two adjustable veneered shelves are included.



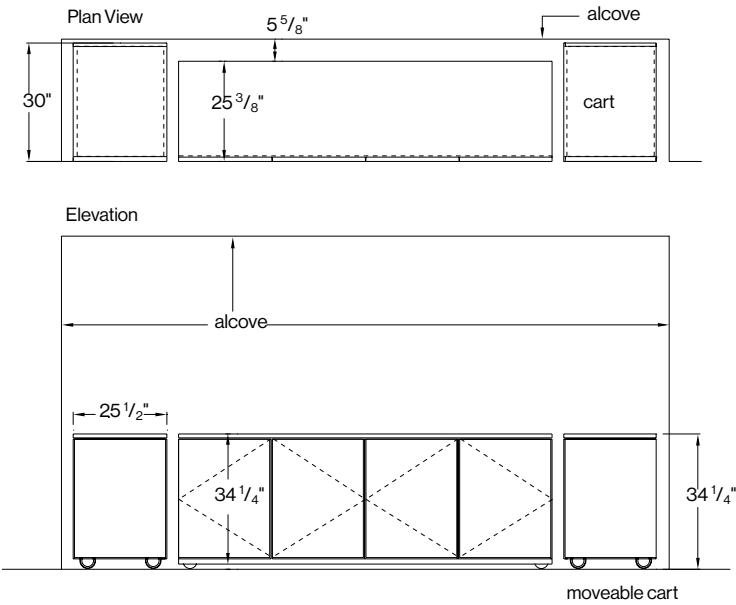
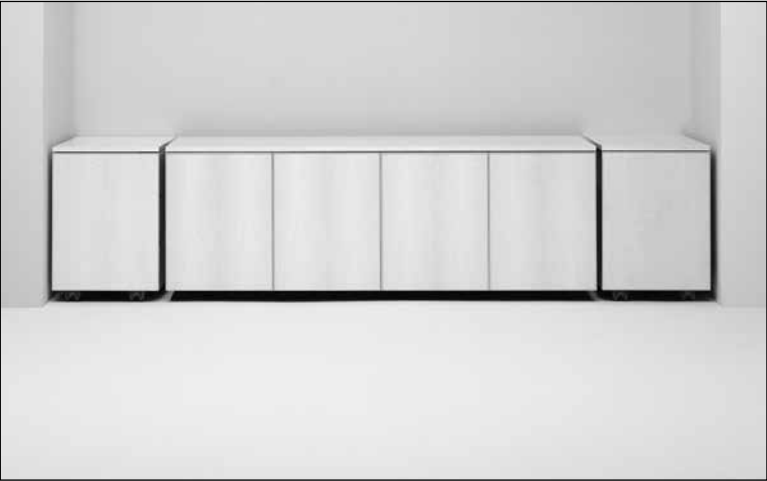
Two Doors with Shelves - Model #23482
Doors have positive locking touch latches. Shelves are fully adjustable in 1" increments. Two adjustable veneered shelves are included.



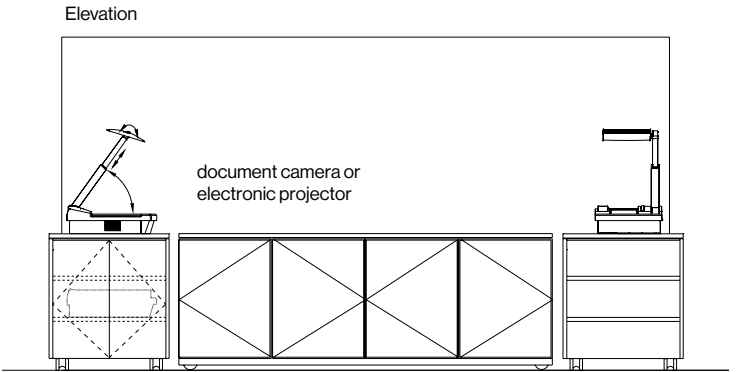
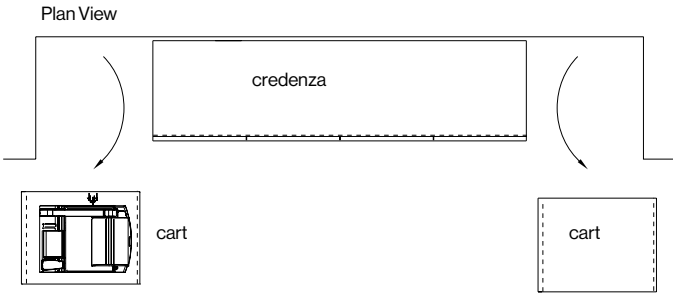
Vox® Carts
Vox Carts offer flexibility and mobility in the boardroom and corporate office environment. Designed to house all multimedia equipment and hospitality services, the Vox Cart accommodates any business event from high-tech presentations to a simple lunch or coffee service.

VOX® CREDENZAS & CARTS IN STORAGE POSITION

CARTS STORED IN A BOARDROOM ALCOVE



CARTS IN USE



Vox Carts are mobile and can be used for hospitality service or housing A/V equipment and can easily be taken to various meeting spaces.