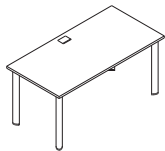


# Vox®

Tel 800 668 9318  
Tel 416 298 5700  
Fax 416 298 9535  
mail@nienkamper.com  
www.nienkamper.com



## MEETING TABLES AND VOX FORUM® INSTALLATION GUIDE

### HARDWARE PARTS LIST

---

**PAN HEAD PHILLIPS SHOULDER BOLT**

$\frac{3}{4}$ " -  $\frac{1}{4}$ " - 20.

Attaches leg mounting plate to table top.

**PAN HEAD PHILLIPS BOLT**

$\frac{3}{4}$ " -  $\frac{1}{4}$ " - 20.

Attaches modesty panel brackets to underside of table top.

**PAN HEAD PHILLIPS BOLT**

$1\frac{1}{2}$ " -  $\frac{1}{4}$ " - 20.

Attaches metal stretcher to underside of table top.

**VOX PLASTIC CLIP**

Used to gang tables and clip them together, designed to be able to quickly disconnect.

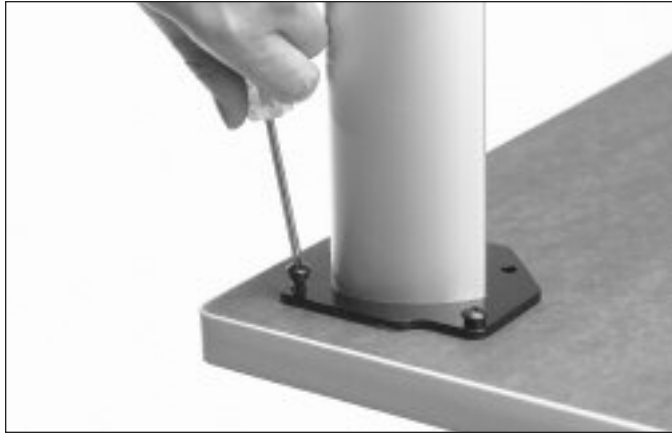
Shipped with all orders.

**VOX GANG CLIP ASSEMBLY**

Used to gang tables together, designed for more permanent installations and wood tops.

Only shipped as required.

## ATTACHING LEGS TO TABLE



1

- Position top with underside facing up.
- Position the legs over pre-installed threaded inserts.
- Install 4 - 1/4" - 20 pan head shoulder bolts in each mounting plate.

## INSTALLING VOX FORUM® (POWER/DATA)

2



- If the table is provided with power/data, unpack the Vox Forum® from its box and retrieve the swivel catches.
- Carefully thread plastic thumbscrews into inserts around the holes in the top.
- Position the Forum in the opening and carefully ease into the hole.
- Rotate the swivel catches and tighten the thumb screw fasteners.

Note: detailed installation instructions are included with all Vox Forums.

## INSTALLING METAL SUPPORT STRETCHER



3

- If your table has been supplied with a metal support stretcher, position it over the threaded locations along the center of the table.
- Fasten the rail with the 1 1/2" x 1/4 x 20 Pan Head Phillips bolts supplied.

## INSTALLING MODESTY PANEL

4



- Position the modesty panel mounting brackets aligning the holes on the bracket over factory installed threaded inserts.
- Install 3/4" x 1/4" - 20 pan head phillips bolt.

## INSTALLING WIRE TROUGH



5

- Once the modesty panel has been attached to the top, center the wire trough between the table legs positioning it into the groove on the brackets.
- Push the trough down into the groove.

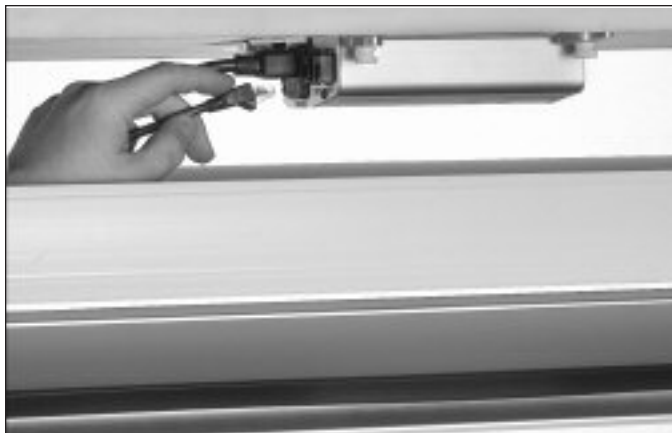
## FIXING THE WIRE TROUGH



6

- Pull up the trough to lock into the groove.

## ASSEMBLED TABLE



7

- Carefully turn the table over.
- Each Vox Forum is shipped with individual cables for each jack.
- Once plugged into the side of the Vox Forum, route cables into the trough.

## INSTALLING CABLING - TROUGH



8

- To access the wire trough, simply pull the top of the modesty panel down.
- To close the modesty panel, rotate back into position and push the top of the panel to snap shut.



9

- The leg has 2 channels for separating and managing cables.
- From the trough, route cables to appropriate leg, inserting power and voice/data into separate sides of the leg.

10



- When the table is not supplied with wire trough and modesty panel, a wire management strip is supplied.
- Simply remove the adhesive backing and press into desired location.
- Position and press cables into place, routing cables into the legs as in #8.

## JOINING TABLES WITH PLASTIC CLIPS

## JOINING TABLES WITH METAL BRACKETS



11

12



- Multiple tables are provided with plastic joining clips.
- Place clip so that the notch in clip aligns with shoulder of screw attached to the leg.
- Pull clip so that it engages and snaps on to shoulder bolt.
- Clip has 2 position locking if a tighter joint is required.

- For tables with self edge wood tops or where more permanent joining of tables is required.
- Insert threaded knobs into table with metal gang clip.
- Position tables together, swivel catch into position and tighten clip.