

Nomad™

Tel 800 668 9318
Tel 416 298 5700
Fax 416 298 9535
mail@nienkamper.com
www.nienkamper.com

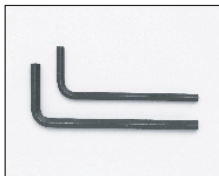


Nomad Base

CONFERENCE TABLE & POWER UNIT INSTALLATION GUIDE

THIS IS A GENERAL ASSEMBLY GUIDE, NOT ALL CONDITION MAY APPLY TO YOUR PARTICULAR INSTALLATION

HARDWARE PARTS LIST



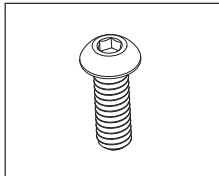
ALLAN KEYS

Small 4 mm
For hex socket assembly, to join rails together.
For installing bases to rails.
For installing mounting plate to top.
Large 5 mm
For hex socket assembly, to join rail together.



FLAT HEAD HEX SOCKET ASSEMBLY

4 mm and 5 mm - 2" x 1/4" - 20 and threaded collar.
Joins rails together.



BUTTON HEAD CAP SCREW

4mm - 3/8"-16 x 1".
Joins leg to rail.



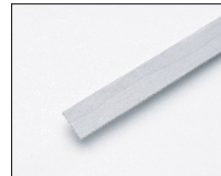
FLAT HEAD HEX SOCKET BOLT

4 mm - 1" x 1/4" - 20.
Joins mounting plate to top.
Joins bases to top for tables up to 108".



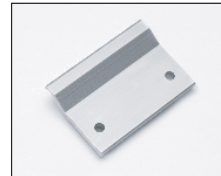
TIGHT JOINT FASTENERS

3 piece assembly
plus 1 tightening rod.



WOODEN SPLINE

1/8" x 7/8" x (24" - varies).
Inserts into the edge of
multiple segment tops.



MOUNTING PLATE

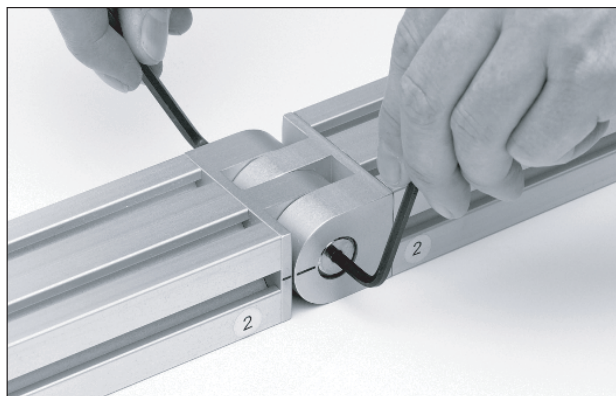
1/4" x 3" x 4".
Fixes rail to top.



WIRE MANAGEMENT "U" CLIPS

Grey ABS plastic.
Used to secure wires to
support rail.

ASSEMBLING SUPPORT RAILS

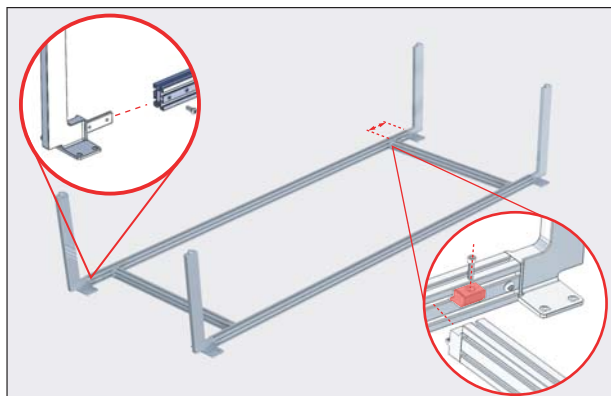


1

- Large conference tables incorporate support rails in multiple segments.
- Position and assemble connecting joints as shown.
- Matching joints are number coded (circular labels).
- Required hardware: 2" x 1/4" - 20 flat head hex socket assembly.
- Tighten joint, aligning marks as shown.
- Certain table shapes require rails to be assembled at different angles (as marked).

ATTACHING BASE TO RAILS

2



- With leg upside down and rail positioned so 3/8" dia. holes face inward, slide leg tab into end of rail and secure with 3/8"-16 x 1" button head screw.
- Measure and mark center distance to position cross rail according to your specific order.
- Loosen Gripper fitting socket head cap screw and push fitting and cross rail into marked position, tighten to secure.

FINISHED BASE ASSEMBLY

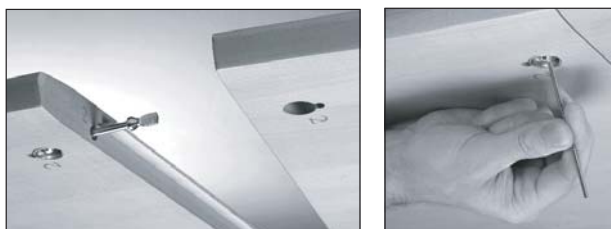


3

- Flip assembly over to apply top.

JOINING MULTIPLE PIECE TOPS

4



- Position multiple section tops with matching identification numbers onto rails.
- Insert wooden spline into the groove at the seam.
- Insert ball fitting, align with tight joint bolt.
- Start the thread.
- Slide tops together, align the top.
- Insert tight joint collar.
- Tighten ball fitting, hand tight.

ATTACHING RAIL TO TOP

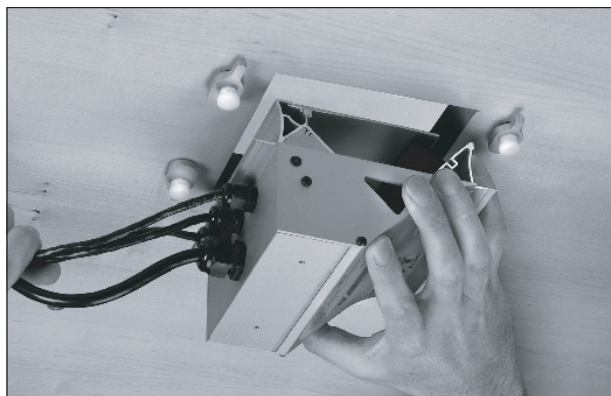


5

- Insert the mounting plate into the top groove of the rail.
- Slide the plate to align threaded inserts of top with holes in mounting plate.
- Required hardware: 1" x 1/4" - 20 flat head hex bolt.

INSTALLING VOX FORUMS™

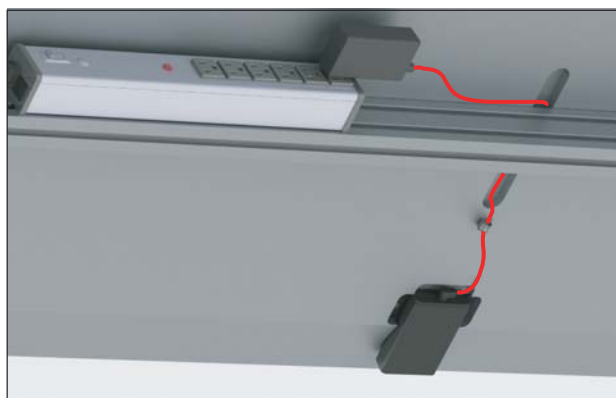
6



- Unpack the Forum box and retrieve the swivel latches.
- Carefully thread plastic thumbscrews into inserts around the square hole in the top.
- Position Forum in opening and carefully ease up into the square hole.
- Rotate the swivel catches and tighten the thumb screw fasteners.

Note: detailed installation instructions are included with all Vox Forums.

INSTALLING EDGE POWER UNIT



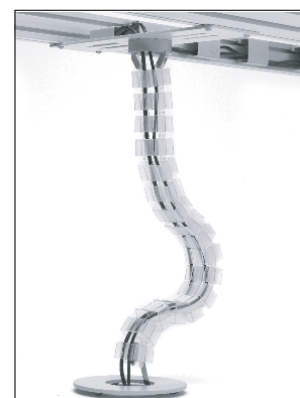
- Unpack power unit and install in rebates machined under top using wood screws provided with unit.
- Feed power cable under rail via wire rebate and plug into surge protector or route to building power according to your specific table.
- Screw "d" ring cable manager into place in front of cable rebate.

"U" CLIPS



- Using wire management "U" clips, along the rail, store and route cables to cable manager.

WIRE MANAGEMENT



- To bring cabling from the under side of the top to the floor, wire management accessories can be used.
- A variety of models are available.
- Instructions for installing wire management accessories are packaged with each accessory.