

GATEWAY™ ALL IN ONE DESK

INSTALLATION GUIDE

SUGGESTED MINIMUM CREW: 2
APPROXIMATE INSTALL TIME: 30 min

TOOLS REQUIRED:

4mm Hex Key
Phillips Screwdriver / bit
Drill

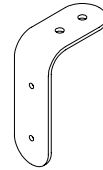
HARDWARE:



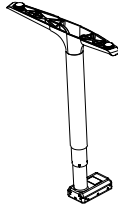
1/4\"-20 x 7/8\"
Joiner Bolt



#8 x 5/8\"
Pan Head
Wood Screw



Modesty
Bracket



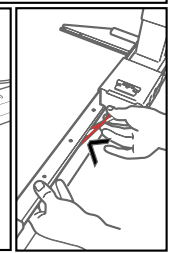
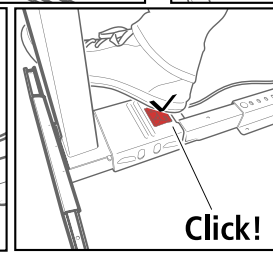
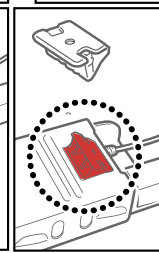
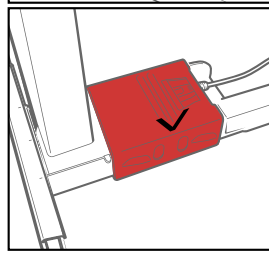
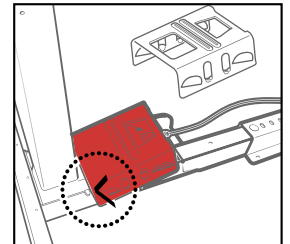
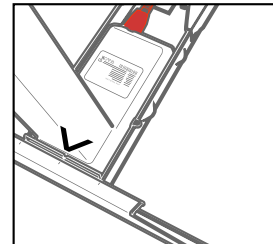
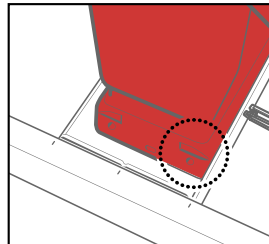
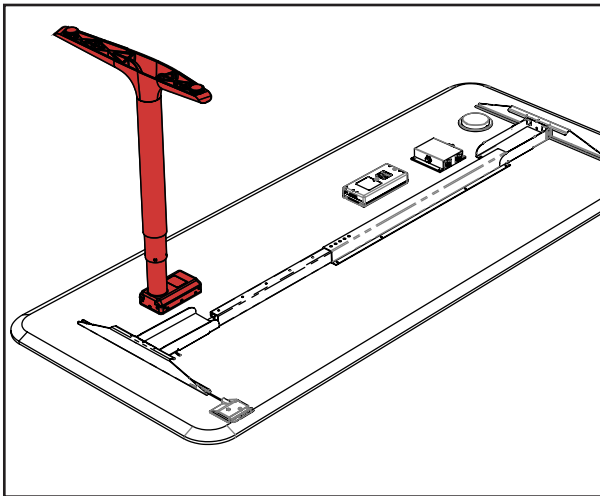
Height
Adjustable
Column



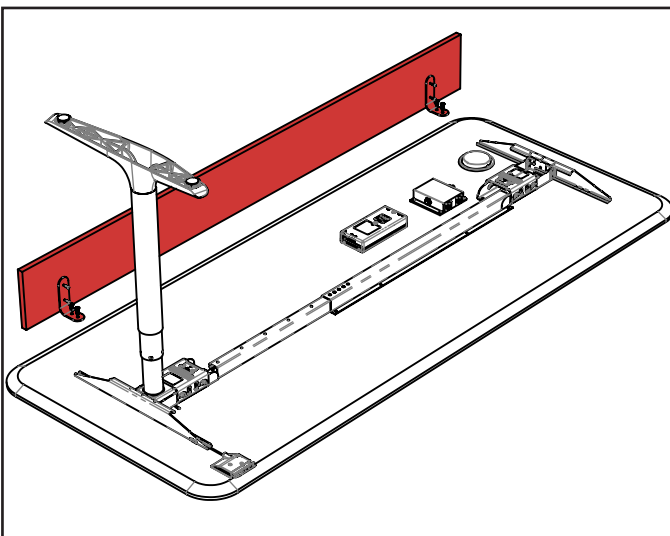
Leg Lock



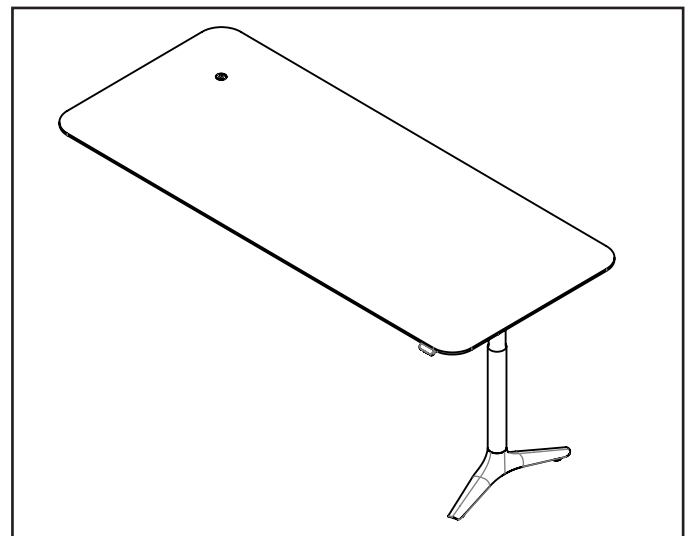
Leg Clamp



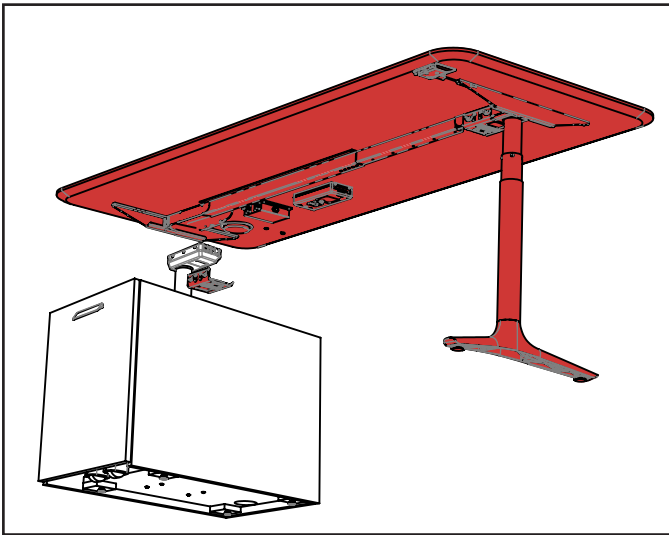
With table top upside down on a protective surface, align height adjustable column with leg cradle in pre-installed frame. Be sure to install leg on proper end according to your installation. Plug leg cable into column. Slide column to end of cradle, and hold in place with leg clamp. To lock into position, tilt leg lock and apply pivoting force until plastic component clicks into place. Note this is easiest to do by carefully stepping on with your foot. When locking the pedestal column in future step, apply this same pivoting force with your hand.



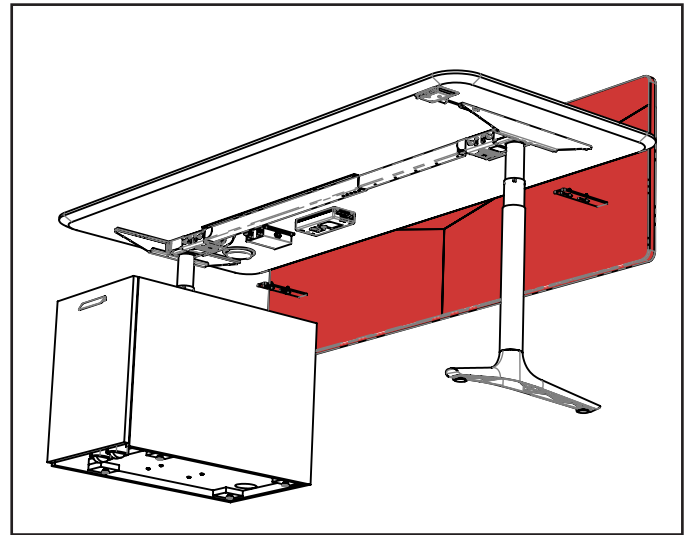
If your desk includes a partial modesty panel, attached modesty brackets to panel with #8 x 5/8\" pan head wood screws. Attach assembly to top with 1/4\"-20 x 7/8\" joiner bolts.



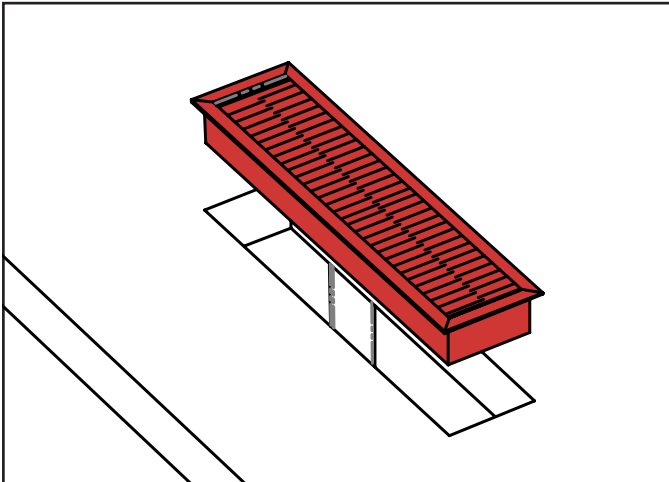
With the help of another person, rotate the assembled table into the working position.



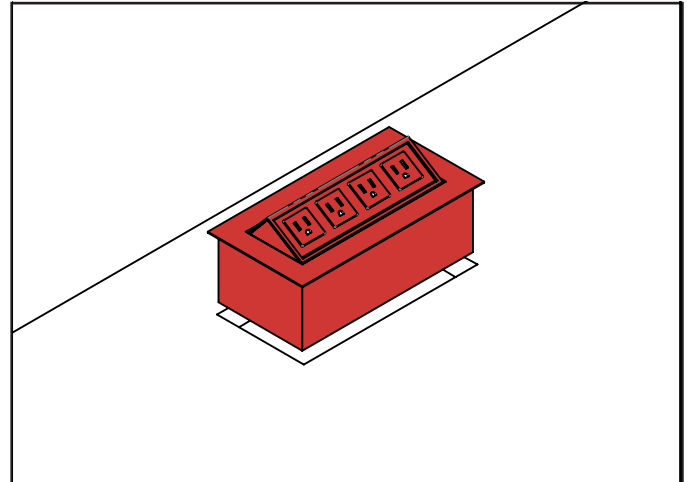
Carefully align pedestal mounted column with leg cradle in frame. Lower in place and fix with leg clamp and lock described previously.



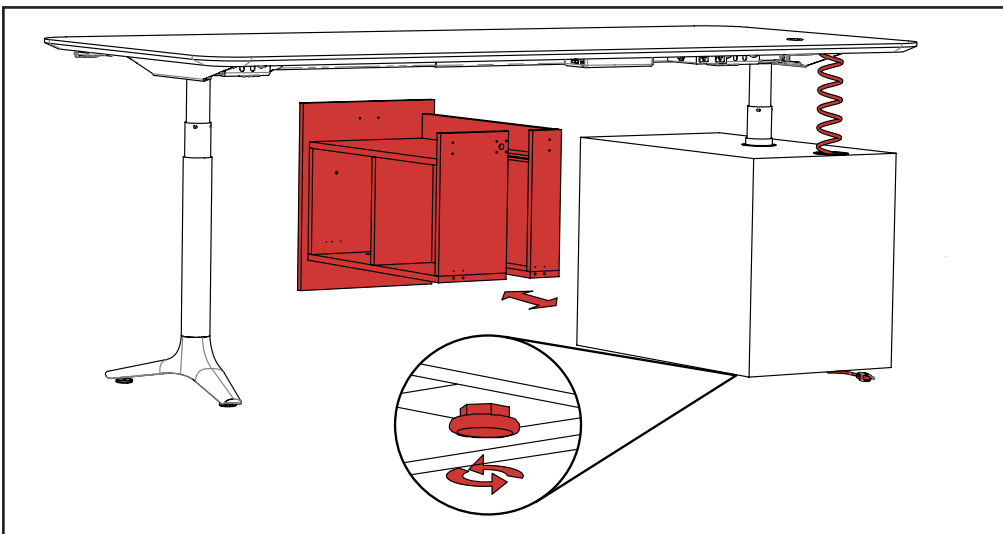
If your desk includes a divider, align brackets pre-installed in divider with inserts in underside of top. Fix with 1/4" - 20 x 7/8" joiner bolts. Dividers can be positioned tight to desk or with cable gap.



If your desk includes a rectangular grommet, insert unit into hole in top and secure with screw included with grommet packaging.



If your table includes a power / connectivity device, follow installation documentation included with specific device.



Cables route from desk top through case by feeding curly cord through pedestal and out the pedestal bottom. To do this remove drawer by squeezing lock triggers under front lip of drawer. This disengages slide locks. Case and legs can be leveled by turning installed glides to desired height.



For complete details on desk operation, consult Height Adjustable Control Operation & Setup Guide.