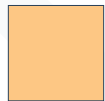
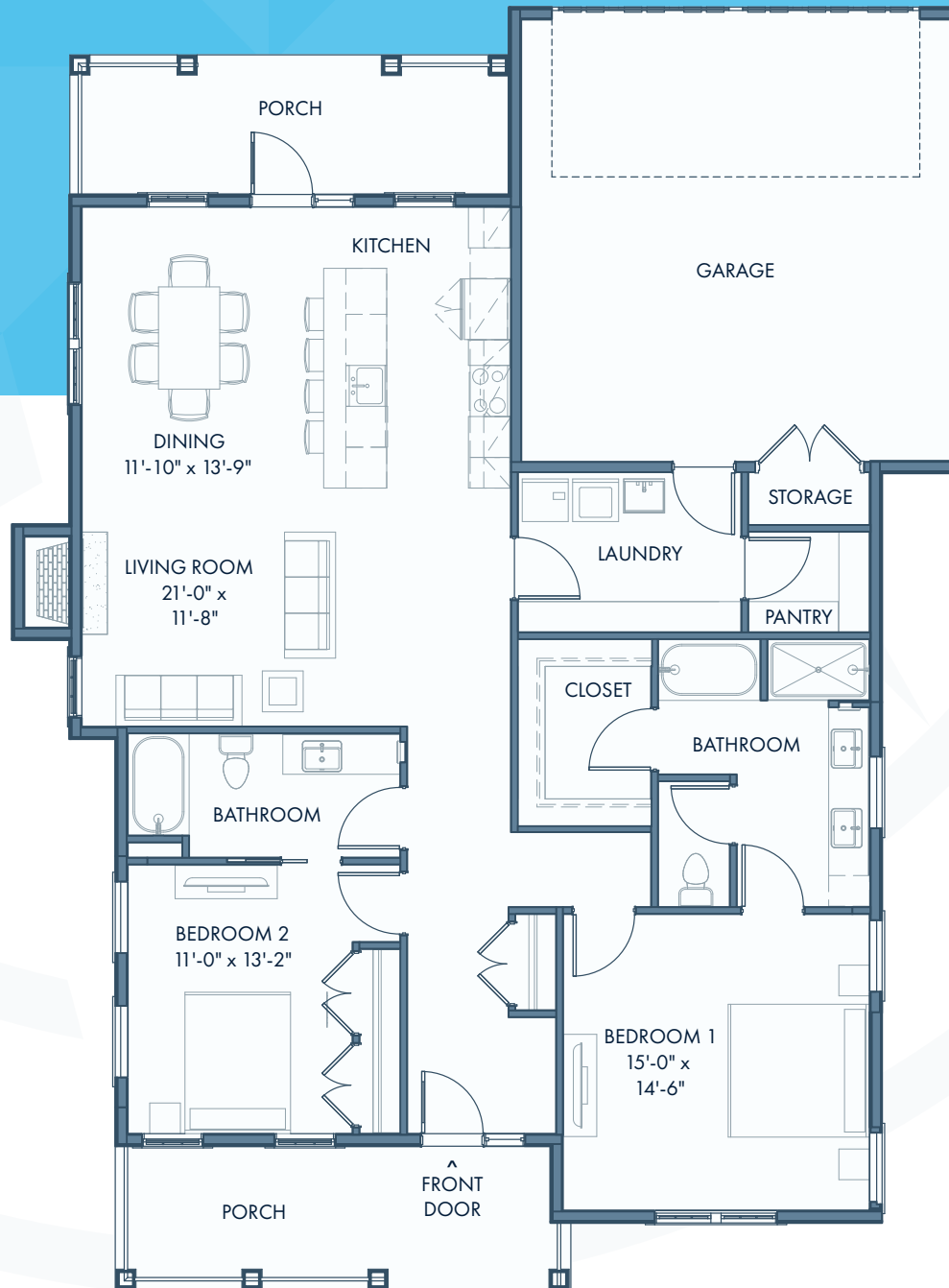




The Village at
**PROVIDENCE
POINT**
A National Lutheran Community



THE EASTON

2 BEDROOM COTTAGE
REAR ENTRY GARAGE

1,600 SQ. FT.



The Village at Providence Point is sponsored by National Lutheran Communities & Services, a faith-based, not-for-profit ministry of the Evangelical Lutheran Church in America, serving people of all beliefs. The Village at Providence Point is subject to the final approval of the Maryland Department of Aging. Floor plans subject to change, pending final design and engineering.