


KEARNS FAMILY FOUNDATION FUND
COMMUNITY FOUNDATION of BROWARD


LAWRENCE A. SANDERS FUND TO PROMOTE LITERACY
COMMUNITY FOUNDATION of BROWARD


CATHY AND JAMES DONNELLY FAMILY FUND
COMMUNITY FOUNDATION of BROWARD


NANCY LYNN BROWN SCHOLARSHIP FUND
COMMUNITY FOUNDATION of BROWARD


JIM AND JAN MORAN FUNDS
COMMUNITY FOUNDATION of BROWARD


SCOTT FAMILY FUND
COMMUNITY FOUNDATION of BROWARD


BBX CAPITAL FUND FOR THE ARTS
COMMUNITY FOUNDATION of BROWARD


LEONARD AND ANTJE FARBER ENDOWMENT FUND
COMMUNITY FOUNDATION of BROWARD


JOHN H. RAU SPACE EDUCATION FUND
COMMUNITY FOUNDATION of BROWARD


THY AND HAROLD D. RANKS
COMMUNITY FOUNDATION of BROWARD


DON AND JUDY THIEL FUND
COMMUNITY FOUNDATION of BROWARD


HELEN AND FRANK STOYKOV CHARITABLE ENDOWMENT FUND
COMMUNITY FOUNDATION of BROWARD


JACK AND MARIE KAYE FUND
COMMUNITY FOUNDATION of BROWARD


LIU AND MAY JEAN WOLF FAMILY FOUNDATION FUND
COMMUNITY FOUNDATION of BROWARD


JAMES I. CODDINGTON, JR. CHARITABLE FUND
COMMUNITY FOUNDATION of BROWARD


MARY ANN ALLEN MCKENNA COMMUNITY IMPACT FUND
COMMUNITY FOUNDATION of BROWARD


HUDSON FAMILY FUND
COMMUNITY FOUNDATION of BROWARD


RICHARD FRISBY AND EDWARD BURKHART FUND
COMMUNITY FOUNDATION of BROWARD


LIBBY AND JACK DEINHARDT FUND
COMMUNITY FOUNDATION of BROWARD


THE ELIZABETH COTTER CHARITABLE FUND
COMMUNITY FOUNDATION of BROWARD


STEPHEN AND ETHEL KELLER CHARITABLE FUND
COMMUNITY FOUNDATION of BROWARD


AND MARION T. ARCHIBALD
COMMUNITY FOUNDATION of BROWARD


KIWANIS CLUB OF FORT LAUDERDALE CHARITABLE FUND
COMMUNITY FOUNDATION of BROWARD


EVERETT H. METCALF, JR. UNRESTRICTED FUND
COMMUNITY FOUNDATION of BROWARD

YOUR CHARITABLE FUND MADE EASY

GIVE • GROW • GRANT



**COMMUNITY
FOUNDATION
OF BROWARD**

CHARITABLE FUND CASE STUDY



MARY AND ALEX MACKENZIE COMMUNITY IMPACT FUND

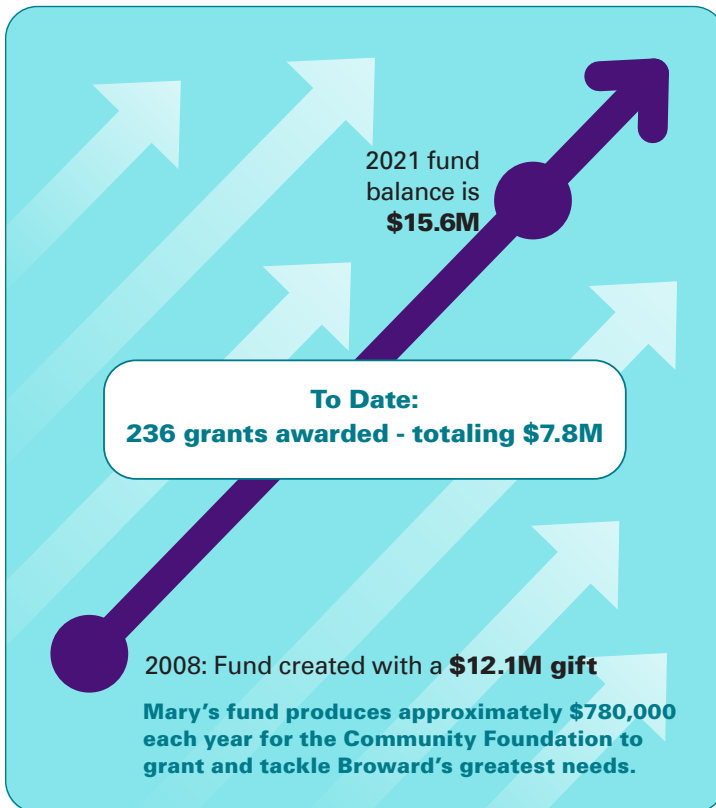
COMMUNITY FOUNDATION of BROWARD

More than a decade ago, Mary Mackenzie created her endowed **Mary and Alex Mackenzie Community Impact Fund**. Mary's fund has no restrictions and evolves with the community. She didn't want

it to be narrowly focused on a specific issue because she knew that community needs change over time. And because it's endowed, Mary's bold impact will grow over time and last forever.

The **Mary and Alex Mackenzie Community Impact Fund** has already:

- Helped boost Broward's **high school graduation** rate.
- Moved hundreds of **struggling families** to financial stability.
- Furthered acceptance and inclusion of **Broward's LGBTQ+ residents**.
- Enabled **children aging out of foster care** to transition to independence.
- Improved the quality of life and reduced isolation for **Broward seniors**.
- Invested in efforts to tackle **climate change, sea-level rise and beach erosion**.
- Found forever **homes for thousands of Broward shelter animals**.



Whether you're 28 or 82, you may have questions about how to give back to your community.

No matter what you want to achieve with your giving, the Community Foundation of Broward has a charitable fund that's right for you.

We help you **give, grow** and **grant** to create **BOLD** community impact.

Giving is always easy with the Community Foundation of Broward

1



DECIDE,

with guidance from us and your advisors, which type of charitable fund makes the most sense for you.

2



DEFINE

the kind of impact you would like to create with your fund.

3



GIVE

Establish your fund with:

- Cash
- Stock
- IRA Distribution
- Real Estate
- Life Insurance
- Gift From a Private Foundation
- Grant From an Outside Donor-Advised Fund

4



RELAX

because your charitable fund is now in place and creating the impact you want in the community you love.

Your Charitable Fund = **BOLD** Impact

- Do you want to have a broad impact on the community you love?
- Is there a particular issue that you are passionate about?
- Do you want the flexibility of giving to any charitable organization anywhere, any time?
- Is there a specific charity you wish to support?
- Would you like to leave a legacy that enables the Foundation to tackle a variety of community issues that may arise 10, 50, 100 years from now?

YOUR CHARITABLE FUND:

- Supports philanthropy that reflects your values, passions and goals.
- A powerful alternative to a family foundation – without the additional administrative responsibilities.
- Amplifies the impact of every dollar you give by drawing on our philanthropic expertise and community knowledge.
- Carries on your legacy of community impact for generations to come.

NAMING YOUR FUND:

It can bear your name, your family's name or you can choose a name that is meaningful to you. One hundred years from now, your fund will still be making gifts in whatever name you choose. You can also set up an anonymous fund if you prefer.

**See Which Type
of Charitable
Fund Fits You
Best**



Know Your Impact

No matter which type of fund fits you best, we will keep you informed and connected so you always know the bold impact your charitable giving is having on the community you call home.

UNRESTRICTED FUND

I want to support...

The issues of the greatest concern to the community at any particular point in time – whether today or 100 years from now.

YOUR UNRESTRICTED FUND responds to the most pressing needs of the community, including future needs that often cannot be anticipated at the time it is established.

Because you set no limitations on which issues your fund will tackle, you enable our expert team and Board of Directors to do what we do best – assess community needs and respond by awarding grants to the nonprofit organizations

undertaking our community's most critical work forever.

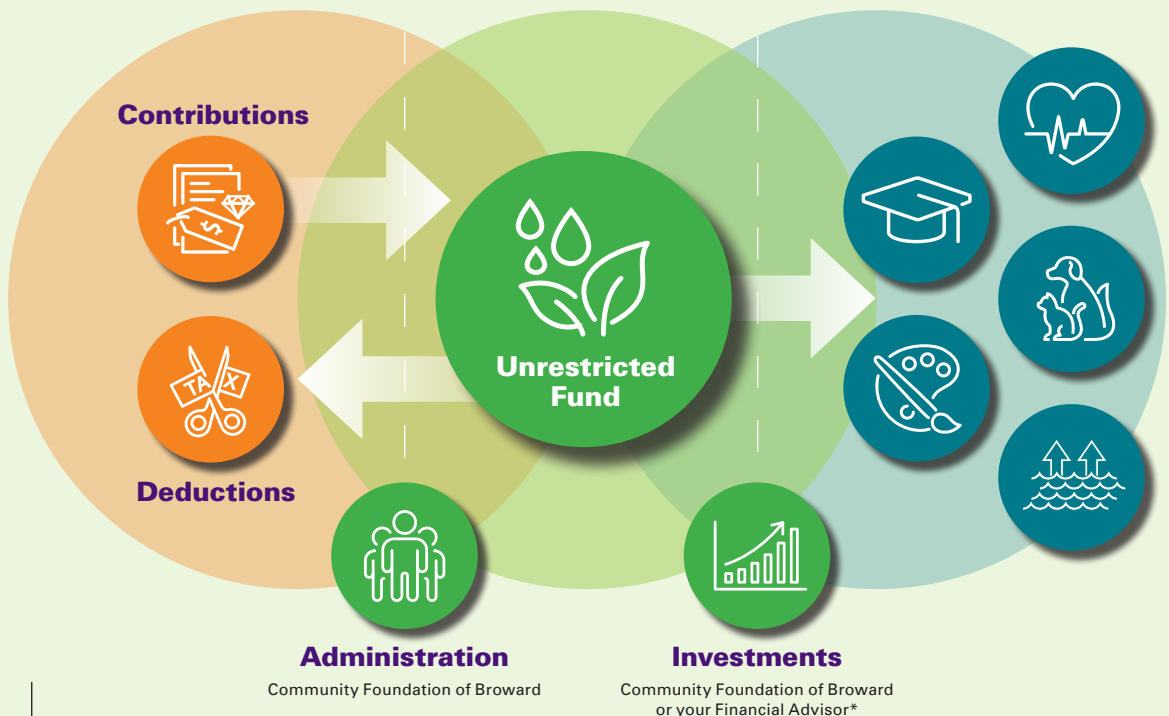
Your unrestricted fund becomes a permanent source of support for the community, like an insurance policy for the place you call home.

GIVE • GROW • GRANT

Give to your fund and receive a tax deduction

Grow your charitable assets

The Community Foundation's expert team determines the causes and organizations to support, on your behalf



FIELD OF INTEREST FUND

I want to support...

A particular cause that I care about.

YOUR FIELD OF INTEREST FUND supports the specific issues that are important to you. For example, you may want to support the arts, the environment, education, or

health. You determine the issue(s) or area(s) your fund will benefit, the grantmaking is handled by our expert team and Board of Directors on your behalf. If you hold a particular issue close to your

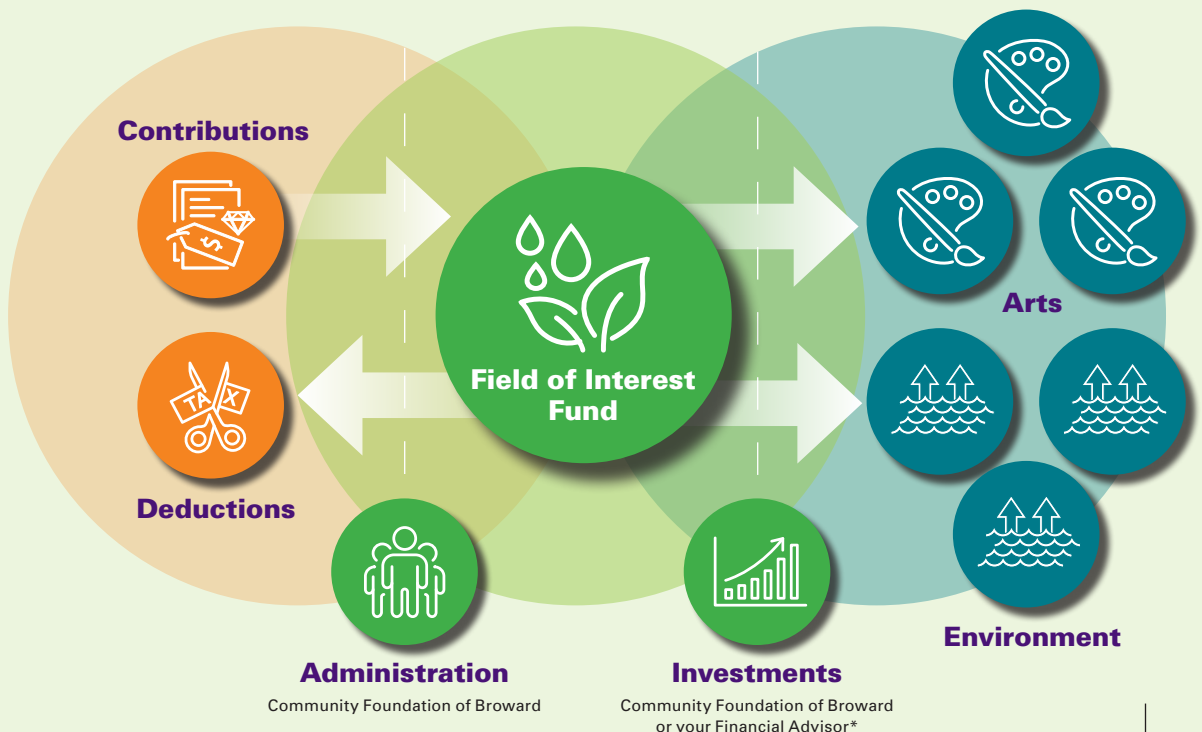
heart, a Field of Interest Fund assures that your fund will always be used to support that issue in ways that reflect your values, passions and goals.

GIVE • GROW • GRANT

Give to your fund and receive a tax deduction

Grow your charitable assets

The Community Foundation's expert team identifies organizations to support in your chosen issue area(s)



*Fundholders with fund balances of \$1M or more may select their own investment advisor in accordance with Community Foundation of Broward guidelines.

DONOR-ADVISED FUND

I want to support...

A variety of causes and charitable organizations that are meaningful to me.

YOUR DONOR-ADVISED FUND (DAF) enables you to recommend the charitable organizations to receive grants, and we do the due diligence and paperwork. You can use your DAF to support your favorite charities

as needs and opportunities arise. You have the flexibility to recommend the specific organizations you'd like to benefit from grants awarded through your fund.

Our philanthropy experts can

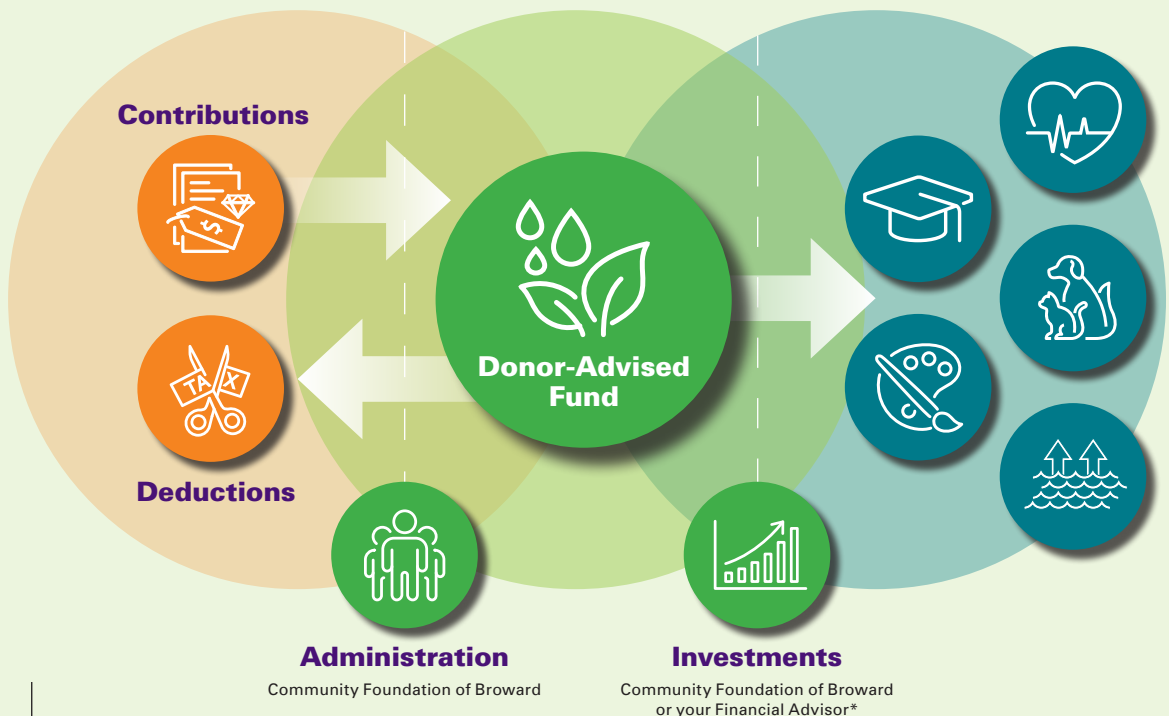
also share new opportunities you may not be aware of. You receive a tax deduction when you establish or add to your fund, and then you can take your time deciding which causes to support.

GIVE • GROW • GRANT

Give to your fund and receive a tax deduction

Grow your charitable assets

Grants to the causes you care about



DESIGNATED FUND

I want to support...

A specific charity forever, one that has touched my life and my heart.

YOUR DESIGNATED FUND

enables you to specify a particular organization(s) to support for generations to come.

Your gift is invested in the CFB endowment and grows over time. Earnings from

your fund are used to make annual grant distributions to the organization(s) you choose. As the principal and future earnings of your fund grow. The grants will grow as well. It's a permanent source of capital for your favorite nonprofit – that lasts forever.

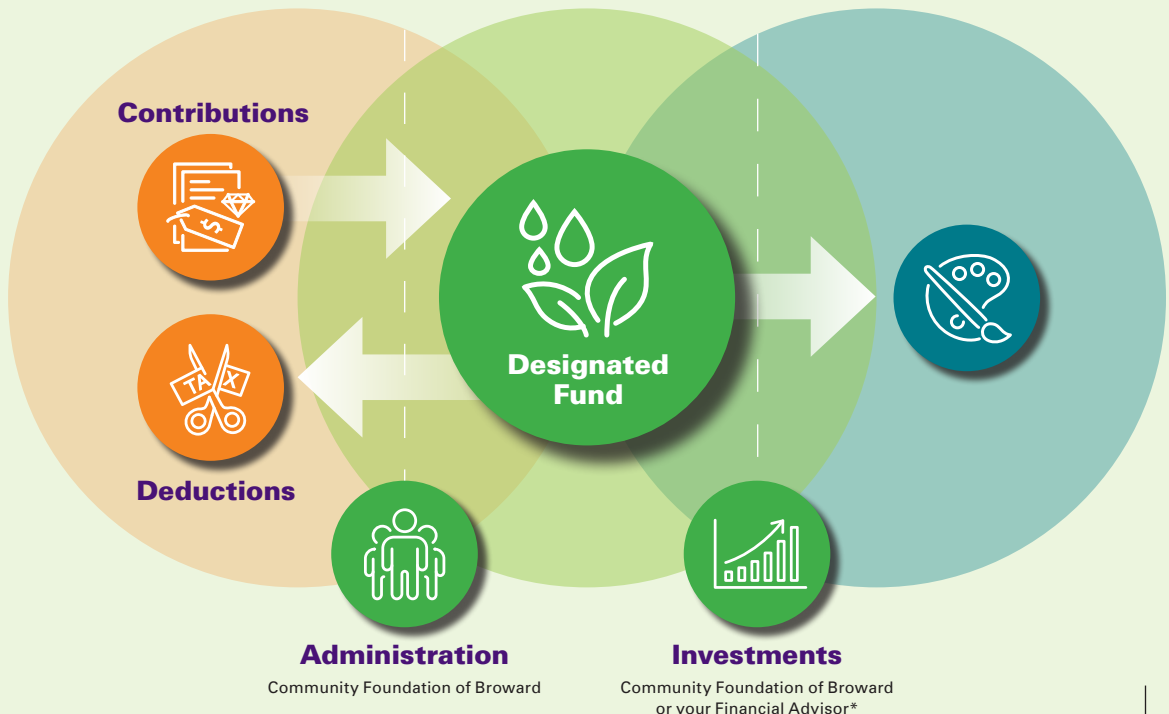
Also, if an organization ceases to exist or changes in mission, the Foundation can redirect your fund so that it continues to address your charitable intent. We mind the store on your behalf, when you're no longer here to do it.

GIVE • GROW • GRANT

Give to your fund and receive a tax deduction

Grow your charitable assets

Grants to the charitable organization(s) you designated when you created your fund



*Fundholders with fund balances of \$1M or more may select their own investment advisor in accordance with Community Foundation of Broward guidelines.

SCHOLARSHIP FUND

I want to support...

Educational or vocational opportunities for students from all walks of life seeking to achieve their full potential.

YOUR SCHOLARSHIP

FUND allows you to make a direct impact on someone's ability to pursue education or acquire specific job skills. In doing so, you make a direct impact on someone's future.

You may also recommend an academic focus or vocation for your Scholarship Fund (such as nursing, the arts or engineering) and eligibility criteria (including financial need, academic merit,

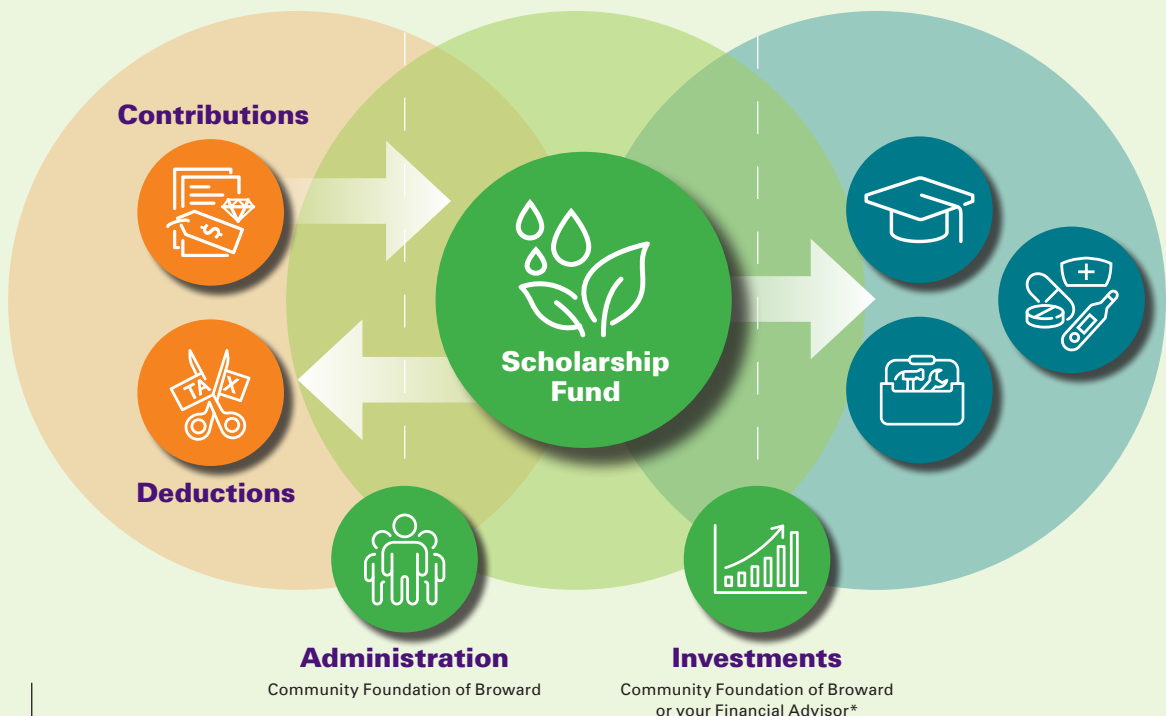
geographic residence and/or community service).

GIVE • GROW • GRANT

Give to your fund and receive a tax deduction

Grow your charitable assets

Award scholarships according to the criteria set when you created your fund






GIVE • GROW • GRANT

LET'S GET STARTED

We look forward to being your philanthropy partner.

Let us help you maximize the impact of your charitable dollars and establish a legacy of **BOLD** impact that will last forever.

To learn more about establishing your own charitable fund at the Community Foundation, contact our **Vice President of Philanthropic Services, Kelly Marmol**, at kmarmol@cfbroward.org or 954-761-9503





HUDSON FAMILY FUND
COMMUNITY FOUNDATION of BROWARD



**JUDITH ANN LINNELL
FOUNDATION FUND**
COMMUNITY FOUNDATION of BROWARD



**LOUISE WEMYSS FUND
FOR ANIMAL WELFARE**
COMMUNITY FOUNDATION of BROWARD



**ALVIN AND GLORIA ROSS
COMMUNITY CARE FUND**
COMMUNITY FOUNDATION of BROWARD



**ANDREW L. WURTELE
FAMILY FUND**
COMMUNITY FOUNDATION of BROWARD



MARY N. PORTER LEGACY FUND
COMMUNITY FOUNDATION of BROWARD

**MARY AND ALEX MACKENZIE
COMMUNITY IMPACT FUND**
COMMUNITY FOUNDATION of BROWARD



**MARLENE HOLDER
FUND FOR BROWARD**
COMMUNITY FOUNDATION of BROWARD



**MILDRED TALKWICZ
CHARITABLE FUND**
COMMUNITY FOUNDATION of BROWARD



JAMES C. ACHESON FUND
COMMUNITY FOUNDATION of BROWARD



**ERWIN M. VASQUEZ, M.D. AND ELAINE VASQUEZ
FAMILY FOUNDATION FUND**
COMMUNITY FOUNDATION of BROWARD



**DOROTHY
FUND**
COMMUNITY FOUNDATION of BROWARD

JOHN J. DONNELLY
COMMUNITY FOUNDATION of BROWARD



ROSE MINIACI FAMILY FUND
COMMUNITY FOUNDATION of BROWARD



**JOSEPH S. AND LOUISE B. RUMBAUGH
FUND**
COMMUNITY FOUNDATION of BROWARD



**VERETT H. METCALF, JR.
UNRESTRICTED FUND**
COMMUNITY FOUNDATION of BROWARD



**FRANCIS A. AND ADELINE M. SINES
MEMORIAL FUND**
COMMUNITY FOUNDATION of BROWARD



FREDERICK W. JAQUA FUND
COMMUNITY FOUNDATION of BROWARD

**LIBBY AND JACK DEINHARDT
FUNDS**
COMMUNITY FOUNDATION of BROWARD



**SALLY AND FRANK ATLAS
CHARITABLE FUND**
COMMUNITY FOUNDATION of BROWARD



**GERTRUDE GRAY MEMORIAL
SCHOLARSHIP FUND**
COMMUNITY FOUNDATION of BROWARD



KRUPNICK FAMILY FUND
COMMUNITY FOUNDATION of BROWARD



**FRANCIE BISHOP GOOD AND
DAVID HORVITZ FUND FOR THE ARTS**
COMMUNITY FOUNDATION of BROWARD



**PERCY P.
FUND**
COMMUNITY FOUNDATION of BROWARD

GIVE • GROW • GRANT



**COMMUNITY
FOUNDATION
OF BROWARD**

910 East Las Olas Boulevard | Suite 200 | Fort Lauderdale, Florida 33301

info@cfbroward.org

cfbroward.org | 954.761.9503