

The Joel Goldsmith
Bookstore and Reading Room
CHAPTER OF THE MONTH

User Guide
for
DESKTOP / LAPTOP

The Reading Room is your destination for reading Joel Goldsmith's books online.

STUDY SERIES

Includes:

- Chapter of the Month
- Supplemental Reading Guide
- Selected Study Guide

VIRTUAL LIBRARY

Includes:

- 75 Published Goldsmith titles
- Chapter of the Month
- Reading and Study Guides

Whichever membership you choose, your access begins in **The Reading Room** found at <https://www.joelgoldsmithbooks.com/reading-room>.

JUMP TO:

HOW DO I LOG IN?

WHERE IS THE CHAPTER OF THE MONTH?

HOW DO I READ THE CHAPTER?

I AM HAVING TROUBLE!

Still need help? Write us at support@joelgoldsmithbooks.com

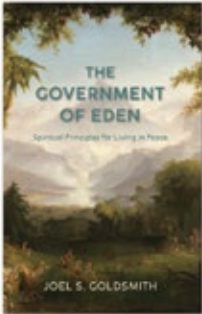
Whether you are accessing free content or paid content, you must log in first. You can login from anywhere on the website by clicking LOGIN in the menu bar. You will need the email address and password you chose when you subscribed.



HOME SHOP THE READING ROOM ABOUT CONTACT LOGIN SUBSCRIBE

If you are not logged in, or are not yet a member, you will see a message asking you to either login or subscribe to access any members-only content. Once you are logged in, you will see a yellow button inviting you to enter that part of the website.

NOT LOGGED IN:



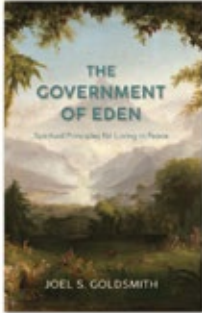
Chapter of the Month

Our monthly chapter study series is an ambitious and important twelve-month study of *The Government of Eden*, a most timely book focusing on spiritual government and how to live "in the world but not of it." Each month we will post one chapter to read on this website.

Accompanying each chapter is a Supplemental Reading guide with suggestions for related writing and audio selections. Membership for the Chapter of the Month is always free! Chapters are accessible online and an internet connection is required. Of course, you are also invited to work with your own printed copy of the book.

[LOGIN OR SUBSCRIBE FOR FREE TO ACCESS](#)

LOGGED IN:



Chapter of the Month

Our monthly chapter study series is an ambitious and important twelve-month study of *The Government of Eden*, a most timely book focusing on spiritual government and how to live "in the world but not of it." Each month we will post one chapter to read on this website.

Accompanying each chapter is a Supplemental Reading guide with suggestions for related writing and audio selections. Membership for the Chapter of the Month is always free! Chapters are accessible online and an internet connection is required. Of course, you are also invited to work with your own printed copy of the book.

ENTER

When you enter the Chapter of the Month area, you will see four tabs.

Chapter of the Month: Only one chapter is available each month. In this tab you will find information about the current chapter. Clicking on the cover image or the yellow button will open the chapter in a new browser window.

Supplemental Reading: In this tab you will find the Supplemental Reading Guide for the current chapter. These guides are prepared using our Electronic Search Tool, which enables specific searches on everything Joel wrote, and everything he discussed in classes. These guides are offered as suggested reading to expand your study of topics in the current chapter.

Archives: This tab contains the Supplemental Reading archives, not chapter archives. The guides are archived so that you may use them at any time with your own printed copy of the current book being studied, or use in conjunction with a subscription to the Virtual Library, where all books can be accessed at any time.

User Guide: If you get stuck, you can find the user guide in this tab!

Chapter of the Month

Supplemental Reading

Archives

User Guide

FEBRUARY, 2021 – PART ONE

Chapter of the Month

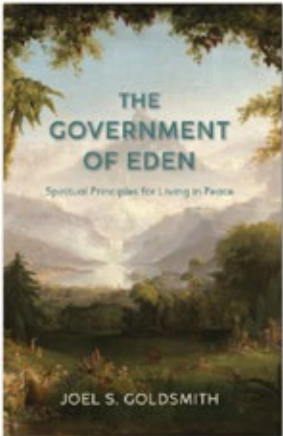
The Government of Eden

Chapter Four, "When We Are Tempted by Good and Evil"

"Aha! I am not to be fooled by appearances. There is no power given to man. All power is in God. All power is in Spirit. All power is in the Invisible..."

Joel Goldsmith
The Government of Eden, Chapter 4

Chapter Four in *The Government of Eden*, is powerful and direct—a mirror to our turbulent times. Because this important—and perhaps difficult—chapter is the longest in the book, we will work with it both in February and March. The central question throughout these pages asks, are there human solutions to the problems facing the world? If not, what can we do? Joel brilliantly dissects the human condition—the universal Prodigal Son experience—and lays out a path back to "the kingdom" which has ever been within.

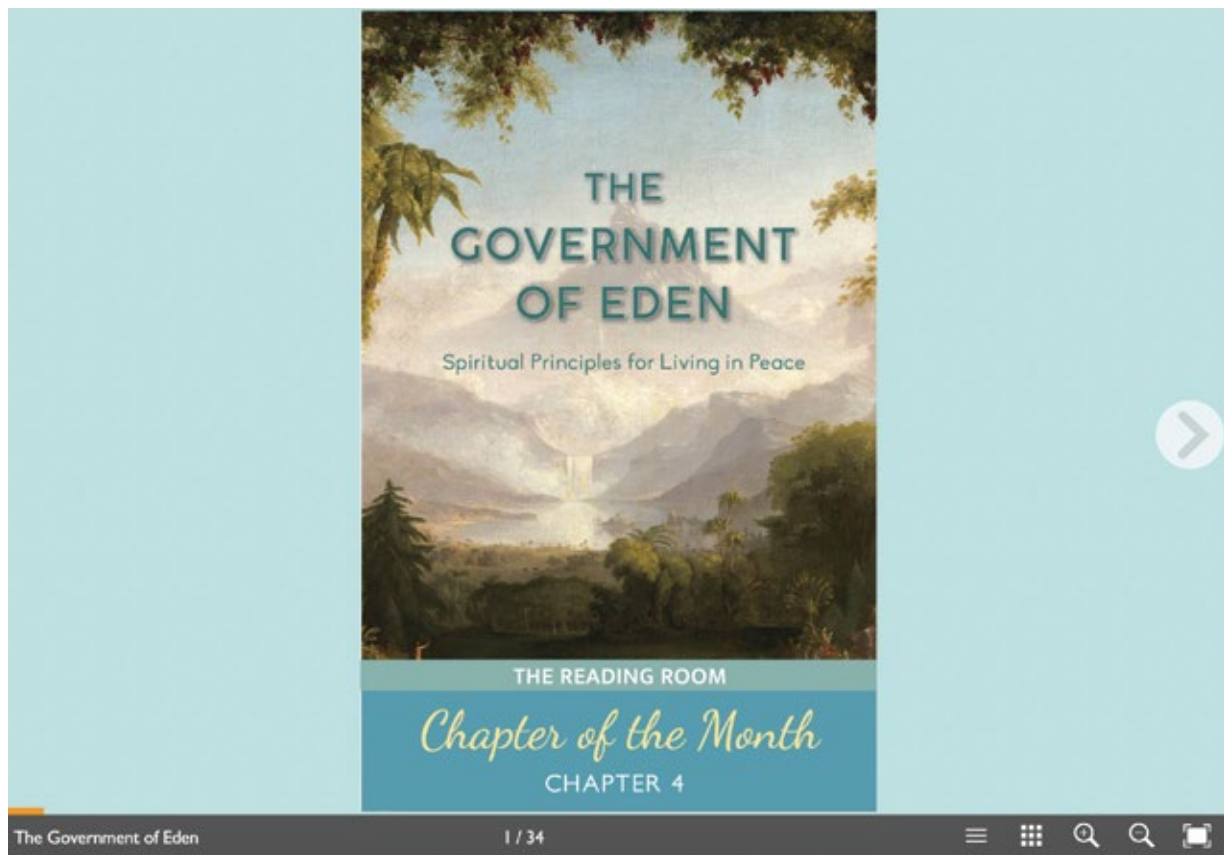


*The Government of Eden,
Chapter Four*

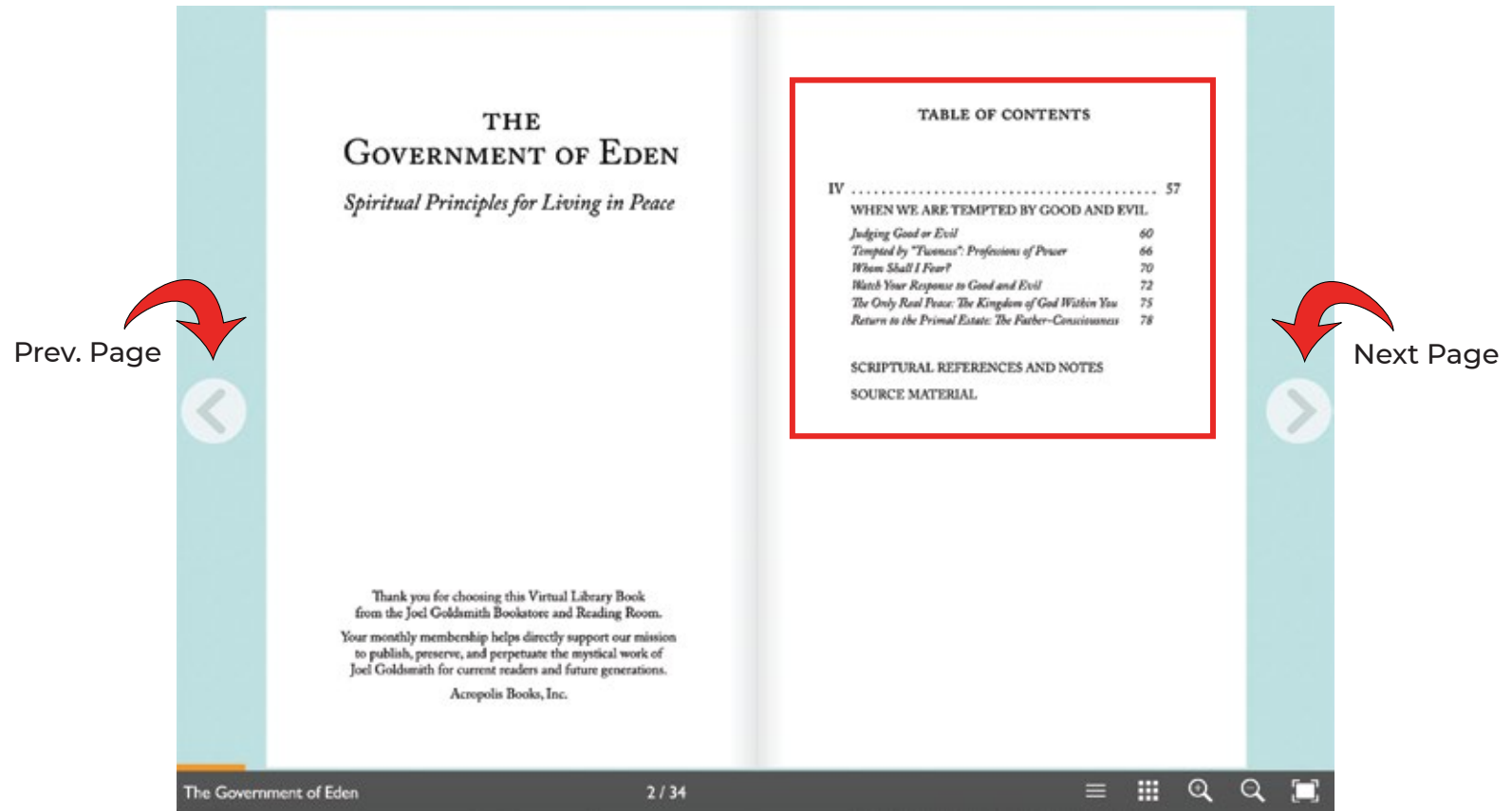
OPEN THIS
CHAPTER

NAVIGATING

Whether you are reading a single chapter, or an entire virtual book, the navigation tools are the same. Your book or chapter will open in a new browser tab. You will see the front cover of the book, an arrow indicating how to turn the page, and several tools along the bottom of the screen.

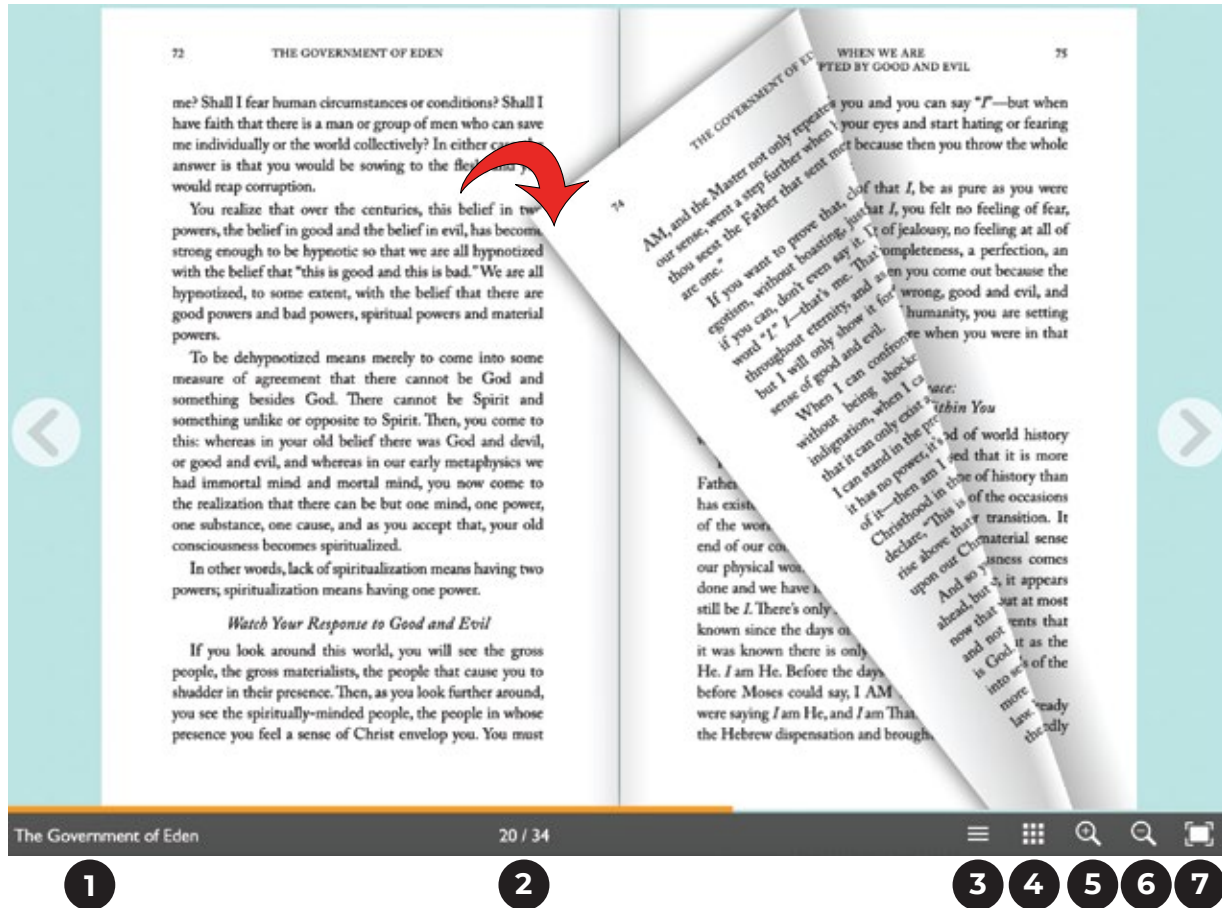


Use the arrows to turn pages as shown here.



Click on a title or number in the table of contents to jump right to that page in the chapter.

You can also grab a page corner with your mouse and turn it like a real book page.

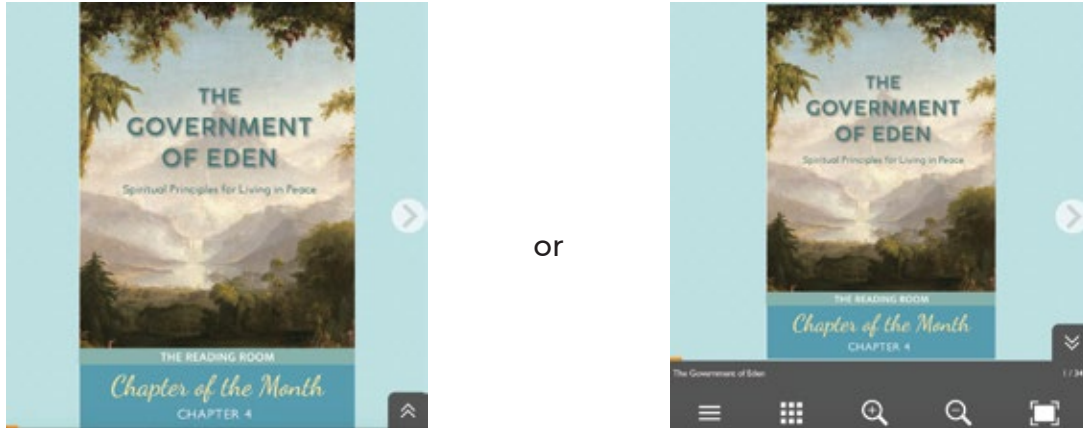


The tool bar along the bottom contains the following:

1. Book title.
2. Progress (also indicated by the orange bar).
3. Jump to table of contents.
4. Open page thumbnails to visually scan and jump to a page.
5. Zoom in.
6. Zoom out.
7. Open the chapter in full screen viewing.

TROUBLESHOOTING

Q: I am reading the chapter on a computer, but my screen looks like this.



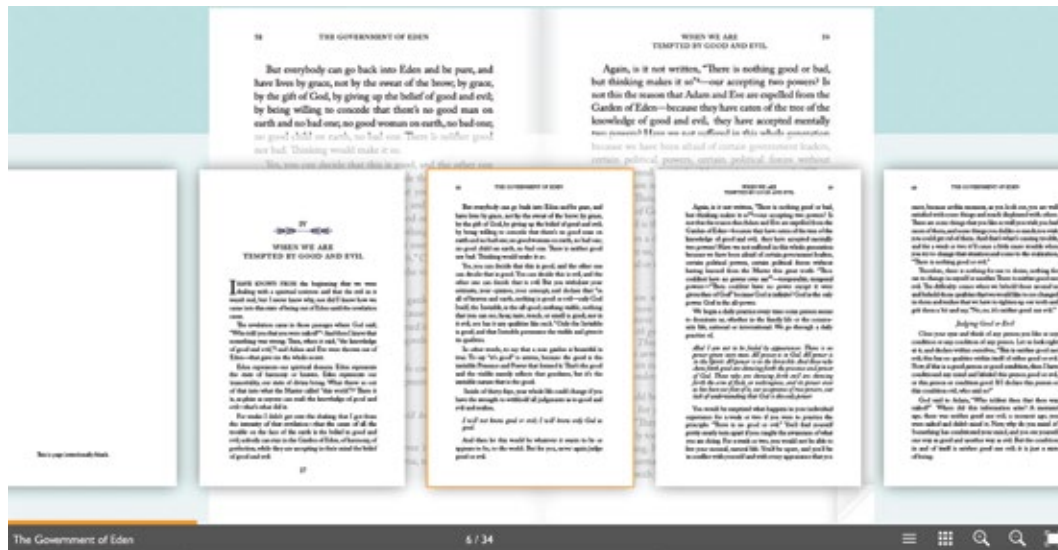
A: Your browser window is not large enough. Drag your window open to the width of your computer screen.

Q: I am reading the chapter on a computer, but my screen looks like this.



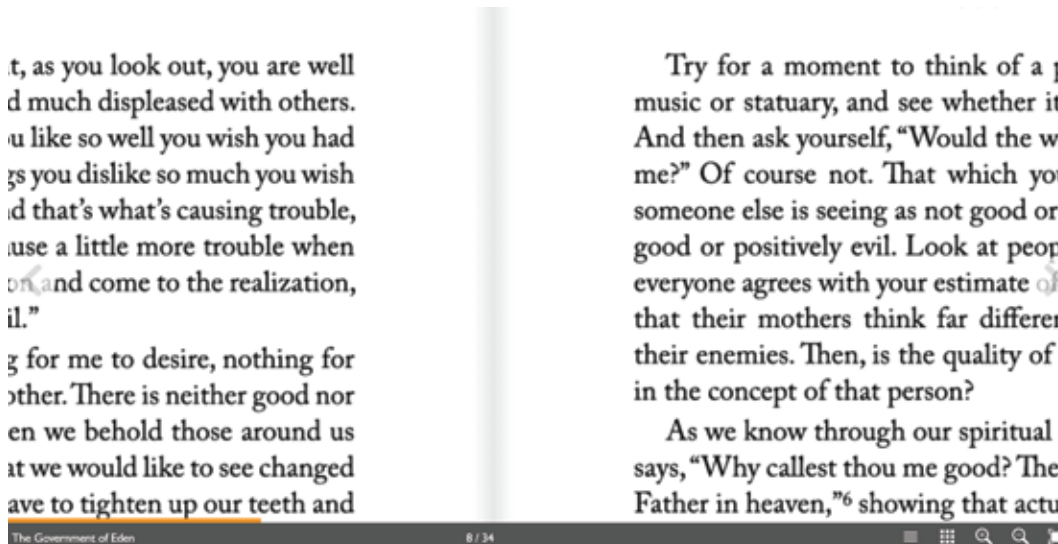
A: Your browser is zoomed in too far. In your browser menu choose View / Actual Size.

Q: Why am I seeing all these pages at the same time?



A: You clicked the thumbnails tool. Click again to close this tool.

Q: Why can't I see a full page?



A: You clicked the zoom-in tool. Click the zoom-out tool next to it.