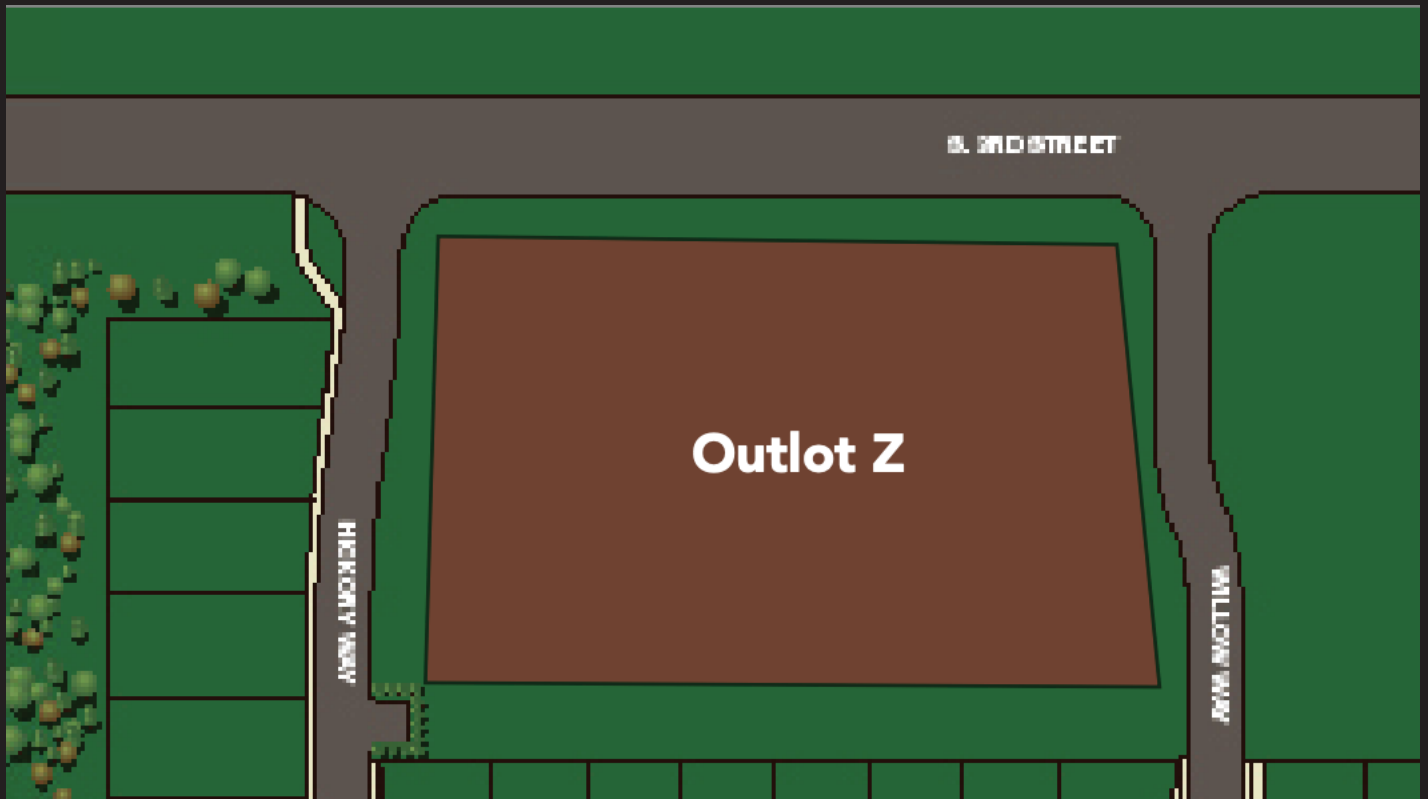
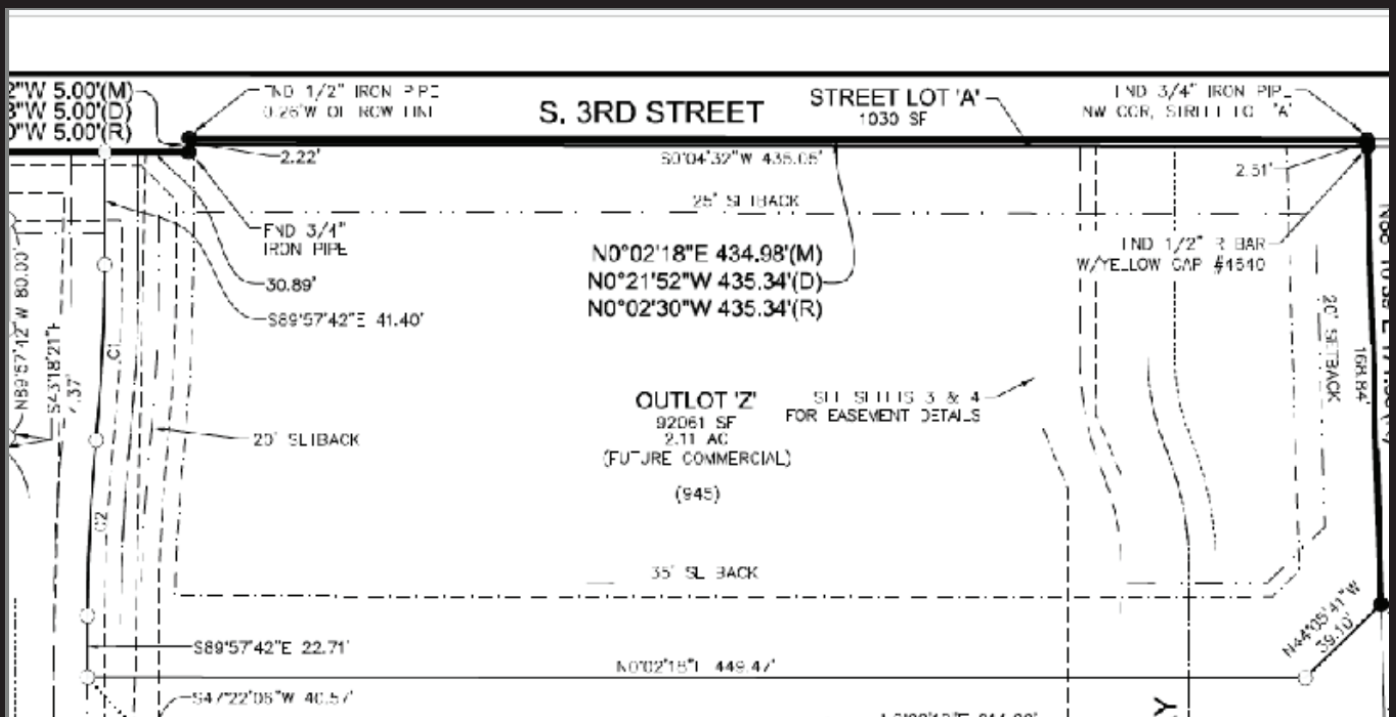
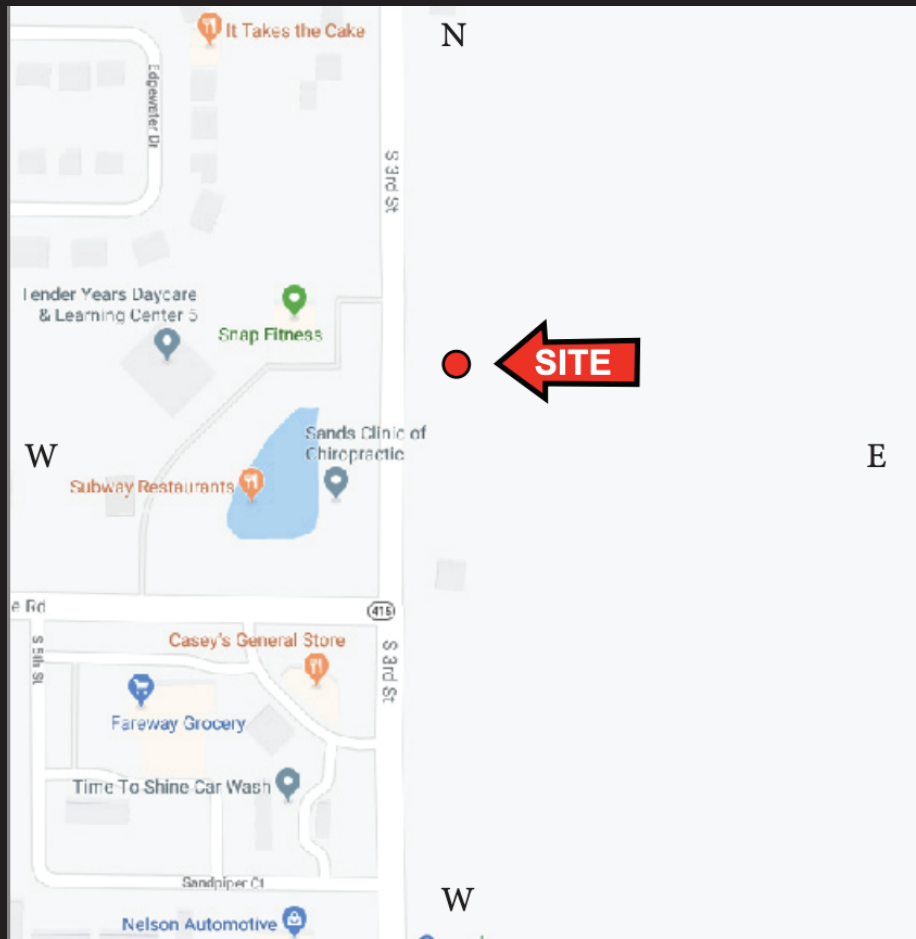


Crossroads at the Lakes- Plat 1, Polk City, IA



OVERVIEW

- Zoned C-2
- \$9.00 PSF
- 2.11 Acres
- Located on one of the main roads in Polk City, just NE of the busy 3rd St and Bridge Rd. intersection. Multi-family and single family neighborhoods within walking distance. High visibility area.



Jordan Kramer 563-920-3954 jordan@caliberiowa.com | Licensed in the State of Iowa | Caliberiowa.com