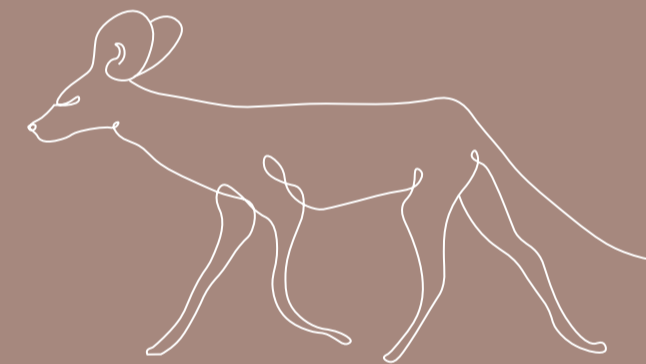




WILD THOUGHTS

Welcome to a camp that enriches one's soul and creates experiences that will transform your life. A place where unforgettable adventures and thrilling wildlife encounters are made. Providing innovative and creative exposure to the majestic world of Africa's nature.



CONTACT

Reservations

reservations@isambanecamp.com

+27 (078) 195 7384

Website

isambanecamp.com


ISAMBANE
BUSH CAMP

WHY US?

Our wilderness camp is Located deep within the heart of the Parsons Game Reserve (within the Greater Kruger), one of the wildest places in South Africa. Our eco-camp is conservation-minded, ensuring the wellbeing of cultures and wildlife for future generations.

RUSTIC LUXURY

PRIVACY

TRANQUILITY

WATERHOLE VIEW

HOME AWAY FROM HOME

ECO CAMP

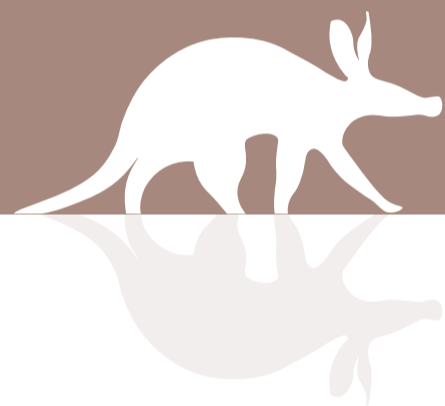
IMMERSE YOURSELF

Wildlife weave their way through the bushveld vegetation hugging the camp's perimeter, which provides the perfect natural habitat for a variety of species.



EXPERIENCE ISAMBANE

- Morning and Evening Game Drives
- Sundowners in the bush
- Bird watching
- Boma dinners around the fire
- Stargazing
- Bush walks (+/-2h)
- Spa and wellness



INCLUDED

- Tented accommodation
- Daily housekeeping
- All meals included
- Teas, coffees and snacks
- Game Drives (morning and evening safari)
- Drinks during Game Drives
- Free WiFi

EXCLUDED

- Alcoholic, non-alcoholic beverages
- International and domestic flights
- Transport to and from the reserve
- Parsons conservation levy
(R200 p vehicle / R300 pp)
- Laundry services
- Purchases from the boutique
- Certain special meal requests
- Any extra activities
- Bush walks (R450)
- Spa treatments

ROOM TYPES



- 3 Luxury tents
- 2 Classic tents

Our **luxury tents** have full-open serengeti style doors and large windows with the option of a drop down canvas to provide privacy.

- Queen XL bed • Private terrace • Coffee station
- En suite bathroom with bath tub, vanity, open shower, separate toilet • Walk-in dressing room • Standing fan

Our **Classic tents** offer a comfortably sleep for 2 adults, you will be able to witness the dramas of the African night unfolding, providing a fully immersive bush experience.

- Double XL bed • Private shower, vanity and dressing room
- Shared toilet a few steps away

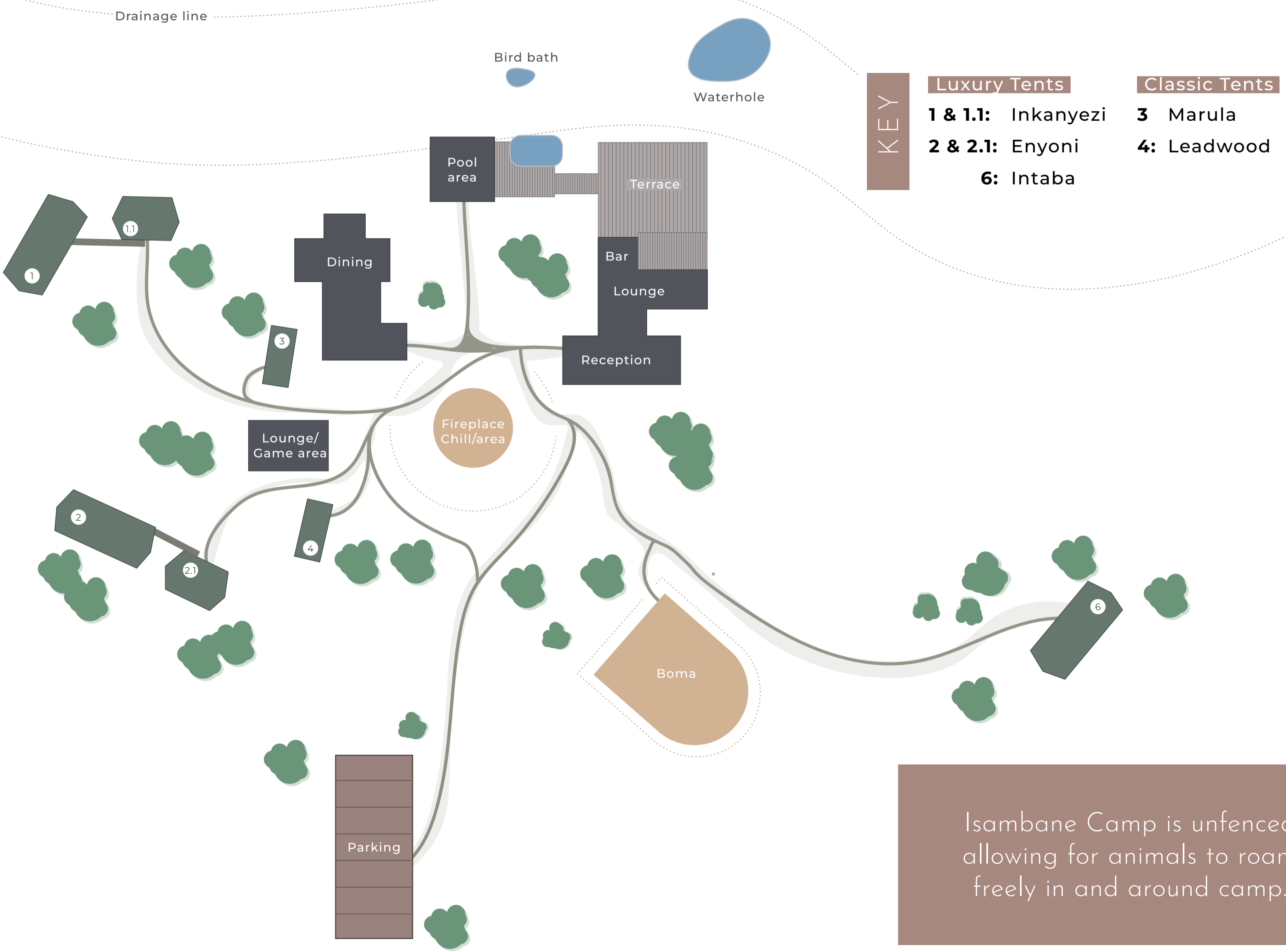
LODGE FACILITIES



- Main lodge with sitting area, books and games
- The Forager Bar
- Terrace overlooking our waterhole
- Swimming pool with amazing views
- Open dining room
- Outdoor relaxing area
- Open air boma around a camp fire
- Complimentary Wi-Fi in rooms and in main areas



LODGE LAYOUT



KEY

Luxury Tents

- 1 & 1.1: Inkanyezi
- 2 & 2.1: Enyoni
- 6: Intaba

Classic Tents

- 3: Marula
- 4: Leadwood

Isambane Camp is unfenced allowing for animals to roam freely in and around camp.

DAILY PROGRAMME

Early morning coffee/tea

Morning Game Drive (duration approx. 3 hours) -

Snacks, amarula coffee/tea provided at drink stop

Continental breakfast on arrival

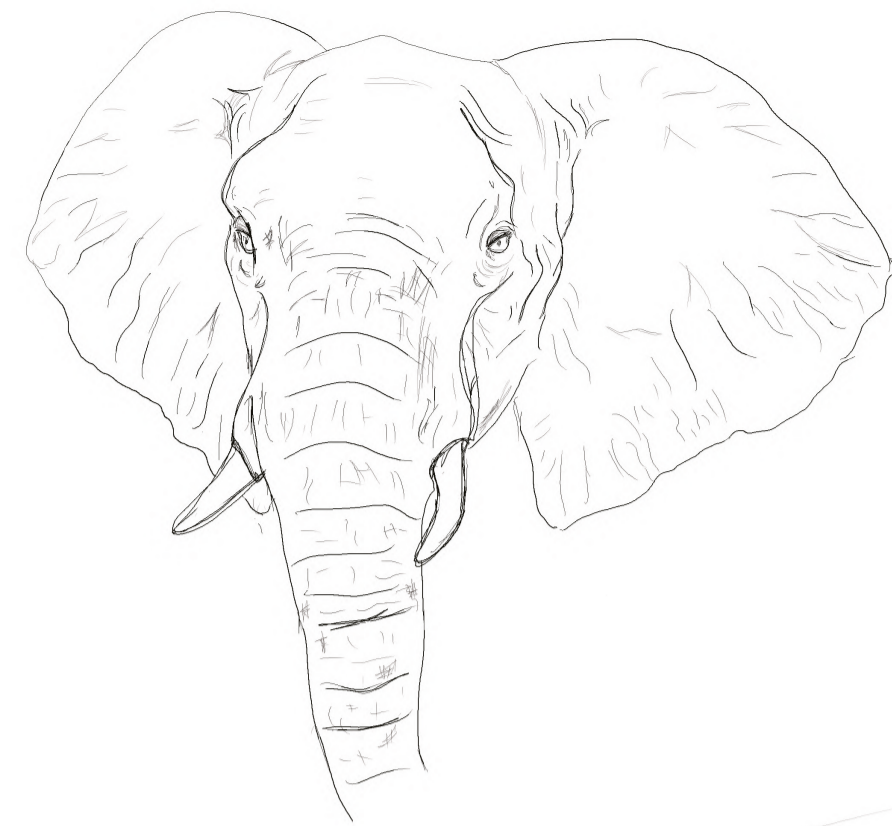
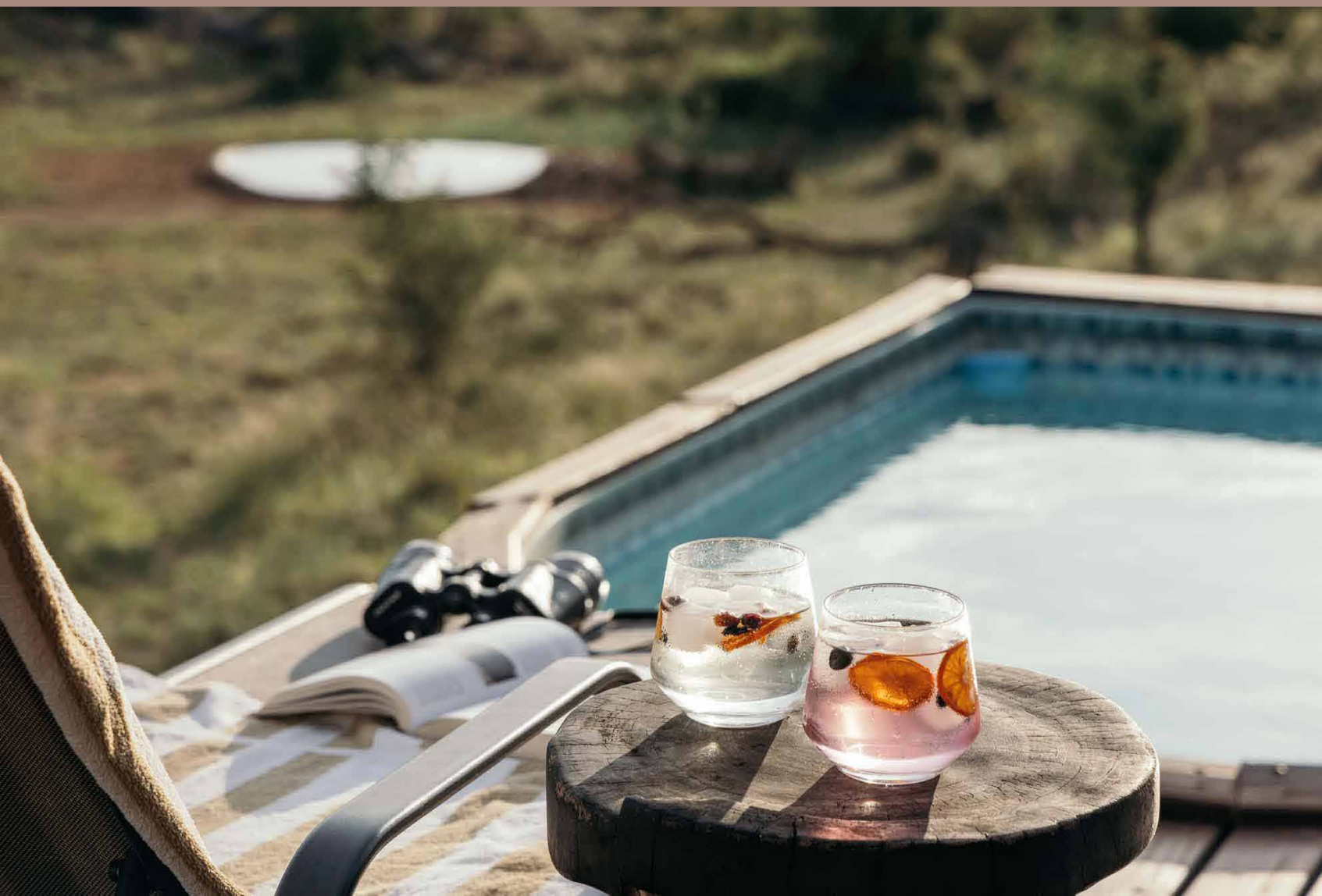
Relax by the deck, cool down in the pool overlooking at the waterhole. Ease into your holiday by enjoying a variety of massages at your room.

Lunch

Afternoon Game Drive (duration approx. 3 hours) -

Snacks and juice provided during the sunset drink stop.

Dinner in the boma or at our deck overlooking the waterhole.



TRAVEL OPTIONS

Isambane Camp is ± 60 minutes from Hoedspruit Eastgate Airport, and can be accessed by car on gravel roads.

Our closest airport is Johannesburg OR Tambo.

From Johannesburg to Hoedspruit area, there are 2 options for travelling:

- By car: rent a car or book a transfer (+/- 6h)
- By plane: book a domestic flight (+/- 1h flight)

To book a domestic flight to Hoedspruit Eastgate airport you can choose any of these two airlines:

- Cemair
- Airlink

We only offer private transfers from Hoedspruit to Isambane Camp from 12AM to 3PM if arranged prior to your arrival.

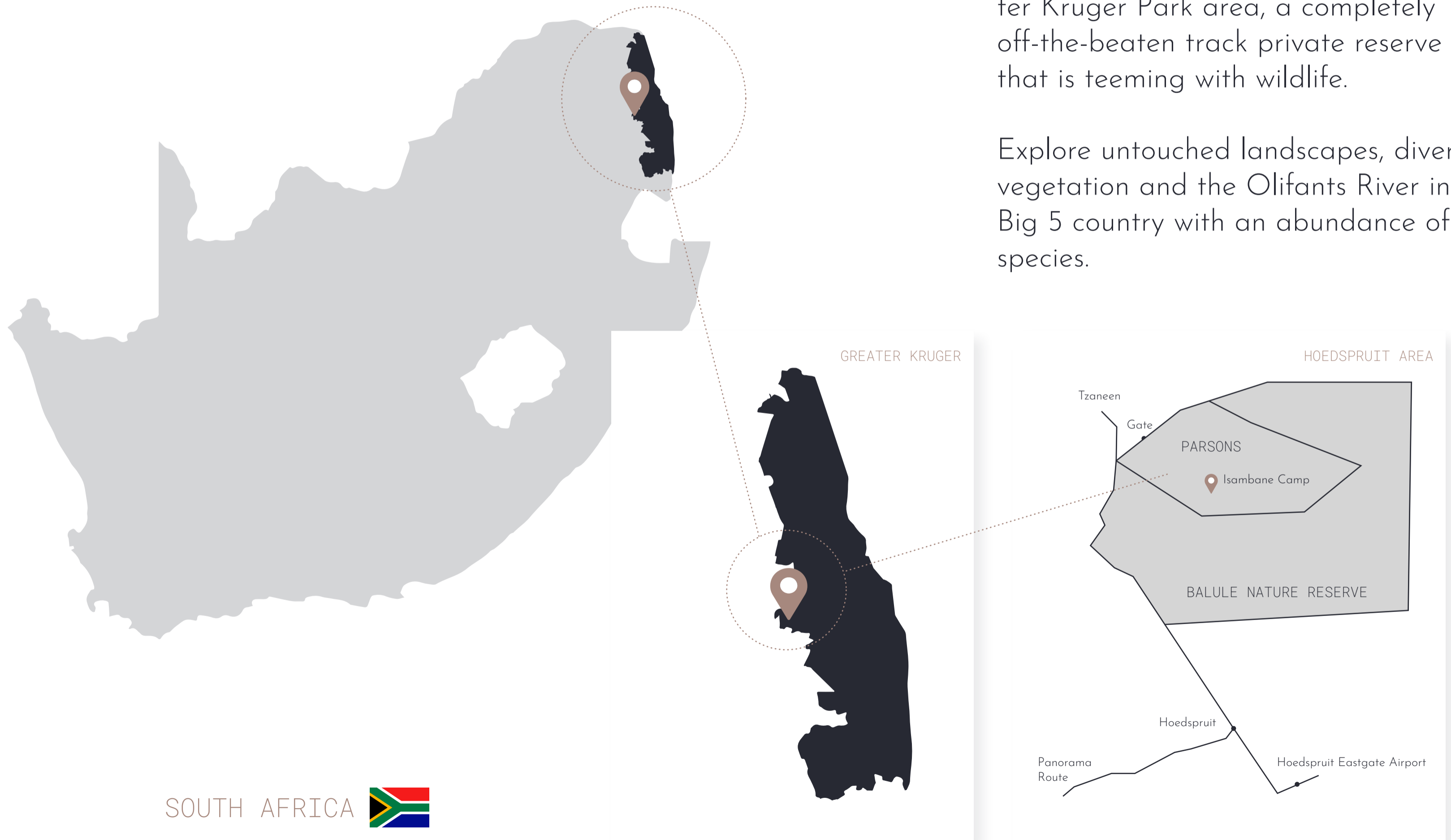
Come on a journey that immerses the senses and awakens the spirit!

LOCATION

Parsons Nature Reserve

Isambane is ideally located at Parsons, Balule Game Reserve within the Greater Kruger Park area, a completely off-the-beaten track private reserve that is teeming with wildlife.

Explore untouched landscapes, diverse vegetation and the Olifants River in Big 5 country with an abundance of species.



SOUTH AFRICA



HOW TO PACK

Casual, comfortable clothing in neutral colours, such as khaki, brown, olive and beige, are best for safaris and game walks.

Summer months

November to April (Hot and humid)

- Light cotton clothing
- T-shirts and shorts for everyday wear
- Long sleeved shirts and cotton trousers for evening wear (warmth and protection from mosquitoes)



Winter months

May to October (Extremes in temperatures can occur)

- Warm clothes are needed for the cold morning or evening activities (thick jackets, long pants, gloves and beanies)
- Light sweaters are sufficient for midday
- We provide a poncho/blanket on Game Drives

Others

For a comfortable safari experience we recommend:

- Sun hat, sunglasses and sunblock
- Video cameras, cameras and binoculars
- Insect repellent (also provided)
- Swimming costume/ bathing suits
- Comfortable walking shoes, tracking shoes and sandals to wear around the camp.





WEATHER

When is best to travel

South Africa is an all year round destination. Our dry winter is known for better game viewing as the animals concentrate on the existing waterholes and the grass is shorter and less dense for easier spotting.

Our wet summer brings with it not just the rain but the beginning of the "baby season" and the return of our migrant birds, restoring the summer sounds and colours.

By seasons

Spring
(September to November)



31°C



19°C



40mm

Autumn
(March to May)



31°C



17°C



10mm

Summer
(December to February)



37°C



25°C



150mm

Winter
(June to August)



28°C



11°C



5mm

