

B.

Berber Point 650

Delivering on the world-renowned Berber Point reputation for durability and performance, Berber Point 650 is an amazingly versatile and cost-effective carpeting solution. The fibre technology used for Berber Point 650 is Belgotex’s Stainproof Miracle fibre (Polypropylene).

Extended Specifications

Use Classification:	Medium/General Commercial
Construction:	Structured Needlepunch
Product Description:	Medium/General Commercial Structured Needlepunch
Recycled Content:	Face Fibre - Blend of Stainproof Miracle Fibre & Stainproof Miracle Fibre Eco (Certain Colours)
Fibre Type:	Stainproof Miracle Fibre (Polypropylene)
Standard Size - Broadloom:	4.2m
Standard Size - Tile:	50x50cm***



B.

Berber Point 650

Extended Specifications

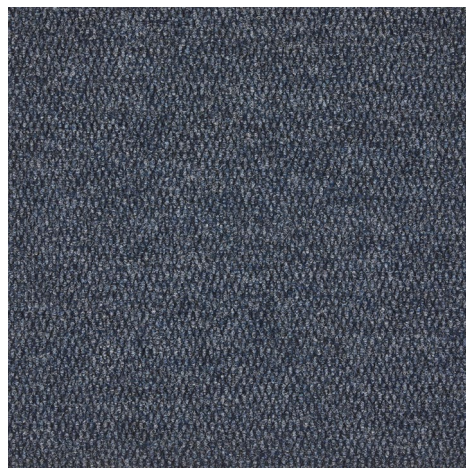
Total Thickness:	± 6mm on ResinBac	
Total Mass:	± 974g/m ² on ResinBac	
Fire Index:	2 (SANS 10177-4) on ResinBac	
Colour Fastness To:	i) Light	7 (ISO 105-B02)
	ii) Rubbing (Wet)	4-5 (ISO 105-X12)
	iii) Rubbing (Dry)	4-5 (ISO 105-X12)
	iv) Water	4-5 (ISO 105-E01)
Electrostatic Propensity:	≤ 2 kV (DIN 66095 Part 4)	
Static Control:	Permanent	
VOC Tested:	Pass (GBCSA/GBCA)	

** Weighted average.

***Belgotex BERBER POINT 650 to be installed as follows: 50×50cm & 100×100cm tiles in Tessellated, 25×100cm planks = Herringbone. As these custom offerings are not standard, minimum production quantities apply. Please contact your nearest Belgotex representative for more information on this.



B.



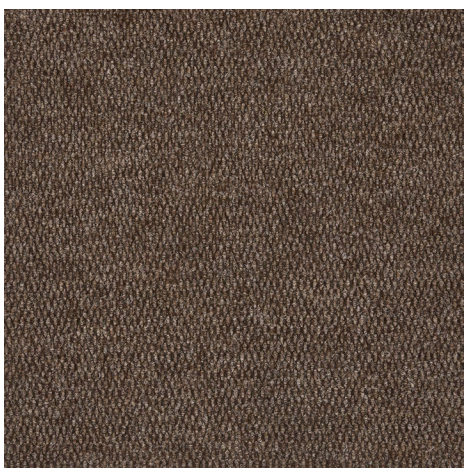
Blue Hull



Coral



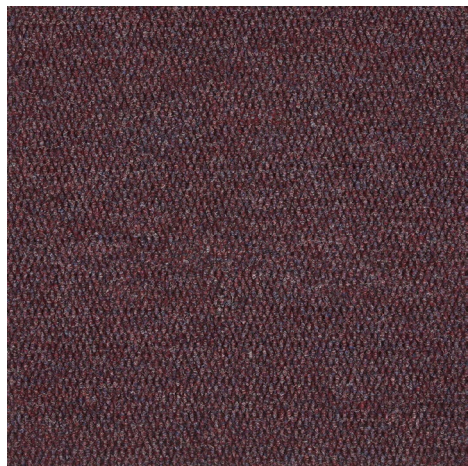
Crushed Shell



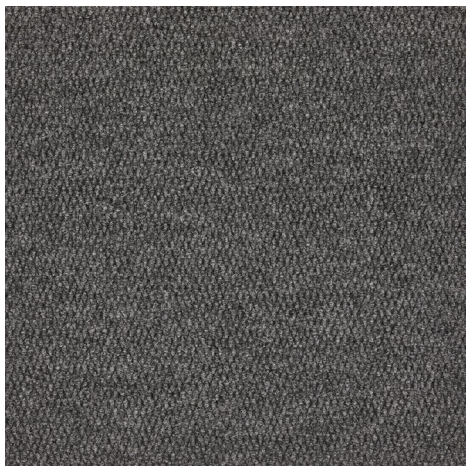
Galleon



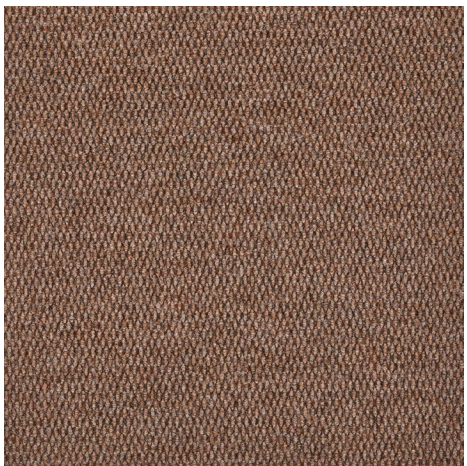
Kelp



Plankton



Rock

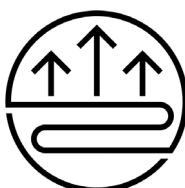


Wet Sand

Berber Point 650



Suitable for Staircases



Underfloor Heating



Medium/General Commercial



From Local & Imported Goods



Broadloom



(Certain Colours)



Commercial



Institution



Modular



Eco-Friendly



Bill of Quantities

- Belgotex BERBER POINT 650 at 4.2m wide ±6mm ResinBac medium/general commercial broadloom tiles are manufactured from Stainproof Miracle Fibre (Polypropylene).
- This product is to be laid in accordance with the SANS 10186 fitting code of practice.
- Belgotex BERBER POINT 650 ResinBac tiles to be installed in tessellated format only.
- Belgotex recommends the use of carpet protector mats where castor wheels are used.
- 5 year guarantee and 10 year warranty.
- Made in South Africa.
- Green Tag level A Gold rated certification.

*All product names and logos are trademarks of BELGOTEX FLOORCOVERINGS® (Pty) Ltd. © BELGOTEX FLOORCOVERINGS® (Pty) Ltd. All rights reserved. Warranty and guarantee to limitations and conditions. For details contact BELGOTEX FLOORCOVERINGS® (Pty) Ltd.