

B.



Berber Point 650

Extended Specifications

Use Classification	Medium/General Commercial
Construction	Structured Needlepunch
Product Description	Medium/General Commercial Structured Needlepunch
Recycled Content	Face Fibre – Blend of Stainproof Miracle Fibre & Stainproof Miracle Fibre Eco (Certain Colours) Stainproof Miracle Fibre (Polypropylene)
Fibre Type	4.2m
Standard Size - Broadloom	50×50cm***
Standard Size - Tile	ResinBac
Backing - Broadloom/Tile	± 6mm on ResinBac ± 6.5mm on NexBac***
Total Thickness	± 974g/m ² on ResinBac ± 3534g/m ² on NexBac***
Total Mass	2 (SANS 10177-4) on ResinBac 3 (SANS 10177-4) on NexBac***
Fire Index	Colour Fastness To:
	i) Light 7 (ISO 105-B02)
	ii) Rubbing (Wet) 4-5 (ISO 105-X12)
	iii) Rubbing (Dry) 4-5 (ISO 105-X12)
	iv) Water 4-5 (ISO 105-E01)
	Electrostatic Propensity ≤ 2 kV (DIN 66095 Part 4)
	Static Control Permanent
	VOC Tested Pass (GBCSA/GBCA)

** Weighted average.

***Also available in 50×50cm NexBac tiles, 100×100cm NexBac & 25×100cm NexBac planks. Belgotex BERBER POINT 650 to be installed as follows: 50×50cm & 100×100cm tiles in Tessellated, 25×100cm planks = Herringbone. As these custom offerings are not standard, minimum production quantities apply. Please contact your nearest Belgotex representative for more information on this.



Blue Hull
L = 26.70 Y = 4.99



Coral
L = 23.61 Y = 3.98



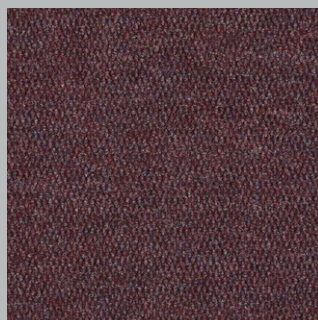
Crushed Shell
L = 44.69 Y = 14.32



Galleon
L = 26.66 Y = 4.97



Kelp
L = 15.56 Y = 2.01



Plankton
L = 20.87 Y = 3.21



Rock
L = 29.04 Y = 5.85



Wet Sand
L = 33.38 Y = 7.72

Berber Point 650

Medium/General Commercial:
Broadloom & Carpet Tile



(On Request)



Institution



Commercial



Broadloom



Modular



Eco-Friendly



Suitable for Staircases



Underfloor Heating



Medium/General Commercial



From Local & Imported Goods



GREEN BUILDING COUNCIL SA
MEMBER ORGANISATION

SABS
ISO 9001

SABS
ISO 14001

SABS
ISO 45001



Bill of Quantities

- Belgotex BERBER POINT 650 at 4.2m wide ± 6 mm ResinBac medium/general commercial broadloom & BERBER POINT 650 at 50x50cm ± 6.5 mm NexBac tiles are manufactured from Stainproof Miracle Fibre (Polypropylene).
- This product is to be laid in accordance with the SANS 10186 fitting code of practice.
- Belgotex BERBER POINT 650 ResinBac and NexBac tiles to be installed in tessellated format only.
- Belgotex recommends the use of carpet protector mats where castor wheels are used.
- 5 year guarantee and 10 year warranty.
- Made in South Africa.
- Green Tag level A Gold rated certification.

*All product names and logos are trademarks of BELGOTEX FLOORCOVERINGS®. (Pty) Ltd.
© BELGOTEX FLOORCOVERINGS® (Pty) Ltd. All rights reserved. Warranty and guarantee subject to limitations and conditions. For details contact BELGOTEX FLOORCOVERINGS® (Pty) Ltd.