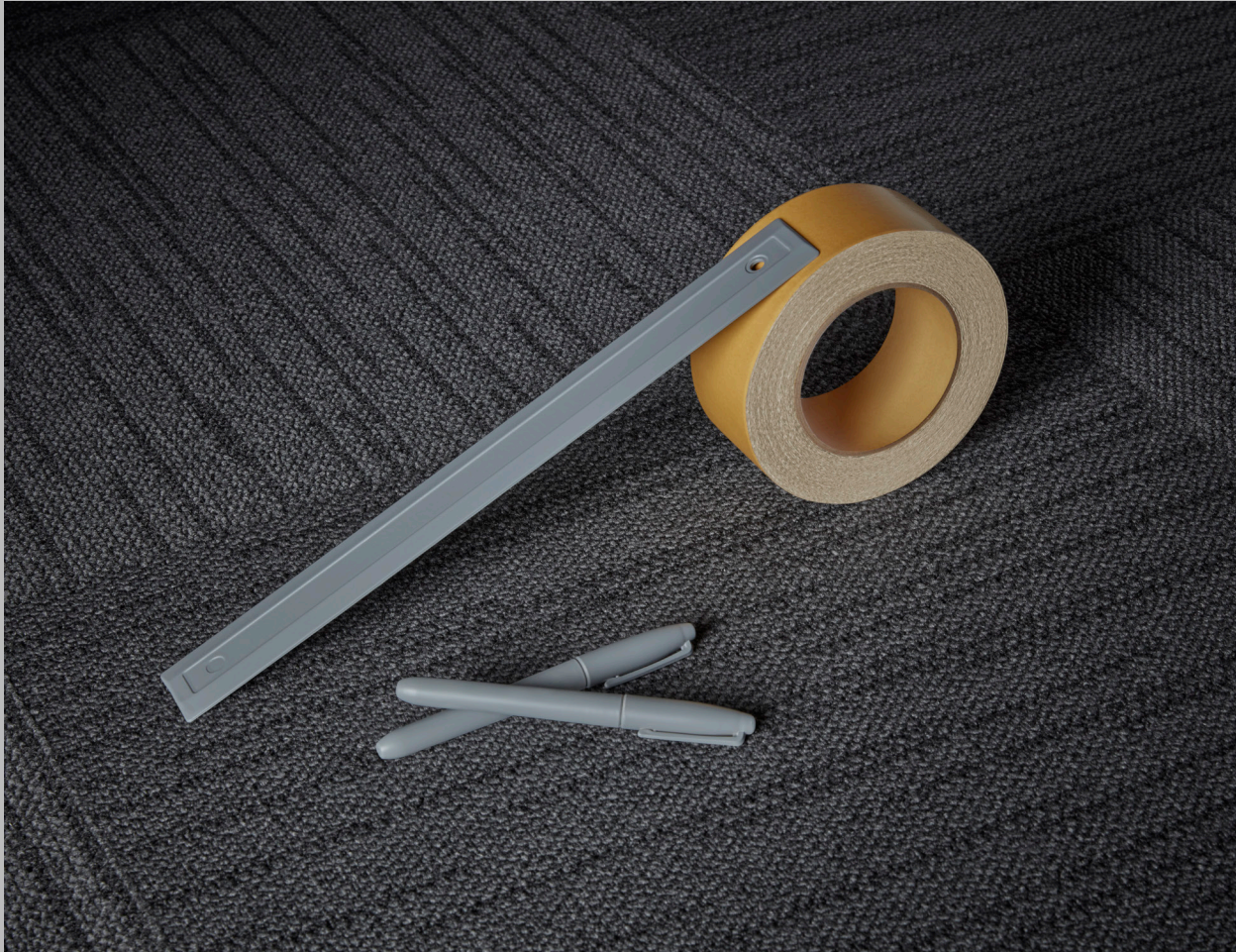


B.



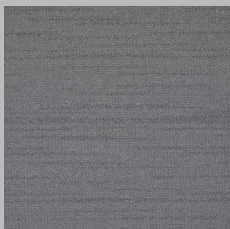
Accelerate

Extended Specifications

| | |
|--------------------------------|---------------------------------------------------------|
| Use Classification | Heavy Commercial - 33 (EN 1307) |
| Construction | Tufted Multi Scroll Loop Pile |
| Product Description | Heavy Commercial SDN Tufted Loop Pile Bitumen Tile - SS |
| Recycled Content | Yarn - Stainproof SDX Eco (Certain Colours) |
| Yarn Type | Backing - EcoBac S3 (On Request) |
| | Stainproof SDX (Solution Dyed Nylon-6) |
| Pile Height | ± 2 - 3.5mm |
| Total Thickness (NexBac SX) | ± 5mm |
| Total Mass (NexBac SX) | ± 3500g/m ^{2**} |
| Standard Tile Size | 50x50cm ^{***} |
| Standard Backing Type | NexBac SX |
| Machine Gauge | 1/10" |
| Stitches/10cm | 60 (±1) |
| Fire Classification | 2 (SANS 10177-4) |
| | Bfl-s1 (EN 13501) |
| | Class 1 (ASTM E 648-08) |
| Colour Fastness To: | |
| i) Light | 8 (AATCC 16/ISO 105 B02) |
| ii) Rubbing (Change of Colour) | 4/5 (AATCC 165/ISO 105 X 12) |
| iii) Rubbing (Staining) | 5 (AATCC 165/ISO 105 X 12) |
| Electrostatic Propensity | ≤ 2kV (ISO 6356/EN 1307) |
| Static Control | Permanent |
| Sound Absorption (NexBac SX) | a _w 0.15 (EN ISO 354:2003) |
| Sound Insulation (NexBac SX) | ΔL _w = 18dB (ISO 717-2) |
| Thermal Resistance (NexBac SX) | 0.0638m ² .K/W (ISO 8302) |
| VOC Tested | Pass (GBCSA/GBCA) |
| Castor Chair Suitability | A: Intense Use (NF EN 985) |
| Guarantee | 5 Years |
| Limited Wear Warranty | 15 Years |

B.

Flex



Calm
LRV: L=47.46 Y=16.37



Grounded
LRV: L=29.93 Y=6.21



Strength
LRV: L=23.23 Y=3.87



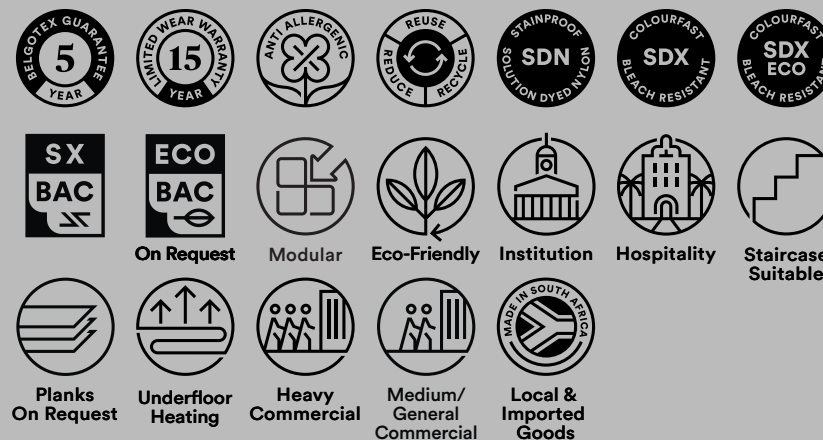
Comfort
LRV: L=39.45 Y=10.92



Solid
LRV: L=35.87 Y=8.94

Accelerate

The Pace of Pattern.



**Weighted Average

***Also available in 50x50cm EcoBac - S3 tiles, 25x100cm SX/EcoBac - S3 plank & 100x100cm SX/EcoBac - S3 tiles. As these custom offerings are not standard, minimum production quantities apply. Please contact your nearest Belgotex representative for more information on this. Belgotex Accelerate 25x100cm planks to be installed in the following directions: Herringbone, Ashlar, Random Ashlar & Colour Mix.

Bill of Quantities

- Belgotex Accelerate 50x50cm tiles are manufactured from Stainproof SDX (Solution Dyed nylon-6 for extreme conditions).
- This product is to be laid in accordance with the SANS 10186 fitting code of practice.
- Belgotex Accelerate 50x50cm & 100x100cm tiles to be installed in the following directions: Tessellated, Ashlar, Random Ashlar, Brick, Monolithic, Colour Mix & Random.
- Belgotex recommends the use of Carpet protector mats where castor wheels are used.
- Green Tag A level plus certification • 15 Yr Warranty & 5 Yr Guarantee • Made in South Africa

*All product names and logos are trademarks of BELGOTEX FLOORCOVERINGS® (Pty) Ltd.
© BELGOTEX FLOORCOVERINGS® (Pty) Ltd. All rights reserved. Warranty and guarantee to limitations and conditions. For details contact BELGOTEX FLOORCOVERINGS® (Pty) Ltd.