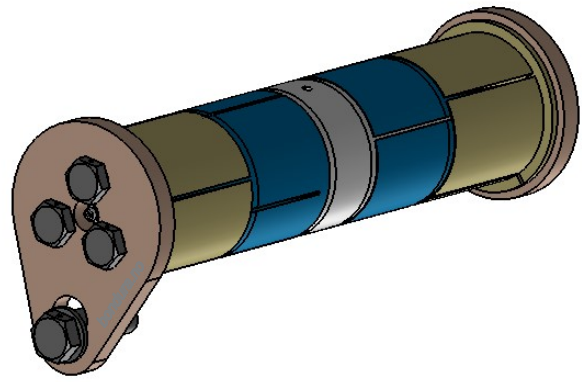
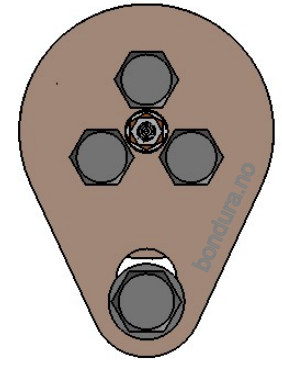
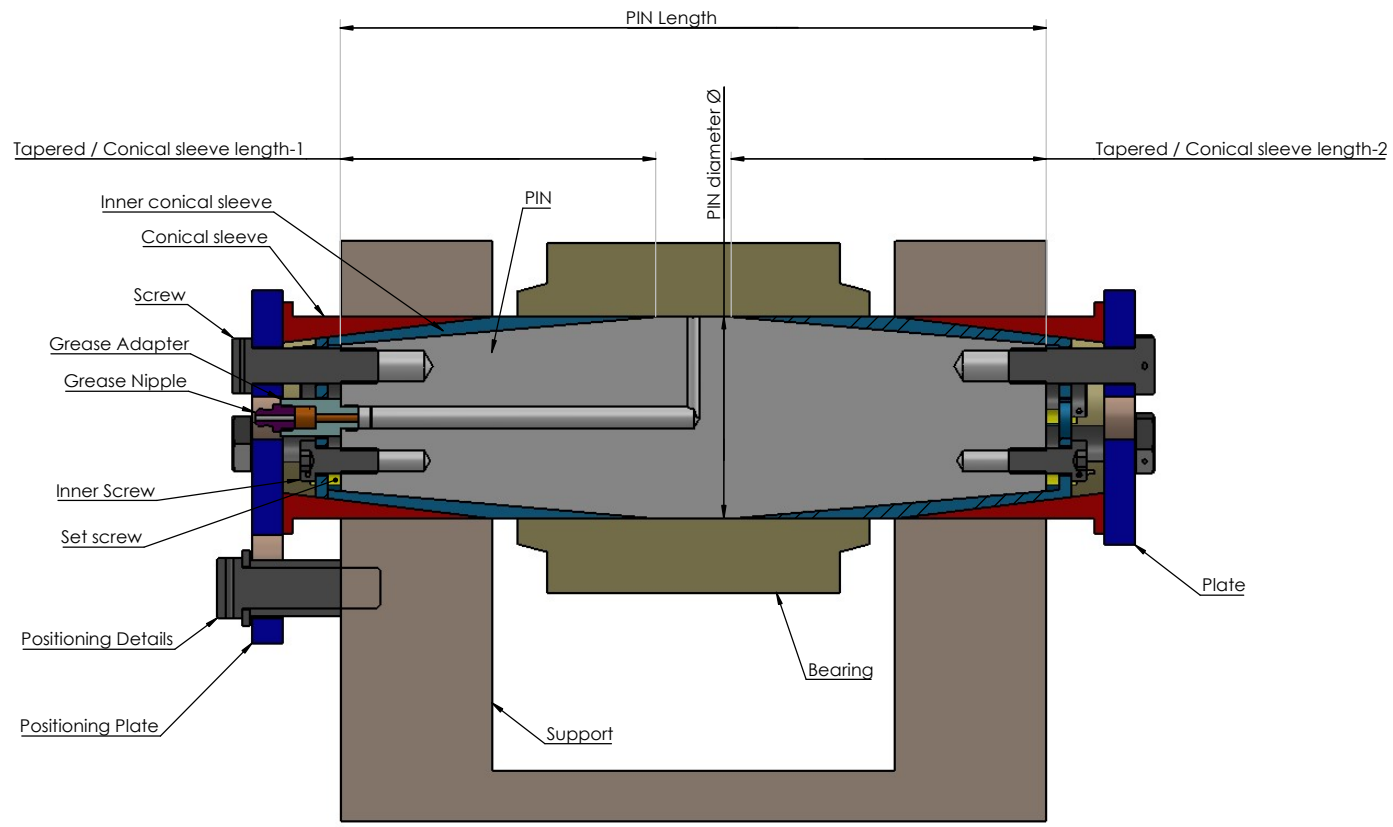


REVISIONS TABLE			
REV.	DESCRIPTION	DATE	APPROVED
A	Drawing traceability	16.08.2004	AAg
B	Ø30-500 was Ø70-320	22.01.2013	TorG
C	Updates for DNV Approval 2017	01.08.2017	ØK



Detailed explanation of a bondura® assembly, as per Bondura Technology's Material Traceability List

Example: bondura DUAL 66.080.0280.L-125.125

bondura® type: DUAL 66  
 PIN diameter: Ø80 mm  
 PIN length: 280 mm  
 lubrication: L= single lubrication  
 D= double lubrication  
 U= without lubrication

Tapered / Conical sleeve length-1: 125 mm  
 Tapered / Conical sleeve length-2: 125 mm

The bondura® pivot pin is a patented product and is thus protected under patent legislations and product rights.

Date: 20.08.2001	Drawn by: Tor	App. by: ØK	Project used:	Size: A2
Product Description: bondura DUAL 66 Ø30-Ø500				Sheet: 1 of 1
GENERAL ARRANGEMENT				Drawing No.: GA-0345
Material:	Weight: 25.33 kg	Ref. to:	Module:	Art no:
Status: Approved				Revision: C