



Totally enclosed fan-cooled (TEFC) motor in all models.

## LifeStar® MV Medium Head Aquatic Pump

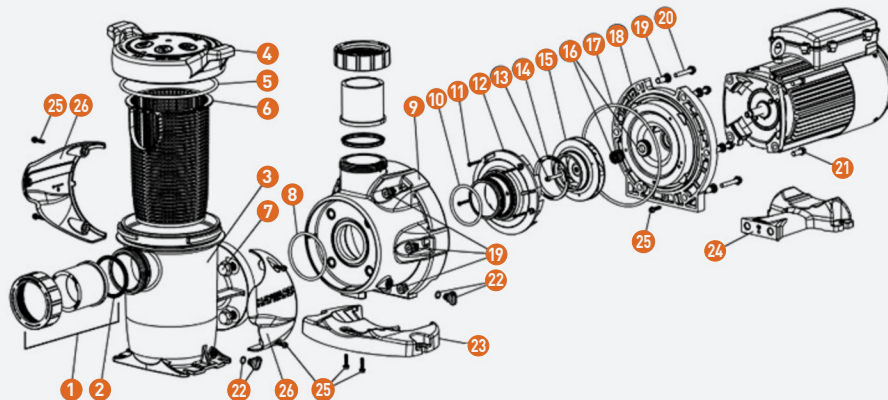
2, 3, 5, AND 7 HP

### KEY FEATURES

- Ideal for Sensitive Aquatic Environments, Fresh or Salt Water Systems
- Corrosion Resistant GFPP Housing for Long Term Performance
- True Union 2-1/2" x 3" Socket End Connections
- Modular Strainer Basket Design – Can Be Mounted Remotely
- Oversized Strainer Basket with HDPE 1/8th Perf Basket
- 3" ANSI Class 150 Flange Connection from Pump to Basket
- Silicon Carbide/Silicon Carbide Shaft Seal
- All Wetted Hardware Manufactured from 316 Stainless Steel
- FPM Seals Standard
- Available In 1-phase and 3-phase Models
- Industrial Grade TEFC Motors Standard with 220-240, 190/380-415, 190/380-415, 50Hz and 208-230, 208-230/460, 575, 60Hz Voltage
- High Efficiency Enclosed Impeller
- Self-Priming Pump – Up to 10 feet
- For Indoor and Outdoor Use
- UL778 Listing

## TECHNICAL INFORMATION

### EXPLODED VIEW



### SPECIFICATIONS

<b>PUMP HOUSING</b>	Glass Filled Polypropylene
<b>CONNECTIONS</b>	2-1/2" x 3" True Union CPVC Socket Schedule 80
<b>MOTOR SHAFT</b>	303 SS (Non-Wetted)
<b>SHAFT FACE SEAL</b>	Silicon Carbide/Silicon Carbide
<b>SHAFT SECONDARY SEAL</b>	FPM
<b>ALL WETTED HARDWARE</b>	316 SS (Impeller Insert, Impeller Screw and 2 Diffuser Screws)
<b>MAIN HOUSING GASKET</b>	FPM

<b>MOTOR BOLTS</b>	316 SS
<b>HOUSING BOLTS</b>	316 SS
<b>MOTORS</b>	Single and Three Phase - Totally Enclosed Fan Cooled (TEFC)
<b>HP RATINGS</b>	2, 3, 5, 7
<b>STRAINER BASKET</b>	HDPE, 1/8" Perf
<b>VOLTAGES</b>	220-240, 190/380-415, 190/380-415, 50Hz 208-230, 208-230/460, 575, 60Hz

# LifeStar® MV Medium Head Aquatic Pump

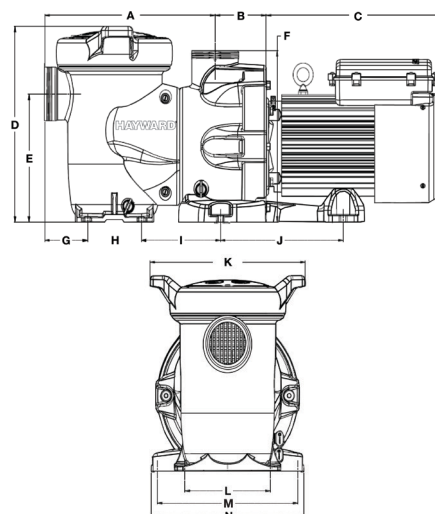
2, 3, 5, AND 7 HP

## TECHNICAL INFORMATION, CONTINUED

### PARTS LIST

1. Union Connector Kit (Includes Union Nut, Union Connector, Union Gasket - 2 each)
2. Union Gasket
3. Strainer Housing with Drain Plug
4. Strainer Cover Kit (Includes Strainer Cover, Lock Ring, O-Ring)
5. Strainer Cover O-Ring
6. Strainer Basket
7. Strainer Housing Flange Bolt/Washer - 4 each
8. Strainer Housing Flange O-Ring
9. Pump Housing with Drain Plug
10. Diffuser O-Ring
11. Diffuser Screws (4 Pack)
12. Diffuser, 2-7 HP
13. Impeller Screw
14. Impeller Ring, 2-7 HP
15. Impeller with Impeller Screw, 2-7 HP
16. Shaft Seal Assembly
17. Pump Housing O-Ring
18. Seal Plate
19. Housing Insert/Seal Plate Spacer
20. Housing Bolt
21. Motor Bolt (4 Pack)
22. Drain Plug with O-Ring
23. Pump Housing Base
24. Motor Support Base
25. Base Screws (7 Pack)
26. Right and Left Side Plate Set

### DIAGRAM

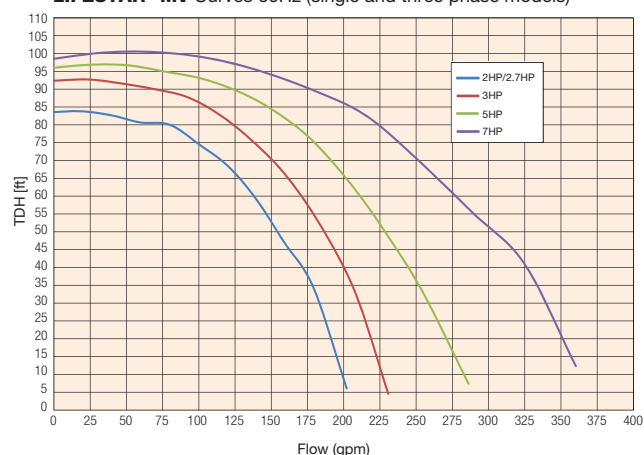


### DIMENSIONS

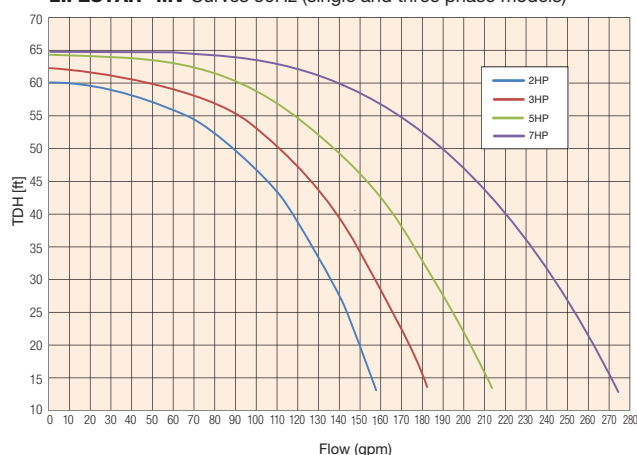
A	B	C	D	E	F	G	H	I	J	K	L	M	N
in / mm	in / mm	in / mm	in / mm	in / mm	in / mm	in / mm	in / mm	in / mm	in / mm	in / mm	in / mm	in / mm	in / mm
14.07 / 357	4.23 / 107	14.94 / 379	13.95 / 354	9.13 / 232	12.23 / 311	3.54 / 90	4.44 / 113	6.53 / 166	10.14 / 258	12.76 / 324	7.00 / 178	11.55 / 293	12.50 / 317

### PUMP PERFORMANCE CURVES

**LIFESTAR® MV Curves 60Hz (single and three phase models)**



**LIFESTAR® MV Curves 50Hz (single and three phase models)**



### ADDITIONAL FEATURES



3" ANSI standard flanged connection allows strainer basket to be removed and mounted remotely.



LifeStar® MV-VS with variable speed pump featuring digital control interface that can be rotated on the pump or detached and wall mounted, allowing convenient access and viewing.

**COMING SOON!**



Hayward is a registered trademark of Hayward Industries, Inc. © 2018 Hayward Industries, Inc.

USA: 1.888.429.4635 • Fax: 1.888.778.8410 • One Hayward Industrial Drive • Clemmons, NC 27012 • Email: hfcsales@hayward.com  
 Canada: 1.888.238.7665 • Fax: 1.905.829.3636 • 2880 Plymouth Drive • Oakville, ON L6H 5R4 • Email: hflowcanada@hayward.com  
 Visit us at: haywardflowcontrol.com