

micropsiindustries

MIRAI



Hand-Eye Coordination for
Industrial Robots

Tackle Variance in Production

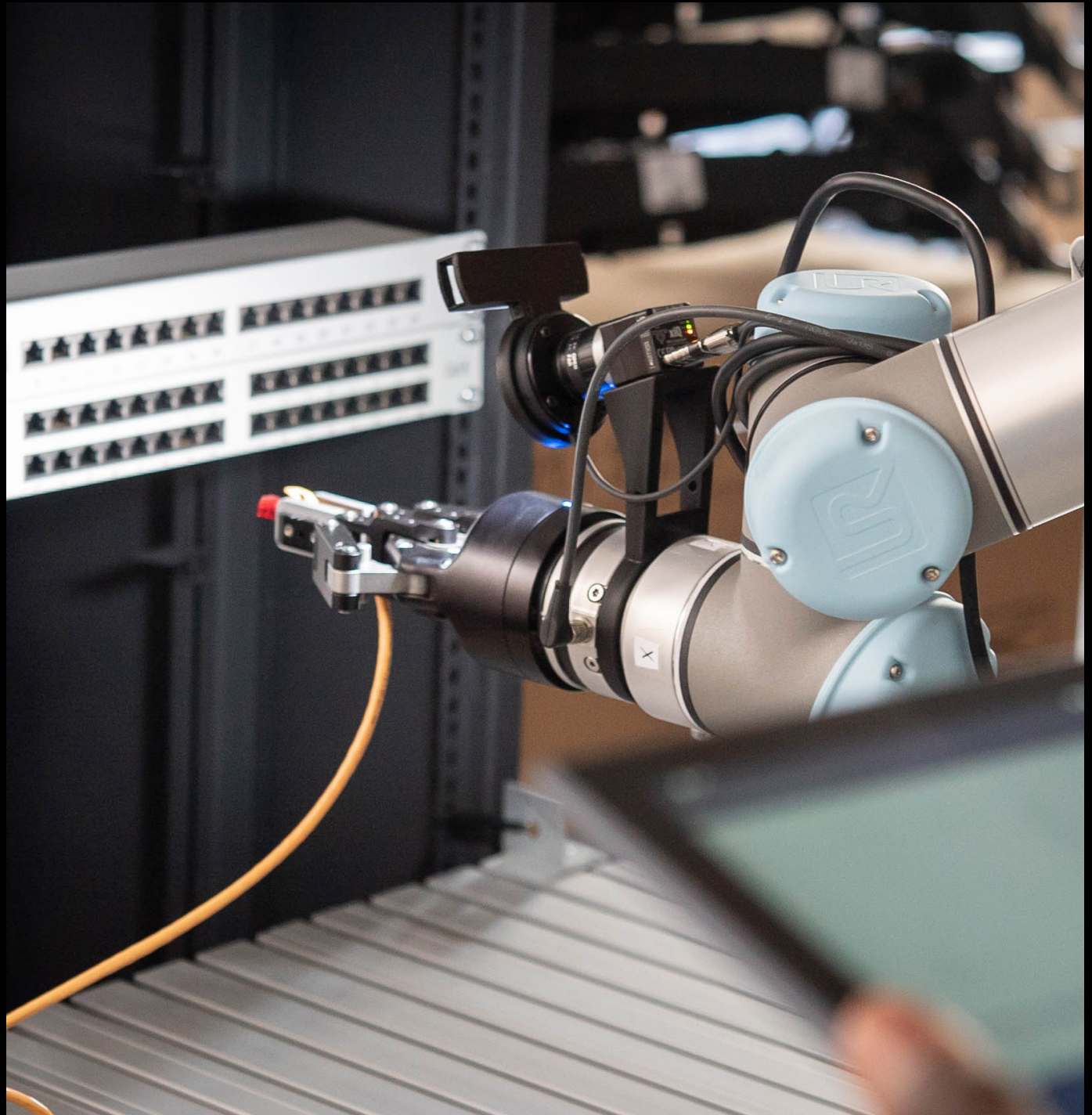
A VISION- BASED ROBOT CONTROL SYSTEM FOR HANDLING VARIANCE

Meet the MIRAI System

micropsi industries' MIRAI is a vision-based robot control system that enables industrial robots to deal with variance in position, shape, or movement. Using machine learning, MIRAI generates robot movements in real-time, as opposed to executing actions that must conform to a highly controlled, highly modeled environment.

Deploy MIRAI in assembly, quality inspection, machine tending, contour following, or other applications. MIRAI may be used for multiple steps within a task. It can also be flexibly retrained for new tasks. Skills are not programmed but trained through human demonstration in a few days — no knowledge of programming or AI necessary.

VISIT US AT WWW.MICROPSI-INDUSTRIES.COM



BENEFITS OF MIRAI

Variance Handling

Industrial robots with MIRAI are able to deal with variance in a workspace, performing tasks that would be very hard or impossible to hand engineer.

Easy Deployment

Customers can quickly and easily train or retrain robot movements by themselves in just a few days. No knowledge of programming or AI is required.

Application Flexibility

Because MIRAI-enabled robots learn many tasks, they can be trained and retrained for various process steps.

Cost Effectiveness

MIRAI is a cost-effective solution for highly complex tasks. Expensive, special-purpose systems are not necessary anymore.

HOW DOES IT WORK?

MIRAI augments the robot's native controller, enabling machines to perceive their work environment. Through AI, MIRAI-enabled robots observe actions performed by a human operator and then imitate those actions. Observations are recorded by a camera attached to the robot's wrist and/or situated at a fixed position proximate to the workspace. To train the robot, a human user performs and records repeated demonstrations of a task by manually guiding the robot by the robot's wrist. The recordings are then transformed into a vision-based, real-time robot control schema.



Certified

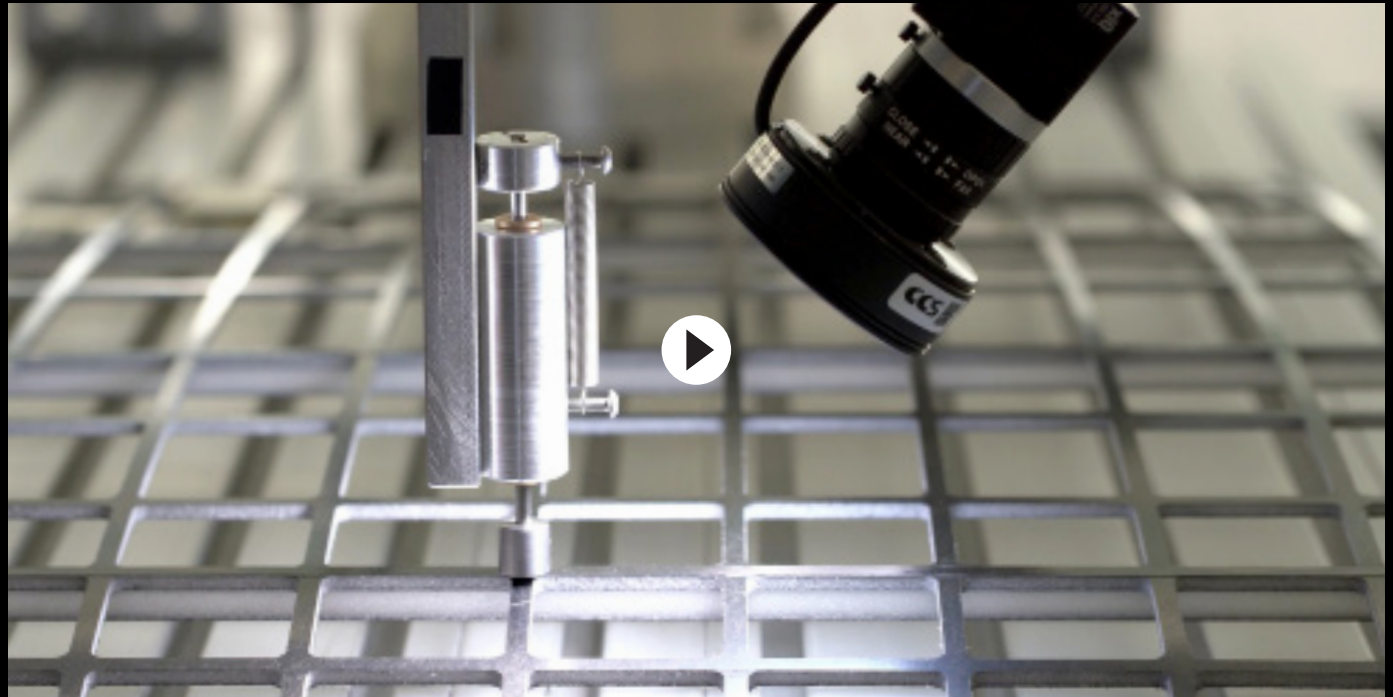
UNIVERSAL ROBOTS+

ABB

Compatible

MIRAI PACKAGE

- 1 x MIRAI ux-1 robot controller
- 1 x L-mount for controller box
- 1 x universal AC power supply DC19V/120W
- 1 x AC power cord for EU and US region
- 2 x wireless antennas
- 1 x Ximea xiQ USB3 camera
- 1 x USB3 cable
- 1 x Fujinon lense
- 2 x Camera fixtures for UR robot arms
- 4 x mounting screws for camera fixture
- 1 x USB pendrive with MIRAI URCaps plugin and product documentation



WATCH DEMONSTRATIONS OF THE MIRAI SYSTEM
ON [YOUTUBE](#)

FOLLOW US ON LINKEDIN, FACEBOOK, TWITTER, YOUTUBE
@ MICROPSI INDUSTRIES

TECHNICAL DETAILS

Compatibility:
Universal Robots and ABB

Certifications and standards:
CE, FCC, RoHS

Dimensions:
MIRAI controller box (210mm x 177mm x 45mm)

License type:
One-time purchase or monthly payments

CONTACT US

Questions about MIRAI and its use cases?
Want to discuss your automation tasks with an expert? Get in touch:

Europe Office: +49 30 549 05 706
US Office: +1 718 440 7353

solutions@micropsi-industries.com

OFFICES

micropsi industries GmbH
Karl Marx Str. 58
12043 Berlin, Germany

micropsi industries USA, Inc
NewLab – micropsi industries
19 Morris Ave, Bldg 128
Brooklyn, 11205, USA