

# RLX B 12/24 VDC Floodlight - Installation Guide

The RLX series is created to endure even the most demanding applications. As a part of the RLX series it is made to last, sealed and solid.

To meet performance expectations, it is important to observe that the RLX floodlight is mounted and pointed as advised, since the light beam is optimized for specific use and operation. To attain the long lifetime, please make sure that the heat sink on the back of the chassis has an adequate passage to allow air to flow freely – this for the highest possible cooling performance.

## Content

Fully assembled RLX B floodlight  
Installation guide  
Recyclable cardboard

## Required tools

2x 13mm combination spanners  
Wire stripper

## Input

Input voltage 9-36VDC  
Rated power 40W  
Current at 24VDC 1,6A  
Protection features  
- Reverse voltage  
- Surge and transient  
- High temperature

## General specifications

Operating temp. (Ta) -40°C to +55°C  
Storage temp. -40°C to +80°C  
IP rating IP 66/67/68



### OPTICAL RADIATION

Don not stare at operating lamp.  
May be harmful to the eyes.



### CRUSH HAZARD

Be aware of moving parts when  
lifting and mounting the  
floodlight.

## Cable

The floodlight is delivered with a permanently  
fixed 3m 2x1,5mm<sup>2</sup> cable.  
Cable type: H07RN-F OD=8.5-11mm



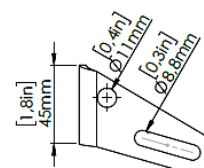
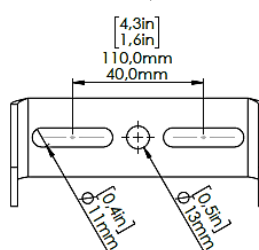
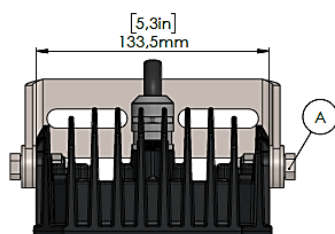
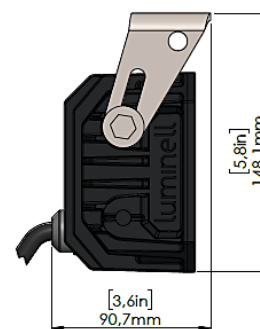
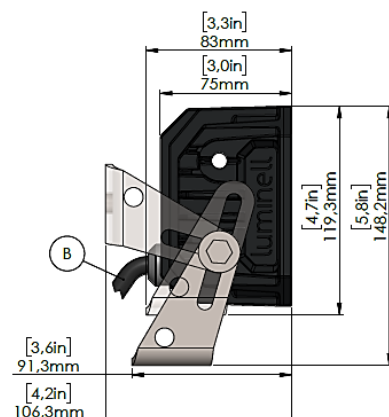
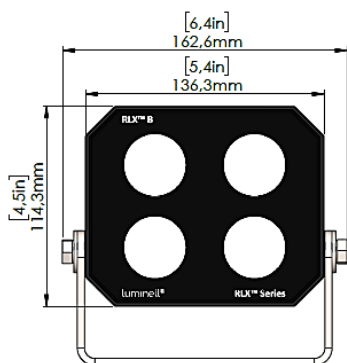
+ POS (brown)  
- NEG (blue)



[www.luminell.com/downloads](http://www.luminell.com/downloads)

The floodlight shall only be installed in a professional and legal manner by qualified personal. The RLX should be opened or dismantled by Luminell personnel only. Warranty will be voided if the product is opened in any way.

See [www.luminell.com/downloads](http://www.luminell.com/downloads) for more information.



A	Bracket fasteners	MATERIAL	QTY.
	8,4 DIN 9021 ISO 7093 A4 Flat washer	AISI316	4
	M8 DIN 985 ISO 7040 A4 Lock nut wNylon insert	AISI316	2
	M8x25 DIN 933 ISO 4017 A4 Hex Cap Screw	AISI316	2

**B** Supplied with 3m 2x1,5mm<sup>2</sup> permanently fixed cable.