

JANECKÝ
STUDIO


MARTIN
JANECKÝ



Martin Janecký (*1980)

After graduation from the Glassworking School in Nový Bor in North Bohemia, he travelled abroad to gain experience in South Africa, Sweden, the Netherlands, and most significantly the USA, where he studied at the Pilchuck Glass School in Washington state under the major artists Richard Royal and William Morris. There, he gained true mastery of the technique “inside sculpting” (shaping the bubble from within while on the blowpipe). Instead of using moulds, these shapes are created literally by hand, out of molten glass right beside the furnace.

Soon after, this ability made him a widely sought-after pedagogue and instructor. As a guest artist, he has been invited to many leading glassworking programs, among them the prestigious Studio of the Corning Museum of Glass, the Pilchuck Glass School, or the Penland School of Crafts in the USA, or the Tojama Institute of Glass Art in Japan. Janecký’s work has been purchased by state and private collections of glass art both domestically and internationally, while his exhibitions have been held in galleries and museums across the globe. In 2019, he created his own glass workshop in Prague – Janecký Studio.



MARTIN JANECKÝ

Janecký's Methods of Working with Hot Glass

“Inside sculpting” (forming the glass bubbles from within while still on the pipe) is Janecký’s main, almost exclusive technique displaying his personal mastery of the craft. The start of the work consists of blowing a sufficiently large bubble with sides of equal thickness. Then it is necessary to open this bubble for internal interventions and thus for shaping from inside with various tools, some specially created for this purpose. The bubble also needs to be kept heated to the right temperature so that the glass does not cool or crack and remains continually workable.

Janecký, though, has in several exceptional instances combined this technique with other forms of working glass still molten from the furnace. He has used modelling of solid glass in several objects (“Hands”, “House Signs”), or sometimes partially employs blowing into plaster moulds for bodies or draperies for larger or more complex figural works, before assembling these segments eventually into a completed whole (Sleepers).

In 2022, Martin Janecký decided to create the two sizeable pieces using the technique of glass casting (Starmen), which unlike blown glass does not place any limitations on the size of the object.





Janecký studio • Malá strana

MARTIN JANECKÝ

Thinkers

Janecký usually focuses on heads and busts, or less often figures or half-figures, both human and animal. In no way are these copies, he always infuses their forms with his original formal vocabulary, yet we sense his pleasure in moving within the historic spaces of ancient cultures, or perhaps more immediately the Baroque-Classical sculptural portraits of a predominantly masculine stamp.







MARTIN JANECKÝ

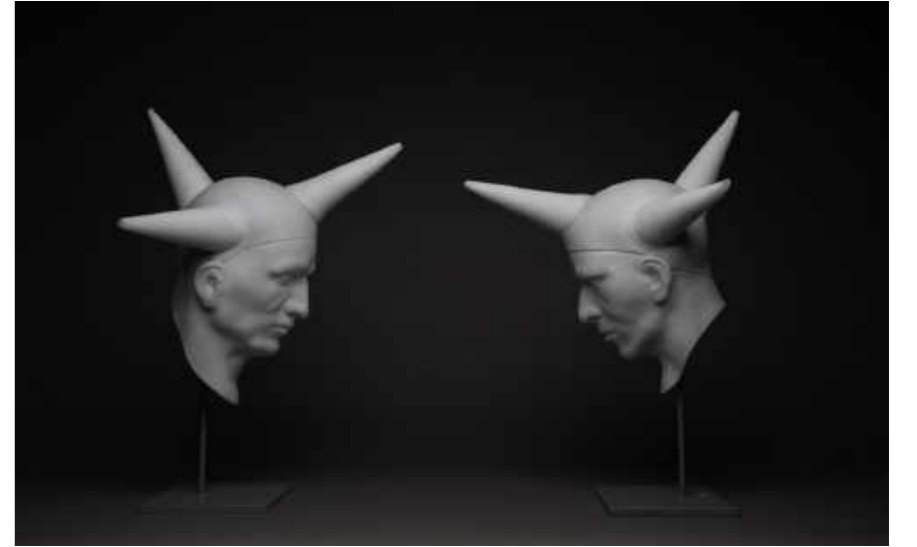
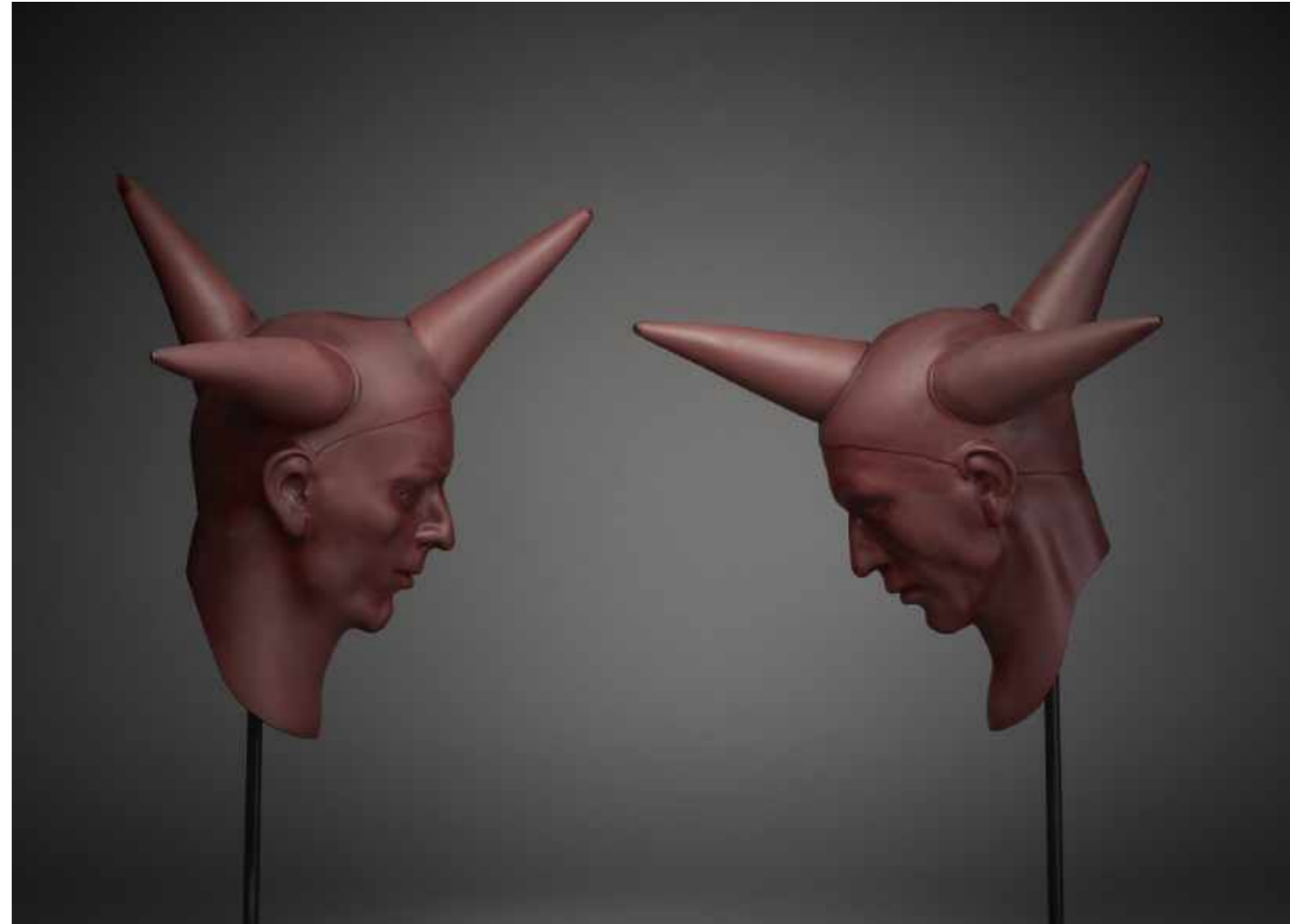
Starmen

"Starmen" became Martin Janecký's subject at a point when he hoped to move further in resolving his work with space, seeing the path in the conjoining of various geometric shapes into the resulting objects. These fictive heads with radiating, shining beams evoking the image of a star received the name "Starmen" – from a free association with the David Bowie song "Starman".





The Museum of Decorative Arts in Prague



MARTIN JANECKÝ

Sleepers

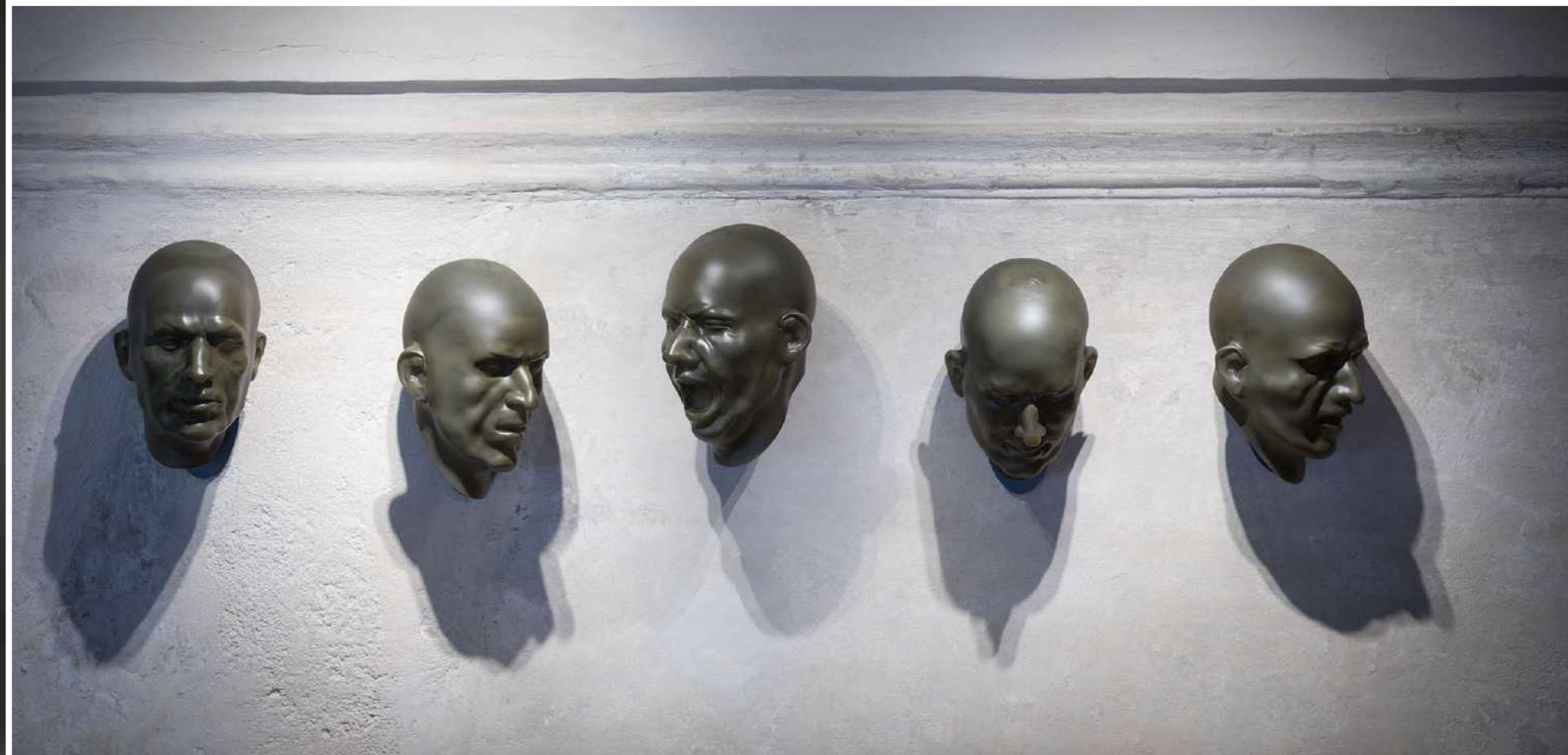


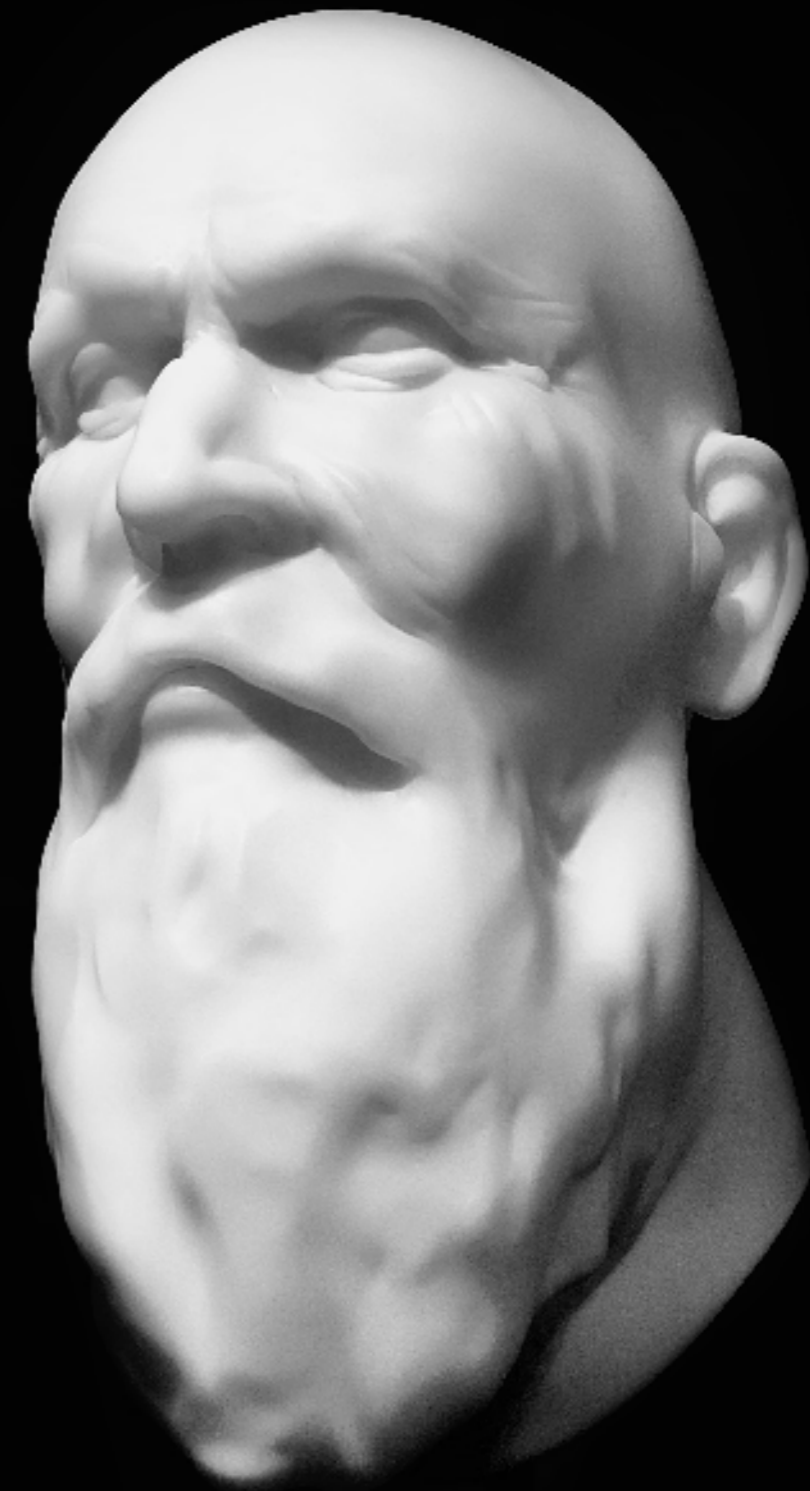


MARTIN JANECKÝ

Other









JANECKÝ STUDIO • 2023



• Lázeňská 485/2
• Malá strana, 118 00 Praha 1

• www.janecký-studio.com
• info@janecky-studio.com

**JANECKÝ
STUDIO**