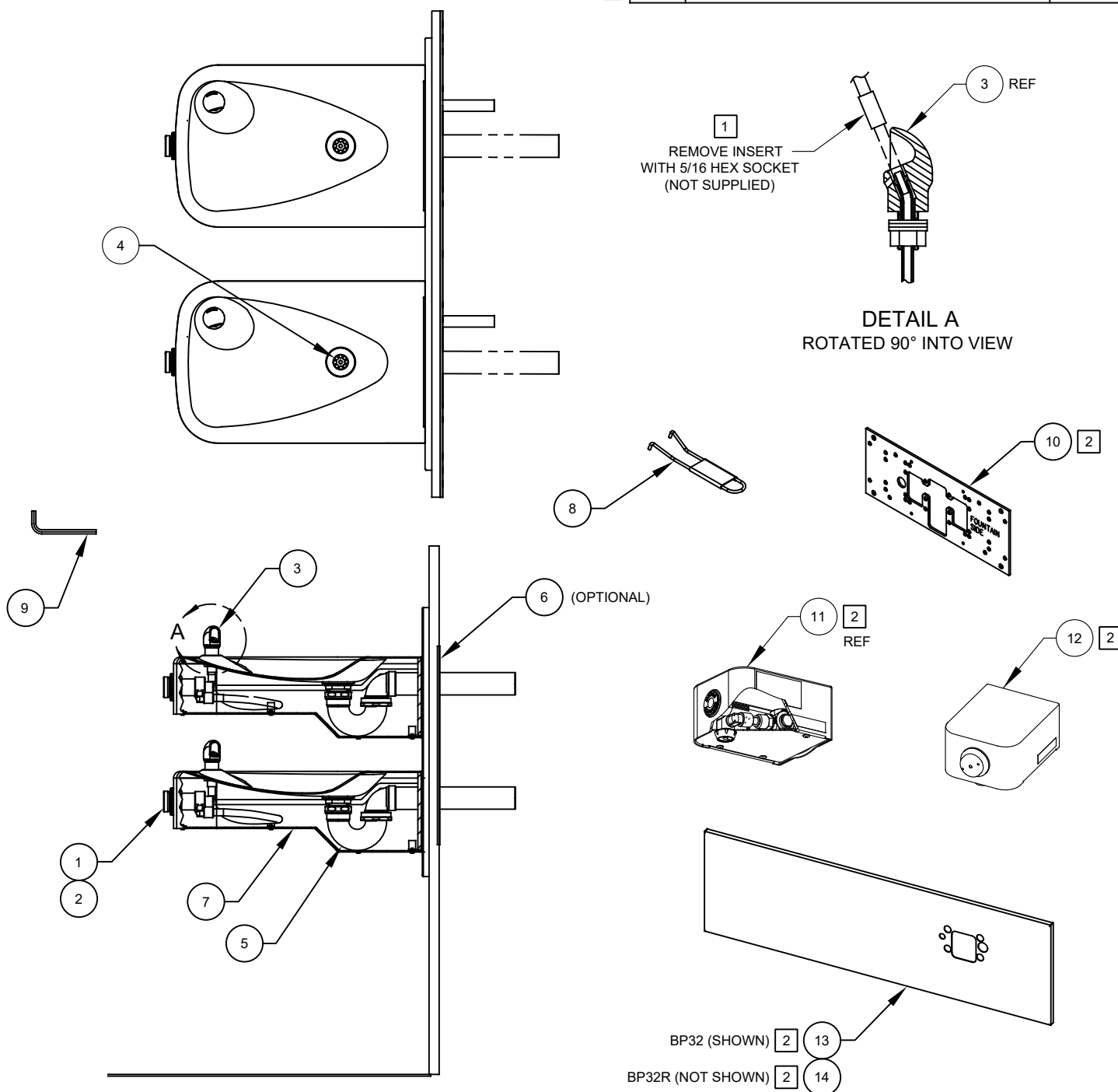


NOTES:

- 1 ENSURE TUBE IS DISCONNECTED FROM PUSH BUTTON VALVE BODY PRIOR TO REMOVAL. APPLY ONE DROP OF LOCTITE 222MS TO NOZZLE THREADS PRIOR TO FASTENING BACK ONTO BUBBLER HEAD. RE-ATTACH TUBE TO VALVE.
- 2 ITEMS 10 THRU 14 ARE OPTIONAL AND CAN BE CONFIGURED TO ADD EITHER A HANDS-OFF (1920HO) OR PUSH BUTTON (1920) BOTTLE FILLER, MOUNTED ON R.H. SIDE OF BACK PANEL (BP32) OR L.H. SIDE (REVERSED) OF BACK PANEL (BP32R) ON DUAL FOUNTAIN MODEL 1117LN.

(OPTIONAL)

ITEM	DESCRIPTION	1117LN
1	VALVE REPAIR KIT	VRK5874
2	PUSH BUTTON ASSY	PBA6
3	BUBBLER HEAD ASSY, PCP	5703M
4	STRAINER, WASTE ASSY	6462
5	TRAP	0005982900
6	PLATE MOUNTING	6700.4
7	PLATE BOTTOM	PBM1107
8	SPANNER WRENCH	0006983506
9	KEY HEX F/PINNED HEX	0002981127
10	PLATE MOUNTING	6700
11	BOTTLE FILLER, HANDS-OFF	1920HO
12	BOTTLE FILLER	1920
13	BACK PANEL FOR 1920 OVER DUAL FOUNTAIN	BP32
14	BACK PANEL BF 32 REVERSED	BP32R



PARTS BREAKDOWN

WHEN ORDERING PARTS PLEASE SPECIFY MODEL NUMBER.

			1455 KLEPPE LANE SPARKS, NEVADA 89431 (775) 359-4712 FAX (775) 359-7424 E-MAIL: HAWS@HAWS.CO.COM WEBSITE: WWW.HAWS.CO.COM		
ECN NO. 5221	REVISED PER ECN: 5744	BY FV	MODEL(S) 1117LN		PART NUMBER 0580000675
DRAWN GC	DATE 08/23/17	CHKD BJM			REVISION 3
APPROVED FV	DATE 10/11/21	SCALE: 1:1	DRAWING TYPE: PARTS BREAKDOWN	SIZE: A	SHEET 1 OF 1