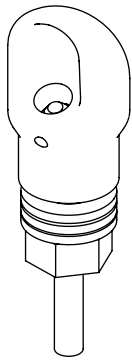
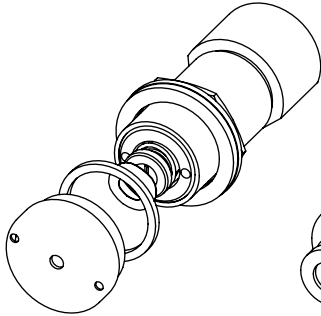


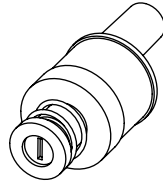
## REPLACEMENT PARTS DRINKING FOUNTAIN



**MODEL 5703M  
BUBBLER HEAD**

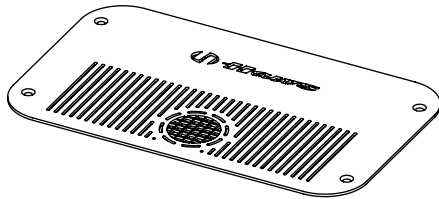


**MODEL 5874PB  
PUSHBUTTON  
(NON FR MODELS)**

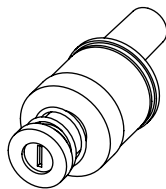


**MODEL VRK5874  
VALVE REPAIR KIT  
(NON FR MODELS)**

## REPLACEMENT PARTS BOTTLE FILLER



**0410000564  
BOTTLE FILLER DRAIN  
COVER PLATE**



**MODEL VRK5874HF  
VALVE REPAIR KIT,  
HIGH FLOW  
(NON FR MODELS)**

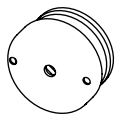


**MODEL VRKNOZ1  
QTY 10 AERATORS  
AND INSTALL TOOL  
(NON FR MODELS)**

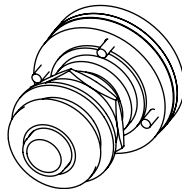


**0110000641  
AERATOR, FR  
(FR MODELS ONLY)**

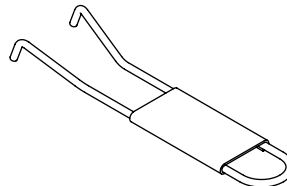
## REPLACEMENT PARTS ALL MODELS



**MODEL PBA7  
BUTTON ASSEMBLY  
(NON FR MODELS)**



**MODEL 5881PBA  
BUTTON ASSEMBLY  
(FR MODELS)**



**0006983506  
SPANNER WRENCH  
(NON FR MODELS)**

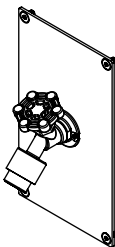


**0510001030  
HEX BIT,  
PINNED, 5/32"**

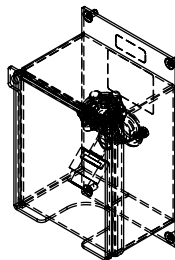


**0510001029  
HEX BIT,  
PINNED, 1/8"**

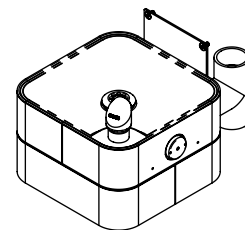
## OPTIONAL ACCESSORIES (FOR NON-FR MODELS ONLY)



**MODEL 3661 HOSE BIB**



**MODEL 3660 LOCKABLE HOSE BIB**



**MODEL 3670 DOG BOWL**

# PARTS BREAKDOWN

WHEN ORDERING PARTS PLEASE SPECIFY PART NUMBER

 <b>Haws®</b>			1455 KLEPPE LANE SPARKS, NEVADA 89431 (775) 359-4712 FAX (775) 359-7424 E-MAIL: HAWS@HAWS.CO.COM WEBSITE: WWW.HAWS.CO.COM			
ECN: 5226	REV. ECN: 5543	BY:	MODEL(S)  MODULAR OUTDOOR FOUNTAIN SYSTEM	PART NUMBER 0510000704		
DRAWN: DHP	DATE: 6/11/20	CHKD: DHP		REVISION 4		
APPROVED: JR	DATE: 07/01/20	SCALE: 1:2		DRAWING TYPE:	PARTS BREAKDOWN	SIZE: A
				SHEET 1 OF 1		