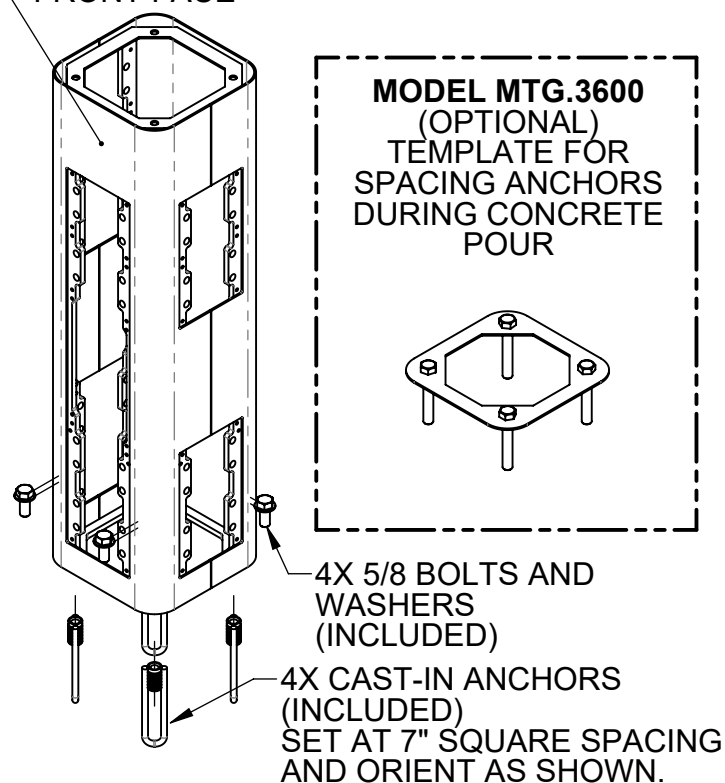
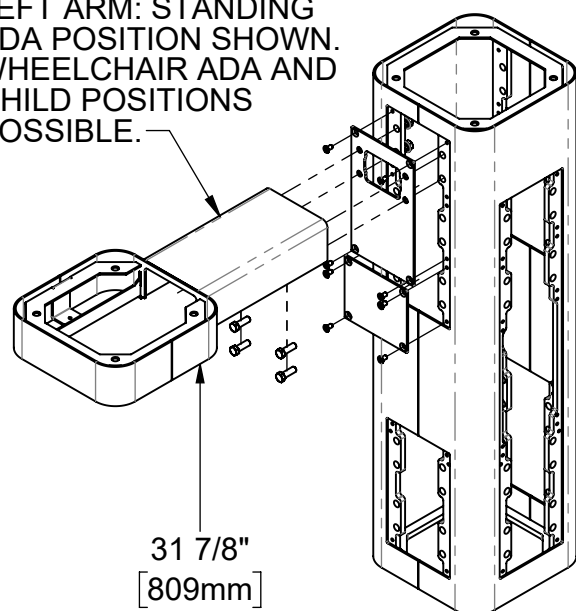


## FRONT FACE

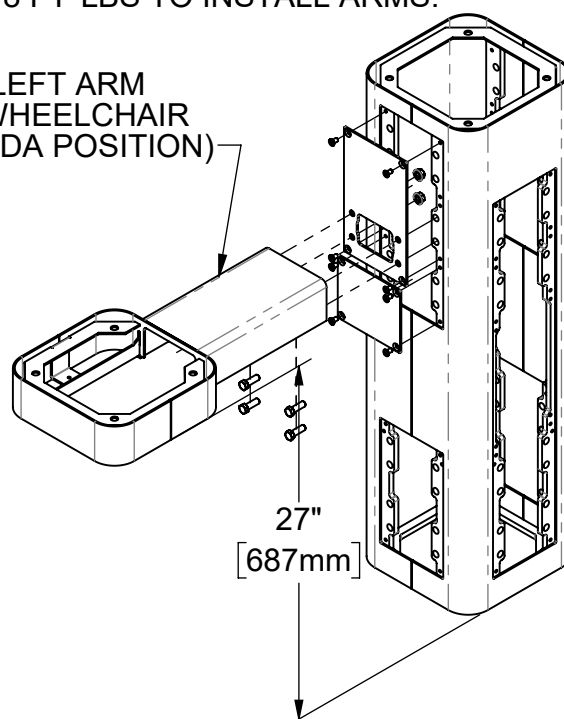


**STEP 1: MOUNT PEDESTAL TO CONCRETE SLAB IN DESIRED ORIENTATION**

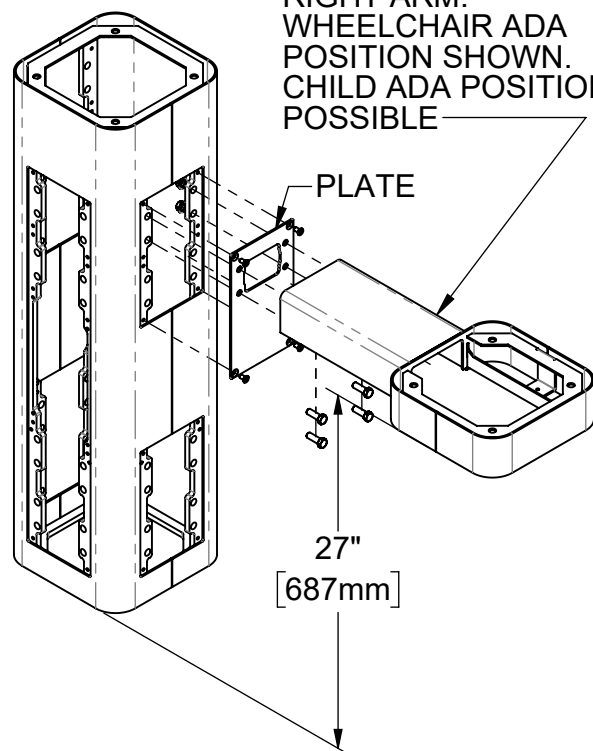
**LEFT ARM: STANDING ADA POSITION SHOWN. WHEELCHAIR ADA AND CHILD POSITIONS POSSIBLE.**



**(LEFT ARM WHEELCHAIR ADA POSITION)**



**RIGHT ARM: WHEELCHAIR ADA POSITION SHOWN. CHILD ADA POSITION POSSIBLE**



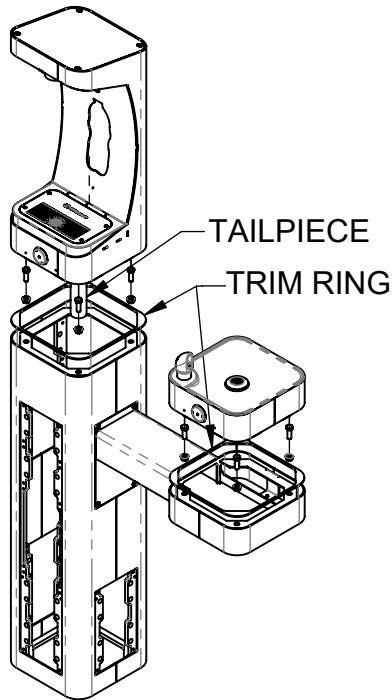
**STEP 2: INSTALL SIDE ARM(S) AND PLATES AS APPLICABLE. ROTATE OR RELOCATE THE PLATES AS REQUIRED TO ESTABLISH DESIRED ARM/BOWL HEIGHT. USE THE 1/4" FLAT HEAD SCREWS TO INSTALL PLATES. USE 3/8" BOLTS AND NUTS AND TORQUE TO 18 FT\*lbs TO INSTALL ARMS.**



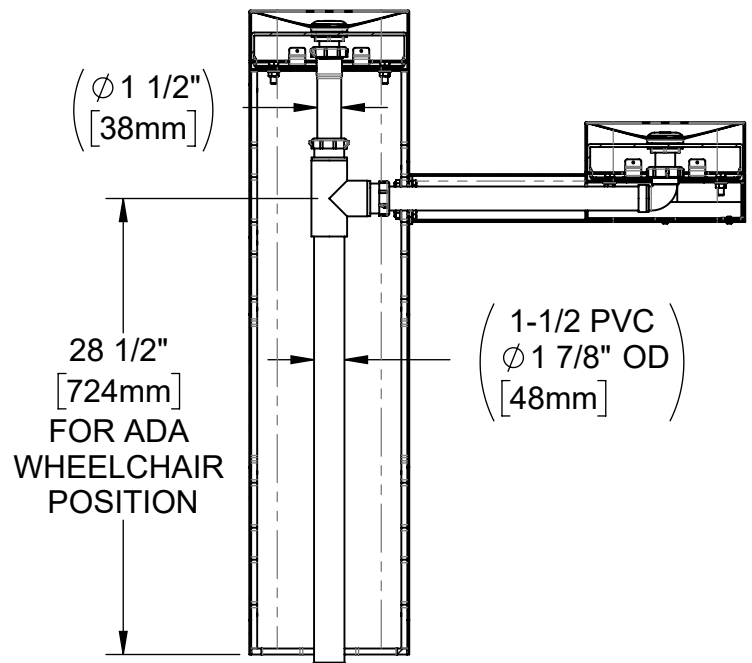
1455 KLEPPE LANE  
SPARKS, NEVADA 89431  
(775) 359-4712 FAX (775) 359-7424  
E-MAIL: HAWS@HAWS.CO.COM  
WEBSITE: WWW.HAWS.CO.COM

|              |                |             |                                       |              |
|--------------|----------------|-------------|---------------------------------------|--------------|
| ECN: 5543    | REV. ECN: 5543 | BY:         | MODEL(S)                              | PART NUMBER  |
| DRAWN: 5543  | DATE: 05/12/20 | CHKD: DHP   | 36XX -MODULAR OUTDOOR FOUNTAIN SYSTEM | 0510000704.D |
| APPROVED: IR | DATE: 07/01/20 | SCALE: 1:12 | DRAWING TYPE: INSTALLATION            | REVISION     |
|              |                |             | SIZE: A                               | 4            |
|              |                |             |                                       | SHEET 1 OF 8 |

WHEN ORDERING PARTS PLEASE SPECIFY PART NUMBER

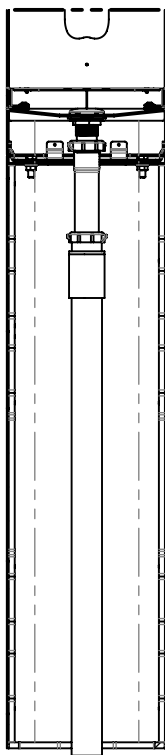


**STEP 3:** MOUNT BOTTLE FILLER AND BOWLS, AS APPLICABLE. ENSURE THAT PARTS ARE CENTERED AND USE INCLUDED TRIM RINGS. USE 3/8" BOLTS AND NUTS AND TORQUE TO 18 FT\*LB'S. INCLUDE APPROPRIATE LENGTH TAILPIECE AT THIS STEP.

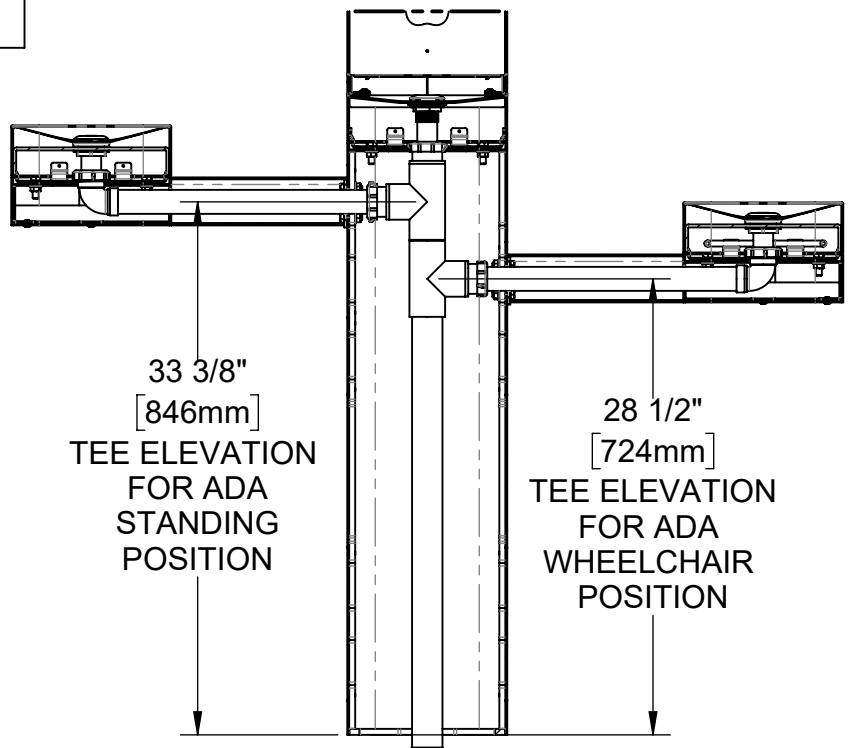


### 3602/3602FR AND 3611/3611FR WASTE PLUMBING

**STEP 4:** INSTALL REMAINING DRAIN COMPONENTS. USE APPROPRIATE PVC CEMENT TO MAKE SOLVENT CEMENT CONNECTIONS. TRIM WASTE BEND AND TAILPIECE LENGTH IF REQUIRED.



### 3610/3610FR WASTE PLUMBING



### 3612/3612FR WASTE PLUMBING

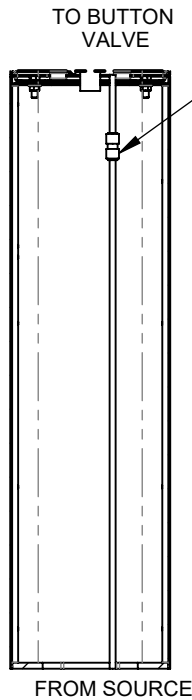


1455 KLEPPE LANE  
SPARKS, NEVADA 89431  
(775) 359-4712 FAX (775) 359-7424  
E-MAIL: HAWS@HAWS.CO.COM  
WEBSITE: WWW.HAWS.CO.COM

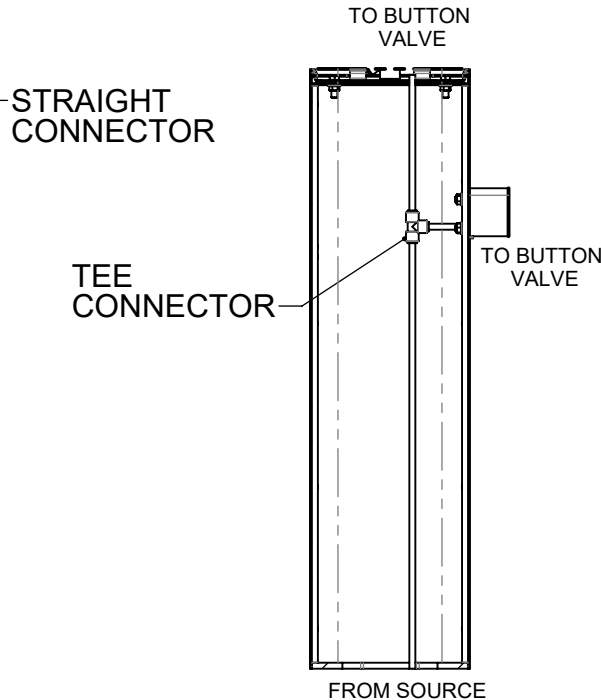
|                            |                   |              |                                                    |                             |
|----------------------------|-------------------|--------------|----------------------------------------------------|-----------------------------|
| ECN:<br>5543               | REV. ECN:<br>5543 | BY:          | MODEL(S)<br>36XX - MODULAR OUTDOOR FOUNTAIN SYSTEM | PART NUMBER<br>0510000704.D |
| DRAWN:<br>IR               | DATE:<br>07/01/20 | CHKD:<br>DHP | SCALE: 1:16                                        | REVISION<br>4               |
| DRAWING TYPE: INSTALLATION |                   |              | SIZE: A                                            | SHEET 2 OF 8                |

WHEN ORDERING PARTS PLEASE SPECIFY PART NUMBER

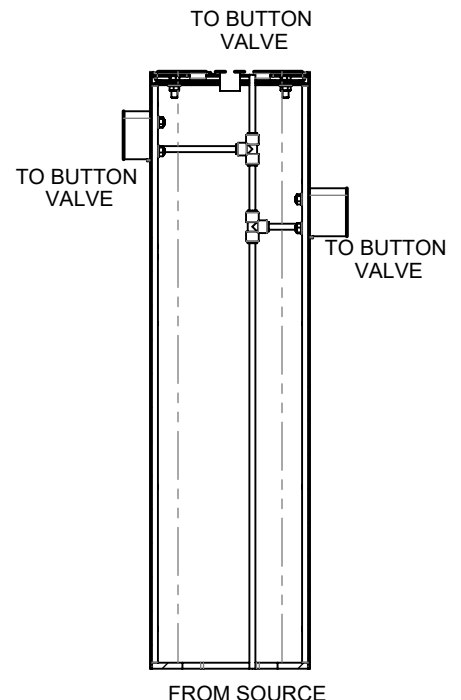
**STEP 5: COMPLETE WATER SUPPLY PLUMBING. NOTE PLUMBING DIFFERENCES BETWEEN FR (FREEZE RESISTANT) AND NON-FR MODELS. REFER TO BURY VALVE OPERATION AND MAINTENANCE MANUAL FOR ADDITIONAL INFORMATION WHEN INSTALLING FREEZE RESISTANT MODELS.**



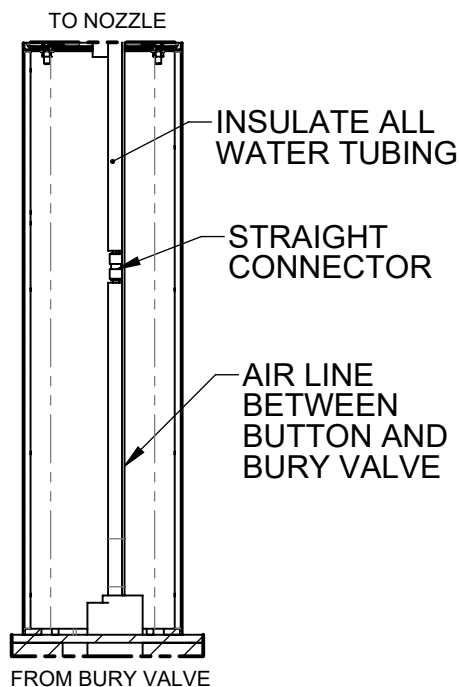
**3610**



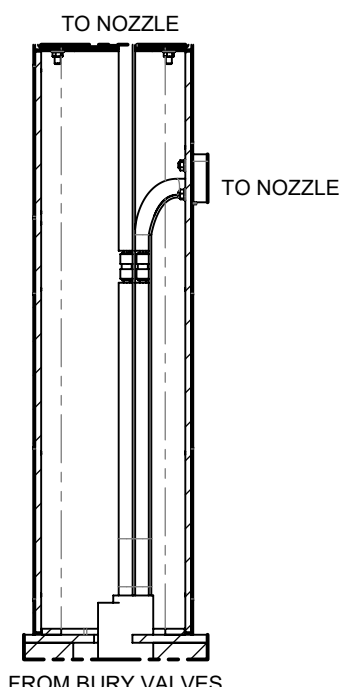
**3602 AND 3611**



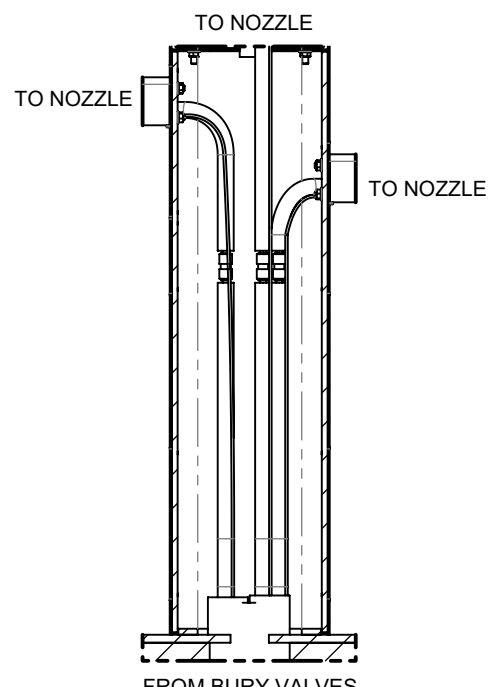
**3612**



**3610FR**



**3602FR AND 3611FR**



**3612FR**

**STEP 6: OPEN SUPPLY VALVE(S) AND TEST. REINSTALL ALL COVER PLATES.**

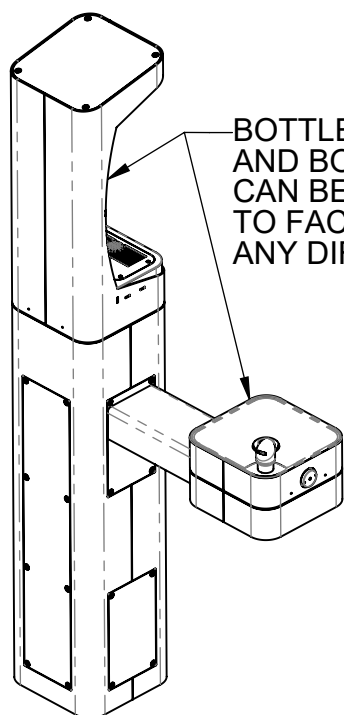


1455 KLEPPE LANE  
SPARKS, NEVADA 89431  
(775) 359-4712 FAX (775) 359-7424  
E-MAIL: HAWS@HAWSO.COM  
WEBSITE: WWW.HAWSO.COM

|           |                |           |                                       |                            |
|-----------|----------------|-----------|---------------------------------------|----------------------------|
| ECN: 5543 | REV. ECN: 5543 | BY:       | MODEL(S)                              | PART NUMBER                |
| DRAWN: IR | DATE: 07/01/20 | CHKD: DHP | 36XX -MODULAR OUTDOOR FOUNTAIN SYSTEM | 0510000704.D               |
|           |                |           |                                       | REVISION                   |
|           |                |           |                                       | 4                          |
|           |                |           | SCALE: 1:32                           | DRAWING TYPE: INSTALLATION |
|           |                |           | SIZE: A                               | SHEET 3 OF 8               |

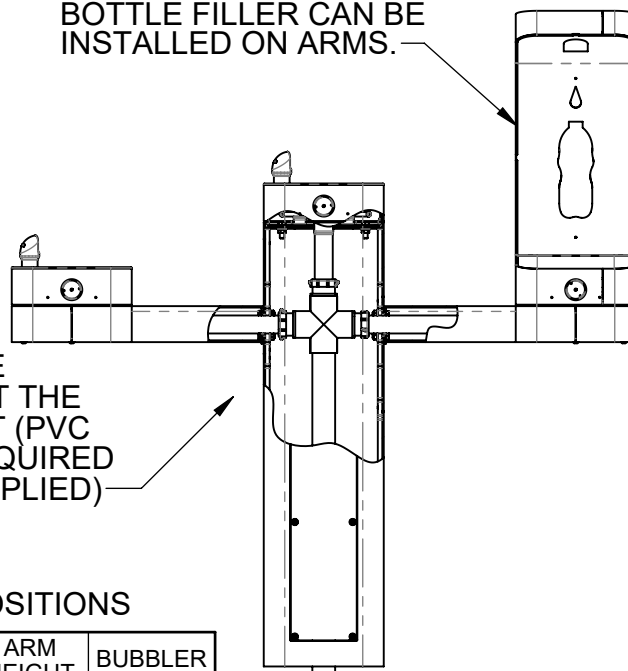
WHEN ORDERING PARTS PLEASE SPECIFY PART NUMBER

**NOTE ON OPTIONAL CONFIGURATIONS:** HAWS 3600 SERIES OUTDOOR FOUNTAINS ARE MODULAR AND CAN BE ASSEMBLED OR RECONFIGURED MANY DIFFERENT WAYS. DISPLAYED HERE ARE JUST SEVERAL EXAMPLES OF WHAT IS POSSIBLE. CONTACT HAWS CUSTOMER SUPPORT IF THERE ARE QUESTIONS ON THE MODULAR CAPABILITY OR FOR SPECIAL MODEL REQUESTS.



BOTTLE FILLER AND BOWLS CAN BE INSTALLED TO FACE ANY DIRECTION.

BOTTLE FILLER CAN BE INSTALLED ON ARMS.



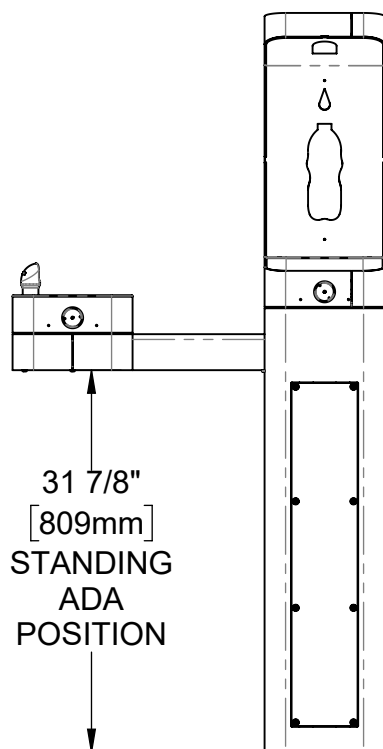
ARMS CAN BE INSTALLED AT THE SAME HEIGHT (PVC CROSS IS REQUIRED BUT NOT SUPPLIED)

### ARM HEIGHT POSITIONS

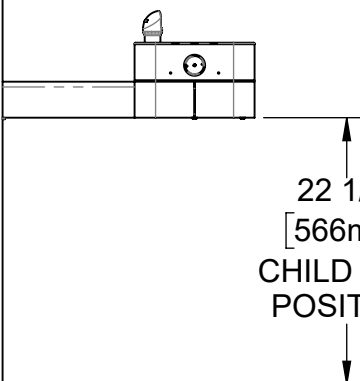
|                | LEFT SIDE* | RIGHT SIDE* | ARM HEIGHT (LOWER EDGE) | BUBBLER NOZZLE HEIGHT |
|----------------|------------|-------------|-------------------------|-----------------------|
| Standing ADA   | Yes (STD)  | No          | 31-7/8 [809 mm]         | 39-3/8 [999 mm]**     |
| Wheelchair ADA | Yes        | Yes (STD)   | 27 [687 mm]             | 34-5/8 [878 mm]       |
| Child ADA      | Yes        | Yes         | 22-1/4 [566 mm]         | 29-7/8 [757 mm]       |

\* RIGHT AND LEFT CAN BE REVERSED IF PEDESTAL IS ROTATED 180°.

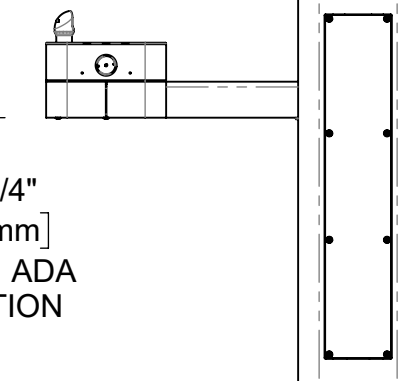
\*\*NOZZLE HEIGHT IS 41-1/2" WHEN BUBBLER/BOWL IS INSTALLED ON PEDESTAL CENTER SUCH AS ON MODEL 3602.



31 7/8"  
[809mm]  
STANDING  
ADA  
POSITION



22 1/4"  
[566mm]  
CHILD ADA  
POSITION



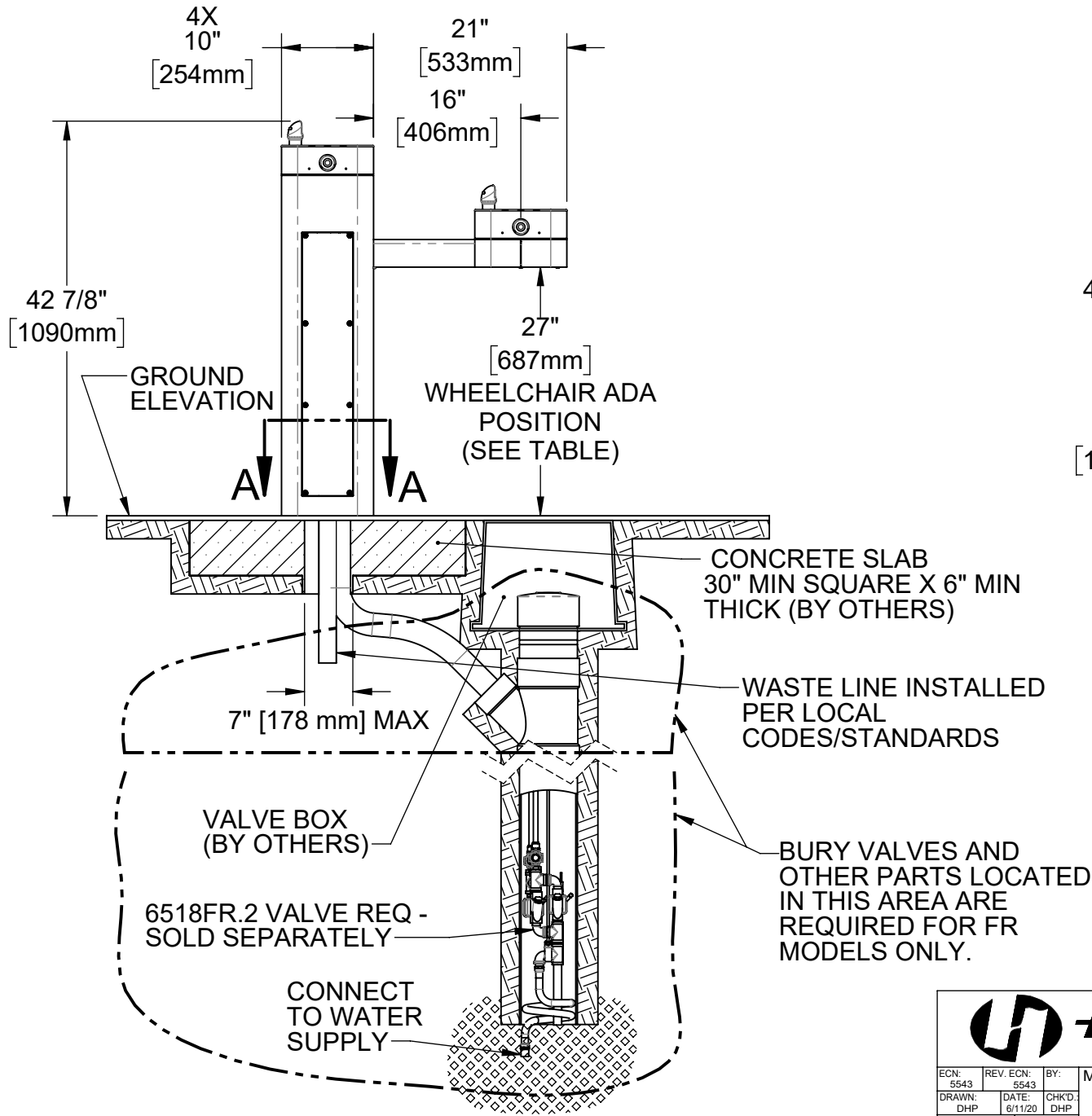
27"  
[687mm]  
WHEELCHAIR  
ADA  
POSITION



1455 KLEPPE LANE  
SPARKS, NEVADA 89431  
(775) 359-4712 FAX (775) 359-7424  
E-MAIL: HAWS@HAWS.CO.COM  
WEBSITE: WWW.HAWS.CO.COM

|              |                |             |                                       |              |
|--------------|----------------|-------------|---------------------------------------|--------------|
| ECN: 5543    | REV. ECN: 5543 | BY:         | MODEL(S)                              | PART NUMBER  |
| DRAWN: 5543  | DATE: 07/01/20 | CHKD: DHP   | 36XX -MODULAR OUTDOOR FOUNTAIN SYSTEM | 0510000704.D |
| APPROVED: IR | DATE: 07/01/20 | SCALE: 1:16 | DRAWING TYPE: INSTALLATION            | REVISION 4   |
|              |                |             | SIZE: A                               | SHEET 4 OF 8 |

WHEN ORDERING PARTS PLEASE SPECIFY PART NUMBER

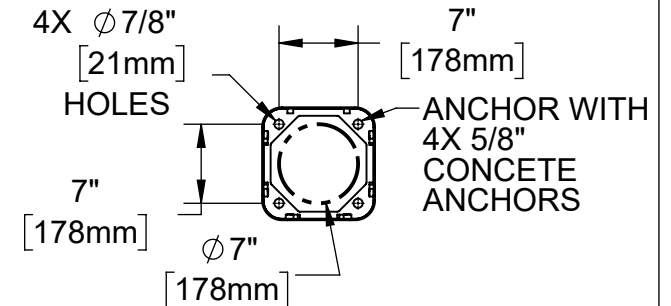


#### ARM HEIGHT POSITION OPTIONS

|                | LEFT SIDE* | RIGHT SIDE* | ARM HEIGHT (LOWER EDGE) | BUBBLER NOZZLE HEIGHT |
|----------------|------------|-------------|-------------------------|-----------------------|
| Standing ADA   | Yes (STD)  | No          | 31-7/8 [809 mm]         | 39-3/8 [999 mm]**     |
| Wheelchair ADA | Yes        | Yes (STD)   | 27 [687 mm]             | 34-5/8 [878 mm]       |
| Child ADA      | Yes        | Yes         | 22-1/4 [566 mm]         | 29-7/8 [757 mm]       |

\* RIGHT AND LEFT CAN BE REVERSED IF PEDESTAL IS ROTATED 180°.

\*\*NOZZLE HEIGHT IS 41-1/2" WHEN BUBBLER/BOWL IS INSTALLED ON PEDESTAL SUCH AS ON MODEL 3602.



PLUMBING MUST FIT WITHIN THIS AREA. CAST CONCRETE AROUND CONDUIT(S).

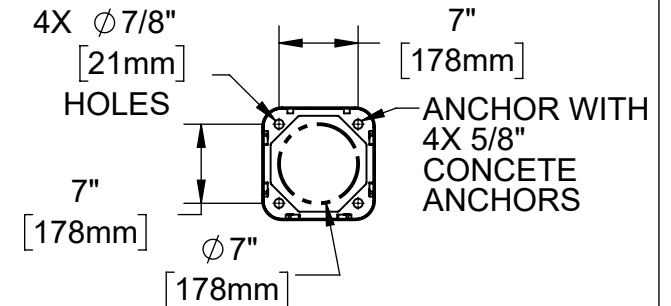
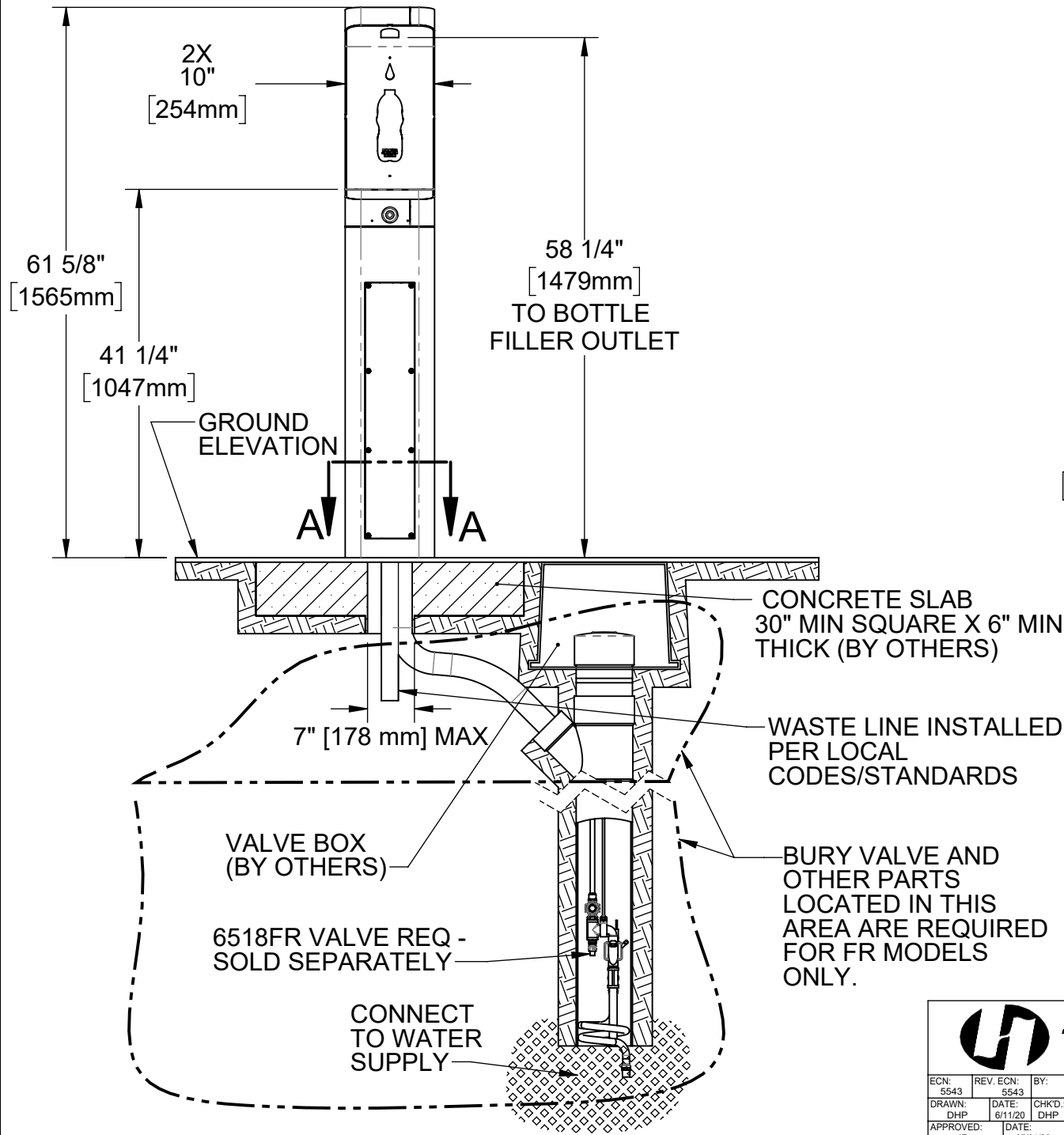
#### SECTION A-A

**NOTE:** INSTALLATION MUST COMPLY WITH LOCAL CODES/STANDARDS, INCLUDING ADA CODES, IF APPLICABLE.



1455 KLEPPE LANE  
SPARKS, NEVADA 89431  
(775) 359-4712 FAX (775) 359-7424  
E-MAIL: HAWS@HAWS.CO.COM  
WEBSITE: WWW.HAWS.CO.COM

|              |                |             |                                                 |                           |
|--------------|----------------|-------------|-------------------------------------------------|---------------------------|
| ECN: 5543    | REV. ECN: 5543 | BY: DHP     | MODEL(S): 36XX -MODULAR OUTDOOR FOUNTAIN SYSTEM | PART NUMBER: 0510000704.D |
| DRAWN: DHP   | DATE: 6/11/20  | CHKD: DHP   |                                                 | REVISION: 4               |
| APPROVED: IR | DATE: 07/01/20 | SCALE: 1:24 | DRAWING TYPE: INSTALLATION                      | SHEET 5 OF 8              |



PLUMBING MUST FIT WITHIN THIS AREA. CAST CONCRETE AROUND CONDUIT(S).

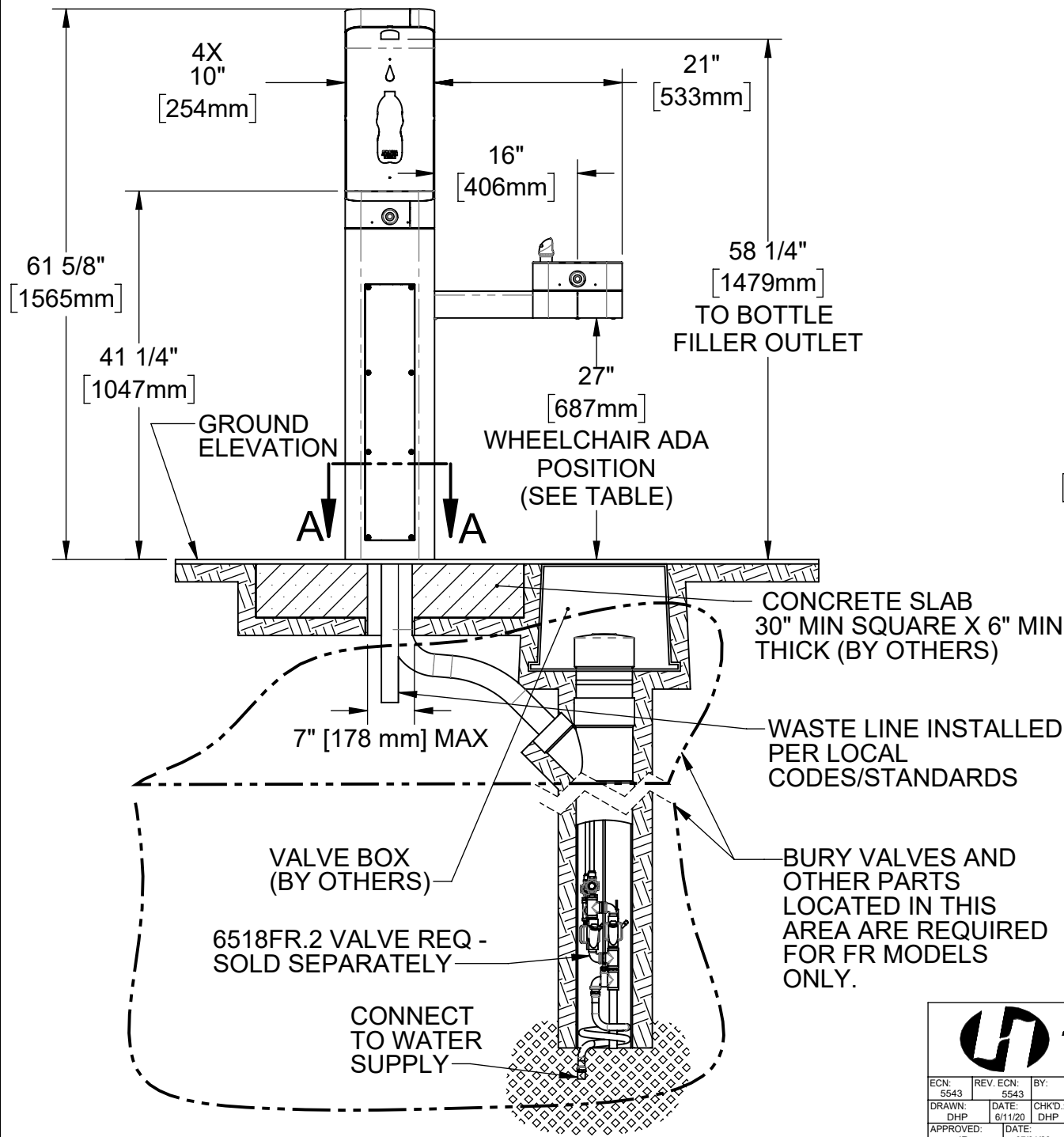
## SECTION A-A

**NOTE:** INSTALLATION MUST COMPLY WITH LOCAL CODES/STANDARDS, INCLUDING ADA CODES, IF APPLICABLE.

|              |  |                |             |                                       |         |              |
|--------------|--|----------------|-------------|---------------------------------------|---------|--------------|
| ECN: 5543    |  | REV. ECN: 5543 | BY:         | MODEL(S)                              |         | PART NUMBER  |
| DRAWN: DHP   |  | DATE: 6/11/20  | CHKD: DHP   | 36XX -MODULAR OUTDOOR FOUNTAIN SYSTEM |         | 0510000704.D |
| APPROVED: IR |  | DATE: 07/01/20 | SCALE: 1:24 | DRAWING TYPE: INSTALLATION            | SIZE: A | REVISION     |
|              |  |                |             |                                       |         | 4            |
|              |  |                |             |                                       |         | SHEET 6 OF 8 |



1455 KLEPPE LANE  
SPARKS, NEVADA 89431  
(775) 359-4712 FAX (775) 359-7424  
E-MAIL: HAWS@HAWS.CO.COM  
WEBSITE: WWW.HAWS.CO.COM

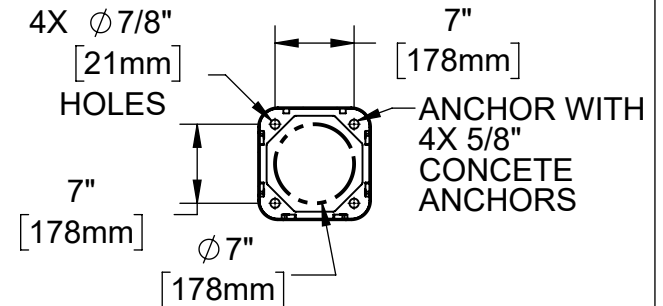


#### ARM HEIGHT POSITION OPTIONS

|                | LEFT SIDE* | RIGHT SIDE* | ARM HEIGHT (LOWER EDGE) | BUBBLER NOZZLE HEIGHT |
|----------------|------------|-------------|-------------------------|-----------------------|
| Standing ADA   | Yes (STD)  | No          | 31-7/8 [809 mm]         | 39-3/8 [999 mm]**     |
| Wheelchair ADA | Yes        | Yes (STD)   | 27 [687 mm]             | 34-5/8 [878 mm]       |
| Child ADA      | Yes        | Yes         | 22-1/4 [566 mm]         | 29-7/8 [757 mm]       |

\* RIGHT AND LEFT CAN BE REVERSED IF PEDESTAL IS ROTATED 180°.

\*\*NOZZLE HEIGHT IS 41-1/2" WHEN BUBBLER/BOWL IS INSTALLED ON PEDESTAL SUCH AS ON MODEL 3602.



PLUMBING MUST FIT WITHIN THIS AREA. CAST CONCRETE AROUND CONDUIT(S).

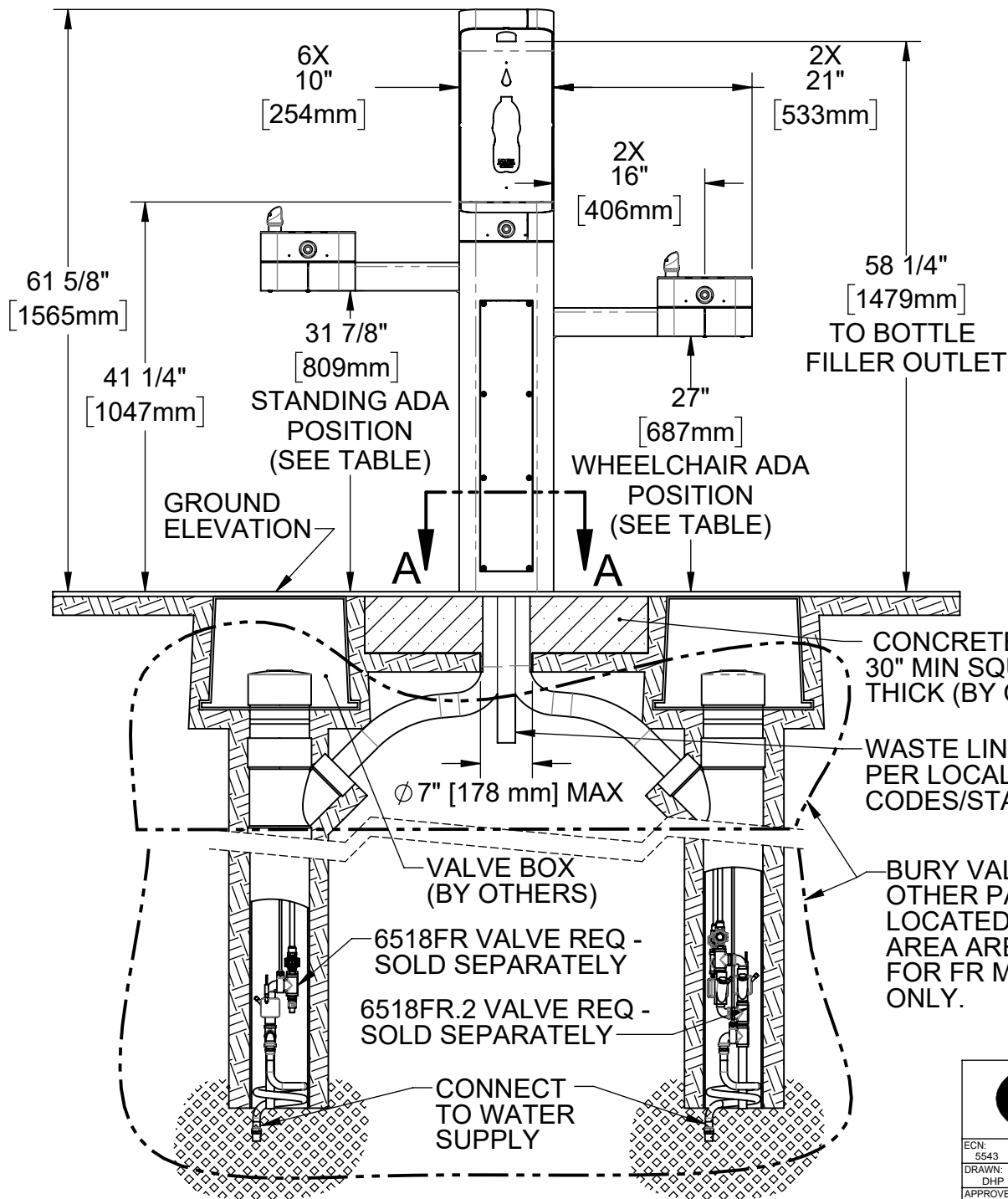
#### SECTION A-A

**NOTE:** INSTALLATION MUST COMPLY WITH LOCAL CODES/STANDARDS, INCLUDING ADA CODES, IF APPLICABLE.



1455 KLEPPE LANE  
SPARKS, NEVADA 89431  
(775) 359-4712 FAX (775) 359-7424  
E-MAIL: HAWS@HAWS.CO.COM  
WEBSITE: WWW.HAWS.CO.COM

|              |                |             |                                                 |                           |
|--------------|----------------|-------------|-------------------------------------------------|---------------------------|
| ECN: 5543    | REV. ECN: 5543 | BY:         | MODEL(S): 36XX -MODULAR OUTDOOR FOUNTAIN SYSTEM | PART NUMBER: 0510000704.D |
| DRAWN: DHP   | DATE: 6/11/20  | CHKD: DHP   |                                                 | REVISION: 4               |
| APPROVED: IR | DATE: 07/01/20 | SCALE: 1:24 | DRAWING TYPE: INSTALLATION                      | SIZE: A SHEET 7 OF 8      |

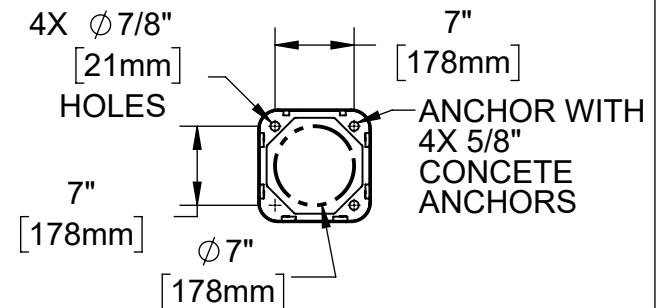


# ARM HEIGHT POSITION OPTIONS

|                | LEFT SIDE* | RIGHT SIDE* | ARM HEIGHT (LOWER EDGE) | BUBBLER NOZZLE HEIGHT |
|----------------|------------|-------------|-------------------------|-----------------------|
| Standing ADA   | Yes (STD)  | No          | 31-7/8 [809 mm]         | 39-3/8 [999 mm]**     |
| Wheelchair ADA | Yes        | Yes (STD)   | 27 [687 mm]             | 34-5/8 [878 mm]       |
| Child ADA      | Yes        | Yes         | 22-1/4 [566 mm]         | 29-7/8 [757 mm]       |

\* RIGHT AND LEFT CAN BE REVERSED IF PEDESTAL IS ROTATED 180°.

\*\*NOZZLE HEIGHT IS 41-1/2" WHEN BUBBLER/BOWL IS INSTALLED ON PEDESTAL SUCH AS ON MODEL 3602.



PLUMBING MUST FIT WITHIN THIS AREA. CAST CONCRETE AROUND CONDUIT(S).

## SECTION A-A

**NOTE:** INSTALLATION MUST COMPLY WITH LOCAL CODES/STANDARDS, INCLUDING ADA CODES, IF APPLICABLE.



1455 KLEPPE LANE  
SPARKS, NEVADA 89431  
(775) 359-4712 FAX (775) 359-7424  
E-MAIL: HAWS@HAWS.CO.COM  
WEBSITE: WWW.HAWS.CO.COM

|              |                |             |                                                 |                           |
|--------------|----------------|-------------|-------------------------------------------------|---------------------------|
| ECN: 5543    | REV. ECN: 5543 | BY: DHP     | MODEL(S): 36XX -MODULAR OUTDOOR FOUNTAIN SYSTEM | PART NUMBER: 0510000704.D |
| DRAWN: DHP   | DATE: 6/11/20  | CHK'D: DHP  |                                                 | REVISION: 4               |
| APPROVED: IR | DATE: 07/01/20 | SCALE: 1:24 | DRAWING TYPE: INSTALLATION                      | SIZE: A SHEET 8 OF 8      |