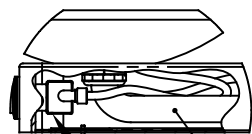
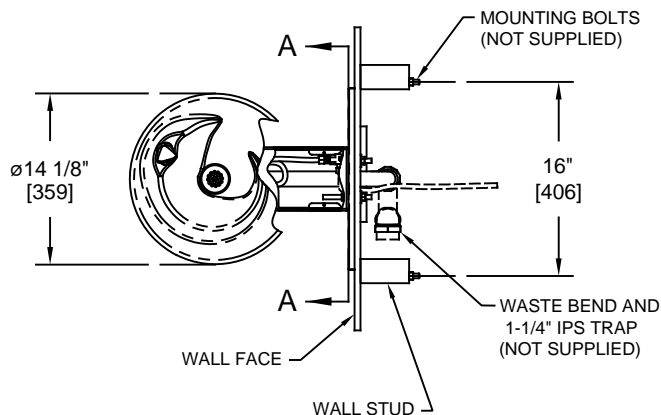


# NOTES:

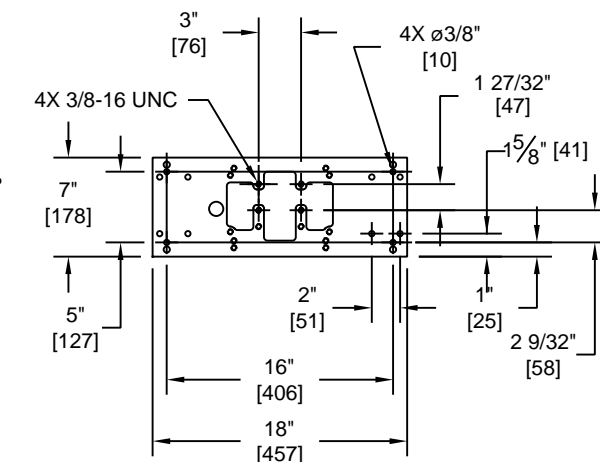
- HOLD ROUGH-IN DIMENSIONS  $\pm 1/8"$  (3.2mm).
- WHEN INSTALLING THIS UNIT, LOCAL, STATE, OR FEDERAL CODES SHOULD BE ADHERED TO FOR INSTALLATION DIMENSIONS (LOCATIONS), WASTE AND SUPPLY REQUIREMENTS OTHER THAN SHOWN.
- INSTALLER MUST PROVIDE TRAP FOR PROPER INSTALLATION.
- REMOVE VALVE FROM PUSH BUTTON TO INSTALL WASTE ELBOW ONTO BOWL. AFTER WASTE ELBOW IS INSTALLED, REINSTALL VALVE AND ADJUST FLOW.
- REFER TO 5874 SERIES OPERATION AND MAINTENANCE MANUAL FOR PUSH BUTTON AND VALVE INSTALLATION/MAINTENANCE INSTRUCTIONS.



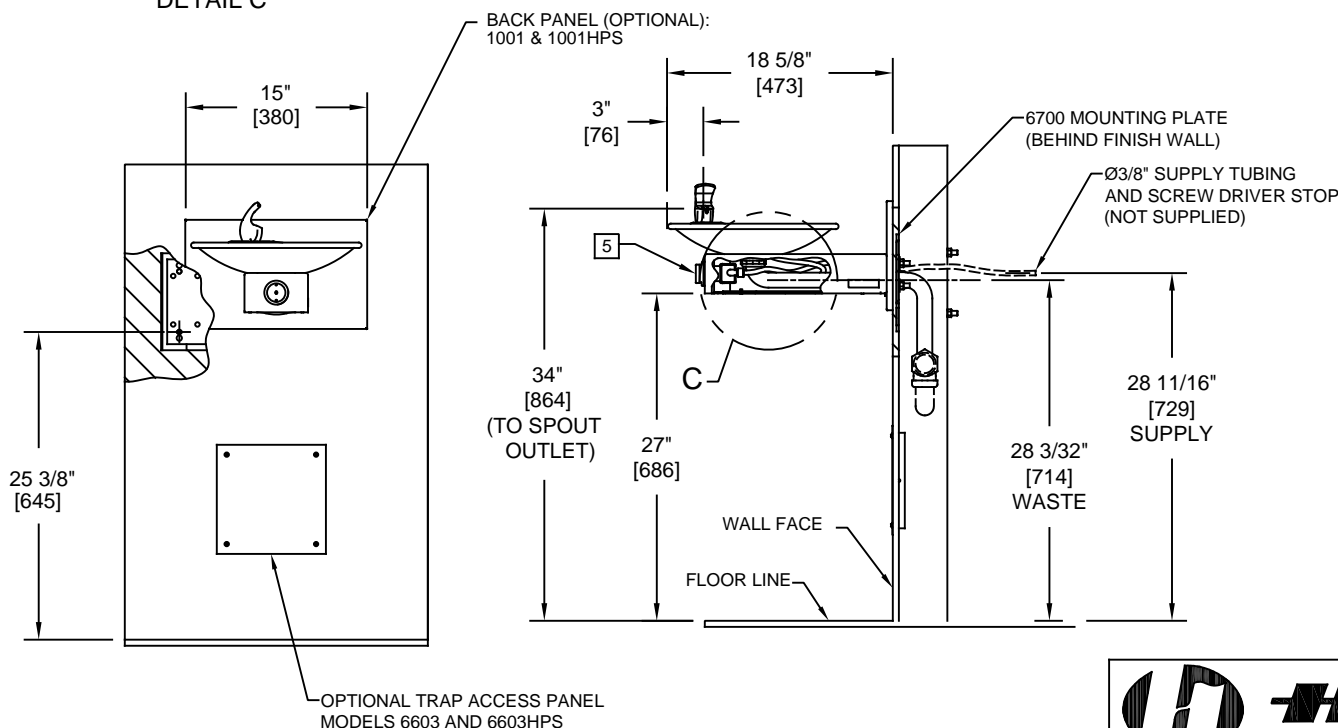
DETAIL C



SECTION A-A  
ROTATED 90° INTO VIEW  
BRACKET MOUNTING  
DETAIL



**6700 MOUNTING PLATE  
MUST BE INSTALLED BEFORE  
FINISH WORK. THIS PLATE IS A  
STANDARD ITEM.**



		1455 KLEPPE LANE SPARKS, NEVADA 89431 (775) 359-4712 FAX (775) 359-7424 E-MAIL: HAWS@HAWS.CO.COM WEBSITE: WWW.HAWS.CO.COM	
ECN NO. REVISED PER BY: ECN: 5438 FV	MODEL(S) 1001/1001HPS DRINKING FOUNTAIN	PART NUMBER 0002076304.D	
DRAWN: RTM DATE: 05/97 CHK'D: DP	APPROVED: IR DATE: 12/09/19	SCALE: 1:1 DRAWING TYPE: INSTALLATION	REVISION 20 SHEET 1 OF 1