

# South Kilworth News

January 2023



Sanford Reservoir – Photo Chris Hubbard

# South Kilworth Directory

Name	Contact details	Description
<b>Allotment Committee</b>	Michael Langman 07811 111854	For the green-fingered aspirants
<b>Bowls Club</b>	Gerry Byrne 01858 575080	gerrypatrickbyrne@gmail.com keithrickhuss@gmail.com
<b>Community Café</b>	Tina Morley 07786496041	Community café held monthly in the village hall - see posters around the village for details
<b>First Saturday Weavers at SK Village Hall</b>	Helen Brotherton 01455554647 helen.brotherton@icloud.com	An informal group of hand weavers who meet on the first Saturday of the month
<b>Kid's football</b>	Brian Robbins 07795105591	On the village hall playing fields
<b>Kilworth Village Facebook page</b>	<a href="https://www.facebook.com/groups/1052827924913620/?ref=share">https://www.facebook.com/groups/1052827924913620/?ref=share</a>	Digital news and more
<b>KOIL</b>	Mark and Sarah: admin@koil-group.com	Group ordering of Oil
<b>Korks (ladies only)</b>	Contact Claire Hubbard 07590254043 to be added to the Korks WhatsApp group	A ladies' social group from the Village meets monthly. Add your name to the mailing list.
<b>Luncheon Club</b>	Rita Hallam 575449	
<b>Lutterworth Library</b>	<a href="http://www.leicestershire.gov.uk/leisure-and-community/libraries/find-a-library/lutterworth-library">www.leicestershire.gov.uk/leisure-and-community/libraries/find-a-library/lutterworth-library</a>	Use the free digital library services to download eBooks, eAudiobooks, eMagazines eNewspapers using a smartphone, tablet, Mac, or PC
<b>Parish Council</b>	Parish Clerk: Karen Brown parishclerk@southkilworth.co.uk	Meet on the second Tuesday of each month at 7:15 pm Chair: Phil Alcock 575978 philalcock@aol.com
<b>SK Security WhatsApp group</b>	Gary Aram 07799894207 Kate Millington 07990504734 Graham Rutter 07721442561	Alerts regarding security issues in the village are posted with a link to Community Police
<b>Skittles Teams</b>	Ray Dorman 07780846002 Tracey 07733235306 (Ladies team)	Games take place at the pub
<b>South Kilworth Art Group</b>	Maggy Roberts 07912031816 and 01858682173 magsroberts@yahoo.co.uk	Thursdays, 9.30 am to 12.00 Midday, Village Hall
<b>South Kilworth Neighbourhood Plan</b>	Contact the Parish Council	Information on the plan: <a href="http://www.harborough.gov.uk/directory_record/2256/south_kilworth_neighbourhood_plan">www.harborough.gov.uk/directory_record/2256/south_kilworth_neighbourhood_plan</a>
<b>South Kilworth News</b>	sknews@southkilworth.co.uk	Community news for the village – contact us with ideas & news.
<b>South Kilworth Village Website</b>	Kevin Coyne: admin@southkilworth.co.uk	southkilworth.co.uk
<b>St Nicholas Church</b>	Sharon March (Minister): 07889 88038 <a href="https://www.avonswift.co.uk/">https://www.avonswift.co.uk/</a> <a href="https://www.facebook.com/avonswiftbenefice">https://www.facebook.com/avonswiftbenefice</a>	Administrator: Karen Morgan: 01858 882032 PCC Secretary Joanna Wilson: 01455 558 372 Email Joanna.wilson17@btinternet.com
<b>Table Tennis</b>	Bob Morley 575832 bobjmorley1953@gmail.com	Thursday at 7 pm in the village hall
<b>Travelling lunch club</b>	Alison Anderton: 0870 240 6993	Lutterworth Age Concern currently has two travelling lunch clubs, travelling to a different pub each month.
<b>Village Email circulation list</b>	southkilworthlist@gmail.com	Send an email to become a member of this list - It is a postbox that doesn't reply! If you send something through for circulation, please put contact details on the email. Email addresses are never shared and cannot be used for commercial purposes.
<b>Village Hall Committee</b>	Chair Mark Tottman: 01858 575157 07990813784	Village Hall bookings contact: Gail on woodgail11@icloud.com or 01858 575064
<b>Women's Institute</b>	Gaye Duncombe Tel 01858 880650 or gduncombe1@gmail.com	3 <sup>rd</sup> Thursday of each month at Belgrave Village Hall, North Kilworth LE17 6EZ at 7.30 p.m.
<b>Youth Club (SKY) (8-16yrs)</b>	Ruth Cross (Youth Projects Coordinator) 07921 847347; Avril Da Silva (Play and Youth Work Leader) 07933899700.	SK Youth club meets in the village hall every Wednesday @ 6:45 pm

## From the Editorial Team

Our very best wishes go to all our readers and their families for 2023! The next edition will be in March 2023 and the deadline for submission of news and articles is 17 February 2023. The SK News is published every other month. The electronic version can be found on the South Kilworth website. Please send news, photos, and articles to [sknews@southkilworth.co.uk](mailto:sknews@southkilworth.co.uk). News that does not coincide with the printed SK News can be uploaded to the South Kilworth website. Links to our advertisers can also be found on the South Kilworth website.



## Focus on James and Nicola Perowne

How does one address a twice knighted, 4-star Admiral, the former Deputy Supreme Allied Commander Atlantic and the most recent Constable and Governor of Windsor Castle?

We were soon to learn the answer as the subject of this conundrum to us is a South Kilworth resident and the focus of our enthusiastic curiosity!

Admiral Sir James Francis Perowne, KCVO (Knight Commander of the Royal Victorian Order), KBE (Knight Commander of the Order of the British Empire) and his wife, Lady Nicola Perowne, have recently returned to their home in South Kilworth from an auspicious term of 'office'.

So, expecting some degree of formality on our visit to their house, we were completely disarmed by the humble, hospitable, warm and friendly welcome we received. It was: "Hi, I am James and this is Nicola". Even with our pressing, it was without titles, at their behest.

James and Nicola have recently returned from Windsor Castle, where James has served as Constable and Governor for the past 8 years until July 2022. In that time, thousands of people have walked past their front



door or underneath the arch of their home at the castle, without knowing it. And imagine having the responsibility of looking after the home of the Queen and ensuring it was well run!

The Constable and Governor of Windsor Castle is in charge of Windsor Castle on behalf of the sovereign. The Constable/Governor receives no salary but has a residence in the Castle.

The position has a long history, having first been instituted in 1086. The posts of Constable and Governor were joined in 1660 and from 1833-1957, the incumbents were members of the Royal Family. Now the position is held by a senior retired officer of the armed forces of the Crown. The reality is that the actual running of Windsor Castle is done in conjunction with a wider group of officials.

James started his career in the Royal Navy in 1965 and by the age of 28, was given command of the submarine HMS Opportune. He had three further sea commands and ended his distinguished Naval career in 2002 as the Deputy Supreme Allied Commander Atlantic, for the North Atlantic Treaty Organisation (NATO). But we spoke mostly about the experiences in the role of Constable/Governor with James and Nicola.

It was in 2014 that James received an e-mail from Vice Admiral Sir Tony Johnstone-Burt, alerting James to the vacancy for the

position of Constable and Governor of Windsor Castle and inviting him to apply for the post. Sir Tony at the time was Master of the Household to the Sovereign. With the support of Nicola, James applied.

The first step in the process for James was an interview at Windsor Castle with the Dean of Windsor, Sir Tony Johnstone-Burt, and 2 other high-ranking household staff. Successfully passing this hurdle, James then received the message: The Queen wants to see you next Thursday!

James asked some questions about the protocols for the meeting and importantly when he would know that the interview is over.... the answer was "you will know when the meeting is at an end when the Queen shuffles her bottom in her chair. You cannot miss it."

Upon being ushered into the Oak Room to meet with HRH Queen Elizabeth II on the appointed day, to his surprise, James also found Prince Philip in attendance. An intimidating final interviewing panel as one could ever imagine!

It turned out to be a warm and empathic meeting. One of the first questions asked by the Queen was: "Have you seen the house?" The Queen was referring to the accommodation reserved for the person taking up the vacant role. James had in fact viewed the prospective residence, which is part of the castle. The Queen then

asked if Nicola had seen the house. She hadn't. The Queen, with a twinkle in her eye, responded, that that was 'very dangerous!' James pointed out that it had only been 5 days since his application for the role, and he had made no presumptions! The Queen then asked if the house was alright. Decorum dictated that James responded that it was perfectly fine. The Queen, not to be put off, persisted, asking whether James thought that Nicola would be happy with the house. James responded that perhaps the kitchen was a little 'tired'. This understated response hid the fact that the kitchen was in great need of renovation and potentially unsafe, seemingly not having been revamped in some time. That was immediately resolved on instruction by the Queen with an extensive refit paid from the Royal Coffers. It is now more than satisfactory. The Queen was a great project manager!

It also emerged that Prince Philip had instantly made a connection - it turned out that he knew James' father from the Dartmouth Britannia Royal Naval College and remembered him kindly. Things were going well.

After about 20 minutes of conversation, James took his cue from the Queen, who appeared to be shuffling in her chair. He rose, bowed and made his way out of the room in the direction he entered. He had been told that The Queen and Duke would remain seated. As he turned at the door to say his final goodbyes, he was surprised to find the Queen and Duke had followed and were right behind him, reaching out to shake his hand. Certainly not on the protocol list but even more positive!



After an anxious wait back in the Oak Room, Tony Johnstone-Burt emerged and gave James the feedback that the meeting had indeed gone well, and that James had been successful. Soon after, James and Nicola temporarily moved from their home in South Kilworth to take up residence in Windsor for the beginning of their 8-year stint.

James and Nicola have many anecdotes and achievements they can tell us about and obviously, some that they can't. But one endearing achievement was being part of the resurrection of pantomimes at Windsor Castle which as we know, were a beloved feature of the youth of the Queen who had acted in three during the Second World War. Three new pantos were performed before the outbreak of the pandemic. James had a walk-on part in each which was always greeted with yells of delight from the audience.

One duty that James particularly enjoyed which happened 7 or 8 times a year on Fridays at Windsor Castle, was the announcing of the names of people to be honoured by the Queen at Investitures. Many luminaries received honours during James' time at the helm but meeting the British astronaut, Tim Peake, was one highlight (and certainly impressed James' grandson who has an interest in space travel). James also added that the knighting of Captain Tom Moore (who raised over £32 million for the NHS by walking 100 laps of his garden before his 100th birthday) was particularly poignant.

During the pandemic, the Queen was in continual residence at Windsor Castle and very kindly opened the private Home Park to the residents at the Castle. The Queen's office overlooks the Home Park where she could see the residents, many of whom were walking their dogs. As one would expect, the Queen knew the dogs as well as their owners and cared for the welfare of both. During these times, Nicola while walking their dog, Lottie, often saw the Queen riding her horse. Nicola recounted that the Queen always had a friendly greeting or a few words to say - even asking after James' knees, which were well known to be giving him some trouble!



James and Nicola last saw the Queen on 19th July 2022 before she went to Balmoral. They were invited as part of a small group of eight guests to a private luncheon in their honour. By this stage, the Queen's health had prevented her from attending some events, but on this occasion, she was in good spirits, shaking hands and greeting her guests in the Oak Room. James also mentioned that the Queen's corgis Candy, Sandy and Muick, were in close attendance, occasionally being nudged out of the way by the Queen. Conversation at the lunch covered many topics, mostly relating to local castle activities, and with jokes aplenty, the Queen's sense of humour well in evidence. The luncheon ended with a cheese board, which even provided treats for the beloved Corgis - each was given a biscuit and cheese from their special jar by Her Majesty.



The Queen and her guests then went back into the Oak Room where James was handed his second knighthood - the Knight Commander of the Royal Victorian Order - personally from the Queen. James explained that when one receives a second knighthood, it does not involve the same ceremony one receives for the first. Nicola was also given a personal gift by the Queen of an enamelled box (with the Queen's personal cypher) with the now very poignant remark, "This is so you do not forget us."

James and Nicola left Windsor on 10 August 2022. With the Queen's passing, it is the end of not only an incredible passage of history but that of the role Windsor Castle has played in the reign of the Queen. What an incredible privilege it must have been for James and Nicola to have been a part of this. James and Nicola have many fond memories relating to their time at Windsor. We look forward to hearing more from them about their remarkable lives and we hope to feature some more excerpts in this publication and on the South Kilworth Website.

**Toni and Rob Snell**

PS: After the Queen died, we wrote an article about our experience in the queue to see the Queen lying in state. We shelved it because of space limitations in the November issue. Speaking to James and Nicola for the above article about the Queen has prompted us to add the précis below.

**Toni Snell**

## The day we bade the Queen farewell

Rob and I arrived in London on the afternoon of Wednesday 14th September 2022 for a long-scheduled Conference on the 15th. Fortuitous, we thought, to be in London while the Queen was lying in state. Originally from Durban, South Africa, but from British stock, the Queen had always been present in our lives.



The last time we had queued for anything significant was in South Africa in 1994 for the first free elections in which citizens of all races were allowed to take part. We agreed that if the Queen's vigil queue was less than 4 hours long, we would join it. The press couldn't be right, surely? 10 hours wait was pure sensationalism, we thought!

Consulting Google Maps, we established that the end of the vigil queue was 'only' 1.7 miles from Westminster. The very least we

would do was to take a walk to look at the queue and absorb the atmosphere. So armed only with light coats, a bottle of water and a small backpack we made our way from our hotel in search of the end of the queue which we found at the Borough Market, alongside the Thames. It was 6pm, the weather deliciously balmy and clear and our fate was sealed - we joined 'The Queue'!

The mood was exhilarating, chatty but solemn, expectant but subdued. In our case, our queue companions were Londoners each with their own story. We shared our story too. It was a lovely evening, the sun low over the Thames, the sky pink and orange. We alternately trotted at pace to keep up with the Queue and then inexplicably slowed to a stop for some time. We passed famous sights and places that we hadn't yet visited:

the Shakespeare's Globe Theatre, The Tate Art Gallery, and the numerous cafés and restaurants with young and old seated outdoors, animated and absorbed by their conversations. Police and security personnel were visible, numerous and helpful along the pathway of the now well-signposted Queue. The Queue itself was a source of great wonder to many passers-by. We were the subject of videos and photos. Then we were told that the access wrist bands we needed were "a little further down the line". It motivated our steps for the next 1.314 km, when we did in fact reach this meaningful milestone.

When we reached the precincts of Westminster at 9pm, we thought, just a little smugly, that we may be back at the Hotel by 10pm! Then it got real. We joined the endless snaking queue in the Victoria Tower Gardens precincts where we oscillated between banks of Porta-loos and the banks of the Thames for the next 5 hours.

Our circle of queue companions grew. Food and memories were shared into the night and we whispered about our aches and pains. All along the way we had been sending photos and commentary back to our various family members who were waiting for us to appear on the TV coverage (we are bottom left in the picture above).

At 2am we reached the airport-style security area just outside the Westminster main entrance. We were 4 people from the front of the queue when we were informed that the naval burial party needed to practice moving the coffin for an hour or so. At least we could sit or lie down on the concrete paving in that area – those in the queue further behind us wouldn't have known what was happening and would have had to stand the whole time. Our queue companions shared clothing with those shivering.

Then the moment arrived. With 9 hours of waiting behind us, our aches evaporated. We quickly sent our final messages to our family, some incredibly still watching with us. At the signal, we walked in. Our eyes wide to catch every detail, we eventually settled our sights on the electrifying vision before us. Since we were the first group allowed back into the hall, we had an uninterrupted view. Her Majesty's decked coffin surrounded by the guards was a magnificent and sombre sight. We paid our respects, bringing with us the prayers of family and friends, conveyed in a moment in time that seemed longer than the replay on the TV later demonstrated. We walked out in silence, exiting towards Big Ben. Then we were confronted by an unexpected and moving sight – hundreds of the soldiers who would be participating in the State Funeral were lined up on parade standing in silence, not moving. With only a handful of us as witnesses, we watched the military personnel then practice - marching, drumming and shouting commands against the backdrop of raised flags in the haunting lighting, barely piercing the surrounding darkness. We could have watched for much longer.

We got back to the hotel at 5am. What an immense privilege, to be part of that historic event.

## Christmas Community Café



There was a great Village turnout for the Christmas Community Café on Tuesday 13<sup>th</sup> December 2022. Father Christmas and his favourite Elf were in attendance to join visitors enjoying the tea, coffee and cakes. The Café team excelled with the decorations, abundance and choice. There were also several stalls open for the sale of sparkly things, chocolates and other Christmas goodies.

Well done to all!





**Next Community café January 10th**

**in the Village Hall 11 - 1pm**

**All welcome for a cuppa and cake**



**Diarise for  
later: 14 Feb  
Café**



[www.nenettechocolates.co.uk](http://www.nenettechocolates.co.uk)

m: 07811 170633

e: [info@nenettechocolates.co.uk](mailto:info@nenettechocolates.co.uk)



Don't try to tell me that you haven't yet eaten all your Christmas chocolates. You need to get on with it fast!

Valentine's Day is just around the corner for which you will need some special, romantic chocolates. All your favourite flavours in heart-shaped chocolate shells presented in beautiful boxes tied with raffia ribbons.

Boxed truffles and hampers make perfect gifts. And I'll even include a special message for you too if you like.

*Nenette*

HAND CRAFTED CHOCOLATES



**NUE HOOPS**

**CREATE YOUR OWN JEWELLERY**

**Go to:**

**<https://nuehoops.com/>**



**Choose your charms**

**Pick your hoops**

**Add charms to your hoops**



**Beautiful and cleverly  
designed jewellery -  
sustainability driven**

**[info@nuehoops.com](mailto:info@nuehoops.com)  
07916416206**

## **Great News!**



Our application to the Community Jubilee Fund for a grant has been successful, so we can now start working on our new all-weather sports arena at the village hall sports field. There has been much interest in this development as we hope to create an informal play area open 24/7 that will allow tennis, five-a-side football, netball, etc. to be played year-round on a fenced all-weather court something like this artist's impression.

At the District Council Grants Meeting on 8th November, our application for a grant of £70,000 for the project was approved. We can now take the development to the next stages: finalising designs and location after consulting with residents and securing Planning Permission. Some of this work has already been started and the tender for construction by next summer has already been advertised to prospective contractors. If you have a question or comment about this project please contact: [parishclerk@southkilworth.co.uk](mailto:parishclerk@southkilworth.co.uk) Regular updates on progress will be provided in SK News and the SK website : [www.SouthKilworth.co.uk](http://www.SouthKilworth.co.uk)

**Parish Council**

# Reaching for the Peak

It was not a good situation. After half a second of mixed but wholly negative emotions, I had come to a stop, twirling at the end of a long rope. There was empty space beneath me, and, below that, 200 feet down, there were lots of sharp rocks. I was shaking with the cold and my fingers were losing feeling. Worst of all, the rock face was out of reach, and anyway I had just fallen off because there weren't enough holds for me. I was too high up to be lowered to the ground. In short, I had the not unfamiliar feeling that the options were limited and most of them didn't end well.

I had started climbing a long time ago, in 1968, on small sandstone cliffs in Sussex, and soon found myself climbing rock faces in North Wales and the Avon Gorge; within the next decade, I had climbed in Cornwall (sea cliffs), Scotland, the Alps and the USA. In the last 40 years, my climbing had been intermittent, but I introduced all my children to the sport and they all climb harder routes now than I ever managed. My daughter was holding me on the rope now.



1

When I began, all climbing in the UK was what is now known as 'trad'. This is where there is no equipment fixed to the rock for safety purposes. Instead, as the leader goes up he or she tries to wedge or jam small pieces of metal into cracks and thread the rope through these (Figure 1). Some routes are easily protected, on others the struggle to place gear can be exhausting or the placements may be hard to spot, and on some (usually the hardest routes, with no cracks) there simply aren't any placements and a slip would be fatal. In the last case, climbers weigh their chances very carefully before embarking. When the leader reaches a resting place (after 100-

150 feet) and has made him or herself secure, they then bring up the second person, who has to remove all the gear (Figure 2). When the second reaches the resting place, one or other leads up the next section, and so on. This is still the major form of climbing in the UK and the USA, and in the major mountain ranges.



2

On the continent, or in quarries in the UK, many routes are protected with permanent bolts, drilled into the rock (e.g., Figure 3). This reduces the hazard, and there is a long-standing debate as to whether the ability to tackle harder routes because they are safer outweighs the loss of the exhilaration of danger. As I get older, the attractions of safety grow. I am always anxious at the foot of a climb anyway: there are gnawing doubts about my ability to get up it, to find the correct route without getting lost in the middle of a rock

face that I can't climb down and where there is no protection, or about whether the weather will stay dry. Sudden rain can leave one marooned on a slippery rock face, unable to move; in the Alps, bad weather is disastrous. Modern forecasting is a boon, but still not wholly reliable.

Thus, it was that in September 2018 we had walked up the valley into the corrie below Dow Crag, in the Lake District, and then up to the crag itself. This is one of the highest cliffs in England, and it catches any wind from the South. We were warm from carrying our heavy sacks up, but even so I had put on extra layers before we started climbing. While I was waiting at the first resting place for the leader to climb the second section, I had started to feel the wind penetrating all my layers. I followed up the second section (figure 4) with cold hands and fingers that were going numb. The third section was the crux. From the resting place, one has to go up about ten feet into a niche, and then move leftwards, across bulging rock for about another ten feet, before resuming vertical progress. By now, we were high on the route. My daughter spent ages moving out



4

of the niche while I, shivering wildly now, was impatient for her to move on. Eventually, she disappeared, and after a while rope tug indicated that it was my turn; I couldn't see or hear her. I found that there was a great hold for two fingers in the niche, but now I could see why Felicity had spent so long on these moves: there were no handholds for the leftwards moves across the overhanging rock. I spent ages groping for dimples, wrinkles, pebbles or



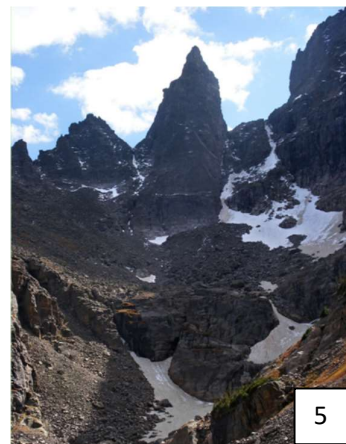
3



anything else to hold myself upright, but nothing emerged: it had to be done by balance only. So, I reluctantly relinquished the hold for my right hand, moved leftwards – and fell.

Desperation lends strength. I realised that the only way to get near the rock was to somehow push the rope behind myself and the rucksack, so that I would be on the rock-wards side of the rope. Wriggling furiously, I managed to achieve this, swing in, and somehow pull urgently on a tiny irregularity on the rock surface and thereby get one hand on a proper hold and my feet back on to the rock. It would have been a damaging fall had I been leading, but as it was I felt chagrin – and warmer, because the struggle had brought feeling back to my fingertips.

That was several years ago. This last year has been a vintage one, with trips to the Peak District, the Wye valley, the Isle of Skye, Northern Italy and Colorado. Skye was a revelation. We did the traverse of the Cuillin Ridge, which involved an overnight bivouac on the ridge crest. The sunshine was unbroken for the two days, and there were no midges, so we revelled in a glorious vista with a blue, glittering sea, and nearby islands far below gleaming like emeralds. Colorado involved some Alpine climbing, where the climb finishes at the top of a peak (e.g., Figure 5). It was wonderful to pull over the last few holds and suddenly find peaks stretching in all directions, as far as the eye could see. These are the moments that lure one on, and in retrospect, the struggle on Dow Crag seems to have been a very small price to pay.



5

If anybody else in SK climbs, I would be delighted to hear from them: Firbank, in Walcote Road. 01858 575395  
Ian Eperon.



**Minuteman Press** Lutterworth  
WE DESIGN, PRINT & PROMOTE...YOUR

- Business stationery
- Wedding stationery
- Menus
- Promotional Items

- Large Format
- Labels
- Invites
- Design Services

*and much more*

---

Offering a hassle-free, cost-effective, single source print solution with free delivery to local businesses

We go over and above usual customer service

We come to you to discuss your personal print requirements

**10% off your first order**

minimum spend applies

**01455 207 508**

lutterworth@minutemanpress.com  
www.lutterworth.minutemanpress.co.uk  
14c High Street | Lutterworth | Leicestershire | LE17 4AD

## DONALD CAMPBELL LANDSCAPES

- ✓ LANDSCAPING
- ✓ FENCING
- ✓ PAVING AND WALLING
- ✓ GARDEN MAINTENANCE

📞 **07817 381 244**



## KILWORTH CARPENTER

**30 Years experience in domestic work, including:**

- Door hanging
- Built in cupboards and wardrobes
- Flooring installation - solid wood and laminate
- Fencing - new, replacement panels and repairs
- Garden structures - sheds, summer houses and pergolas
- General carpentry repairs and alterations
- Painting and decorating
- **No job too small!**









CONTACT NEIL SMITH ON 07835 976998  
or neths62@icloud.com FOR A **FREE QUOTE**

## Albert's Café and Tearoom

*Friendly atmosphere and freshly cooked food*

*All day breakfasts, toasties, jacket potatoes, cakes and more...*



*Open Thursday – Sunday 10 – 3*

*To pre-order, call 07742342772*

**Unit 2, Evergreen  
Fields, Pincet Lane,  
North Kilworth,  
LE17 6NE**



# Bliss & Beauty

The Complete Skincare Specialists



Bliss & Beauty are based in the beautiful village of South Kilworth.

We specialize in treating skin, and offer free consultations to help tackle your skin concerns, whether it's acne, rosacea, or simply the joys of ageing!!! Consultations are very in depth and include the option of a Zoom session or phone call, if preferred. You can call the salon on 01858 571244 and leave a message, or email us on [info@blissandbeauty.co.uk](mailto:info@blissandbeauty.co.uk)

Follow us on Facebook and Instagram and see some of our successes

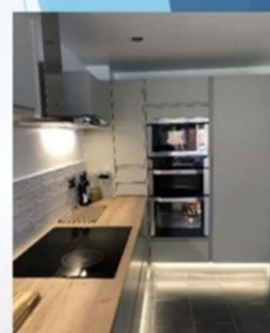
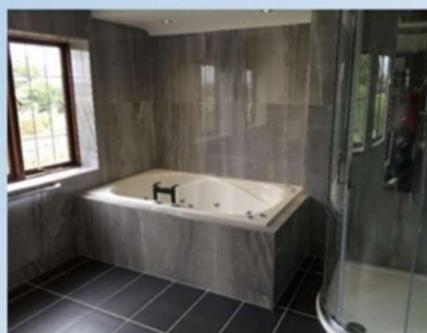


## F & W Plumbing & Heating Services Ltd

Elmcroft Road | North Kilworth | Lutterworth | LE17 6HX

### Bespoke Bathroom & Kitchen Design & Installation

Over 30 years experience in Designing and Installing Contemporary to Traditional Kitchens and Bathrooms



Call Jason for Free Quotation on 07866741261 | Email: [jasonfandw@hotmail.com](mailto:jasonfandw@hotmail.com)  
[www.fandwplumbingandheatingservices.co.uk](http://www.fandwplumbingandheatingservices.co.uk)

"We employed Jason to revamp our hot water system, bath and shower room. The quality of his work and Jason's attention to detail is exceptional. Everything Jason said he would do, he did. He was totally reliable. The whole project was completed on time and on budget. We are delighted with his work and have no hesitation in recommending him."  
Graham and Julie Fish | North Kilworth

"Jason was a great help when we were choosing the fittings for our bathroom and downstairs cloakroom. He started and finished the work in line with the agreed programme dates. The quality of the work carried out was first class and we could not be more pleased with the completed job. We have no hesitation in recommending Jason."  
Phil & Barbara Lawrence | North Kilworth

Plumbing | Joinery | Plastering | Electrical | Decoration | Floor & Wall Tiling  
Gas Safe Reg. No. 75883 | Hot & Cold Water System Upgrades | Boiler Heating System Upgrades  
Project Managed Personally with all Associated Trades coordinated for High Quality Finish.



## Safari Supper - 2022



When we first moved to the village around 14 years ago, we were encouraged to attend a Safari supper. We gave it a go in our first year and it instantly became one of our favourite nights in the village. It's a chance to mingle with old friends, make new ones and enjoy wonderful food in 3 different venues. The unveiling of where you are moving to next is great – along with not knowing who you will be with and what you are going to be eating – this all adds to the evening. This year we were treated to a prawn cocktail, pasta and meatballs, and crème brûlée. The food and hosts were amazing.

COVID-19 changed a lot of things for so many people and we really thought the Safari Supper might fall victim. Thankfully it was only mothballed, and it bounced back in 2022. A massive thanks to all the hosts and fellow attendees who made it such a friendly evening. However, the biggest thanks must go to Vic

Storey for her tenacity in getting Safari Supper back on the village calendar again.

If you haven't tried it – give it a go; it's a great evening and we are already booked in for the next one.

**Chris and Claire Hubbard**



## Safari Supper – Exciting News!



After a two-year break, it was great to be back organising and taking part in the Safari Supper again. Thank you so much to all who came along and took part. We raised £325 through ticket sales. It was lovely to see both new and old faces. Also catching up with friends in the village that we haven't seen since last time!

It would be great to see some more new villagers at the next Safari Supper. It really is a great way of meeting your

neighbours. Throughout the evening you are at each course for around an hour before you move on to the next course and group of people. It's aimed at all ages and cooking abilities! Just simple easy food as the evening is all about meeting people. If you can't seat 8 let me know as we can easily accommodate this in our planning. And as usual, any questions, please feel free to ask.

**SAVE THE DATE - SATURDAY 10TH JUNE 2023**

It has been decided to try a **Summer Safari Supper** too this year. Hoping the warmer weather (fingers crossed), lighter nights and Alfresco eating options will encourage more people to try it out. More details will follow. Thank you.

**Vicky Storey**



## KORKS EVENTS

There was a fantastic turnout for the wreathmaking event in November. Thanks to the organisers for a most enjoyable evening.

**Upcoming Korks Events** - All ladies are welcome to join. You need to join the KORKS WhatsApp group to find out about events. You will be notified at least a month before the event of all the details. You can then sign up for the event if you are interested. If you are not on the KORKS list please WhatsApp Claire on 07590254043 to be added.

January 2023 – Korks late 'Kristmas Kasino and Kocktails Kaper'  
February 2023 – Event planning meeting in the pub



## SK resident wins Wheelchair Tennis National Doubles Title 2022

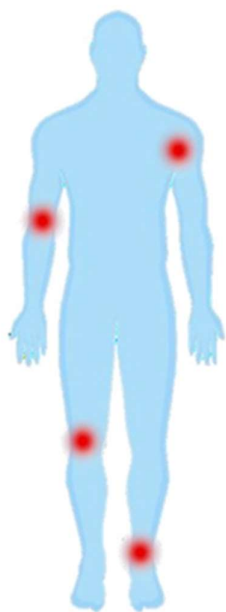
South Kilworth resident, Mark Langeveld, competed in the UK National Wheelchair Tennis Finals held at the Shrewsbury Tennis Club, Shropshire on 1- 4th December. After losing in the singles semi-final, he managed to win his 3rd/4th place play-off match and then went on to win the doubles final to become the National Wheelchair Doubles Champion 2022. Mark competes in National events as well as ITF (International Tennis Federation) tournaments and in 2018 won an ITF Futures Doubles Title, which was held at the Nottingham Tennis Centre.

You may have seen Mark training, practicing or pushing on the local courts. Please feel free to stop and have a chat with Mark, who is also amenable to having a hit with people!

Well done Mark and good luck with your sporting pursuits in 2023! We will catch up with Mark in 2023 for a fuller profile.



### HD Physiotherapy and Sports Injury Practice



**Sophie Davies**  
Chartered Physiotherapist  
MCSP, HCPC Registered

07818 858741 or 07939 234579  
[sophie@hdphysiotherapypractice.co.uk](mailto:sophie@hdphysiotherapypractice.co.uk)  
[www.hdphysiotherapypractice.co.uk](http://www.hdphysiotherapypractice.co.uk)



- ✓ Expert local Physiotherapy assessment, treatment and rehabilitation
- ✓ Treadmill and gym facilities for dynamic assessment
- ✓ COVID Secure
- ✓ Registered with all leading healthcare insurers

### JR Pest Control



Ants | Bed Bugs | Bees | Cockroaches  
Fleas | Mice | Moles | Moths  
Rabbits | Rats | Squirrels | Wasps

**Comprehensive Pest Control Service**  
Residential, Commercial, Industrial & Farms  
Evenings, Weekends & Emergency Callouts  
Investigation, Control & Prevention  
BPCA Qualified & Fully Insured

Tel: 07967 821421  
E-mail: [enquiries@jrpestcontrol.co.uk](mailto:enquiries@jrpestcontrol.co.uk)

### TWO DEAD DISSIDENTS

JAMES MEAKIN



Written by James Meakin (from our village), *Two Dead Dissidents* is a tense yet entertaining story, packed to the brim with unexpected twists and turns. With unusual settings in a unique period of time, this novel is a fresh and enjoyable new take on a well-loved genre. *Two Dead Dissidents* is available on Amazon in paperback for £7.99 and on Kindle for £3.99.

### A.T. BROWN & SON CLEAN CARE SERVICES



PROFESSIONAL CARPET &  
UPHOLSTERY CLEANERS



Telephone: 0116 279 6969  
Mobile: 07442 531 284  
[matt@atbrownandson.co.uk](mailto:matt@atbrownandson.co.uk) [www.atbrownandson.co.uk](http://www.atbrownandson.co.uk)



# JLR BESPOKE PROPERTY RENOVATIONS



JLR Bespoke Property Renovations are an experienced and trusted Project Management and Construction team based in North Kilworth, Leicestershire.

If you have a project or idea in mind, please don't hesitate to contact us either by phone or via our website.  
Tel: 07866 741 261 (Jason Wright)  
[www.jlrbespokeproperties.com](http://www.jlrbespokeproperties.com)



## The Hollies Bed & Breakfast South Kilworth



Host Tim Mills would love to welcome visiting family and friends of South Kilworth residents to his lovely 200-year-old upmarket bed and breakfast guest house and venue. Situated next to the pub, Tim has 6 beautifully appointed smoke-free

guestrooms with all the expected amenities, including a barbecue and a terrace area. He offers a Full English/Irish breakfast daily.



There is no excuse for not having family and friends over for a visit with this home from home location on our doorstep. Please call Tim on 07811 652267 or email: [Mills.Tim3@icloud.com](mailto:Mills.Tim3@icloud.com) to check on availability.





# JOSEPH MORRIS

## *High Class Family Butchers*



### South Kilworth Shop

#### Opening Times

Monday – 7.00 am to 5.30 pm  
Tuesday – 7.00 am to 5.30 pm  
Wednesday – 7.00 am to 5.30 pm  
Thursday – 7.00 am to 5.30 pm  
Friday – 7.00 am to 5.30 pm  
Saturday 7.00 am – 1.00 pm  
Sunday – Closed All Day

Tel: 01858 575210

Email: [shop@joseph-morris.co.uk](mailto:shop@joseph-morris.co.uk)

Web: [www.joseph-morris-butchers.co.uk/](http://www.joseph-morris-butchers.co.uk/)

**We wish all our customers and friends a Happy New Year and all the best for 2023**

### OUR LIVESTOCK

All our livestock is sourced from local farms. This practice not only supports the local farming community but also ensures uniformity of finest quality. Travelling distances are short, minimising stress for the animals – animal welfare being one of our main priorities.





# AVON SWIFT GROUP OF CHURCH JANUARY 2023 SERVICES

Wednesday 4<sup>th</sup> January

7.30 p.m.	Shawell	Compline	Local Team
-----------	---------	----------	------------

8<sup>th</sup> January EPIPHANY 1 **GOLD/WHITE**

Lectionary Page: 33 Isaiah 60. 1 – 6 Ephesians 3. 1 – 12 Matthew 3. 13 – end

8.30 a.m.	Kimcote	Holy Communion (BCP)	Rev. A. Micklethwaite
9.30 a.m.	Swinford	Holy Communion (CW)	Rev. T. Colling
9.30 a.m.	South Kilworth	All Age Service	Beth Rogers
11.00 a.m.	Misterton	Holy Communion (CW)	Rev. T. Colling

15<sup>th</sup> January EPIPHANY 2 **WHITE**

Lectionary Page: 40 Isaiah 49. 1 – 7 1. Corinthians 1. 1 – 9 John 1. 29 – 42

9.30 a.m.	North Kilworth	Holy Communion (CW)	Rev. Canon B. Davis
11.00 a.m.	Peatling Parva	Holy Communion (BCP)	Rev. A. Micklethwaite
4.00 p.m.	Shawell	Holy Communion (CW)	Rev. Canon B. Davis

22<sup>nd</sup> January EPIPHANY 3 **WHITE**

Lectionary Page: 44 Isaiah 9.0 1 – 4 1. Corinthians 1. 10 – 18 Matthew 4. 12 – 23

8.30 a.m.	South Kilworth	Holy Communion (BCP)	Rev. Canon B. Davis
11.00 a.m.	Ashby Magna	Holy Communion (CW)	Rev. D. Hebblewhite

29<sup>TH</sup> JANUARY JOINT BENEFICE SERVICE EPIPHANY 4 **WHITE**

Lectionary Page: 50 1. Kings 17. 8 – 16 1 Corinthians 1. 18 – 31 John 2. 1 – 11

10.30 a.m.	Shawell	Holy Communion (CW/BCP)	Rev. Canon B. Davis
------------	---------	-------------------------	---------------------

Wednesday 1<sup>st</sup> February

7.30 p.m.	Shawell	Compline	Local Team
-----------	---------	----------	------------

Sunday 5<sup>th</sup> February 3<sup>rd</sup> Before Lent

Lectionary P: 58 Isaiah 58 1 – 9a (9b – 12) 1. Corinthians 2. 1 – 12 (13 – 16) Matthew 5. 13 – 20

9.30 a.m.	Stanford on Avon	Holy Communion (CW)	Rev. D. Hebblewhite
11.00 a.m.	Gilmorton	Holy Communion (CW)	Rev. A. Micklethwaite
4.00 p.m.	Peatling Parva	Songs of Praise	Local Team

**Kilworth Accountancy**  
*Experience counts*

An accountancy practice in the village for all your accounting and taxation requirements.

Qualified accountant and tax specialist with over 35 years experience of routine compliance and the delivery of innovative solutions to strategic and taxation problems.

No charge for initial assessment. Why not ask the Accountants in Kilworth?

Email  
martinshave@kilworthaccountancy.co.uk  
Or call  
01858 575481 or 0791 865 1375

**Totally Trees Ltd**

Pruning - Felling - Stump removal

**Tree Surgery**

**01455 554182**

[www.totallytrees.co.uk](http://www.totallytrees.co.uk)  
[info@totallytrees.co.uk](mailto:info@totallytrees.co.uk)

Kindling  
Hardwood logs

ARB Approved Contractor

TRUSTMARK  
Government Endorsed Quality

**BARRY JONES**

**Electrical Contractor**

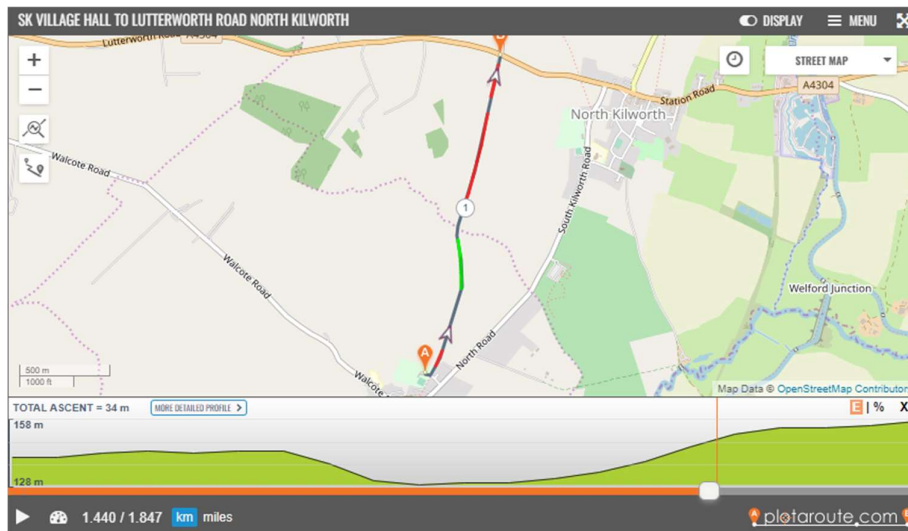
- No job too small
- Free estimates
- Reasonable prices
- All work guaranteed

Stonebridge House, Black Lane  
Shearsby 0116 247 8077  
Mobile 07831 474700

# Walking Route – SK Village Hall to Lutterworth Road, North Kilworth:

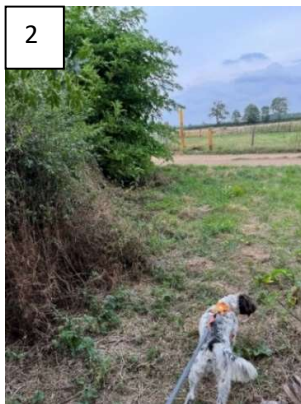
Continuing the series on the walks in and around South Kilworth, this route is one of my favourites, however it is not the best if you have a dog and almost impossible on your own with two. The path is fairly well sign-posted, but you will have to carry dogs and small children over a few stiles and gates, I can just about manage it on my own with Max (pictured below), but any dog bigger than him and I would struggle. If you are walking alone or in a group without dogs, then this is a lovely out and back route of 3.7 km/2.3 miles.

As normal, start from the Village Hall car park and take the 1. footpath to the right of the children's playground.



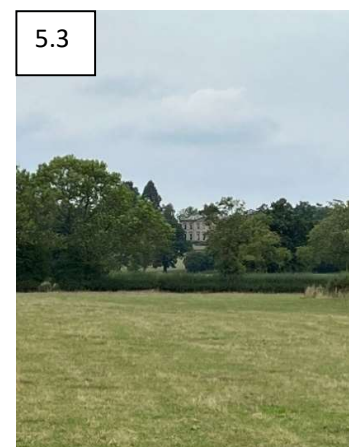
This will take you through a kissing gate and up to the first stile. You go over this stile, 2. across the track and over the next stile into a very small field, often with sheep in.

Over another stile into a larger field, again, often with sheep. 3. Keeping the hedge close to you on your left, continue through this field and over another stile and across the next field, usually occupied



4. There is then another field where you keep the hedge on your left and head north towards the gate on the opposite side.

5. When you go through this field, you turn left slightly and go diagonally across the field and over a barbed wire fence and continue diagonally across the next field where you can see Kilworth House.





6. After you have climbed the next stile, bear right and you will see a little bridge about 100m away. Cross this and continue through the next field, keep the hedge on your right this time. 7. Through, or most likely, over the next couple of gates, and you will enter a more open field. 8. This is the biggest climb of the out section, and you travel across the field to the top and over another little bridge.



9. Once over the bridge you continue along the path and you are back to keeping the hedge on our left as you continue through the field with views to the right of North Kilworth, the football pitches and the tennis courts. 10. After you have come through this field, you reach the busy Lutterworth Road.

I usually turn around and come back the way I have come to complete the out and back, but you can walk along the edge of the road to North Kilworth and loop back to South Kilworth that way. This is a very busy road though, so not the nicest stretch to be walking along, but it is an option if you do not like out and back walks.

I hope you enjoy this one as much as I do and please remember to take any rubbish home and pick up after your dogs so others can continue to enjoy it as well. **Michael Langman**



**Do you want to make a difference in your local community whilst developing your own leadership, planning and financial skills?**

**Why not join the award-winning governance team at Learn Academies Trust by volunteering as a Local Governor at South Kilworth C of E Primary School?**

Local Governors work on behalf of the Trust Board, focusing on:

- Standards, curriculum and school ethos
- Health, safety and premises, including safeguarding
- Parental and wider community engagement
- Assurance and oversight of compliance and risk, including finance



**SCAN ME**

To find out more about governance in Learn-AT schools:

- Go to <https://www.learnat.uk/governance>
- Or email Pippa Darbourne on [pdarbourne@learnat.uk](mailto:pdarbourne@learnat.uk)

To find out more about South Kilworth C of E Primary School go to <https://www.southkilworthprimaryschool.com/>







## Kilworth Springs **PREMIER GOLF CLUB**

Founded in 1993 and overlooking the beautiful Avon Valley in South Leicestershire. Our 18-hole golf course and TrackMan powered driving range are the perfect place to unwind whilst working on your swing.

With a function room available for hire complete with event catering for weddings, special occasions and corporate events. All aspects are open to the public, so whether you are looking for a social game of golf, a drink or bar meal, a premier golfing venue to stage your golf tournament or somewhere to impress for your forthcoming wedding, party, or corporate event – Kilworth Springs Golf Club provides the finest facilities and catering for every occasion.



[www.kilworthsprings.co.uk](http://www.kilworthsprings.co.uk)



**1.0 Confirm Members Present**

Cllr K Coyne - Vice Chairman  
 (Chaired) (KC)

Cllr G Byrne (GB)  
 Cllr T Wood (TW)

Cllr E Derrick (ED)  
 Mrs K Brown (KB) - Clerk

**2.0 To Receive Any Apologies**

Cllr P Allcock - Apologies received and accepted.

**3.0 Disclosure of any Member's Interest/s**

TW expressed an interest in the planning applications 22/01717/FUL and 22/01490/LBC, The Old Rectory, and his intention to abstain from any discussion.

**4.0 To Confirm Other Attendees**

One attendee

**5.0 To Confirm Minutes of Previous Meeting of Council, held on 11<sup>th</sup> October '22**

These minutes were confirmed to be a true record of matters discussed, and decisions reached, by the Parish Council, and duly signed.

**6.0 Public Participation / Correspondence**

6.1 KB reported that Ian Clowes, from LCC Rural Community Recovery, would be unable to attend tonight's meeting, but hoped to attend in December.

6.2 Re playing field overhanging tree branches onto neighbouring parishioner's garden: KB reported that HDC hoped to carry out this work in early Jan'23. Pending.

6.3 Resident's complaint of privacy issues and light obstruction caused by the large Sycamore tree in the children's play area: KB reported that HDC hoped to carry out this work in early Jan'23. Pending.

6.4 Resident's complaint re privacy / noise issues caused by children climbing on the zip wire in the children's play area: KC reported that he had received a quote from contractor for £400, to reposition the play area bordering fence into a position that would provide the neighbour with privacy. PC agreed to accept the quote and have this work carried out. Pending. TW will contact the provider of the zipwire to request that they fit noise reducing grommets to the equipment. Pending.

**7.0 Planning Matters**

**7.1 New Applications:**

22/01717/LBC, The Old Rectory, Rugby Road, SK, to remove bricked up existing opening in boundary wall and replace with half brick. PC agreed no comment.

22/01768/FUL, Koru, North Road, SK. Enclosure of existing porch and installation of a ground floor bay window with mono pitch roof over. PC agreed no comment.

22/01490/FUL, The Old Rectory, Rugby Road, SK. Removal of existing roof lights, reinstatement of three front dormer windows, erection of dormer window to rear elevation. PC agreed no comment.

7.2 Planning Decisions: 22/01688/FUL, South Lodge, Walcote Road, SK: Approved 7<sup>th</sup> Nov'22.

**8.0 Accounts / Finance Matters**

**8.1 The PC approved the following payments:**

Nett	Vat	Total	Details / Comments
39.51	0.92	40.43	Clerk's Exp, mileage and printer ink
885.26	177.05	1,062.31	HDC Grass cutting / bins emptying
937.32	0.00	937.32	Loan Repayment
249.00	0.00	249.00	SKN Printing (Nov'22 Edition)
10.00	0.00	10.00	Clock Memorial Rent Contribution
250.00	0.00	250.00	Clock Winding for 2022
900.00	0.00	900.00	VH Room Hire for Holiday Club summer '22

8.2 KB reported on the cash balances held by the Parish Council at 31/10/22, presenting corresponding bank reconciliation and bank statements. PC approved and chairman signed documents.

8.3 PC discussed the preparation for the forthcoming budget / precept request for the financial year, 2023/2024. Action: KB to prepare and circulate, prior to the next meeting, an estimated forecast for consideration at December's meeting.

8.4 Re CIC re-imbursement of £1430.44, as per the HCYC invoice for youth club services covering the period of Jan to Mar'22: to be carried forward until the return of PA.

8.5 The PC discussed outstanding charges from the Village Hall which have not yet been invoiced. Action: KB to prepare a schedule of outstanding hall charges and forward to the Village Hall committee.

## **9.0 Highways and Footpaths**

- 9.1 Re the Mobile Vehicle Activated Sign (MVAS) to be installed in the village: KB reported that LCC had now approved all paperwork submitted and will notify once they are able to install the poles. PC agreed to accept contractor's quote to fit the camera, and reposition as required, once installed, at a cost of £50 each time. PC agreed that KB should place the order for the camera as per previously agreed quote, £2250 plus vat. Pending.
- 9.2 Re-siting of a village street light on Welford Road, removed by Western Power: KB reported that LCC had scheduled the re-fitting of the street light for Friday, the 4<sup>th</sup> Nov however, the PC had been advised that the work had not been carried out as of the date of the meeting. Action: KB to pursue with LCC.
- 9.3 Walcote Road Bus Shelter - housing of recycling bins: KC reported that he is in the process of obtaining quotes. Action: KC to further investigate options.

## **10.0 Grounds and General Outside Maintenance**

- 10.1 Village Litter Picks: The PC discussed ED's proposal to purchase litter picking equipment. The PC decided to continue borrowing suitable items from HDC and not to purchase at this stage. GB will arrange for any overhanging branches around the playing field, to be trimmed, so that the grass can be cut as close to the edges as possible. This should allow rubbish to be more easily collected from below the hedging.
- 10.2 Reviewing of the current grass cutting contracts with HDC: KB reported that she had not yet received a date from HDC with details of updating the contracts. Action: KB to pursue with HDC.
- 10.3 ED reported that she had been informed of a missing manhole cover in the rear section of the village playing field. Action: TW agreed to have a look at the location asap. KB to forward copies of the Land Registry Title deeds to ED, to confirm ownership of the land.

## **11.0 Recreation**

- 11.1 Regular Play Area Safety Inspections: The PC discussed the items marked for attention on the report. Action: TW to prepare a list of priority items, and obtain a quote for the work to be carried out over the winter.
- 11.2 Future Holiday Club, summer '23: PC discussed the proposal received from Finding Fitness. It was agreed to further discuss at the next meeting.
- 11.3 Youth Club: KB confirmed that she had requested a visit from the youth club providers but a date had not yet been confirmed. Action: KB to contact HCYC.
- 11.4 OPCC (Office of Police and Crime Commissioner) Funding offered to increase positive activities for young people, application deadline 24/10/22: KB reported that, as this fund was aimed at 11-24-year-olds, it would not be an option for the younger age groups concerned either, within the youth club provision, or a summer holiday club. Resolved.

## **12.0 S106 and CIC Funding**

- 12.1 Community feedback re the spending of these funds: Item pending until the PC have an outcome regarding the MUGA proposal.
- 12.2 Proposed plans for the landscaping of Walcote Road corner verges: PC agreed to carry this item forward for further discussion next month. Pending.

## **13.0 South Kilworth News**

- 13.1 KB reported that, pending access to their temporarily 'locked' funds, SKN required further financial support regarding printing costs. The PC agreed to continue to support this valuable community service until the situation is resolved.

## **14.0 Funding for MUGA proposal – Platinum Jubilee '22 and S106**

- 14.1 The PC were informed that the funding applications had been successful. It was agreed that volunteer members of council would liaise regarding the next stages of the project and report back to the PC for consideration and decision making. Action: KB to forward details of the formal contract tendering process to all councillors. Pending.

## **15.0 Remembrance**

- 15.1 The PC agreed not to purchase a Remembrance Wreath this year. Resolved.

## **16.0 Citizen's Advice Bureau**

- 16.1 The PC resolved not to make a donation.

## **17.0 Any Other Business**

- 17.1 GB reported that he had been asked by residents if the PC could help in any way to prevent the upcoming closure of the village pub. Action: KB to contact HDC for advice.
- 17.2 ED asked what the legal retention periods are regarding Parish Council documents. Action: KB to advise.

## **18.0 To Confirm Date of Next Meeting**

Tuesday, 13<sup>th</sup> December'22, 7.15 p.m.

Meeting ended at 22.15 p.m. A copy of these minutes will be published on the South Kilworth Website, no later than thirty days from the date of the meeting.



# ECLECTIC STOVES

Multi-fuel Stoves Installation  
Service & Alterations • Chimney Liners  
Chimney Systems Accessories



Outdoor Ovens & Accessories  
Outdoor Heaters & BBQ's

Tel: 077368 14399 - 07976 177987

Email: [info@eclecticstoves.co.uk](mailto:info@eclecticstoves.co.uk)

Web: [www.eclecticstoves.co.uk](http://www.eclecticstoves.co.uk)



Eclectic, Lodge Farm

Walton Lane, Husbands Bosworth LE17 6NN

Open 9-5 Sat and 9.30-3 Thurs

# STOVES



Multi-fuel Stoves • Installation,  
Service & Alterations • Chimney Liners  
Chimney Systems • Accessories

Tel: 077368 14399 - 07976 177987

Email: [info@eclecticstoves.co.uk](mailto:info@eclecticstoves.co.uk)

Web: [www.eclecticstoves.co.uk](http://www.eclecticstoves.co.uk)

Eclectic, Lodge Farm

Walton Lane, Husbands Bosworth LE17 6NN

Open 9-5 Sat and 9.30-3 Thurs

## South Kilworth School

It has been another wonderful and busy term at South Kilworth Primary School. Since the summer we have welcomed and settled our new Reception children into school, as well as several new families who have joined us across our year groups.



We have celebrated autumn and introduced a new school tradition, Apple Pressing! Thanks to the generosity of the village, we collected sacks of apples, borrowed the community press, and every child in school was given the opportunity to press fresh apple juice. They loved it so much, that they have asked to do it again next year (and the one after) and several have even added presses to their Christmas lists!

The rest of the term has seen music lessons get well underway, including drumming, piano and guitar. The children have performed brilliantly in lots of sporting events, scoring particularly highly in a recent Cross-Country Event, and we continue with our weekly swimming lessons for all our children.

As always, the highlight of this term is the Christmas Nativity – this year performed by our Sapling and Acorn classes. Entitled 'The Angel who nearly missed it all', it was full of lively songs, dance routines and very funny one-liners. The children did exceptionally well. As one parent put it so wonderfully, "It was a pleasure to see all the children shine and make memories as a family".

We'd like to wish all our families and South Kilworth friends a very Merry Christmas and a Happy New Year. We still have a limited number of spaces in our Year 5 & 6 class, and would be delighted to show any families around. If you'd like a prospectus or to book a tour, please do contact the Office via 01858 575 307 or [office@ski.learnat.uk](mailto:office@ski.learnat.uk)



## The Magic of Christmas

There was a feeling of magic in the air, as a cloud of warm anticipation descended over our church, St. Nicholas' on the 9th of December...it was a very frosty Friday evening. But, well wrapped against the elements, and anticipating what was ahead, the audience gathered...full of expectancy for the evening ahead.



The Ladies of the PCC, their helpers, along with one or two Elves (their husbands and partners), had been busy, and the church itself was decked with Holly, the red berries nestled in garlands of ivy. The Christmas tree, topped with a golden star, twinkled with fairy lights, whilst both at the Altar and in the windows, candles, spluttered and waved their cheery flames. Outside, the path was alive with candle light, welcoming all, and even the weather played its part. It was certainly crisp, and yet, as the frost rimmed the shrubs, there were thousands of glittering stars, reflecting back off the moon and candlelight.

Into this magical setting strode the scarlet uniforms of the Salvation

Army, tubas, trombones, trumpets and cornets polished to perfection. And how apt this band, the very epitome of Christmas, who are of course, not only musicians but during the day, on the front line, helping the homeless and disadvantaged, enveloping those poor souls with warmth and compassion. The evening began with the audience rising and joining the band in: 'Oh come all you faithful', and what a triumphant start to proceedings. There followed a mix of the band in full flow (or should that be full blow), with the audience joining in to sing carols. We approached the interval with the band playing a charming, rousing, medley of festive melodies.



At the interval, there was a welcome break, and a dash by all for a warming cup of Mulled Wine, accompanied by a mince pie. Both the wine and pies had been donated by the Lutterworth branch of the Hinckley and Rugby Building Society, so a very big thank you to them.

A brass band offers more depth and versatility than sometimes imagined, and this was amply demonstrated with two particular pieces when the audience had regained their seats. The first had solo parts for all the instruments, from the Tuba to the trombone, the second, a reworking of Ravel's Bolero, bringing to the piece, elements of festive tunes known by all, and was, in its way, the standout piece of the evening. The Salvation Army band is not only blessed with formidable brass players, but they also boast an extremely talented young percussion player, John, and his steady, rhythmic staccato beat on the side drums, held the piece. It was certainly a toe-tapper.



So, combine this wonderful evening of festive music and community singing, along with a better understanding of the work carried out by the Salvation Army, and then all finished off with the audience singing 'Hark the Herald Angels sing', then you might imagine that everyone made their way home, full of good cheer...looking forward to the big day! **Colin Derrick**

## Christmas Table Tennis

On the 1 December, the South Kilworth table tennis group hosted the Welford table tennis club for a fun evening of table tennis and Christmas nibbles and drinks. It was thoroughly enjoyed by all!

The SK Table Tennis group meets every Thursday evening at 7pm in the Village Hall. All abilities are welcome – you do not need to have even played before!

**Bob Morley**





# Winter Birding – what to look out for in December and January

With the first real cold snap appearing over the last few days and snow predicted to be just around the corner I thought it would be interesting to highlight some possible winter visitors that you may come across in your garden or around the village.

## Winter Thrushes

At this time of year, thousands of Redwings and Fieldfare leave their breeding grounds in northern Europe arriving from October onwards. Initially, they can be seen feeding on the berry laden hedgerows but as these are gradually stripped of their fruit, some of the thrushes will feed in gardens. In fact, over the past few days, I have had several of both species feeding on the fallen apples from our two trees which I have deliberately left on the ground. There is often an urge to tidy these up but they are an amazing source of food especially as the hedgerows get emptied of berries and the ground becomes frozen.

Redwing are more like our song thrush in size. The key differences are that they do have a very distinctive creamy / white coloured stripe above the eye and below the cheek and red along the flanks / red under the wing in flight (hence their name). Fieldfare are a much bulkier bird, more like the size of a Mistle Thrush. Greyish head and rump with brown upperparts make these smart thrushes stand out. More often seen in groups that are often very vocal with a distinctive chattering call.

One other thing to note is that you may see an increased number of Blackbirds in your garden. A number of these will have also arrived from the continent, often migrating with the Fieldfare and Redwing.

## Finches

It's not uncommon to get Greenfinch, Goldfinch and Chaffinch in our gardens at this time of the year. If you want to attract finches into your garden, I would recommend Niger seeds or sunflower hearts in your feeders. Away from the commoner species look out for Brambling and Siskin. Brambling can be confused with the Chaffinch but the males have distinctive black and orange in their plumage along with an obvious white rump (see image). Siskin are most often confused with Greenfinch but are much smaller and daintier, the males having a distinctive black cap. If you are unsure of the identification of any of the finches (or other birds visiting your garden) try to get an image and send it across – I will always try to help work out what it is.



## Other species to watch out for

It is quite possible to get other species in the garden especially given our location. I see Nuthatch, Long-tailed Tit, Green Woodpecker, Great Spotted Woodpecker and Coal Tit on a regular basis. At the uncommon end of the scale, you might be lucky enough to attract Yellowhammer, Tree Sparrow, Reed Bunting, Ring-necked Parakeet and Treecreeper at this time of the year. By feeding smaller birds in the garden, you can also bring in birds such as the Sparrowhawk. I have included an image of one perched on my garden feeder having unsuccessfully tried to catch a Blue Tit!



## Will it be a Waxwing Winter?

There has been lots of discussion around whether we are going to have an arrival of Waxwings this winter – as it stands there are several hundred already in northern parts of the UK. They are an irruption species meaning that they move across from the continent in vast numbers if their normal food crop is in short supply or if the weather is very severe in their wintering grounds. If they arrive in the UK they are often seen feeding on rowan, hawthorn and apples. I have included an image of one from Loughborough a few years ago. A very striking bird - plump looking and slightly smaller than a Starling. They have a prominent crest, reddish brown body with a black throat and mask around the eye. They have yellow, white and red markings on the wings and yellow on the end of the tail. They can be seen as singles but often move around in small groups so let me know if you see any.



**Blow away the cobwebs.....**with a winter bird walk around Stanford Reservoir on **Sunday 8<sup>th</sup> January 2023**, meeting at **08.30** at the **Welford Road car park** (you don't need a permit to come along). A good chance to walk off some of the Christmas excesses whilst enjoying the local birdlife at the reservoir. Message me on 07803 374541 or email me at [c.hubbard2@icloud.com](mailto:c.hubbard2@icloud.com) if you would like to come along.

**Chris Hubbard**



## Contact us today

### Positions available

Join the family of Home Instead CareGivers and help make a world of difference.

- ✓ Award winning training
- ✓ Great rates of pay
- ✓ Make a difference to older people's lives
- ✓ Flexible hours

Contact us on: 01455 247100  
[www.homeinstead.co.uk/rugby](http://www.homeinstead.co.uk/rugby)

Each Home Instead Senior Care franchise office is independently owned and operated