

# South Kilworth News

November 2022





# South Kilworth Directory

Name	Contact details	Description
<b>Allotment Committee</b>	Michael Langman 07811 111854	For the green-fingered aspirants
<b>Bowls Club</b>	Gerry Byrne 01858 575080	gerrypatrickbyrne@gmail.com keithrickhuss@gmail.com
<b>Café</b>	Tina Morley 07786496041	Community café held monthly in the village hall - see posters around the village for details
<b>First Saturday Weavers at SK Village Hall</b>	Helen Brotherton 01455554647 helen.brotherton@icloud.com	An informal group of hand weavers who meet on the first Saturday of the month
<b>Kid's football</b>	Brian Robbins 07795105591	On the village hall playing fields
<b>Kilworth Village Facebook page</b>	<a href="https://www.facebook.com/groups/1052827924913620/?ref=share">https://www.facebook.com/groups/1052827924913620/?ref=share</a>	Digital news and more
<b>KOIL</b>	Mark and Sarah: admin@koil-group.com	Group ordering of Oil
<b>Korks (ladies only)</b>	Contact Claire Hubbard 07590254043 to be added to the Korks WhatsApp group	A ladies' social group from the Village meets monthly. Add your name to the mailing list.
<b>Luncheon Club</b>	Rita Hallam 575449	
<b>Lutterworth Library</b>	<a href="http://www.leicestershire.gov.uk/leisure-and-community/libraries/find-a-library/lutterworth-library">www.leicestershire.gov.uk/leisure-and-community/libraries/find-a-library/lutterworth-library</a>	Use the free digital library services to download eBooks, eAudiobooks, eMagazines eNewspapers using a smartphone, tablet, Mac, or PC
<b>Parish Council</b>	Parish Clerk: Karen Brown parishclerk@southkilworth.co.uk	Meet on the second Tuesday of each month at 7:15 pm Chair: Phil Alcock 575978 philalcock@aol.com
<b>SK Security WhatsApp group</b>	Gary Aram 07799894207 Kate Millington 07990504734 Graham Rutter 07721442561	Alerts regarding security issues in the village are posted with a link to Community Police
<b>Skittles Teams</b>	Ray Dorman 07780846002 Tracey 07733235306 (Ladies team)	Games take place at the pub
<b>South Kilworth Art Group</b>	Maggy Roberts 07912031816 and 01858682173 magsroberts@yahoo.co.uk	Thursdays, 9.30 am to 12.00 Midday, Village Hall
<b>South Kilworth Neighbourhood Plan</b>	Contact the Parish Council	Information on the plan: <a href="http://www.harborough.gov.uk/directory_record/2256/south_kilworth_neighbourhood_plan">www.harborough.gov.uk/directory_record/2256/south_kilworth_neighbourhood_plan</a>
<b>South Kilworth News</b>	sknews@southkilworth.co.uk	Community news for the village – contact us with ideas & news.
<b>South Kilworth Village Website</b>	Kevin Coyne: admin@southkilworth.co.uk	southkilworth.co.uk
<b>St Nicholas Church</b>	Sharon March (Minister): 07889 88038 <a href="https://www.avonswift.co.uk/">https://www.avonswift.co.uk/</a> <a href="https://www.facebook.com/avonswiftbenefice">https://www.facebook.com/avonswiftbenefice</a>	Administrator: Karen Morgan: 01858 882032 PCC Secretary Joanna Wilson: 01455 558 372 Email Joanna.wilson17@btinternet.com
<b>Table Tennis</b>	Bob Morley 575832 bobjmorley1953@gmail.com	Thursday at 7 pm in the village hall
<b>Travelling lunch club</b>	Alison Anderton: 0870 240 6993	Lutterworth Age Concern currently has two travelling lunch clubs, travelling to a different pub each month.
<b>Village Email circulation list</b>	southkilworthlist@gmail.com	Send an email to become a member of this list - It is a postbox that doesn't reply! If you send something through for circulation, please put contact details on the email. Email addresses are never shared and cannot be used for commercial purposes.
<b>Village Hall Committee</b>	Chair Mark Tottman: 01858 575157 07990813784	Village Hall bookings contact: Gail on woodgail11@icloud.com or 01858 575064
<b>Women's Institute</b>	Gaye Duncombe Tel 01858 880650 or gduncombe1@gmail.com	3 <sup>rd</sup> Thursday of each month at Belgrave Village Hall, North Kilworth LE17 6EZ at 7. 30 p.m.
<b>Youth Club (SKY) (8-16yrs)</b>	Ruth Cross (Youth Projects Coordinator) 07921 847347; Avril Da Silva (Play and Youth Work Leader) 07933899700.	SK Youth club meets in the village hall every Wednesday @ 6:45 pm

## From the Editorial Team

This is the last issue for 2022. Thanks to everyone who has contributed in any way with articles, photos, news items, and advertising, and for promoting and distributing the SK News. We wish everyone a Blessed Christmas. The next edition will be in January 2023 and the deadline for submission is 10 December 2022. The SK News is published every other month. The electronic version can be found on the South Kilworth website. Please send news, photos, and articles to sknews@southkilworth.co.uk. News that does not coincide with the printed SK News can be uploaded to the South Kilworth website.

## SOUTH KILWORTH SAFARI SUPPER – SAT 26<sup>TH</sup> NOVEMBER

The confirmed date for this year's Safari Supper is Saturday 26<sup>th</sup> November. For those of you who haven't taken part before, it is a sociable and fun way to spend the evening. The perfect way to meet other people in your village.

It takes the form of an informal dinner party in which each successive course is prepared and eaten at the residence of a different host. This can be anything, from soup, to lasagne to cheesecake. It can be shop brought or homemade. The important bit is about getting to know others that live near yourself. Not worrying about what food to prepare. The evening starts at the village hall from 7 pm where the bar will be open for pre-dinner drinks and the location of your first venue will be revealed.

### Approx. eating times are as follows:

Starter: arrive 8 pm eat at 8.15 pm – it is usual to provide a choice

Main Course: arrive at 9 pm eat at 9.15 pm – we suggest you cook something that can be left in the oven

Pudding: arrive at 10.15 pm eat at 10.30 pm – it is usual to provide a choice

Following your safari around the village and dining with different people at each course. The evening ends when we all meet up and you will have a chance to catch up with anyone you've missed along the way. If you would like to join in and see what it's all about without cooking, we have a few spaces for non-cooks. But be quick!

I know it can be quite intimidating when joining in on an event like this. Any questions, even if you think they are silly let me know. Hope to see you there. Any questions please get in touch.

**Booking form is on the back page of this SK News and [www.southkilworth.co.uk](http://www.southkilworth.co.uk)**

**Vicky Storey 07708 382165**

## South Kilworth Snippets

### Macmillan Coffee Morning

Many thanks to all who attended the coffee morning on 30<sup>th</sup> September in the Village Hall. We raised £1130 for Macmillan Cancer Support.

**Liz Sanders**



### Concert Raffle Winners

1st. Ticket 10171 Marilyn Aram  
2nd. Ticket 0577 Theresa Phillips  
3rd. Ticket 0129 Pauline Vease  
Congratulations and thanks to all who participated!

**Colin Derrick**

### Oak Tree House Garden

Many thanks to everyone who visited the garden when we opened for the National Garden Scheme this summer. Particular thanks to Liz and Steph for their donations of delicious cakes, Rob & Toni at the SK News for all the help with publicity, and the Kilworth Korks for their group visit and generous donation. We opened for 2 weekends and also welcomed 7 groups, including coach trips from Solihull and Northumberland. This year the money raised from admission, refreshments and plant sales was nearly £4000, all of which goes to the nursing and healthcare beneficiaries of the National Garden Scheme.

**Pamela Shave. County Organiser, Leicestershire**



### Green Fingers?

October's guest speaker at the local Gardening Club in Welford was Joe Whitehead, the Head Gardener at Burghley House near Stamford. His presentation was interesting, informative and very, very amusing. He has offered to escort a coach load of us around Burghley Gardens next summer. That should make for a really good 'outing'. There are hardly any Gardening Clubs surviving after Covid forced them to close but, as many folk from South Kilworth already know, there is a thriving Club meeting every month over in Welford Village Hall. The next meeting is November 17th at 7.30 pm and we are encouraging new members to come along. Your first trial visit is free and annual membership is just £15. Guest speaker on 17th will be horticulturalist and historian Michael Brown and his subject "Ghastly Gardening- Horticulture's Horrible History" Please come and join us. **Kevin Coyne**

**NOTE WE ARE BACK IN THE MORNING !**

**Next Community Cafe**

**NOVEMBER 8**

**in the Village Hall 11 - 1pm**



## Stanford Reservoir

There have been many good birds since my last article, so I have covered some of the more exciting of these in this write-up. A full list of sightings can be seen by visiting [www.stanfordrg.blogspot.com](http://www.stanfordrg.blogspot.com).

### Two New birds for the site – the expected and the unexpected

With such a vast array of species already recorded at the site, adding new birds is always a challenge and we often go a few years before we add one. Our last new bird was added back in 2017 so to get two in a short period of time is excellent.



On the 28<sup>th</sup> August whilst scanning through birds on 'the point' I picked up a small egret species which was immediately identifiable as a Cattle Egret, the first ever record for the site. To say it was expected sounds a little blasé however, there has been a real growth in numbers across the south of England over the past few years and the population expansion has continued north. Cattle Egret has actually bred in Northants recently but is still a scarce bird in Leicestershire. They are smaller than Little Egret with a short, yellowish bill. This bird was an adult in summer showing apricot wash on the head and breast (see images).



On 8<sup>th</sup> September, the ringing group caught the nationally rare, Blyth's Reed Warbler. This was not only a first for the site but also a first for Northamptonshire. A tricky bird to identify even in the hand with the main focus being on the wing formula. Another fantastic unexpected addition to the Stanford list.

### Stanford's Fifth ever Wryneck

On the 30<sup>th</sup> August, Stanford's fifth ever Wryneck was caught and ringed (image right). Still a very scarce bird in both counties with less than 5 records typically each year.



### A visitor from Norway

On the 31<sup>st</sup> August, I found a Ruff (a type of wading bird that is pretty scarce at the reservoir). This was followed very quickly with a second bird on the 3<sup>rd</sup> September; this one however had a colour ring and a flag on the leg with a three-letter code. Despite numerous attempts to read the code the bird was always too far away. However, I was able to carefully approach the bird on the evening of 4<sup>th</sup> September using the long grass in front of the hide to conceal my presence, I was now close enough to see the code. Having done some research I was able to locate the group that had ringed the bird. It had a light green coloured flag with the code 'PPS' and had been ringed in Blindheimsvikane, Norway. It was ringed on 27<sup>th</sup> August 2022 at 22.00 – it had covered a distance of 1204km (straight line) in only 7 days!

### A triple helping from Siberia



Yellow-browed Warblers are rare visitors inland, originating from Siberia and normally occurring in late September and October, typically when winds have been in an easterly direction. On the 30<sup>th</sup> September the ringing group caught one which was actually the 8<sup>th</sup> record for the site (the 7<sup>th</sup> to be ringed). We weren't finished there though. Local birder, Steve Nichols, found a second bird on 10<sup>th</sup> October on the Leicestershire side of the reservoir. It spent all of its time moving around, feeding actively with a mixed tit flock. I failed to see it on the Monday but had great views

early the following day. The hattrick was completed with another bird caught and ringed on the 14<sup>th</sup> October. Amazing to think that Stanford has had 3 in 2022 and has now had 10 records overall (1 in Leicestershire and 9 in Northamptonshire) making it one of if not the leading inland site for records of this long distant traveller.

### The first ever colour-ringed Great Egret in Leicestershire

At the opposite end of the size scale to Cattle is the Great Egret. It is heron size and becoming a more frequent visitor in the autumn and winter months. Breeding has been confirmed at a number of locations across the UK and a bird that had been ringed at a nest site visited the reservoir briefly on 28<sup>th</sup> September and 3<sup>rd</sup> October. I managed to read the code on the colour ring when the bird was resting in a tree. It was 'ABU' and after some digging, I established that it had been ringed in the nest on the 7<sup>th</sup> May in Somerset. It has also been reported in Lincolnshire on 2 occasions and in West Yorkshire. This is the first ever colour-ringed Great Egret that has been found in Leicestershire.

Chris Hubbard [c.hubbard2@icloud.com](mailto:c.hubbard2@icloud.com)



## THE ART GROUP



I joined the South Kilworth Art Group in 2011. It was being run by Steve Agar, an accomplished painter, and I felt nervous about my lack of drawing ability. Fortunately, I was made to feel at home and was able to create art, in various ways, so the ability to draw wasn't essential, for me to enjoy this creative pastime.

On the 4<sup>th</sup> of June 2012, the Art Group held an exhibition in the Village Hall Committee Room, as part of the Village celebrations for Queen

Elizabeth II's Diamond Jubilee. The sun shone and the villagers turned out in force.

Ten years on and I am still enjoying my artwork, along with Gail, Ralph, Nigel, Mike, Alan, Anne, Neelu, Robin and Hilary Craig – who now lives in Scotland, but joins in Online.

New members are always welcome, and we meet every Thursday morning from 9.30 am to 12 midday in the Village Hall. Villagers are welcome to drop in at coffee time (10.30 am) to see how we are getting on. For more information call me on 07912031816 or email

[magsroberts@yahoo.co.uk](mailto:magsroberts@yahoo.co.uk)



*4 June 2012 Queen's Diamond Jubilee Art Exhibition (Maggy Roberts, left and Hilary Craig, right)*

**Maggy Roberts**

## Autumn fun at South Kilworth Primary School

We were delighted to welcome the children back into school after the summer break, and even more excited to meet our new Foundation Stage children properly. Everyone has settled into their school routines really well, with our new intake enjoying the story of Goldilocks and the Three Bears as this term's topic. All the children have been enjoying the late summer sunshine and making the most of outdoor learning opportunities, PE lessons, Gardening Club and lunchtime fun. This year we're really



looking forward to welcoming a community apple pressing group into school to link into our Harvest Festival work, bringing in speakers to inspire our children, and particularly our girls into science, maths and technology based careers, and as always, putting on a nativity play and church services for all the parents to enjoy. This term is always a busy one but one we love, especially as the excitement for Christmas builds!



At South Kilworth Primary School we are committed to ensuring our pupils receive a well-rounded and balanced education; one that encompasses the full academic curriculum, alongside opportunities that enrich their development. Our children learn to swim from when they start school, they go on trips to museums and galleries to support their learning,

and they join with local community groups to discover new skills and career paths. If you'd like to know more about our school, or to be given a tour if you're looking for a primary school place, please do contact the Office on 01858 575 307 or email [office@ski.learnat.uk](mailto:office@ski.learnat.uk)

**Georgie Willock.**

Engagement and Comms Coordinator, Learn Academies Trust

### JR Pest Control

---

Ants | Bed Bugs | Bees | Cockroaches  
 Fleas | Mice | Moles | Moths  
 Rabbits | Rats | Squirrels | Wasps

---

**Comprehensive Pest Control Service**  
 Residential, Commercial, Industrial & Farms  
 Evenings, Weekends & Emergency Callouts  
 Investigation, Control & Prevention  
 BPCA Qualified & Fully Insured

---

Tel: 07967 821421  
 E-mail: [enquiries@jrpestcontrol.co.uk](mailto:enquiries@jrpestcontrol.co.uk)

## A.T. BROWN & SON

### CLEANCARE SERVICES

**PROFESSIONAL CARPET & UPHOLSTERY CLEANERS**

Telephone: 0116 279 6969  
 Mobile: 07442 531 284  
[matt@atbrownandson.co.uk](mailto:matt@atbrownandson.co.uk) [www.atbrownandson.co.uk](http://www.atbrownandson.co.uk)



# JOSEPH MORRIS

## High Class Family Butchers



The business was established between the two world wars by Joseph Morris (the present proprietor's father) in 1930 and is now in its fourth generation.

Awareness of customer requirements sees us continually upgrading the service we provide. We have our own abattoir, catering business, three butcher stores and a kitchen where we make our own pork pies, sausage rolls, dinner pies, pasties & haslet. These

**Tel: 01858 575210**

**Email: [shop@joseph-morris.co.uk](mailto:shop@joseph-morris.co.uk)**

**Web: [www.joseph-morris-butchers.co.uk/](http://www.joseph-morris-butchers.co.uk/)**



***Here it is! The family Christmas hamper that we have to offer this year. To order, please come into the shop, call or email with a date of collection.***

### South Kilworth Shop

#### Opening Times

Monday – 7.00 am to 5.30 pm

Tuesday – 7.00 am to 5.30 pm

Wednesday – 7.00 am to 5.30 pm

Thursday – 7.00 am to 5.30 pm

Friday – 7.00 am to 5.30 pm

Saturday 7.00 am – 1.00 pm



*Bliss & Beauty*  
The Complete Skincare Specialists



Bliss & Beauty are based in the beautiful village of South Kilworth.

We specialize in treating skin, and offer free consultations to help tackle your skin concerns, whether it's acne, rosacea, or simply the joys of ageing!!! Consultations are very in depth and include the option of a Zoom session or phone call, if preferred. You can call the salon on 01858 571244 and leave a message, or email us on [info@blissandbeauty.co.uk](mailto:info@blissandbeauty.co.uk)

Follow us on Facebook and Instagram and see some of our successes



## The Hollies Bed & Breakfast South Kilworth



Host Tim Mills would love to welcome visiting family and friends of South Kilworth residents to his lovely 200-year-old upmarket bed and breakfast guest house and venue. Situated next to the pub, Tim has 6 beautifully appointed smoke-free

guestrooms with all the expected amenities, including a barbecue and a terrace area. He offers a Full English/Irish breakfast daily.



There is no excuse for not having family and friends over for a visit with this home from home location on our doorstep. Please call Tim on 07811 652267 or email: [Mills.Tim3@icloud.com](mailto:Mills.Tim3@icloud.com) to check on availability.



## Korks September and October Events

### Long Alley Skittles – September

The Bulls Head at Cosby made us feel very welcome and a fun evening was had by all. Much harder to get a good score than on the table skittles we have in the village pub, but nice to do something a bit different! **Kate Pearson**

### Pop Up Bistro - October

What an amazing evening – greeted at the door by our visiting hostess who took our coats and served us drinks. Each person prepared and cooked one of the items on the menu which were then introduced and presented at our sit-down dinner. We tasted all the options, then chose our meal for each course. Delicious food, great company and so well organised by Tina who had all the ingredients prepared in advance! Now we all have a few more recipes in our arsenal, all of which are designed to impress! **Sandra Acton**



Month	KORKS Event
November	Wreath making - with Wrights Florist in Lutterworth
December	Christmas Dinner
January 2023	Planning events meeting in the pub

### Upcoming Korks Events

All ladies are welcome to join. You need to join the KORKS WhatsApp group to find out about events. You will be notified at least a month before the event of all the details. You can then sign up for the event if you are interested. If you are not on the KORKS list please WhatsApp Claire on 07590254043 to be added.

## F & W Plumbing & Heating Services Ltd Elmcroft Road | North Kilworth | Lutterworth | LE17 6HX Bespoke Bathroom & Kitchen Design & Installation

Over 30 years experience in Designing and Installing Contemporary to Traditional Kitchens and Bathrooms



Call Jason for Free Quotation on 07866741261 | Email: [jasonfandw@hotmail.com](mailto:jasonfandw@hotmail.com)  
[www.fandwplumbingandheatingservices.co.uk](http://www.fandwplumbingandheatingservices.co.uk)

"We employed Jason to revamp our hot water system, bath and shower room. The quality of his work and Jason's attention to detail is exceptional. Everything Jason said he would do, he did. He was totally reliable. The whole project was completed on time and on budget. We are delighted with his work and have no hesitation in recommending him."   
Graham and Julie Fish | North Kilworth

"Jason was a great help when we were choosing the fittings for our bathroom and downstairs cloakroom. He started and finished the work in line with the agreed programme dates. The quality of the work carried out was first class and we could not be more pleased with the completed job. We have no hesitation in recommending Jason."   
Phil & Barbara Lawrence | North Kilworth

Plumbing | Joinery | Plastering | Electrical | Decoration | Floor & Wall Tiling  
Gas Safe Reg. No. 75883 | Hot & Cold Water System Upgrades | Boiler Heating System Upgrades  
Project Managed Personally with all Associated Trades coordinated for High Quality Finish.



# Christmas at St Nicholas's Church, South Kilworth

**Sunday 11th December @ 4 pm candlelit Christingle Service**

**Christmas Day @ 10am our traditional Family Service for everyone lasting about 30 mins. Everyone welcome**



## HD Physiotherapy and Sports Injury Practice

**Sophie Davies**

Chartered Physiotherapist  
MCSP, HCPC Registered

07818 858741 or 07939 234579  
[sophie@hdphysiotherapypractice.co.uk](mailto:sophie@hdphysiotherapypractice.co.uk)  
[www.hdphysiotherapypractice.co.uk](http://www.hdphysiotherapypractice.co.uk)



- ✓ Expert local Physiotherapy assessment, treatment and rehabilitation
- ✓ Treadmill and gym facilities for dynamic assessment
- ✓ COVID Secure
- ✓ Registered with all leading healthcare insurers

**JLR BESPOKE**  
PROPERTY RENOVATIONS



JLR Bespoke Property Renovations are an experienced and trusted Project Management and Construction team based in North Kilworth, Leicestershire.

If you have a project or idea in mind, please don't hesitate to contact us either by phone or via our website.  
Tel: 07866 741 261 (Jason Wright)  
[www.jlrbespokeproperties.com](http://www.jlrbespokeproperties.com)

# AVON SWIFT GROUP OF CHURCHES SERVICES NOVEMBER 2022

Wednesday 2<sup>nd</sup> November

7.30 p.m.	Shawell	Compline	Local Team
-----------	---------	----------	------------

Sunday 6<sup>th</sup> November 3<sup>rd</sup> Before Advent

RED/GREEN

Lectionary Page: 936 Job 19. 23 – 27a 2 Thessalonians 2. 1 – 5, 13 – 17 Luke 20. 27 - 38

9.30a.m.	Stanford on Avon	Holy Communion (CW)	Rev. D. Hebblewhite
11.00 a.m.	Gilmorton	Holy Communion (CW)	Rev. A. Mickethwaite
4.00 p.m.	Peatling Parva	Songs of Praise	Local Team

Sunday 13<sup>th</sup> November

REMEMBRANCE SUNDAY

RED/GREEN

Lectionary Page: 940 Malachi 4. 1 – 2a 2. Thessalonians 3. 6 – 13 Luke 21. 5 - 19

9.30 a.m.	South Kilworth	Remembrance Service	Rev. Canon B. Davis
10.15 a.m.	Misterton	Remembrance Service	Rebekah Jeffery-Cooper/ Keith Wilding
10.30 a.m.	Catthorpe	Remembrance Service	Rev. A. Rhoades
10.30 a.m.	Ashby Magna	Remembrance Service	Rev. T. Colling
10.45 a.m.	Swinford	Remembrance Service	Rev. D. Hebblewhite

Sunday 20<sup>th</sup> November

CHRIST THE KING

WHITE

Lectionary Page: 944 Jeremiah 23. 1 – 6 Colossians 1. 11 – 20 Luke 23. 33 - 43

9.30 a.m.	North Kilworth	Holy Communion (CW)	Archdeacon Claire Wood
11.00 a.m.	Peatling Parva	Holy Communion (BCP)	Rev. Canon B. Davis
4.00 p.m.	Shawell	Choral Evensong	Rev. Canon B. Davis

Sunday 27<sup>th</sup> November

1<sup>st</sup> Sunday of Advent

PURPLE

Lectionary Page: 1 Isaiah 2. 1 – 5 Romans 13. 11 – 14 Matthew 24. 36 - 44

8.30 a.m.	South Kilworth	Holy Communion (BCP)	Rev. Canon B. Davis
11.00 a.m.	Ashby Magna	Holy Communion (CW)	Rev. D. Hebblewhite

Sunday 4<sup>th</sup> December 2<sup>nd</sup> Sunday of Advent

PURPLE

Lectionary Page: 3 Isaiah 11. 1 – 10 Romans 15. 4 – 13 Matthew 3. 1 - 12

9.30 a.m.	Stanford on Avon	Holy Communion (CW)	Rev. D. Hebblewhite
4.00 p.m.	Gilmorton	Christingle Service	Rev. A. Mickethwaite

**DRAFT** please check [avonswift.co.uk](http://avonswift.co.uk) for updates

## AVON SWIFT GROUP OF CHURCH DECEMBER SERVICES

Sunday 4<sup>th</sup> December

2<sup>nd</sup> Sunday of Advent

PURPLE

Lectionary Page: 3 Isaiah 11. 1 – 10 Romans 15. 4 – 13 Matthew 3. 1 - 12

9.30a.m.	Stanford on Avon	Holy Communion (CW)	Rev. D. Hebblewhite
4.00 p.m.	Gilmorton	Christingle Service	Rev. A. Mickethwaite

Tuesday 6<sup>th</sup> December

6.00 p.m.	Swinford	W.I Carol Service	Local Team
-----------	----------	-------------------	------------

Wednesday 7<sup>th</sup> December

7.30 p.m.	Shawell	Compline	Local Team
-----------	---------	----------	------------

Sunday 11<sup>th</sup> December

3<sup>rd</sup> Sunday of Advent

PURPLE

Lectionary Page: 7 Isaiah 35. 1 – 10 Luke 1:46b-55 Matthew 11. 2 - 11

9.30 a.m.	South Kilworth	All Age Service	Beth Rogers
11.00 a.m.	Swinford	Holy Communion (CW)	Rev. T. Colling
11.00 a.m.	Kimcote	Baptism with Holy Communion	Rev. A. Mickethwaite
11.00 a.m.	Misterton	Holy Communion (CW)	Rev. M. Cook
12.30 a.m.	Swinford	Baptism	Rev. T. Colling
6.00 p.m.	Shawell	Carol Service	Rev. Canon B. Davis



**Wednesday 14<sup>th</sup> December**

9.00 a.m.	South Kilworth	School End of Term Service	Sharon March
-----------	----------------	----------------------------	--------------

**Thursday 15<sup>th</sup> December**

1.45 p.m.	Swinford	School End of Term Service	Sharon March
-----------	----------	----------------------------	--------------

**Friday 16<sup>th</sup> December**

9.00 a.m.	North Kilworth	School End of Term Service	Sharon March
11.00 a.m.	Gilmorton	School End of Term Service	Sharon March

**Saturday 17<sup>th</sup> December**

5.30 p.m.	Catthorpe	Carol Service	Judith Smith
-----------	-----------	---------------	--------------

**Sunday 18<sup>th</sup> December 4<sup>th</sup> Sunday of Advent **PURPLE****

Lectionary Page: 10    Isaiah 7. 10 – 16    Romans 1. 1 – 7    Matthew 1. 18 - 25

10.30 a.m.	North Kilworth	Baptism with Holy Communion	Rev. Canon B. Davis
11.00 a.m.	Peatling Parva	Holy Communion (CW)	Rev. A. Micklethwaite
4.00 p.m.	Shawell	Holy Communion (CW)	Rev. Canon B. Davis
6.30 p.m.	Kimcote	9 Lessons & Carols	Local Team

**Saturday 24<sup>th</sup> December CHRISTMAS EVE **PURPLE****

Lectionary Page: 13    Isaiah 9.2-7    Titus 2.11-14    Luke 2.1-14[15-20]

3.00 p.m.	Swinford	Nativity	Local Team
3.00 p.m.	Gilmorton	Nativity	Local Team
4.00 p.m.	Misterton	9 Lessons & Carols	Local Team
11.00 p.m.	Gilmorton	Midnight Holy Communion (CW)	Rev. A. Micklethwaite
11.00 p.m.	North Kilworth	Midnight Holy Communion (CW)	Rev. S. March

**Sunday 25<sup>th</sup> December CHRISTMAS DAY **WHITE****

Lectionary Page:    Isaiah 52.7-10    Hebrews 1.1-4[5-12]    John 1.1-14

9.30 a.m.	Catthorpe	All Age Service	Judith Smith
10.00	South Kilworth	All Age Service	Beth Rogers
10.30 a.m.	Peatling Parva	Holy Communion (BCP)	Rev. A. Micklethwaite
11.00 a.m.	Shawell	Holy Communion (CW)	Rev. Canon B. Davis

**Wednesday 4<sup>th</sup> January**

7.30 p.m.	Shawell	Compline	Local Team
-----------	---------	----------	------------

**Sunday 8<sup>th</sup> January**

8.30 a.m.	Kimcote	Holy Communion (BCP)	Rev. A. Micklethwaite
9.30 a.m.	Swinford	Holy Communion (CW)	Rev. T. Colling
9.30 a.m.	South Kilworth	All Age Service	Beth Rogers
11.00 a.m.	Misterton	Holy Communion (CW)	Rev. T. Colling

## KILWORTH CARPENTER

**30 Years experience in domestic work, including:**

- Door hanging
- Built in cupboards and wardrobes
- Flooring installation - solid wood and laminate
- Fencing - new, replacement panels and repairs
- Garden structures - sheds, summer houses and pergolas
- General carpentry repairs and alterations
- Painting and decorating
- **No job too small!**









**CONTACT NEIL SMITH ON 07835 976998**  
or neths62@icloud.com FOR A **FREE QUOTE**

## Albert's Café and Tearoom

*Friendly atmosphere and freshly cooked food*

*All day breakfasts, toasties, jacket potatoes, cakes and more...*

**Open Thursday – Sunday 10 – 3**  
**To pre-order, call 07742342772**



**Unit 2, Evergreen  
Fields, Pincet Lane,  
North Kilworth,  
LE17 6NE**





## Contact Us Today

Join the family of Home Instead CAREGivers and help make the world of difference.

- ✓ Award winning training
- ✓ Flexible hours
- ✓ Great rates of pay
- ✓ Make a difference to older people's lives

Contact us on: 01455 247100  
[www.homeinstead.co.uk/rugby](http://www.homeinstead.co.uk/rugby)

Each Home Instead Senior Care franchise office is independently owned and operated



**DRAFT MINUTES OF A PARISH COUNCIL MEETING FOR SOUTH KILWORTH**  
**Held on Tuesday, 11<sup>th</sup> October 2022, 7.15p.m. Minutes Ref: 821/1022Confirm Members**

**Present**

Cllr K Coyne - Vice Chairman  
 (Chaired)

Cllr G Byrne (GB)  
 Cllr T Wood (TW)

Cllr E Derrick (ED)  
 Mrs K Brown (KB) – Clerk

**1.0 To Receive Any Apologies**

Cllr P Allcock – Apologies received and accepted.

**2.0 Disclosure of any Member's Interest/s**

TW expressed a continuing interest in the planning application 22/01489/FUL, The Old Rectory, and his intention to abstain from any discussion.

**3.0 To Confirm Other Attendees** Three attendees

**4.0 To Confirm Minutes of Previous Meeting of Council, held on 27<sup>th</sup> September '22**

These minutes were confirmed to be a true record of matters discussed, and decisions reached, by the Parish Council, and duly signed.

**5.0 Public Participation / Correspondence**

**5.1** Re playing field overhanging tree branches onto neighbouring parishioner's garden: KB reported that HDC had not yet stipulated a date for them to trim the branches. Action: KB to continue to liaise with HDC.

**5.2** Resident's complaint of privacy issues and light obstruction caused by the large Sycamore tree in the children's play area: KB reported that HDC had not yet stipulated a date for them to pollard the tree, as previously agreed. Action: KB to continue to liaise with HDC.

**5.3** Resident's complaint re privacy / noise issues caused by children climbing on the zip wire in the children's play area: KC reported that the landlord of the property had consented to the PC adjusting the height of the bordering fence to help relieve this nuisance. Action: KC/GB to discuss options with contractor, liaising with the tenant. TW agreed to arrange with the zipwire supplier to fit noise restricting grommets to the equipment.

**5.4 This item was heard prior to item 6.1 – TW left the room.** Two of the attendees expressed their wish to understand the PC's previous decision to object to their planning application 22/01489/FUL, regarding The Old Rectory, Rugby Road. The applicants provided photographic evidence to show that there had originally been dormer windows in the property, subsequently removed, and therefore any dormer windows fitted in the future, would in fact be re-instatements. There was photographic evidence showing examples of listed local properties of a similar age that housed dormer windows and therefore probably was in keeping with a grade 2 listed design. It was also demonstrated, via photographs, including aerial views, that any new privacy issue would be extremely minimal and it was not thought that there would be any true detriment to neighbouring properties. Nevertheless, the attendees offered to use opaque glass in the dormer reinstatements, to avoid any privacy concerns. These attendees left the meeting at this point, 19.50pm. The PC agreed, on the comprehensive information now received from the applicants, to withdraw their objection, and to ask the District Council to note the applicants' offer regarding the use of opaque glass in selected windows. Action: KB to submit the above comments to HDC. TW re-joined the meeting and KC updated TW of the PC's decision. There was no further discussion.

**6.0 Planning Matters**

**6.1** New Applications: 22/01754/FUL, 2 Tanser Cottages, Walcote Road, demolition of existing conservatory and erection of single storey rear extension (notification received after publication of agenda). PC agreed no comment.

**6.2** Planning Decisions: None

**7.0 Parish Council Procedures** No update.

**8.0 Accounts / Finance Matters**

**8.1** The PC approved the following payments:

Nett	Vat	Total	Details / Comments
95.00	19.00	114.00	ROSPA Playground Inspection.

**8.2** KB reported on the cash balances held by the Parish Council at 30/09/22, presenting corresponding bank reconciliation, bank statements, and a quarterly year to date budget comparison. PC approved and chairman signed documents.

**8.3** Re CIC re-imbursement of £1430.44, as per the HCYC invoice for youth club services covering the period of Jan to Mar'22: to be carried forward until the return of PA.

**9.0 Highways and Footpaths**

- 9.1** Re the Mobile Vehicle Activated Sign (MVAS) to be installed in the village: KB reported that HDC had confirmed that installing one post only would not comply with their regulations. The previously agreed sites of Walcote and Welford Road were re-confirmed. TW agreed to carry out the outstanding resident consultation and KC agreed to prepare the risk assessment. The PC agreed the most suitable product would be the Evolis Solar Mobile at £2250. Action: KB to source a
- 9.2** Re-siting of a village street light on Welford Road, removed by Western Power: KB confirmed that LCC were in the process of liaising with Western Power to have the street light banded to WP's newly erected metal pole. LCC have not yet stipulated a date for this work to be carried out. Action: KB to continue to pursue with LCC.
- 9.3** Walcote Road bus shelter maintenance: KC confirmed that, due to the lack of power, the bus shelter would not be suitable for the housing of a defibrillator. Action: item to be carried forward to next month to further discuss the option of installing recycling bins within the bus shelter.

**10.0 Grounds and General Outside Maintenance**

**10.1** Village Litter Picks: Item to be carried forward to next month. TW will speak to the Football Club regarding help to clear the rubbish below the playing field hedges, allowing the underlying grass to be mowed. A date for the next village litter pick was not agreed at this stage. Pending.

**10.2** Reviewing of the current grass cutting contracts with HDC: KB reported that she had not yet received a date from HDC with details of updating the contracts. Action: KB to pursue with HDC.

- 11.0 Recreation**
- 11.1** Regular Play Area Safety Inspections: The recent ROSPA report was discussed. TW and ED agreed to do a 'walk round' of the playground in order to assess any required repairs to be carried out. Action: KB to provide 2 hard copies of the report for the next meeting.
- 11.2** Future Holiday Club, summer '23: KB reported that an application to the National Lottery Fund to finance a club in 2023 would not be an option. Action: KB to discuss with the holiday club provider regarding any alternative options that may be available.
- 11.3** Youth Club: PC agreed to accept the latest terms of service issued by HCYC for the autumn '22 term. It was agreed however that a full review of this provision should be carried out before the end of the year, to properly evaluate the continuation of the club. Action: KB to request a representative of the Club provider to attend the December PC meeting.
- 11.4** OPCC (Office of Police and Crime Commissioner) Funding offered to increase positive activities for young people, application deadline 24/10/22: Action: KB to confirm terms and criteria for the fund and if applicable, prepare an application to possibly fund a Holiday Club for the summer of 2023.
- 12.0 Village Website**
- 12.1** New Village website: No update.
- 13.0 S106 and CIC Funding**
- 13.1** Community feedback re the spending of these funds: The PC agreed to wait until they have an outcome regarding funding applications for the MUGA proposal before any further feedback is sought. Pending.
- 13.2** Proposed plans for the landscaping of Walcote Road corner verges: PC agreed to carry this item forward for further discussion next month. Pending.
- 14.0 South Kilworth News**
- 14.1** No update.
- 15.0 Funding for MUGA proposal – Platinum Jubilee '22 and S106**
- 15.1** Due to the extensive and time-consuming complexities of the planning permission procedure, the PC agreed to wait until funding had been confirmed before submitting an application to HDC. KB reported that, in response to the S106 funding application, HDC had requested evidence from any village clubs that had expressed a hope to use the MUGA, if installed. Action: TW to contact the football and bowls clubs, requesting statements to demonstrate the above.
- 16.0 HDC's Local Development Scheme and Neighbourhood Plan**
- 16.1** The PC agreed that a visit from County Hall would be helpful to discuss any required updating of the village plan. Action: ED to arrange for early 2023. Resolved.
- 17.0 Remembrance**
- 17.1** The PC agreed not to lay floral tributes in memory of Her Majesty, Queen Elizabeth II, at the site of the commemorative Indian Bean Tree, due to the unsuitability of the position. Resolved.
- 17.2** The PC agreed not to purchase any Tommy lampost signs for displaying around the village this year. Resolved.
- 18.0 Any Other Business**
- 18.1** GB proposed that the PC request a reinstatement of the periodic visits historically carried out by the local MP, to discuss any issues that may have arisen. Action: KB to contact the local MP for South Kilworth, to make the request.
- 19.0 To Confirm Date of Next Meeting Tuesday, 8<sup>th</sup> November'22, 7.15 p.m.** |  
Meeting ended at 21.50 p.m.

A copy of these minutes will be published on the South Kilworth Website, no later than thirty days from the date of the meeting.



**Do you want to make a difference in your local community whilst developing your own leadership, planning and financial skills?**

**Why not join the award-winning governance team at Learn Academies Trust by volunteering as a Local Governor at South Kilworth C of E Primary School?**



Local Governors work on behalf of the Trust Board, focusing on:

- Standards, curriculum and school ethos
- Health, safety and premises, including safeguarding
- Parental and wider community engagement
- Assurance and oversight of compliance and risk, including finance



**SCAN ME**

To find out more about governance in Learn-AT schools:

- Go to <https://www.learnat.uk/governance>
- Or email Pippa Darbourne on [pdarbourne@learnat.uk](mailto:pdarbourne@learnat.uk)

To find out more about South Kilworth C of E Primary School go to <https://www.southkilworthprimaryschool.com/>





## **The visit of the SALVATION ARMY BRASS BAND to St. Nicholas' Church, South Kilworth**

For many of us, we probably only become aware of the Salvation Army Brass bands in and around Christmas. They are almost as part of the Christmas ambience as Mistletoe, Christmas Trees, Santa, and a glass of warming grog. There they are, playing in all weathers, in village and town hall squares, huddled around their brass instruments, belting out cheery tunes as we scurry around the shops desperately seeking those last minute gifts. And yet, the Salvation Army is a huge force for good, both here in the UK, and around the world. With some 1.7 million members, the Salvation Army is at the forefront of helping the homeless, those suffering in disaster areas, and offering humanitarian aid. The bands themselves had their roots back in 1878, when a local Methodist preacher, Charles Fry, and his three sons began playing at open air meetings to draw in crowds, and to quell opposition to their preaching. Whilst William Booth, the founder of the Salvation Army was uncertain about organised music, he certainly recognised that an army band could be an effective evangelising group. By 1883 there were some 400 Salvation Army bands in the UK. Worldwide there are over 2,500 brass bands, with over 427,000 members, delivering their unique, vibrant style to so many communities.

We are fortunate here in South Kilworth that the South Leicestershire Salvation Army Brass Band are coming to entertain us on the 9th December, and to start the Christmas season with a fanfare and a flourish!

**Colin Derrick**

### **St. Nicholas' Church, South Kilworth Presents**

**A Wonderful Evening of Entertainment With The South Leicestershire Salvation  
Army Brass Band  
FRIDAY 9TH DECEMBER 2022 @ 7.30pm**



For many, the sound of Christmas often conjures up memories of town squares, cold streets, winds blowing, and, whatever the weather, the wonderful warming sound of a Salvation Army Brass Band, with Trumpets and Trombones echoing in the air. South Kilworth's PCC are therefore so pleased to welcome the South Leicestershire Salvation Army Band to play a festive programme in the sheltering interior of St. Nicholas' Church. It promises to be an evening of warmth and nostalgia, the sounds of Brass rising to the rafters, and suitably accompanied with a cup of mulled wine and mince pie...an ideal start to the Christmas period. Perfect!

Tickets £10 pp (inc: mince pie and mulled wine, supplied with the generous support of the Lutterworth Branch of the Hinckley & Rugby Building Society).

To reserve your tickets, please contact Colin on 07711 054622 Email: [colinderrick@btinternet.com](mailto:colinderrick@btinternet.com)

### **Village Consultation Update**

Following the Village Consultation earlier this year the PC have acted on some of the meeting recommendations, in particular the request for further improvements to our sports facilities. We have applied for funding to the Community Grant Jubilee Fund for a grant towards building a Multi-Use Games Arena on the sports field. This MUGA would allow tennis, football, netball, basketball to be played year-round on an all-weather, fenced, tarmac court. Decision date on our application is scheduled for mid-November, so checkout the village website for any announcement.

Meanwhile repairs have been made to the bus shelters, and the benches around the village have been cleaned or painted. There are costed plans for 2023 to tidy up the village centre (including a Xmas tree, lights and planters and the establishment of a recycling centre). We need project champions to lead the development of some of the other village improvements that were recommended at the meeting, so please volunteer if you can.

SKPC

## Northampton Male Voice Choir Visits South Kilworth

A concert presented by this choir on October 22nd was organised by the Rotary Club of Lutterworth and the church of St Nicholas, South Kilworth. They perform twenty-five concerts a year with the profits going to research into prostate cancer. At full strength, the choir has fifty-five members though with smaller venues the numbers have to be reduced. They have a repertoire at the moment of 51 pieces which are all sung from memory. Their lively and energetic conductor, Stephen Bell, announced at one point that they never know what song is coming next. They have to rely on recognising the keyboard introduction. Their two regular accompanists were not available for this concert, so Mark Pescott was brought in and was actually sight-reading the music. This he did brilliantly. The concert began with an impressive and original presentation of the well-known hymn, 'How great thou art.' The three sections of the choir,



basses, baritones and tenors, each had their moment of glory. Popular songs from Les Miserables and West Side Story followed, they had been especially arranged for male voice choirs and were very effective. The Wellerman, a New Zealand sea shanty, made popular on TikTok, involved some audience participation which was enjoyed by all. After the interval in which legs could be stretched and a glass of wine imbibed, the second half started with 'Let all men sing' by Keith Christopher which proved a dynamic opener. Other songs included 'My love is like a red, red rose', Unchained Melody, Bohemian Rhapsody, and Danny Boy - an excellent programme, brilliantly performed by the choir with a hundred percent concentration. Their dress was immaculate - white shirts, yellow ties, grey suits (with the top button of the jacket done up) - all helped the image of a careful presentation.

At the start, Rev Brian Davis welcomed the large audience and said how good it was to see the church being used for quality music-making. At the close, he thanked the choir, conductor and accompanist for a brilliant performance and concluded with a short prayer and blessing. A wonderful evening's entertainment.

Alan Barraclough



## Christmas Café

**December 13**

11 - 1pm in the Village Hall

Free cake and a cuppa

CHRISTMAS STALLS   RAFFLE   MUSIC

**Special appearances: Father Christmas and our own house Elf**



TWO  
DEAD  
DISSIDENTS

JAMES MEAKIN



Written by James Meakin (from our village), *Two Dead Dissidents* is a tense yet entertaining story, packed to the brim with unexpected twists and turns. With unusual settings in a unique period of time, this novel is a fresh and enjoyable new take on a well-loved genre. *Two Dead Dissidents* is available on Amazon in paperback for £7.99 and on Kindle for £3.99.



### KILWORTH PRE-SCHOOLERS

A space for parents and children to meet.

Thursdays 10-11am  
St Andrew's Church, North Kilworth

Toys and refreshments provided  
A £1 voluntary contribution per child is appreciated

Contact Sophie - 07841 215300 or Sharon - 07889 488038 for details or just come along!





[www.nenettechocolates.co.uk](http://www.nenettechocolates.co.uk)

m: 07811 170633

e: [info@nenettechocolates.co.uk](mailto:info@nenettechocolates.co.uk)



Would you believe it but Christmas is just a few weeks away! Sorry!! I can help you. Inevitably, with chocolate gift ideas.

My boxed truffles include a host of new flavours alongside your favourites too. And of course, I'm now making chocolate Smashables (pictured) for you. Enormous chocolate spheres filled with sweeties. The only way to get them out is to smash the chocolate. This makes a great gift. And party game too!

Jump into my new website to find your special treat and gifts.

*Nenette*  
HAND CRAFTED CHOCOLATES



# NUE HOOPS

CREATE YOUR OWN JEWELLERY

Go to:  
<https://nuehoops.com/>



Choose your charms

Pick your hoops

Add charms to your hoops



**Beautiful and cleverly  
designed jewellery -  
sustainability driven**  
[info@nuehoops.com](mailto:info@nuehoops.com)  
07916416206

# ECLECTIC STOVES

**Multi-fuel Stoves Installation  
Service & Alterations • Chimney Liners  
Chimney Systems Accessories**



**Outdoor Ovens & Accessories  
Outdoor Heaters & BBQ's**

Tel: 077368 14399 - 07976 177987

Email: [info@eclecticstoves.co.uk](mailto:info@eclecticstoves.co.uk)

Web: [www.eclecticstoves.co.uk](http://www.eclecticstoves.co.uk)



Eclectic, Lodge Farm

Walton Lane, Husbands Bosworth LE17 6NN

Open 9-5 Sat and 9.30-3 Thurs

# STOVES



**Multi-fuel Stoves • Installation,  
Service & Alterations • Chimney Liners  
Chimney Systems • Accessories**

Tel: 077368 14399 - 07976 177987

Email: [info@eclecticstoves.co.uk](mailto:info@eclecticstoves.co.uk)

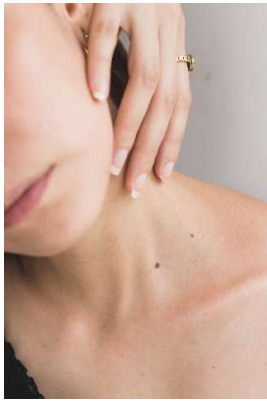
Web: [www.eclecticstoves.co.uk](http://www.eclecticstoves.co.uk)

Eclectic, Lodge Farm

Walton Lane, Husbands Bosworth LE17 6NN

Open 9-5 Sat and 9.30-3 Thurs

## Winter Skin



As the seasons change, so does our skin. It can really take its toll on the skin, moving from heat to cold and vice versa, although I'm guessing as we're all tightening our belts, the heat may not be that hot!!! People are spending money more carefully, so keep reading to find out where you can save this winter.

Firstly, skin is skin, so while there are a lot of products to support certain skin conditions or concerns, please don't feel like you have to use the very best of everything to get good results. Drying of the skin may not just be down to the change in the weather. If you are nearing menopause, your skin may start to feel drier than ever. In the same way that you don't need a whole new routine for winter, please don't be fooled by products labelled 'menopause'. A lot of relief can be achieved with just a few tweaks.

**Cleanser.** Please don't head for oil-based cleansers to provide a more 'nourishing' cleanse.

Your cleanser is meant to cleanse. It should be water soluble, so rinses clean off with water or a gentle flannel leaving no residue. This allows the skin to receive any active products you may be using. If your skin feels dry all the time, avoid a foaming cleanser. There are lovely light cream versions that are water soluble as well, that can leave the skin feeling fresh and clean but not tight.

**Toner.** If your skin is feeling super dry, ditch the toner. If you have got the cleanser right, you may feel you don't need the toner, but it does depend on the toner. Some contain active ingredients in their own right, such as Matrixyl 3000 which can help promote your skin's own production of collagen and elastin but some are little more than alcohol water and can further dry the skin. Many people use toner to remove any last vestiges of cleanser but if you use the right cleanser, this shouldn't be needed.

**Exfoliator.** Step away from the scrub. If you think you need a scrub, then you need to change your skincare. There is nothing good about causing tiny scratches on the skin's surface. Use a flannel to remove your cleanser and make this the maximum amount you exfoliate.

**Actives.** If you use any actives such as Vitamin C serums or Retinol, be aware that you are far more likely to have a reaction at this time of year because the ceramides in the skin dip as the skin gets drier meaning a greater likelihood of a reaction. If this does happen, stop using or reduce usage to once a day in your nightly routine, not in the daytime.

**Moisturiser.** This is where your skin nourishment should be, not in that oily cleanser. You may be a fan of a day cream in the morning and a night cream at night. If you are still feeling dry, consider adding a light oil to your routine. They are often cheaper than a fancy night cream and can give instant relief to a dry, tight skin. Don't overdo it. Remember that if you are using perfumed skincare, that perfume is simply another stress your skin doesn't need, and it may cause a reaction that you've never had before. Look at adding a mild, fragrance-free moisturizer to help nourish and protect.

**Supplements.** There are so many to choose from, so what do you need? Omega 3 is an absolute must at any time of year. If you are going to use one supplement, make it this one! Helps the functioning of every cell in the body (avoid Omega 6 and Omega 3, just opt for the Omega 3). Let's all keep warm this winter and keep safe, Vicki

**Vicki Hart is a senior therapist at Bliss & Beauty in South Kilworth and has a Diploma in Skin Science.**

### Kilworth Accountancy

*Experience counts*

An accountancy practice in the village for all your accounting and taxation requirements.

Qualified accountant and tax specialist with over 35 years experience of routine compliance and the delivery of innovative solutions to strategic and taxation problems.

No charge for initial assessment.  
Why not ask the Accountants in Kilworth?

Email  
martinshave@kilworthaccountancy.co.uk  
Or call  
01858 575481 or 0791 865 1375

## Totally Trees Ltd

Pruning - Felling - Stump removal

### Tree Surgery

**01455 554182**

[www.totallytrees.co.uk](http://www.totallytrees.co.uk)  
[info@totallytrees.co.uk](mailto:info@totallytrees.co.uk)



Kindling  
Hardwood logs



## BARRY JONES

### Electrical Contractor

- No job too small
- Free estimates
- Reasonable prices
- All work guaranteed

Stonebridge House, Black Lane  
Shearsby 0116 247 8077  
Mobile 07831 474700





## Kilworth Springs **PREMIER GOLF CLUB**

Founded in 1993 and overlooking the beautiful Avon Valley in South Leicestershire. Our 18-hole golf course and TrackMan powered driving range are the perfect place to unwind whilst working on your swing.

With a function room available for hire complete with event catering for weddings, special occasions and corporate events. All aspects are open to the public, so whether you are looking for a social game of golf, a drink or bar meal, a premier golfing venue to stage your golf tournament or somewhere to impress for your forthcoming wedding, party, or corporate event – Kilworth Springs Golf Club provides the finest facilities and catering for every occasion.



[www.kilworthsprings.co.uk](http://www.kilworthsprings.co.uk)



# **SOUTH KILWORTH'S 16<sup>TH</sup>**

# **SAFARI SUPPER**

## **SATURDAY 26<sup>TH</sup> NOVEMBER**

THE EVENING STARTS AT 7.00PM AT THE VILLAGE HALL

(BAR OPEN & WINE AVAILABLE TO PURCHASE AND TAKE AROUND FOR THE EVENING)

7.30 PROMPT YOU LEAVE TO GO TO YOUR FIRST HOUSE.

MEETING UP AT THE END OF THE EVENING 11.30/11.45PM

TICKETS £15 PER PERSON (OPEN TO SINGLES & COUPLES)

ONE PLACE FREE FOR MAIN COURSE COOKS & ONE AT £5 FOR STARTER AND PUDDING COOKS.

---

### **SAFARI SUPPER REPLY SLIP (PLEASE RETURN BY 9<sup>TH</sup> NOVEMBER)**

NAME: \_\_\_\_\_ MOBILE NO: \_\_\_\_\_

ADDRESS: \_\_\_\_\_

EMAIL: \_\_\_\_\_

DIETARY REQUIREMENTS/ALLERGIES: \_\_\_\_\_

I WILL COOK FOR 8 PEOPLE (INCLUDING MYSELF & PARTNER)

STARTER

☐

MAIN

☐

PUDDING

☐

DON'T MIND

☐

SORRY CAN'T COOK

☐

WE WOULD LIKE

£15 TICKET

☐

£5 TICKET (IF COOKING STARTER/PUDDING)

☐

FREE TICKET (IF COOKING MAIN COURSE)

☐

CHEQUES TO BE MADE PAYABLE TO "SOUTH KILWORTH VILLAGE HALL"  
PLEASE GIVE TO VICKY STOREY (CULZEAN HOUSE, RUGBY RD 07708 382165)



**Minuteman Press**, Lutterworth  
WE DESIGN, PRINT & PROMOTE...YOUR

- Business stationery
- Large Format
- Wedding stationery
- Labels
- Menus
- Invites
- Promotional Items
- Design Services

and much more

Offering a hassle-free, cost-effective, single source print solution with free delivery to local businesses

We go over and above usual customer service

We come to you to discuss your personal print requirements

**10% off your first order**

**01455 207 508**  
lutterworth@minutemanpress.com  
www.lutterworth.minutemanpress.co.uk  
14c High Street | Lutterworth | Leicestershire | LE17 4AD



Photo contributed by Harriet Langman