

# Inclusive Design



What



Why



How

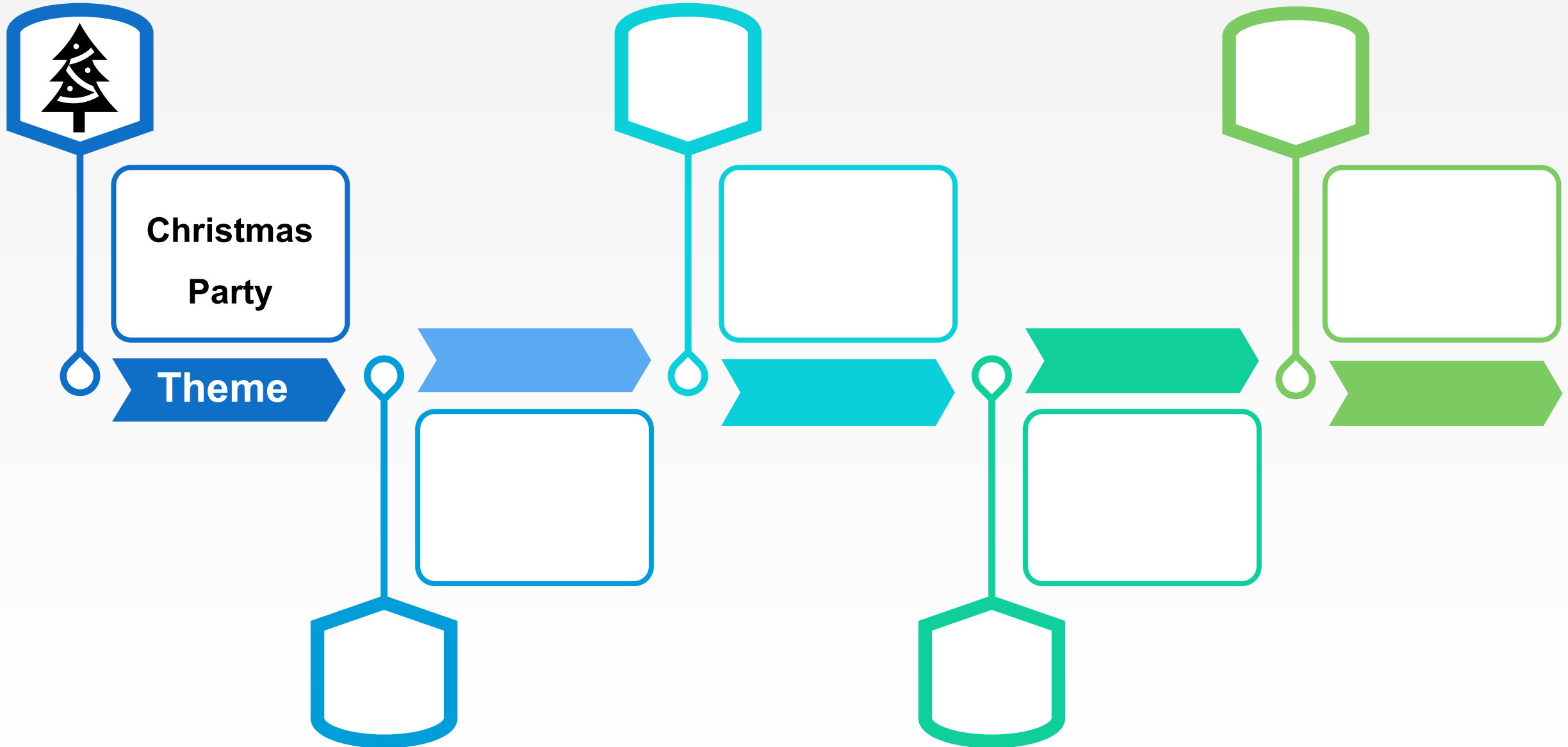
Rubina Halwani



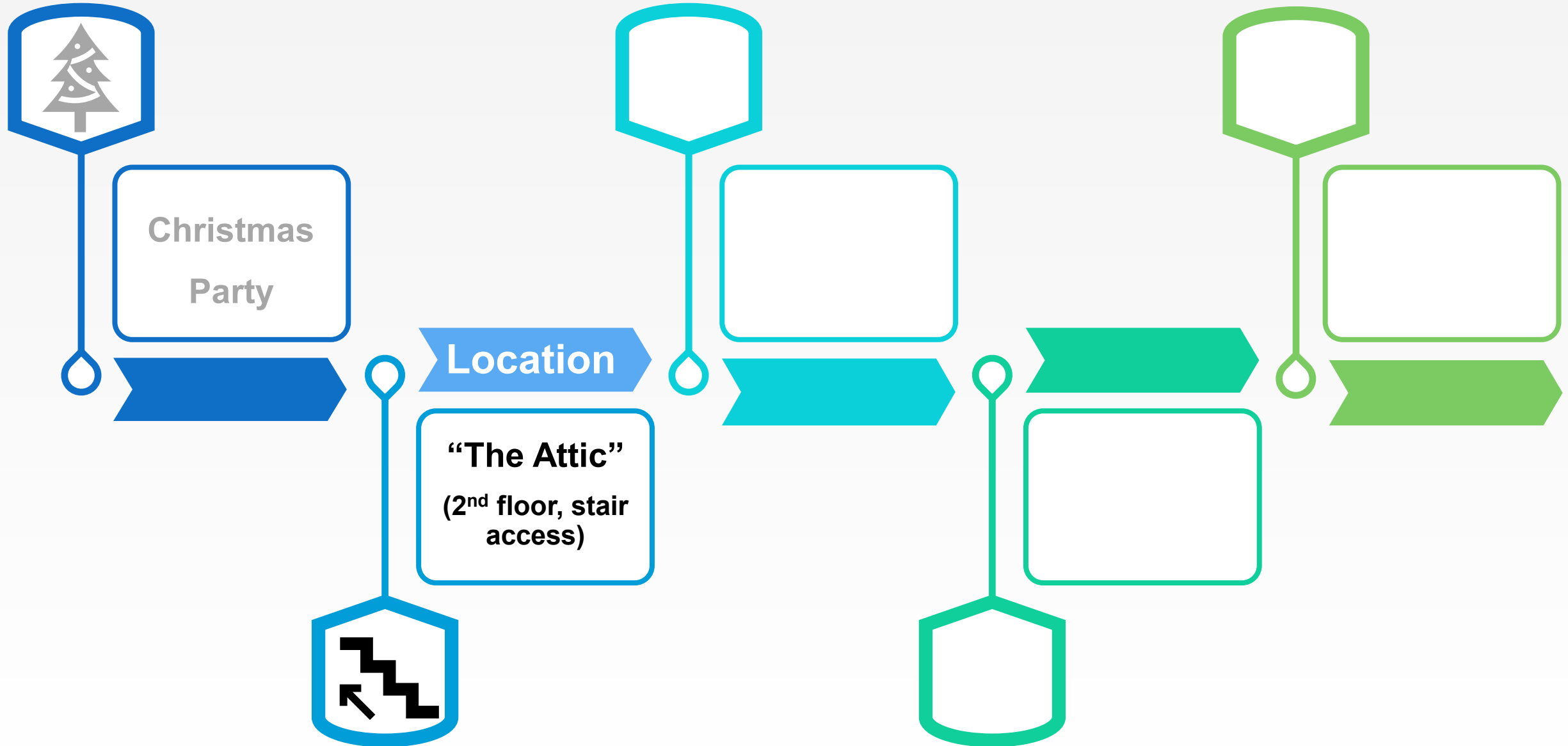
# What is Inclusive Design?

Inclusive design **considers the full range of human diversity with respect to ability, language, culture, gender, age, and other forms of human difference.**

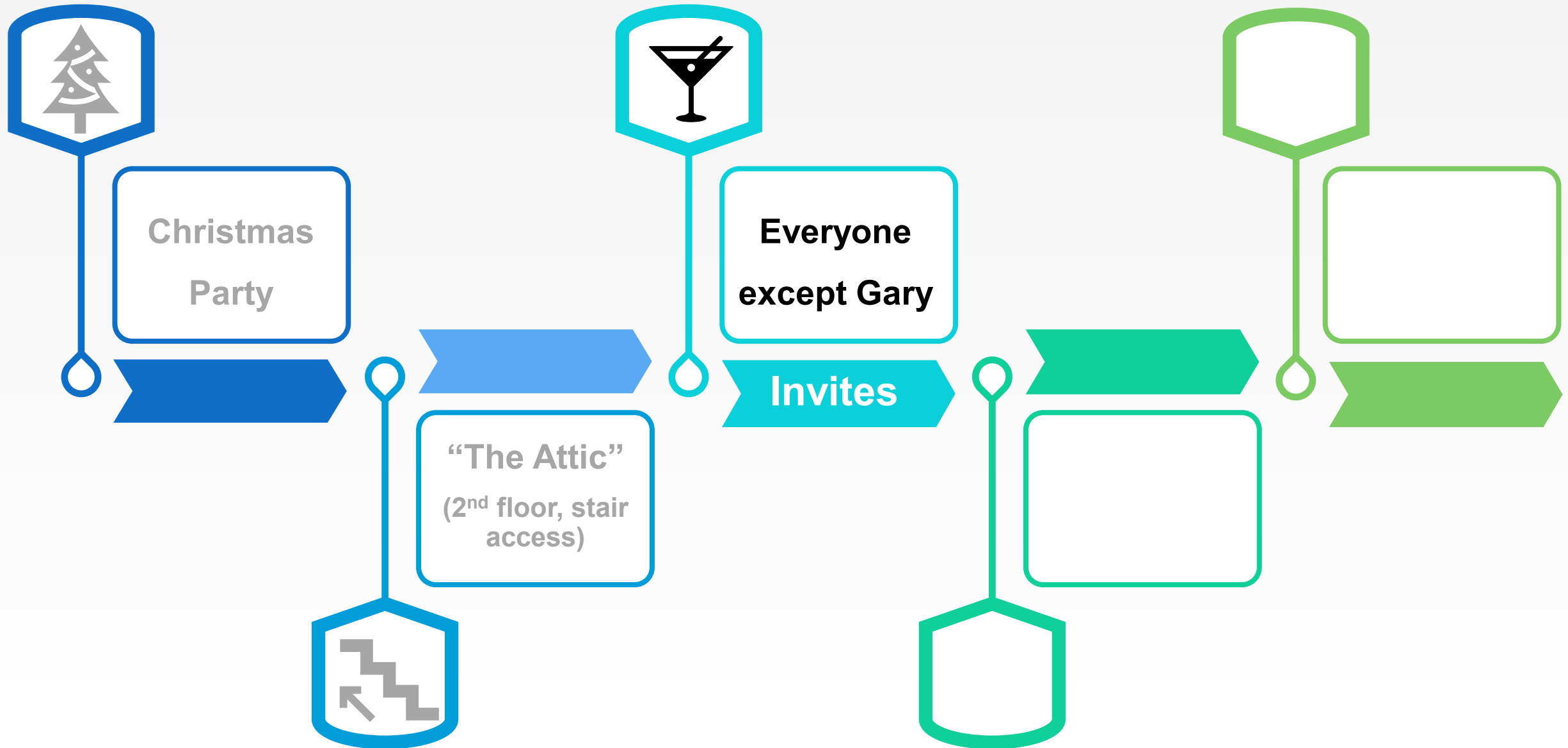
# Annual Office Holiday Party



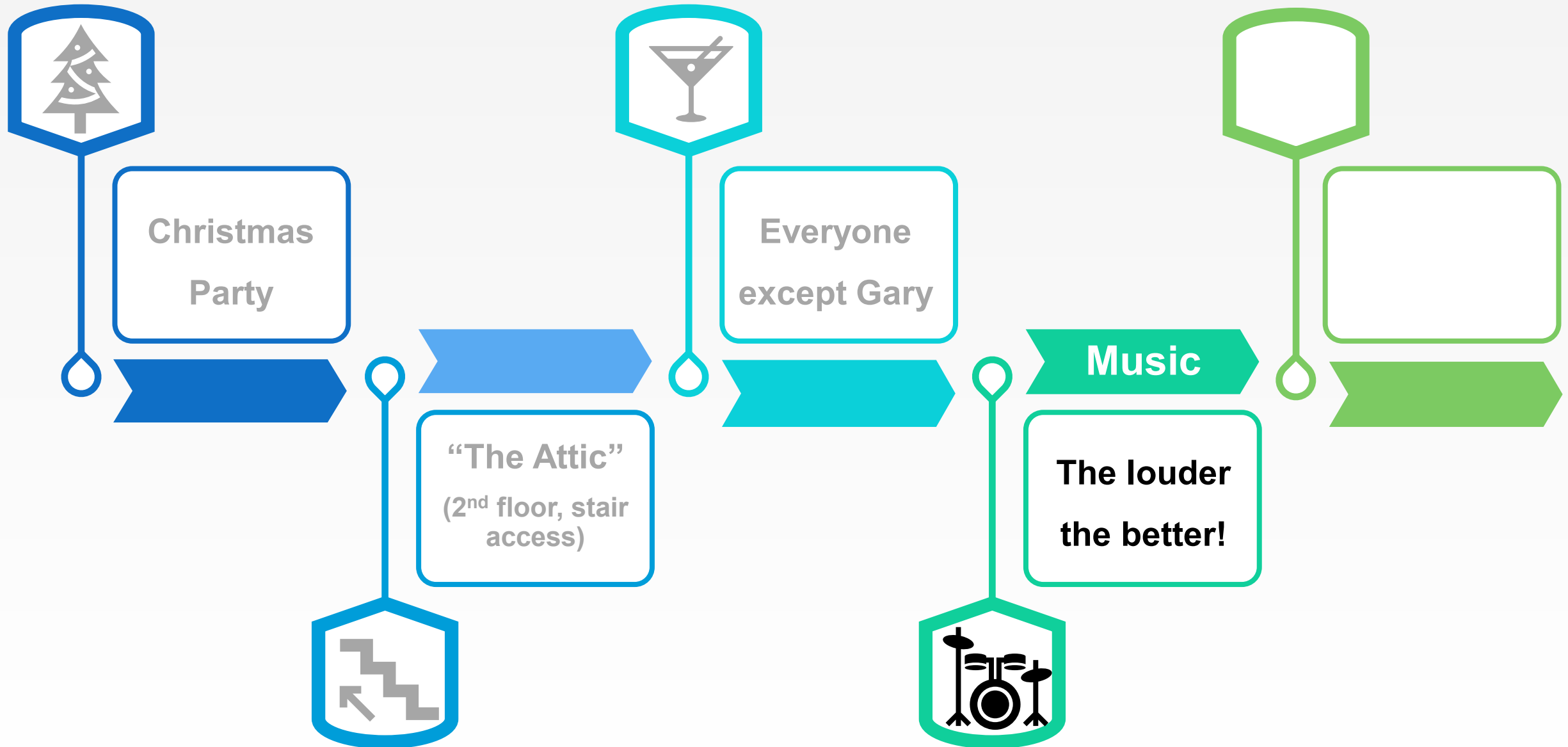
# Annual Office Holiday Party



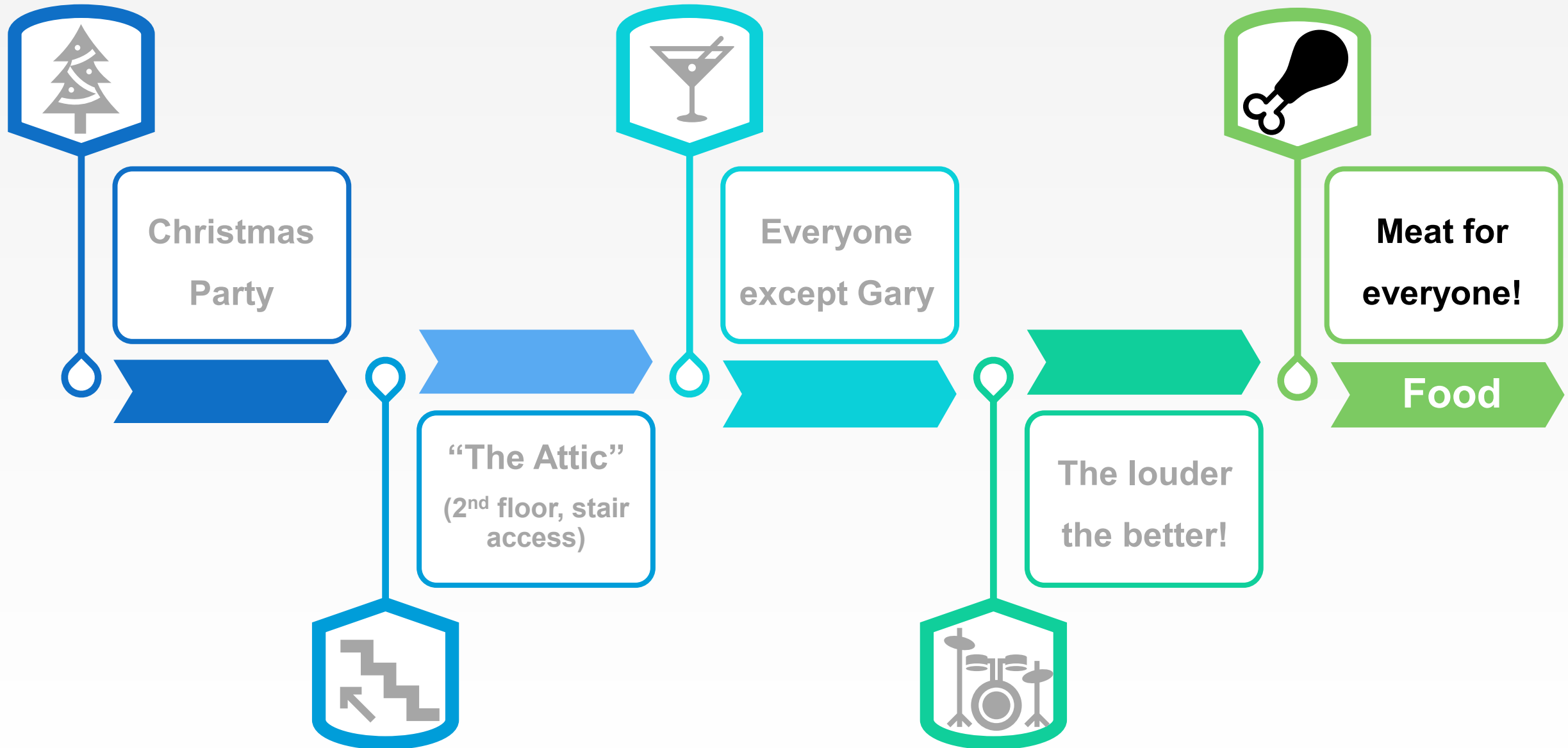
# Annual Office Holiday Party



# Annual Office Holiday Party

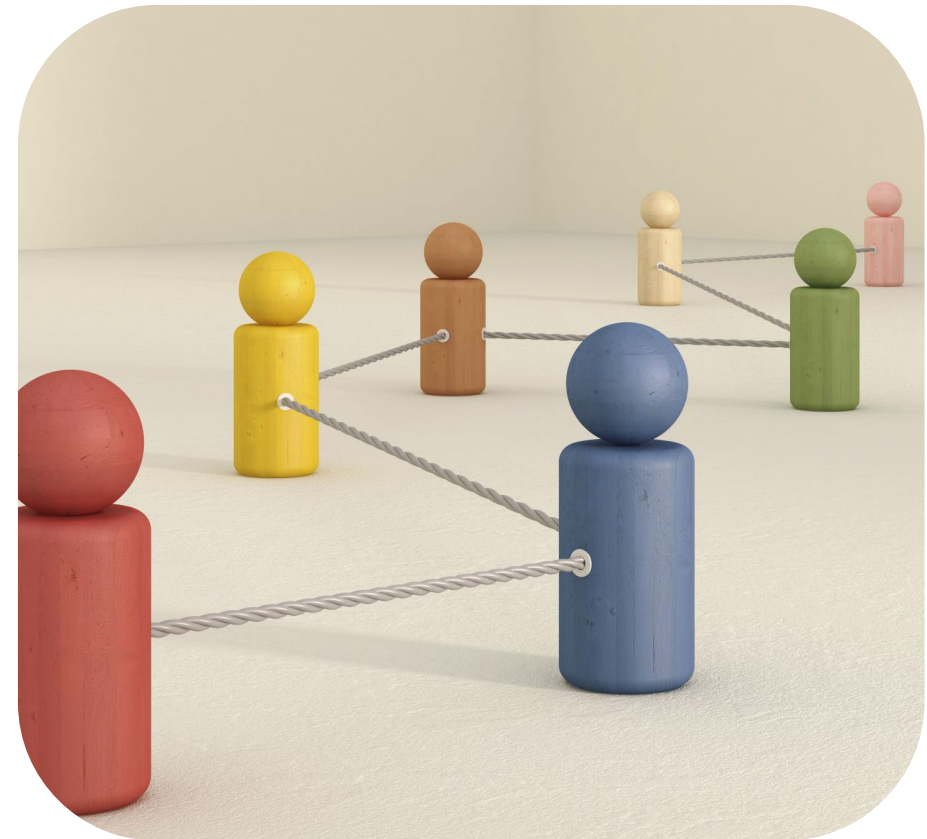


# Annual Office Holiday Party



# Why is Inclusive Design Important?

- Demonstrates Cultural Sensitivity
- Attracts More People
- Provides Equal Access & Opportunity





# How Do I Design in an Inclusive Way?

1

Survey your  
Audience

2

Assess the  
Environment

3

Avoid Bias  
and  
Exclusion

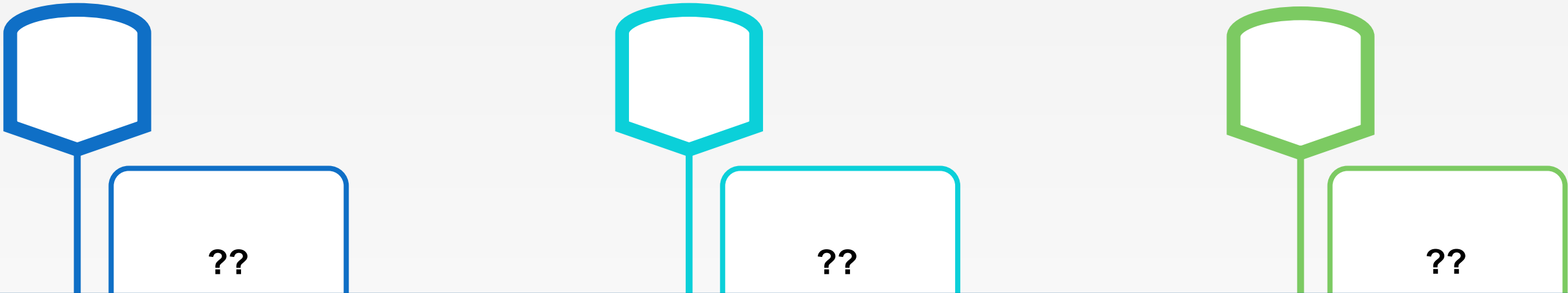
4

Promote  
Welcome and  
Belonging

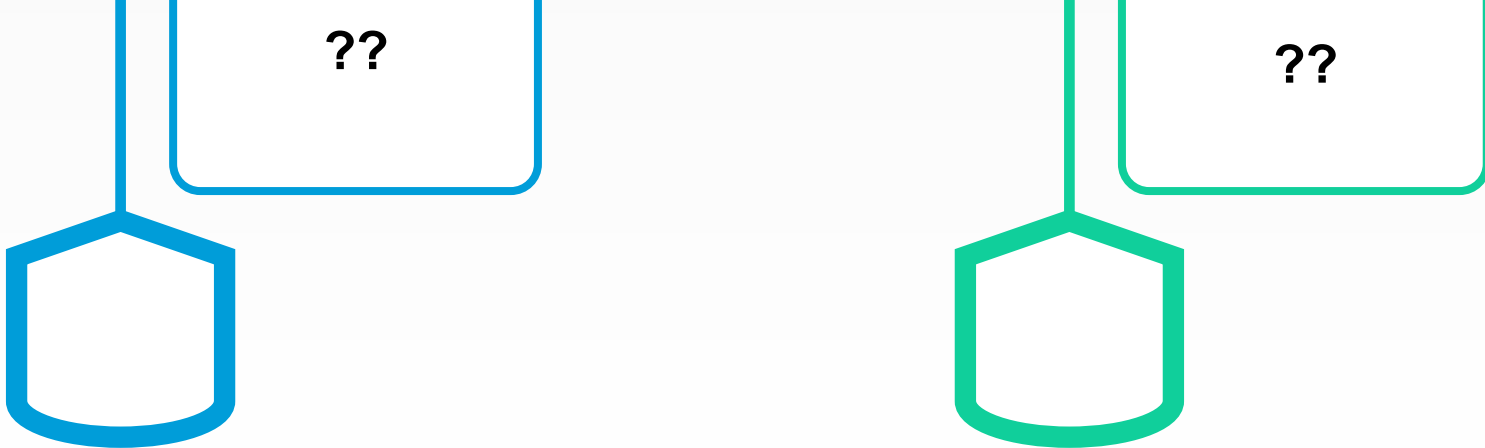
5

Learn  
Refine  
Grow

# Elements to Consider for Inclusive Design



Language, tone, messaging, bias/stereotypes, accessibility, iconography, illustrations, images, etc.



**“Diversity** is like being invited to a party,  
**inclusion** is being asked to dance, and  
**belonging** is dancing like no one’s  
watching.”

Gregory Lewis

Questions?

Comments?

Complaints?

[rubinalwani@gmail.com](mailto:rubinalwani@gmail.com)

