

HUSTLER® COMMERCIAL ZERO-TURN MOWER

SUPER 104

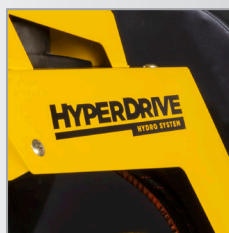
104" WIDTH OF CUT MAKES BIG JOBS EASY

NEW & IMPROVED!



WIDE-AREA MOWER WITH ZERO-TURN MANEUVERABILITY

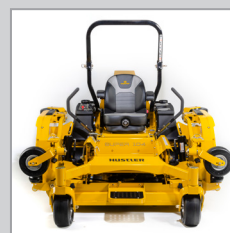
Hustler's Super 104 can easily handle acres of work. Offering a 104" width of cut, zero-turn precision and up to an impressive 11 mph speed, this machine is in a class by itself. Its industrial-grade HyperDrive® Hydro System is engineered to handle thousands of hours of the toughest jobs out there. Transporting is easy as it folds into an 80" transport width. A I3M full suspension seat, welded steel deck and 12 gallon fuel capacity provide comfort, durability and more performance than your average zero-turn mower.



HYPERDRIVE® HYDRO SYSTEM
Features industrial-grade pumps and motors to handle tough jobs and long days in stride.



104" WIDTH OF CUT
Widest and most productive commercial zero-turn available



80" TRANSPORT WIDTH
Fits most trailers making it easy to transport from job-to-job.



LIMITED
LIFETIME WARRANTY
ON THE FRAME

LIMITED WARRANTY
2 YEAR
NO HOUR LIMIT

OR

LIMITED WARRANTY
5 YEAR
500 HOUR

Find A Hustler Dealer
visit www.hustlerturf.com

ENGINE

Manufacturer	Vanguard, Kawasaki
HP	35HP - Kawasaki FX1000 36HP - Vanguard BIG BLOCK™ 37HP - Vanguard BIG BLOCK™ EFI Oil Guard (Per SAE J1995)
Displacement	993 cc / 999cc
Cooling	Air cooled
Air Cleaner	Heavy duty canister
Engine Warranty	5 year (Vanguard only) 3 year (Kawasaki only)

DRIVE SYSTEM

Type	Dual hydrostatic
Pumps	Danfoss DDC20
Wheel Motors	Parker TG0360
Hydraulic Lines	Stainless steel Parker seal loc technology
Reservoir Capacity	3 gallons
Speed	Up to 11 mph
Parking Brakes	Patented automatic

DECKS

Cutting Width	Rear discharge: 104"
Cutting Heights	1" - 5.5"
Deck Lift	Hydraulic powered
Depth	5.5"
Blades	5
Blade Length	1 - 23.86" x 2.50" x .25" CW 1 - 23.86" x 2.50" x .25" CCW 1 - 20.50" x 2.50" x .20" CCW 2 - 20.50" x 2.50" x .20" CW
Spindles	Ductile cast iron with steel shafts and sealed ball bearings
Drive	Electric PTO clutch
Construction	11 ga. welded steel
Spindle Mounts	Reinforced 7 ga. doubler
Impact/Trim Areas	1.5" x .375" steel bar protector

* Number based on 80% efficiency. This rating is to account for actual mowing conditions including overlapping, turning and terrain.

** Specifications are subject to change without notice.

CONSTRUCTION

Frame	1.5" x 3.0" x .188" steel
Front Caster Wheels	Mounted tapered greasable bearings
Front Caster Forks	Fabricated 1/2" steel

GENERAL

Seat	I3M suspension seat with adjustable armrests and back
Fuel Capacity	12 gallons
Cup Holder	Yes
Front Tire	15 x 6.0 - 6
Drive Tire	26 x 12 - 12
Wing Tire	11 x 4 semi-pneumatic

DIMENSIONS

Weight	2500 lbs
Height w/rops up	71.5"
Height w/rops Folded	54"
Length	95.5"
Width	106.1" wings down 80.0" wings up at gauge wheels 72.5" wings up at deck base
Tire Width	60.3"

OPTIONAL ACCESSORIES

Mulch kit
Steering lever extension kit
Light kit
Anti-scalp kit
Flasher kit
Beacon kit
Flex Forks®
Hitch kit

SUPER 104 | AT A GLANCE

- Widest and most productive commercial zero-turn available
- Heavy-duty fabricated frame – unmatched durability
- Exclusive SmoothTrak™ steering – responsive, precise control
- Patented automatic park brake
- Wide area mower with 80" transport width – fits most trailers
- Hydraulic powered deck height adjustment
- 3" suspension seat with recline and adjustable padded armrests
- HyperDrive® industrial hydro system – mow in tough conditions without losing performance



Visit hustlerturf.com
and try our compare products tool!