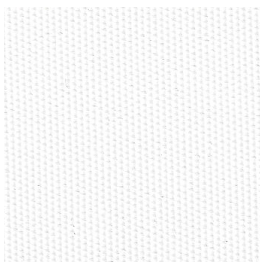
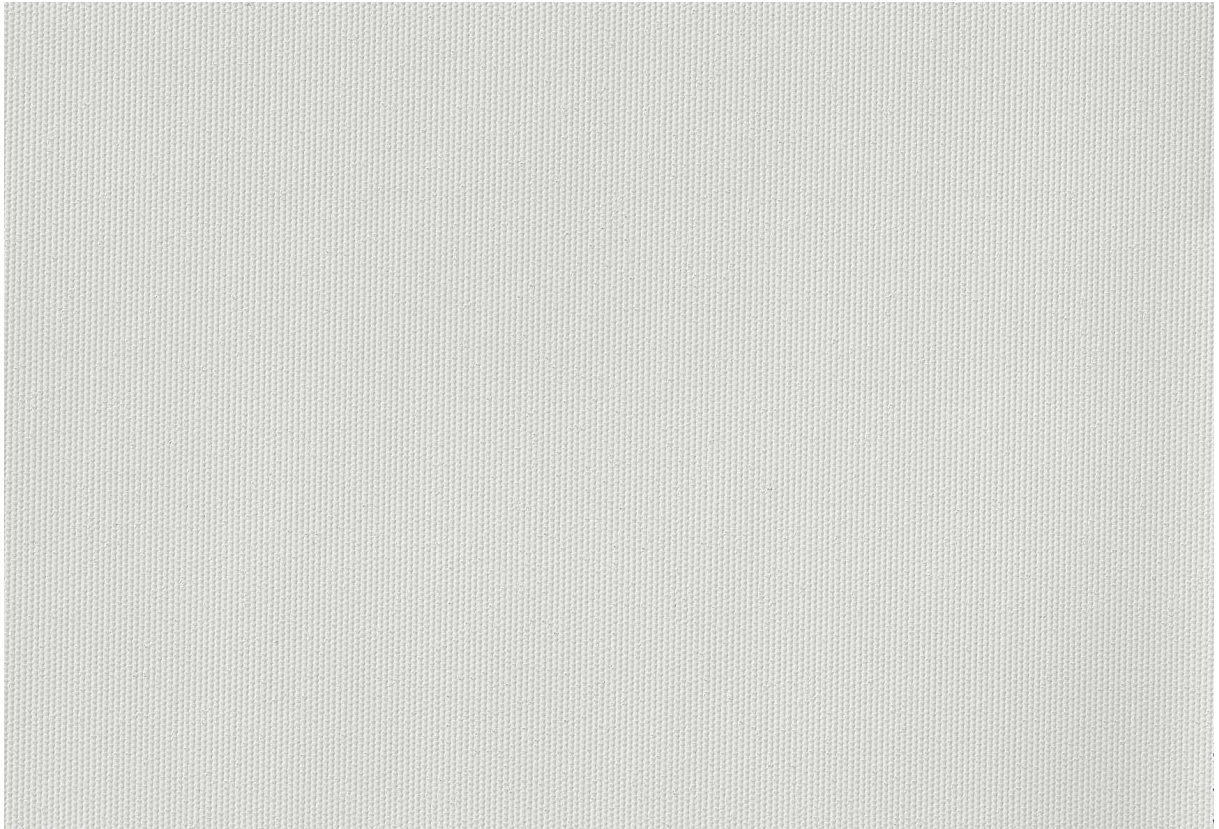
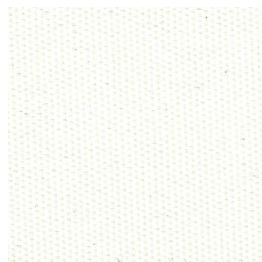


eco**TEX**[™]-Moon 9012

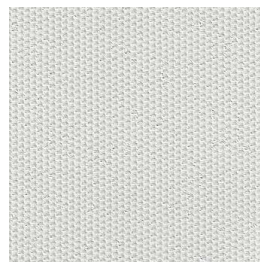
ecoTEX™ -Moon 9012



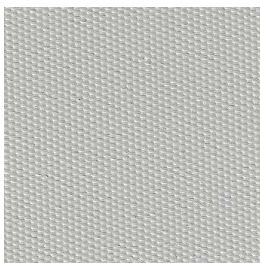
9012-13



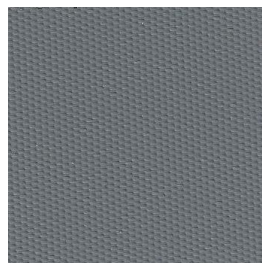
9012-39



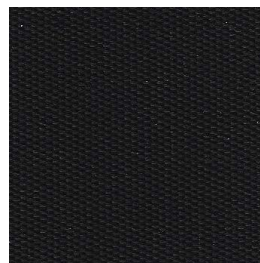
9012-41



9012-42



9012-20



9012-22

Our ecoTEX™ series represents a broad range of energy efficient, solution-based roller shade fabrics offering the industry's highest rate of sun protection performance. Our top priority is the elimination of the impact of textile-generated chemical ingredients on our health and wellbeing. In fact, the ecoTEX™ development team holds a pioneering status in the field. Its stringent testing criteria exponentially exceeds existing legislation, which is why we have terminated many substances known to be harmful, despite being legal. By pushing the limits of technology and being committed to zero tolerance for substrate toxicity, the ecoTEX™ brand is intended to become the optimal choice for commercial and residential shading projects.

ECOTEX HIGHLIGHTS

- Oeko-Tex standard 100 tested
- Oeko-Tex SkinSafe
- No off-gassing
- Free of regulated substances – no PVC, Halogens, Formaldehyde, plasticizers, heavy metals or pentachlorophenol
- Free of non-regulated substances – no pesticides, allergenic dyes, tin-organic compounds, carcinogenic colorants or azo dyes
- Flame resistant to the most stringent international standards
- Low fume emissions in case of fire
- ecoTEX™'s BioPlus version inhibits microbial growth: produced using Trevira CS with BioActive
- Recyclable or safely incinerable while harvesting energy


Moon 9012 – This effective blackout fabric maintains quality at an economical price. Moon 9012 is presented in a classic range of neutral colors with a unique PVC-free composition and is ideal for commercial applications: an excellent option when total light blockage is needed. All colors have an off-white backing.

SPECIFIC FEATURES

- Bacteria and fungi resistance
- Certified to GREENGUARD and GREENGUARD Gold
- Acoustical Value: NRC 0.00 / SAA 0.03 NRC (Noise Reduction Coefficient) and SAA (Sound Absorption Average) tested in accordance with ASTM C423-09a



FABRIC TECHNICAL SPECIFICATIONS

PARAMETERS			FIRE CLASSIFICATION
COMPOSITION	100% Polyester with Acrylic Coating		CL 1 CAN/ULC-S109-03 (large and small scale) NFPA 701 TM #1 & 2
ROLL WIDTH	cm	inches	
	300	118	
FABRIC WEIGHT	g/m ²	oz/yard ²	
	412	12.2	
FABRIC THICKNESS	mm	inches	
	0.40	0.016	
ROLL LENGTH	Lm	Ly	
	27.4	30	
TYPE OF CUT	US/laser		
OPENNESS FACTOR (OF)	100% Blackout		
			

FABRIC THERMAL AND VISUAL SPECIFICATIONS

FABRIC	SOLAR AND OPTICAL PROPERTIES (EN 14501)				SOLAR FACTOR "g _{tot} " (GLASS & BLIND)	
MOON 9012	TS	RS	AS	TV	g _{tot} int C*	g _{tot} int D*
9012-13	0%	68%	32%	0	0.24	0.20
9012-39	0%	68%	32%	0	0.24	0.20
9012-41	0%	68%	32%	0	0.24	0.20
9012-42	0%	68%	32%	0	0.24	0.20
9012-20	0%	68%	32%	0	0.24	0.20
9012-22	0%	68%	32%	0	0.24	0.20
Tests carried out in accordance with the following standards: UNI EN 14501:2006 UNI EN 14500:2008 UNI EN 13363-12008 UNI EN 410:2011 EN 13561:2015	100%			TV Visible light transmission	*Type C Double glazing 4-16-4 with low emissivity coating on the outer surface of the inner pane, space filled with argon.	*Type D Reflective double glazing 4-16-4 with low emissivity soft coating on the inner surface of the outerpane, space filled with argon.