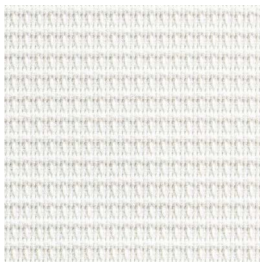
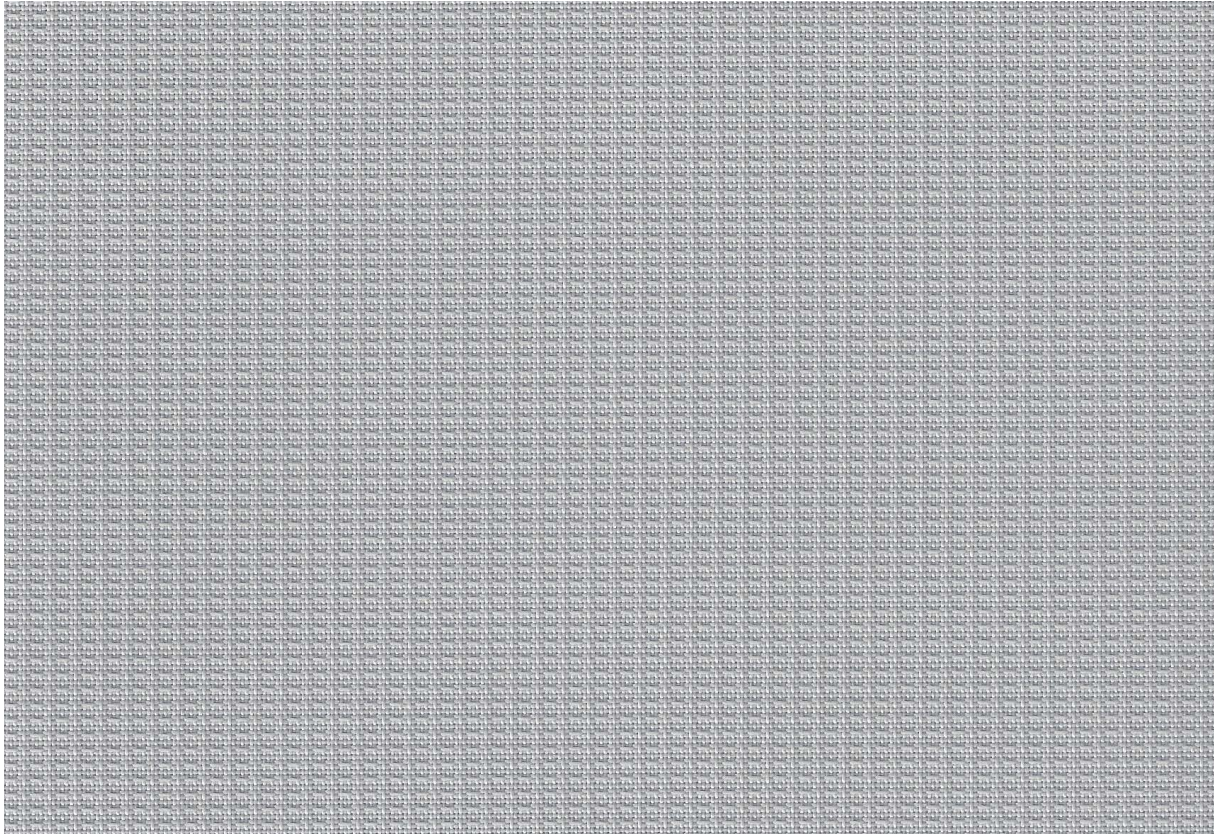


ADVANCED ARCHITECTURAL SHADING

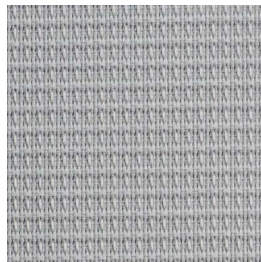
eco**TEX**[™]-Life 9006



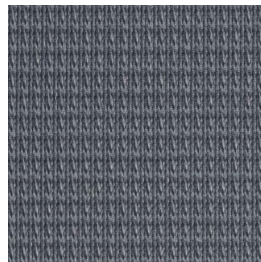
ecoTEXTM-Life 9006



9006-100



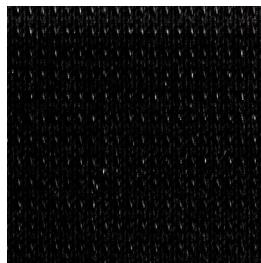
9006-566



9006-567



9006-568



9006-999

Our ecoTEX™ series represents a broad range of energy efficient, solution-based roller shade fabrics offering the industry's highest rate of sun protection performance. Our top priority is the elimination of the impact of textile-generated chemical ingredients on our health and wellbeing. In fact, the ecoTEX™ development team holds a pioneering status in the field. Its stringent testing criteria exponentially exceeds existing legislation, which is why we have terminated many substances known to be harmful, despite being legal. By pushing the limits of technology and being committed to zero tolerance for substrate toxicity, the ecoTEX™ brand is intended to become the optimal choice for commercial and residential shading projects.

ECOTEX HIGHLIGHTS

- Oeko-Tex standard 100 tested
- Oeko-Tex SkinSafe
- No off-gassing
- Free of regulated substances – no PVC, Halogens, Formaldehyde, plasticizers, heavy metals or pentachlorophenol
- Free of non-regulated substances – no pesticides, allergenic dyes, tin-organic compounds, carcinogenic colorants or azo dyes
- Flame resistant to the most stringent international standards
- Low fume emissions in case of fire
- ecoTEX™'s BioPlus version inhibits microbial growth: produced using Trevira CS with BioActive
- Recyclable or safely incinerable while harvesting energy




Life 9006 – Ecologically exemplary fabric offering a 3% weave openness, produced using yarn made up of 100% post-consumer recycled PET bottles: 7 PET bottles contribute to 3 m² of fabric. Its unique weave construction ensures a very high rate of stability and durability. It is recommended for use in demanding commercial applications. Extra LEED points are achievable due to the 100% post-consumer recycled content.

SPECIFIC FEATURES

- Environmentally friendly fabric made using 100% post-consumer recycled PET bottles
- High standard of fire resistance according to international standards
- Saved CO² emissions = 63.4 g/bottle
- Saved Gas consumption = 16.2 cc/bottle
- Saved water consumption = 2694 g/bottle



FABRIC TECHNICAL SPECIFICATIONS

PARAMETERS			FIRE CLASSIFICATION
COMPOSITION	100% Recycled Polyester FR		CL 1 CAN/ULC-S109-03 (large and small scale)
ROLL WIDTH	cm	inches	
	320	126	
FABRIC WEIGHT	g/m²	oz/yard²	
	225	6.6	
FABRIC THICKNESS	mm	inches	
	0.50	0.020	
ROLL LENGTH	Lm	Ly	
	30	32.8	
TYPE OF CUT	US/laser		NFPA 701 TM #1 & 2
OPENNESS FACTOR (OF)	3%		
	  		

FABRIC THERMAL AND VISUAL SPECIFICATIONS

FABRIC	SOLAR AND OPTICAL PROPERTIES (EN 14501)				SOLAR FACTOR “g _{tot} ” (GLASS & BLIND)	
LIFE 9006	TS	RS	AS	TV	g _{tot} int C*	g _{tot} int D*
9006-100	30%	63%	7%	28%	0.37	0.25
9006-566	25%	48%	27%	16%	0.42	0.27
9006-567	20%	36%	44%	7%	0.45	0.28
9006-568	17%	31%	52%	4%	0.47	0.28
9006-999	18%	29%	53%	4%	0.48	0.28
Tests carried out in accordance with the following standards: UNI EN 14501:2006 UNI EN 14500:2008 UNI EN 13363-12008 UNI EN 410:2011 EN 13561:2015	100% TS - Solar Transmission RS - Solar Reflectance AS - Solar Absorptance			TV Visible light transmission	*Type C Double glazing 4-16-4 with low emissivity coating on the outer surface of the inner pane, space filled with argon.	*Type D Reflective double glazing 4-16-4 with low emissivity soft coating on the inner surface of the outerpane, space filled with argon.