

# Maintenance Carbon System Ankle Joints

## Maintenance Carbon System Ankle Joints Using NEURO SWING H<sub>2</sub>O as an Example

The NEURO SWING H<sub>2</sub>O system ankle joint has to be checked for wear and functionality every six months during maintenance. Here, we give you a detailed overview of the work steps to be taken at every maintenance.

You will find further information on the system ankle joint in the instructions for use.

Furthermore, you can find the online tutorial for the joint assembly of the carbon system ankle joints [here](#).

#### **FIOR & GENTZ**

Gesellschaft für Entwicklung und Vertrieb  
von orthopädietechnischen Systemen mbH

Dorette-von-Stern-Straße 5  
21337 Lüneburg (Germany)

☎ +49 4131 24445-0  
☎ +49 4131 24445-57

✉ info@fior-gentz.de  
🌐 www.fior-gentz.com



### Step 1/11



You can find information on system components that have to be checked particularly carefully during maintenance in the instructions for use under “Maintenance”.



Check if the system joint moves freely. Bring the system joint in plantar flexion/dorsiflexion.

If the system joint does not move freely, mount the next thinner sliding washer or clean the system joint thoroughly.

*Note: At a bilateral orthosis, only check one system joint at a time.*



Demount the spring units in order to examine it. Check if the system joint moves without lateral play.



Disassemble the system joint completely. Clean all component parts and check them carefully.

**FIOR & GENTZ**

Gesellschaft für Entwicklung und Vertrieb  
von orthopädietechnischen Systemen mbH

Dorette-von-Stern-Straße 5  
21337 Lüneburg (Germany)

☎ +49 4131 24445-0  
☎ +49 4131 24445-57

✉ info@fior-gentz.de  
🌐 www.fior-gentz.com

**FIOR & GENTZ**  
ORTHOPÄDIETECHNIK MIT SYSTEM



Hold the tibial shell and try to move the foot shell in pronation-supination direction.

If there is lateral play, this can indicate loosened screws and/or worn out sliding washers.





- damaged sliding washer
- worn out bearing nut
- worn out sliding bushing
- worn out screw

Replace component parts if they are worn out.



Check if there is play around the axis. If there is play, the bearing nut and the sliding bushing should be replaced if necessary.





Replace the sliding bushing if it is worn out.

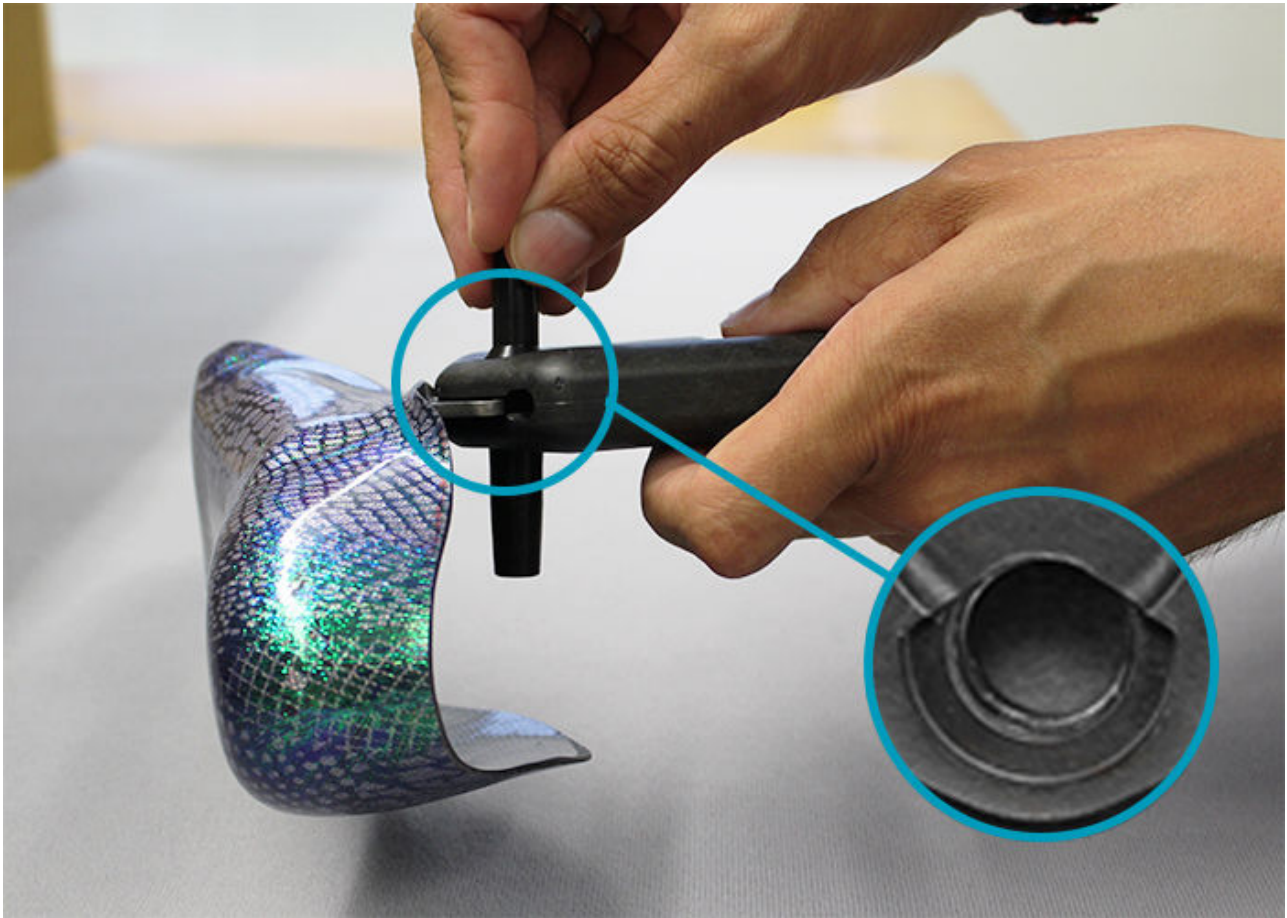


Replace the spring unit in case of loud noise generation and/or a reduced spring force or a limited range of motion.



Check the spring unit's O-ring. Replace the O-ring if it is worn out.





Note the online tutorial for the joint assembly of the carbon system ankle joints in order to reassemble the system joint.

**FIOR & GENTZ**

Gesellschaft für Entwicklung und Vertrieb  
von orthopädietechnischen Systemen mbH

Dorette-von-Stern-Straße 5  
21337 Lüneburg (Germany)

☎ +49 4131 24445-0  
☎ +49 4131 24445-57

✉ info@fior-gentz.de  
🌐 www.fior-gentz.com

