



# MATERIALS CATALOGUE 2021

MASSONS HEALTHCARE MATERIALS CATALOGUE 2021 EDITION

---

## ABOUT MASSONS

The Masson surname has been synonymous with the Orthotics and Prosthetics industry for over 100 years. The founder of George W. Masson & Sons, George William Masson, was an apprentice splint and surgical instrument maker in the early 1900s in London, England.

1912

George emigrated to Australia, taking up employment in Sydney with a local splint and surgical instrument manufacturing company.

1916

George suffered war injuries from his voluntary service in Gallipoli, Turkey. When he returned to Australia, he was asked to join the Commonwealth Limb Factory in Melbourne.

1930

Lord Nuffield gave a grant to the Melbourne Children's Hospital to build an orthopaedic and prosthetic appliance workshop, which George was invited to supervise.

1937

George continued to supervise the workshop through the polio epidemic and war years.

1946

Upon his eldest son Richard's return from the war, George established the company George W. Masson & Sons. The company manufactured orthopaedic and prosthetic devices for hospitals across Australia.

1975

The driving force of the business evolved from device manufacture to product distribution.

1995

With a vision to provide patients with high quality orthotic and prosthetic services, Anton Karak and Kris Karak formed Orthotics Australia. Over the years, Orthotics Australia grew from a reputable clinical practice to a leader in the use of CAD CAM technology for foot orthotics.

2003

George W. Masson & Sons was acquired by Orthotics Australia. The company changed its name to Massons Healthcare.

2015

Massons Healthcare outgrew its old locations and opened a new headquarters in Knoxfield, Victoria. The company began to sign agreements with international brands to serve as their exclusive distributor for the Asia-Pacific.

2021

Today, Massons Healthcare is an established and growing business ran by Anton and Kris Karak, servicing the majority of prosthetic and orthotic facilities around Australia and many more in the Asia-Pacific. Anton and Kris attribute their ongoing success to their vision to be worldwide industry leaders in technology and product supply with the highest levels of customer service and patient care.

## TABLE OF CONTENTS

**LAMINATING & CASTING SUPPLIES..... PG 4**

**TRANSFER PAPER FABRICS & TATTOOS..... P 34**

**EVA FOAMS + PADDING & COVERING MATERIAL..... P 52**

**PLASTICS..... P 68**

**STRAPS BUCKLES PADS & ACCESSORIES..... P 74**

**FABRICATION & TOOLS..... P 106**



Massons Healthcare Materials Catalogue 2021

## LAMINATING & CASTING SUPPLIES

Massons Healthcare offers a diverse range of market leading materials & equipment.

Our laminating and casting supplies are sourced through internationally renowned manufacturers and are used everyday throughout our own central manufacturing plant.

With Massons Healthcare you can be confident that you are buying a top quality product with amazing support & technical knowledge.

We are happy to help with any support or technical questions regarding our products.

Call Us: +61(3) 9898 0011  
[info@massonshealthcare.com.au](mailto:info@massonshealthcare.com.au)  
 Unit 15/111 Lewis Road, Knoxfield 3180 VIC Australia  
 Mon-Fri: 9:00am to 5:00pm

\*\*More products available upon request - see pricelist for full range\*\*





Massons Healthcare Materials Catalogue 2021

# LAMINATING & CASTING SUPPLIES



## C-FORM CASTING TAPE

- Conforms nicely to complex shapes
- Allows for the practitioner to produce a more conforming cast
  - No plaster mess
  - Ample time to work with before it hardens
  - No need for special glove, a regular casting glove is fine to use
  - Resin does not stick to the glove like typical fibre glass casting tape
  - Very rigid cast once finished

Code	Description
STG-4013-2	C-Form Casting Tape - White, 2" x 4 Yd. Per Roll (10 rolls per box)
STG-4013-3	C-Form Casting Tape - White, 3" x 4 Yd. Per Roll (10 rolls per box)
STG-4013-4	C-Form Casting Tape - White, 4" x 4 Yd. Per Roll (10 rolls per box)
STG-4013-5	C-Form Casting Tape - White, 5" x 4 Yd. Per Roll (10 rolls per box)



## R-FORM FIBREGLASS CAST TAPE

- Finished cast is strong and durable
- Radiolucent - superb to see through by X-ray
  - Available in white only

Code	Description
STG-4015-2	R-Form Casting Tape, Fibreglass, W 2" x L 4yd, White (10 rolls per box)
STG-4015-3	R-Form Casting Tape, Fibreglass, W 3" x L 4yd, White (10 rolls per box)
STG-4015-4	R-Form Casting Tape, Fibreglass, W 4" x L 4yd, White (10 rolls per box)
STG-4015-5	R-Form Casting Tape, Fibreglass, W 5" x L 4yd, White (10 rolls per box)

Massons Healthcare Materials Catalogue 2021

# LAMINATING & CASTING SUPPLIES



## EZ CUTTER

- The safest utility cutter on the market today
- Reduce workplace lacerations
  - Provides a recessed blade which eliminates injuries
  - Perfect for cutting through C-FORM AFO Casts
  - Cut at slight angle

Code	Description
STG-4040-ST	EZ CUTTER - Standard
STG-4040-SM	EZ CUTTER - Small



## MARKING PENCILS

- Indelible pencil for marking wet plaster casts / shell casts.  
Chinagraph pencils for marking hard surfaces.

Code	Description
LT-PENI	Blue Indelible Pencil x1
LT-PENI/12	Blue Indelible Pencil x12
LT-PENCBLU	Blue Chinagraph Pencil x1
LT-PENCBLU/12	Blue Chinagraph Pencil x12
LT-PENCWHT	White Chinagraph Pencil x1
LT-PENCWHT/12	White Chinagraph Pencil x12
LT-PENC	Black Chinagraph Pencil x1
LT-PENC/12	Black Chinagraph Pencil x12
LT-PENCR	Red Chinagraph Pencil x1
LT-PENCR/12	Red Chinagraph Pencil x12
LT-PENCY	Yellow Chinagraph Pencil x1
LT-PENCY/12	Yellow Chinagraph Pencil x12

Massons Healthcare Materials Catalogue 2021

# LAMINATING & CASTING SUPPLIES



## CLINGFILM

General masking for filling/protection.

Code	Description
LT-CFILM	30cm x 100m
LT-CFILM/S	10cm x 150m

## E-CAST

Used for checking the joint angles during making the negative cast



Code	Description
FG-WE3400	e-Cast Operator device and sensors
FG-ET3400-T	e-Cast Operator device
FG-ET3400-WE	e-Cast sensors for negative casting. 3 sensors (G,Y,R)
FG-ET3410-WE	e-Cast sensor, thigh area Red
FG-ET3420-WE	e-Cast sensor, lower leg area Yellow
FG-ET3430-WE	e-Cast sensor, foot area Green
FG-WZ2067-T08	Screw Driver, Hexagon Socket T8 x 60mm
FG-ET0830-2450	Battery, coin cell e. g. for e-Cast sensors
FG-ET0708	USB power adapter Black
FG-KL4200	Glue dots for e-Cast Double-sided adhesive
FG-KL4601	28 washers for e-Cast Self-adhesive

Massons Healthcare Materials Catalogue 2021

# LAMINATING & CASTING SUPPLIES



## H-CAST

Used to determine a heel height/leg length discrepancy.

Code	Description
FG-WE3200	h-Cast, POM, Black
FG-WE3200-1/1	h-Cast, base plate with tenons
FG-WE3200-1/2	h-Cast, plate with tenons, 20mm thick
FG-WE3200-1/3	h-Cast, plate with tenons, 10mm thick
FG-WE3200-1/4	h-Cast, plate with tenons, 5mm thick
FG-WE3200-1/5	h-Cast, cover plate, 5mm thick; chamfered

## FOAM IMPRESSION BOXES

Medical foot impression foam (38 mm or 50 mm)

Code	Description
PER-SH19	38mm Foam Impression Boxes, Full Carton 50 Boxes
PER-SH17	50mm Foam Impression Boxes, Full Carton 25 Boxes



## LAMINATING & CASTING SUPPLIES

### URBA-FAST STOCKINETTE SINGLE STRETCH

URBA-FAST Single Stretch is an all purpose, circular-knitted stockinette with a high level of lateral elasticity. The stockinette has no longitudinal stretch. It adapts very well to most anatomical shapes.



Code	Description
TF-58.500.010.00	Single Stretch / 10m x 3.5cm / Small extremities
TF-58.500.020.00	Single Stretch / 10m x 6cm / Medium extremities
TF-58.500.030.00	Single Stretch / 10m x 9cm / Large extremities
TF-58.500.040.00	Single Stretch / 10m x 13cm / Large extremities and small torsos
TF-58.500.050.00	Single Stretch / 10m x 18cm / Large torsos

### URBA-FAST STOCKINETTE DOUBLE STRETCH

URBA-FAST Double Stretch is a circular-knitted stockinette with a high level of both longitudinal and lateral stretch. Due to its exceptional elasticity, URBA FAST Double Stretch can be used for a multitude of applications, and perfectly adapts to most anatomical shapes.



Code	Description
TF-58.501.010.00	Double Stretch / 10m x 3.5cm / Small extremities
TF-58.501.020.00	Double Stretch / 10m x 6cm / Medium extremities
TF-58.501.030.00	Double Stretch / 10m x 9cm / Large extremities
TF-58.501.040.00	Double Stretch / 10m x 13cm / Large extremities and small torsos

## LAMINATING & CASTING SUPPLIES

### STOCKINGS, STOCKINETTE & RIBBED

These fine mesh stockings and stockinette are used over casts etc to act as a wick to remove the air when vacuuming thermoplastics and foams etc.

They give a smooth finish to the inside of the plastic. Long white for KAFO's etc and Short white for AFO's etc.

Black stockings are used as an outer layer for black sockets when using black pigment to give a "true" black finish or under a carbon fibre braid finish to cover any white showing through. Ribbed Cotton & Cotton Stockinette is used as a wick under thermoplastics where surface finish isn't too important.

Other sizes / colours available on request.



Code	Description
LT-SSW20	Short / White / 20 Denier / 0.5m / 100x
LT-SLW20	Long / White / 20 Denier / 1.2m / 50x
LT-SLW30	Long / White / 30 Denier / 1.2m / 50x
LT-SLBLK20	Long / Black / 20 Denier / 1.4m / 50x

Code	Description
LT-RIBBED5	5cm x 25m / 1 roll
LT-RIBBED7.5	7.5cm x 25m / 1 roll
LT-RIBBED10	10cm x 25m / 1 roll
LT-RIBBED15	15cm x 25m / 1 roll
LT-RIBBED20	20cm x 25m / 1 roll
LT-RIBBED25	25cm x 25m / 1 roll
LT-RIBBED30	30cm x 25m / 1 roll
LT-COTTON10	Bleached / 10cm x 10m / 1 roll
LT-COTTON15	Bleached / 10cm x 10m / 1 roll



## LAMINATING & CASTING SUPPLIES

### FEATHERSTRETCH STOCKINETTE

FeatherStretch is a very fine, thin nylon material. It is exceptionally elastic and perfectly follows the shape of the model.

FeatherStretch can be used both as a bottom layer for vacuum forming and as a top layer for lamination, in order to create an especially fine surface.

FeatherStretch is available in black and white.



Code	Description
TF-PA.0013400	475% Elasticity / BK - AFO - KAFO / 23m x 6cm / Black
TF-PA.0013600	475% Elasticity / BK - AFO - KAFO / 23m x 6cm / White

### FEATHERSTRETCH STOCKINETTE, EXTRA

Elasticity: 750%, suitable for AK Knee disarticulation & torso.



Code	Description
TF-PA.0013500	750% Elasticity / AK - KD - Torso / 23m x 8cm / Black
TF-PA.0013700	750% Elasticity / AK - KD - Torso / 23m x 8cm / White

## LAMINATING & CASTING SUPPLIES

### PERLON STOCKINETTE

Commonly used as a first layer and last layer of a standard lamination as it gives a finer finish.



Code	Description
LT-PERLON6	Perlon "Nylon" - 6cm x 55m / 1kg roll
LT-PERLON8	Perlon "Nylon" - 8cm x 42m / 1kg roll
LT-PERLON10	Perlon "Nylon" - 10cm x 37m / 1kg roll
LT-PERLON12	Perlon "Nylon" - 12cm x 33m / 1kg roll
LT-PERLON15	Perlon "Nylon" - 15cm x 27m / 1kg roll
LT-PERLON20	Perlon "Nylon" - 20cm x 20m / 1kg roll
LT-PERLON25	Perlon "Nylon" - 25cm x 15.5m / 1kg roll
LT-PERLON30	Perlon "Nylon" - 30cm x 12m / 1kg roll

### BLACK NYLON STOCKINETTE

Commonly used as a cosmetic covering, but also use as a first and outer layer on a lamination to add colour without pigments.



Code	Description
LT-NYLON6BLK	Black Nylon - 6cm x 86m / 1kg roll
LT-NYLON9BLK	Black Nylon - 9cm x 65m / 1kg roll
LT-NYLON12BLK	Black Nylon - 12cm x 41m / 1kg roll
LT-NYLON15BLK	Black Nylon - 15cm x 32m / 1kg roll
LT-NYLON20BLK	Black Nylon - 20cm x 24m / 1kg roll

Massons Healthcare Materials Catalogue 2021

# LAMINATING & CASTING SUPPLIES



## SUPERFLEX STOCKINETTE

Introducing the newest addition to our full line of stockinette products. Superflex is made of cotton and Lycra to create amazing S-T-R-E-T-C-H.

Code	Description
CPI-CUS	Superflex Stockinette

Massons Healthcare Materials Catalogue 2021

# LAMINATING & CASTING SUPPLIES



## PVA BAGS

Use: For isolating plaster casts / other materials when laminating over.

Code	Description
LT-PVA4	4" 10x100x5cm / 20x
LT-PVA6	6" 15x100x5cm / 20x
LT-PVA8	8" 20x100x5cm / 20x
LT-PVA10	10" 25x100x5cm / 20x
LT-PVA12	12" 30x100x5cm / 20x
LT-PVA14	14" 35x100x5cm / 20x
LT-PVA16	16" 40x100x5cm / 20x
LT-PVA20	20" 20x100x5cm / 10x
LT-PVA10/130	10" 25x130x5cm / 10x
LT-PVA12/130	LONG 12" 30x130x5cm / 10x
LT-PVA60X11X4	LONG 4" 11x60x5cm / 10x
LT-PVA71X19X5	SHORT 7.5" 19x71x5cm / 10x
LT-PVA71X27X5	11" 27x71x5cm / 10x

## CLOSED END PVA BAGS

The inner bag is sealed neatly and saves time.



Code	Description
LT-PVA6CE2	6" / closed at 2" / 5x
LT-PVA6CE3	6" / closed at 3" / 5x
LT-PVA8CE2	8" / closed at 2" / 5x
LT-PVA8CE3	8" / closed at 3" / 5x
LT-PVA10CE2	10" / closed at 2" / 5x
LT-PVA10CE3	10" / closed at 3" / 5x
LT-PVA12CE2	12" / closed at 2" / 5x
LT-PVA12CE3	12" / closed at 3" / 5x
LT-PVA14CE2	14" / closed at 2" / 5x
LT-PVA14CE3	14" / closed at 3" / 5x



## LAMINATING & CASTING SUPPLIES



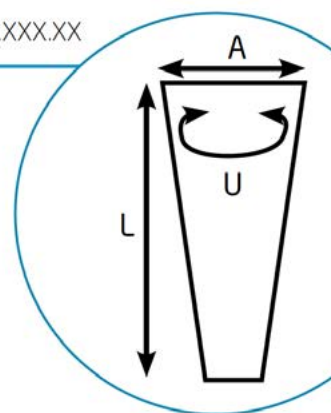
### PVA ROLL

Use: For producing custom PVA bags or for pulling over a cast in sheet form.

Code	Description
LT-PVAROLL	23m x 102cm PVA film



70.28X.XXX.XX



### PVA FILM SLEEVES OPEN BOTH ENDS

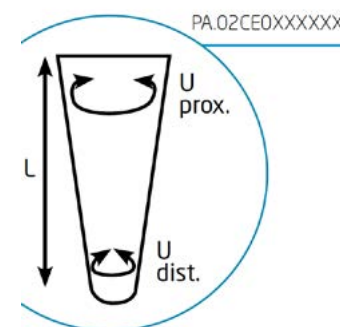
Classic PVA film sleeves of very high quality. Available in 3 different lengths and 2 thicknesses. The shorter sleeves come in the very versatile thickness of 0.08 mm. The longer sleeves, which can also be used to laminate e.g. leg orthoses, are 0.1 mm thick. The slimmer sleeves are great for building e.g. pediatric leg orthoses.

Code	Description
TF-70.287.077.20	77x20cm / 0.08mm / 40cm C / x10
TF-70.287.077.28	77x28cm / 0.08mm / 55cm C / x10

Code	Description
TF-70.288.100.10	100x10cm / 0.1mm / 20cm C / x10
TF-70.288.100.13	100x13cm / 0.1mm / 25cm C / x10
TF-70.288.100.15	100x15cm / 0.1mm / 30cm C / x10
TF-70.288.100.18	100x18cm / 0.1mm / 35cm C / x10
TF-70.288.100.20	100x20cm / 0.1mm / 40cm C / x10
TF-70.288.100.28	100x28cm / 0.1mm / 55cm C / x10
TF-70.288.100.36	100x36cm / 0.1mm / 70cm C / x10

Code	Description
TF-70.288.130.18	130x18cm / 0.1mm / 35cm C / x10
TF-70.288.130.23	130x23cm / 0.1mm / 45cm C / x10
TF-70.288.130.26	130x26cm / 0.1mm / 50cm C / x10
TF-70.288.130.28	130x28cm / 0.1mm / 55cm C / x10

## LAMINATING & CASTING SUPPLIES



### PVA BAG CLOSED ENDS

These PVA bags with closed distal ends are a true innovation.

The PVA bag can be used directly on the model. It is not necessary to tie the distal end of the bag.

This results in a very smooth surface on the inside of the socket's distal end.

The PVA bags come in 21 different sizes.

Additionally, a starter kit that contains the most commonly used sizes is also available.

Code	L x B x C/mm	Proximal	Distal	Thickness	Qty
TF-PA.02CE0060300	700 x 150 x 80	300	160	0.08	5
TF-PA.02CE0080300	700 x 200 x 80	400	160	0.08	5
TF-PA.02CE0080500	700 x 200 x 130	400	260	0.08	5
TF-PA.02CE0100300	700 x 250 x 80	500	160	0.08	5
TF-PA.02CE0100500	700 x 250 x 130	500	260	0.08	5
TP-PA.02CE0100700	700 x 250 x 180	500	360	0.08	5
TF-PA.02CE0120300	700 x 300 x 80	600	160	0.08	5
TF-PA.02CE0120500	700 x 300 x 130	600	260	0.08	5
TF-PA.02CE0120700	700 x 300 x 180	600	360	0.08	5
TF-PA.02CE0140300	700 x 350 x 80	700	160	0.08	5
TF-PA.02CE0140500	700 x 350 x 130	700	260	0.08	5
TF-PA.02CE0140700	700 x 350 x 180	700	360	0.08	5

## LAMINATING & CASTING SUPPLIES



### LATEX CONE

Latex Cone Use: These are used over a plaster cast or PU foam to isolate them and give a smooth finish inside a thermoplastic socket or laminated socket.

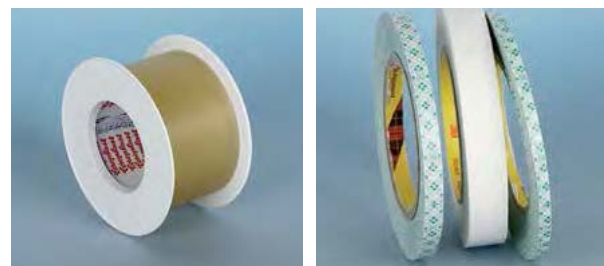
Code	Description
LT-LCS	20cm (open end) x 57cm / 10x
LT-LCM	25cm (open end) x 57cm / 10x
LT-LCL	30cm (open end) x 57cm / 10x



### LAMINATION TAPE

Polyethylene Tape - Sealing PVA bags etc  
Coroplast Tape - Sealing PVA bag etc  
Double Faced PVC - Positioning carbon and glass fabric and sealing PVC sheeting etc

Code	Description
LT-TPE	3m Polythene tape / 25mm x 33m / 1 roll
LT-TCOR	Coroplast PVC tape 50mm x 25m / 1 roll
LT-TDF	Double faced Acrylic tape / 19mm x 55m / 1 roll
LT-TDF/6	Double faced Acrylic tape / 6mm x 55m / 1 roll
LT-TDF/9	Double faced Acrylic tape / 9mm x 55m / 1 roll



### PVC CAUCASIAN TAPE

Code	Description
LT-TSKIN	25mm x 5m / 6x rolls
LT-TSKINDP	25mm x 5m / 6x rolls

## LAMINATING & CASTING SUPPLIES



### PLASTIC SEALANT

Can be used like plasticine for sealing, filling and protecting during the lamination process but can be removed cleanly in one piece.

Code	Description
LT-PSEAL	15m / 1x roll
LT-PCINE	500g / 1x

### VACUUM SEALING TAPE

This vacuum sealing tape consists of viscoplastic material in the shape of a tape. It can be used for a wide range of sealing purposes. It is typically used for airtight connections between plastic materials or plastic films in order to create a vacuum.



Code	Description
TF-70.222.012.15	15m x 12mm x 3mm



LAMINATING & CASTING SUPPLIES



NSP BRAID

NSP™ is a unique fibre that is lighter, stronger, offers ½ the stiffness and 10X the impact resistance than carbon. The stiffness can be regulated by fibre orientation to be equal to carbon. NSP™ can be stiff or flexible depending upon practitioner preference. NSP™ wets out fast because of its high fibre interface and low void content. Translated the resin sticks and air does not get trapped easily. NSP™ does not create any flying fibres and therefore it ELIMINATES THE ITCH factor which all practitioners and technicians love.

- Provides great fatigue strength for the socket
- Tested in socket form under ISO guidelines for patients up to 500 lbs
- Available in 3, 4, 5, 6, 8 and 10 inch width and 10 and 50 feet length

Code	Description
STG-4011-3.10	NSP Braid - 3" x 10 feet
STG-4011-3.50	NSP Braid - 3" x 50 feet
STG-4011-4.10	NSP Braid - 4" x 10 feet
STG-4011-4.50	NSP Braid - 4" x 50 feet
STG-4011-5.10	NSP Braid - 5" x 10 feet
STG-4011-5.50	NSP Braid - 5" x 50 feet
STG-4011-6.10	NSP Braid - 6" x 10 feet
STG-4011-6.50	NSP Braid - 6" x 50 feet
STG-4011-8.10	NSP Braid - 8" x 10 feet
STG-4011-8.50	NSP Braid - 8" x 50 feet
STG-4011-10.10	NSP Braid - 10" x 10 feet
STG-4011-10.50	NSP Braid - 10" x 50 feet

LAMINATING & CASTING SUPPLIES



PARALEX

PARALEX blends Carbon and NSP™ to create a new and dynamic hybrid material.

Code	Description
STG-4017-3.10	Paralex Tube - 3" x 10 feet
STG-4017-3.50	Paralex Tube - 3" x 50 feet
STG-4017-4.10	Paralex Tube - 4" x 10 feet
STG-4017-4.50	Paralex Tube - 4" x 50 feet
STG-4017-5.10	Paralex Tube - 5" x 10 feet
STG-4017-5.50	Paralex Tube - 5" x 50 feet
STG-4017-6.10	Paralex Tube - 6" x 10 feet
STG-4017-6.50	Paralex Tube - 6" x 50 feet
STG-4017-8.10	Paralex Tube - 8" x 10 feet
STG-4017-8.50	Paralex Tube - 8" x 50 feet
STG-4017-10.10	Paralex Tube -10" x 10 feet
STG-4017-10.50	Paralex Tube -10" x 50 feet



ULTRA6 CARBON TAPE

New lighter weight uni-directional carbon tape for optimum strength.

Code	Description
STG-4018-1.30	Uni Directional Carbon Tape, 1" x 30 feet
STG-4018-3.30	Uni Directional Carbon Tape, 3" x 30 feet
STG-4018-3.100	Uni Directional Carbon Tape, 3" x 100 feet

Massons Healthcare Materials Catalogue 2021

# LAMINATING & CASTING SUPPLIES



## CARBON BRAID

- 12K strand count
- Designed for improved polyester and fibre interface
  - Decreased fraying (less dust)

Code	Description
STG-4016-3.10	CARBON Braid, 3"x10 feet
STG-4016-3.50	CARBON Braid, 3"x50 feet
STG-4016-4.10	CARBON Braid, 4"x10 feet
STG-4016-4.50	CARBON Braid, 4"x50 feet
STG-4016-5.10	CARBON Braid, 5"x10 feet
STG-4016-5.50	CARBON Braid, 5"x50 feet
STG-4016-6.10	CARBON Braid, 6"x10 feet
STG-4016-6.50	CARBON Braid, 6"x50 feet
STG-4016-8.10	CARBON Braid, 8"x10 feet
STG-4016-8.50	CARBON Braid, 8"x50 feet
STG-4016-10.10	CARBON Braid, 10"x10 feet
STG-4016-10.50	CARBON Braid, 10"x50 feet



## BASALT FIBRE BRAID

LimbTex Basalt is made from superior Basalt fibres derived from volcanic rock making it an eco-friendly and natural material. Specially developed for the industry this material can be used for complete sockets or local reinforcement.

- Safer and cleaner to use than other composites.
- Little to no skin irritation from dust or loose fibres.
- Mechanical properties between, Carbon and Glass fibre makes it a useful and interesting alternative.
- Easier and cleaner to machine than Glass, Carbon and Aramid fibres.
- Non-toxic and non-carcinogenic.
- Lower Rated PPE required to Carbon Fibre (P1 Dust Mask not P3).
- Excellent strength and durability as well as being lightweight.

Code	Description
LT-BFB130/5	130mm ø 45° / 244g/m / 5m pack
LT-BFB150/5	150mm ø 45° / 488g/m / 5m pack
LT-BFB225/5	225mm ø 45° / 661g/m / 5m pack
LT-BFT50	50mm x 50m / 27.65g/m
LT-BFC	1270mm x 790mm / 1 sheet

Massons Healthcare Materials Catalogue 2021

# LAMINATING & CASTING SUPPLIES



## CARBON FIBRE TAPE

Its 2/2 twill weave makes this tape very adaptable to different radii. Available in two widths with different weights per m2.

Code	Description
TF-70.643.100.00	2x2 Twill / 10m x 100mm
TF-70.638.300.00	2x2 Twill / 10m x 300mm



## CARBON FIBRE TAPE UNIDIRECTIONAL

Carbon fibre tape with unidirectional fibre alignment, especially high surface weight. For partial laminate reinforcement.

Code	Description
TF-70.640.628.00	Unidirectional / 10m x 28mm / High surface weight
TF-70.640.645.00	Unidirectional / 10m x 45mm / High surface weight
TF-70.640.675.00	Unidirectional / 10m x 75mm / High surface weight



## LAMINATING & CASTING SUPPLIES

### CARBON FIBRE TAPE UNIDIRECTIONAL

Carbon fibre tape with unidirectional fibre alignment, for partial reinforcement of laminates.

The unidirectional tape can be easily shaped along surfaces with varying radii.



Code	Description
TF-70.641.025.00	Unidirectional / 10m x 25mm / Curved surfaces
TF-70.641.050.00	Unidirectional / 10m x 50mm / Curved surfaces
TF-70.641.075.00	Unidirectional / 10m x 75mm / Curved surfaces
TF-70.641.100.00	Unidirectional / 10m x 100mm / Curved surfaces

### SPECTRACARB STOCKINETTE

- Superb strength in laminations, while maintaining some flexibility.
- Does not itch while working and edges can be buffed
- Carbon strips can be added to specific areas for complete rigidity
- Heat and relieve capabilities allow shapes to be modified after laminating without risk of fracturing or delaminating!
- Ideal for the inner layer of two stage laminations and orthotic applications!



Code	Description
CPI-CSC225	2" Roll 25 Yards
CPI-CSC325	3" Roll 25 Yards
CPI-CSC425	4" Roll 25 Yards
CPI-CSC525	5" Roll 25 Yards
CPI-CSC625	6" Roll 25 Yards
CPI-CSC825	8" Roll 25 Yards

## LAMINATING & CASTING SUPPLIES

### CTC CARBON

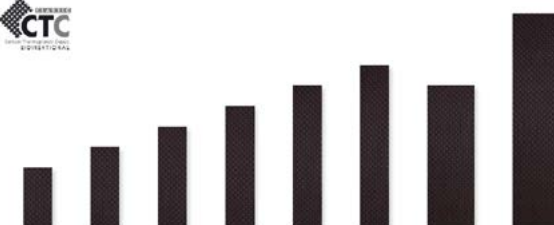
CTC BIDIRECTIONAL offers a good compromise between strength/stiffness and 2D thermoformability.

The proportion of fibres is quite high with 55%. It provides a high bending stiffness in 0° and 90° fibre orientation as well as a high torsional stiffness in 45° fibre orientation.

The fibre orientation of a CTC pre-cut influences its stiffness and deformability.

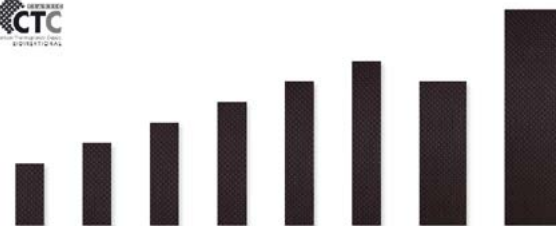
The CTC sheet's fibre orientation can be determined by placing a paper pattern in the desired position on the sheet.

The CTC pre-cut bands, in contrast, already have a reproduced fibre orientation of 45°.



Code	Description
FG-PL1200-M	CTC BIDIRECTIONAL, pre-cut band, 150x80mm, 45°/45° fibre orient., strength M, ca. 1.2mm thick
FG-PL1201-M	CTC BIDIRECTIONAL, pre-cut band, 200x80mm, 45°/45° fibre orient., strength M, ca. 1.2mm thick
FG-PL1202-M	CTC BIDIRECTIONAL, pre-cut band, 250x80mm, 45°/45° fibre orient., strength M, ca. 1.2mm thick
FG-PL1203-M	CTC BIDIRECTIONAL, pre-cut band, 300x80mm, 45°/45° fibre orient., strength M, ca. 1.2mm thick
FG-PL1204-M	CTC BIDIRECTIONAL, pre-cut band, 350x80mm, 45°/45° fibre orient., strength M, ca. 1.2mm thick
FG-PL1205-M	CTC BIDIRECTIONAL, pre-cut band, 400x80mm, 45°/45° fibre orient., strength M, ca. 1.2mm thick
FG-PL1230-S	CTC BIDIRECTIONAL, pre-cut band, 150x80mm, 45°/45° fibre orient., strength S, ca. 1mm thick
FG-PL1231-S	CTC BIDIRECTIONAL, pre-cut band, 200x80mm, 45°/45° fibre orient., strength S, ca. 1mm thick
FG-PL1240-H	CTC BIDIRECTIONAL, pre-cut band, 250x80mm, 45°/45° fibre orient., strength H, ca. 2.3mm thick
FG-PL1240-XH	CTC BIDIRECTIONAL, pre-cut band, 250x80mm, 45°/45° fibre orient., strength XH, ca. 3mm thick
FG-PL1241-H	CTC BIDIRECTIONAL, pre-cut band, 300x80mm, 45°/45° fibre orient., strength H, ca. 2.3mm thick
FG-PL1241-XH	CTC BIDIRECTIONAL, pre-cut band, 300x80mm, 45°/45° fibre orient., strength XH, ca. 3mm thick
FG-PL1242-H	CTC BIDIRECTIONAL, pre-cut band, 350x80mm, 45°/45° fibre orient., strength H, ca. 2.3mm thick
FG-PL1242-XH	CTC BIDIRECTIONAL, pre-cut band, 350x80mm, 45°/45° fibre orient., strength XH, ca. 3mm thick
FG-PL1242-XXH	CTC BIDIRECTIONAL, pre-cut band, 350x80mm, 45°/45° fibre orient., str. XXH, ca. 3.7mm thick
FG-PL1243-H	CTC BIDIRECTIONAL, pre-cut band, 400x80mm, 45°/45° fibre orient., strength H, ca. 2.3mm thick
FG-PL1243-XH	CTC BIDIRECTIONAL, pre-cut band, 400x80mm, 45°/45° fibre orient., strength XH, ca. 3mm thick
FG-PL1243-XXH	CTC BIDIRECTIONAL, pre-cut band, 400x80mm, 45°/45° fibre orient., str. XXH, ca. 3.7mm thick
FG-PL1244-H	CTC BIDIRECTIONAL, pre-cut band, 350x130mm, 0°/90° fibre orient., strength H, ca. 2.3mm thick
FG-PL1244-XH	CTC BIDIRECTIONAL, pre-cut band, 350x130mm, 0°/90° fibre orient., strength XH, ca. 3mm thick
FG-PL1245-H	CTC BIDIRECTIONAL, pre-cut band, 525x150mm, 0°/90° fibre orient., strength H, ca. 2.3mm thick
FG-GPL1245-XH	CTC BIDIRECTIONAL, pre-cut band, 525x150mm, 0°/90° fibre orient., strength XH, ca. 3mm thick

## LAMINATING & CASTING SUPPLIES



### CTC PRECUT

CTC BIDIRECTIONAL offers a good compromise between strength/stiffness and 2D thermoformability.

The proportion of fibres is quite high with 55%. It provides a high bending stiffness in 0° and 90° fibre orientation as well as a high torsional stiffness in 45° fibre orientation. Odourless processing.

The fibre orientation of a CTC pre-cut influences its stiffness and deformability.

The CTC sheet's fibre orientation can be determined by placing a paper pattern in the desired position on the sheet. The CTC pre-cut bands, in contrast, already have a preproduced fibre orientation of 45°.

Code	Description
FG-PL1902	CTC BIDIRECTIONAL, pre-cut carbon fibre bands, set, 14mm system width, 45°/45° fibre orient.
FG-PL1903	CTC BIDIRECTIONAL, pre-cut carbon fibre bands, set, 16mm system width, 45°/45° fibre orient.
FG-PL1905	CTC BIDIRECTIONAL, pre-cut carbon fibre bands, set, 20mm system width, 45°/45° fibre orient.



### CTS CARBON

CTS KNITTED FABRIC offers a high 3D formability as the carbon fibre layers are embedded into the matrix as knitted fabric. Since the carbon fibres of the knitted fabric can be stretched and compressed, the material can be precisely formed by using a hot-air gun. Due to the acrylic matrix, the edges can be excellently ground and polished. CTS KNITTED FABRIC can be adhered to metal, leather and several sorts of plastics.

Code	Description
FG-PL1456-H	CTS KNITTED FABRIC, carbon fibre sheet, 500x500mm, strength H, ca. 3.2mm thick
FG-PL1456-M	CTS KNITTED FABRIC, carbon fibre sheet, 500x500mm, strength M, ca. 2.3mm thick
FG-PL1456-S	CTS KNITTED FABRIC, carbon fibre sheet, 500x500mm, strength S, ca. 1.9mm thick
FG-PL1456-XH	CTS KNITTED FABRIC, carbon fibre sheet, 500x500mm, strength XH, ca. 4mm thick

## LAMINATING & CASTING SUPPLIES



### CTC BIDIRECTIONAL

CTC BIDIRECTIONAL offers a good compromise between strength/stiffness and 2D thermoformability.

The proportion of fibres is quite high with 55%. It provides a high bending stiffness in 0° and 90° fibre orientation as well as a high torsional stiffness in 45° fibre orientation. Odourless processing.

The fibre orientation of a CTC pre-cut influences its stiffness and deformability.

The CTC sheet's fibre orientation can be determined by placing a paper pattern in the desired position on the sheet.

The CTC pre-cut bands, in contrast, already have a preproduced fibre orientation of 45°.

Code	Description
FG-PL1246-H	CTC BIDIRECTIONAL, carbon fibre sheet, 500x500mm, 0°/90° fibre orient., strength H, ca. 2.3mm thick
FG-PL1206-M	CTC BIDIRECTIONAL, carbon fibre sheet, 500x500mm, 45°/45° fibre orient., strength M, ca. 1.2mm thick
FG-PL1232-S	CTC BIDIRECTIONAL, carbon fibre sheet, 500x500mm, 0°/90° fibre orient., strength S, ca. 1mm thick
FG-PL1206-XS	CTC BIDIRECTIONAL, carbon fibre sheet, 500x500mm, 0°/90° fibre orient., strength XS, ca. 0.8mm thick
FG-PL1246-XH	CTC BIDIRECTIONAL, carbon fibre sheet, 500x500mm, 0°/90° fibre orient., strength XH, ca. 3mm thick
FG-PL1246-XXH	CTC BIDIRECTIONAL, carbon fibre sheet, 500x500mm, 0°/90° fibre orient., str. XXH, ca. 3.7mm thick



Massons Healthcare Materials Catalogue 2021

# LAMINATING & CASTING SUPPLIES



## GLU-IT RAPID RESPONSE

Glu-It offers a superior urethane based structural adhesive for rapid response application. Glu-It was designed to properly balance viscosity and strength with less filler added to the formula. Best BOND strength guaranteed. Features:

- 1–2 Minute worktime may vary depending on how thick or thin glue is applied
- Less filler added = stronger bonding
- Dries clear
- Made in the USA

Code	Description
STG-4011-3.10	Glu-It Rapid Response Urethane Adhesive 220ml
STG-4011-3.50	Glu-It Rapid Response Urethane Adhesive 50ml

Massons Healthcare Materials Catalogue 2021

# LAMINATING & CASTING SUPPLIES



## MIXER NOZZLE FOR GLU-IT

Code	Description
STG-4112-06	50 ml Mixer Nozzle for Glu-It, pkg of 6ea
STG-4112-72	50 ml Mixer Nozzle for Glu-It, pkg of 72ea
STG-4112-144	50 ml Mixer Nozzle for Glu-It, pkg of 144ea



## MIXER NOZZLE FOR GLU-IT

Code	Description
STG-4113-06	220 ml Mixer Nozzle for Glu-It, pkg of 6ea
STG-4113-72	220 ml Mixer Nozzle for Glu-It, pkg of 72ea
STG-4113-144	220 ml Mixer Nozzle for Glu-It, pkg of 144ea

Massons Healthcare Materials Catalogue 2021

# LAMINATING & CASTING SUPPLIES

## E-R RESIN

Pure Epoxy Resin

Code	Description
PRS-E-R Resin	E-R Resin, pure Epoxy resin



## NKS EPOXY/ACRYLIC RESIN

Epoxy/Acrylic Resin

Code	Description
FVR2550	NKS Epoxy /Acrylic Resin
FVR-120	BP Hardener 300g Tub, White, Water Based

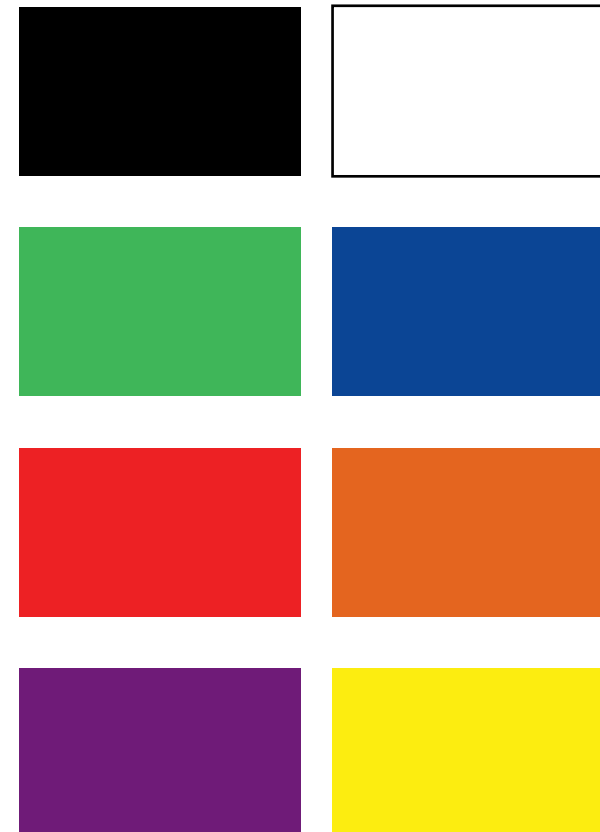


Massons Healthcare Materials Catalogue 2021

# LAMINATING & CASTING SUPPLIES

## E-R RESIN COLOURS

Code	Description
PRS-FCS03	Flesh Colour System Colour 3 (500G)
PRS-FCS07	Flesh Colour System Colour 7 (500G)
PRS-FCS10	Flesh Colour System Colour 10 (500G)
PRSFCS05	Flesh Colour System Colour 5 (500G)
PRS-FCSR05	Flesh Colour System R05 (500G)
PRS-FCSR13	Flesh Colour System R13 (500G)
PRS-FCSR29	Flesh Colour System R29 (500G)
PRS-FCSR33	Flesh Colour System R33 (500G)
PRS-FCSR37	Flesh Colour System R37 (500G)
PRS-FCSBLK	Flesh Colour System Black
PRS-FCSWHT	Flesh Colour System White
PRS-FCSGRN	Flesh Colour System Green
PRS-FCSBLUE	Flesh Colour System Blue
PRS-FCSRED	Flesh Colour System Red
PRS-FCSORG	Flesh Colour System Orange
PRS-FCSGRP	Flesh Colour System Grape
PRS-FCSYEL	Flesh Colour System Yellow





LAMINATING & CASTING SUPPLIES



COPY PU

Flexible polyurethane foam (non-expansive). Recommended for making a copy of prosthesis sockets. This system enables reproducing common orthopaedic prosthesis sockets, thus meaning these can be renovated quickly and economically, and with no complications for the patient. Allows laminating on top with prior fitting of a PVA cover. Used with isocyanate 170 catalyst.

Code	Description
OKM-CO-01	OKMCOPY PU 1 KG
OKM-IS-170-02	OKM-ISO 170 ISOCYANATE 2 KG, CATALYST

DEMOULDING GREASE

OKM Grease for checking sockets. Enables fast demoulding and translucent finish. Recommended in polyurethane positives.



Code	Description
OKM-DG-05	MOULD REMOVER GREASE 5 KG

LAMINATING & CASTING SUPPLIES



FOAM

Rigid expansive polyurethane foam used for patients molding. The result is much lighter than plaster (80-90% lighter) and very easy to polish.

Code	Description
OKM-FO-120-25	OKMFOAM 120 RIGID EXPANSIVE PU 25 KG
OKM-IS-110-05	OKM-ISO 110 ISOCYANATE 5 KG, CATALYST

Massons Healthcare Materials Catalogue 2021

## TRANSFER PAPERS FABRICS & TATTOOS

Massons Healthcare understands the importance of customisability, personalisation and appearance.

That's why we offer over 300 unique styles of transfer papers which allow for each and every orthosis or prosthesis to be it's own bespoke piece.

Quality is paramount to Massons Healthcare. Our transfer papers have been used and proven throughout our own manufacturing and customer base.

We are happy to help with any support or technical questions regarding our products.

Call Us: +61(3) 9898 0011  
[info@massonshealthcare.com.au](mailto:info@massonshealthcare.com.au)  
 Unit 15/111 Lewis Road, Knoxfield 3180 VIC Australia  
 Mon-Fri: 9:00am to 5:00pm

\*\*More products available upon request - see pricelist for full range\*\*





## TRANSFER PAPER FABRICS &amp; TATTOOS



MH-PT-13



MH-PT-14



MH-PT-15



MH-PT-17



MH-PT-19



MH-PT-20



MH-PT-22



MH-PT-23



MH-PT-24



MH-PT-25



MH-PT-27



MH-PT-29



MH-PT-30



MH-PT-34



MH-PT-36



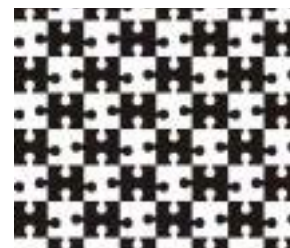
MH-PT-41



MH-PT-43



MH-PT-44



MH-PT-47



MH-PT-48



MH-PT-50



MH-PT-51



MH-PT-52



MH-PT-54

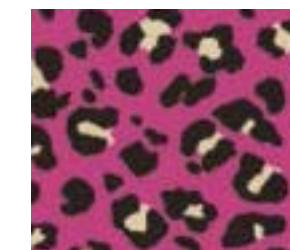
## TRANSFER PAPER FABRICS &amp; TATTOOS



MH-PT-57



MH-PT-58



MH-PT-61



MH-PT-64



MH-PT-65



MH-PT-66



MH-PT-67



MH-PT-68



MH-PT-73



MH-PT-75



MH-PT-76



MH-PT-78



MH-PT-79



MH-PT-80



MH-PT-81



MH-PT-83



MH-PT-84



MH-PT-85



MH-PT-86



MH-PT-87



MH-PT-88



MH-PT-89



MH-PT-90



MH-PT-92



## TRANSFER PAPER FABRICS &amp; TATTOOS



MH-PT-93



MH-PT-94



MH-PT-97



MH-PT-98



MH-PT-99



MH-PT-101



MH-PT-103



MH-PT-104



MH-PT-105



MH-PT-109



MH-PT-110



MH-PT-115



MH-PT-117



MH-PT-118



MH-PT-120



MH-PT-121



MH-PT-124



MH-PT-125



MH-PT-126



MH-PT-127



MH-PT-129



MH-PT-130



MH-PT-131



MH-PT-132

## TRANSFER PAPER FABRICS &amp; TATTOOS



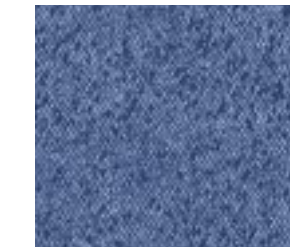
MH-PT-134



MH-PT-135



MH-PT-138



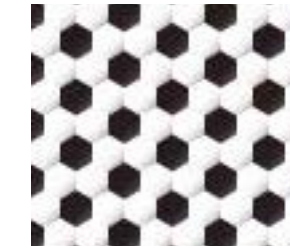
MH-PT-139



MH-PT-140



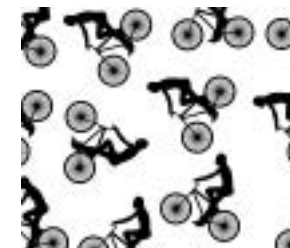
MH-PT-144



MH-PT-145



MH-PT-146



MH-PT-147



MH-PT-148



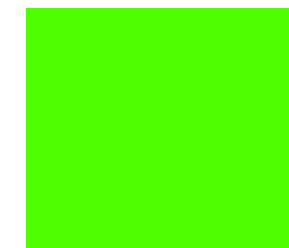
MH-PT-149



MH-PT-157



MH-PT-254



MH-PT-261



MH-PT-263



MH-PT-266



MH-PT-268



MH-PT-269



MH-PT-271



MH-PT-272



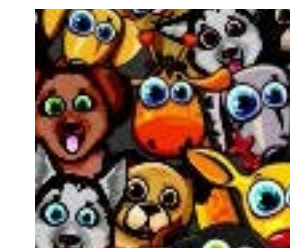
MH-PT-273



MH-PT-275



MH-PT-276



MH-PT-278



## TRANSFER PAPER FABRICS &amp; TATTOOS



MH-PT-279



MH-PT-280



MH-PT-281



MH-PT-282



MH-PT-284



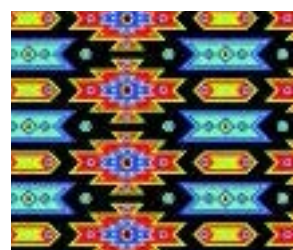
MH-PT-289



MH-PT-290



MH-PT-292



MH-PT-294



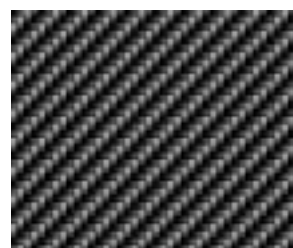
MH-PT-305



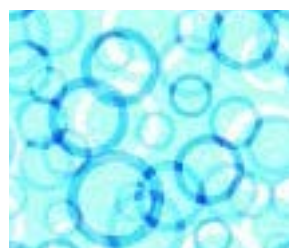
MH-PT-306



MH-PT-309



MH-PT-310



MH-PT-313



MH-PT-314



MH-PT-316



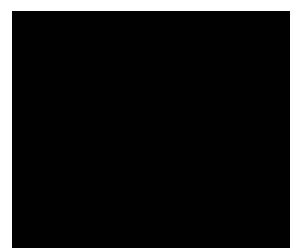
MH-PT-317



MH-PT-318



MH-PT-319



MH-PT-325



MH-PT-335



MH-PT-336



MH-PT-337



MH-PT-338

## TRANSFER PAPER FABRICS &amp; TATTOOS



MH-PT-339



MH-PT-340



MH-PT-341



MH-PT-342



MH-PT-501



MH-PT-509



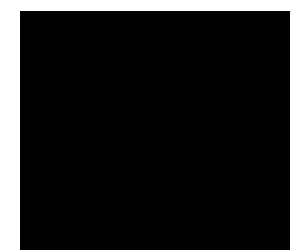
AC-TP1019



AC-TP1020



AC-TP1021



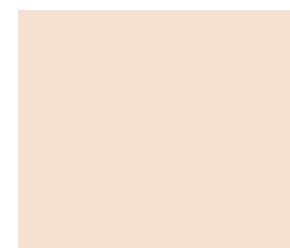
AC-TP1062



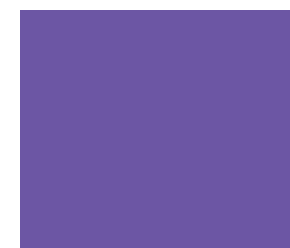
AC-TP1071



AC-TP1073



AC-TP1074



AC-TP1075



AC-TP1013



AC-TP1014



AC-TP1015



AC-TP1016



AC-TP1023



AC-TP1025



AC-TP1026



AC-TP1030



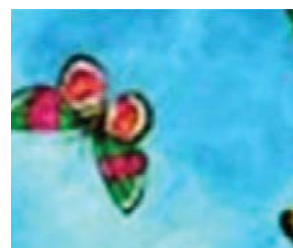
AC-TP1036



AC-TP1037



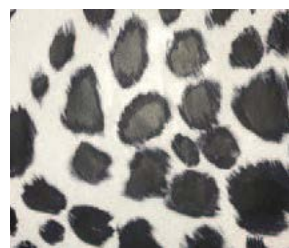
## TRANSFER PAPER FABRICS &amp; TATTOOS



AC-TP1038



AC-TP1039



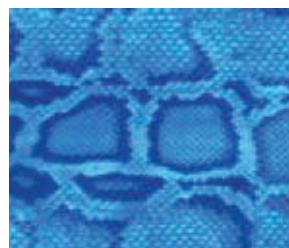
AC-TP1048



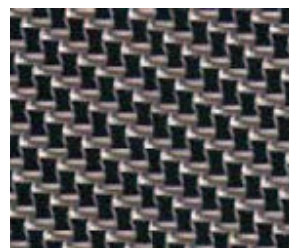
AC-TP1050



AC-TP1051



AC-TP1052



AC-TP1063



AC-TP1064



AC-TP1065



AC-TP1066



AC-TP1067



AC-TP1068



AC-TP1069 (\*)



AC-TP1072



AC-TP1076



AC-TP1077



AC-TP1078



AC-TP1083



AC-TP1084



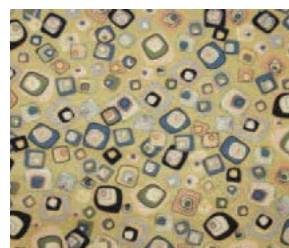
AC-TP1088



AC-TP1090



AC-TP1091

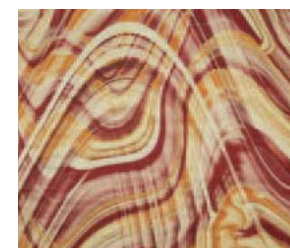


AC-TP1093



AC-TP1094

## TRANSFER PAPER FABRICS &amp; TATTOOS



AC-TP1095 (\*)



AC-TP1099



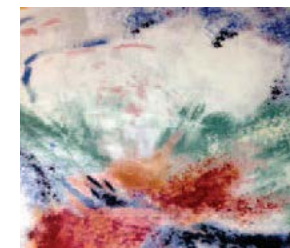
AC-TP1080



AC-TP1000



AC-TP1001



AC-TP1006



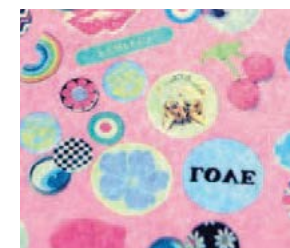
AC-TP1007



AC-TP1008



AC-TP1009



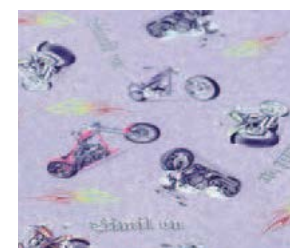
AC-TP1011



AC-TP1012



AC-TP1017



AC-TP1018



AC-TP1022



AC-TP1024



AC-TP1028



AC-TP1029



AC-TP1033



AC-TP1035



AC-TP1040



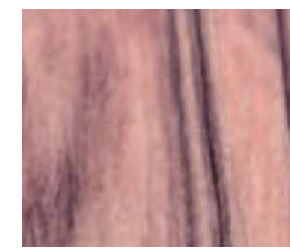
AC-TP1041



AC-TP1042



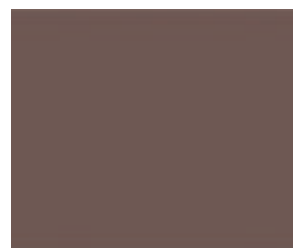
AC-TP1043



AC-TP1044



## TRANSFER PAPER FABRICS &amp; TATTOOS



AC-TP1045



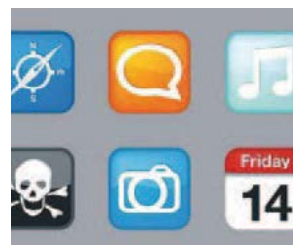
AC-TP1046



AC-TP1047



AC-TP1061



AC-TP1087



AC-TP1010



AC-TP1096



AC-TP1049



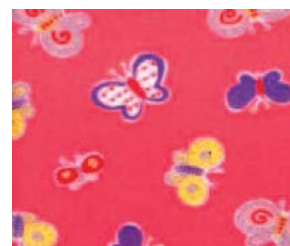
AC-TP1081



AC-TP1053



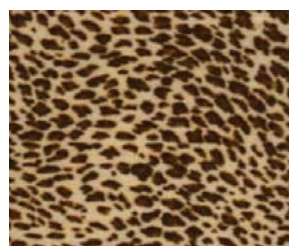
AC-TP2030



AC-TP2040



AC-TP2041



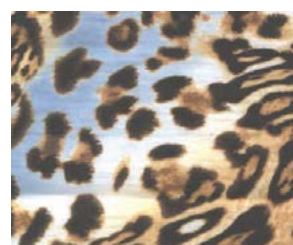
AC-TP2043



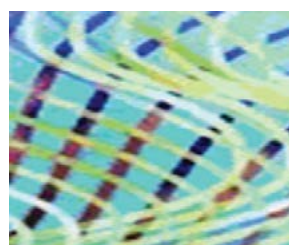
AC-TP2044



AC-TP3000



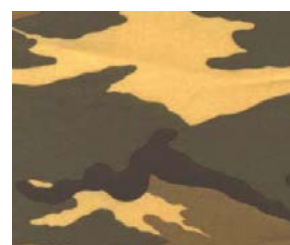
AC-TP3037



AC-TP3048



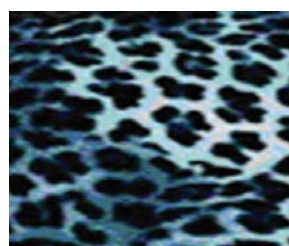
AC-TP3049



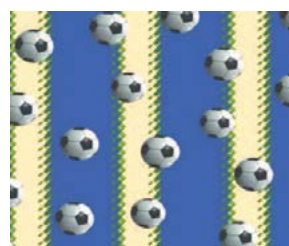
AC-TP3054



AC-TP3055



AC-TP3059



AC-TP3061



AC-TP3065

## TRANSFER PAPER FABRICS &amp; TATTOOS



AC-TP3081



AC-TP3082



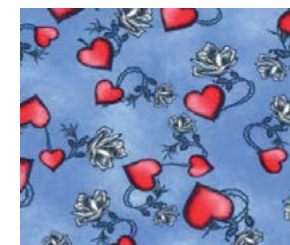
AC-TP3089



AC-TP3093



AC-TP3097



AC-TP3098



AC-TP3099



AC-TP3100



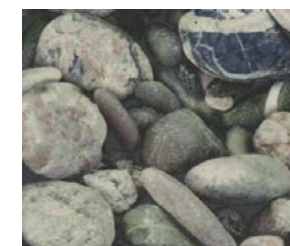
AC-TP3101



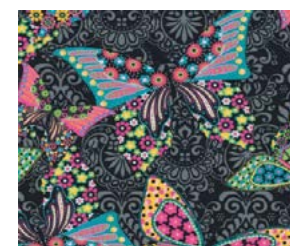
AC-TP3102



AC-TP3103



AC-TP3105



AC-TP3106



AC-TP3108



AC-TP3109



AC-TP3110



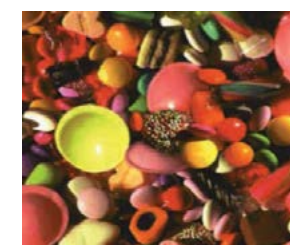
AC-TP2042



AC-TP2045



AC-TP2046



AC-TP3112



AC-TP2047



AC-TP2551



AC-TP2552



AC-TP2553



## TRANSFER PAPER FABRICS &amp; TATTOOS



AC-TP2555



AC-TP2556



AC-TP3066



AC-TP3068



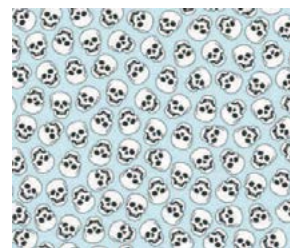
AC-TP3096



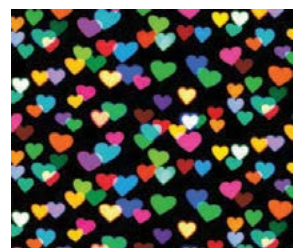
AC-TP3114



AC-TP3115



AC-TP3116



AC-TP3117



LT-TPH



LT-TPLB



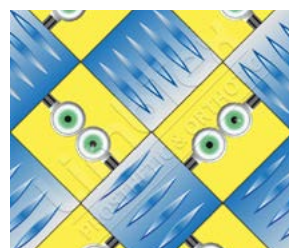
LT-TPJR



LT-TPAMAZH



LT-TPANGM



LT-TPECPB



LT-TPFEFAT



LT-TPFGH



LT-TPFHY



LT-TPHSHDS



LT-TPSHEROM



LT-TPSHEROW



LT-TPSHEROC



LT-TPSPIST

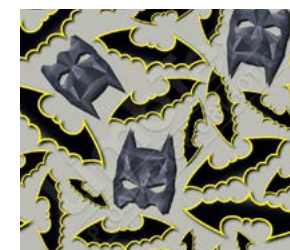


LT-TPSUPFY

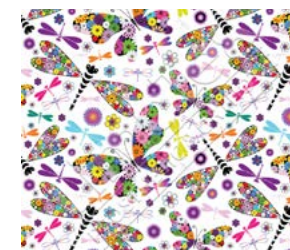
## TRANSFER PAPER FABRICS &amp; TATTOOS



LT-TPSUSHD



LT-TPTMASKH



LT-TPBEAU



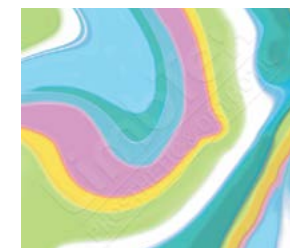
LT-TPSSBLK



LT-TPSSL



LT-TPSSPNK



LT-TPSWPAS



LT-TPDOLP



LT-TPSEACBLU



LT-TPSEACYEL

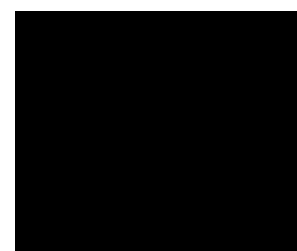


LT-TPUNIC



## TRANSFER PAPER FABRICS &amp; TATTOOS

## PLAIN COLOURED LYCRA



BLACK



DARK GREEN



ORANGE



PURPLE



RED



ROYAL BLUE



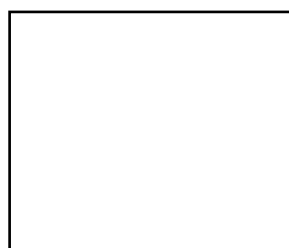
SKIN LIGHT



SKIN MEDIUM



SKY BLUE



WHITE

Design Name	Product Code for 15cm x 1.4m Tubes	Product Code for 20cm x 1.4m Tubes	Product code for 1m x 1.4m Flat Fabric
Black	LT-LBLK/15	LT-LBLK/20	LT-LBLK
Dark Green	LT-LDG/15	LT-LDG/20	LT-LDG
Orange	LT-LORG/15	LT-LORG/20	LT-LORG
Purple	LT-PURP/15	LT-PURP/20	LT-PURP
Red	LT-LRED/15	LT-LRED/20	LT-LRED
Royal Blue	LT-LRB/15	LT-LRB/20	LT-LRB
Skin Light	LT-LSKL/15	LT-LSKL/20	LT-LSKL
Skin Medium	LT-LSKMD/15	LT-LSKMD/20	LT-LSKMD
Sky Blue	LT-LSKYB/15	LT-LSKYB/20	LT-LSKYB
White	LT-LWHT/15	LT-LWHT/20	LT-LWHT

## TRANSFER PAPER FABRICS &amp; TATTOOS

## DECORATIVE LYCRA



BIZARRE



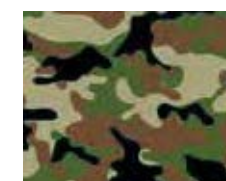
BLUE WRAPPING



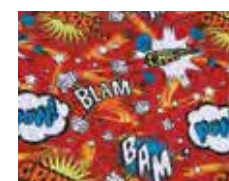
BUNNIES PINK



CANADIAN BRAID



CAMOFLAGE GREEN



CARTOON RED



CLOUDBURST



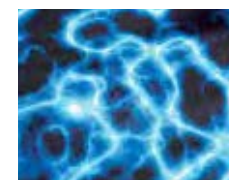
COLOURED BUBBLES



DENIM



DOLLAR BILL



ELECTRIC BLUE



FILM STAR



GRAFFITI



HAPPY STARS



HIP CHICKS

Design Name	Product Code for 15cm x 1.4m Tubes	Product Code for 20cm x 1.4m Tubes	Product Code for 1m x 1.4m Tubes
Bizarre	LT-LBIZ/15	LT-LBIZ/20	LT-LBIZ
Blue Wrapping	LT-LBW/15	LT-LBW/20	LT-LBW
Bunnies Pink	LT-LBP/15	LT-LBP/20	LT-LBP
Canadian Braid	LT-LCADB/15	LT-LCADB/20	LT-LCADB
Camouflage Green	LT-LCG/15	LT-LCG/20	LT-LCG
Cartoon Red	LT-LCR/15	LT-LCR/20	LT-LCBY
Cloudburst Yellow	LT-LCBY/15	LT-LCBY/20	LT-LCB
Coloured Bubbles	LT-LCB/15	LT-LCB/20	LT-LD
Denim	LT-LD/15	LT-LD/20	LT-LDB
Dollar Bill	LT-LDB/15	LT-LDB/20	LT-LES
Electric Blue	LT-LES/15	LT-LES/20	LT-LG
Film Star	LT-LFS/15	LT-LFS/20	LT-LFS
Graffiti	LT-LG/15	LT-LG/20	LT-LG
Happy Stars	LT-LHS/15	LT-LHS/20	LT-LHS
Hip Chicks	LT-LHC/15	LT-LHC/20	LT-LHC



Massons Healthcare Materials Catalogue 2021

# TRANSFER PAPER FABRICS & TATTOOS

## DECORATIVE LYCRA



Design Name	Product Code for 15cm x 1.4m Tubes	Product Code for 20cm x 1.4m Tubes	Product Code for 1m x 1.4m Tubes
Ice Blue	LT-LIB/15	LT-LIB/20	LT-LIB
Ice Pink	LT-LIP/15	LT-LIP/20	LT-LIP
Jolly Roger	LT-LJR/15	LT-LJR/20	LT-LJR
Magic Stars	LT-LMS/15	LT-LMS/20	LT-LMS
Orange Drops	LT-LOD/15	LT-LOD/20	LT-LOD
Panther	LT-LPTH/15	LT-LPTH/20	LT-LPTH
Pink Swirl	LT-LPS/15	LT-LPS/20	LT-LPS
Scottish Saltire	LT-LSF/15	LT-LSF/20	LT-LSF
Snake Skin Brown	LT-LSB/15	LT-LSB/20	LT-LSB
Spidey	LT-LSP/15	LT-LSP/20	LT-LSP
St Georges Cross	LT-LSGC/15	LT-LSGC/20	LT-LSGC
Under Water	LT-LUW/15	LT-LUW/20	LT-LUW
Union Jack	LT-LUJ/15	LT-LUJ/20	LT-LUJ
USA	LT-LUSA/15	LT-LUSA/20	LT-LUSA
Welsh Dragon	LT-LWD/15	LT-LWD/20	LT-LWD

Massons Healthcare Materials Catalogue 2021

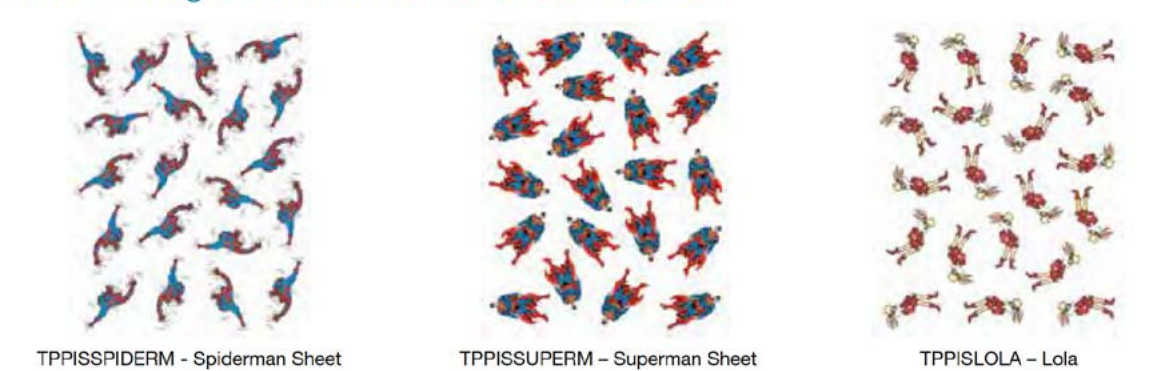
# TRANSFER PAPER FABRICS & TATTOOS

## TATTOOS

### Positive Image Spot Transfers - 9cm x 18cm



### Positive Image Sheet Transfers - 21.5cm x 28cm



**\*\*More designs available upon request\*\***



Massons Healthcare Materials Catalogue 2021

## EVA FOAMS + PADDING & COVERING

Over 20 years of in-house manufacturing experience of orthotic and prosthetic devices with a focus on CAD/CAM has provided Massons Healthcare with a extensive and diverse range of experience regarding our products.

We know the ins & outs of all our offerings and strive to help you find the optimal solution for your patients.

With a wide range of materials to choose from, Massons Healthcare caters to all your manufacturing needs.

We are happy to help with any support or technical questions regarding our products.

Call Us: +61(3) 9898 0011  
[info@massonshealthcare.com.au](mailto:info@massonshealthcare.com.au)  
 Unit 15/111 Lewis Road, Knoxfield 3180 VIC Australia  
 Mon-Fri: 9:00am to 5:00pm

**\*\*More products available upon request - see pricelist for full range\*\***





Massons Healthcare Materials Catalogue 2021

# EVA FOAMS + PADDING & COVERING



## PLASTAZOTE LD70 FOAMS

Firm build ups on liners & general padding.

Code	Description
LT-LD70PZ12WHT	LD70 White / 12x1700x850mm / 1 sheet
LT-LD70PZ25WHT	LD70 White / 25x1700x850mm / 1 sheet



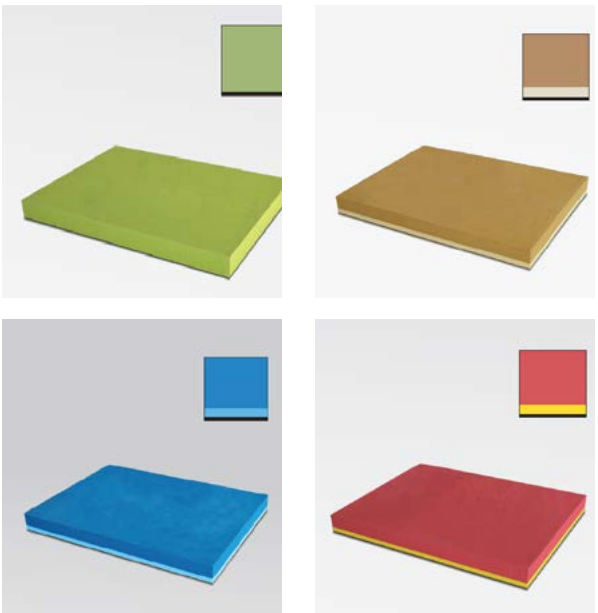
## PELITE FOAM

Code	Description
PELITEBHD2	Pelite Beige H/Density 2mm (720x1.47)
PELITEBHD5	Pelite Beige H/Density 5mm (720x1.47)
PELITEBHD6	Pelite Beige H/Density 6mm (720x1.47)
PELITEBLD5	Pelite Beige L/Density 5mm (850x1.70)
PELITEBLD6	Pelite Beige L/Density 6mm (850x1.70)
PELITEBLD10	Pelite Beige L/Density 10mm (785x1.65)
PELITEWHTLD8	Pelite White L/Density 8mm (850x1.70)
PELITE WHTHD8	Pelite White H/Density 8mm (720x1.47)



Massons Healthcare Materials Catalogue 2021

# EVA FOAMS + PADDING & COVERING



## EVA MILLING BLOCKS

Our stock EVA milling blocks are available in a standard range of colors. Directly available and with the best possible price. This block range can be customized with a bottom basis layer.

Code	Description
VC-Dressed	40/ 80 Sh Green/Black 350 x 260 x 35 mm
VC-Dressed Large	40/ 80 Sh Green/Black 350 x 300 x 35 mm
VC-Care	Brown/ Beige/ Black 30/ 20/ 80 Sh 350 x 260 x 35mm
VC-Care Large	Brown/ Beige/ Black 30/ 20/ 80 Sh 350 x 300 x 35mm
VC-Comfort	Dark Blue/ Light Blue/ Black 40/ 25/ 80 Sh 350 x 260 x35mm
VC-Comfort Large	Dark Blue/ Light Blue/ Black 40/ 25/ 80 Sh 350 x 300 x35mm
VC-Performance	Red/ Yellow/ Black 50/ 30/ 80 Sh 350 x 260 x35mm
VC-Performance Large	Red/ Yellow/ Black 50/ 30/ 80 Sh 350 x 300 x35mm

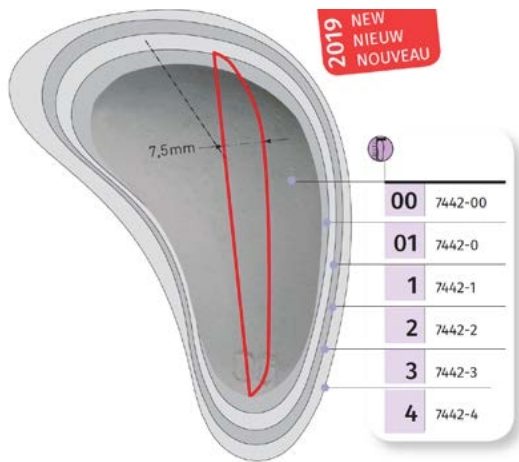


## EVA MONO BLOCKS

Code	Description
VC-Beige	20 Shore Beige 350 x 260 x 35 mm
VC-Beige Large	20 Shore Beige 350 x 300 x 35 mm
VC-White	30 Shore White 350 x 260 x 35 mm
VC-White Large	30 Shore White 350 x 300 x 35 mm
VC-Grey	40 Shore Grey 350 x 260 x 35 mm
VC-Grey Large	40 Shore Grey 350 x 300 x 35 mm
VC-Dark Grey	50 Shore Dark Grey 350 x 260 x 35 mm
VC-Dark Grey Large	50 Shore Dark Grey 350 x 300 x 35 mm
VC-Anthracite	60 Shore Anthracite 350 x 260 x 35 mm
VC-Anthracite Large	60 Shore Anthracite 350 x 300 x 35 mm

Massons Healthcare Materials Catalogue 2021

EVA FOAMS + PADDING & COVERING



METATARSAL PAD

Code	Description
AFT-74508101	Pad Latex Stomach Shape 7442 NR 0
AFT-7450811	Pad Latex Stomach Shape 7442 NR1
AFT-7450812	Pad Latex Stomach Shape 7442 NR2
AFT-7450813	Pad Latex Stomach Shape 7442 NR3

Massons Healthcare Materials Catalogue 2021

EVA FOAMS + PADDING & COVERING



DRYFEET SMOOTH

Very high abrasion resistance, breathable. Very good moisture absorption and release. Feels and looks like leather. Very good tear resistance and tensile strength. Selected colors available with eucalyptus finish.

Code	Description
PERP-81DF23	Pink smooth 0.8 mm
PERP-81DF32	Aqua smooth 0.8 mm
PERP-81DF37	Purple smooth 0.8 mm
PERP-81DF40	Apple smooth 0.8 mm
PERP-81DF36	Dark blue smooth 0.8 mm
PERP-81DF52	Beige smooth 0.8 mm
PERP-81DF61	Nature smooth 0.8 mm
PERP-81DF50	Brown smooth 0.8 mm
PERP-81DF80	Black smooth 0,8 mm
PERP-81DF86	Anthracite smooth 0.8 mm



DRYFEET +

Code	Description
PERP-V65	Dry Feet Black, micro perforated combined with EVA 20 Sh, 2mm, Anthracite, 100cm x 210cm
PERP-V60	Dry Feet Black, micro perforated combined with EVA 20 Sh, 3mm, Anthracite, 100cm x 210cm
PERP-V62	Dry Feet Grey, micro perforated combined with EVA 20 Sh, 2mm, Anthracite, 100cm x 210cm



CLARINO NASH

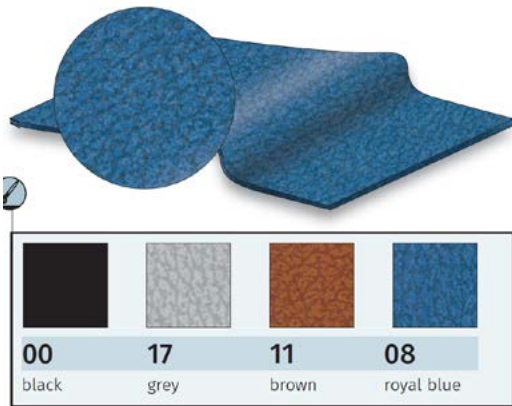
Antibacterial  
Breathable  
Water vapor permeable  
Washable

Code	Description
PERP-81CL50	Brown - 0.6 mm
PERP-81CL52	Beige - 0.6 mm
PERP-81CL82	Grey - 0.6 mm
PERP-81CL86	Black - 0.6 mm



Massons Healthcare Materials Catalogue 2021

# EVA FOAMS + PADDING & COVERING



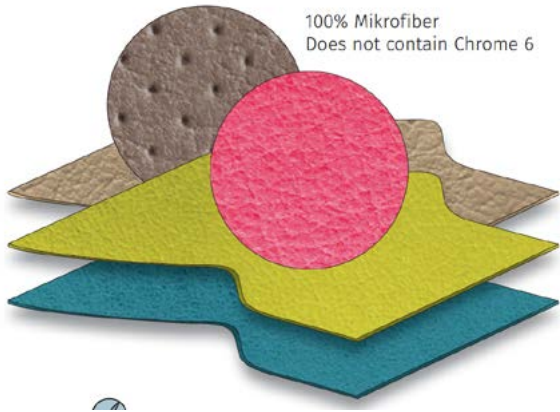
## LETEX 3590

Washable, strong, high tractive power, air transmittable, vapour transmittable, colourfast, friction fast.

Code	Description
AFT-3590000	LETEX *100x145* BLACK
AFT-3590100	LETEX Mini Roll Black 11cm, 30 metres
AFT-3590100	LETEX Mini Roll Black 11cm, 30 metres

## THERMYTEX 3592

Thermo-regulating, anti-allergy, breathable, absorbent, washable, leather look.



Code	Description
AFT-35920001	Thermy Tex 100x137CM BLK
AFT-35920003	Thermy-Tex 100x137CM TAUPE
AFT-35920007	THERMY-TEX 100x137CM GREY
AFT-35920007	THERMY-TEX 100x137CM DARK GREY
AFT-35921001	THERMY-TEX MINI ROLL 11.5cm BLACK, 25 Metres
AFT-35921003	THERMY-TEX MINI ROLL TAUPE 11.5cm, 25 Metres
AFT-35921003	THERMY-TEX MINI ROLL TAUPE 11.5cm, 25 Metres
AFT-35921007	THERMY-TEX MINI ROLL GREY -11.5cm, 25 Metres

Massons Healthcare Materials Catalogue 2021

# EVA FOAMS + PADDING & COVERING



## SUETEX 3593

Washable, strong, high tractive power, air transmittable, vapour transmittable, colourfast, friction fast.

Code	Description
AFT-3593000	Suetex* 100x137cm Black
AFT-3593005	Suetex*100X137CM Dark Blue
AFT-3593017	Suetex*100x137cm Grey

## DISPLAY AFT

Display for fabrics on mini rolls



Code	Description
AFT-60300002AFT	DISPLAYS FOR FABRIC AFT

## EVA FOAMS + PADDING &amp; COVERING



## PPT SHEET

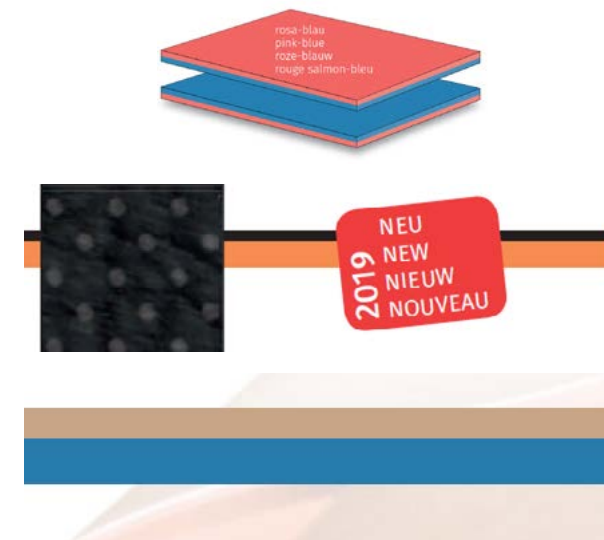
Code	Description
AFT-700510164	P422- PPT TAN 6.4mm SM/AB 152x65cm
AFT-700530216	P644-PPT SLOW REC ORANGE 1.6 mm AB/AB 1 52x 65cm
AFT-700530232	P844 PPT SLOW REC ORANGE 3.2mm AB/AB 152x65cm
AFT-700550216	R624 PPT TAN 1.6MM AB/AB -500SF ROLLSIZE: 500SF = 46.46msq =30.56x1.52 m
AFT-700550232	R824-PPT TAN ROLL *3.2mm AB/AB -500SF ROLL SIZE :500 SF =46.46msq =30.56x1.52m
AFT-700620116	M624-PPT TAN MINI ROLL 1.6mm AB/AB 11.50cm
AFT-700620132	M824 PPT TAN MINI ROLL 3.2mm AB/AB 11.50cm
AFT-700640116	M604-PPT BLUE MINI ROLL 1.6mm AB/AB- 11.50cm
AFT-700640132	M804 PPT BLUE MINI ROLL 3.2mm AB/AB 11.50cm



## ULTRALUX

Code	Description
AFT-700690216	M609-PPT ULTRALUX MINI ROLL 1.6mm BL/BL 11.50cm
AFT-700690232	M809 PPT ULTRALUX MINI ROLL 3.2MM BL/BL 11.50CM

## EVA FOAMS + PADDING &amp; COVERING



## THERMYTEX + THERMOLAST

Code	Description
AFT-702310530	PU-DUO LAYER ROSA/BL 137x73cm x 3mm
AFT-709HF202105	Highflex -25/TT- Un- perforated, Covering material, Black/Orange
AFT-709TL201	Termol-20 Plastazote-5mm, Termolast-20-Beige-2mm, PLastazote-Blue-3mm



## EVA MARBLE MINI ROLL

Code	Description
AFT-71602322012	EVA MARBLE/30 Mini Roll 2mm 32-BLACK 11M x 12 CM
AFT-71602372012	EVA-MARBLE/30 MINI ROLL 2mm 37 ORANGE 11Mx12CM
AFT-71602452012	EVA-MARBLE/30 MINI ROLL 45 MARINE 11m X 12cm



## ALPHA FLAT SHEET

Code	Description
OW-ALF-0130	Alpha Flat Sheet Fabric On 1 Side 3mm Buff
OW-ALF-0160	Alpha Flat Sheet Fabric On 1 Side 6mm Buff
OW-ALF-0190	Alpha Flat Sheet Fabric On 1 Side 9mm Buff
OW-ALF-1130	Alpha Flat Sheet Fabric On Both Sides 3mm Buff
OW-ALF-1160	Alpha Flat Sheet Fabric On Both Sides 6mm Buff
OW-ALF-1190	Alpha Flat Sheet Fabric On Both Sides 9mm Buff



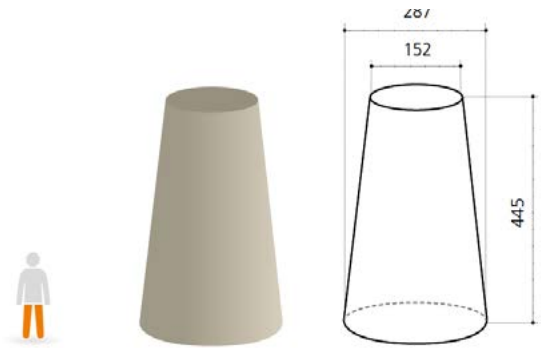
Massons Healthcare Materials Catalogue 2021

EVA FOAMS + PADDING & COVERING

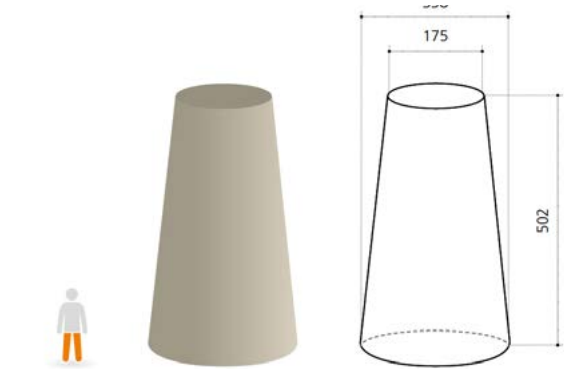
MOLDED RIGID PU

Rigid polyurethane blocks are specially designed for CAD/CAM milling machines or robots.  
 Polyurethane is ideal for torso, extremities or cranial orthosis.  
 Check our different blocks available and choose the ones that adapt to your fixation system.

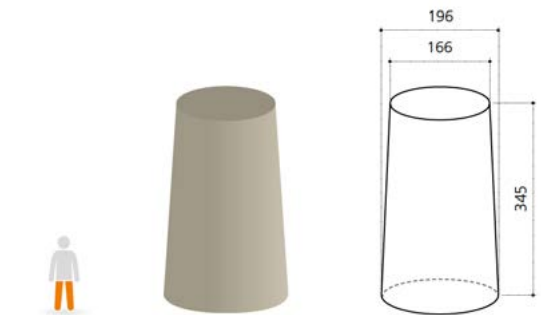
Code	Description
OKM-BL-101	PU Block 450x290x150mm



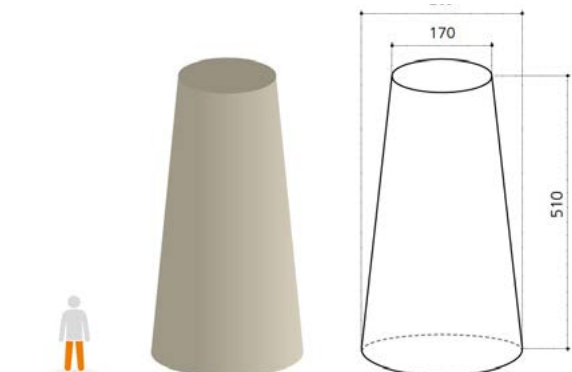
Code	Description
OKM-BL-102	PU Block 500x340x175mm



Code	Description
OKM-BL-103	PU Block 345x196x166mm



Code	Description
OKM-BL-104	PU Block 510x289x170mm TRA. FIX. 1/2 AXE



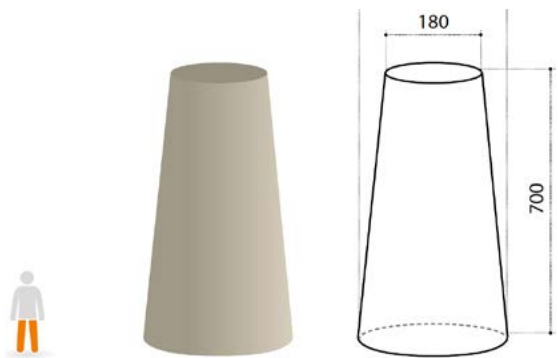
Massons Healthcare Materials Catalogue 2021

EVA FOAMS + PADDING & COVERING

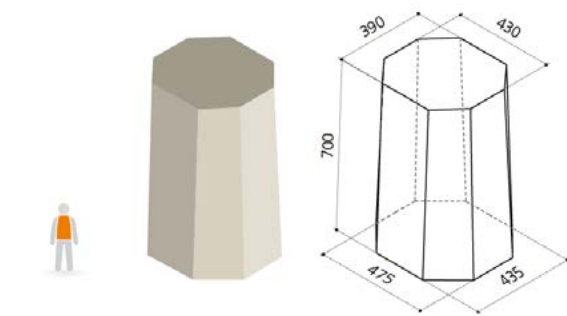
MOLDED RIGID PU

Rigid polyurethane blocks are specially designed for CAD/CAM milling machines or robots.  
 Polyurethane is ideal for torso, extremities or cranial orthosis.  
 Check our different blocks available and choose the ones that adapt to your fixation system.

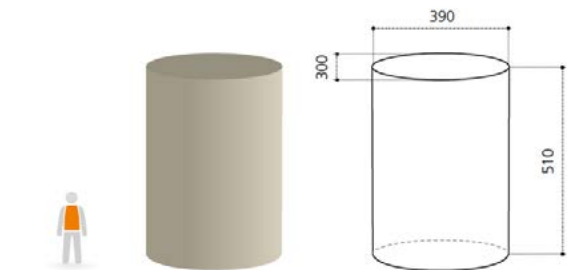
Code	Description
OKM-BL-113	PU Block 700x290x180mm



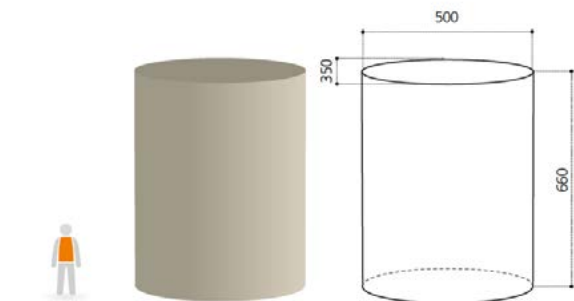
Code	Description
OKM-BL-201	PU Block 700x475x435mm



Code	Description
OKM-BL-204	PU Block 510x390x300mm



Code	Description
OKM-BL-205	PU Block 660x390x300mm

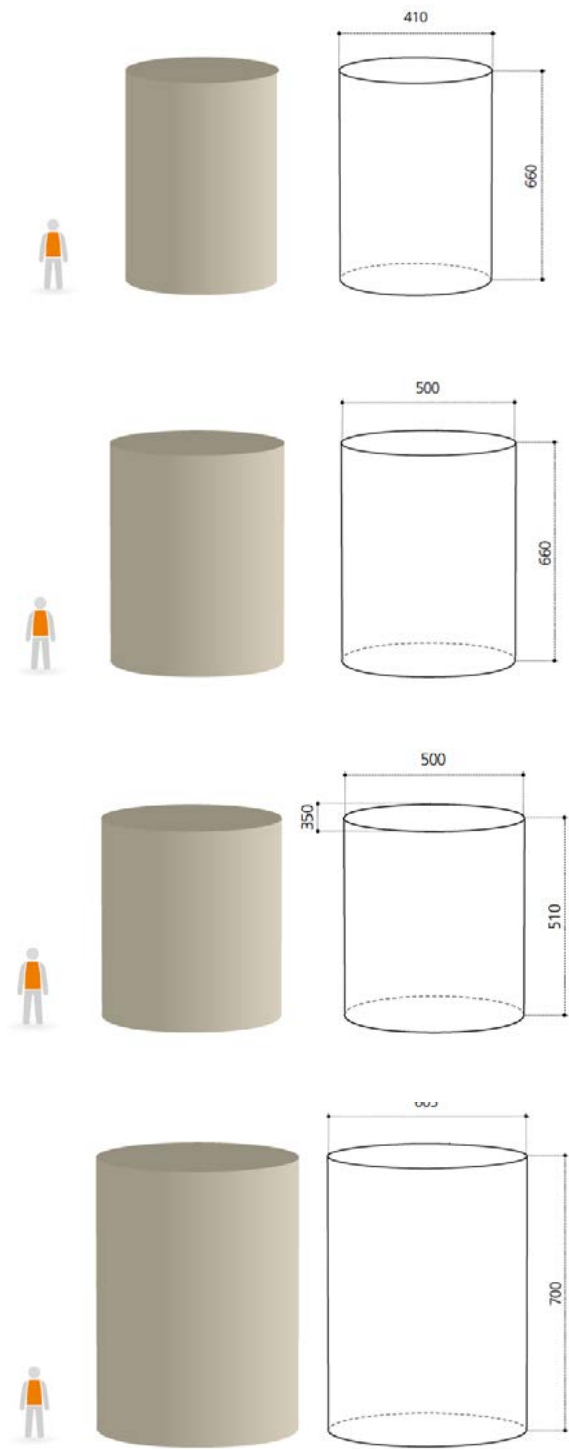


Massons Healthcare Materials Catalogue 2021

EVA FOAMS + PADDING & COVERING

MOLDED RIGID PU

Rigid polyurethane blocks are specially designed for CAD/CAM milling machines or robots.  
Polyurethane is ideal for torso, extremities or cranial orthosis.  
Check our different blocks available and choose the ones that adapt to your fixation system.



Code	Description
OKM-BL-206	PU Block 660x410x410mm

Code	Description
OKM-BL-207	PU Block 660x500x500mm

Code	Description
OKM-BL-210	PU Block 510x500x350mm

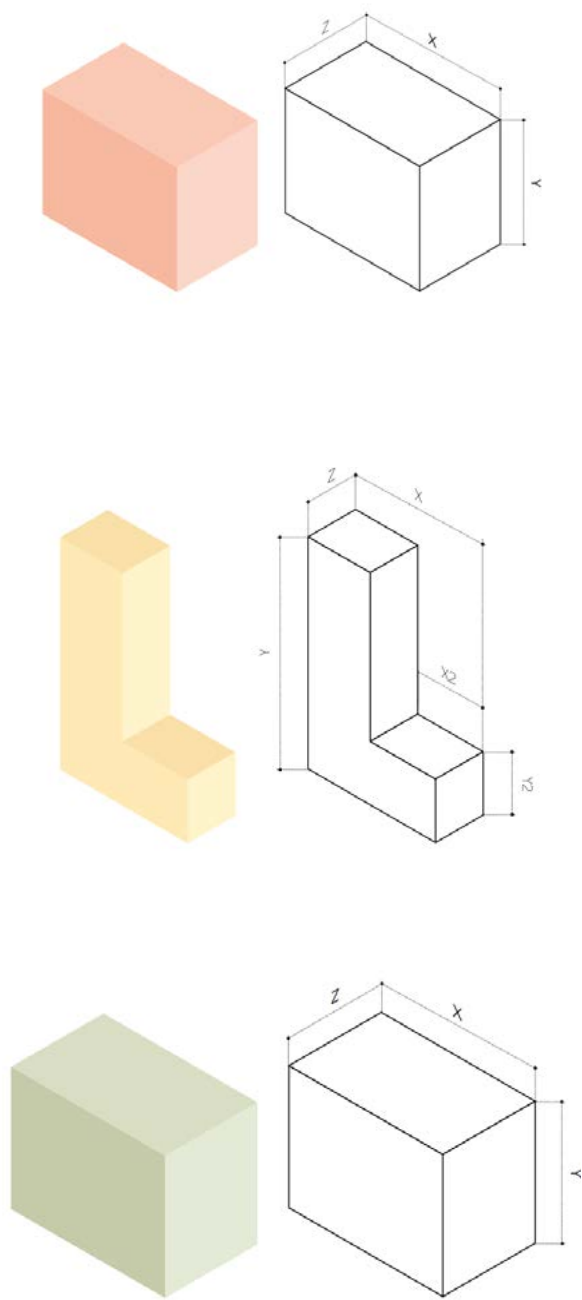
Code	Description
OKM-BL-214	PU Block 700x605x605mm

Massons Healthcare Materials Catalogue 2021

EVA FOAMS + PADDING & COVERING

RIGID CUT BLOCK

Rigid cut polyurethane blocks.  
Possibility to cut following your needs (consult).  
Available in densities 40, 50, 70, 100, 120 and 150 kg/m3.  
Below most commonly used densities and sizes. Contact us for any special requirements.



Code	Description
OKM-BLC70200	BLC D70 200x200x200 hole 30x42mm P(100mm)
OKM-BLC70500-2	BLC D70 500x300x200 hole 30x42mm P(100mm)
OKM-BLC70500-3	BLC D70 500x300x200 hole 30x42mm P(100mm), Horizontal
OKM-BLC70400-1	BLC D70 400x250x150 hole 32.5x42mm P(100mm), Horizontal
OKM-BLC70600-4	BLC D70 600x300x200 hole 32.5x42mm P(100mm), Horizontal

Code	Description
OKM-BLCPK1	PU Block HD L 970x390x260mm hole 28(500mm) + hole 42(60mm)
OKM-BLCPK2	PU Block 750x350x150mm hole 28(500mm) + hole 42(60mm)
OKM-BLCPK3	PU Block 550x350x150mm hole 28(250mm) + hole 42(60mm)
OKM-BLCPK4	PU Block 250x200x110mm hole 14mm(150mm) + hole 17mm(60mm)

Code	Description
OKM-BLC50-C-1	BLC D70 680x415x385
OKM-BLC50-C-2	BLC D50 700x440x385





XDRY PADDING MATERIAL

The padding material has a skin-friendly towelling coating on one side and a velour coating on the reverse side.

The padding material is antimicrobial and can be washed at 60°C.

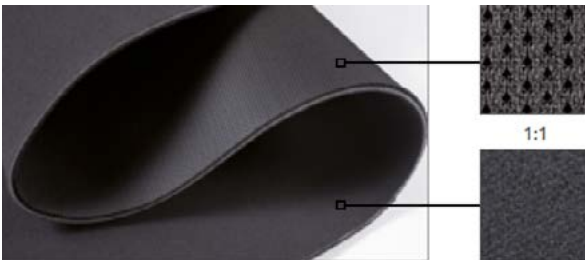
Use the hook dots or the hook tape (see below) to attach the padding material firmly to an orthosis.

When cutting the material with pinking shears, there are no frayed edges.

This means that you get a functional edge which does not need to be linked.

Code	Description
FG-PL3697-02/1	xDRY towelling padding material, 2mm PU foam layer, black, 1000x1170x4mm
FG-PL3697-02/2	xDRY towelling padding material, 2mm PU foam layer, blue 1000x1170x4mm
FG-PL3697-02/3	xDRY towelling padding material, 2mm PU foam layer, beige 1000x1170x4mm
FG-PL3697-02/4	xDRY towelling padding material, 2mm PU foam layer, Grey 1000x1170x4mm

UPHOLSTERY FABRICS



Fabrics for finishing seats and posture beds.

OKM has a wide range of fabrics with different features to cover each patient's needs.

These covers are washable and very strong.

The range includes waterproofing fabrics, spacer fabrics, breathable and thermoformable fabrics, etc.

Contact us for more information about custom made

Spacer fabric printed with your own design or color.

Code	Description
OKM-TAP-3D-V-N	Black 3D velours fabric (1000x1450)

THIS PAGE HAS BEEN LEFT INTENTIONALLY BLANK



PLASTICS

We are proud to be the exclusive distributor for Orfit, along with other leading plastics manufacturers for our regions.

Our offering is diverse with rigid, flexible or semi flexible plastics and silicones.

We are happy to help with any support or technical questions regarding our products.

Call Us: +61(3) 9898 0011  
info@massonshealthcare.com.au  
Unit 15/111 Lewis Road, Knoxfield 3180 VIC Australia  
Mon-Fri: 9:00am to 5:00pm

\*\*More products available upon request - see pricelist for full range\*\*





PLASTICS

ORFIT PLASTICS

Orfitrans is a high melting temperature thermoplastic material for the production of external orthoses, prosthetic check & flexible inner sockets. The Orfitrans product family consists of different thermoplastic materials that have been specifically developed to provide solutions for a wide range of orthotic and prosthetic applications.

- > **Orfitrans Stiff** is a very stiff clear material with high impact resistance.
- > **Orfitrans Medium Soft** is the perfect material for transtibial and transfemoral sockets.
- > **Orfitrans Excel** is a semi-transparent PE-Copolymer for flexible prosthetic sockets.
- > **Orfitrans Excel Black** is a black PE-Copolymer for flexible sockets.
- > **Orfitrans Extra Soft** is a semi-transparent and flexible material.
- > **Orfitrans Extra Soft Silicone** is an off-white, flexible material.

Code	Description
ORF-37ST/4480	Orfit Stiff, 400 x 400 x 8 mm
ORF-37ST/44100	Orfit Stiff 400 x 400 x 10 mm
ORF-37ST/44120	Orfit Stiff 400 x 400 x 12 mm
ORF-37ST/44150	Orfit Stiff 400 x 400 x 15 mm
ORF-37SS42/4480	Orfit Trans Excel, 400 x 400 x 8 mm
ORF-37SS42/44100	Orfit Trans Excel, 400 x 400 x 10 mm
ORF-37SS42/44120	Orfit Trans Excel, 400 x 400 x 12 mm
ORF-37SS42/44150	Orfit Trans Excel, 400 x 400 x 15 mm
ORF-37SS42/1225122530	Orfit Trans Excel, 1225 x 1225 x 3 mm
ORF-37SS42/1225122540	Orfit Trans Excel, 1225 x 1225 x 4 mm
ORF-37SS42/1225122550	Orfit Trans Excel, 1225 x 1225 x 5 mm
ORF-37SS42/4480Z	Orfit Trans Excel Black, 400 x 400 x 8 mm
ORF-37SS42/44100Z	Orfit Trans Excel Black, 400 x 400 x 10 mm
ORF-37SS42/44120Z	Orfit Trans Excel Black, 400 x 400 x 12 mm
ORF-37SS42/44150Z	Orfit Trans Excel Black, 400 x 400 x 15 mm
ORF-37SU/4447	Orfit Trans Soft, 400 x 400 x 4.7 mm
ORF-37SU/4463	Orfit Trans Soft, 400 x 400 x 6.3 mm
ORF-37SU/4485	Orfit Trans Soft, 400 x 400 x 8.5 mm
ORF-37SU/44115	Orfit Trans Soft, 400 x 400 x 11.5 mm
ORF-37SS/4480	Orfit Trans Medium Soft, 400 x 400 x 8 mm
ORF-37SS/44100	Orfit Trans Medium Soft, 400 x 400 x 10 mm
ORF-37SS/44120	Orfit Trans Medium Soft, 400 x 400 x 12 mm
ORF-37SS/44150	Orfit Trans Medium Soft, 400 x 400 x 15 mm
ORF-37SS62/4490	Orfit Trans Extra Soft, 400 x 400 x 9 mm
ORF-37SS62/44120	Orfit Trans Extra Soft, 400 x 400 x 12 mm
ORF-37SIL/4490	Orfit Trans Extra Soft Silicone, 400 x 400 x 9 mm
ORF-37SIL/44120	Orfit Trans Extra Soft Silicone, 400 x 400 x 12 mm

PLASTICS



ORFITRANS STIFF



ORFITRANS MEDIUM SOFT



ORFITRANS EXCEL



ORFITRANS EXCEL BLACK



ORFITRANS EXTRA SOFT



ORFITRANS EXTRA SOFT SILICONE

PLASTICS

ORFIT IN ORTHOTICS

Orfitrans is not only used for prosthetics. It is also a great material to fabricate an AFO (Ankle Foot Orthosis). In this AFO Orfitrans Excel 4 mm was used for the inner boot of the orthosis.



PLASTICS

SILICON STS

Silicon STS is a thermoformable sheet material which can be used to manufacture individual splints and masks for scar treatment. Its special feature is the unique combination of a silicone elastomer which has been applied directly onto the backing material. The backing material consists of polyester, and makes for high stability despite the material's low total thickness.



Code	Description
TF-BM.4192	Silon STS / White / 1.5x300x410mm
TF-BM.4192T	Silon STS / White / 3x300x410mm



Massons Healthcare Materials Catalogue 2021

# STRAPS BUCKLES PADS & ACCESSORIES

Our wide range of straps, buckles, pads and accessories ensures that you have the right part for the job.

We distribute high quality components which are designed to last. As with our other products, our straps, buckles, pads and accessories are used for our own patients so we know which components work well.

We are happy to help with any support or technical questions regarding our products.

Call Us: +61(3) 9898 0011  
info@massonshealthcare.com.au  
Unit 15/111 Lewis Road, Knoxfield 3180 VIC Australia  
Mon-Fri: 9:00am to 5:00pm

\*\*More products available upon request - see pricelist for full range\*\*





## STRAPS BUCKLES PADS &amp; ACCESSORIES

## QuickFit™ Lacer\*



## QUICKFIT LACER

With QuickFit™ Lacers, you can add on easy one-handed adjustability to dial in fit.

Code	Size	Description
CM-OK0180-130-05	QuickFit Lacer X Small	Designed for custom pediatric footwear size 35 EU and smaller. Comes with low-profile dial and 4 guides. Rivets sold separately.
CM-OK0200-130-05	QuickFit Lacer Small	Designed for footwear size 41 EU and smaller. Comes with a low-profile dial and 6 guides. Rivets sold separately.
CM-OK0220-130-05	QuickFit Lacer Medium	Designed for footwear size 42 EU and larger. Comes with a low profile dial and 8 guides. Rivets sold separately.
CM-OK0240-220-05	QuickFit Lacer Large	Designed for AFO's and above the ankle boots. Comes with a more powerful dial and 10 guides. Rivets sold separately.



## QUICKFIT LACER STARTER PACK

Everything you need to start using QuickFit™ Lacers. Includes:

- 10 QuickFit™ Lacers (2 x Extra Small, 4 x Small, 4 x Medium)
- QuickFit™ Tool
- 100-pack of Rivets

Code	Description
CM-OK0260-130-05	QuickFit Lacer Starter Pack



## QUICKFIT TOOL

Recommended installation tool. Customized for use with QuickFit Rivets. Properly secures rivets and provides appropriate hole-punch for creating rivet holes when needed.

Code	Description
CM-TL001	QuickFit Tool

## STRAPS BUCKLES PADS &amp; ACCESSORIES

QuickFit™ Rivets  
100 pack

## QUICKFIT RIVETS 100PACK

Available in packs of 100. Rivet pack is required to install any QuickFit Lacer Kit. Rivets are not included with QuickFit Lacer Kits.

Code	Description
CM-SP1040	QuickFit Rivets 100 Pack

## QuickFit™ Lacer Multi-Packs



## QUICKFIT LACER MULTI PACKS

Code	Description
CM-OK0185-130-05	QuickFit Lacer Multi Pack X Small
CM-OK0205-130-05	QuickFit Lacer Multi Pack Small
CM-OK0225-130-05	QuickFit Lacer Multi Pack Medium
CM-OK0245-230-05	QuickFit Lacer Multi Pack Large

## QuickFit™ Lacer Replacement Kit



## QuickFit™ Lacer Replacement Kit



## QUICKFIT LACER REPLACEMENT KITS

Code	Description
CM-RP0200-130-05	QuickFit Lacer Replacement Kit X Small Small Medium
CM-RP0200-230-05	QuickFit Lacer Replacement Kit Large



## QUICKFIT RELEASING

Code	Description
CM-OK0165-230	QF Releasing Lacer Large



## STRAPS BUCKLES PADS &amp; ACCESSORIES



## QUICKFIT STRAP

Empower patients to quickly and easily control fit and comfort throughout the day. Each "click" of the dial moves the strap 1mm for the perfect fit every time.

Code	Description
CM-OK1400-130-05	QuickFit Strap, 1" (25mm), Black
CM-OK1410-130-05	QuickFit Strap, 1.5" (38mm), Black
CM-OK1420-130-05	QuickFit Strap, 2" (50mm), Black



## QUICKFIT BUCKLE

QuickFit Buckle design allows straps to last the life of the product by eliminating repetitive hooking and unhooking of Velcro.

Code	Description
CM-OK1405-000-05	QuickFit Buckle 1" (25mm) Black
CM-OK1415-000-05	QuickFit Buckle 1.5" (38mm) Black
CM-OK1425-000-05	QuickFit Buckle 2" (50mm) Black

## UNI-GRIP

Code	Description
UNIGRIP	Uni-Grip, 1 Sheet of 4 Strips



## STRAPS BUCKLES PADS &amp; ACCESSORIES



## STRAPS &amp; BUCKLES

## Colour Codes

BGRN = Bright Green	BLU = Blue
RED = Red	YEL = Yellow
CF = Carbon Fibre	SKIN = Skin
BPK = Bright Pink	WHT = White
BLK = Black	

Kit Codes (Insert required colour code)	Strap Size (Trimmable) W x L	Description (Insert colour required into description)
LT-SK ____/20	20 X 300MM	Strap Kit 20mm - 3/4" _____ x1
LT-SK ____/25	25 X 500MM	Strap Kit 25mm - 1" _____ x1
LT-SK ____/38	38 X 500MM	Strap Kit 38mm - 1 1/2" _____ x1
LT-SK ____/50	50 X 500MM	Strap Kit 50mm - 2" _____ x1

Individual Strap Codes (Insert required colour code)	Strap Size (Trimmable) W x L	Description (Insert colour required into description)
STPPVC ____/0.75	20 X 300MM	Strap, 3/4" x 12" (20 x 300MM) _____ x1
STPPVC ____/1	25 X 500MM	Strap, 1" x 20" (25 x 500MM) _____ x1
STPPVC ____/1.5	38 X 500MM	Strap, 1.5" x 16" (38 x 500MM) _____ x1
STPPVC ____/2	50 X 500MM	Strap, 2" x 20" (50 x 500MM) _____ x1

Individual Pad Codes (Insert required colour code)	Strap Size (Trimmable) W x L	Description (Insert colour required into description)
SPADPVC ____/S	30 X 65MM	Pad S to fit 20mm Strap _____ x1
SPADPVC ____/M	50 X 140MM	Pad S to fit 25mm Strap _____ x1
SPADPVC ____/L	64 X 140MM	Pad S to fit 38mm Strap _____ x1
SPADPVC ____/XL	74 X 140MM	Pad S to fit 50mm Strap _____ x1

Individual Strap Code (Insert required colour code)	Strap Size (Trimmable) W x L	Description (Insert colour required into description)
SCHPVC ____/0.75	20 X 45MM	Chafe 3/4" (20mm) _____ PVC with SS Loop x1
SCHPVC ____/1	25 X 50MM	Chafe 1" (25mm) _____ PVC with SS Loop x1
SCHPVC ____/1.5	38 X 53MM	Chafe 1 1/2" (38mm) _____ PVC with SS Loop x1
SCHPVC ____/2	50 X 53MM	Chafe 2" (50mm) _____ PVC with SS Loop x1

## STRAPS BUCKLES PADS & ACCESSORIES



### SEW QUALITY HOOK

Code	Description
WBC-58WH	WBC BRAND 5/8" HOOK WHITE, SEW QUALITY
WBC-34WH	WBC BRAND 3/4" HOOK WHITE, SEW QUALITY
WBC-1WH	WBC BRAND 1" HOOK WHITE, SEW QUALITY
WBC-15WH	WBC BRAND 1.5" HOOK WHITE, SEW QUALITY
WBC-2WH	WBC BRAND 2" HOOK WHITE, SEW QUALITY
WBC-4WH	WBC BRAND 4" HOOK WHITE, SEW QUALITY
WBC-58BH	WBC BRAND 5/8" HOOK BEIGE, SEW QUALITY
WBC-34BH	WBC BRAND 3/4" HOOK BEIGE, SEW QUALITY
WBC-1BH	WBC BRAND 1" HOOK BEIGE, SEW QUALITY
WBC-15BH	WBC BRAND 1.5" HOOK BEIGE, SEW QUALITY
WBC-2BH	WBC BRAND 2" HOOK BEIGE, SEW QUALITY
WBC-4BH	WBC BRAND 4" HOOK BEIGE, SEW QUALITY
WBC-58LH	WBC BRAND 5/8" HOOK BLACK, SEW QUALITY
WBC-34LH	WBC BRAND 3/4" HOOK BLACK, SEW QUALITY
WBC-1LH	WBC BRAND 1" HOOK BLACK, SEW QUALITY
WBC-15LH	WBC BRAND 1.5" HOOK BLACK, SEW QUALITY
WBC-2LH	WBC BRAND 2" HOOK BLACK, SEW QUALITY
WBC-4LH	WBC BRAND 4" HOOK BLACK, SEW QUALITY

## STRAPS BUCKLES PADS & ACCESSORIES



### SEW QUALITY LOOP

Code	Description
WBC-58WL	WBC BRAND 5/8" LOOP WHITE, SEW QUALITY
WBC-34WL	WBC BRAND 3/4" LOOP WHITE, SEW QUALITY
WBC-1WL	WBC BRAND 1" LOOP WHITE, SEW QUALITY
WBC-15WL	WBC BRAND 1.5" LOOP WHITE, SEW QUALITY
WBC-2WL	WBC BRAND 2" LOOP WHITE, SEW QUALITY
WBC-4WL	WBC BRAND 4" LOOP WHITE, SEW QUALITY
WBC-58BL	WBC BRAND 5/8" LOOP BEIGE, SEW QUALITY
WBC-34BL	WBC BRAND 3/4" LOOP BEIGE, SEW QUALITY
WBC-1BL	WBC BRAND 1" LOOP BEIGE, SEW QUALITY
WBC-15BL	WBC BRAND 1.5" LOOP BEIGE, SEW QUALITY
WBC-2BL	WBC BRAND 2" LOOP BEIGE, SEW QUALITY
WBC-4BL	WBC BRAND 4" LOOP BEIGE, SEW QUALITY
WBC-58LL	WBC BRAND 5/8" LOOP BLACK, SEW QUALITY
WBC-34LL	WBC BRAND 3/4" LOOP BLACK, SEW QUALITY
WBC-1LL	WBC BRAND 1" LOOP BLACK, SEW QUALITY
WBC-15LL	WBC BRAND 1.5" LOOP BLACK, SEW QUALITY
WBC-2LL	WBC BRAND 2" LOOP BLACK, SEW QUALITY
WBC-4LL	WBC BRAND 4" LOOP BLACK, SEW QUALITY



STRAPS BUCKLES PADS & ACCESSORIES



SEW QUALITY HOOK & LOOP

Available Colors: Red, Yellow, Kelly Green, Purple, Orange, Royal Blue, Light Gray, Slate Gray, Light Blue, Pink, Brown, Navy Blue, Olive Green, Neon Yellow, Neon Orange, Neon Green, Neon Pink, Burgundy.

Code	Description
WBC-58H	WBC BRAND 5/8" HOOK, SEW QUALITY (PLEASE INDICATE COLOR)
WBC-58L	WBC BRAND 5/8" LOOP, SEW QUALITY (PLEASE INDICATE COLOR)
WBC-34H	WBC BRAND 3/4" HOOK, SEW QUALITY (PLEASE INDICATE COLOR)
WBC-34L	WBC BRAND 3/4" LOOP, SEW QUALITY (PLEASE INDICATE COLOR)
WBC-1H	WBC BRAND 1" HOOK, SEW QUALITY (PLEASE INDICATE COLOR)
WBC-1L	WBC BRAND 1" LOOP, SEW QUALITY (PLEASE INDICATE COLOR)
WBC-15H	WBC BRAND 1.5" HOOK, SEW QUALITY (PLEASE INDICATE COLOR)
WBC-15L	WBC BRAND 1.5" LOOP, SEW QUALITY (PLEASE INDICATE COLOR)
WBC-2H	WBC BRAND 2" HOOK, SEW QUALITY (PLEASE INDICATE COLOR)
WBC-2L	WBC BRAND 2" LOOP, SEW QUALITY (PLEASE INDICATE COLOR)

STRAPS BUCKLES PADS & ACCESSORIES



HOOK & LOOP PRESSURE SENSITIVE RUBBER ADHESIVE

Code	Description
WBC-58WHPS	WBC BRAND 5/8" HOOK WHITE, PRESSURE SENSITIVE
WBC-34WHPS	WBC BRAND 3/4" HOOK WHITE, PRESSURE SENSITIVE
WBC-1WHPS	WBC BRAND 1" HOOK WHITE, PRESSURE SENSITIVE
WBC-15WHPS	WBC BRAND 1.5" HOOK WHITE, PRESSURE SENSITIVE
WBC-2WHPS	WBC BRAND 2" HOOK WHITE, PRESSURE SENSITIVE
WBC-4WHPS	WBC BRAND 4" HOOK WHITE, PRESSURE SENSITIVE
WBC-58BHPS	WBC BRAND 5/8" HOOK BEIGE, PRESSURE SENSITIVE
WBC-34BHPS	WBC BRAND 3/4" HOOK BEIGE, PRESSURE SENSITIVE
WBC-1BHPS	WBC BRAND 1" HOOK BEIGE, PRESSURE SENSITIVE
WBC-15BHPS	WBC BRAND 1.5" HOOK BEIGE, PRESSURE SENSITIVE
WBC-2BHPS	WBC BRAND 2" HOOK BEIGE, PRESSURE SENSITIVE
WBC-4BHPS	WBC BRAND 4" HOOK BEIGE, PRESSURE SENSITIVE

Massons Healthcare Materials Catalogue 2021

# STRAPS BUCKLES PADS & ACCESSORIES



## HOOK & LOOP PRESSURE SENSITIVE RUBBER ADHESIVE

Code	Description
WBC-58LHPS	WBC BRAND 5/8" HOOK BLACK, PRESSURE SENSITIVE
WBC-34LHPS	WBC BRAND 3/4" HOOK BLACK, PRESSURE SENSITIVE
WBC-1LHPS	WBC BRAND 1" HOOK BLACK, PRESSURE SENSITIVE
WBC-15LHPS	WBC BRAND 1.5" HOOK BLACK, PRESSURE SENSITIVE
WBC-2LHPS	WBC BRAND 2" HOOK BLACK, PRESSURE SENSITIVE
WBC-4LHPS	WBC BRAND 4" HOOK BLACK, PRESSURE SENSITIVE

Massons Healthcare Materials Catalogue 2021

# STRAPS BUCKLES PADS & ACCESSORIES



## HOOK & LOOP PRESSURE SENSITIVE RUBBER ADHESIVE

Code	Description
WBC-58WLPS	WBC BRAND 5/8" LOOP WHITE, PRESSURE SENSITIVE
WBC-34WLPS	WBC BRAND 3/4" LOOP WHITE, PRESSURE SENSITIVE
WBC-1WLPS	WBC BRAND 1" LOOP WHITE, PRESSURE SENSITIVE
WBC-15WLPS	WBC BRAND 1.5" LOOP WHITE, PRESSURE SENSITIVE
WBC-2WLPS	WBC BRAND 2" LOOP WHITE, PRESSURE SENSITIVE
WBC-4WLPS	WBC BRAND 4" LOOP WHITE, PRESSURE SENSITIVE
WBC-58BLPS	WBC BRAND 5/8" LOOP BEIGE, PRESSURE SENSITIVE
WBC-34BLPS	WBC BRAND 3/4" LOOP BEIGE, PRESSURE SENSITIVE
WBC-1BLPS	WBC BRAND 1" LOOP BEIGE, PRESSURE SENSITIVE
WBC-15BLPS	WBC BRAND 1.5" LOOP BEIGE, PRESSURE SENSITIVE
WBC-2BLPS	WBC BRAND 2" LOOP BEIGE, PRESSURE SENSITIVE
WBC-4BLPS	WBC BRAND 4" LOOP BEIGE, PRESSURE SENSITIVE
WBC-58LLPS	WBC BRAND 5/8" LOOP BLACK, PRESSURE SENSITIVE
WBC-34LLPS	WBC BRAND 3/4" LOOP BLACK, PRESSURE SENSITIVE
WBC-1LLPS	WBC BRAND 1" LOOP BLACK, PRESSURE SENSITIVE
WBC-15LLPS	WBC BRAND 1.5" LOOP BLACK, PRESSURE SENSITIVE
WBC-2LLPS	WBC BRAND 2" LOOP BLACK, PRESSURE SENSITIVE
WBC-4LLPS	WBC BRAND 4" LOOP BLACK, PRESSURE SENSITIVE



Massons Healthcare Materials Catalogue 2021

# STRAPS BUCKLES PADS & ACCESSORIES



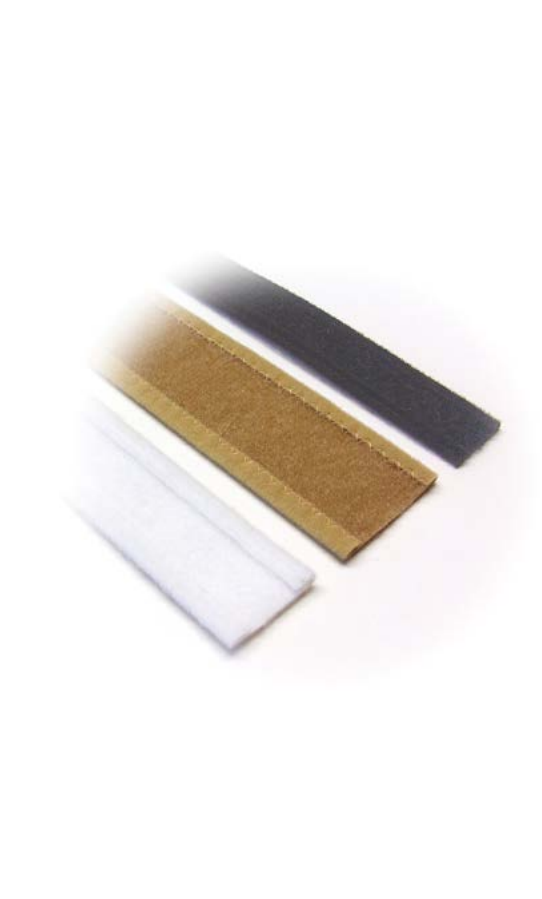
## HOOK & LOOP PRESSURE SENSITIVE RUBBER ADHESIVE

Available Colors: Red, Yellow, Kelly Green, Purple, Orange, Royal Blue, Light Gray, Slate Gray, Light Blue, Pink, Brown, Navy Blue, Olive Green, Neon Yellow, Neon Orange, Neon Green, Neon Pink, Burgundy.

Code	Description
WBC-58HPS	WBC BRAND 5/8" HOOK, PRESSURE SENSITIVE (PLEASE INDICATE COLOR)
WBC-58LPS	WBC BRAND 5/8" LOOP, PRESSURE SENSITIVE (PLEASE INDICATE COLOR)
WBC-34HPS	WBC BRAND 3/4" HOOK, PRESSURE SENSITIVE (PLEASE INDICATE COLOR)
WBC-34LPS	WBC BRAND 3/4" LOOP, PRESSURE SENSITIVE (PLEASE INDICATE COLOR)
WBC-1HPS	WBC BRAND 1" HOOK, PRESSURE SENSITIVE (PLEASE INDICATE COLOR)
WBC-1LPS	WBC BRAND 1" LOOP, PRESSURE SENSITIVE (PLEASE INDICATE COLOR)
WBC-15HPS	WBC BRAND 1.5" HOOK, PRESSURE SENSITIVE (PLEASE INDICATE COLOR)
WBC-15LPS	WBC BRAND 1.5" LOOP, PRESSURE SENSITIVE (PLEASE INDICATE COLOR)
WBC-2HPS	WBC BRAND 2" HOOK, PRESSURE SENSITIVE (PLEASE INDICATE COLOR)
WBC-2LPS	WBC BRAND 2" LOOP, PRESSURE SENSITIVE (PLEASE INDICATE COLOR)

Massons Healthcare Materials Catalogue 2021

# STRAPS BUCKLES PADS & ACCESSORIES



## C-FOLD

Nylon loop wrapped with knit loop and sewn on both sides. Excellent strapping material.

Code	Description
WBC-1WFOLD	C-FOLD 1" WHITE
WBC-15WFOLD	C-FOLD 1.5" WHITE
WBC-2WFOLD	C-FOLD 2" WHITE
WBC-1BFOLD	C-FOLD 1" BEIGE
WBC-15BFOLD	C-FOLD 1.5" BEIGE
WBC-2BFOLD	C-FOLD 2" BEIGE

## C-FOLD

Nylon loop wrapped with knit loop and sewn on both sides. Excellent strapping material.

Code	Description
WBC-1LFOLD	C-FOLD 1" BLACK
WBC-15LFOLD	C-FOLD 1.5" BLACK
WBC-2LFOLD	C-FOLD 2" BLACK



Massons Healthcare Materials Catalogue 2021

# STRAPS BUCKLES PADS & ACCESSORIES



## DACRON BACKED HOOK & LOOP STRAPS

High quality Dacron stitched with hook & loop. Great for body jackets.

Code	Description
WBC-1510WDS	1 1/2" X 10" WHITE DACRON-BACK HOOK/LOOP STRAPS, 10 Per Pack
WBC-1512WDS	1 1/2" X 12" WHITE DACRON-BACK HOOK/LOOP STRAPS
WBC-1516WDS	1 1/2" X 16" WHITE DACRON-BACK HOOK/LOOP STRAPS
WBC-1518WDS	1 1/2" X 18" WHITE DACRON-BACK HOOK/LOOP STRAPS
WBC-1520WDS	1 1/2" X 20" WHITE DACRON-BACK HOOK/LOOP STRAPS
WBC-1522WDS	1 1/2" X 22" WHITE DACRON-BACK HOOK/LOOP STRAPS

Massons Healthcare Materials Catalogue 2021

# STRAPS BUCKLES PADS & ACCESSORIES



## HOOK & LOOP PRESSURE SENSITIVE RUBBER ADHESIVE

Code	Description
WBC-58WLPS	WBC BRAND 5/8" LOOP WHITE, PRESSURE SENSITIVE
WBC-34WLPS	WBC BRAND 3/4" LOOP WHITE, PRESSURE SENSITIVE
WBC-1WLPS	WBC BRAND 1" LOOP WHITE, PRESSURE SENSITIVE
WBC-15WLPS	WBC BRAND 1.5" LOOP WHITE, PRESSURE SENSITIVE
WBC-2WLPS	WBC BRAND 2" LOOP WHITE, PRESSURE SENSITIVE
WBC-4WLPS	WBC BRAND 4" LOOP WHITE, PRESSURE SENSITIVE
WBC-58BLPS	WBC BRAND 5/8" LOOP BEIGE, PRESSURE SENSITIVE
WBC-34BLPS	WBC BRAND 3/4" LOOP BEIGE, PRESSURE SENSITIVE
WBC-1BLPS	WBC BRAND 1" LOOP BEIGE, PRESSURE SENSITIVE
WBC-15BLPS	WBC BRAND 1.5" LOOP BEIGE, PRESSURE SENSITIVE
WBC-2BLPS	WBC BRAND 2" LOOP BEIGE, PRESSURE SENSITIVE
WBC-4BLPS	WBC BRAND 4" LOOP BEIGE, PRESSURE SENSITIVE
WBC-58LLPS	WBC BRAND 5/8" LOOP BLACK, PRESSURE SENSITIVE
WBC-34LLPS	WBC BRAND 3/4" LOOP BLACK, PRESSURE SENSITIVE
WBC-1LLPS	WBC BRAND 1" LOOP BLACK, PRESSURE SENSITIVE
WBC-15LLPS	WBC BRAND 1.5" LOOP BLACK, PRESSURE SENSITIVE
WBC-2LLPS	WBC BRAND 2" LOOP BLACK, PRESSURE SENSITIVE
WBC-4LLPS	WBC BRAND 4" LOOP BLACK, PRESSURE SENSITIVE



## STRAPS BUCKLES PADS &amp; ACCESSORIES

## DACRON BACKED HOOK &amp; LOOP STRAPS

High quality Dacron stitched with hook & loop.  
Great for body jackets.



Code	Description
WBC-1510WDS	1 1/2" X 10" WHITE DACRON-BACK HOOK/LOOP STRAPS, 10 Per Pack
WBC-1512WDS	1 1/2" X 12" WHITE DACRON-BACK HOOK/LOOP STRAPS
WBC-1516WDS	1 1/2" X 16" WHITE DACRON-BACK HOOK/LOOP STRAPS
WBC-1518WDS	1 1/2" X 18" WHITE DACRON-BACK HOOK/LOOP STRAPS
WBC-1520WDS	1 1/2" X 20" WHITE DACRON-BACK HOOK/LOOP STRAPS
WBC-1522WDS	1 1/2" X 22" WHITE DACRON-BACK HOOK/LOOP STRAPS

## STRAPS BUCKLES PADS &amp; ACCESSORIES



## DACRON BACKED HOOK &amp; LOOP STRAPS

Code	Description
WBC-210WDS	2" X 10" WHITE DACRON-BACK HOOK/LOOP STRAPS
WBC-212WDS	2" X 12" WHITE DACRON-BACK HOOK/LOOP STRAPS
WBC-216WDS	2" X 16" WHITE DACRON-BACK HOOK/LOOP STRAPS
WBC-218WDS	2" X 18" WHITE DACRON-BACK HOOK/LOOP STRAPS
WBC-220WDS	2" X 20" WHITE DACRON-BACK HOOK/LOOP STRAPS
WBC-222WDS	2" X 22" WHITE DACRON-BACK HOOK/LOOP STRAPS
WBC-1510BDS	1 1/2" X 10" BEIGE DACRON-BACK HOOK/LOOP STRAPS
WBC-1512BDS	1 1/2" X 12" BEIGE DACRON-BACK HOOK/LOOP STRAPS
WBC-1516BDS	1 1/2" X 16" BEIGE DACRON-BACK HOOK/LOOP STRAPS
WBC-1518BDS	1 1/2" X 18" BEIGE DACRON-BACK HOOK/LOOP STRAPS
WBC-1520BDS	1 1/2" X 20" BEIGE DACRON-BACK HOOK/LOOP STRAPS
WBC-1522BDS	1 1/2" X 22" BEIGE DACRON-BACK HOOK/LOOP STRAPS
WBC-210BDS	2" X 10" BEIGE DACRON-BACK HOOK/LOOP STRAPS
WBC-212BDS	2" X 12" BEIGE DACRON-BACK HOOK/LOOP STRAPS
WBC-216BDS	2" X 16" BEIGE DACRON-BACK HOOK/LOOP STRAPS
WBC-218BDS	2" X 18" BEIGE DACRON-BACK HOOK/LOOP STRAPS
WBC-220BDS	2" X 20" BEIGE DACRON-BACK HOOK/LOOP STRAPS
WBC-222BDS	2" X 22" BEIGE DACRON-BACK HOOK/LOOP STRAPS
WBC-1510LDS	1 1/2" X 10" BLACK DACRON-BACK HOOK/LOOP STRAPS
WBC-1512LDS	1 1/2" X 12" BLACK DACRON-BACK HOOK/LOOP STRAPS
WBC-1516LDS	1 1/2" X 16" BLACK DACRON-BACK HOOK/LOOP STRAPS
WBC-1518LDS	1 1/2" X 18" BLACK DACRON-BACK HOOK/LOOP STRAPS
WBC-1520LDS	1 1/2" X 20" BLACK DACRON-BACK HOOK/LOOP STRAPS
WBC-1522LDS	1 1/2" X 22" BLACK DACRON-BACK HOOK/LOOP STRAPS
WBC-210LDS	2" X 10" BLACK DACRON-BACK HOOK/LOOP STRAPS
WBC-212LDS	2" X 12" BLACK DACRON-BACK HOOK/LOOP STRAPS
WBC-216LDS	2" X 16" BLACK DACRON-BACK HOOK/LOOP STRAPS
WBC-218LDS	2" X 18" BLACK DACRON-BACK HOOK/LOOP STRAPS
WBC-220LDS	2" X 20" BLACK DACRON-BACK HOOK/LOOP STRAPS
WBC-222LDS	2" X 22" BLACK DACRON-BACK HOOK/LOOP STRAPS

## STRAPS BUCKLES PADS &amp; ACCESSORIES

## 50/50 STRAPS

Soft flexible marine grade vinyl hook & loop.



Code	Description
WBC-LLS118L	1" X 18" BLACK VINYL-BACKED HOOK & LOOP STRAPS
WBC-LLS118W	1" X 18" WHITE VINYL-BACKED HOOK & LOOP STRAPS
WBC-LLS118SS	1" X 18" SANDSTONE VINYL-BACKED HOOK & LOOP STRAPS
WBC-LLS1518L	1.5" X 18" BLACK VINYL-BACKED HOOK & LOOP STRAPS
WBC-LLS1518W	1.5" X 18" WHITE VINYL-BACKED HOOK & LOOP STRAPS
WBC-LLS1518SS	1.5" X 18" SANDSTONE VINYL-BACKED HOOK & LOOP STRAPS
WBC-LLS218L	2" X 18" BLACK VINYL-BACKED HOOK & LOOP STRAPS
WBC-LLS218W	2" X 18" WHITE VINYL-BACKED HOOK & LOOP STRAPS
WBC-LLS218SS	2" X 18" SANDSTONE VINYL-BACKED HOOK & LOOP STRAPS

## AFO PADS

Orthopedic felt stitched to orthopedic vinyl.



Code	Description
WBC-6124S	5/8" WHITE AFO PADS
WBC-6124M	1" WHITE AFO PADS
WBC-6124L	1 1/2" WHITE AFO PADS
WBC-6124XL	2" WHITE AFO PADS
WBC-6124SB	5/8" BEIGE AFO PADS
WBC-6124MB	1" BEIGE AFO PADS
WBC-6124LB	1 1/2" BEIGE AFO PADS
WBC-6124XLB	2" BEIGE AFO PADS
WBC-6124SL	5/8" BLACK AFO PADS
WBC-6124ML	1" BLACK AFO PADS
WBC-6124LL	1 1/2" BLACK AFO PADS
WBC-6124XLL	2" BLACK AFO PADS

## STRAPS BUCKLES PADS &amp; ACCESSORIES

## SLENDER AFO PADS

Vertical slit openings for slender fit.



Code	Description
WBC-AFO1W	1 3/4"W x 2"H FELT SLENDER AFO PADS, WHITE
WBC-AFO15W	1 7/8"W x 2 5/8"H FELT SLENDER AFO PADS, WHITE
WBC-AFO2W	2 1/2"W x 3 3/8"H FELT SLENDER AFO PADS, WHITE
WBC-AFO1B	1 3/4"W x 2"H FELT SLENDER AFO PADS, BEIGE
WBC-AFO15B	1 7/8"W x 2 5/8"H FELT SLENDER AFO PADS, BEIGE
WBC-AFO2B	2 1/2"W x 3 3/8"H FELT SLENDER AFO PADS, BEIGE
WBC-AFO1L	1 3/4"W x 2"H FELT SLENDER AFO PADS, BLACK
WBC-AFO15L	1 7/8"W x 2 5/8"H FELT SLENDER AFO PADS, BLACK
WBC-AFO2L	2 1/2"W x 3 3/8"H FELT SLENDER AFO PADS, BLACK

## POLYESTER WEBBING



Code	Description
WBC-1WPOLYWEB	1" WHITE POLYESTER WEBBING
WBC-15WPOLYWEB	1.5" WHITE POLYESTER WEBBING
WBC-2WPOLYWEB	2" WHITE POLYESTER WEBBING
WBC-1LPOLYWEB	1" BLACK POLYESTER WEBBING
WBC-15LPOLYWEB	1.5" BLACK POLYESTER WEBBING
WBC-2LPOLYWEB	2" BLACK POLYESTER WEBBING



Massons Healthcare Materials Catalogue 2021

STRAPS BUCKLES PADS & ACCESSORIES

LIGHTWEIGHT COTTON WEBBING



Code	Description
WBC-CT108/38L	3/8" BLACK LIGHTWEIGHT COTTON WEBBING
WBC-CT108/38W	3/8" WHITE LIGHTWEIGHT COTTON WEBBING
WBC-CT108/38N	3/8" NATURAL LIGHTWEIGHT COTTON WEBBING
WBC-CT108/05L	1/2" BLACK LIGHTWEIGHT COTTON WEBBING
WBC-CT108/05W	1/2" WHITE LIGHTWEIGHT COTTON WEBBING
WBC-CT108/05N	1/2" NATURAL LIGHTWEIGHT COTTON WEBBING
WBC-CT108/58L	5/8" BLACK LIGHTWEIGHT COTTON WEBBING
WBC-CT108/58W	5/8" WHITE LIGHTWEIGHT COTTON WEBBING
WBC-CT108/58N	5/8" NATURAL LIGHTWEIGHT COTTON WEBBING
WBC-CT108/34L	3/4" BLACK LIGHTWEIGHT COTTON WEBBING
WBC-CT108/34W	3/4" WHITE LIGHTWEIGHT COTTON WEBBING
WBC-CT108/34N	3/4" NATURAL LIGHTWEIGHT COTTON WEBBING
WBC-CT108/1L	1" BLACK LIGHTWEIGHT COTTON WEBBING
WBC-CT108/1W	1" WHITE LIGHTWEIGHT COTTON WEBBING
WBC-CT108/1N	1" NATURAL LIGHTWEIGHT COTTON WEBBING
WBC-CT108/15L	1.5" BLACK LIGHTWEIGHT COTTON WEBBING
WBC-CT108/15W	1.5" WHITE LIGHTWEIGHT COTTON WEBBING
WBC-CT108/15N	1.5" NATURAL LIGHTWEIGHT COTTON WEBBING
WBC-CT108/2L	2" BLACK LIGHTWEIGHT COTTON WEBBING
WBC-CT108/2W	2" WHITE LIGHTWEIGHT COTTON WEBBING
WBC-CT108/2N	2" NATURAL LIGHTWEIGHT COTTON WEBBING
WBC-CT108/3L	3" BLACK LIGHTWEIGHT COTTON WEBBING
WBC-CT108/3W	3" WHITE LIGHTWEIGHT COTTON WEBBING
WBC-CT108/3N	3" NATURAL LIGHTWEIGHT COTTON WEBBING

Massons Healthcare Materials Catalogue 2021

STRAPS BUCKLES PADS & ACCESSORIES

HEAVYWEIGHT COTTON WEBBING



Code	Description
WBC-CT702H/1W	1" WHITE HEAVYWEIGHT COTTON WEBBING
WBC-CT702H/1N	1" NATURAL HEAVYWEIGHT COTTON WEBBING
WBC-CT702H/15W	1.5" WHITE HEAVYWEIGHT COTTON WEBBING
WBC-CT702H/15N	1.5" NATURAL HEAVYWEIGHT COTTON WEBBING
WBC-CT702H/2W	2" WHITE HEAVYWEIGHT COTTON WEBBING
WBC-CT702H/2N	2" NATURAL HEAVYWEIGHT COTTON WEBBING

DACRON TAPE STITCHED LOOP



Code	Description
WBC-DL1W	1" WHITE DACRON TAPE STITCHED TO LOOP
WBC-DL15W	1.5" WHITE DACRON TAPE STITCHED TO LOOP
WBC-DL2W	2" WHITE DACRON TAPE STITCHED TO LOOP
WBC-DL1B	1" BEIGE DACRON TAPE STITCHED TO LOOP
WBC-DL15B	1.5" BEIGE DACRON TAPE STITCHED TO LOOP
WBC-DL2B	2" BEIGE DACRON TAPE STITCHED TO LOOP
WBC-DL1L	1" BLACK DACRON TAPE STITCHED TO LOOP
WBC-DL15L	1.5" BLACK DACRON TAPE STITCHED TO LOOP
WBC-DL2L	2" BLACK DACRON TAPE STITCHED TO LOOP
WBC-1LWL	1" BLACK UNNAPPED LOOP WOVEN NYLON WEBBING(NONSTITCHED)

## STRAPS BUCKLES PADS &amp; ACCESSORIES

## ARTIFICIAL LIMB ELASTIC



Code	Description
WBC-ALE1W	1" WHITE ARTIFICIAL LIMB ELASTIC
WBC-ALE15W	1 1/2" WHITE ARTIFICIAL LIMB ELASTIC
WBC-ALE2W	2" WHITE ARTIFICIAL LIMB ELASTIC
WBC-ALE1G	1" GRAY ARTIFICIAL LIMB ELASTIC
WBC-ALE15G	1 1/2" GRAY ARTIFICIAL LIMB ELASTIC
WBC-ALE2G	2" GRAY ARTIFICIAL LIMB ELASTIC

## DACRON WEBBING



Code	Description
WBC-05WDAC	WHITE DACRON 1/2"
WBC-58WDAC	WHITE DACRON 5/8"
WBC-34WDAC	WHITE DACRON 3/4"
WBC-1WDAC	WHITE DACRON 1"
WBC-15WDAC	WHITE DACRON 1.5"
WBC-2WDAC	WHITE DACRON 2"
WBC-05BDAC	BEIGE DACRON 1/2"
WBC-58BDAC	BEIGE DACRON 5/8"
WBC-34BDAC	BEIGE DACRON 3/4"
WBC-1BDAC	BEIGE DACRON 1"
WBC-15BDAC	BEIGE DACRON 1.5"
WBC-2BDAC	BEIGE DACRON 2"
WBC-05LDAC	BLACK DACRON 1/2"
WBC-58LDAC	BLACK DACRON 5/8"
WBC-34LDAC	BLACK DACRON 3/4"
WBC-1LDAC	BLACK DACRON 1"
WBC-15LDAC	BLACK DACRON 1.5"
WBC-2LDAC	BLACK DACRON 2"

## STRAPS BUCKLES PADS &amp; ACCESSORIES

## CHAFES



Code	Description
WBC-1WCHE	1" WHITE CHAFE
WBC-15WCHE	1.5" WHITE CHAFE
WBC-2WCHE	2" WHITE CHAFE
WBC-1BCHE	1" BEIGE CHAFE
WBC-15BCHE	1.5" BEIGE CHAFE
WBC-2BCHE	2" BEIGE CHAFE
WBC-1LCHE	1" BLACK CHAFE
WBC-15LCHE	1.5" BLACK CHAFE
WBC-2LCHE	2" BLACK CHAFE

## CHAFES WITH METAL LINKS



Code	Description
WBC-34MWCHE	3/4" WHITE CHAFE WITH METAL LINK
WBC-1MWCHE	1" WHITE CHAFE WITH METAL LINK
WBC-15MWCHE	1.5" WHITE CHAFE WITH METAL LINK
WBC-2MWCHE	2" WHITE CHAFE WITH METAL LINK
WBC-34MBCHE	3/4" BEIGE CHAFE WITH METAL LINK
WBC-1MBCHE	1" BEIGE CHAFE WITH METAL LINK
WBC-15MBCHE	1.5" BEIGE CHAFE WITH METAL LINK
WBC-2MBCHE	2" BEIGE CHAFE WITH METAL LINK
WBC-34MLCHE	3/4" BLACK CHAFE WITH METAL LINK
WBC-1MLCHE	1" BLACK CHAFE WITH METAL LINK
WBC-15MLCHE	1.5" BLACK CHAFE WITH METAL LINK
WBC-2MLCHE	2" BLACK CHAFE WITH METAL LINK



Massons Healthcare Materials Catalogue 2021

STRAPS BUCKLES PADS & ACCESSORIES



CHAFES WITH ROLLER RINGS

Code	Description
WBC-1MWCHERR	1" WHITE CHAFE WITH ROLLER RINGS
WBC-15MWCHERR	1.5" WHITE CHAFE WITH ROLLER RINGS
WBC-2MWCHERR	2" WHITE CHAFE WITH ROLLER RINGS
WBC-1MBCHERR	1" BEIGE CHAFE WITH ROLLER RINGS
WBC-15MBCHERR	1.5" BEIGE CHAFE WITH ROLLER RINGS
WBC-2MBCHERR	2" BEIGE CHAFE WITH ROLLER RINGS
WBC-1MLCHERR	1" BLACK CHAFE WITH ROLLER RINGS
WBC-15MLCHERR	1.5" BLACK CHAFE WITH ROLLER RINGS
WBC-2MLCHERR	2" BLACK CHAFE WITH ROLLER RINGS



PLASTIC CONCAVE LOOP CHAFE

Code	Description
WBC-1CWCHE	1" WHITE PLASTIC CONCAVE LOOP WITH CHAFE
WBC-15CWCHE	1 1/2" WHITE PLASTIC CONCAVE LOOP WITH CHAFE
WBC-2CWCHE	2" WHITE PLASTIC CONCAVE LOOP WITH CHAFE
WBC-1CBCHE	1" BEIGE PLASTIC CONCAVE LOOP WITH CHAFE
WBC-15CBCHE	1 1/2" BEIGE PLASTIC CONCAVE LOOP WITH CHAFE
WBC-2CBCHE	2" BEIGE PLASTIC CONCAVE LOOP WITH CHAFE
WBC-1CLCHE	1" BLACK PLASTIC CONCAVE LOOP WITH CHAFE
WBC-15CLCHE	1 1/2" BLACK PLASTIC CONCAVE LOOP WITH CHAFE
WBC-2CLCHE	2" BLACK PLASTIC CONCAVE LOOP WITH CHAFE

Massons Healthcare Materials Catalogue 2021

STRAPS BUCKLES PADS & ACCESSORIES



BLACK CHAFES WITH BLACK METAL LINKS

Code	Description
WBC-1MLCHE-L	1" BLACK CHAFES WITH BLACK METAL LINK
WBC-15MLCHE-L	1.5" BLACK CHAFES WITH BLACK METAL LINK
WBC-2MLCHE-L	2" BLACK CHAFES WITH BLACK METAL LINK

## STRAPS BUCKLES PADS & ACCESSORIES

### JIFFY RIVETS SINGLE CAP STYLE

Eyelet open on bottom.



Code	Description
WBC-307SC	Small Size Cap-7mm Diameter, 7mm eyelet Jiffy Rivets - Single Cap
WBC-309SC	Small Size Cap-7mm Diameter, 9mm eyelet Jiffy Rivets - Single Cap
WBC-311SC	Small Size Cap-7mm Diameter, 11 eyelet Jiffy Rivets - Single Cap
WBC-407SC	Medium Size Cap-9mm Diameter, 7mm eyelet Jiffy Rivets - Single Cap
WBC-409SC	Medium Size Cap-9mm Diameter, 9mm eyelet Jiffy Rivets - Single Cap
WBC-510SC	Large Size Cap-11mm Diameter, 10mm eyelet Jiffy Rivets - Single Cap
WBC-512SC	Large Size Cap-11mm Diameter, 12mm eyelet Jiffy Rivets - Single Cap
WBC-618SC	Jumbo Size Cap-13mm Diameter, 18mm eyelet Jiffy Rivets - Single Cap
WBC-307SB	Small Size Cap-7mm Diameter, 7mm eyelet Jiffy Rivets - Single Cap
WBC-309SB	Small Size Cap-7mm Diameter, 9mm eyelet Jiffy Rivets - Single Cap
WBC-311SB	Small Size Cap-7mm Diameter, 11 eyelet Jiffy Rivets - Single Cap
WBC-407SB	Medium Size Cap-9mm Diameter, 7mm eyelet Jiffy Rivets - Single Cap
WBC-409SB	Medium Size Cap-9mm Diameter, 9mm eyelet Jiffy Rivets - Single Cap
WBC-510SB	Large Size Cap-11mm Diameter, 10mm eyelet Jiffy Rivets - Single Cap
WBC-512SB	Large Size Cap-11mm Diameter, 12mm eyelet Jiffy Rivets - Single Cap
WBC-618SB	Jumbo Size Cap-13mm Diameter, 18mm eyelet Jiffy Rivets - Single Cap

## STRAPS BUCKLES PADS & ACCESSORIES

### JIFFY RIVETS DOUBLE CAP STYLE

Eyelet closed on bottom.



Code	Description
WBC-206DC	Baby Size Cap-6mm Diameter, 6.5mm eyelet Jiffy Rivets-Double Cap
WBC-307DC	Small Size Cap-7mm Diameter, 7mm eyelet Jiffy Rivets-Double Cap
WBC-309DC	Small Size Cap-7mm Diameter, 9mm eyelet Jiffy Rivets-Double Cap
WBC-311DC	Small Size Cap-7mm Diameter, 11 eyelet Jiffy Rivets-Double Cap
WBC-407DC	Medium Size Cap-9mm Diameter, 7mm eyelet Jiffy Rivets-Double Cap
WBC-409DC	Medium Size Cap-9mm Diameter, 9mm eyelet Jiffy Rivets-Double Cap
WBC-510DC	Large Size Cap-11mm Diameter, 10mm eyelet Jiffy Rivets-Double Cap
WBC-512DC	Large Size Cap-11mm Diameter, 12mm eyelet Jiffy Rivets-Double Cap
WBC-515DC	Large Size Cap-11mm Diameter, 15mm eyelet Jiffy Rivets-Double Cap
WBC-618DC	Jumbo Size Cap-13mm Diameter, 18mm eyelet Jiffy Rivets-Double Cap
WBC-206DB	Baby Size Cap-6mm Diameter, 6.5mm eyelet Jiffy Rivets-Double Cap
WBC-307DB	Small Size Cap-7mm Diameter, 7mm eyelet Jiffy Rivets-Double Cap
WBC-309DB	Small Size Cap-7mm Diameter, 9mm eyelet Jiffy Rivets-Double Cap
WBC-311DB	Small Size Cap-7mm Diameter, 11 eyelet Jiffy Rivets-Double Cap
WBC-407DB	Medium Size Cap-9mm Diameter, 7mm eyelet Jiffy Rivets-Double Cap
WBC-409DB	Medium Size Cap-9mm Diameter, 9mm eyelet Jiffy Rivets-Double Cap
WBC-510DB	Large Size Cap-11mm Diameter, 10mm eyelet Jiffy Rivets-Double Cap
WBC-512DB	Large Size Cap-11mm Diameter, 12mm eyelet Jiffy Rivets-Double Cap
WBC-515DB	Large Size Cap-11mm Diameter, 15mm eyelet Jiffy Rivets-Double Cap
WBC-618DB	Jumbo Size Cap-13mm Diameter, 18mm eyelet Jiffy Rivets-Double Cap



STRAPS BUCKLES PADS & ACCESSORIES

RAPID RIVETS SINGLE HEAD

Made from solid brass with nickel plating, will not rust.

Code	Description
WBC-89X	RAPID RIVETS 3/8" POST HEIGHT, 7/16" CAP DIAMETER
WBC-91X	RAPID RIVETS 7/16" POST HEIGHT, 7/16" CAP DIAMETER
WBC-47X	RAPID RIVETS 9/16" POST HEIGHT, 7/16" CAP DIAMETER



COPPER BURRS

Code	Description
WBC-CB-7B	COPPER BURR #7
WBC-CB-8B	COPPER BURR #8
WBC-CB-9B	COPPER BURR #9
WBC-CB-10B	COPPER BURR #10
WBC-CB-12B	COPPER BURR #12
WBC-CB-14B	COPPER BURR #14
WBC-CB-8-7	COPPER BELT RIVET #8, 1.25"



STRAPS BUCKLES PADS & ACCESSORIES

COPPER BELT RIVETS

Code	Description
WBC-CB-7-6	COPPER BELT RIVET #7, 1"
WBC-CB-7-7	COPPER BELT RIVET #7, 1.25"
WBC-CB-7-8	COPPER BELT RIVET #7, 1.5"
WBC-CB-8-4	COPPER BELT RIVET #8, 3/4"
WBC-CB-8-5	COPPER BELT RIVET #8, 7/8"
WBC-CB-8-6	COPPER BELT RIVET #8, 1"
WBC-CB-8-7	COPPER BELT RIVET #8, 1.25"
WBC-CB-8-8	COPPER BELT RIVET #8, 1.5"
WBC-CB-9-4	COPPER BELT RIVET #9, 3/4"
WBC-CB-9-5	COPPER BELT RIVET #9, 7/8"
WBC-CB-9-6	COPPER BELT RIVET #9, 1"
WBC-CB-9-7	COPPER BELT RIVET #9, 1.25"
WBC-CB-9-8	COPPER BELT RIVET #9, 1.5"
WBC-CB-10-4	COPPER BELT RIVET #10, 3/4"
WBC-CB-10-5	COPPER BELT RIVET #10, 7/8"
WBC-CB-10-6	COPPER BELT RIVET #10, 1"
WBC-CB-10-7	COPPER BELT RIVET #10, 1.25"
WBC-CB-10-8	COPPER BELT RIVET #10, 1.5"
WBC-CB-12-4	COPPER BELT RIVET #12, 3/4"
WBC-CB-12-5	COPPER BELT RIVET #12, 7/8"
WBC-CB-12-6	COPPER BELT RIVET #12, 1"
WBC-CB-12-7	COPPER BELT RIVET #12, 1.25"
WBC-CB-12-8	COPPER BELT RIVET #12, 1.5"
WBC-CB-14-6	COPPER BELT RIVET #14, 1"



STRAPS BUCKLES PADS & ACCESSORIES

QUICK LOCK FASTENERS



Code	Description
WBC-OLF-2W	QUICK LOCK FASTENER SMALL RIVET STEM & HEAD, WHITE
WBC-OLF-4W	QUICK LOCK FASTENER STANDARD RIVET STEM & HEAD, WHITE
WBC-OLF-6W	QUICK LOCK FASTENER STANDARD LONG RIVET STEM & HEAD, WHITE
WBC-OLF-8W	QUICK LOCK FASTENER LARGE RIVET STEM & HEAD, WHITE
WBC-OLF-2L	QUICK LOCK FASTENER SMALL RIVET STEM & HEAD, BLACK
WBC-OLF-4L	QUICK LOCK FASTENER STANDARD RIVET STEM & HEAD, BLACK
WBC-OLF-6L	QUICK LOCK FASTENER STANDARD LONG RIVET STEM & HEAD, BLACK
WBC-OLF-8L	QUICK LOCK FASTENER LARGE RIVET STEM & HEAD, BLACK
WBC-OLF-IT-1	INSTALLATION TOOL

CHICAGO SCREW STAINLESS



Code	Description
WBC-CS-250CO	CHICAGO SCREW, STAINLESS STEEL, 1/4"
WBC-CS-380CO	CHICAGO SCREW, STAINLESS STEEL, 3/8"

SOLID BRASS, NICKEL PLATED



Code	Description
WBC-CS-250	CHICAGO SCREW, SOLID BRASS, NICKEL PLATED 1/4"
WBC-CS-380	CHICAGO SCREW, SOLID BRASS, NICKEL PLATED 3/8"

STRAPS BUCKLES PADS & ACCESSORIES

1/2' STAINLESS RIVETS



Code	Description
WBC-HSR-38FH	1/2" HARD STAINLESS RIVET-FLAT HEAD, 1/8 X 3/8"
WBC-HSR-05FH	1/2" HARD STAINLESS RIVET-FLAT HEAD, 1/8 X 1/2"
WBC-HSR-58FH	1/2" HARD STAINLESS RIVET-FLAT HEAD, 1/8 X 5/8"
WBC-HSR-34FH	1/2" HARD STAINLESS RIVET-FLAT HEAD, 1/8 X 3/4"
WBC-HSR-1FH	1/2" HARD STAINLESS RIVET-FLAT HEAD, 1/8 X 1"
WBC-HSR-38CH	1/2" HARD STAINLESS RIVET-COUNTER SUNK HEAD, 1/8 X 3/8"
WBC-HSR-05CH	1/2" HARD STAINLESS RIVET-COUNTER SUNK HEAD, 1/8 X 1/2"
WBC-HSR-58CH	1/2" HARD STAINLESS RIVET-COUNTER SUNK HEAD, 1/8 X 5/8"
WBC-HSR-34CH	1/2" HARD STAINLESS RIVET-COUNTER SUNK HEAD, 1/8 X 3/4"
WBC-HSR-1CH	1/2" HARD STAINLESS RIVET-COUNTER SUNK HEAD, 1/8 X 1"

SLOTTED PAN HEAD SCREW



Code	Description
WBC-3951	SLOTTED PAN HEAD SCREW, 8/32 X 1/4"
WBC-3953	SLOTTED PAN HEAD SCREW, 8-32 x 5/16"
WBC-3955	SLOTTED PAN HEAD SCREW, 8-32 x 7/16"



Massons Healthcare Materials Catalogue 2021

## FABRICATION & TOOLS

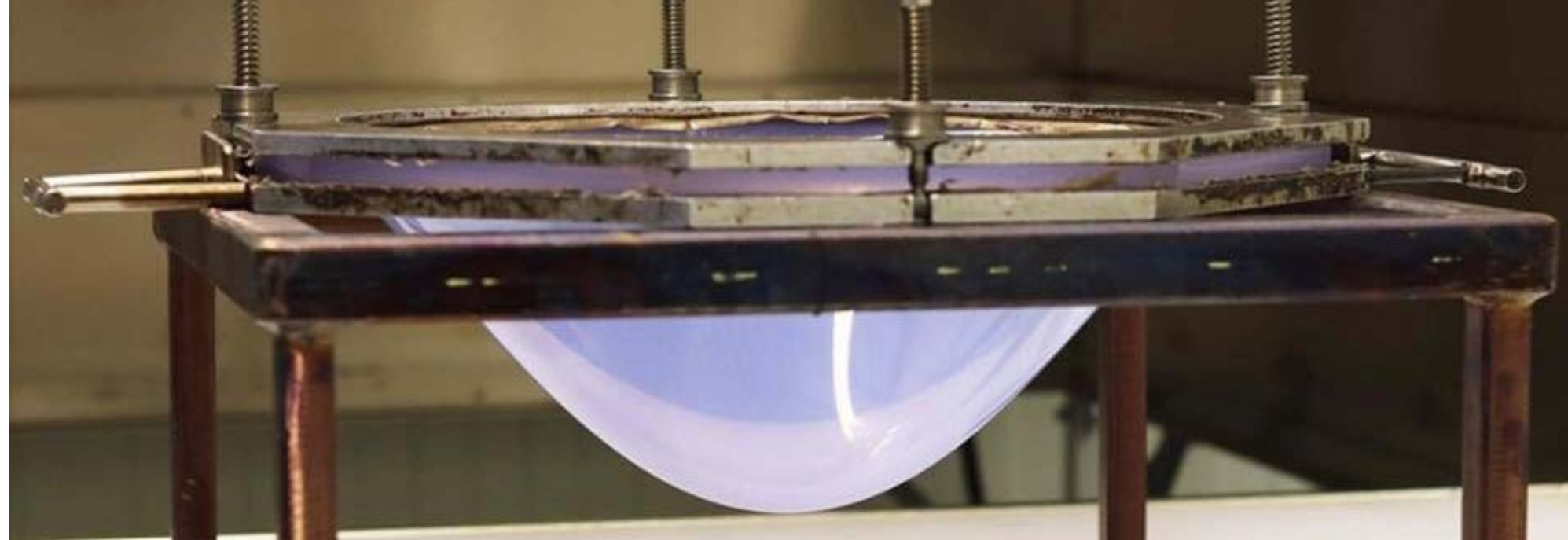
Using the correct tool for the job is paramount to ensure the production of a high-quality product.

We have expertise in the design, delivery and installation of complete workshops and complex CNC machinery.

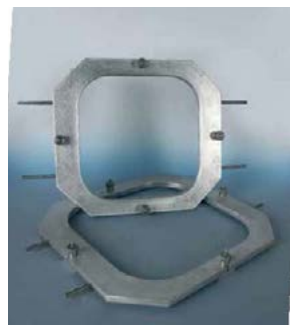
We are happy to help with any support or technical questions regarding our products.

**Call Us: +61(3) 9898 0011**  
**info@massonshealthcare.com.au**  
**Unit 15/111 Lewis Road, Knoxfield 3180 VIC Australia**  
**Mon-Fri: 9:00am to 5:00pm**

**\*\*More products available upon request - see pricelist for full range\*\***



## FABRICATION & TOOLS



### DRAPE FRAME

Specially developed for holding prosthetic thermoplastic squares.

Code	Description
LT-DRAPEF343	Drape Frame 343x343mm / 1x
LT-DRAPEF400	Drape Frame 400x400mm / 1x
LT-DRAPESCRW	Swing bolt retainer screws / 8x
LT-DRAPERET	Swing bolt retainer / 4x
LT-DRAPEBOLT	Swing bolt / 4x
LT-DRAPENUT	Nut / 4x
LT-DRAPERODL343	Support rods for 343mm frame / 4x
LT-DRAPEROD400	Support rods for 400mm frame / 4x



60.001.00X.00



### VACUUM FORMING FRAME 400 MM

Vacuum Forming Frame 400 mm Stainless steel frame for sheet size 400x400 mm. Robust clamp screws with a wide bearing surface securely hold the material in place. Different from the rather common round vacuum forming frames, this model is square. It is thus possible to use the thermoformable material to full capacity.

Code	Description
TF-60.001.005.00	Vacuum Forming Frame / 500x500mm

## FABRICATION & TOOLS



### VACUUM FORMING FRAME 500 MM

Vacuum Forming Frame 500 mm Stainless steel frame for sheet size 500x500 mm. Ideal for large-volume models. Robust clamp screws with a wide bearing surface securely hold the material in place. Different from the rather common round vacuum forming frames, this model is square. It is thus possible to use the thermoformable material to full capacity.

Code	Description
TF-60.001.005.00	Vacuum Forming Frame / 500x500mm



### MOUNTING SYSTEM FOR FRAMES, UNIVERSAL

Mounting system for vacuum forming frames, adjustable in width, i.e. system can be used for both available frame sizes.

Code	Description
TF-60.001.009.00	Frame Mounting System / 25cm high



### MOUNTING SYSTEM FOR FRAMES, HEIGHT ADJUSTABLE

Stainless steel mounting system for vacuum forming frames. Adjustable in width, three optional height settings. The system can thus be used for both frame sizes, and its height can be adjusted for all common oven types.

Code	Description
TF-60.001.009.01	Frame Mounting System / Adjustable 25/30/35cm height



## FABRICATION & TOOLS



### ABRASIVE SHEETS AND ROLLS

Code	Description
LT-ASB	Grit Cloth - Screenback / 280x230mm / 220 grit / 1 sheet
LT-ASB180	Grit Cloth - Screenback / 280x230mm / 180 grit / 1 sheet
LT-AWD/120	Wet and Dry paper / 280x230mm / 120 grit / 1 sheet
LT-AWD/240	Wet and Dry paper / 280x230mm / 240 grit / 1 sheet
LT-AWD/320	Wet and Dry paper / 280x230mm / 320 grit / 1 sheet
LT-AAOR/40	Aluminium Oxide Cloth / 7.5cmx20m / 40 grit / 1 roll
LT-AAOR/60	Aluminium Oxide Cloth / 7.5cmx20m / 60 grit / 1 roll
LT-AAOR/80	Aluminium Oxide Cloth / 7.5cmx20m / 80 grit / 1 roll



### FINISHING WHEELS 6MM PLAIN SHAFT

Interleaved wheels are ideal for roughing down plastic or polishing metal. Non woven are ideal for polishing plastic and foam materials.

Code	Description
LT-FWVF	Plain Shaft / 80x50x6mm / very fine / 1x
LT-FWF	Plain Shaft / 80x50x6mm / fine / 1x
LT-FWM	Plain Shaft / 80x50x6mm / medium / 1x
LT-FWFINT	Plain Shaft / 80x50x6mm / fine interleaved / 1x
LT-FWMINT	Plain Shaft / 80x50x6mm / medium interleaved / 1x
LT-FW50MS	Plain Shaft / 50x50x6mm / medium / 1x
LT-FWFINTS	Plain Shaft / 30x25x6mm / fine interleaved / 10x



## FABRICATION & TOOLS



### FINISHING WHEELS ON A 6MM THREADED SHAFT

Interleaved wheels are ideal for roughing down plastic or polishing metal and have strips of sanding cloth in-between the non woven leaves, non woven are ideal for polishing plastic and foam materials.

Code	Description
LT-FWNAT	Threaded Shaft / 80x50x6mm / non-abrasive / 1x
LT-FWVFT	Threaded Shaft / 80x50x6mm / very fine / 1x
LT-FWFT	Threaded Shaft / 80x50x6mm / fine / 1x
LT-FWMT	Threaded Shaft / 80x50x6mm / medium / 1x
LT-FWFINTT	Threaded Shaft / 80x50x6mm / fine interleaved / 1x
LT-FWFMINTT	Threaded Shaft / 80x50x6mm / medium interleaved / 1x
LT-FWADAPTM	16mm Adaptor / 1x
LT-FWADAPTW	5/8" Adaptor / 1x



### SANDING CAPS

Sanding caps, suitable for all common orthopedic tasks. Sanding caps are used on socket routers, they are installed using sanding cap mountings. Especially suitable for sanding radii. Long service life thanks to high product quality.

Code	Description
TF-74.105.001.04	70mm x 45mm D / 40 Grit / x6
TF-74.105.002.04	90mm x 65mm D / 40 Grit / x6
TF-74.105.001.08	70mm x 45mm D / 80 Grit / x6
TF-74.105.002.08	90mm x 65mm D / 80 Grit / x6

## FABRICATION & TOOLS



### SANDING SLEEVES, WIDE

With a width of 200 mm, these sanding sleeves can be used for material removal on larger surfaces.

Code	Description
TF-74.107.001.04	200mm x 72.5mm D / 40 Grit / x10
TF-74.107.001.10	200mm x 72.5mm D / 100 Grit / x10



### DRUM FOR SANDING SLEEVES, WIDE

Mounting drum for wide sanding sleeves. To install, the drum is slipped directly onto the shaft of the socket router.

Code	Description
LT-74.107.000.00	Drum for Sanding Sleeves / 200mm x 72.5mm D



### NYLON STOCKINETTE FOR VACUUM FORMING

Very thin nylon stockinette, with closed end. It is extremely elastic and ideally suited for being placed between the model and the thermoforming material during vacuum forming.

The nylon stockinette improves air suction between the model and the thermoforming material. It also makes demolding easier.

Code	Description
TF-80.137.110.00	Nylon stockintte for vacuum forming / 50cm / 10x

## FABRICATION & TOOLS



### TEFLON FILM

Heat resistant. Sold by the meter. The teflon film can be used to line the base of vacuum forming ovens in order to prevent heated materials from sticking to the oven.

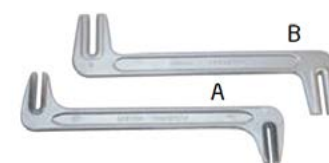
Code	Description
TF-70.289.000.00	Smooth / 100cm width / 0.13mm thick
TF-70.289.010.00	Perforated / 100cm width / 0.13mm thick



### WORKSHOP APRON

Robust workshop apron, with functional pockets for tools and small parts.

Code	Description
MH-APRON	Workshop (Massons) Apron / Pockets!



### BENDING IRON

About 250 mm long, chrome-vanadium steel.

Code	Description
TF-60.144.406.00	Square / 4mm x 6mm
TF-60.144.608.00	Square / 6mm x 8mm
TF-60.144.709.00	Square / 7mm x 9mm



# FABRICATION & TOOLS



## DEBURRING TOOL FOR PLASTICS

With mobile deburring blade which makes it possible to also deburr round shapes with ease.

Code	Description
TF-60.278.000.00	Deburring Plastics



## MEASURING TAPE

Measuring range: 1.5 m.

Code	Description
MH-TAPE	Measuring Tape / 1.5m



## FOLDING RULE

Measuring range: 1 m.  
Foldable, folded length: 13 cm.

Code	Description
TF-90.302.000.10	Folding Rule / 1m / Folds to 13cm

# FABRICATION & TOOLS



## CAST SAW AND CAST SAW BLADES

For cutting wood, plaster, carbon and plastics etc.

N.B. Cast Saw sold without blades.

Code	Description
LT-FCS/BS	Multimaster Cast Saw / 1x
LT-FCSB/HR80	Fein half-round cast saw blade / 80mm ø
LT-FCSB/R80	Fein round cast saw blade / 80mm ø
LT-FCSB/S	Fein straight cast saw blade / 30mm



Call Us: +61(3) 9898 0011  
info@massonshealthcare.com.au  
Unit 15/111 Lewis Road, Knoxfield 3180 VIC Australia  
Mon-Fri: 9:00am to 5:00pm

---