

Retrofit Recessed Light Engine



Overview

A retrofit LED Light source solution designed to replace traditional lamps in recessed industrial luminaires. The Light engine is designed using high efficiency Philips Luxeon T emitters driven by a high efficiency Inventronis driver. The modular design allows easy replacement of modules. The robust carefully design series complies with LM-80, LM-79, UL, TUV and SAA standards. Ideal for Hygiene, Clean Room and Retrofits.



Product Information

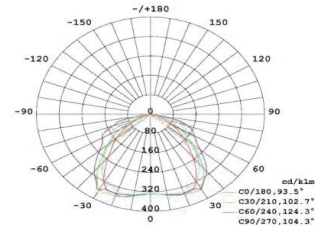
Product Code	Luminaire Power	Operating Power	Lumens	Light Distribution	Dimensions	Weight
EST-120WiRF-5K	120W	100V-240V	13200	90° *100°	240x255x55mm	6,5Kg
EST-G2120WiRF-5K	120W	100V-240V	20400	90° *100°	240x255x55mm	6,5Kg
EST-200WiRF-5K	200W	100V-240V	22000	90° *100°	400x255x55mm	8,5Kg

Technical Specification

Luminaire

Light Source	Philips Luxeon
Material	Anodized Aluminium
Coating	Anti-Static Coating
IP Rating	IP65
Colour Temperature	5000K
CRI / Power Factor	>70Ra / >0.9
Operating Temperature	-40°C- 50°C

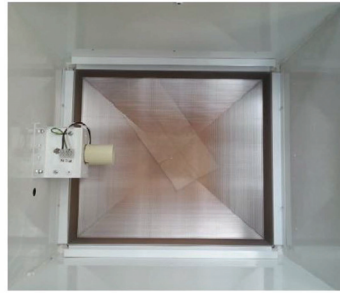
ISO-Illuminance Curve



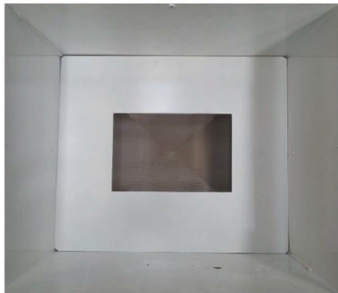
Retrofit System



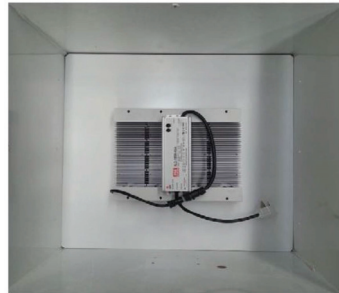
Step 1.
Remove cover and internal metal reflector.



Step 2.
Remove lamp and lamp holder.



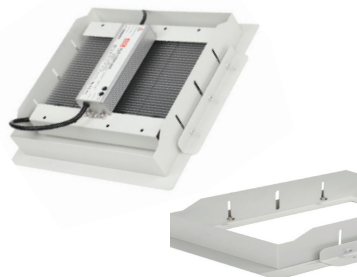
Step 3.
Insert retrofit base plate.



Step 4.
Insert LED light engine into base plate and terminate to mains voltage.

Optional (Indent)

Retrofit Recessed Light Engine Option
EST-120WRL-5K Dimensions: 400x351x99.3mm
EST-200WRL-5K Dimensions: 400x509x99.3mm



e.stello
Engineered LED Lighting Solutions



Please note the technical information and product images are subject to change due to product upgrades and feature changes.