

Touch Screen Products



AIS Touch Screen solutions deliver exceptional performance meeting the needs of a broad range of industries, be it the regulated requirements of medical applications, the durability counted on for industrial controls, or the rugged outdoor environment of oil fields,

AIS PCAP Touch Screen products are specifically designed for applications that push traditional capabilities. We leverage decades of experience to configure standard sized PCAP Touch Screens that deliver a balanced feature set for products requiring high-performance solutions.

AIS standard Touch Screens can be configured to meet your unique requirements including cover glass size and customer-specific artwork/decoration.

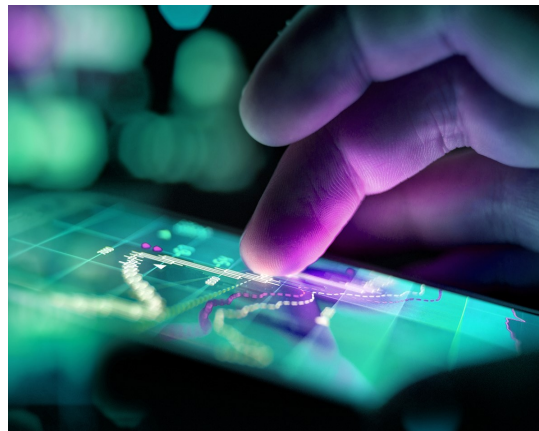


Product Description

AIS Touch Screen glass sensor construction provides the impact strength and optical clarity needed for high-performance products. Touch characterization is optimized using our best-in-class tuning processes to align functionality to the user's application. AIS Touch Screens seamlessly integrate into your product design to support overall product performance goals.

AIS Touch Screens offer :

- **Multi-Touch, up to 10 points with Palm Rejection**
- **Impact and Scratch Resistance**
- **Water Rejection**
- **Touch Tuning and Characterization**
- **Optical Clarity**
- **High Noise and EMC Immunity**



AIS offers fully integrated design and manufacturing capabilities worldwide and can provide custom touch screen/display solutions upon request. Please contact AIS to learn more about how our expertise and experience can help solve your most difficult Human Machine eXperience (HMX) challenges.

Applications

- Medical Displays
- Factory Automation
- Industrial Controls
- Outdoor Kiosks
- Food Service
- Ruggedized Applications
- Harsh Environments

Features & Benefits

- Standard sizes include 7.0", 10.1" and 12.1W"
- Integrated PCAP sensor and controller board
- Touch tuning to meet your application needs
- Chemically strengthened glass that is durable and scratch resistant
- Anti-glare coatings
- Water rejection for false touch performance
- Noise and EMC Immunity
- USB and I²C data output

SPECIFICATIONS

STANDARD SIZES		7.0"	10.1"	12.1W"
Part Number		TS070S-01	TS101S-01	TS121W-01
Dimensions (mm)		187.48x118.12	250.70x172.55	301.12x164.2
CAPACITIVE (PCAP) TOUCH				
Features		<25ms Response Time <50mA Power Draw of Sensor 10 point Multi-Touch and Gesture support Water Rejection Finger & Gloved Touch compatible		
I/O Interfaces		USB with HID Digitizer Class Output or I ² C		
Input Voltages		3.3 or 5.0 VDC		
Cover Glass				
Material		1.8mm Soda Lime Glass		
Anti-Glare		70 +/- 10 Gloss Anti-Glare Etch		
Transmissivity		>88% with Haze <5%		
Decoration		Black Border		
ENVIRONMENTAL				
Operating Temperature		0°C to +50°C		
Standard Storage Temperature		-40°C to +70°C		
Relative Humidity		0-95% @ +40°C (Non-condensing)		
EMISSIONS & IMMUNITY				
ESD, EMI, RFI		NOTE: AIS can help define and configure your compliance strategy to support your product regulatory needs		



Americas

AIS Headquarters
Engineering and Manufacturing
 600 W. Wilbur Avenue
 Coeur d'Alene, ID
 83815 USA
 800-444-5923
sales@advancedinput.com

Manufacturing
 530 N. Franklin St.
 Frankenmuth, MI
 48734 USA

Asia

Engineering and Manufacturing
 No. 237, 10F-1
 Da-Tong Road Section 1
 Xi-Zhi District
 New Taipei City, 22161
 Taiwan

Manufacturing
 A5 Lot, Block A1
 Yan Chuan Village
 Song Gang Town Bao'an District
 Shenzhen, Guangdong 518105 China