

Organo Newsletter



FOREWORD

“Organo was started to re-establish a conscientious connection with the way we produce and consume resources as a community. Our goal is to create replicable community development models built on triple bottom line success and net zero thinking.”

BRINGING IT ALL TOGETHER

The Dream

It all started with observing the necessity, requirements, issues affecting our own personal modern lives and then fully visualizing what can be done about it.



A Collective Vision

We then brought together subject-matter experts to open up all the dimensions and possibilities of the project. These led us to freely research and explore the new ideas that we were closely watching.



Design & Concept

Net-zero, Sustainable on seven areas that create a natural cycle, Minimal design, Farm centric, etc. All these concepts were generated through the process of our research into exploring our ideas.



Construction & Development

From charts to raw materials, we have quickly transformed our ideas into executable plans and begun constructing and developing, while also testing various ideas that may work towards the same goals.



Right People at the Right Place

Bringing the right people to join the community is very important. It is important for members to share a common understanding of the principles practiced so they can be an active part of growth of the community.



Enabling self-growth

Once everything is in place, we then set up processes, measures to enable and ensure a natural growth and sustenance of the entire community's environment and its surroundings.



NAGESH BATTULA

Founder, Managing Director



VIJAYA DURGA ADIGOPULA

Co-Founder, Director

PURPOSE

Our soul purpose is to
Co-create Eco-habitats that
Celebrate Living.

Organo builds full-featured
sustainable living environments
harmlessly integrated into the
natural world, supportive of a
healthy way of living.

When we say Eco-Habitat, we
mean an integrated eco-system as
a living space, consciously created
with sustainability principles at
its center, designed for having
the minimal impact without
contaminating the environment in
it or around it.

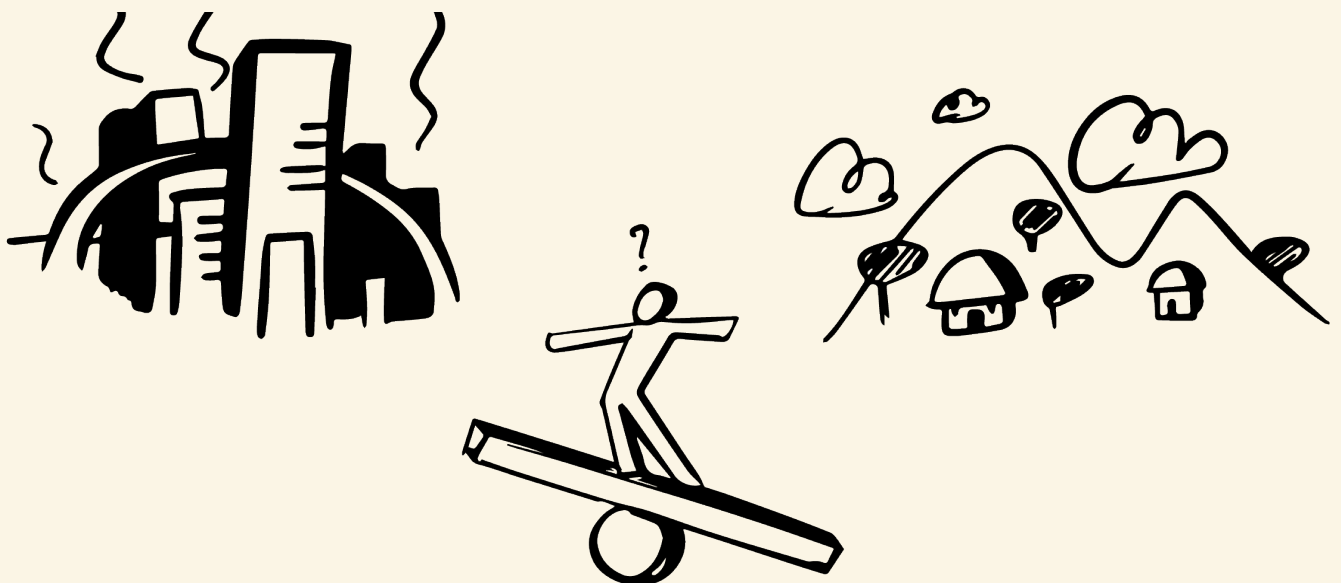
“ At Organo, Urban
refinement meets Rural
ethnicity.”

We create eco-habitats at the
intersection of rural and urban
experiences, offering a way
to live a life integrated with
nature, to help build sustainable
communities that care.

Why counter urbanization?

The advent of rapid urbanization has led us to live in between polluted environments, genetically modified produce and other downsides of densely populated areas, leading to an excessively stressful life.

We often find ourselves in this modern balancing act between living this way and finding ways to escape, relax and re-connect with nature.



To counter the effects of urbanization, we needed to explore reverse-migration, going back to the roots from where it all started.

We needed to find new ways of living in balance with the ecosystem and all the various parts of it, with access to healthy organic food and fresh air to breath, allowing sustainable growth of a community without affecting the environment which they live in.



“Guests are most welcome at Naandi, any time of the year. We feel happy to invite guests to stay overnight or spend a few days with us because we're comfortable in the fact that we have extra suites to put them up in. At Naandi, there is ample space for all our guests at our homes and those who spill over, at the roomy comfortable Suite Rooms. **”**

ORGANO NAANDI - A WAY OF LIFE FOR THE PASSIONATE AND CONSCIOUS

Naandi is the manifestation of our efforts towards creating a Rurban Eco-habitat on net-zero and triple bottom line principles. Situated 17km from Hyderabad, we offer sustainable living space, a conscious community and opportunities to work with nature and experience a combination of urban refinement and rural ethnicity.

TOTAL AREA

This is a community of 73 families built on 36.5 acres of land.

AFFORESTED LAND

A total of 10 acres of afforestation area covered with perennial trees which form a thick cover regulating local temperature and forming local ecosystems.

AGRICULTURAL LAND

A total of 6.5 acres of agricultural farm land used to grow 17 different types of vegetables, 5 different types of leafy vegetables and 7 different types of fruits.

FARM UNITS

A total of 73 families coming together with the intention to live without being a burden on the environment.



THE SPACE

The 33 Acres of land located outskirts of the city of Hyderabad, has home units and other necessary structures built around an organic farm. Along with all the amenities expected of a modern villa community, 2/3rd of its space is used for collective farming - where residents join farmers to farm produce. 1/3rd of the space is designated for personal farming, where residents can farm independently in their backyard. the Community Our intent is to promote a soul of collective living where our members actively participate in events, socialize in designated places and a well designed exploratory path, share their time, knowledge and expertise for active social enhancement and the cultural progress of the community. Naandians live together and work collectively for the sustenance of their home. Naandi Home We have Incorporated the latest in high-performance building science and home technology. Every home skillfully combines the outdoor and indoor space to create an experience of being integrated with the environment around it.

With open halls, large windows, sliding doors facing the farm, terrace, patios and deep balconies, whether its where you live or visit to get away, Naandi's the perfect place to relax, let go and take a dip in nature.



THE EXPERIENCE

Our goal was to capturing the essence of rural living and combining it with the ways of the modern lifestyle. Every comfort you could expect in an urban arrangement is offered to you within a breath-taking atmosphere, healthy organic food and an engaging community conducive to growth, relaxation and an overall improvement of health.

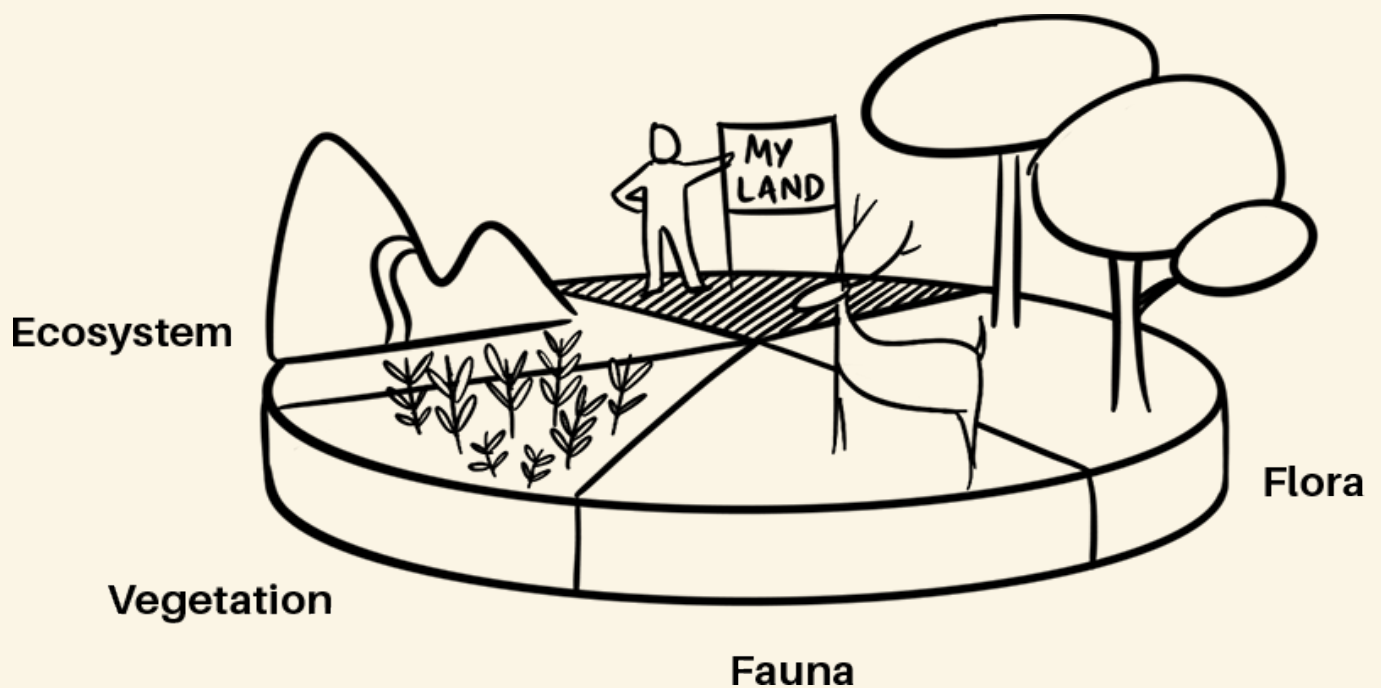
“ Quiet, peaceful, pollution-free and it allows us to relax and calm down in a quiet place, away from the noise and disturbance of city living. We love to spend our weekends away relaxing at Naandi with the kids. We enjoy a good night's sleep.”

-Shwetha Reddy Naandian



SAMAVRIDHI - FAIR SHARE OF PROSPERITY FOR ALL

Given the perils that are fast engulfing the so called 'Fast Life' in metros, Rurban way of life makes perfect sense. Taking into consideration this fact, we set out on a mission to bring back the advantages of rural culture and blend them with modern comforts. This is how we took tangible steps to convert our vision into a real time community...



“The best friend of eco-habitats is responsibility. We, at Naandi, have chosen Rurban living consciously and passionately. Everything we do has a meaning and a purpose. For us, all the spaces that make Naandi, the epitome of sustainability, are sacred and serve a specific need.”

AGRICULTURE AT THE CENTER

Health is one of the primary concerns of the modern urban individual, with produce shipping with high levels of toxins. Having recognized this, we build our communities with Organic Agriculture at its center. Eco-system first, inhabit later.



FLORA AND FAUNA NECESSARY TO CREATE THE SUSTAINABLE CYCLE

Building an eco-system requires us to have all the pieces necessary to create a consistent repeatable cycle. We had to expand our vision entirely towards learning and understanding what it takes to create a sustainable environments and create natural cycles of growth.



SELF GROWING COMMUNITIES THAT TAKE CARE OF THEMSELVES

Eco-habitats depend on its habitants for its conservation and sustainability. All our community members come together to create an environment of natural growth and sustenance. We offer you a way to be independently sustainable by yourself as well as join in with the rest of the community on collective efforts.



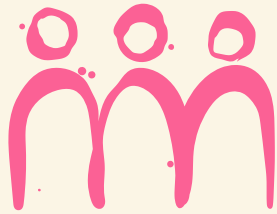
MERGING URBAN AND RURAL EXPERIENCES

For many, the sight of a rural setting brings about feelings of uninterrupted harmony. We wanted to capture that, while still offering you the opportunity for a comfortable lifestyle with all possible amenities expected from a modern living community.



SAPTHAPATHA - SEVEN STRANDS OF SUSTAINABLE LIVING

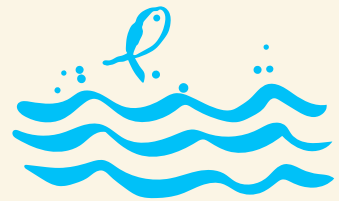
To pursue sustainability, we have created processes within seven layers or strands which independently and interdependently work together. Food, Water, Air, Earth, Energy, Shelter and People are the central areas that help us think towards a sustainable future.



People



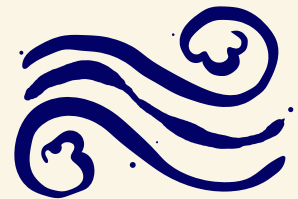
Food



Water



Shelter



Air



Energy



Earth

THE ORGANO PRINCIPLE

FOOD

Creating healthy source of nutrition through food / produce grown using organic farming practices without the need for chemicals.

WATER

Employ advanced scientific procedures of conservation and treatment of water and regularly monitor overall consumption vs production.

AIR

An endless supply of fresh Air wherever you are - We deliver geo-cooled fresh air into homes through our Earth Air Tunnel System.

EARTH

Protect the Earth by preserving soil health by using organic methods and fertilizers, employ necessary waste management and recycling processes.

ENERGY

Produce all Energy from within the community area through renewable sources like solar energy and a bio-gas plant and employ procedures to reduce power consumption.

SHELTER

Create Shelter within nature while maintaining bio-diversity. Open yet personal living spaces and wide communal spaces incorporating comforts of this day and age.

PEOPLE

Encourage a community of People who live together responsibly, share their time, knowledge and expertise towards co-creating and sustaining the environment around them.

“ Using vedic farming, Organo Naandi grows 35 varieties of vegetables, 15 varieties of fruits and 95 varieties of medicinal plants at Naandi. We use animal husbandry, rainwater harvesting and control surrounding use of chemicals, employ many other ways to maintain a sustainable cycle for farm-fresh produce. ”

- Lakshmi Battula, Farm Supervisor Organo

SAPTHA PATHA - AIR

Pose & Intent

Air pollution has a relatively straight-forward relationship between cause and effect. But the solutions to solve this problem requires lifestyle changes, implementation of scale, and coordinated effort from all stakeholders. Quality of air affects many facets of life - health & well-being, ecology and materials.

Air quality is one of the most important factors determining health but it is also the most ignored. At Organo Naandi, the goal was to create an environment where

good air quality is maintained within homes as well as outside.

Airborne particulate matter such as dust and toxins are not only harmful but also difficult to control. Fortunately, there is a natural way of treating this air to improve air quality; the trees.

The land on which Organo Naandi was built was a barren land with perennial trees dotting the landscape. Since the project's inception, the landscape has grown thicker and thicker. The farm also

adds that extra layer of protection due to the fact that the surface is mulched and wet which suppresses dirt & pollen from getting airborne. A dense tree cover not only helps reduce airborne dust but also reduces heat island effect by regulating humidity and decreasing areas where heat is trapped.

The farm also brings with it some problems such as pollen from weeds like Parthenium. Regular weeding is done to make sure this weed is not grown out of proportion so pollen in the air is controlled.



Since afforestation and natural farming at Organo Naandi helped in controlling air pollution to an extent, maintaining indoor air quality and temperature with adequate cross-ventilation and the **Earth-Air Tunnel System (EAT)** appeared as constructive solutions.



What is EAT?

Earth-Air Tunnel Draft System is a mechanism of heat exchange where the ground acts as a heat sink to increase or decrease the air temperature.



To supply fresh air into the homes, Earth-Air Tunnel Draft System is installed at Naandi. Although the ground temperature varies based on season, location and soil type, it typically follows the gradient. The temperature difference between the ground and ambient air increases as depth increases. Taking advantage of this phenomenon, the ground can be used as a heat sink.

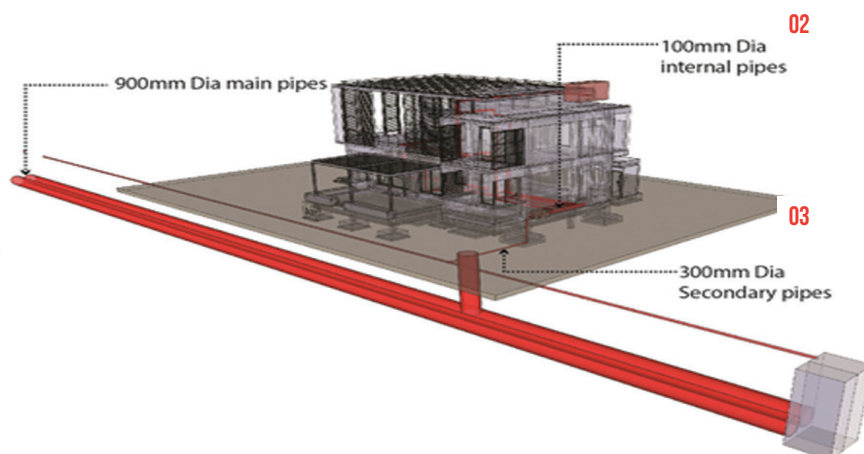
Ambient air can be cooled naturally by

sending it into the ground through a network of pipes buried 10 feet under. The ground – and therefore the pipes – being cooler, the ambient air is naturally cooled down. This air is sent into homes.

EAT System at work @ Naandi

The main components of the Tunnel Draft system are air intake chambers, underground piping network, intake connections from pipes into homes and air handling unit.

“Breathing good quality air is a fundamental requirement to a healthy living. An eco-habitat is incomplete without ensuring every breath is pure. The most notorious factor degrading air quality is our inability to take action on problems that we all know exist”



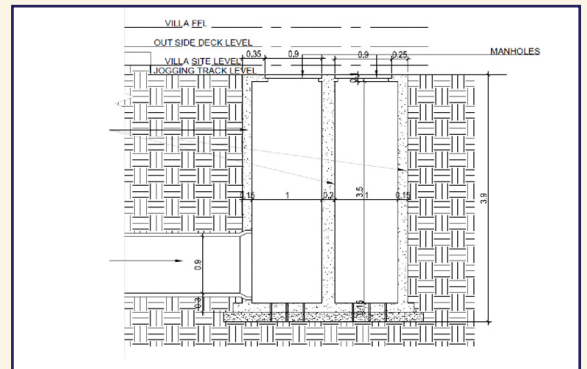
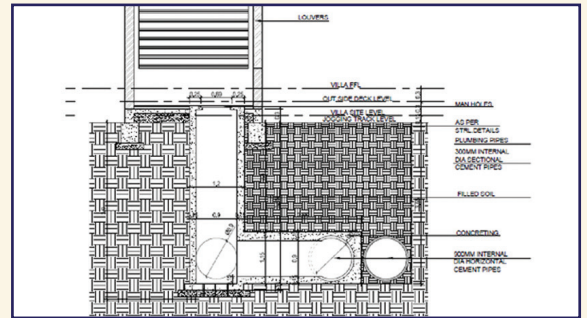
Design vs Reality

How is it being measured?

The effect of earth-air tunnel systems was measured during the months of April & May 2019 by taking temperature and airflow readings at every register inside the homes and comparing this to the ambient air temperature outside.

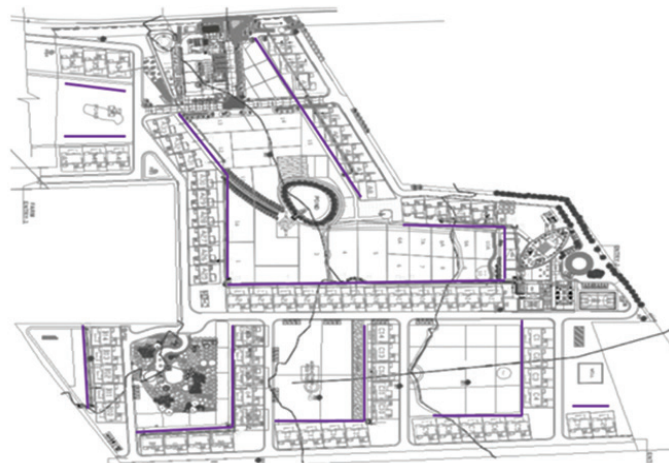
What are the test results?

The results indicate that the temperature difference that we set out during design is achieved. The temperature difference that we expected was 6 degrees. The testing results show that we are achieving more than this.



EAT Distribution Network

The tunnel draft network has 9 sections serving different farm units.



Best Practices

Tunnel Draft works best in peak summer and peak winter conditions. The airflow due to tunnel draft works on the principle of hot air rising and cold air taking its place. This means that residents must allow the hot air inside to escape. To achieve this,

1. Switch on the tunnel draft when natural ventilation through windows is not possible
2. When switched on, close all doors and windows on all floors
3. In the first floor, partially open a window to allow hot air to escape
4. Even if that is not enough, put on air conditioners and continue to run the tunnel draft, which gives fresh air and improves AC efficiency

Test Results

Outside Temperature (c)	Average Tunnel Draft Temperature (c)	Temperature Difference (c)
38	28.3	9.7
36.7	30	6.7
39	32	7
38.2	30.8	7.4
35	28.6	6.4
38	30	8
36	27.1	8.9
36	26.7	9.3
37	32.7	4.3
36	28	8
38	27.8	10.2
38	29.5	8.5
37	30	7
36	27.2	8.8
36	26.5	9.5
34	28	6
37	30	7
36	30	6
35.3	28.8	6.5
35.5	30	5.5

* Information based on tests conducted during summer in 2019.

BIRDS AT ORGANO NAANDI

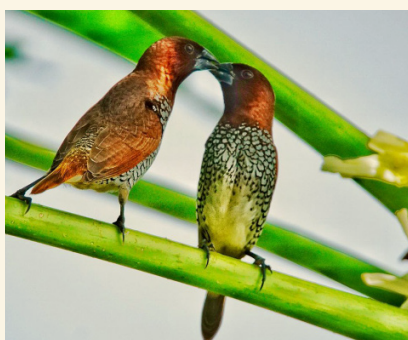
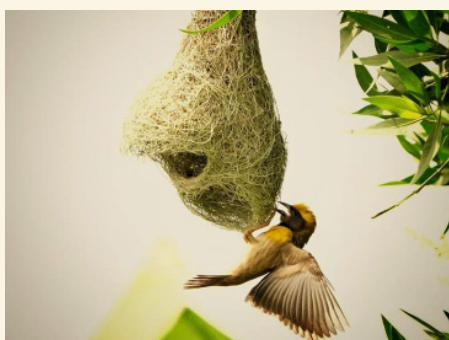
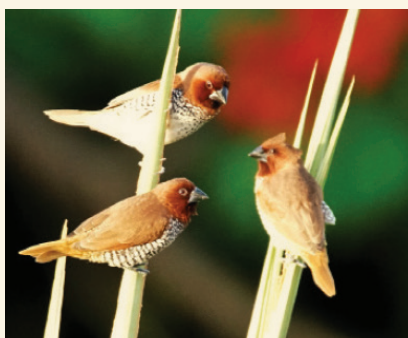
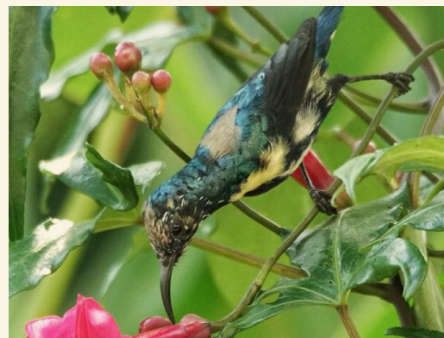
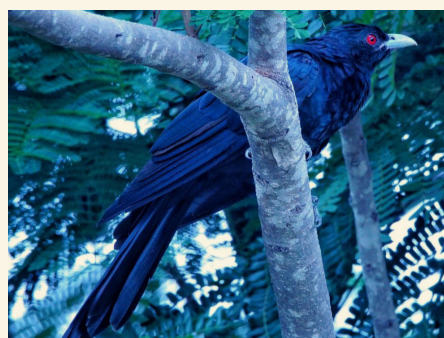
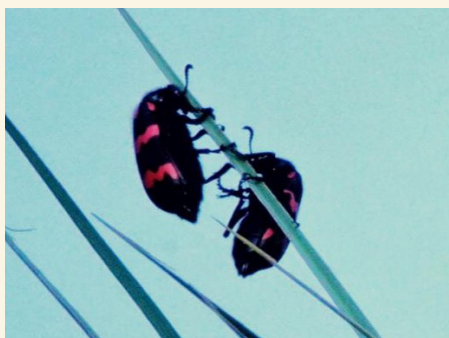


PHOTO CREDIT:
MADHU REDDY



CONTACT US



ORGANO NAANDI

Contact: +91-810-675-6010, +91 7993355227

Email: pavan.parimi@organo.co.in

Website: [www.http://organo.co.in](http://organo.co.in),
www.facebook.com/Organo

AZIZ NAGAR

Location: #148 & 149,

Aziz Nagar Panchayat,

Through Yenkapalli Village, Moinabad, RR District,
Hyderabad – 500075.

Co-creating eco-habitats that celebrate THE living