

open door



THE OFFICIAL NEWSLETTER OF WEST BLETCHLEY COUNCIL

OCTOBER 2023

MERRY CHRISTMAS

Christmas Lights Switch On

Friday 1st December
Carols from 5:30 to 6:30PM
Light Switch On 6PM

Christmas Magic at Melrose

Saturday 2nd December
11am to 3pm

Music, Stalls, Food & Refreshments
Arts, Crafts and Activities for Children
A Visit from Santa!

Interested in having a stall at the event?
Email events@westbletchleycouncil.gov.uk
01908 370 348

For MK3 residents
Free to attend
Frank Moran Centre
MK3 6PA



www.westbletchleycouncil.gov.uk

INSIDE THE OCTOBER EDITION

- Chair's Welcome
- Introduction by the Parish Clerk
- August Competition Winners
- Review of the West Bletchley Neighbourhood Plan
- Bletchley Town Deal
- Landscaping - Volunteering and Tree Planting
- Climate Change - A Focus on Chepstow Park
- Consultation: Bletchley's Brunel Centre
- The Food Bank - Collection & Drop off Point
- Britain in Bloom
- What's on at The Marc and Frank Moran Centre
- Summer in West Bletchley
- February Half-Term Activities
- Remembrance Parade 2023
- Carnival's Charity: Girlguiding, Bletchley Division
- Bletchley Park: 85 years since the Arrival of the Codebreakers
- Acorn Community Bank
- Wordsearch
- Climate Competition
- AI Summit at Bletchley Park

NOTICEBOARD

Committee Meeting Dates

Office Opening Hours

MP's Surgery

Milton Keynes Councillors

West Bletchley Councillors

CHAIR'S WELCOME

Welcome to the Winter edition of the Council's newsletter, Open Door.



Our summer activities proved popular again with the Carnival, Sunday bands, cinema in the park, play schemes and much more. I was delighted to present a cheque for over £3,000 raised at our carnival to Girlguiding, Bletchley Division and I am sure this money will be put to good use in these challenging times. Don't forget you can nominate a Milton Keynes charity to benefit from next year's Carnival.

I shall be holding my annual Chair's Networking lunch in November where we celebrate and thank the many folk in West Bletchley who give their time and energy to various voluntary endeavours. One such group to be congratulated are those who look after the Church Green Sensory Gardens. They have been recognised by the RHS in the It's Your Neighbourhood Award and have been deemed "Outstanding".

West Bletchley Council will as always be laying a wreath on Remembrance Sunday at the War Memorial near St Mary's Church in Church Green Road. You are of course welcome to join this remembrance at the War Memorial.

I hope to see you at our Christmas celebrations - we will be turning on the Christmas tree lights on Friday 1st December and we will have our usual Christmas Magic at Melrose on Saturday 2nd December.

With best wishes

Cllr Veronica Belcher
Chair of West Bletchley Council

INTRODUCTION BY THE PARISH CLERK

I am delighted to introduce this year's winter edition of Open Door.



This edition includes reports on activities and events that we were able to provide during the summer months. We very much hope that those of you who were able to join us enjoyed both our regular and new events.

The 2023 Remembrance Parade and Wreath Laying Ceremony will take place on Sunday 12th November. Details of this year's event are featured at page 15. Organisations wishing to participate in this year's parade are required to pre-register. Contact us at West Bletchley Council offices for a parade registration form.

You will see (at page 4) that West Bletchley Council has agreed to review and extend the Neighbourhood Plan. Please get in touch and let us know if there are any aspects of the current plan that you think need reviewing as well as any new points that you would like us to consider adding.

In the run up to Christmas we will, again, be accepting food donations both at our offices at 221 Whaddon Way and the MARC, Melrose Avenue Resource Centre. See page 8 for details of the items that the Food Bank is keen to receive.

Have a great Christmas and a Happy New Year.

Helen Hupton
Clerk to West Bletchley Council

AUGUST COMPETITION WINNERS

The winners of the August Wordsearch were Mrs P Johnson and Eddie Hart who both win a £15 gift card.

Deadline date for Open Door 2024

If you would like to place an article in the Open Door newsletter, the March deadline date for 2024 is as follows:-

Tuesday 13th February
(distribution on Thursday 14th March)

NB:- The Open Door newsletter is published on a quarterly basis to provide information to residents about the Council, its services and amenities or other local service providers, and community groups. Any advertisements for commercial businesses will not be considered.

Letters should be sent to Open Door at

WEST BLETCHLEY COUNCIL
221 WHADDON WAY, BLETCHLEY
MILTON KEYNES, MK3 7DZ

Or email to clerk@westbletchleycouncil.gov.uk



Our newsletters are printed by www.csfprint.com on paper made from responsibly sourced wood fibre that earns the FSC label.

Please recycle, once you've finished reading.



REVIEW OF THE WEST BLETCHLEY NEIGHBOURHOOD PLAN

West Bletchley Council has agreed to review and re-adopt the West Bletchley Neighbourhood Plan.

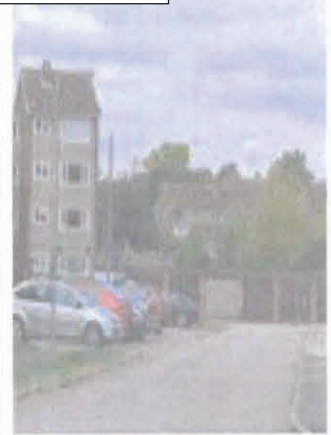
The current plan adopted in 2019 covers the period 2016 to 2026. The Plan includes a series of policies and proposals to protect and enhance the character of and provision of homes, jobs and other services in the parish. It does this through a number of land-use policies which address specific sites and set out general planning principles and criteria to guide new development in the parish.

The West Bletchley Neighbourhood Plan is considered to have played a significant role in helping to shape and guide development within the parish and a review of the Plan, to cover the period 2026 onwards, has been agreed as a priority action for the Council.

In agreeing to proceed with a review of the Plan the Council has confirmed that this will be undertaken on a similar basis to the preparation of the current Plan with a Neighbourhood Planning Steering/Review Committee appointed to report to the Council via its Environment Committee.

Terms of Reference for the Neighbourhood Plan Review Steering Committee will be considered by West Bletchley Council at its October Full Council meeting.

Check the Council's website at www.westbletchleycouncil.gov.uk for further updates.



BLETCHLEY TOWN DEAL



**Funded by
UK Government**



POWERED BY
**LEVELLING
UP**

Town Deal Programme – September 2023

Milton Keynes City Council are continuing to make great progress in the delivery of their £22.7 million Town Deal regeneration programme, funded via the Government's Towns Fund. The funding is designed to capitalise on the emerging opportunities presented by the development of the Oxford to Cambridge East-West rail link, which connects to the Bletchley railway station.

The funding will deliver 9 regeneration projects across Bletchley & Fenny Stratford, focusing on addressing three key themes of: Regeneration, planning and land-use; Connectivity; and Skills and Enterprise.

Two of the schemes are now nearing practical completion. The first is the Transformation at Bletchley Park project, which through the Towns Fund and other funding secured by the Bletchley Park Trust, has helped in the regeneration and use of a significant wartime building (Block E). The second project, Tech Park at MK College, has helped provide new hardware and equipment for the newly constructed MK College Institute of Technology building. Both these projects will help to support the growth of skills for the Town and upskilling of residents and students going forward.

The Redway project, which will provide new or improved Redway links between the Lakes Estate, Newton Leys and Blue Lagoon Nature Reserve to Bletchley Town centre, is now making great progress following mitigation to protect wildlife. The project is divided into 4 sections, with section 4 being delivered via the Towns Fund and sections 1 to 3 being delivered via several different funding streams. All sections are expected to be complete by Spring 2024.

Whilst some projects are nearing completion, the remaining are still in the development phase as MKCC and the Town Deal Board work on the emerging schemes. Progress is being made, including technical survey work and consultation will take place on several schemes in 2024. Details on any events will be provided to local residents and we look forward to sharing these projects with you.

If you have any questions on the Town Deal programme, then please contact the team by emailing: info@groundbreakingbletchleyandfenny.co.uk

LANDSCAPING - VOLUNTEERING AND TREE PLANTING

Come and Join Us!

We have arranged several landscape volunteering opportunities around the parish with The Conservation Volunteers during the winter months and would really like you to join us.



Ever thought about volunteering? Do you like working outdoors? Would you like to make a difference to the surrounding area? Want to meet other like-minded individuals who live nearby? Then we have the perfect solution.



Any maintenance work is best carried out during the winter months as the woodland vegetation becomes dormant. We have arranged three sessions that will be led by TCV, where we will be helping to keep our delightful areas of woodland in good shape; It's your opportunity to get involved with path clearing, coppicing and creating valuable wildlife habitat.

Save these dates!

Monday 13 November – Barleyhurst Wood
Monday 11 December – Wood at Church Green Road and Downing Close
Monday 15 January – Wood off Colossus Way

Everybody is welcome and you can attend as many of the sessions as you like. No previous experience is needed and tools can be supplied. The sessions start at 10:00am and run until 3:00pm but you can stay as little or as long as you like. Please bring your own snacks, drinks and gloves and be aware that no toilet facilities will be available.

If you are interested, please contact **Katherine Miskin** (TCV Senior Project Officer) to register your details via email k.miskin@tcv.org.uk or call her on 07740 899634.

Tree Planting across the parish

West Bletchley Council are committed to improving biodiversity across the parish and will be continuing our programme of tree planting during the winter season.

We will be planting across nine of our parks and green open spaces. Watch out for clusters of mainly fruiting trees in areas to include Church Green Park, Sherwood Drive Park, Highland Close and Huntingdon Crescent.



CLIMATE CHANGE - A FOCUS ON CHEPSTOW PARK

In our third, and final, feature on local parks we take the opportunity to shine a spotlight on Chepstow Park, our flagship park in the parish.



Chepstow Park can be found in the south-western part of the parish, running parallel to the railway line. It provides the greatest biodiversity benefit of all the parks in the parish with a rich variety of habitats and has been awarded Green Flag status – one of only a small number of parks to receive the award in Milton Keynes.

What's at Chepstow Park that may be of interest to you?

- **Wildlife** – Wildlife can be seen in abundance at Chepstow Park, primarily due to the **differing types of habitat** found in the area. The allotments (one of four allotment sites across the parish), historic hedgrow and the pond all provide very different habitat for wildlife. Technically, the pond is a **Sustainable Drainage System (SuDS)** which naturally manages drainage in the area by slowing and holding back the water that runs off the site, prior to releasing it into the natural water course nearby. Several different water birds including Coots, Mallards and Moorhens can be seen here along with amphibians (frogs, toads, newts etc) and a range of insects. Why not try using the **Seek App** to help you identify the wildlife that you encounter – plants, fungi, reptiles, birds

and insects can be identified together with other species too and the app is available for free on Android or iOS.



- **Trees** – There are many **different species of trees** within the park. You will find Horse chestnut encompassing the large open field, whilst Willow are dominant around the pond area. Ash, Alder, Field Maple, Fir and Cherry are also present in the park, to name but a few. Can you identify the species of trees around you? Why not enter the **climate competition** which looks at trees, their leaves and seeds/fruits.

- **Leisure opportunities** – Walking is a prime pastime when in the park. Did you know that a **circular walk** opportunity has been created with the installation of a new footpath? If you like to be more active, **football goals** can be found on the open field, together with a **basketball hoop**. Whilst for the younger members of the community there are 3 different **play areas**, with equipment suitable for children aged 2-12 years. Why not explore the new equipment that has recently been installed at the Wetherby Gardens play area?

How many of the following can you see in the park?

- SuDS
- Horse Chestnut
- Creeping Thistle
- Mallard
- Bulrush
- Ivy
- Red Clover
- Moorhen
- Green Flag Award (flag)
- Bird Box

/10

CONSULTATION: BLETCHLEY'S BRUNEL CENTRE

Have your say and help decide the future of Bletchley's Brunel Centre and the former Sainsbury's site.

Milton Keynes City Council has prepared a Draft Development Brief for the Brunel Centre, Bletchley, which will inform the future use and design for the site. The site includes the Brunel Centre, the former Sainsbury's store, Wilko and Stanier Square. Milton Keynes City Council's independent property arm, Milton Keynes Development Partnership (MKDP) and Milton Keynes City Council, purchased the site earlier this year to form part of the Bletchley and Fenny Stratford Town Deal project.

The Draft Development Brief document sets out design principles for the site's redevelopment and potential uses that would help regenerate the town centre.

The city council would like local people to take this opportunity to share their thoughts on the proposed brief.

Details of the consultation and a copy of the draft brief can be found at: [Current Urban Design consultations | Milton Keynes City Council \(milton-keynes.gov.uk\)](#)

This consultation runs for six weeks, beginning **Thursday 12 October 2023**. If you have any comments on the Draft Development Brief these must be received by **5pm on Thursday 23 November 2023**.

Any feedback should be sent to: urban.design@milton-keynes.gov.uk or in writing to the Urban Design Team, Milton Keynes City Council, Civic, 1 Saxon Gate East, Milton Keynes MK9 3EJ.



FOOD COLLECTION POINT!

Drop off your donation to the West Bletchley Council offices at 221 Whaddon Way and at The MARC, Frank Moran Centre, Melrose Avenue

The FOOD BANK Shopping List

Please choose an item from this list to buy and donate to The FOOD BANK

Tinned Meat
Tinned Fish
Tinned Pulses
Tinned Fruit
Tinned Tomatoes
Long Life Milk
Juice or Squash

Spreads – Jams, Peanut Butter
Tea
Tinned Pasta
Tinned Vegetables
Pasta Sauce
Dried Rice – 500g or 1kg packets
Rice Pudding / Custard

Cereal
Biscuits
Soup
Toilet Roll

Thank you for your support!



Sensory Gardens Community Group receive recognition from The Royal Horticultural Society

RHS Judges visited the Sensory Gardens at The Church Green adjacent to St. Mary's Church, following the volunteer group's nomination for the "It's Your Neighbourhood Award, 2023".



Our group of hardworking, local volunteers have been awarded the highest level of recognition in this category – Level 5, Outstanding, something that the whole group are very proud of. Notable achievements include the new Bug House, the displays linked to the King's Coronation and the recycling of materials from around the parish. "The standard of maintenance and care is very high meaning that the local community can readily access and enjoy the gardens," commented the judges.



IT'S YOUR
NEIGHBOURHOOD



RHS
Inspiring everyone to grow

The Royal Horticultural Society
and Thames & Chilterns in Bloom are proud to present

Sensory Gardens Community Group

With a 2023 It's Your Neighbourhood Award of

Level 5 - Outstanding

Keith Weed CBE
President, Royal Horticultural Society

The RHS, Royal Horticultural Society, Britain in Bloom and It's Your Neighbourhood are trademarks registered under names of the Royal Horticultural Society.

THE MARC AND FRANK MORAN CENTRE

NEW ACTIVITIES AT THE CENTRE

Arts & Crafts and Chepstow Wildlife Day

Kicking off the summer celebration, there was an end of term disco that got everyone grooving. We had a sweet treat to mark the start of summer – delicious ice cream for all! We also kept the popular arts and crafts sessions going to keep the creative vibes flowing, from chef hats, to astronauts, and fishbowls!

West Bletchley residents were treated to an extraordinary event that brought the wonders of wildlife right to their doorstep! Chepstow Wildlife Day, a brand-new addition to the community's summer calendar, offered an exciting and educational experience for all ages.

One of the highlights was the birds of prey workshop and displays, showcasing their impressive skills and providing a unique opportunity to learn about these fascinating birds and their importance in our ecosystem.

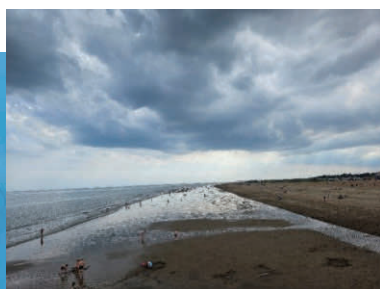


Cookery Classes for Young People

Calling all young food enthusiasts! MK Cookery School joined us to offer some fantastic cookery classes for young people aged between 8 and 16. We dished up three mouthwatering workshops where they learned to make chicken fajitas, pizza, and fairy cakes. Yum! Something for everyone!

Skegness Coach Trip

Wrapping up the summer with a day trip to the seaside, 165 people made their way to Skegness. A seaside town, famous for its long, sandy beach and seafront attractions. Residents spent time on the beach, parks and seal sanctuary, rides, plus food and drink venues.



Let's Get Physical, Coffee Morning and Lunch Club

Looking to add a little more movement to your day? We have just the thing for you! Join our exclusive ladies-only 'Let's Get Physical' class. No matter your fitness level, you can participate at your own pace. This group not only provides a great workout but also guarantees plenty of laughter and camaraderie!

Our coffee morning and lunch club for those over 55 is gaining popularity! If you're interested in making new friends, enjoying a hot drink, and indulging in delicious toast or a delightful two-course meal on Fridays, head over to our "What's On" page for more details. Join us throughout the week and experience the joy of community and connection!

WHAT'S ON AT THE MARC AND FRANK MORAN CENTRE

Friendly staff are on hand for information and support throughout the week. They can signpost to other organisations for further support if required.

Food Bank vouchers can be collected during opening hours,
as well as dog waste bags and battery recycling bags.

PCs with internet access and a public use shredder is also available.

You are always welcome for tea or coffee, to meet friends or make new ones!

The current timetable is as follows:

MONDAY:

07:30-08:30 Breakfast Club (Term time)

Breakfast for school children

10:00-12:30 Frank's Over 55 Drop In

Enjoy tea, toast and the quiz

13:00-16:00 The MARC Crafters

Relax with like-minded people and
make new friends

16:00-17:00 After School Club (Term time)

Help with homework, board games, PC
access, etc

WEDNESDAY:

07:30-08:30 Breakfast Club (Term time)

Breakfast for school children

10:00-12:00 Lord Grey Academy Coffee Morning (Term time)

Come along and meet other parents from the
school

16:00-17:00 After School Club (Term time)

Help with homework, board games, PC access, etc

DAILY:

Tea & Coffee
Computer and Internet Access
Food Bank
Information & Support
Fare Share
Form Filling
Bus Pass Applications
Dog Waste Bags
Community Bookshelf

TUESDAY:

10:00-12:00 MK Job Club

Update your CV, search for jobs and find
training opportunities

12:30-13:30 Let's Get Physical

Suitable for ladies of all ages (18+)

Exercises can be adjusted to different
abilities

10:00-16:00 MK Money Life Line Financial advice

THURSDAY:

10:00-12:30 Frank's Over 55 Drop In Enjoy tea, toast, Bingo and the Raffle

FRIDAY:

07:30-08:30 Breakfast Club (Term time)

Breakfast for school children

11:00-15:00 Lunch Club

Come along and enjoy a two course meal, have
fun playing Bingo and Raffle

Cost £5.50

(for 55 years+ MK3 West Bletchley Residents)

16:00-17:00 After School Club (Term time)

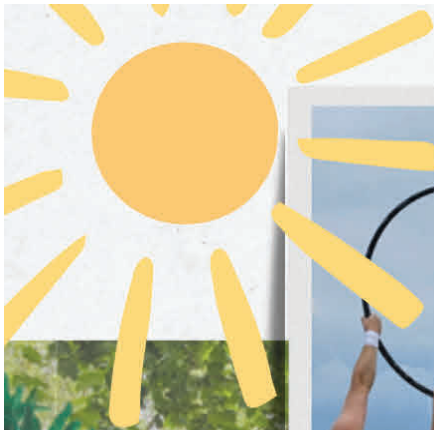
Help with homework, board games, PC access, etc

The MARC and Frank Moran Centre is open for all MK3 West Bletchley Residents to
access, Monday to Friday between 09:00-16:00



For more information call 01908 370 348
or email michael.mcgann@westbletchleycouncil.gov.uk
or marta.barczak@westbletchleycouncil.gov.uk





Sing, Top Gun: Maverick and Black Panther: Wakanda Forever were shown at the Outdoor Cinema!



Over 2,000 people attended the 10-week summer concerts!



Summer in West Bletchley

There have been many exciting events this summer for West Bletchley residents to enjoy! From Carnival to Bands and Outdoor Cinema...



SUMMER IN WEST BLETCHLEY



Kids learnt how to make chicken fajitas, pizza and cupcakes!

Birds of prey display, bird feeders and bug hunting at Chepstow Local Park

... to Wildlife days, seaside trips, cookery workshops, outdoor play schemes and get fit classes! Something for everyone to enjoy!

#westblechleyevents
#proudtobemk3



February Half-term Activities

Frank Moran Centre

Valentine's Disco
Friday 16th Feb
5-7pm

Arts and Crafts
19th & 21st Feb
1-3pm

Free and for MK3 residents

Suitable for ages 4-14yrs

Melrose Ave, MK3 6PA

All activities are free, no booking required

Children under 10 must be accompanied by a responsible adult

Follow facebook.com/frankmoranmarc for more updates!

01908 370348



REMEMBRANCE PARADE 2023

12th NOVEMBER
FROM 10:30 - 11:30

In partnership with The Royal British Legion, WBC, St Marys Church and Bletchley Park



West Bletchley's act of remembrance returns on Sunday 12th November.

We are proud to be planning the **West Bletchley Parade** again this year, supported by many community groups and Veterans as well as dignitaries such as the High Sheriff of Buckinghamshire and the Mayor of Milton Keynes.

You, your friends and families are invited to join us in remembering those who have died for our freedom and those who continue to suffer from their injuries due to war.

PARADE DETAILS

From Bletchley Park to the war memorial off Church Green Road.

9.30 – 10am

Organisations to report to Wilton Avenue entrance to Bletchley Park.

NB: Access will only be permitted to organisations that have registered to take part in the parade.

10.15 Parade Master begins the lining up of parade

10.30 Parade begin march to war memorial

11.00 Silence, bell-ringing and wreath laying ceremony at war memorial

11.30 St Mary's Church Open for Refreshments and Information on War Graves

No available parking at Wilton Hall or the DVLA for public members. For groups, parking permits will be distributed to allow parking and drop off at Bletchley Park. Road closure on Church Green Road.

Please note: Parade participants will not be permitted re-entry back into Bletchley Park after the parade.

Thank you for being a part of the West Bletchley Remembrance Day Parade, the Royal British Legion invites you to their Clubhouse on Melrose Avenue for refreshments and St Mary's Church, off Church Green will be open directly after the service for tea and cakes.

Register your Organisation, please email: events@westbletchleycouncil.gov.uk or collect a Registration Form from the WB Council Offices, MK3 7DZ, during open hours (9.30am -4pm).



CARNIVAL'S CHARITY: GIRLGUIDING, BLETCHLEY DIVISION

The West Bletchley carnival successfully raised an incredible £3,325, all of which was donated to this deserving local charity. This significant contribution will directly impact the lives of girls in the Bletchley area, enabling Girlguiding, Bletchley Division to further their mission of providing a safe and inclusive environment for young members, and contribute positively to the Bletchley community.



Empowering Girls:

For over 50 years, Girlguiding, Bletchley Division has been a pillar of support, offering a wide range of activities and opportunities for nearly 300 girls in the West Bletchley area. With the dedication of over 80 volunteers, this organisation has created a nurturing space where girls can learn, grow, and have fun. Since the 1920s, Girlguiding has played an integral role in the Bletchley community, empowering girls to develop practical and social skills while engaging in exciting adventures.

The current economic situation has presented numerous challenges for families, making it crucial for organisations like Girlguiding, Bletchley Division to provide affordable and inclusive membership and activities. Thanks to the donation from the Carnival, this goal can be achieved more effectively.



Carnival 2024

You can nominate your favourite Milton Keynes charity or community group to become the recipient of West Bletchley Council's Carnival Charity, 2024!
Email: events@westbletchleycouncil.gov.uk

BLETCHLEY PARK: 85 YEARS SINCE THE ARRIVAL OF THE CODEBREAKERS

Did you know that 2023 marks 85 years since Bletchley Park became the 'war station' of the Government Code and Cypher School (GC&CS)?

In September 1938, tensions with Germany were high, so GC&CS and personnel from SIS (MI6) evacuated to Bletchley Park for 22 days in order to ensure that they were ready if war were to break out. The site had been chosen as it was relatively secluded, safe from major towns and cities that could be the target of air raids, plus, more importantly, close to telecommunication networks linked to London and military and intelligence sites elsewhere in the UK. The 1938 visit has gone down in folklore as 'Captain Ridley's Shooting Party' but this wasn't the official cover story. Locals were told Bletchley Park was being used for work related to the air defence of London. Inquisitive local papers asked questions, but the story was hushed up.



Members of GC&CS outside the Bletchley Park Mansion, September 1938.
Courtesy Judith Hodsdon.



Bletchley Park Mansion today, with visitors enjoying a great day out.
Credit Bletchley Park Trust.

Very few wartime photos exist, but this is a rare photo of the 1938 visit, showing Codebreakers outside the Mansion. As you can see in the more recent photo, the Mansion is still relatively unchanged, though the site changed rapidly over the next seven years, as huts and blocks built up. At the start of World War Two, in September 1939, around 150 people worked for GC&CS. By January 1945, almost 9,000 women and men were here, with thousands more at associated sites in the UK and overseas.

Today you can discover more about the beginning of the GC&CS story at Bletchley Park in the *Early Days* exhibition in the Mansion, and learn about the huge scale of the site in the *The Intelligence Factory* exhibition in Block A. You can also search the online Roll of Honour for the names of those who worked working for GC&CS.

Local residents who live within a ten-mile radius of Bletchley Park enjoy 50% off admission, and tickets act as an Annual Pass, giving unlimited free returns within a year. Under 12s go free and we offer family tickets for two and single parent families.

Things happening at Bletchley Park this autumn:

Block E, once the communications hub of wartime Bletchley Park, has been refurbished and repurposed to create two new resources: The Block E Learning Centre, which includes eight learning spaces able to accommodate learners from primary school pupils to students in higher education, and The Fellowship Auditorium, a state-of-the-art presentation and event space. Look out for public events and family workshops in these new spaces over the coming months.

1 & 2 November – AI Safety Summit. Bletchley Park will be the host venue for the UK government led AI Safety Summit, where world leaders and industry experts will gather for crucial talks on the safe development and use of frontier AI technology. To be able to host this event of global importance, Bletchley Park will be closed for one week, from Saturday 28 October to Friday 3 November. Local residents who will be affected by the AI Safety Summit taking place at Bletchley Park in early November will be contacted directly by Thames Valley Police with further information. Milton Keynes City Council will be working closely with Thames Valley Police on the details of the impact of the event for Bletchley and the wider MK area.

Christmas fun this December – join us for festive fun with family trails, puzzles, seasonal food and drink, and a visit to Father Christmas who will be taking up residence in the beautifully decorated Ballroom in the Mansion.

Head to [Bletchleypark.org.uk](https://bletchleypark.org.uk) for the latest information to help plan your visit.



WHO AND WHAT ARE WE?

Acorn Community Bank is a “not-for-profit” financial cooperative, owned and run by its members. We offer savings and loans at affordable rates, to help our members save and manage their money ethically and responsibly. We can offer a safe place for you to save as all savings are protected by the Government Financial Services Compensation Scheme. Our loans are available at competitive rates and are often well below to those offered by high street and internet based consumer loan companies. **All those who live or work in Milton Keynes can join***. There is a £2 joining fee and just £1 minimum savings.

Joining is easy - you can do it online at www.acorncommunitybank.co.uk You can then complete the membership form online. Once you are a member you can download our smart phone app, manage your account online, check your balance, withdraw savings and apply for a loan. You can save any amount** regularly by standing order or by bank transfer.

We are also in partnership with an organisation called ENGAGE, offering pre-paid debit cards. These can be used for spending or ATM withdrawals just like any other Visa card, but cannot become overdrawn and thus incur high interest charges.

For more information about joining and all our services go to our website. You can get also get advice or any information weekdays by telephoning: 03030 300147 (national rates apply) or by sending an e-mail to office@acorncb.co.uk

CURRENT LOAN PRODUCTS

Our loans are available to those who save with us. Join US for free online now at:

www.acorncommunitybank.co.uk

All loans are subject to status and lending criteria; loans are usually repaid over 12 months but can be up to 60 months. Terms and conditions apply.

Family Loans from £200 to £1,000: Parents can initially apply for a loan of up to £500, with the limit rising to £1,000 after two years. Your Child Benefit payments are paid into your Credit Union account and are used to repay the loan and for an agreed regular savings. The remainder can be saved or withdrawn. Interest rates are 2.75% to 3.0% per month (38.5%, 42.6% APR).

Personal Loans from £500 to £5,000: For new and existing members, who have not previously saved with us. Interest rates are 1.9% to 3.0% per month (25.3%, 42.6% APR).

Loyalty Savers Loans from £500 to £15,000: For members who have built up savings with us, and who wish to use their savings as security for a larger loan. Interest rates from 0.5% to 2.0% per month (6.1% , 26.8% APR).

Payroll Loans from £500 to £7,500: If you work for an employer who has a partnership agreement with us, then you can save and borrow via deductions from your salary. Interest rates for loans are from 0.5% to 2.0% per month (6.1%, 26.8% APR).

Please be aware that all our loans require either existing savings or an agreed amount of regular savings which cannot then be withdrawn until the loan has been repaid. Credit Reference checks may be required.

Footnotes

* We also cover Wiltshire, Oxfordshire, Berkshire and Buckinghamshire.

** Up to £60,000.

Acorn Community Bank is the trading name for Wiltshire and Swindon Credit Union Limited, authorised and regulated by the Financial Conduct Authority and the Prudential Regulation Authority FRN 213793

WORDSEARCH TO WIN A £15 GIFT CARD

B L I Z Z A R D O Z C Y
 S J A N U A R Y S D H P
 L F F R T W I N T E R O
 E S R A C F T H O C I L
 I C O L D T R F R E S A
 G C Z G R S I S M M T R
 H D E L T L H C Y B M T
 I S N O W F L A K E A N
 N T O V B Y Q R T R S F
 G B R E R B S F R L F T
 F T L S O C K S N T R T
 R R U S N O W M A N H O

Arctic	Coat	Gloves	Polar	Snowman
Blizzard	Cold	Hat	Scarf	Socks
Boots	December	Ice	Sleighbing	Stormy
Christmas	Frozen	January	Snowflake	Winter

To enter this competition just complete the wordsearch, fill in the entry form then cut it out and send it to us at West Bletchley Council, 221 Whaddon Way, Bletchley, Milton Keynes, MK3 7DZ. All correct enteries will be put into a hat and winners drawn out. The closing date for enteries is **Friday 8th December 2023**. (The winners names will be published in the next edition).

Name

Address.....

.....

..... Postcode

Telephone.....

CLIMATE COMPETITION - TREES IN THE PARISH

We are lucky to have some fine tree specimens within the parish, not only do they help to fight climate change but they save wildlife and improve our health too.

As Autumn approaches and the leaves begin to fall, so too do their seeds and fruit. Can you recognise some common pairings of leaves and fruit/seed for trees that can be seen around the parish? Give your answers below. The winning entry will receive a £15 Garden Centre Voucher.

Leaf (Insert number)	Tree	Fruit/Seed (Insert letter)
	Oak	
	Alder	
	Horse Chestnut	
	Sycamore	



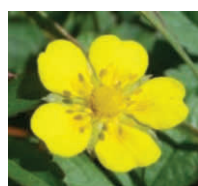
Name.....
 Address.....

 Post Code
 Telephone

The competition is open to all residents of West Bletchley. Simply fill in the entry form alongside and send it to West Bletchley Council, 221 Whaddon Way, Bletchley, Milton Keynes, MK3 7DZ. All correct entries will be entered into the draw, with the winner being selected at random. The **closing date** for entries is **Friday 8th December 2023**. Our winner will be revealed in our next edition.

August Competition Results – Can you identify these wildflowers?

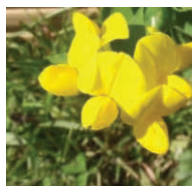
In the last edition of Open Door we asked if you could identify a variety of wild flowers that could be seen in and around our parks. The correct answers are shown below.



Creeping Cinquefoil



Common Ragwort



Bird's-foot Trefoil



Lesser Celandine



Meadow Buttercup



Cowslip

The following winners correctly identified each of the wildflowers and receive a GROW WILD seed kit from Royal Botanic Gardens, Kew; Michelle Williams, Christina Leopold, Sally Whitney, Steve Smith, Julie Webb, Judith Thomas, Julie Prosser, Muhammad Siddiqui, Rose Ward and Thiruk Kumaran.

AI SUMMIT AT BLETCHLEY PARK

You will likely be aware that on 1-2 November, the Government will be hosting the first international summit on the safety of Artificial Intelligence at the iconic venue of Bletchley Park. A location already renowned for its role at the frontier of technology.

As part of the senior policing team in Milton Keynes, it was an honour to hear that this globally significant event would take place in Bletchley but I was also concerned at how this could impact those of us living and working in the area.

We have been working closely with partners including Milton Keynes City Council, the Government departments organising the AI Summit as well as the officers overseeing the police operation surrounding it to ensure that the impact our activity will have locally is kept to a minimum.

You will notice a lot more police officers in the area ahead of and during the event. They are there to answer your questions as well as to police the AI Summit so please do speak to them with any queries or concerns that you have or of course, if you spot anything that doesn't seem right.

Whilst the police operation surrounding events at Bletchley Park will be significant, day to day policing continues unaffected and protecting our communities remains paramount. Additional officers will also be supporting those on emergency response across Milton Keynes. When the public need the police, we will respond as we would any other day.

The global significance of the event and the attendees expected mean that Thames Valley Police are putting in more security measures than you would expect to see in Milton Keynes but these are typical for large events that we have policed in locations like Windsor.

There will be security fencing put in place around Bletchley Park and barriers preventing vehicle access to certain roads will be temporarily installed.

As such, it is important for you to note that there will be some road closures in place in the areas surrounding Bletchley Park on 1 and 2 November:

- Sherwood Avenue between Turing Gate and Bletchley train station
- Jemima Way
- Welchman Court
- Tiltman Lane
- Wilton Avenue
- The redway between Sherwood Drive and Wilton Avenue will also be closed during this time

**Superintendent Emma Baillie,
Commander for Milton Keynes police area**

NOTICEBOARD

WEST BLETCHLEY COMMUNITY CENTRE

CHARITY SHOP



Open Monday to Wednesday 9-12

Clothing, books, bric-n-brac and much more!!

Donations gladly welcome (no electricals or furniture please)

FUTURE MEETINGS

West Bletchley Council is a very busy organisation. It holds committee meetings and all councillors meet together bi-monthly.

All meetings of the council are open to the public. We welcome residents coming along and try and involve residents where legally able and practically possible to do so.

Committee meetings are held at
221 Whaddon Way, Bletchley.

Meetings usually start at 7:30pm except for the Environment Committee which starts at 7pm.

COMMITTEE MEETING DATES FROM OCTOBER 2023

Monday 6th November - Environment

Monday 20th November - Community

Monday 4th December - Finance & General Purposes

Monday 18th December - Full Council

Monday 15th January - Environment

Monday 29th January - Community

Monday 12th February - Finance & General Purposes

Monday 26th February - Full Council

Monday 11th March - Environment


WEST BLETCHLEY COUNCIL STATEMENT

West Bletchley Council's acceptance of any advertisement with the Open Door newsletter shall under no circumstances be considered an endorsement of the products and/or services advertised.

West Bletchley Council



SCOOP THAT POOP



Did you know we have 76 dog bins across West Bletchley
All MK3 Parish residents can pick up free dog poo bags from
the West Bletchley Council office on Whaddon Way or
The Frank Moran Centre on Melrose Avenue



Scan the QR code to locate your nearest dog bin
Or go to www.westbletchleycouncil.gov.uk

If your dog poops, you must scoop!

NOTICEBOARD

OPENING HOURS

West Bletchley Council Office opening hours:

Monday to Friday 9.30am to 4 pm

E-mail: Clerk@westbletchleycouncil.gov.uk

Main Office | The Clerk | 221 Whaddon Way
Bletchley | Milton Keynes | MK3 7DZ

Telephone: 01908 648257

www.westbletchleycouncil.gov.uk

MP'S SURGERY



Iain Stewart MP would like to hear from you. He holds regular surgeries by appointment in

Bletchley, Stony Stratford,
Woburn Sands, Netherfield
& Milton Keynes Council Civic Offices.

Please call his office on 01908 686830
to book a surgery appointment.

You can also send him an email at
iain.stewart.mp@parliament.uk

or write to him at
Suite 102 | Milton Keynes Business Centre
Foxhunter Drive
Linford Wood | MK14 6GD

MILTON KEYNES COUNCILLORS

- BLETCHLEY WEST WARD -



CLLRS MICK LEGG & LAUREN TOWNSEND

Councillors' Resident Advice Surgery Every Tuesday Evening 6-7pm

The Frank Moran Centre | Melrose Avenue
Bletchley | MK3 6PA

COUNCILLOR MICK LEGG

07920 103239

mick.legg@milton-keynes.gov.uk

COUNCILLOR LAUREN TOWNSEND

07599 886744

lauren.townsend@milton-keynes.gov.uk

COUNCILLOR ADAM ROLFE

adam.rolfe@milton-keynes.gov.uk

- BLETCHLEY PARK WARD -



COUNCILLOR NIGEL LONG

Councillors' Resident Advice Surgery Every Thursday Evening 6-7pm

West Bletchley Community Centre
3 Porchester Close | Bletchley | MK3 6BH

COUNCILLOR NIGEL LONG

nigel.long@milton-keynes.gov.uk

COUNCILLOR WAQAS AHMAD

waqas.ahmad@milton-keynes.gov.uk



COUNCILLOR MO IMRAN

mo.imran@milton-keynes.gov.uk

WEST BLETCHLEY COUNCILLORS

If you need help you can contact any one of the councillors listed below or you can contact the West Bletchley Council Office

CASTLES



MATTHEW BURN
Cllr.matthew.burn@westbletchleycouncil.gov.uk
COMMUNITY



SUE LONG
Cllr.susan.long@westbletchleycouncil.gov.uk
01908 376141
COMMUNITY



GLADSTONE MCKENZIE
Cllr.gladstone.mckenzie@westbletchleycouncil.gov.uk

FAIRWAYS WARD



SHERY DELFANI
Cllr.shery.delfani@westbletchleycouncil.gov.uk
COMMUNITY, ENVIRONMENT,
FINANCE & GENERAL PURPOSES,
SALDEN CHASE



DEREK HIRCOCK
Cllr.derek.hircock@westbletchleycouncil.gov.uk
ENVIRONMENT



IAIN LAYDEN
Cllr.ian.layden@westbletchleycouncil.gov.uk
COMMUNITY, ENVIRONMENT,
SALDEN CHASE

ABBEYS



GERALDINE HELDER
Cllr.geraldine.helder@westbletchleycouncil.gov.uk
ENVIRONMENT



KIT POWER
Cllr.kit.power@westbletchleycouncil.gov.uk



CHRISTIAN DURUGO
Cllr.christian.durugo@westbletchleycouncil.gov.uk
COMMUNITY, FINANCE
& GENERAL PURPOSES



ZARAK DORSETT-MORGAN
Cllr.zarak.dorsett-morgan@westbletchleycouncil.gov.uk
COMMUNITY, FINANCE &
GENERAL PURPOSES



PAUL MOORE
Cllr.paul.moore@westbletchleycouncil.gov.uk
COMMUNITY

POETS



VACANT

SCOTS



BARBARA MOORE
07872 624412
Cllr.barbara.moore@westbletchleycouncil.gov.uk
VICE-CHAIR OF COUNCIL



FELICITY COCKBAINE
Cllr.felicity.cockbaine@westbletchleycouncil.gov.uk
COMMUNITY, FINANCE &
GENERAL PURPOSES



KEN ROWE
Cllr.ken.rowe@westbletchleycouncil.gov.uk
COMMUNITY,
ENVIRONMENT

CHURCH GREEN



WAQAS AHMAD
Cllr.waqas.ahmad@westbletchleycouncil.gov.uk
ENVIRONMENT



JIM KEARON
Cllr.jim.kearon@westbletchleycouncil.gov.uk
ENVIRONMENT,
FINANCE &
GENERAL PURPOSES



NABEEL NAZIR
Cllr.nabeel.nazir@westbletchleycouncil.gov.uk
FINANCE &
GENERAL PURPOSES

COUNTIES



PAUL HARVEY
Cllr.paul.harvey@westbletchleycouncil.gov.uk
ENVIRONMENT



GEORGE BARRATT
cllr.george.barratt@westbletchleycouncil.gov.uk



NIGEL LONG
01908 376141
Cllr.nigel.long@westbletchleycouncil.gov.uk
FINANCE & GENERAL PURPOSES,
SALDEN CHASE

RACECOURSES



JAMES BUTSON
Cllr.james.butson@westbletchleycouncil.gov.uk
ENVIRONMENT



ELAINE WALES
Cllr.elaine.wales@westbletchleycouncil.gov.uk
ENVIRONMENT,
SALDEN CHASE

RIVERS



VERONICA BELCHER
01908 371802
Cllr.veronica.belcher@westbletchleycouncil.gov.uk
CHAIR OF COUNCIL



RAY BRADY
Cllr.ray.brady@westbletchleycouncil.gov.uk
COMMUNITY,
FINANCE &
GENERAL PURPOSES



NAOMI SINCLAIR
Cllr.naomi.sinclair@westbletchleycouncil.gov.uk
COMMUNITY



ANDY COATON
Cllr.andy.coaton@westbletchleycouncil.gov.uk
COMMUNITY,
SALDEN CHASE



SALLY CROCKETT
Cllr.sally.crockett@westbletchleycouncil.gov.uk
ENVIRONMENT

SAINTS