

# open door



THE OFFICIAL NEWSLETTER OF WEST BLETCHLEY COUNCIL

JULY 2021



## INSIDE THE JULY EDITION

- *Chair's Welcome*
- *Introduction by the Parish Clerk*
- *Deadline Dates*
- *Salden Chase Update*
- *Summer at Bletchley Youth Centre*
- *Summer in MK3*
- *Project Report, YMCA*
- *MK Money Lifeline*
- *Chepstow Park*
- *Climate Change*
- *Landscaping*
- *The Marc and Frank Moran Centre*
- *Councillors Map*
- *West Bletchley Sensory Gardens*
- *Spirit of MK3 Community Awards*
- *School Report*
- *Parking Information*
- *Competitions*
- *West Bletchley Policing Team*
- **Noticeboard**
  - Committee Meeting Dates*
  - Office Opening Hours*
  - MP's Surgery*
  - Councillors Advice Surgeries*
- *Groundbreaking Bletchley & Fenny*



## CHAIR'S WELCOME

Welcome to the latest edition of Open Door featuring details of our free summer holiday play activities for children residing within the parish.

With summer now upon us I hope you will take the opportunity of getting out around the parish to see some of the improvements we have made to our parks and open spaces. Thank you to those residents who have joined the wildflower verge planting scheme. More information about this and other ways that we can help address climate change is featured at pages 8 and 9.

I would also like to record a special thank you to Mick and Jenny at the Melrose Avenue Resource Centre who provided support to local residents both during and after the recent flooding on the Scots Estate. The Centre has once again proved to be an invaluable community resource. Hope you enjoy the summer.

Best wishes

**CLLR VERONICA BELCHER**

Chair of West Bletchley Council

Letters should be sent to Open Door at  
**WEST BLETCHLEY COUNCIL**  
221 WHADDON WAY, BLETCHLEY,  
MILTON KEYNES, MK3 7DZ

Or email to [clerk@westbletchleycouncil.gov.uk](mailto:clerk@westbletchleycouncil.gov.uk)

## INTRODUCTION BY THE PARISH CLERK



I am pleased to introduce this year's summer edition of Open Door.

This edition features a range of articles about work and initiatives currently taking place within the parish as well as details of summer activities and events.

Our front cover captures the main features of our recent refurbishment of Flowers Walk Park following transfer of ownership of this land to West Bletchley Council. The Council has committed to seek to both protect and enhance open space within the parish and is continuing to secure ownership of land to facilitate this.

We are also delighted to be involved in the Bletchley and Fenny Stratford Town Deal supporting plans to regenerate the local area. Further information is featured on the back page of this edition with details of a new engagement website where you will be able to share your ideas on developing plans for the future of Central Bletchley.

Lastly, I would again draw your attention to our "Salden Chase" update at page 4. Please continue to check our website for further updates on proposals for development on land adjacent to the parish.

### HELEN HUPTON

Clerk to West Bletchley Council

## DEADLINE DATE FOR OPEN DOOR 2021

If you would like to place an article in the Open Door newsletter, the deadline dates for 2021 are as follows:-

**Monday 13th September**  
(distribution on Thursday 14th October)

NB:- The Open Door newsletter is published on a quarterly basis to provide information to residents about the Council, its services and amenities or other local service providers, and community groups. Any advertisements for commercial businesses will not be considered.



**IF** Milton Keynes International Festival 2021

**10-30 July**  
**21 incredible days**  
**Time to enjoy**  
**Space to discover**

**FREE SHOWS**

**FAMILY ACTIVITIES**

**3D INSTALLATIONS**

**COMEDY**

**MUSIC**

**OUTDOOR EVENTS**

**ifmiltonkeynes.org**  
@IFMKfest #IFMKfest  
Box Office 01908 280800

Presented by **stables** in partnership with **ARTS COUNCIL ENGLAND** with support from **central bank** in association with **centrelink**



## SALDEN CHASE UPDATE

In the last edition of Open Door we advised that the Public Inquiry, to consider the appeal against Milton Keynes Council's decision to refuse permission for the Salden Chase Highways Planning Application (**Ref:15/00619/FUL**), had commenced on the 11th May 2021 and was expected to last for up to 9 days, ending on or before 25th May 2021.



Experts appointed by West Bletchley Council, together with Newton Longville Parish Council, presented our objections to this application at the Public Inquiry.

The presentation of evidence and cross examination ran for longer than anticipated and it was agreed that closing statements be submitted in writing by 16th June 2021.

The Planning Inspector's decision is now awaited.

**Please continue to check our website at: [www.westbletchleycouncil.gov.uk](http://www.westbletchleycouncil.gov.uk) for updates.**



SUMMER AT  
*Bletchley*  
**YOUTH**  
CENTRE



**YOUTH CLUBS THURSDAYS 29 JULY, 5, 12, 19 AUGUST**  
**Juniors 5-6.30pm / Seniors 7-9pm**

**SUMMER FUN DAYS WITH SPORT & FITNESS,  
SPRAY PAINTING, LUNCH & SNACKS**  
**MONDAY 23RD AUG, 10am-3pm JUNIORS**  
**TUESDAY 24TH AUG, 10am-3pm SENIORS**

ALL SUMMER  
SESSIONS  
FREE!!!



**DERWENT DRIVE  
BLETCHLEY  
MK3 7BE**

**CONTACT:**  
**DEBRA 07483 107016**  
**F: [youthnetworkmk](mailto:youthnetworkmk)**  
**W: [ynmk.org.uk](http://ynmk.org.uk)**



COMING SOON...

# SUMMER IN MK3



## ***MKPA Family Play Sessions***

**Bletchley Youth Club**

From 26th July to 23rd Aug on  
Monday afternoons  
2pm to 4:30pm

**Rickley Park**

From 27th July to 24th Aug on  
Tuesday mornings  
10am to 12:30pm

**Chepstow Park**

From 29th July to 26th Aug on  
Thursday mornings  
10am to 12:30pm

## **BANDS ON THE GREEN**

**Milton Keynes  
Brass Bands!**

**Sundays - 2-4pm**

Further information will be  
posted on our Facebook  
pages and website

Interested in performing? Contact  
[nicole.haviland@westbletchleycouncil.gov.uk](mailto:nicole.haviland@westbletchleycouncil.gov.uk)



*CHECK [FACEBOOK.COM/FRANKMORANMARC](https://www.facebook.com/frankmoranmarc)  
FOR THE LATEST INFO*



## PROJECT REPORT - FURNISHING A ROOM AT YMCA MILTON KEYNES

**Following the generous grant from West Bletchley Council the YMCA Milton Keynes were able to furnish a room, in the new purpose-built facility.**

This building has increased capacity and significantly improves the level of support being offered to residents. YMCA MK is now home to 226 young people, with an average age of 22. In February 2021 there were 38 people on the waiting list for supported accommodation, and in response to increased need they have refurbished 7 rooms into further accommodation for young people. Items included in the refit include installation of a fire door, small double bed, wardrobes, desk with chair, curtains, television and comfortable chair. This project has also included the installation of a kitchen as the studio flats have the shared use of a kitchen.



# YMCA

## mk moneylifeline

Our weekly debit advice drop-in at the  
**Frank Moran Centre, Melrose Avenue, Bletchley,**  
is held every **Tuesday** from **10.00am** until **12noon**.

Working in association with:

**cma**  
Freedom from debt  
Hope for the future  
Community Money Advice

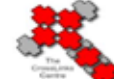


**SHENLEY**  
CHRISTIAN FELLOWSHIP  
A BAPTIST CHURCH IN MILTON KEYNES

**St Mary's**  
Bletchley



**Grace**  
CHURCH



**The Gospel Way**  
Centre



**mkcommunity**  
foundation

Tel: 0300 123 5198 / 01908 550630 • office@mkmoneylifeline.org.uk • www.mkmoneylifeline.org.uk  
Authorised and regulated by the Financial Conduct Authority No. 618802 • MK Money Lifeline is a company limited  
by guarantee registered in England and Wales with company number 07917713. Registered charity No 1146001



## CHEPSTOW PARK

Since West Bletchley Council took ownership of the park in October 2020, we have taken a series of actions to improve the facilities including carrying out tree works, installing new football goals along with commencing a programme of refurbishment to the four play areas within the park.



All tree works carried out were identified as necessary following a Tree Risk Assessment Survey carried out by Arboricultural Consultants.



Along with ongoing landscaping improvements in line with the Biodiversity & Habitat Assessment, we will be installing a new noticeboard and entrance signs. We are working hard to maintain the Green Flag status whilst planning for future upgrades and improvements across the park.

## FLOWERS PARK

We are pleased to announce that the new play area at Flowers Park officially opened at the end of June. Just minutes after the site was completed and the fencing removed, we were pleased to see several children running excitedly to try out the equipment. We have already received many compliments about the design and standard of the park and look forward to many hours of use by families of all ages.



## CLIMATE EMERGENCY

### BIODIVERSITY

We have received many positive comments about areas where we reduced grass cutting to encourage increased biodiversity and opportunities for insects and pollinators. We installed temporary signage to assist in highlighting locations to residents. Going forward, over a period of time, we aim to expand these areas where suitable, with the 'MK3 Bee' sign denoting all such sites.



### LOFT INSULATION

The additional loft insulation has now been installed at our building in Whaddon Way, bringing it up to the recommended levels.

### GREEN INFRASTRUCTURE STRATEGY

We have now commissioned the production of the Green Infrastructure Strategy building on the Character Assessment completed during the development of the West Bletchley Neighbourhood Plan and the recently completed Biodiversity/Habitat Assessment. The climate and nature emergency has shown that our environment can be very fragile and needs careful management to flourish. Our appreciation of our blue and green assets has also grown since the start of the COVID-19 outbreak. Green infrastructure is about connecting places and habitats to make them the best they can be. It includes things like:

- parks and open spaces
- woodlands • allotments and private gardens
- natural flood defences and drainage systems

Our main goal in developing a GI strategy is to protect and enhance the Green Infrastructure network within West Bletchley and support the Council's declaration of a climate emergency in 2019. We aim to use the strategy to inform our decision making, planning policy, and development management. We think this will create a healthier and more attractive place for residents, with better access to nature and high-quality open spaces. It will also improve biodiversity across the parish.

### WILDFLOWER/VERGE PLANTING PROJECT



Pictures are coming in of our residents' wonderful efforts!

If you would like more information about the scheme, contact the Environmental Projects Officer on

[admin@westbletchleycouncil.gov.uk](mailto:admin@westbletchleycouncil.gov.uk)

**#ProudtobeMK3**



## DO YOU KNOW YOUR CARBON FOOTPRINT FIGURE?

A carbon footprint is an estimate of the amount of carbon (more specifically the amount of carbon dioxide equivalents) that a person emits each year based on their lifestyle. All of us have a carbon footprint and in the UK almost all of us need to reduce it dramatically over the next decade. It's important because the amount of carbon we all emit is directly related to the amount of global warming and climate change that we will see.

## HOW TO MEASURE YOUR CARBON FOOTPRINT?

You are now able to measure your personal carbon footprint through a web-App called Giki Zero.

The easy-to-use App will estimate your carbon footprint with just a few questions. It will then identify simple steps you can take that suit your lifestyle and budget. Use Giki Zero to build your personal path to Zero carbon emissions.



**You can get the App at this link :** <https://zero.giki.earth/> once signed up you can access from a pc, tablet or your smart phone.

## WHY DO IT?

There's no sugar coating this one. Global carbon emissions are still rising, the world is getting hotter, animals are under threat and people around the world are already being affected by floods, droughts, fires and rising sea levels. We all need to live more sustainably and move towards Net Zero.

You'll be finding new steps you can take to reduce your carbon footprint. At the same time you'll also find steps that can save you money, improve your health, protect animals, and reduce plastic use. You'll also be able to share what you are doing with colleagues, friends and your family.

## BIG BEE CHALLENGE WEEKEND

BBC Radio 2 launched the Big Bee Challenge in June - a three-year project to raise awareness and encourage listeners to help create a better environment to support bees and other pollinating insects. As part of the campaign they are promoting the Big Bee Challenge Weekend on: **Saturday 31 July and Sunday**

**1 August** when they are encouraging everyone to get involved and do just one thing in their garden, window box or outdoor space that will entice pollinating insects.

From planting bee-friendly herbs, flowers or shrubs to providing water for the bees or leaving the lawn unmown, there will be something for everyone to try. Wouldn't it 'bee' lovely to see as many MK3 residents taking part and encouraging more bees and pollinating insects? **Send us your pictures and stories so we can share on our social media** and why not follow it all on social media at **@BBCRadio2** and **#BigBeeChallenge**.



**#ProudtobeMK3**

## LANDSCAPING

As we move into Summer, following a warm and wet Spring, the growth of the grass is beginning to slow down and the regular mowing regime is resuming. Several of the areas where we have introduced a "20% for wildlife" approach have begun to establish as seen in the pictures below. We have received many positive comments from residents and it would be lovely to hear of any interesting 'sightings' within any of these areas. Post your pictures on our Facebook page or email to: [admin@westbletchleycouncil.gov.uk](mailto:admin@westbletchleycouncil.gov.uk)



### TREE WORKS AND LOG PILES

Over the Autumn/Winter period you may have noticed works taking place on the trees in a number of our parks and open spaces. As West Bletchley Council begins to take ownership of more areas of open space, we arrange inspections by approved Arboricultural Consultants to identify any trees which require attention to reduce or remove any risk posed to the public or property. Any such works are then carried out strictly in accordance with the resulting assessment.



Wherever possible we aim to utilise all logs and arisings resulting from the works on site, by creating log piles, leaf mounds and chipping into the surrounding area. In some instances, we also consider the option for creating natural play features such as the one recently installed at Flowers Park.





## THE MARC AND FRANK MORAN CENTRE

With lockdown rules easing, we've been able to run half-term play sessions with MKPA, as well as bring back the MARC Crafters session to Monday afternoons. Projects so far have included bunting for the Church Green Road sensory garden, and tree huggers for MK3's greenery. With our walking group and Over 55s Drop-in also on the same day, there is now a full itinerary available on Mondays. If you, or someone you know, would like to take part please call **Mick and Jenny on 01908 370348.**



Food is a key part of the work we do, and the past couple of months have brought even more selection! A collaboration with St. Andrew's Church has resulted in Gregg's sandwiches and baked goodies, and we have increased our supply of vegan and gluten-free Gosh products, provided via Food Connect. We have also recently added pet food to our supplies, kindly donated by Jollyes Pet Superstore and its customers.

The centre takes many guises and once again became a polling station for May's elections. In June, it became a reception for displaced residents following the terrible flooding in Angus Drive and Moray Place. We provided a safe hub and worked with MK Council and British Red Cross to help affected residents. Support is still available, and anyone in need can call or drop into the centre.

If government restrictions are lifted as expected, we are optimistic that we can put on a full programme of summer activities, including the ever-popular fish and chip quiz, seaside coach trip and school holiday craft sessions. Either way, MKPA will be back in the area with outdoor play schemes throughout the summer, setting up at Rickley Park, Chepstow Park and Bletchley Youth Centre. Call us or keep a close eye on our social media pages for the latest plans.



### STAY UPDATED!

Facebook: **[facebook.com/frankmoranMARC](https://www.facebook.com/frankmoranMARC)**

Twitter: **[@frankmoranMARC](https://twitter.com/frankmoranMARC)**

Instagram: **[@frankmoranmarc](https://www.instagram.com/frankmoranmarc)**

Tel: **01908 370348**





## SCOTS



**BARBARA MOORE**

**07872 624412**

Cllr.barbara.moore@westbletchleycouncil.gov.uk

**Finance  
& General Purposes**



**FELICITY COCKBAINE**

Cllr.felicity.cockbaine@westbletchleycouncil.gov.uk

**Community & Finance  
& General Purposes**

VACANT

## COUNTIES



**PAUL HARVEY**

Cllr.paul.harvey@westbletchleycouncil.gov.uk

**Planning & Environment**



**NIGEL LONG  
01908 376141**

Cllr.nigel.long@westbletchleycouncil.gov.uk

**Planning  
& General Purposes**



**SHAKEEL SIBTAIN**

Cllr.shakeel.sibtain@westbletchleycouncil.gov.uk

## RIVERS



**VERONICA BELCHER**

**01908 371802**

Cllr.veronica.belcher@westbletchleycouncil.gov.uk

**CHAIR OF COUNCIL**



**RAY BRADY  
07541 438485**

Cllr.ray.brady@westbletchleycouncil.gov.uk

**Community,  
Finance & General Purposes,  
Parking Sub,  
Planning & Environment,  
Salden Chase Sub**



**NAOMI SINCLAIR**

Cllr.naomi.sinclair@westbletchleycouncil.gov.uk

**Community**

## FAIRWAYS



**SHERY DELFANI**

Cllr.shery.delfani@westbletchleycouncil.gov.uk

**Community, Finance &  
General Purposes, Parking Sub  
Planning & Environment**



**DEREK HIRCOCK**

Cllr.derek.hircock@westbletchleycouncil.gov.uk

**Planning & Environment**

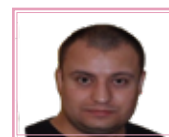


**IAIN LAYDEN**

Cllr.iain.layden@westbletchleycouncil.gov.uk

**Community,  
Planning & Environment**

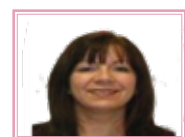
## RACECOURSES



**JAMES BUTSON**

Cllr.james.butson@westbletchleycouncil.gov.uk

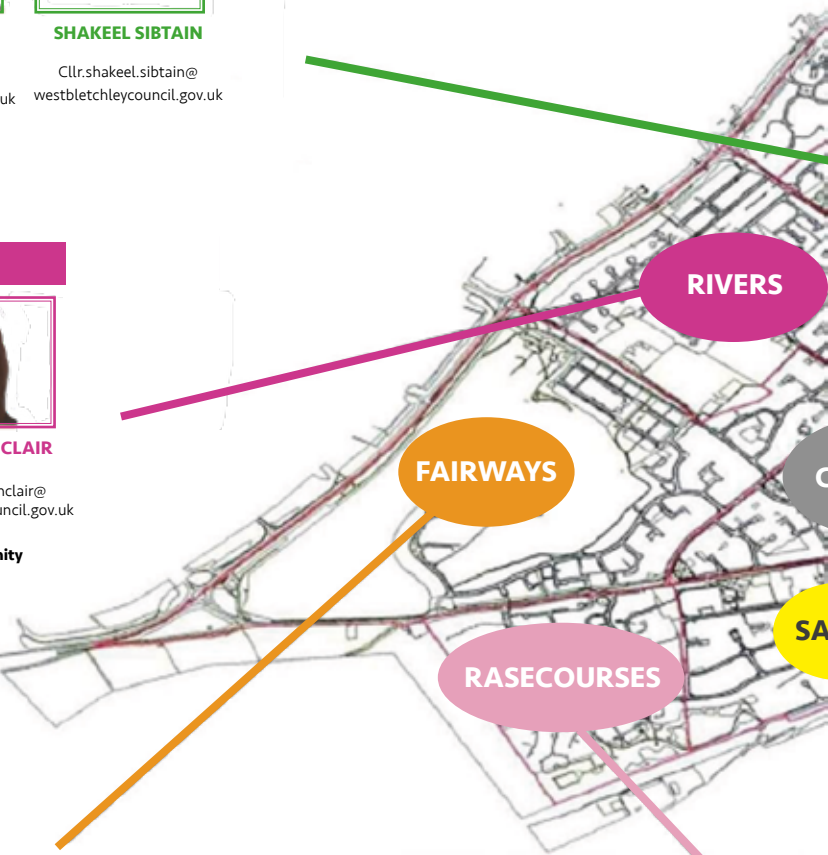
**Planning & Environment,  
Parking Sub**



**ELAINE WALES**

Cllr.elaine.wales@westbletchleycouncil.gov.uk

**Parking Sub,  
Planning & Environment,  
Salden Chase Sub**



## ABBEYS



**GERALDINE HELDER**

Cllr.geraldine.helder@  
westbletchleycouncil.gov.uk

**Planning & Environment**



**KIT POWER**

Cllr.kit.power@  
westbletchleycouncil.gov.uk



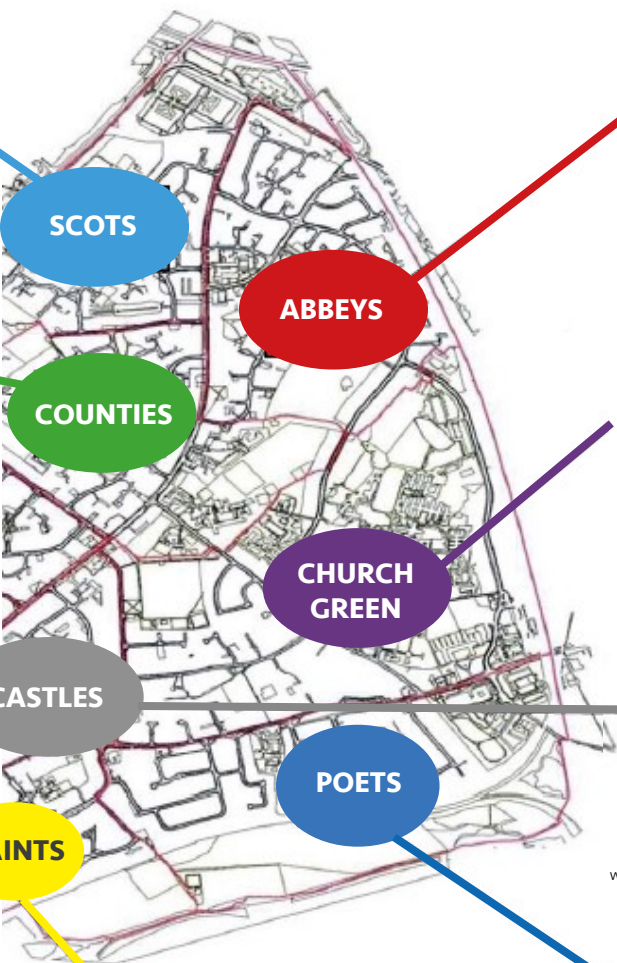
**TINA WALSH**

Cllr.tina.walsh@  
westbletchleycouncil.gov.uk

**Community**



VACANT



## CHURCH GREEN



**WAQAS AHMAD**

Cllr.waqas.ahmad@  
westbletchleycouncil.gov.uk

**Community  
Planning & Environment**



**JIM KEARON**

Cllr.jim.kearon@  
westbletchleycouncil.gov.uk

**Finance & General  
Purposes, Parking Sub,  
Planning & Environment**



**NEBEEL NAZIR**

Cllr.nabeel.nazir@  
westbletchleycouncil.gov.uk

**Finance  
& General Purposes,  
Salden Chase Sub**

## CASTLES



**MATTHEW BURN**

Cllr.matthew.burn@  
westbletchleycouncil.gov.uk



**SUSAN LONG**

**01908 376141**  
Cllr.susan.long@  
westbletchleycouncil.gov.uk

**Community**



**GLADSTONE MCKENZIE**

Cllr.gladstone.mckezsie@  
westbletchleycouncil.gov.uk

**Finance &  
General Purposes,  
Planning & Environment**

## SAINTS



**ANDY COATON**

Cllr.andy.coaton@  
westbletchleycouncil.gov.uk

**Salden Chase Sub**



**ERNIE THOMAS  
01908 379748**

Cllr.ernie.thomas@  
westbletchleycouncil.gov.uk

**VICE-CHAIR OF COUNCIL**

## POETS



**PAUL MOORE**

Cllr.paul.moore@  
westbletchleycouncil.gov.uk

**Community,  
Finance & General Purposes,  
Planning & Environment**



**MICHAEL DONALD**

Cllr.michael.donald@  
westbletchleycouncil.gov.uk

**Planning & Environment,  
Salden Chase Sub**





### WEST BLETCHLEY SENSORY GARDENS

The Sensory Gardens volunteer group have continued to do a fantastic job to maintain and improve the gardens for everyone to enjoy. The garden is by St Mary's Church and the Memorial Green off Church Green Road. You can visit anytime of the day where you can sit in quiet contemplation, smell the many wonderful fragrances of the roses or sample the bountiful herbs. Residents can cut herbs to take home for culinary use.







West Blatchley Council Presents

# SPIRIT OF MK3 COMMUNITY AWARDS 2021

Presentation of awards will be in November

Nominate your friends, family and colleagues for,

COMMUNITY VOLUNTEER AWARD | GROUP AWARD  
COMMUNITY HERO AWARD | ENVIRONMENTAL AWARD  
YOUNG PERSONS ACHIEVEMENT AWARD

## AWARD TYPES

### *Community Volunteer Award*

An individual award given to a member of the community for voluntary services such as giving their time, fundraising or raising awareness for a local charity. This can be volunteering within an organisation or on their own.

### *Community Group Award*

Open to any group - sporting, hobby, church, educational or any other group of people who meet regularly. Nominations should be for groups that enrich and improve the lives of their members or the wider community.

### *Community Hero Award*

An individual award to be given to a member of the community who has made a difference to the lives of others.

### *Environmental Award*

An individual who is working hard to improve the environment and helping to raise awareness of environmental issues. It can be anything from organising litter picks, reducing their carbon footprint or engaging with others to recycle.

### *Community Volunteer Award*

For any young person under the age of 18 years who has excelled in supporting the community, sportsmanship, volunteering or has made a difference to the lives of others.

To make a nomination, please contact Nicole on 01908 370348 or email  
[nicole.haviland@westblatchleycouncil.gov.uk](mailto:nicole.haviland@westblatchleycouncil.gov.uk)  
(Deadline for nominations will be beginning of November, 2021)

**West Bletchley Council**  
**Spirit of MK3 Community 2021 Awards**  
**Nomination form**



**Your Details**

1. Name \_\_\_\_\_
2. Address (inc. postcode) \_\_\_\_\_

**Nominee's Details**

1. Nominee Name/ Organisation \_\_\_\_\_
2. Nominee Address (inc. postcode) \_\_\_\_\_
3. Nominee Telephone Number \_\_\_\_\_
4. Age (Youth Award only) \_\_\_\_\_
5. Signature of nominee (under 18s will need a parent /carer to sign for them) \_\_\_\_\_

☐ The nominee must tick this box to confirm that they agree to the nomination and for WBC to hold and process their personal data.

**Category:** Community Hero Award/Group Award/Community Volunteer Award/Environment Award/Young Person's Achievement Award (Highlight as applicable)

**Judging Criterion**

Nominations to be made using this form. Please return the completed form to the Frank Moran Centre or the Council office or by email. Anyone can make a nomination as long as the nominee or organisation lives, works, studies or is based in the West Bletchley Parish area.

**Supporting Statement**

Briefly explain the reasons for your nomination (please continue on a separate page if necessary)

**Data Consent**

By completing this form you are confirming that you are consenting to West Bletchley Council (WBC) holding and processing your personal data. This information will be held for 12 month after the closing date for nominations.

West Bletchley Council will need the consent of the nominee for the nomination to be completed. Any nominations for under 18s will require parental/carers consent.

Information about how we use your data is detailed in our "Privacy Notice" which is available on our website [www.westbletchleycouncil.gov.uk](http://www.westbletchleycouncil.gov.uk)

Deadline for the nominations, beginning of November (final date TBC).

Return completed form to:

West Bletchley Council, 221 Whaddon Way, Bletchley, Milton Keynes, MK3 7DZ or

The Frank Moran Centre, Melrose Ave, Bletchley, Milton Keynes MK3 6PA

[Nicole.haviland@westbletchleycouncil.gov.uk](mailto:Nicole.haviland@westbletchleycouncil.gov.uk)

## EXCITING TIMES AT CHESTNUT PRIMARY SCHOOL

### PSQM:

After almost eighteen months of hard work (which should only have been nine but was delayed due to Covid) we are delighted that the school has been awarded the Primary Science Quality Mark (PSQM). This is in recognition of all of the hard work staff and pupils have put in to promote and enhance the quality of Science teaching and learning at our school. The deputy director of PSQM has commended us by saying 'Congratulations to everyone at Chestnuts Primary School and to the science lead on the achievement of the Primary Science Quality Mark. It is wonderful to see how you are developing science across the school despite the challenges of the past year'.

### We are expanding:

We are also really excited that from September 2022 we will be opening our own pre-school at Chestnuts. We will also be expanding on our current provision to offer parents wrap-around-care. We are super excited for the future of Chestnuts with these fabulous additions!

### Royal news:

In Autumn term, our lovely Year 2's wrote letters to Prince William about the Earthshot prize and created some wonderful posters on ocean pollution. We were most excited to get a reply! The children were super chuffed as they all got a copy to read and take home. They were glad that the Duke of Cambridge appreciated their concern for the environment!



### RICKLEY READ DAY!

We are very proud of our library at Rickley Park and the children enjoy their visits. However, since our last overhaul there have been so many fabulous books released that we just can't keep up! So, we asked our school community to support us in purchasing more books for reluctant and struggling readers to help them succeed.

On Friday 30th April we held a Rickley Reads day. Children came to school in non-uniform and gave a donation of £1. On the day we had a range of reading related activities. We also set up a wish list on Amazon and were overwhelmed by the generosity of our parents! Mrs Bull (English Lead) and Miss Varney (Library Lead) explained, "Reading is the most important skill we can teach our children to help them succeed in school and research has shown that children who read for enjoyment progress better in secondary education – so we feel that our library is a top priority for the school." After the success of Rickley Reads and with books donated or purchased through raised funds, there is more enjoyment to be had in our library than ever!



## PARKING INFORMATION

West Bletchley Council regularly receives complaints about nuisance parking, despite having no power to regulate it. Concerns about parking that poses an immediate danger to the public should be reported to Thames Valley Police online or by calling the non-emergency number **101**.

***This includes vehicles parked:***

- on zig zag lines or a pedestrian crossing
- in a way that would prevent emergency vehicles from gaining access
- dangerously



Vehicles that are parked in contravention of a legal parking restriction are parking concerns that should be reported to **Milton Keynes Council for enforcement**:  
**[www.milton-keynes.gov.uk](http://www.milton-keynes.gov.uk)** Tel: **01908 252570**.

***These include vehicles parked:***

- opposite or within ten metres of a junction
  - over a dropped kerb
- in spaces reserved for Blue Badge holders, residents or motorbikes (unless entitled to do so)
- in marked taxi bays or cycle lanes
  - near a school entrance
  - near a bus stop
- on double yellow lines

If a parking space is available on a public road, even if it is directly outside your house, anyone is allowed to park there. However frustrating, this is not a matter for the police, the council or the fire and rescue service. If someone parks on your driveway without your permission, this is trespassing which is a civil dispute. Again, this is not a matter for the police or the council.

**COLOUR IN OUR JULY PICTURE TO WIN A  
GIFT CARD 1ST PRIZE = £10, 2ND PRIZE = £5**



This competition is open to all children under the age of 10 living in West Bletchley. To enter just colour in the picture, fill in the entry form then cut it out and send it to us at West Bletchley Council, 221 Whaddon Way, Bletchley, Milton Keynes, MK3 7DZ. The closing date for entries is **27TH August 2021**. (Winners names will be published in the next edition)

Name .....Age.....

Address.....

.....

..... Post Code .....

Telephone .....

## COMPLETE OUR **JULY** WORDSEARCH TO WIN A £15 GIFT CARD

A	P	A	R	T	Y	B	B	Q	Y	P
Y	G	R	E	L	L	A	W	N	L	S
M	H	N	D	D	A	I	S	Y	U	A
I	T	N	R	V	Z	R	G	I	J	W
W	A	L	K	E	Y	A	N	H	L	H
S	H	U	M	I	D	I	X	F	T	T
F	C	O	E	O	K	N	A	G	N	K
A	N	N	T	I	Y	I	U	A	K	H
N	U	S	B	T	R	S	T	H	I	E
J	P	E	D	A	H	S	A	K	T	A
B	O	A	T	P	Q	E	E	E	E	T

ALLERGY  
ANT  
BBQ  
BIKINI  
BOAT

DAISY  
EASY  
FAIR  
FAN  
HEAT

HIKE  
HOT  
HUMID  
JULY  
JUNE

KITE  
LAWN  
LAZY  
LIGHT  
PARTY

PATIO  
PUNCH  
RAIN  
SAND  
SEA

SHADE  
SUN  
SWIM  
TAN  
TENT

THUNDER  
WALK  
WASP

This competition is open to all residents of West Bletchley. When you have completed the crossword, fill in the entry form then cut it out and send it to us at West Bletchley Council, 221 Whaddon Way, Bletchley, Milton Keynes MK3 7DZ. All correct entries will be put into a hat and winners drawn out. The closing date for entries is **27th August 2021**. (Winners names will be published in the next edition)

Name .....

Address.....

..... Post Code .....

Telephone .....



## WEST BLETCHLEY POLICING TEAM

Safeguarding Our Local Residents

Your neighbourhood team are working closely with the West Bletchley Parish Council to raise awareness of **summer-time burglaries**.



In previous years we have seen a spike in burglary offences at this time of year. We believe that the hot weather, and residences going on holiday, is a key factor linked to this increase. We are already working hard to keep our residents' properties safe with increased patrols in the area, and by holding recent pop-up crime prevention events.

### Here's what you can do to protect your property:

#### Staying at home?

- Don't leave valuables or car keys by open windows and doors. Double check that your vehicle is locked too.

#### • In your garden?

- Lock your doors and close your windows.
- Double lock your doors using the key and make sure your windows are closed, even if you are just popping out.
- Do not leave garden tools, ladders etc. where they are easily accessible in your garden. They could be used to break into your home. Make sure your shed is secure.
- Ensure side gates are locked, to prevent access to the rear of the property. Move bins away from side walls and fences.



#### Going away?

- Going on holiday? Make it look like you are at home.
- Use timer switches for lights and radios to make your house look occupied; even when it isn't.
- Lock all windows and doors.
- Cancel milk and newspaper deliveries. This is a clear indication that no one is home.
- Ask someone you trust to keep an eye on the house while you are away.
- Don't advertise that you are going on holiday on social network sites. Wait until you are home to upload your snaps.
- Check your home insurance policy as some may pay out less, or not at all, if you have posted that you are away on social media.
- Don't leave spare keys in obvious places, such as under door mats or plant pots.
- Service/maintain your burglar alarm.

Consider joining Neighbourhood Watch [www.ourwatch.org.uk](http://www.ourwatch.org.uk) and/or

**Thames Valley Alerts** [www.thamesvalleyalert.co.uk](http://www.thamesvalleyalert.co.uk)

For further information on crime prevention this summer visit [www.thamesvalley.police.uk](http://www.thamesvalley.police.uk)



CALL YOUR  
LOCAL  
POLICE



**101**

IN AN  
EMERGENCY  
ALWAYS  
CALL 999

Thames Valley  
**ALERT**



**CRIMESTOPPERS**  
0800 555 111  
Let us help you prevent crime

# NOTICEBOARD



## New COGS Club



### Two-hour sessions for older people with mild to moderate dementia - starting Monday 5th July

Enjoy a weekly session of MCST (Maintenance Cognitive Stimulation Therapy) in a caring, supportive environment. Small groups, covid-safe building.

Mondays and Wednesdays at The Peartree Centre, 1 Chadds Lane, Milton Keynes MK6 3EB. 10AM till 12PM, £10 per person.

For more information please call

**01908 550700**

email [info@ageukmiltonkeynes.org.uk](mailto:info@ageukmiltonkeynes.org.uk)  
or visit [www.ageukmiltonkeynes.org.uk](http://www.ageukmiltonkeynes.org.uk)

Age UK Milton Keynes is a charitable company limited by guarantee and registered in England and Wales  
Registered Charity Number: 1079773  
Company Number: 3897291

The Peartree Centre, 1 Chadds Lane, Peartree Bridge,  
Milton Keynes, MK6 3EB

## FUTURE MEETINGS

*West Bletchley Council is a very busy organisation. It holds committee meetings and all councillors meet together bi-monthly.*

*All meetings of the council are open to the public. Attendance to meetings are limited at present in line with **current government restrictions**.*

*Anyone wishing to attend meetings should contact the Clerk in advance either by phone **01908 648257** or email: [clerk@westbletchleycouncil.gov.uk](mailto:clerk@westbletchleycouncil.gov.uk)*

*All attendees will be required to register contact details upon arrival.*

*Face coverings are to be worn throughout meetings unless exempt.*

*Meetings usually start at 7.30 pm except for the Planning & Environment Committee which starts at 7 pm.*

## COMMITTEE MEETING DATES FROM JUNE 2021

Monday 19th July	Community
Monday 26th July	Parking Sub
Monday 2nd August	Finance & General Purposes
Tuesday 17th August	Full Council
Monday 13th September	Planning & Environment
Monday 20th September	Community
Monday 27th September	Parking Sub
Monday 11th October	Finance & General Purposes
Tuesday 26th October	Full Council

### West Bletchley Council Statement

*West Bletchley Council's acceptance of any advertisement with the Open Door newsletter shall under no circumstances be considered an endorsement of the products and/or services advertised.*



# NOTICEBOARD

## OPEN HOURS

### West Bletchley Council

#### Office opening hours:

Monday to Friday 9.30 am to 4 pm

E-mail: [Clerk@westbletchleycouncil.gov.uk](mailto:Clerk@westbletchleycouncil.gov.uk)

Main Office, The Clerk, 221 Whaddon Way  
Bletchley, Milton Keynes MK3 7DZ

Telephone: 01908 648257

[www.westbletchleycouncil.gov.uk](http://www.westbletchleycouncil.gov.uk)

## MP'S SURGERY



### MP's Surgery

Our local MP, Iain Stewart would like to hear from you.

He holds regular surgeries by appointment across the constituency.  
To book a surgery appointment:

Please call: 01908 686830

Please email:

[iain.stewart.mp@parliament.uk](mailto:iain.stewart.mp@parliament.uk)

Please write to: Suite 102  
Milton Keynes Business Centre  
Foxhunter Drive  
Linford Wood  
MK14 6GD

## MILTON KEYNES COUNCILLORS

### BLETCHLEY WEST WARD



**CLLRS MICK LEGG & LAUREN TOWNSEND**  
**Councillors' Resident Advice Surgery**  
**Commencing 6th July 2021**  
**Every Tuesday Evening 6-7pm**

The Frank Moran Centre, Melrose Avenue  
Bletchley, MK3 6PA

*(Please note social distancing measures will be in place.  
Facemasks must be worn unless exempt)*

**MICK LEGG 07920 103239**

email: [mick.legg@milton-keynes.gov.uk](mailto:mick.legg@milton-keynes.gov.uk)

**LAUREN TOWNSEND 07599 886744**

email: [lauren.townsend@milton-keynes.gov.uk](mailto:lauren.townsend@milton-keynes.gov.uk)

**COUNCILLOR ADAM ROLFE**

email: [adam.rolfe@milton-keynes.gov.uk](mailto:adam.rolfe@milton-keynes.gov.uk)

### BLETCHLEY PARK WARD

***If you need to get in contact with these Councillors  
their contact details are:-***



**COUNCILLOR  
RANKINE**

email: [allan.rankine@milton-keynes.gov.uk](mailto:allan.rankine@milton-keynes.gov.uk)



**COUNCILLOR  
NAZIR**

Tel. No. 07786 660025

email: [nabeel.nazir@milton-keynes.gov.uk](mailto:nabeel.nazir@milton-keynes.gov.uk)

**COUNCILLOR IMRAN**

email: [mo.imran@milton-keynes.gov.uk](mailto:mo.imran@milton-keynes.gov.uk)



### CENTRAL BLETCHLEY, JULY 2021

Milton Keynes Council is starting work on a Central Bletchley Urban Design Framework Supplementary Planning Document (SPD).

The SPD will be a formal planning document setting out design guidance for the area covered by the Central Bletchley Prospectus and Plan:MK Policy SD16, shown on the map below. It will help deliver the future vision for Central Bletchley (reflecting the benefits of improved connections created by East West Rail) and will provide valuable information for landowners and developers on the design principles which should be addressed in planning applications for new development.



The SPD will also support the preparation of the business cases and the delivery of a number of the projects in the Bletchley and Fenny Stratford Town Deal, particularly the improvements to public realm in Bletchley town centre, the Transport Hub and the Innovation Hub.

### Getting Involved with the SPD

The involvement of local people and businesses is an important part of the SPD's preparation process. A lot of issues and opportunities for the wider Bletchley area have already been raised in previous consultations including for the Prospectus and, more recently, for the Bletchley and Fenny Stratford Town Deal and these provide a vital starting point for this work.

Over the coming months we will be inviting everyone to contribute their ideas to help develop the plans for the future of Central Bletchley. Later this month you will be able to share your ideas via our engagement website: **[www.centralbletchleyspd.com](http://www.centralbletchleyspd.com)**. There will be more information about this and other ways to get involved available from the West Bletchley Council website and on **[www.groundbreakingbletchleyandfenny.co.uk](http://www.groundbreakingbletchleyandfenny.co.uk)**

### BLETCHLEY AND FENNY STRATFORD TOWN DEAL

The demolition of Bletchley's former fire station has signalled the start of works that will deliver multi-million pound improvements in Bletchley and Fenny Stratford funded by the Town Deal.

Work is now underway to prepare the business case for each of the Town Deal projects many of which will benefit from the ideas being gathered for the SPD.

