

open door



THE OFFICIAL NEWSLETTER OF WEST BLETCHLEY COUNCIL

MARCH 2020



INSIDE THE MARCH EDITION

- Chair's Welcome
- Introduction by the Parish Clerk
- Annual Parish Meeting
- Whaddon Way Residents
- Salden Chase Update
- East West Rail Phase 2 Update
- Deadline Dates for OpenDoor
- Windmill Hill Golf Course
- Landscape Maintenance
- Inconsiderate Parking / Protect Our Verges
- Central Bletchley Prospectus & Towns Fund Initiative
- 2020 West Bletchley Carnival
- Marc & Frank Moran Centre
- West Bletchley Council Tax Requirements 2020/21
- School Report
- Easter Activities
- Youth Counselling Service
- Community Space for Hire
- Children's Hour at Bletchley Library
- Spring Clean 2020
- October Competition Winners
- Scots Bowls Club
- St Martins Bowls Club
- Competitions
- Men In Sheds
- Worktree

- Noticeboard

Committee Meeting Dates

Office Opening Hours

MP's Surgery

Councillors Advice Surgeries

West Bletchley Councillors

CHAIR'S WELCOME



The current West Bletchley Council will complete its four years of office in May this year. So there will be elections for a new Parish Council on the first Thursday in May together with elections for Milton Keynes Council. There will be an opportunity to meet the new Council at the Annual Parish Meeting on 19th May. All residents are welcome to attend this meeting and ask questions of the Council.

As always at this time of year, the annual Council Tax requirements have been decided. And you will see an outline in Open Door of where we propose to spend our budget for the coming year. We have based this on what residents have told us they want us to do. For example, we will continue with being responsible for landscape maintenance in our area. We have a new landscape contractor starting in April. I'd like to thank our current contractor, RTM Landscapes, for their commitment to West Bletchley over the nearly 6 years they have been with us.

Finally, a reminder that Carnival 2020 is on 11th July this year – so do put that in your diary.

Best wishes

CLLR VERONICA BELCHER

Chair of West Bletchley Council

Letters should be sent to Open Door at
WEST BLETCHLEY COUNCIL
221 WHADDON WAY, BLETCHLEY,
MILTON KEYNES, MK3 7DZ

Or email to clerk@westbletchleycouncil.gov.uk

INTRODUCTION BY THE PARISH CLERK

I am delighted to introduce the Spring edition of Open Door.



This edition features some interesting news items alongside details and events taking place within the parish.

Read at page 5 about the current proposals to develop Windmill Hill Golf Club into a major Sports Hub. This is the subject of a current Milton Keynes wide consultation. We would urge all West Bletchley residents to take the time to look at these proposals and respond to the consultation which ends on 14th March 2020. Any residents without access to the internet are welcome to come to our offices to view the proposals.

West Bletchley's 19th Annual Carnival will take place on Saturday 11th July 2020. We have reviewed and decided to move the date of our annual carnival to take place in July. We hope this will benefit us twofold with both the chance of better weather and a higher level of participation from our local schools and community groups. Please continue to check our website for updates on this year's attractions and activities, including details of pre Carnival events.

Lastly, I would like to take the opportunity of advising you of the appointment of a new member of staff at West Bletchley Council. We are delighted to welcome Steve Bryant who has recently taken up post as the new Events and Engagement Officer. Steve is looking at extending our programme of community events so if you have any suggestions or ideas that you would like us to consider then please contact Steve on 01908 634033, e-mail: steve.bryant@westbletchleycouncil.gov.uk

HELEN HUPTON

Clerk to West Bletchley Council

ANNUAL PARISH MEETING OF WEST BLETCHLEY ELECTORS

TUESDAY 19TH MAY 2020

7.30PM

**221 WHADDON WAY,
BLETCHLEY**

This meeting is an opportunity for all electors of the parish of West Bletchley to ask questions of the Council and raise any issues relating to the Parish.

**This meeting will be followed by
West Bletchley Council's AGM**

WHADDON WAY RESIDENTS

**On Tuesday 10th March and
Wednesday 11th March**

Serco the cleansing contractor will bring in a mechanical sweeper to clean the kerb edges along the whole of Whaddon Way.

Please could residents not park along the **EVEN** house number side of Whaddon Way on **Tuesday 10th March** between 8am and midday.

Please could residents not park along the **ODD** house number side of Whaddon Way on **Wednesday 11th March** between 8am and midday.

SALDEN CHASE UPDATE

In the last edition of Open Door we advised that the Salden Chase Highways Planning Application (Ref:15/00619/FUL) was due to be considered by Milton Keynes Council's Planning Committee.

We are delighted to now advise that at its meeting held on 7th November 2019 Milton Keynes Council refused this application. Its reasons for refusing the application were as follows:



"That in the opinion of the Local Planning Authority there is insufficient evidence to mitigate the harm of this development in terms of increased traffic flow and impact on the highway and Grid Road network, with specific reference to Standing Way and Buckingham Road, thus this will be in contravention of Policies CT1 and CT2 (A1) of Plan:MK."

As previously reported West Bletchley Council had objected to this application.

Please continue to check our website at: www.westbletchleycouncil.gov.uk for updates on matters relating to proposals for development of land adjacent to the parish.

EAST WEST RAIL PHASE 2 UPDATE

We have recently received confirmation that the Secretary of State for Transport has approved the Transport and Works Act Order which will allow main construction work to the East West Rail (Bicester to Bedford improvements) to begin.

Once the TWAO comes into force, Network Rail and the East West Rail Alliance will begin the process of serving notice to take temporary possession and permanent acquisition of land, and can start making applications to discharge conditions to allow them to begin their main works programme.

Initial work will be to erect boundary fencing, clear vegetation along the railway corridor and carry out work to demolish and reconstruct parts of the Bletchley viaduct.

Any further information received will be published on our website at:
www.westbletchleycouncil.gov.uk

DEADLINE DATES FOR OPEN DOOR 2020

If you would like to place an article in the Open Door newsletter, the deadline dates for 2020 are as follows:

Tuesday 5th May

(distribution on Thursday 4th June)

Thursday 11th June

(distribution on Thursday 16th July)

Monday 14th September

(distribution on Thursday 15th October)

NB:- The Open Door newsletter is published on a quarterly basis to provide information to residents about the Council, its services and amenities or other local service providers, and community groups. Any advertisements for commercial businesses will not be considered.

WINDMILL HILL GOLF COURSE

Proposals for Development at Windmill Golf Course – Latest Update

In the last edition of Open Door we provided an update on proposals to develop the Windmill Hill Golf Course into a major Sports Hub.

We advised, at that time, of the following update provided by Officers at Milton Keynes Council:

“Following the last public exhibition and listening to local views the developer Evolve has made significant changes to the development proposals and a revised proposed layout plan has been produced.”

At the end of January we received correspondence from David Lock Associates Ltd advising that they had

been asked by Evolve to prepare a master plan for a revised scheme and would be undertaking a MK-wide consultation on the revised proposals.

The revised proposal together with details of each element of the proposed scheme are available to view on the SportsHub MK website at www.sportshubmk.com

**NB: Consultation ends
on 14th March 2020.**

Any further information received will be published on our website at:

www.westbletchleycouncil.gov.uk



Image of 'overall site' as shown on Sportshubmk website

LANDSCAPE MAINTENANCE

In 2014 Milton Keynes Council offered the option of devolving the landscape maintenance to the local Parish Councils with a grant. West Bletchley Council were one of the Councils that considered they could offer a more improved and better quality service and took on the agreement with Milton Keynes Council. The original agreement will end in March 2020 with a new 3 year agreement starting in April. The Parish have been through a rigorous tendering process and will have a new contractor from 1st April. The contractor are called Burleys who are part of the iverde group. They are a very experienced contractor carrying out many similar contracts, we look forward to a very positive partnership to further improve the landscape within West Bletchley.

Paul Slack, iverde Operations Director, said: "We are delighted to have won the contract and look forward to a very successful relationship with West Bletchley Council. West Bletchley residents can expect the same high standards of grounds maintenance that they are used to, and we look forward to continuing to make the outdoor spaces in West Bletchley pleasant areas for residents and visitors alike."

We would also like to thank RTM Landscapes our current contractor for all their help and support over the 5 years and 10 months they have worked improving the landscape within West Bletchley.

GRASS CUTTING SCHEDULE 2020 BETWEEN APRIL – OCTOBER

START

RICKLEY LANE / SHENLEY ROAD, CHURCH GREEN AREA, WHALLEY DRIVE AREA, BLETCHLEY PARK AREA / SHERWOOD DRIVE, MELROSE AREA, ALL WHADDON WAY, SCOTS ESTATE, COUNTIES ESTATE, RIVERS, TATTENHOE LANE, HUNSTANTON AREA, WINDMILL HILL DRIVE, CASTLES, RACECOURSES, SAINTS, POETS

FINISH

(THIS SCHEDULE WILL TAKE UPTO 3 WEEKS FROM START TO FINISH
DEPENDING ON WEATHER, GRASS GROWTH ETC.)

PARKS – FORTNIGHTLY ON A THURSDAY

WEEK 1

CHEPSTOW PARK: RICKLEY PARK: WHITELEY CRESCENT PARK:
CHURCH GREEN ROAD PARK:

WEEK 2


THE LEYS PARK: BARLEYHURST PARK: EIGHT BELLS PARK: SHERWOOD PARK:

*** PLEASE NOTE ALL GRASS CUTTING SCHEDULES HAVE TO BE FLEXIBLE DUE TO
POSSIBLE UNFORSEEN CIRCUMSTANCES I.E. HEAVY RAIN. ***





INCONSIDERATE PARKING



Would a fire engine be able to get to your home in an emergency? That's the question Buckinghamshire Fire & Rescue Service is asking residents throughout Buckinghamshire and Milton Keynes.

A fire engine needs 10ft (3 metres) clearance to pass safely. Streets congested with parked cars can delay fire engines and other emergency service vehicles attending an incident.



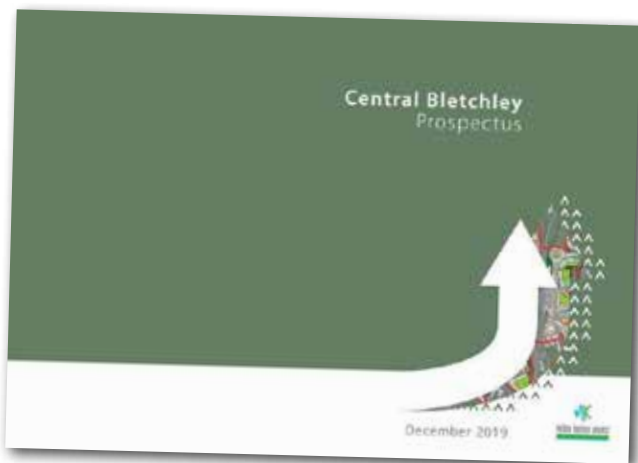
PROTECT OUR VERGES

The vast majority of drivers in West Bletchley do not park on the grass verges but there is a minority that still do. Remember, we will soon be starting grass cutting and will need access at all times. Thank you!

CENTRAL BLETCHLEY PROSPECTUS & TOWNS FUND INITIATIVE

Following engagement with the local community and key stakeholders, Milton Keynes Council has recently published the Central Bletchley Prospectus which covers an area of approximately 30 hectares extending from Bletchley Railway Station to the town centre.

The Prospectus has a promotional purpose and identifies some of the 'once-in-a-generation' opportunities for renewal which will flow from delivery of the East-West Rail project and Bletchley's enhanced rail connectivity at the centre of the Government's flagship Oxford-Milton Keynes-Cambridge Arc. Some of these opportunities include:



- A new 'Eastern Entrance' to Bletchley railway station and more direct pedestrian-friendly links to the town centre;
- Reconnecting Queensway and the town centre to Buckingham Road; and,
- The development of Station Quarter - sites to the west of the West-Coast Mainline including the existing emergency service sites on Sherwood Drive.

The Prospectus can be viewed in full via the following link:

<https://www.milton-keynes.gov.uk/planning-and-building/growing-mk/central-bletchley-prospectus>

In further positive news, Milton Keynes Council has recently confirmed that Bletchley will be the focus of a Towns Fund bid which has the potential to secure government investment of up to £25 million for innovative renewal plans as part its 'levelling up the regions' programme.

A Town Deal Board is now being established to include local community and organisation representatives. The main responsibility of that Board will be to oversee production of an investment plan which identifies the local priorities for the area and which will then form a key part of the funding bid.

At a preliminary Town Deal meeting held on 30 January, and chaired by The Leader of Milton Keynes Council, diverse groups from across Bletchley, including West Bletchley Council, agreed to work together to produce an investment plan to create a place which is socially inclusive, environmentally sustainable and economically successful.

For further information regarding these initiatives,

please contact
Paul Hammond
at Milton Keynes Council,
on **01908 254367**.

Food

Stalls

Music

CALLING ALL SUPERHEROES

2020 WEST BLETCHLEY CARNIVAL

**JULY 11TH 2020
SATURDAY
12:00 TILL 17:00**

**MELROSE AVE
RICKLEY PARK**

**STALL/ PITCH & PARADE APPLICATION FORMS
AVAILABLE ON OUR WEBSITE.
WWW.WESTBLETCHLEYCOUNCIL.GOV.UK**

Drinks

Email-
carnival@westbletchleycouncil.gov.uk

Games

THE MARC AND FRANK MORAN CENTRE

ACTIVITIES AT THE CENTRE

The Christmas period is always a very busy time at the centre and this year was no exception. On Friday 6th November, we held our annual Christmas Light switch-on event at The Frank Moran Centre. Last year's switch-on event was very successful and this year's event proved to be even more of a success. First, children from Holne Chase Primary School got everyone in the festive spirit with a candlelit procession through Melrose Avenue, then they sang a selection of classic carols around the Christmas tree, accompanied by traditional brass band, The Ampthill Town Band. Holne Chase Parents and Teachers Association kindly provided refreshments on the night in the form of teas, coffees and mince pies, and we even had a visit from Santa himself.



Our annual Christmas at Melrose event was held on Saturday 7th December. This is run in partnership with Whaddon Way Church and St Mary's Church and, as always, this was an incredibly well-attended event with more than 200 children visiting Santa in the grotto. Elsewhere, more than 300 delicious portions of hog roast were served to adults and children alike in the Christmas marquee. Christmas at Melrose is a completely free event for residents of West Bletchley with a variety of activities to entertain everyone – no matter their age. Events included arts and crafts, face painting, flower arranging, as well as stalls, music, a Tudor Rose Goldwings gathering and an inflatable wall.

Our Christmas disco was held in the last week of term. Children enjoyed lots of festive dancing and games, and were also treated to a visit from Santa. Members of the Age UK Lunch Club got to meet Santa too, at their festive meal. However, perhaps more excitingly, was the surprise appearance of one Mr Elvis Presley – who entertained everyone with a rendition of his biggest hits.

Planning has already begun for lots more activities in 2020, with another visit from the Animal Encounters team, the annual Easter scavenger hunt, regular fish and chip quizzes and much more. See the Easter holiday poster for more details or drop by the centre to find out more.



THE MARC AND FRANK MORAN CENTRE

The MARC and Frank Moran Centre are open for all MK3 West Bletchley residents to access Monday to Friday 10am - 4pm.

Come along to the **Memory Club** by the Alzheimer's Society.

Next Session: 4th March, 1.30 – 3.30pm
and then fortnightly (Wednesdays) at The Frank Moran Centre
t: 01908 232162 e: miltonkeynes@alzheimers.org.uk



The MARC

Monday to Friday residents can join up to **UK Online** to learn computer skills. MK Community Bank information is available at The MARC, forms can be downloaded.

Weds MK Money Life Line are here for money advice | 10am – 12pm.

Thurs Family Arts and Crafts | 3.00pm – 4.30pm

Sat Meet your Councillors from 9am.

The FRANK MORAN CENTRE

Mon AGE UK Milton Keynes Information and Advice sessions | 10am-1pm
Franks 55+ drop in.
The MARC Crafters meet 1-4 pm. This is a craft session for adults.

Weds Food Bank | 10.30 – 11.30 am
Memory Club | (Fortnightly) 1.30 – 3.30pm

Thurs AGE UK Milton Keynes Information and Advice Session | 10am - 1pm
Franks 55+ drop-in | 10am-12.30pm

Fri AGE UK Milton Keynes Lunch Club | 10am – 1.30pm Transport is available, if needed. There is a criteria and cost for attending.
For more info. on how to join and costs involved call AGE UK MK: 01908 557873



We are a Food Bank collection point. Food Bank vouchers can be collected from The MARC during open hours.

Residents can collect dog waste bags and access free use of the internet on our PCs. You are always welcome to drop-in for tea or coffee, meet friends or make new ones! **Friendly staff** are on hand for support throughout the week, we can also help signpost to other organisations for further support and advice.



The MARC and Frank Moran Centre:

Melrose Avenue, MK3 6PB | 01908 370348.



WEST BLETCHLEY COUNCIL TAX REQUIREMENTS 2020/21

WHAT IS THE COUNCIL TAX REQUIREMENT?

Parish and Town Councils are funded principally from local council tax. In 2013, Central Government introduced the Local Council Tax Support Scheme which changed the way in which local council tax is calculated and passed on to parish councils. A proportion of parish council income now comes in the form of a central government grant, which has since 2013, reduced by 66% (from £111,236 in 2013 to £38,315 in 2020).

West Bletchley Council is intent on protecting and providing facilities and services for local people, taking over ownership and responsibility from Milton Keynes Council for these where necessary. To continue to meet this commitment West Bletchley Council has resolved, for 2020/21 to increase the Council Tax, paid by the average household, by 4.57%.

In 2020/21, each household will be asked to pay an average of £146.39 (per annum), as part of the Council Tax, to fund activities undertaken by West Bletchley Council.

HOW WILL WEST BLETCHLEY COUNCIL USE THE MONEY?

The Council has, in response to what residents have told us, determined a set of objectives for each of its committees to achieve over the coming year and each committee is allocated a budget for use in achieving these objectives.

Community Committee is tasked to:

- * Develop initiatives which support the social and economic development of West Bletchley.

For example, The MARC / Frank Moran Centre has continued to work in partnership with local agencies to extend the range of support services provided at the Centre.

- * Contribute towards initiatives which reduce crime and antisocial behaviour.

For example, as well as continuing to support the successful parish wide Neighbourhood Watch Schemes, we also support initiatives that seek to reduce dog fouling and litter which can be considered anti-social.

- * Consider any matters relating to the education, health and wellbeing of the community.

For example, the Council has allocated funds, in the coming year's budget, to continue the free swimming initiative for qualifying MK3 residents. We also work in partnership with both West Bletchley Wellbeing Counselling Service and YIS (Youth Counselling Service) to offer free counselling for MK3 residents.

- * Oversee the management of an annual programme of community events.

For example, we have continued to extend our annual programme to provide new events and initiatives including more holiday play sessions for local children.



Planning and Environment Committee is tasked to:

- * Determine the Council's view in respect of all planning applications relating to property and/or land within the parish, taking note of residents' views as appropriate.
- * Oversee development and publication of a Neighbourhood Plan. Our plan successfully passed referendum in 2019 and has now come into force as the statutory development plan for our parish.
- * Work in partnership with other Councils, agencies and groups to secure improvements in the physical environment. The Council are responsible for Landscape Maintenance within the parish. This enables us to continually enhance the quality of our local parks with regular maintenance and planting events.
- * Manage and maintain those outdoor leisure facilities in which the Council has a designated interest, including allotments, public gardens, parks and open space. We continue to work with local schools and their students who have taken part in environmental projects at several green spaces throughout the parish.
- * Manage and maintain approved levels of the Council's street furniture including litter and dog bins, seats and Ascot Rail.



Finance and General Purposes Committee is tasked to:

- * Oversee the management of the Council's finances.
- * Oversee the Council's Corporate Governance arrangements, risk management procedures and insurance arrangements.
- * Oversee all matters relating to the employment and management of the Council's staff.
- * Oversee the management of the Council's premises.

In addition to the above, the Council sets aside funds which will be used to undertake an approved Capital Programme, e.g. improvements to local parks and community facilities.

ESTIMATE OF NET EXPENDITURE FOR 2020/21

COMMITTEE

Community
Planning and Environment
Finance and General Purposes
Capital Programme

Total

BUDGET £

149,713
196,029
633,702
100,000
1,079,444

FUNDED BY

Amount required from Council Tax
Local Authority Grant Allocation
Reserves

Total

1,008,424
38,315
32,705
1,079,444

If you have any questions regarding the precept, please address these to:

The Clerk, West Bletchley Council. 221 Whaddon Way, Bletchley. MK3 7DZ

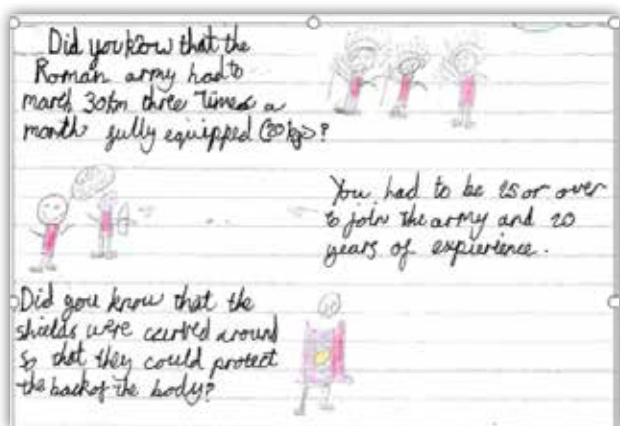
Tel. 01908 648257 e-mail clerk@westbletchleycouncil.gov.uk

ABBEYS

The half way point at Abbeys

As you read this, we will have reached the halfway point in the academic year; as always with some lovely events and learning experiences under our belts, and plenty more to look forward to. If you attended the Community Christmas Fair at the Frank Moran Centre, you may have spotted the Abbeys School Choir adding to the festivities and entertaining everyone within earshot with some great singing.

Meanwhile back in school, our oldest children in Years 5 and 6 enjoyed learning more about the fascinating history of HMS Titanic. This topic was enriched by a talk from a visiting expert, along with the children's individual research and model-making of the great ship itself. As well as the children, I learned some new facts about Titanic, such as the fourth funnel was just for show and didn't actually function. You learn something new at Abbeys every day, no matter how old you are!



Our Year 1 and 2 children have had an interesting trip to our local Bletchley Library, while Year 3 and 4 visited Bradwell Abbey to learn more about everyday life for the Romans. This included a fact-finding visit to the site of a Roman villa at Bancroft, which the children really enjoyed. The children also sampled Roman food and made mosaics during their topic, which even included some Maths challenges using Roman numerals!

For more information about life at Abbeys, please visit our website, www.abbeysprimary.org
MRS SOPHIE GOOD, HEADTEACHER

LORD GREY ACADEMY

Hamper Campaign 2019

A very big thank you to every member of staff @ Lord Grey Academy who supported and contributed



to the hamper campaign. Your generosity is so much appreciated. We successfully packed 38 hampers that were delivered to families in time for Christmas.



Christmas Concert 2019

We all got that festive feeling listening to the carol concert. Students performed a range of music, drama and dance pieces at the Christmas Concert.

One hundred children from Rickley Park Primary School and Abbeys Primary School joined us to celebrate the festive season, which showcased lots of Lord Grey talent. Our students then went on to impress their parents and friends with a second performance in the evening.

The Drama Club performed a piece at the concert and it was based on the theme, 'Homelessness at Christmas'.

Inspired by this, the students involved decided that they would like to raise money for the charity, Crisis. After a fantastic evening with a very enthusiastic audience, £169.89 was raised in donations. This amount was enough to pay for six homeless people to have a warm bed, and Christmas lunch at a Crisis Shelter.

LGA is making a difference! A huge thanks to all who donated, and a massive well done to Sorcha, Olivia, Hannah, Lucy, Baylee and Princess for creating and performing such a fantastic, hard-hitting performance.

Community Speed Watch

Our students who are studying the Level 2 Public Services course have been working with community speed watch. They looked at how the scheme works and how to record details of passing cars and if they were within the 20mph zone outside the academy.



EASTER ACTIVITIES

Stick on
the fridge

Reminder:
Put these dates in
my diary

@ THE MARC

Activities
are for MK3
residents

Easter Disco

Friday 3rd April | 5pm-7pm

3-12yr olds (U6s must be accompanied). Snacks & Squash provided.



Easter Bonnet Making & Parade

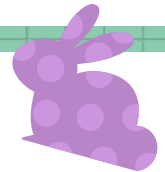
Tuesday 7th April | 1230pm-3pm

Join us for Easter bonnet making (all materials supplied). We will then have an Easter bonnet parade at 3pm where the best bonnets will win a prize.

Easter Egg Hunt

Thursday 9th April | 10am-3.30pm

Easter egg hunt in and around Melrose shops. Pop into the MARC to collect your clues and prizes.



Animal Encounters @ The FMC

Tuesday 14th April | 10am and 1230pm

Come and meet a selection of animals including skunks, owls, snakes and many more. This is a free event but we have a limited number of spaces on each session so please call the centre to book your space - 01908 370348.



May Half-Term Activities

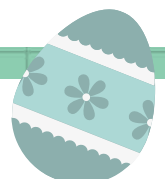
Friday 22nd May | 5pm-7pm May half-term disco

Please keep an eye on the FMC Facebook page to see what other activities



we have planned for May half-term.

www.facebook.com/wbcandfmc



All our sessions are free! There is no need to book (except for animal encounters) just turn up on the day.

For more info on any of these activities please contact The Frank Moran Centre

01908 370348 Frank Moran Centre | Melrose Avenue | MK3 6PA





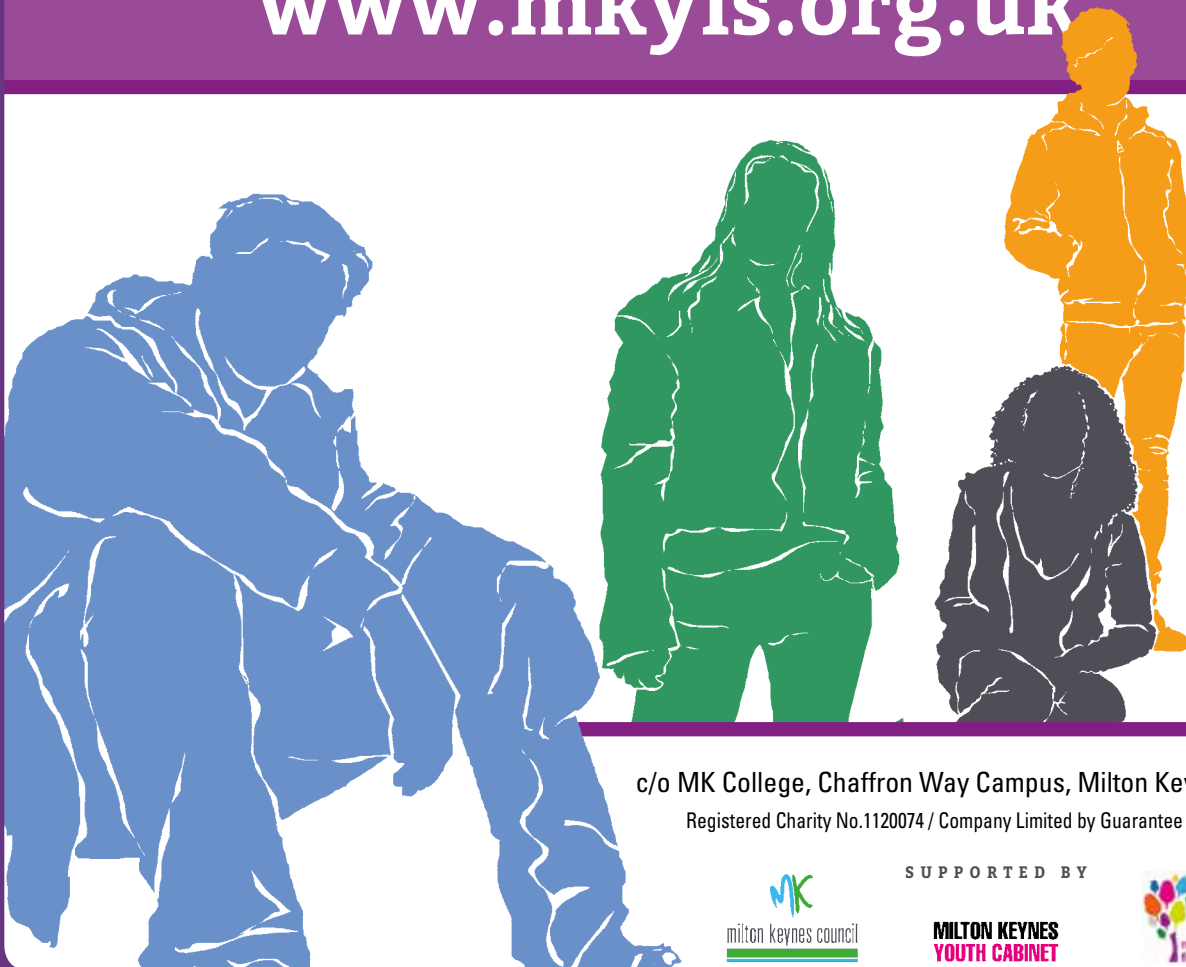
youth counselling service

Affordable and confidential counselling for
young people aged 11-21 who live, learn or work
in Milton Keynes & Bletchley

01908 604 700

info@mkyis.org.uk

www.mkyis.org.uk



bacp Accredited Service

c/o MK College, Chaffron Way Campus, Milton Keynes MK6 5LP

Registered Charity No.1120074 / Company Limited by Guarantee No. 06180098

SUPPORTED BY



**MILTON KEYNES
YOUTH CABINET**



COMMUNITY SPACE FOR HIRE

at Bletchley Library

Westfield Road, Bletchley, Milton Keynes MK2 2RA



Hourly rates with discounts for block bookings

Enquiries or bookings
phone 01908 254204 or email
libraryroombookings@milton-keynes.gov.uk

More information online at
www.milton-keynes.gov.uk/libraryroomhire

Milton Keynes Libraries

(Term time only)

CHILDREN'S HOUR

at BLETCHLEY LIBRARY

THURSDAY

10-11am

Westfield Road MK2 2RA

Only £2 per child

Join us for staff led stories and songs, crafts and fun educational toys

The library is closed to the public until 11am and available exclusively for families attending Children's Hour

www.milton-keynes.gov.uk/libraries

Milton Keynes Libraries

Milton Keynes Council

Save the Date & Join the UK's Biggest Ever Clean-Up!



Last year, 560,000 #LitterHeroes joined forces to collect litter at more than 17,000 events across the UK, taking a national stand against litter.

This year the event is running again between 20th March and 13th April.
It would be fantastic if some of this year's input came from West Bletchley!

If you would like to take part with this year's Spring Clean you can litter pick where you live
Or

If you would like to take part in an organised Spring Clean just turn up
at the locations and times below in the following areas:

Mon 6th April 10.30-11.30: Rickley Park (meet at carpark, off Shenley Rd)

Tue 7th April 10.30-11.30: Chepstow Park (meet end of Blaydon Close)

We have a number of litter pickers, gloves, Hi-Vis vests and bags you can borrow.

<https://www.keepbritaintidy.org/get-involved/support-our-campaigns/great-british-spring-clean>.

OCTOBER COMPETITION WINNERS

Crossword

The answers to the October Crossword were:-

Across: 7 Switzerland, 8 Rage, 9 Lintel, 11 Mafia, 12 Atlas, 13 Unites, 14 Leaf, 17 Significant.

Down: 1 Tsar, 2 King of Kings, 3 Uzi, 4 Artisan, 5 Bastille Day, 6 Adults, 10 Harelip, 11 Mousse, 15 Fate, 16 Rig.

The winners of the October Crossword were Sue McCarthy and Scott Maynard who both win a £15 gift card.

Colouring Competition

Again the standard of entries to the colouring competition was excellent. **The winners of the October Colouring Competition were (1st prize) Tanaka Nyambo who wins a £10 gift card and (2nd prize) Stephen Flanagan who wins a £5 gift card.**



Have you ever thought of playing lawn bowls and would like to give it a try?

Come along to our

Open Day

Saturday 2nd May

1pm to 4pm

We will have qualified coaches available to help and all equipment is supplied (it will help if you wear trainers or flat soled shoes)

All ages and abilities welcome



Scots Bowls Club
Selbourne Avenue
Bletchley
Milton Keynes
Bucks
MK3 5BX



ST MARTINS BOWLS CLUB

The second-best kept secret in Bletchley?

St Martins Bowls Club has been tucked away in the corner of Rickley Park since 1972, but has been in existence since 1920, when it was situated behind St Martins Hall in Bletchley.

At St Martins we have some of the best lawn bowls facilities within the county and a green that is the envy of many bowls' clubs. A terrific club house, with its own bar and kitchen, provides an active social scene throughout the year.

For players that are new to the sport, or for those that have maybe not played for a while, St Martins have a dedicated team who are eager and willing to coach or provide some refresher training.

We have quite a full diary of bowling where we participate in county, national and our own in-house competitions, as well friendly matches at the weekends, so there really is plenty of action on offer.

In 2020 St Martins Bowls Club celebrates its centenary year and there are a number of events planned to mark this magnificent milestone.



One of these is our open day on Monday 25th May from 12:30 onwards.

Here you will be able to try your hand at lawn bowls, assisted by our team of coaches. St Martins members will be on hand to answer any questions you may have and of course there will be a variety of refreshments available.

So if you're looking for something new, or want to take up a social sport that is easy on the joints, but can be as competitive as you want to make it, come and give us a try, you may be pleasantly surprised.

More details on our website:
www.bletchleystmartinsbowlsclub.co.uk

COLOUR IN OUR MARCH PICTURE TO WIN A GIFT CARD
1ST PRIZE = £10, 2ND PRIZE = £5



This competition is open to all children under the age of 10 living in West Bletchley. To enter just colour in the picture, fill in the entry form then cut it out and send it to us at West Bletchley Council, 221 Whaddon Way, Bletchley, Milton Keynes, MK3 7DZ. The closing date for entries is **9th April 2020**. *(Winners names will be published in the next edition)*

Name

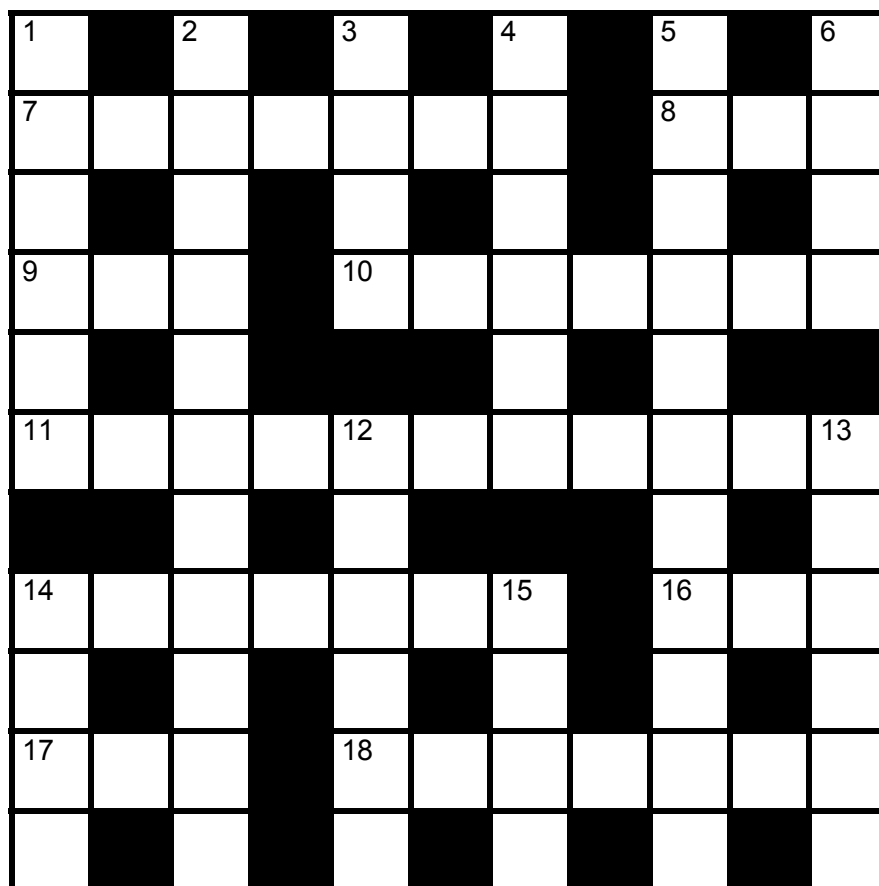
Address.....

.....

..... Post Code

Telephone

COMPLETE OUR **MARCH** CROSSWORD TO WIN A £15 GIFT CARD



ACROSS

- 7** Letter (7)
- 8** Finish first (3)
- 9** Viper (3)
- 10** Adage (7)
- 11** Stylist (11)
- 14** Went in (7)
- 16** Curve (3)
- 17** Late in the day (poet.) (3)
- 18** Move down (7)

DOWN

- 1** Make over (6)
- 2** E.g. the Mona Lisa (3,8)
- 3** Pace (4)
- 4** Far distant (6)
- 5** Lottery (11)
- 6** Rebuff (4)
- 12** Mock (6)
- 13** Withdraw (6)
- 14** Peepers (4)
- 15** Prescribed amount (4)

This competition is open to all residents of West Bletchley. When you have completed the crossword, fill in the entry form then cut it out and send it to us at West Bletchley Council, 221 Whaddon Way, Bletchley, Milton Keynes MK3 7DZ. All correct entries will be put into a hat and winners drawn out. The closing date for entries is **9th April 2020**. *(Winners names will be published in the next edition)*

Name

Address.....

.....

..... Post Code

Telephone

MEN IN SHEDS WEST BLETCHLEY

During the winter months, it is often a quiet time. Not so down at the Shed, as we have been busy making items for sale at our pre-Christmas pitch at the Tesco Extra store and at the Christmas@Melrose event. In addition, the Shed also took part in a National Mental Health Awareness project which brings together art and music to explore the positive benefits that these can have on mild to medium mental health sufferers; the Shed's contribution was to construct a chair from scratch. Up to 20 individual Sheds from across the country took part and each used their artistic interpretation to produce something different and ours was no different as each chair leg had a different pattern being turned on the lathe. At the time of writing, we are making kit bird boxes so that local primary school children can enjoy making them up and watching for signs of nesting activity.

Nationally mental health has always been at the forefront of Shed consciousness as at least 50 per cent of us will suffer mental illness in some form during our lifetime.

Mental Health conditions take many forms but a route to getting better is to talk about it. Sheds provide a safe environment in which a conversation can take place in a non-threatening way and Men in Sheds West Bletchley is working with local GP surgeries to help integrate those with mild mental health conditions by providing a space which helps improve overall health and reduce dependency on prescribed drugs.

Paul Egerton - Shed Secretary

Mobile no. **07798 915221**
email. **men.in.sheds.west.bletchley@gmail.com**

WORKTREE

When I joined Worktree I thought it was my role to inspire teenagers, I was wrong! Every school I go into those teenagers INSPIRE me. So said David Ashford – West Bletchley Councillor.

Recently in Lord Grey School David commented on the motivational quotes over doorways. Great positive messages, he said, helping teenagers to succeed.

So what is Worktree?

It is an opportunity for adults to share their work life and experience helping teenagers make their life and career choices. You simply sit in a circle with a group of 3-4 students in front of you, and answer their questions about your experiences of working life. After six minutes, that group moves to the next volunteer guest, and you get another group. It's simple and rewarding for both

you and the students, helping them work out what different working lives are like and how to communicate well with unfamiliar adults.

Last year 934 volunteers from 330 local businesses and individuals took part in 176 sessions in 15 schools including West Bletchley's Lord Grey.



Tom Bulman Worktree Director, right,
with Worktree Volunteer
West Bletchley Councillor, David Ashford

If you would like to volunteer for a session – no preparation or qualifications required - simply click **www.worktree.org/events** and choose a convenient date in a school near you. There are many to choose from!

Noticeboard

CHEPSTOW DRIVE MEETING PLACE

Chepstow Drive

Hiring for small parties, wedding
receptions, meetings, etc
Prices on demand

Contact Ted Andrews on:
07540604130



Future Meetings

West Bletchley Council is a very busy organisation. It holds committee meetings and all councillors meet together bi-monthly.

All meetings of the council are open to the public. We welcome residents coming along and try and involve residents where legally able and practically possible to do so.

*Committee meetings are held at
221 Whaddon Way, Bletchley.*

*Meetings usually start at 7.30 pm except for the
Planning & Environment Committee
which starts at 7 pm.*

Committee Meeting dates from March 2020

Monday 9th March - Planning & Environment

Monday 16th March - Community

Monday 23rd March - Parking Sub

Monday 6th April - Finance & General Purposes (8pm)

Monday 20th April - Planning & Environment

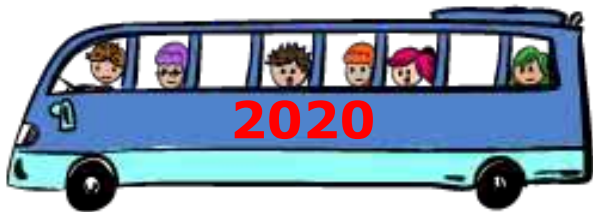
Tuesday 28th April - Full Council

Tuesday 19th May - Annual Parish Meeting/AGM

Monday 1st June - Parking Sub Committee

Monday 8th June - Finance & General Purposed

June 2020 (date to be confirmed) - Community



WEST BLETCHLEY COMMUNITY CENTRE COACH TRIPS

11th MAY to NATIONAL ARBORETUM

15th JUNE to PORTSMOUTH

13th JULY to SOUTHEND

10th AUGUST to CROMER

7th SEPTEMBER to HASTINGS

ALL TRIPS COST £23

Leave Catholic Church car park at 8.15am
DEPOSIT AND BOOKING FORM FROM OFFICE AT
3 PORCHESTER CLOSE, MK3 6BH. 01908 374122
Office open Monday to Thursday mornings only.

West Bletchley Council Statement

*West Bletchley Council's acceptance of any
advertisement with the Open Door newsletter
shall under no circumstances be considered an
endorsement of the products and/or services
advertised.*

Noticeboard

OPEN HOURS

West Bletchley Council

Office opening hours:

Monday to Friday 9.30 am to 4 pm

E-mail: Clerk@westbletchleycouncil.gov.uk

Main Office, The Clerk, 221 Whaddon Way
Bletchley, Milton Keynes MK3 7DZ

Telephone: 01908 648257

www.westbletchleycouncil.gov.uk

MP'S SURGERY



MP's Surgery

Our local MP, Iain Stewart would like to hear from you.

He holds regular surgeries by appointment across the constituency
To book a surgery appointment:

Please call: 01908 686830

Please email:

iain.stewart.mp@parliament.uk

Please write to: Suite 102
Milton Keynes Business Centre
Foxhunter Drive
Linford Wood
MK14 6GD

MILTON KEYNES COUNCILLORS

Councillors Legg, Townsend & Long Bletchley West Ward



We will be holding an advice surgery every Saturday from 9am at
The Frank Moran Centre,
Melrose Avenue, Bletchley

Councillor Wales Bletchley Park Ward



will be holding an advice surgery 1st Thursday of each month from 6pm at the West Bletchley Community Centre, Whaddon Way Shops.

Also Saturday mornings at Bletchley Library, Westfield Road, by appointment only, please email:-

elaine.wales@milton-keynes.gov.uk.

Councillors Rankine & Nazir Bletchley Park Ward



will be holding an advice surgery on the 3rd Saturday of each month from 10am at Bletchley Library, Westfield Rd, Bletchley, Milton Keynes MK2 2RA

WEST BLETCHLEY COUNCILLORS

If you need help you can contact any one of the councillors listed below or you can contact the West Bletchley Council Office

Castles Ward



Gladstone McKenzie
01908 648915

cllr.gladstone.mckenzie@westbletchleycouncil.gov.uk

Finance & General Purposes
Planning & Environment



Chris Dachtler

cllr.chris.dachtler@westbletchleycouncil.gov.uk

Community



Sue Long
01908 376141

cllr.sue.long@westbletchleycouncil.gov.uk

Community



Derek Hircock

cllr.derek.hircock@westbletchleycouncil.gov.uk

Planning & Environment



Matthew Burn

contact through office

cllr.matthew.burn@westbletchleycouncil.gov.uk

Community
Finance & General Purposes
Planning & Environment



David Ashford

cllr.david.ashford@westbletchleycouncil.gov.uk

Community
Planning & Environment

Abbeys Ward



David Gibb
07895 064862

cllr.david.gibb@westbletchleycouncil.gov.uk

Finance & General Purposes
Planning & Environment



Geraldine Helder

contact through office

cllr.geraldine.helder@westbletchleycouncil.gov.uk

Planning & Environment



Kit Power
07747 098767

cllr.kit.power@westbletchleycouncil.gov.uk

Community



Pete Lindop
07803 083720

cllr.pete.lindop@westbletchleycouncil.gov.uk

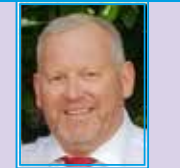
Community
Finance & General Purposes
Parking Sub



Ian Revell

cllr.ian.revell@westbletchleycouncil.gov.uk

Finance & General Purposes
Parking Sub



Paul Moore

contact through office

cllr.paul.moore@westbletchleycouncil.gov.uk

Community
Finance & General Purposes
Parking Sub

Scots Ward



Barbara Moore
07872 624412

cllr.barbara.moore@westbletchleycouncil.gov.uk

Finance & General Purposes



Felicity Cockbaine

cllr.felicity.cockbaine@westbletchleycouncil.gov.uk

Community
Finance & General Purposes



Iain Layden

cllr.iain.layden@westbletchleycouncil.gov.uk

Community

Church Green Ward



Nabeel Nazir

contact through office

cllr.nabeel.nazir@westbletchleycouncil.gov.uk

Community
Finance & General Purposes



Jim Kearon

cllr.jim.kearon@westbletchleycouncil.gov.uk

Finance & General Purposes
Planning & Environment



Sajna Rahman

contact through office

cllr.sajna.rahman@westbletchleycouncil.gov.uk

Counties Ward



Paul Harvey

contact through office

cllr.paul.harvey@westbletchleycouncil.gov.uk

Planning & Environment



Mick Legg
07920 103239

cllr.michael.legg@westbletchleycouncil.gov.uk

Parking Sub
Planning & Environment



Nigel Long
01908 376141

cllr.nigel.long@westbletchleycouncil.gov.uk

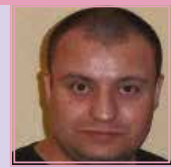
Finance & General Purposes



Elaine Wales

cllr.elaine.wales@westbletchleycouncil.gov.uk

Finance & General Purposes
Parking Sub



James Butson

contact through office

cllr.james.butson@westbletchleycouncil.gov.uk

Parking Sub
Planning & Environment

Rivers Ward



Veronica Belcher
01908 371802

cllr.veronica.belcher@westbletchleycouncil.gov.uk

Chair of Council



Naomi Sinclair

contact through office

cllr.naomi.sinclair@westbletchleycouncil.gov.uk

Community
Planning & Environment



Shery Delfani
07979 794010

cllr.shery.delfani@westbletchleycouncil.gov.uk

Community
Finance & General Purposes
Parking Sub
Planning & Environment



Sally Crockett

cllr.sally.crockett@westbletchleycouncil.gov.uk

Parking Sub
Planning & Environment



Ernie Thomas
01908 379748

cllr.ernie.thomas@westbletchleycouncil.gov.uk

Vice Chair of Council

Fairways Ward

Poets Ward

Racecourses Ward

Saints Ward