

PRISM CHARTBOOK GBP, USD & EUR

February 2020

Create tomorrow.
Start today.

Platform | Investment | Treasury



Contents

■ Strategy Overview	3
■ Master Investment Strategy	4
■ Investment Commentary	5
■ Horizon 1	6
■ Horizon 1+	7
■ Horizon 2	8
■ Horizon 2+	9
■ Horizon 3	10
■ Horizon 3+	11
■ Horizon 4	12
■ Horizon 5	13
■ Horizon 6	14
■ Horizon 8	15
■ Horizon 10	16
■ Enhanced Growth	17

Master Investment Strategy

February 2020

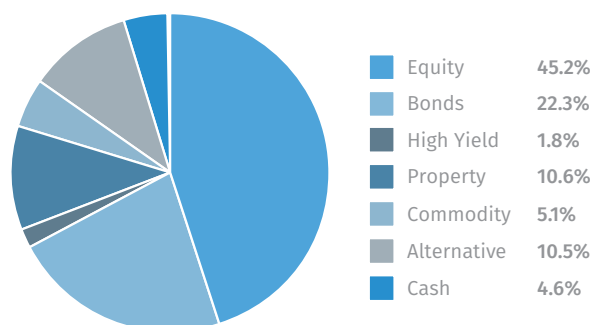
Strategy Overview

The Master Investment Strategy pursues a strategy of maximum diversification, investing across a wide range of asset classes including equities, bonds, property and alternatives, in order to maximise returns per unit of risk.

It is not necessary for the strategy to target aggressive returns, but to achieve an 'optimal' balance between risk and return.

The underlying assets of the Master Investment Strategy are carefully selected to create a highly diversified portfolio largely consisting of individual securities, although investment trusts, exchange traded funds, actively managed funds and other investments may also be used.

Master strategy allocations



PRISM Strategy Overview

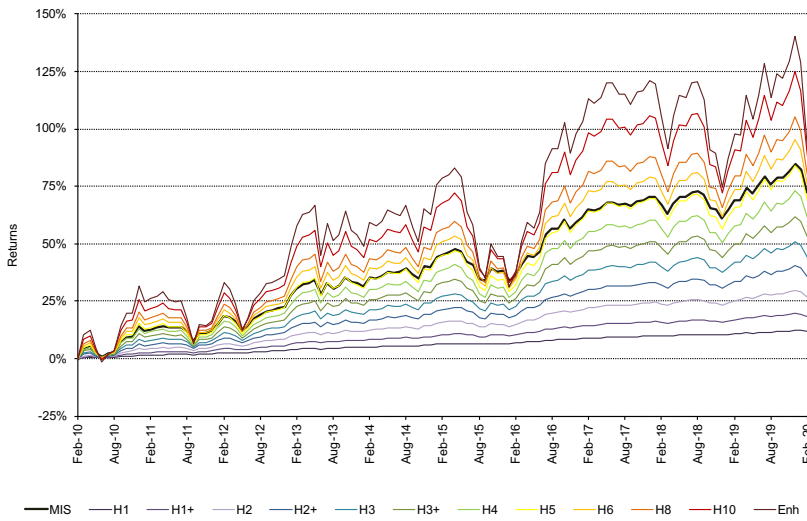
PRISM offers a full spectrum of defined risk-return profiles, with performance driven from a single 'optimal' investment strategy. This Master Investment Strategy is a highly diversified investment portfolio that aims to optimise returns per unit of risk.

Each PRISM profile has a defined mean return and a defined volatility which, together with the performance of the Master Investment

Strategy, are used to calculate returns in each period. These defined risk-return profiles are published in advance, providing investors and their advisors clarity as to the expected performance characteristics of their investment. Some profiles enjoy an element of capital protection over their stated investment time horizon, giving greater peace of mind to investors with less risk appetite.

Master Investment Strategy

GBP Performance



Defined risk-return profile

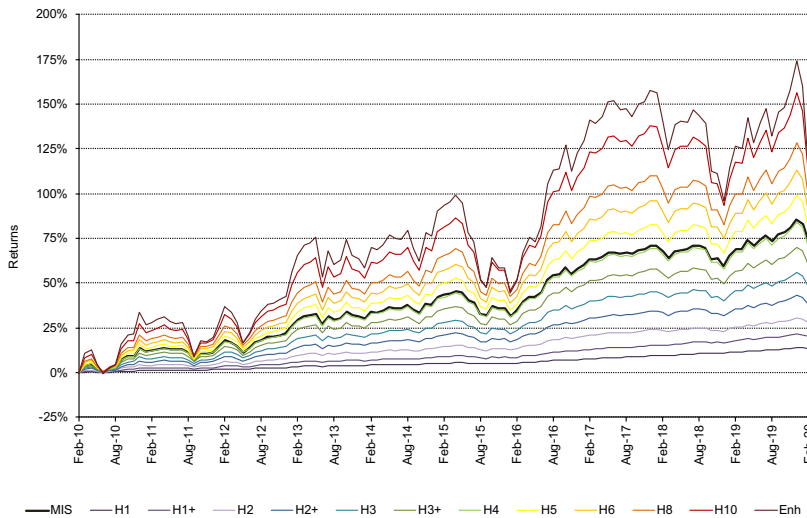
Expected Mean Return: **6.75%**
 Expected Volatility: **6.50%**
 Investment Time Horizon: **5 years**

Capital Protections

Over Full Time Horizon: **None**

	Returns	Volatility
3 months	-4.81%	-
6 months	-1.77%	-
1 year	2.18%	8.42%
3 years	4.68%	6.52%
5 years	18.77%	7.16%
10 years	72.58%	7.09%
Annualised	5.61%	7.16%

USD Performance



Defined risk-return profile

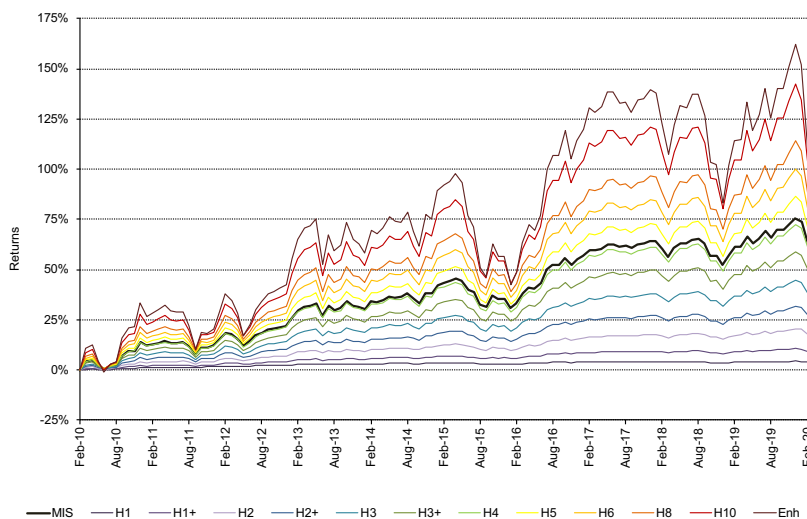
Expected Mean Return: **7.25%**
 Expected Volatility: **6.50%**
 Investment Time Horizon: **5 years**

Capital Protections

Over Full Time Horizon: **None**

	Returns	Volatility
3 months	-4.58%	-
6 months	-0.26%	-
1 year	2.24%	8.63%
3 years	5.66%	6.61%
5 years	20.42%	7.23%
10 years	72.79%	7.12%
Annualised	5.62%	7.48%

EUR Performance



Defined risk-return profile

Expected Mean Return: **6.00%**
 Expected Volatility: **6.50%**
 Investment Time Horizon: **5 years**

Capital Protections

Over Full Time Horizon: **None**

	Returns	Volatility
3 months	-5.19%	-
6 months	-1.15%	-
1 year	1.64%	8.74%
3 years	2.49%	6.93%
5 years	14.26%	7.38%
10 years	63.74%	7.21%
Annualised	5.05%	7.50%

Investment Commentary

In the first two weeks of February, markets shrugged off concerns regarding the initial COVID-19 outbreak in China and were supported by better than expected US Q4 quarter earnings. However, a spate of outbreaks in Korea, Iran, Italy and the US raised concerns that the global economy may experience further shutdowns in travel and production, similar to those seen in the Hubei province.

It is now clear that there had been a lack of testing outside of hotspot countries and that the virus had spread further than was previously understood. Partnered by a continuing decline in oil prices, a key gauge for economic output, which year to date has fallen by over 25%, these developments led to a sharp correction in equity markets in the final week of February. The sell-off marked the fastest ever 10% decline from an all-time high in the S&P 500's history.

The Strategy returned -5.09% in sterling terms in February, with losses pared by Fixed income, precious metals, infrastructure and absolute return funds. Despite the broad nature of the sell-off, a number of equities experienced gains over the month; Deere & Co, Deutsche Telekom, E.ON, Schneider Electric and Fresenius Medical Care.

We took the view on the 28th February that markets had overreacted, moving too far too fast and added to equity positions with a number of quality blue chip companies trading on attractive valuations. While significant downside risks cannot be ignored, they are likely to be contained to

an extent by the central bank 'put'. The Federal Reserve has cut rates by 50bps and central banks have confirmed they will take whatever action necessary to support the financial system. We may potentially see further quantitative easing over the coming weeks which could provide support to markets.

Over the longer term we believe that the measures designed to control COVID-19 and the degree of public anxiety (cancelled holidays, closed businesses and supply disruption) are likely to have a far greater impact on economic activity than the virus itself. Ordinary flu claims an average of 300,000-600,000 lives a year globally, and for most COVID-19 is a relatively mild form of flu, with a mortality rate currently estimated in the region of 1-3%.

We expect the current period of uncertainty may extend for some time; however, it is possible that by April, we may see the outbreaks begin to decline as control measures and public awareness stem the infection rate and Spring weather in the Northern hemisphere naturally slows the spread of the virus.

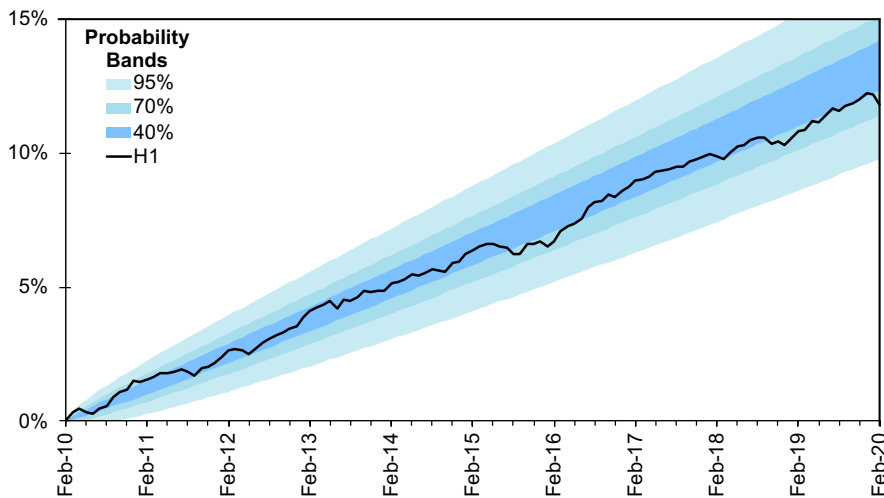
One remarkable feature of this outbreak has been the extraordinary speed with which a vaccine has been designed, developed and is ready to move into human trials. It is possible that an effective vaccine could be in production by the summer and with sufficient time to build up supplies ahead of the next winter flu season.

We are monitoring developments continuously and will take such actions as we feel necessary to either protect investment portfolios or to take advantage of short term market weakness to build positions.

Horizon 1 Strategy

Create tomorrow.
Start today.

GBP Performance



Defined risk-return profile

Defined Mean Return: **1.25%**

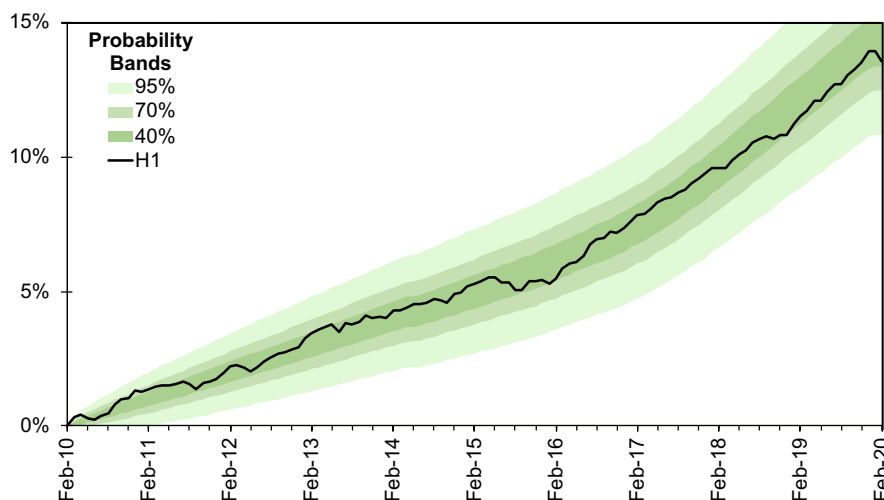
Defined Volatility: **0.50%**

Capital Protections

Over Full Time Horizon: **100%**

	Returns	Volatility
3 months	-0.19%	-
6 months	0.23%	-
1 year	0.89%	0.64%
3 years	2.61%	0.48%
5 years	5.10%	0.50%
10 years	11.79%	0.48%
Annualised	1.12%	0.49%

USD Performance



Defined risk-return profile

Defined Mean Return: **2.00%**

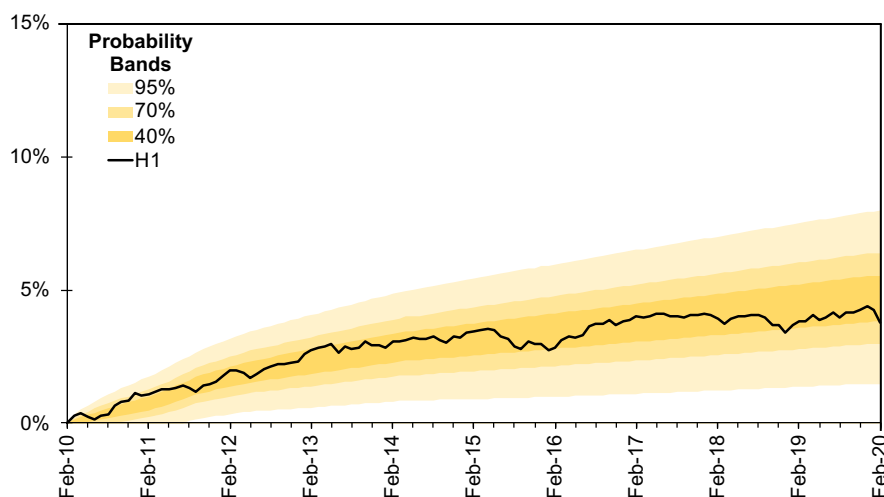
Defined Volatility: **0.50%**

Capital Protections

Over Full Time Horizon: **100%**

	Returns	Volatility
3 months	0.03%	-
6 months	0.77%	-
1 year	1.81%	0.69%
3 years	5.33%	0.50%
5 years	7.84%	0.53%
10 years	13.55%	0.50%
Annualised	1.28%	0.67%

EUR Performance



Defined risk-return profile

Defined Mean Return: **0.30%**

Defined Volatility: **0.50%**

Capital Protections

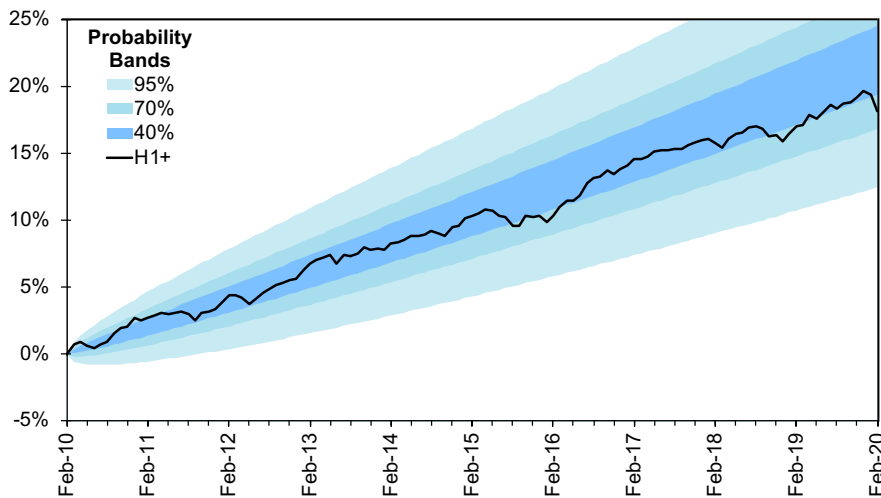
Over Full Time Horizon: **99%**

	Returns	Volatility
3 months	-0.44%	-
6 months	-0.17%	-
1 year	-0.03%	0.65%
3 years	-0.20%	0.50%
5 years	0.32%	0.52%
10 years	3.79%	0.49%
Annualised	0.37%	0.55%

Horizon 1+ Strategy

Create tomorrow.
Start today.

GBP Performance



Defined risk-return profile

Defined Mean Return: **2.00%**

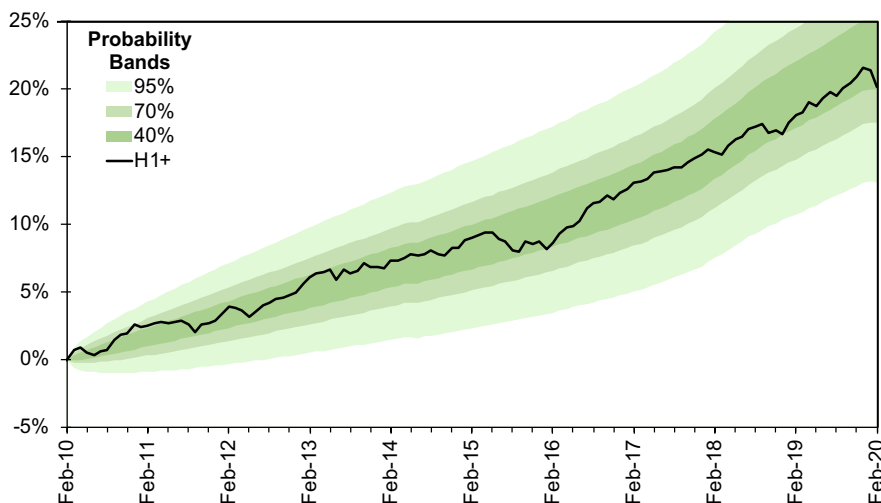
Defined Volatility: **1.30%**

Capital Protections

Over Full Time Horizon: **100%**

	Returns	Volatility
3 months	-0.83%	-
6 months	-0.09%	-
1 year	1.01%	1.59%
3 years	3.20%	1.16%
5 years	7.13%	1.17%
10 years	18.21%	1.09%
Annualised	1.69%	1.09%

USD Performance



Defined risk-return profile

Defined Mean Return: **2.75%**

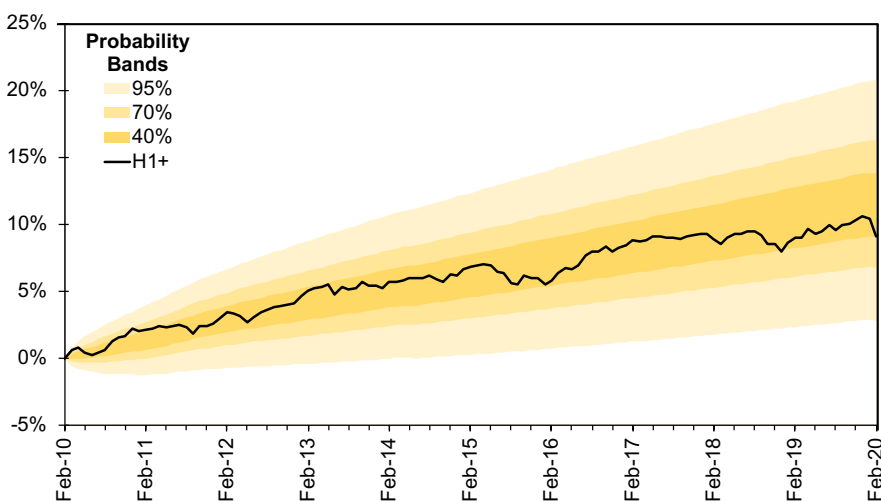
Defined Volatility: **1.30%**

Capital Protections

Over Full Time Horizon: **100%**

	Returns	Volatility
3 months	-0.62%	-
6 months	0.53%	-
1 year	1.77%	1.65%
3 years	6.24%	1.20%
5 years	10.18%	1.25%
10 years	20.14%	1.16%
Annualised	1.85%	1.28%

EUR Performance



Defined risk-return profile

Defined Mean Return: **1.00%**

Defined Volatility: **1.30%**

Capital Protections

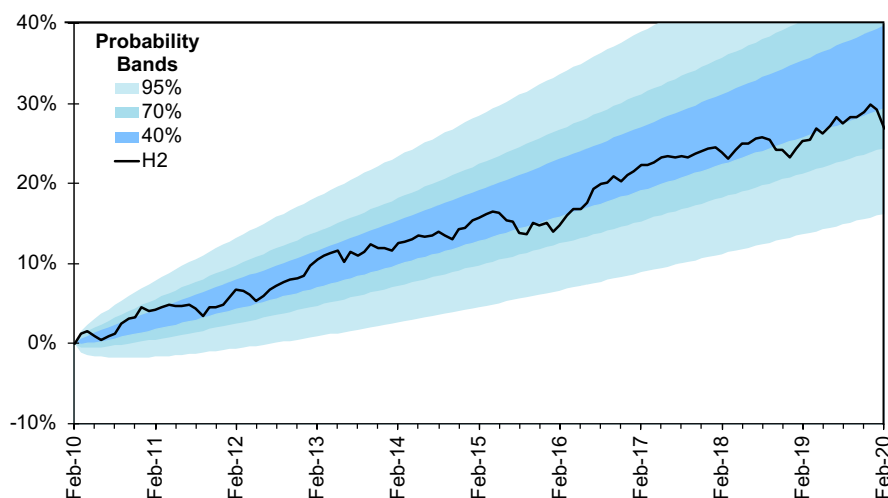
Over Full Time Horizon: **98%**

	Returns	Volatility
3 months	-1.11%	-
6 months	-0.40%	-
1 year	0.07%	1.64%
3 years	0.28%	1.23%
5 years	2.13%	1.22%
10 years	9.10%	1.12%
Annualised	0.87%	1.13%

Horizon 2 Strategy

Create tomorrow.
Start today.

GBP Performance



Defined risk-return profile

Defined Mean Return: **3.00%**

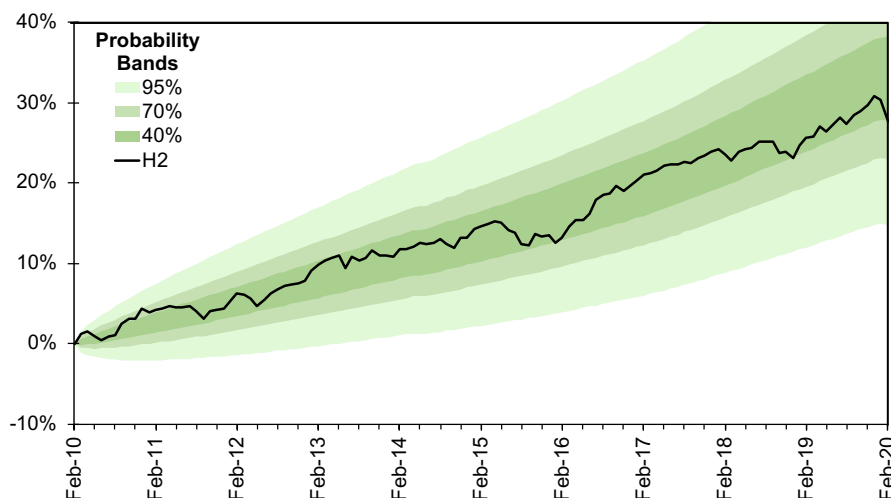
Defined Volatility: **2.35%**

Capital Protections

Over Full Time Horizon: **99%**

	Returns	Volatility
3 months	-1.65%	-
6 months	-0.47%	-
1 year	1.19%	2.87%
3 years	3.75%	2.12%
5 years	9.57%	2.19%
10 years	26.87%	2.06%
Annualised	2.41%	2.02%

USD Performance



Defined risk-return profile

Defined Mean Return: **3.70%**

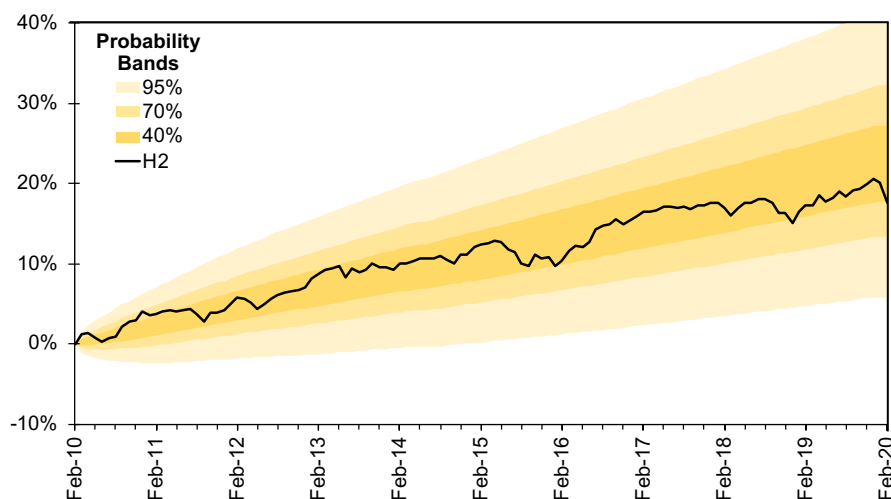
Defined Volatility: **2.35%**

Capital Protections

Over Full Time Horizon: **99%**

	Returns	Volatility
3 months	-1.46%	-
6 months	0.25%	-
1 year	1.72%	2.96%
3 years	5.50%	2.17%
5 years	11.42%	2.26%
10 years	27.75%	2.14%
Annualised	2.48%	2.25%

EUR Performance



Defined risk-return profile

Defined Mean Return: **2.00%**

Defined Volatility: **2.35%**

Capital Protections

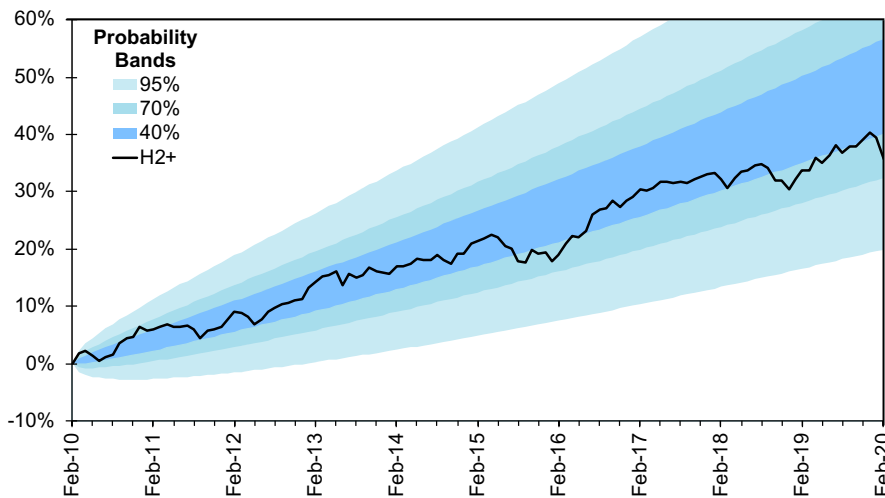
Over Full Time Horizon: **97%**

	Returns	Volatility
3 months	-1.95%	-
6 months	-0.63%	-
1 year	0.31%	2.98%
3 years	0.94%	2.25%
5 years	4.67%	2.26%
10 years	17.62%	2.10%
Annualised	1.64%	2.13%

Horizon 2+ Strategy

Create tomorrow.
Start today.

GBP Performance



Defined risk-return profile

Defined Mean Return: **4.00%**

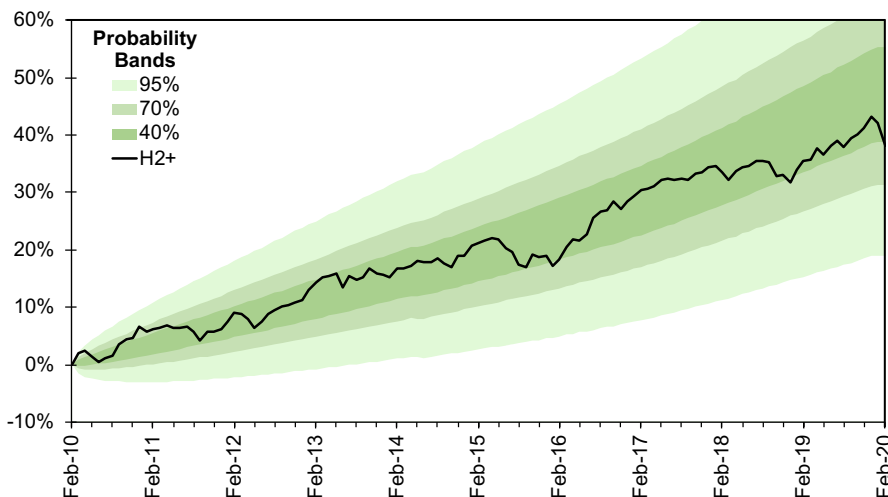
Defined Volatility: **3.40%**

Capital Protections

Over Full Time Horizon: **97%**

	Returns	Volatility
3 months	-2.44%	-
6 months	-0.79%	-
1 year	1.45%	4.26%
3 years	4.06%	3.21%
5 years	11.70%	3.34%
10 years	35.60%	3.16%
Annualised	3.09%	3.18%

USD Performance



Defined risk-return profile

Defined Mean Return: **4.70%**

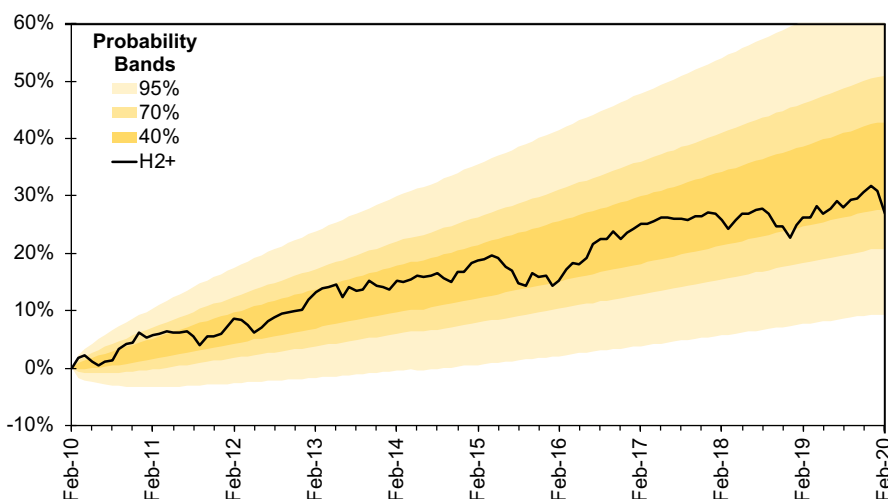
Defined Volatility: **3.40%**

Capital Protections

Over Full Time Horizon: **97%**

	Returns	Volatility
3 months	-2.23%	-
6 months	0.16%	-
1 year	1.91%	4.38%
3 years	5.83%	3.27%
5 years	14.02%	3.45%
10 years	38.10%	3.28%
Annualised	3.28%	3.43%

EUR Performance



Defined risk-return profile

Defined Mean Return: **3.00%**

Defined Volatility: **3.40%**

Capital Protections

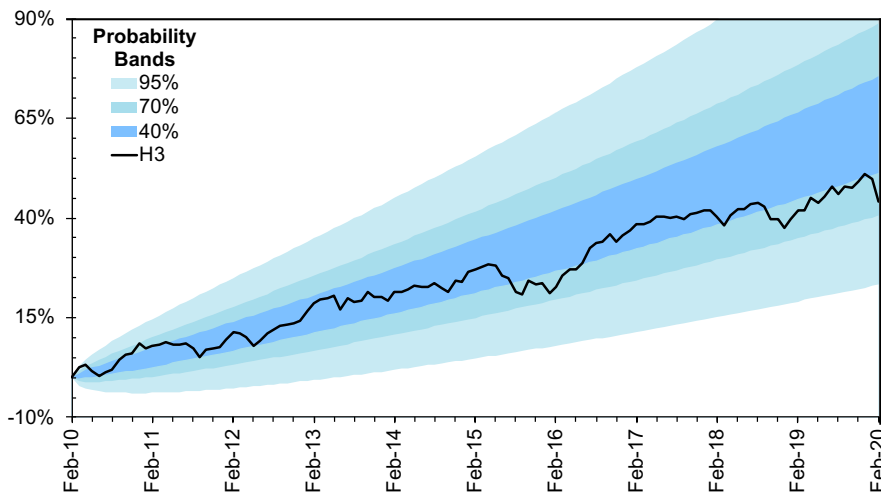
Over Full Time Horizon: **95%**

	Returns	Volatility
3 months	-2.77%	-
6 months	-0.77%	-
1 year	0.62%	4.42%
3 years	1.38%	3.41%
5 years	6.95%	3.45%
10 years	26.95%	3.23%
Annualised	2.42%	3.28%

Horizon 3 Strategy

Create tomorrow.
Start today.

GBP Performance



Defined risk-return profile

Defined Mean Return: **5.00%**

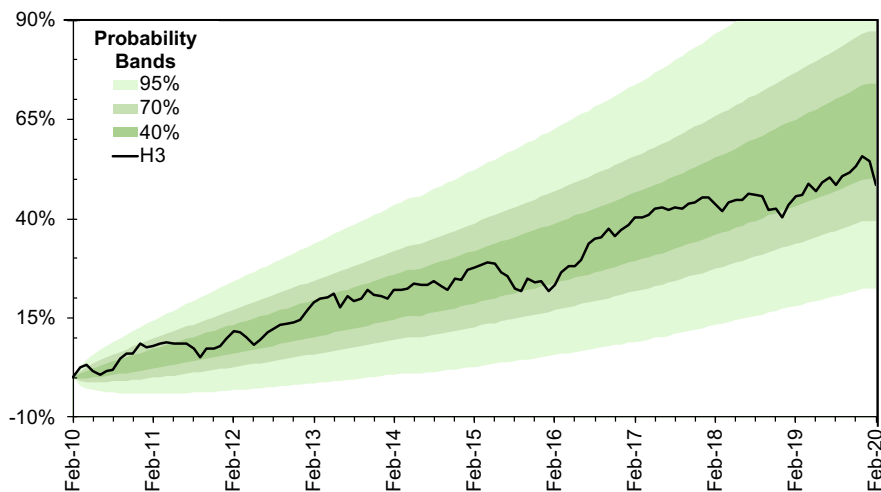
Defined Volatility: **4.50%**

Capital Protections

Over Full Time Horizon: **95%**

	Returns	Volatility
3 months	-3.30%	-
6 months	-1.18%	-
1 year	1.62%	5.69%
3 years	4.06%	4.32%
5 years	13.41%	4.60%
10 years	44.17%	4.41%
Annualised	3.73%	4.44%

USD Performance



Defined risk-return profile

Defined Mean Return: **5.60%**

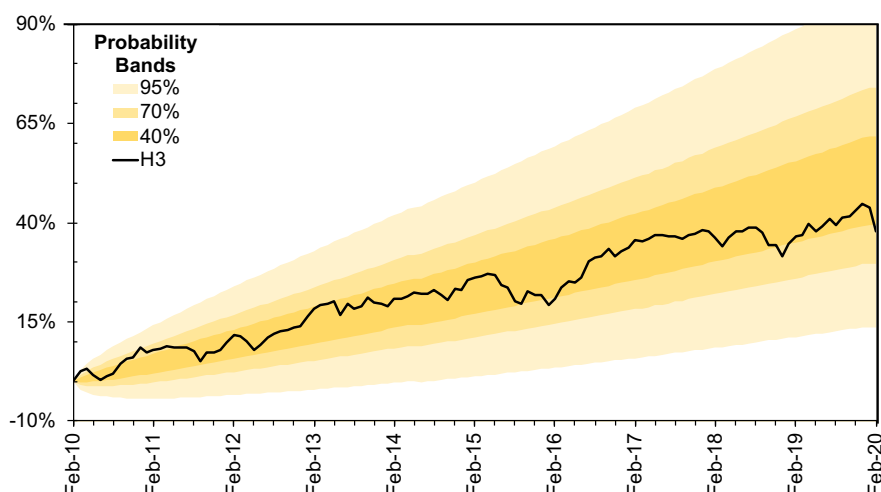
Defined Volatility: **4.50%**

Capital Protections

Over Full Time Horizon: **95%**

	Returns	Volatility
3 months	-3.08%	-
6 months	-0.05%	-
1 year	1.95%	5.84%
3 years	5.86%	4.39%
5 years	16.20%	4.65%
10 years	48.52%	4.43%
Annualised	4.03%	4.62%

EUR Performance



Defined risk-return profile

Defined Mean Return: **4.10%**

Defined Volatility: **4.50%**

Capital Protections

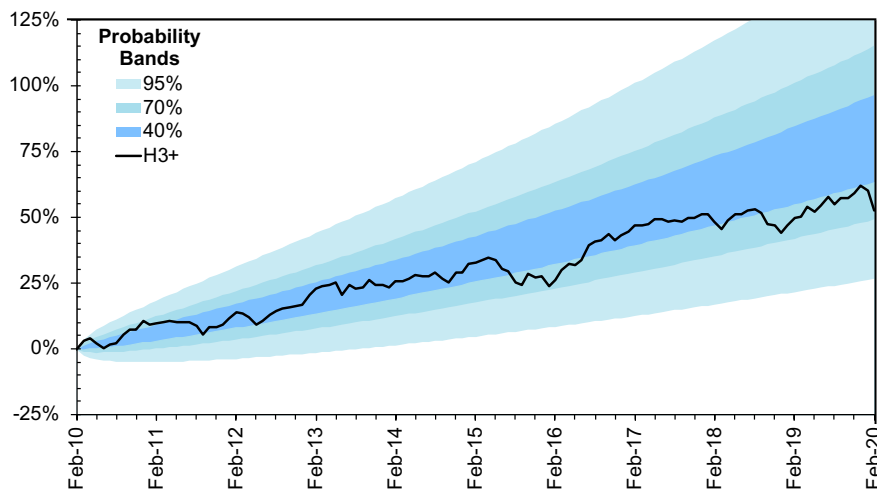
Over Full Time Horizon: **93%**

	Returns	Volatility
3 months	-3.63%	-
6 months	-0.93%	-
1 year	0.95%	5.91%
3 years	1.83%	4.60%
5 years	9.40%	4.75%
10 years	37.94%	4.50%
Annualised	3.27%	4.61%

Horizon 3+ Strategy

Create tomorrow.
Start today.

GBP Performance



Defined risk-return profile

Defined Mean Return: **6.00%**

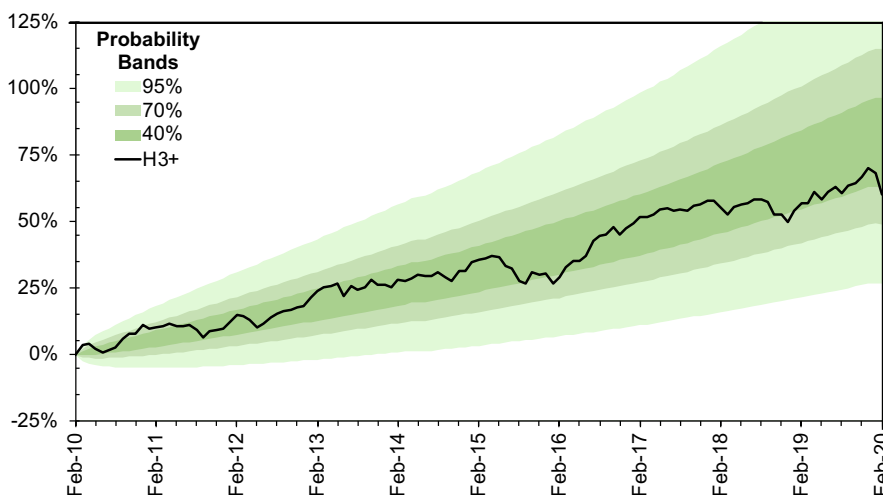
Defined Volatility: **5.60%**

Capital Protections

Over Full Time Horizon: **None**

	Returns	Volatility
3 months	-4.12%	-
6 months	-1.52%	-
1 year	1.86%	7.22%
3 years	3.89%	5.56%
5 years	14.88%	5.96%
10 years	52.72%	5.73%
Annualised	4.33%	5.77%

USD Performance



Defined risk-return profile

Defined Mean Return: **6.60%**

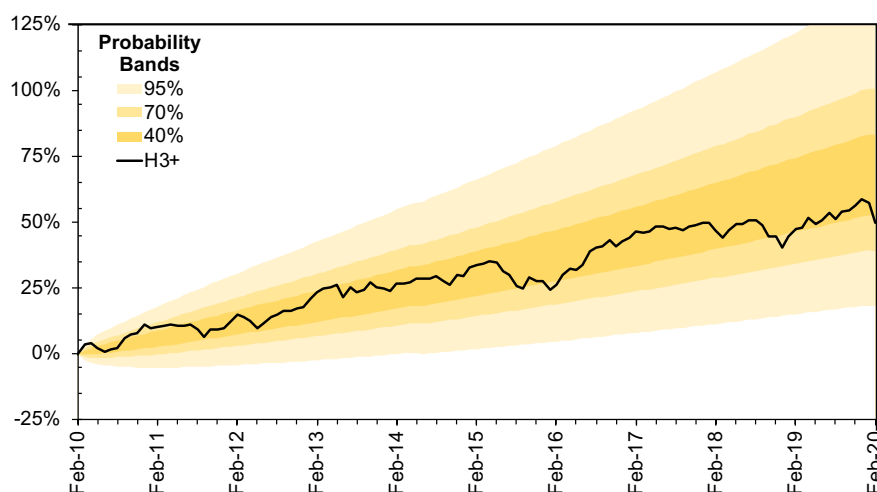
Defined Volatility: **5.60%**

Capital Protections

Over Full Time Horizon: **None**

	Returns	Volatility
3 months	-3.88%	-
6 months	-0.13%	-
1 year	2.07%	7.40%
3 years	5.62%	5.64%
5 years	18.28%	6.02%
10 years	60.18%	5.76%
Annualised	4.82%	6.00%

EUR Performance



Defined risk-return profile

Defined Mean Return: **5.25%**

Defined Volatility: **5.60%**

Capital Protections

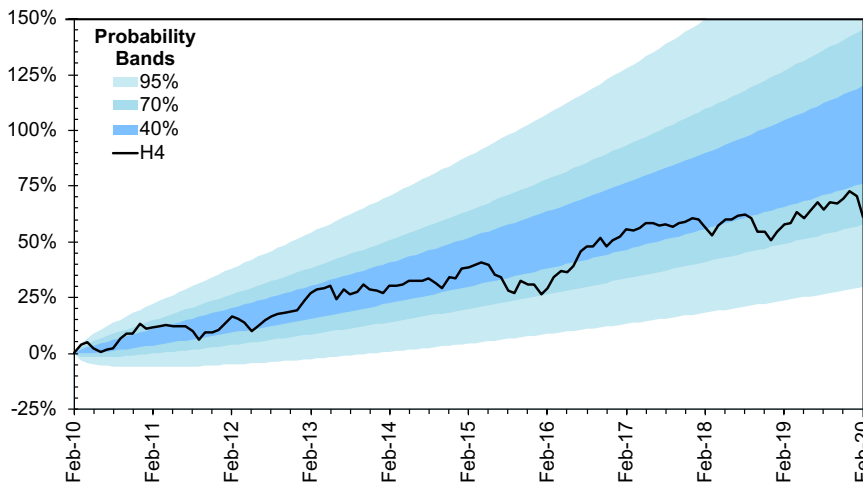
Over Full Time Horizon: **None**

	Returns	Volatility
3 months	-4.46%	-
6 months	-0.99%	-
1 year	1.40%	7.50%
3 years	2.26%	5.92%
5 years	11.90%	6.16%
10 years	49.60%	5.84%
Annualised	4.11%	6.01%

Horizon 4 Strategy

Create tomorrow.
Start today.

GBP Performance



Defined risk-return profile

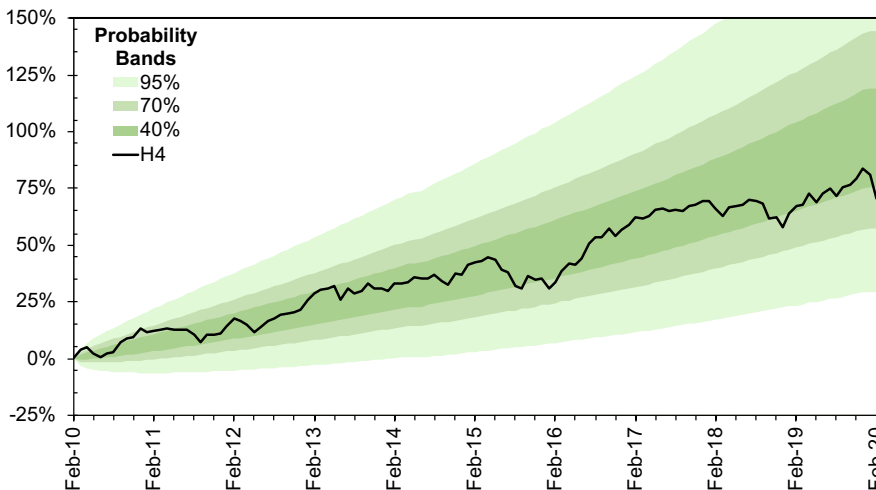
Defined Mean Return: **7.00%**
Defined Volatility: **6.75%**

Capital Protections

Over Full Time Horizon: **None**

	Returns	Volatility
3 months	-5.03%	-
6 months	-1.98%	-
1 year	1.94%	8.71%
3 years	3.55%	6.73%
5 years	16.06%	7.33%
10 years	61.10%	7.11%
Annualised	4.88%	7.16%

USD Performance



Defined risk-return profile

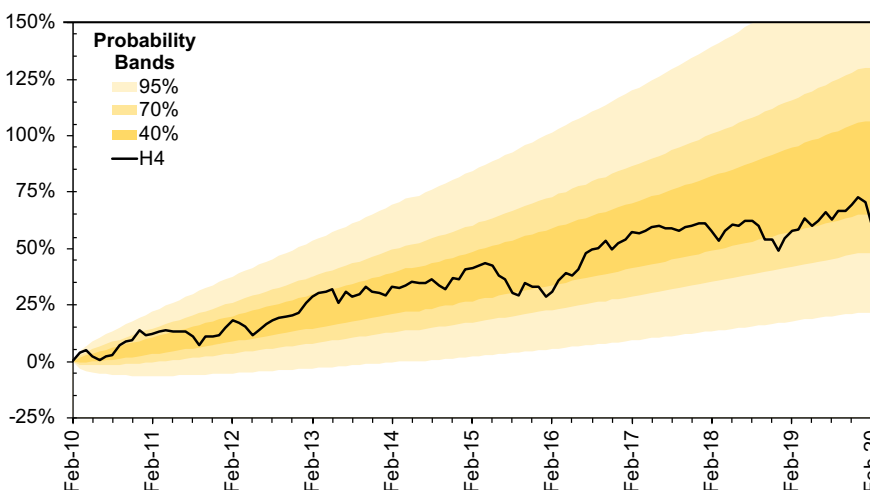
Defined Mean Return: **7.50%**
Defined Volatility: **6.75%**

Capital Protections

Over Full Time Horizon: **None**

	Returns	Volatility
3 months	-4.80%	-
6 months	-0.42%	-
1 year	1.98%	8.91%
3 years	5.29%	6.81%
5 years	19.97%	7.27%
10 years	70.66%	6.96%
Annualised	5.49%	7.25%

EUR Performance



Defined risk-return profile

Defined Mean Return: **6.25%**
Defined Volatility: **6.75%**

Capital Protections

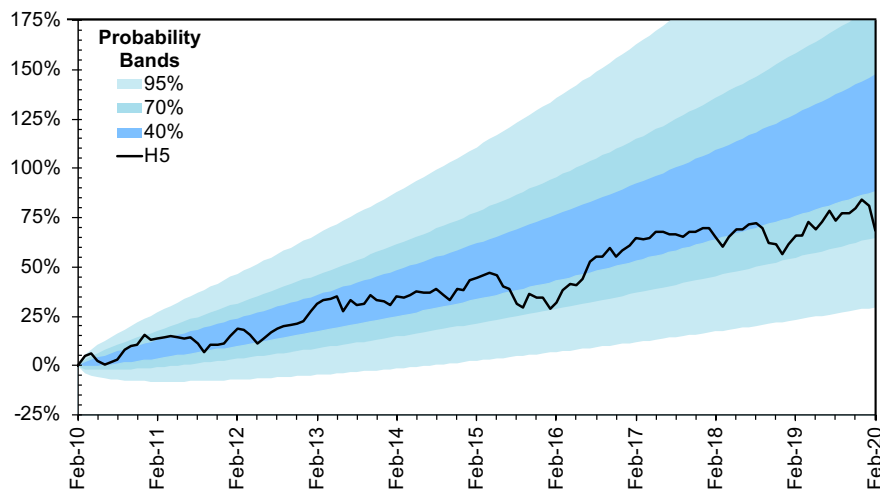
Over Full Time Horizon: **None**

	Returns	Volatility
3 months	-5.41%	-
6 months	-1.27%	-
1 year	1.53%	9.05%
3 years	2.08%	7.16%
5 years	13.34%	7.56%
10 years	60.45%	7.23%
Annualised	4.84%	7.48%

Horizon 5 Strategy

Create tomorrow.
Start today.

GBP Performance



Defined risk-return profile

Defined Mean Return: **8.00%**

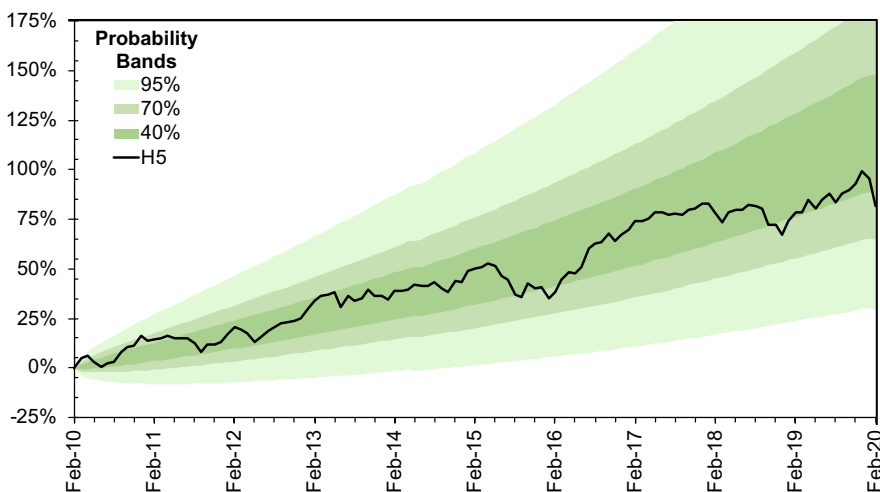
Defined Volatility: **8.25%**

Capital Protections

Over Full Time Horizon: **None**

	Returns	Volatility
3 months	-6.32%	-
6 months	-2.79%	-
1 year	1.66%	10.57%
3 years	2.62%	8.14%
5 years	16.50%	8.83%
10 years	68.64%	8.55%
Annualised	5.36%	8.61%

USD Performance



Defined risk-return profile

Defined Mean Return: **8.45%**

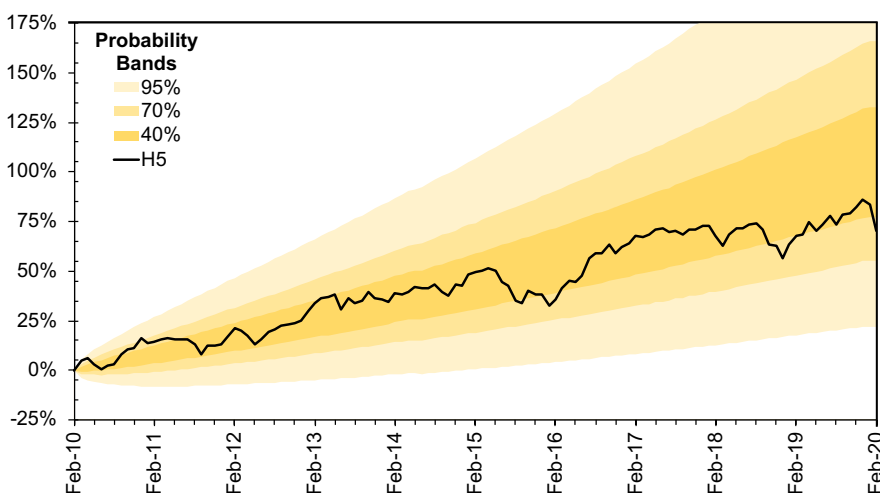
Defined Volatility: **8.25%**

Capital Protections

Over Full Time Horizon: **None**

	Returns	Volatility
3 months	-6.08%	-
6 months	-1.01%	-
1 year	1.54%	10.82%
3 years	4.22%	8.24%
5 years	20.90%	8.79%
10 years	81.36%	8.42%
Annualised	6.13%	8.76%

EUR Performance



Defined risk-return profile

Defined Mean Return: **7.25%**

Defined Volatility: **8.25%**

Capital Protections

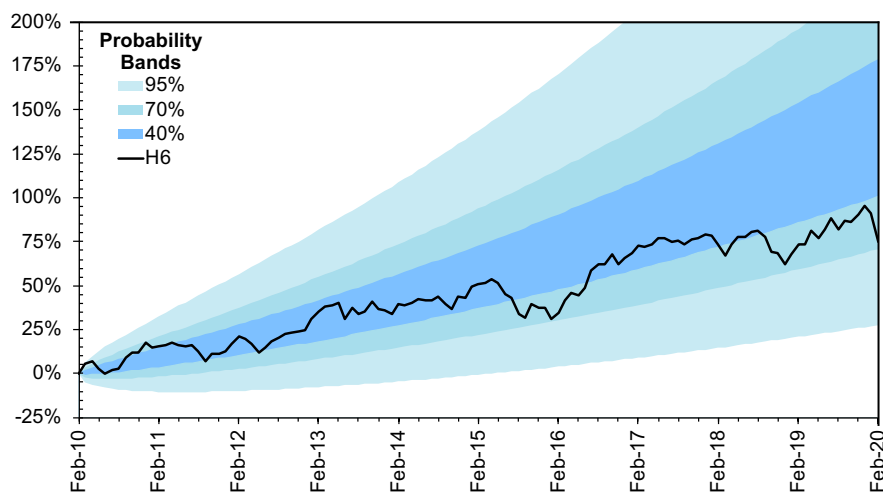
Over Full Time Horizon: **None**

	Returns	Volatility
3 months	-6.74%	-
6 months	-1.88%	-
1 year	1.30%	10.99%
3 years	1.29%	8.66%
5 years	14.05%	9.11%
10 years	70.20%	8.70%
Annualised	5.46%	8.99%

Horizon 6 Strategy

Create tomorrow.
Start today.

GBP Performance



Defined risk-return profile

Defined Mean Return: **9.00%**

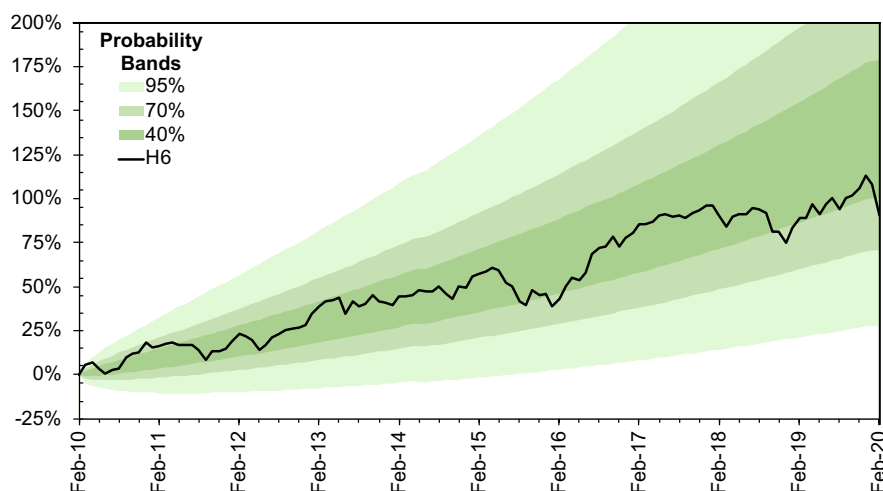
Defined Volatility: **10.00%**

Capital Protections

Over Full Time Horizon: **None**

	Returns	Volatility
3 months	-7.89%	-
6 months	-3.91%	-
1 year	1.03%	12.60%
3 years	1.21%	9.63%
5 years	16.26%	10.43%
10 years	75.19%	10.08%
Annualised	5.77%	10.15%

USD Performance



Defined risk-return profile

Defined Mean Return: **9.40%**

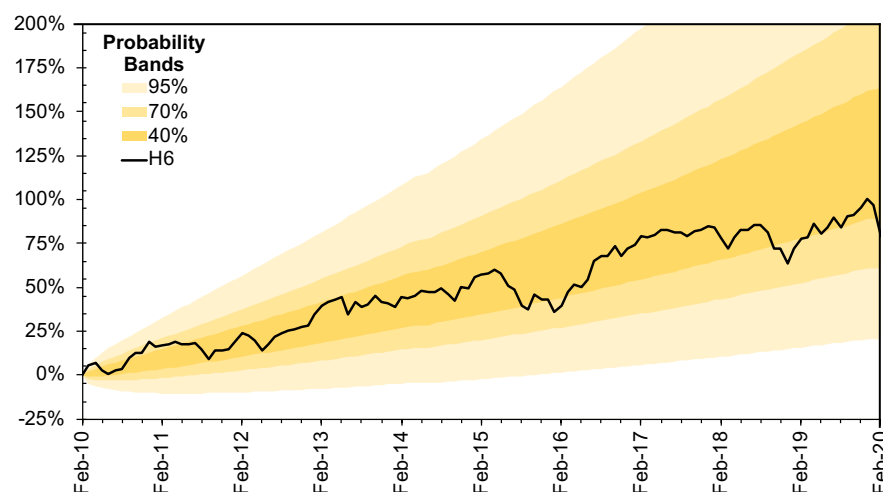
Defined Volatility: **10.00%**

Capital Protections

Over Full Time Horizon: **None**

	Returns	Volatility
3 months	-7.69%	-
6 months	-1.98%	-
1 year	0.62%	12.89%
3 years	2.47%	9.75%
5 years	20.78%	10.35%
10 years	90.34%	9.89%
Annualised	6.65%	10.28%

EUR Performance



Defined risk-return profile

Defined Mean Return: **8.25%**

Defined Volatility: **10.00%**

Capital Protections

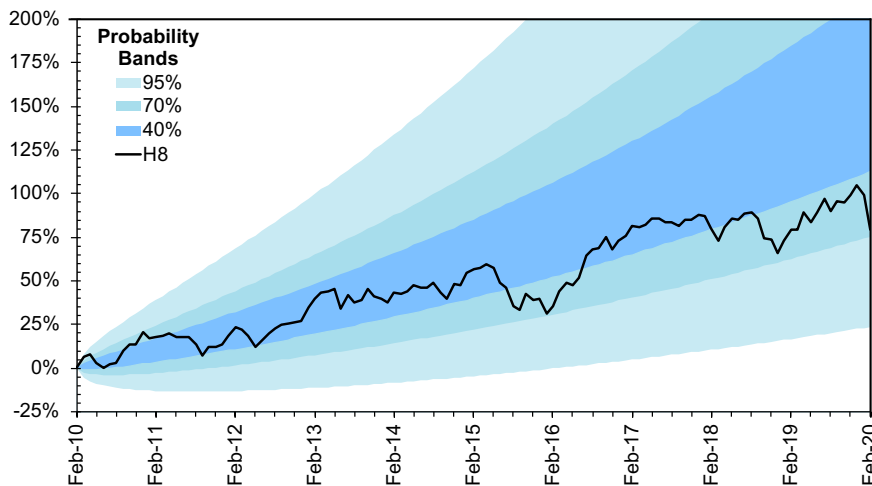
Over Full Time Horizon: **None**

	Returns	Volatility
3 months	-8.36%	-
6 months	-2.83%	-
1 year	0.71%	13.12%
3 years	0.03%	10.25%
5 years	14.09%	10.76%
10 years	79.20%	10.27%
Annualised	6.01%	10.61%

Horizon 8 Strategy

Create tomorrow.
Start today.

GBP Performance



Defined risk-return profile

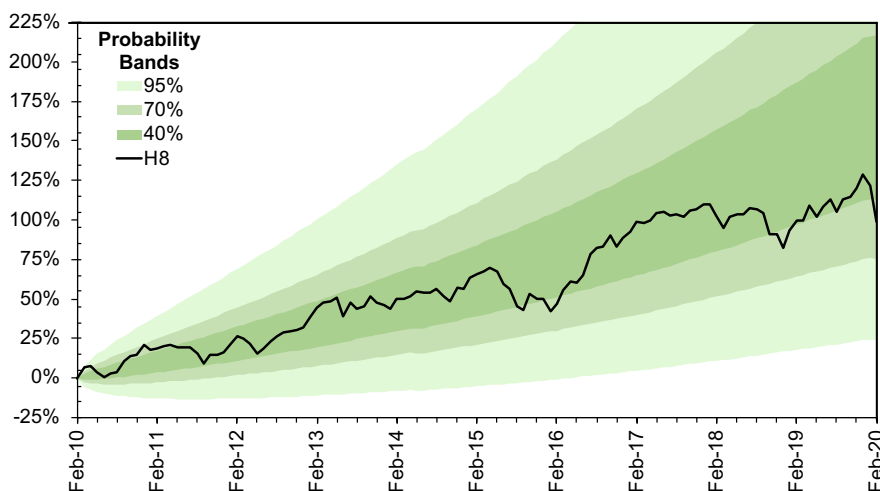
Defined Mean Return: **10.00%**
Defined Volatility: **12.00%**

Capital Protections

Over Full Time Horizon: **None**

	Returns	Volatility
3 months	-9.71%	-
6 months	-5.27%	-
1 year	0.14%	14.94%
3 years	-0.93%	11.36%
5 years	14.89%	12.30%
10 years	79.71%	11.89%
Annualised	6.04%	11.98%

USD Performance



Defined risk-return profile

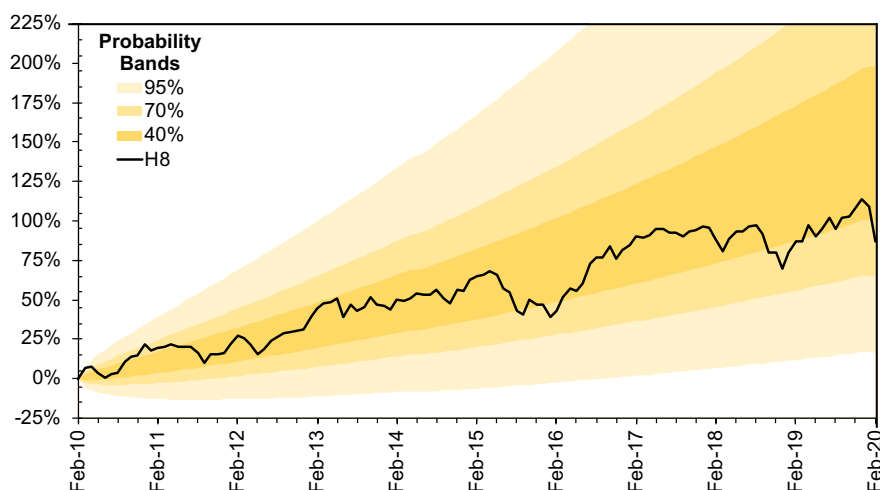
Defined Mean Return: **10.35%**
Defined Volatility: **12.00%**

Capital Protections

Over Full Time Horizon: **None**

	Returns	Volatility
3 months	-9.53%	-
6 months	-3.15%	-
1 year	-0.53%	15.27%
3 years	0.13%	11.49%
5 years	20.00%	12.17%
10 years	98.86%	11.61%
Annualised	7.12%	12.05%

EUR Performance



Defined risk-return profile

Defined Mean Return: **9.25%**
Defined Volatility: **12.00%**

Capital Protections

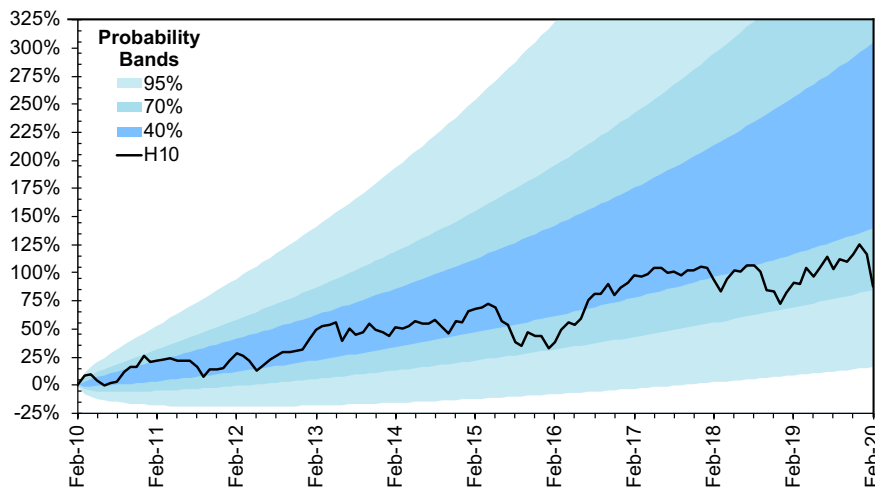
Over Full Time Horizon: **None**

	Returns	Volatility
3 months	-10.25%	-
6 months	-3.99%	-
1 year	-0.14%	15.57%
3 years	-1.75%	12.07%
5 years	13.40%	12.57%
10 years	86.78%	11.94%
Annualised	6.45%	12.31%

Horizon 10 Strategy

Create tomorrow.
Start today.

GBP Performance



Defined risk-return profile

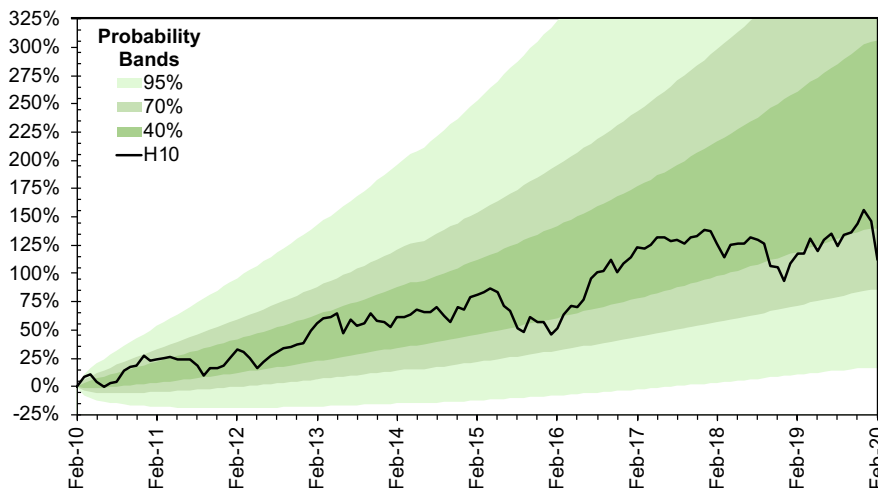
Defined Mean Return: **12.00%**
Defined Volatility: **16.00%**

Capital Protections

Over Full Time Horizon: **None**

	Returns	Volatility
3 months	-13.25%	-
6 months	-7.86%	-
1 year	-1.57%	19.87%
3 years	-5.29%	15.06%
5 years	11.83%	16.04%
10 years	87.77%	15.38%
Annualised	6.50%	15.47%

USD Performance



Defined risk-return profile

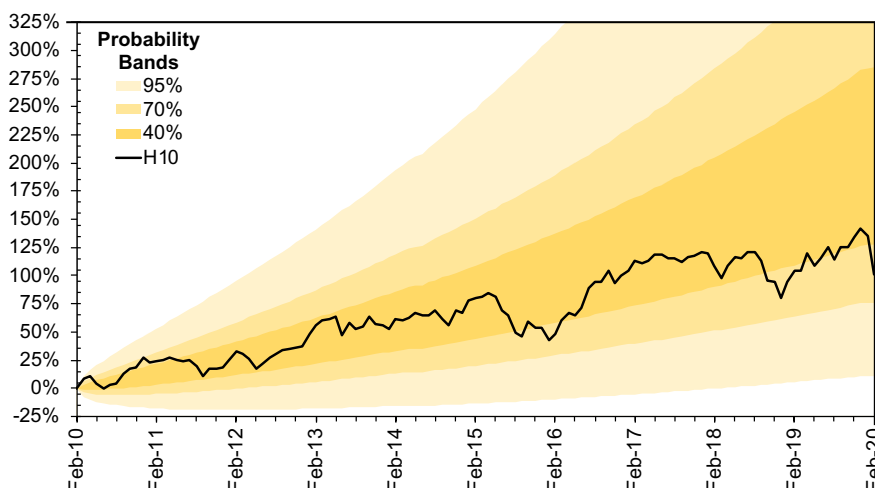
Defined Mean Return: **12.25%**
Defined Volatility: **16.00%**

Capital Protections

Over Full Time Horizon: **None**

	Returns	Volatility
3 months	-13.08%	-
6 months	-5.23%	-
1 year	-2.70%	20.27%
3 years	-5.19%	15.27%
5 years	16.64%	16.20%
10 years	111.93%	15.47%
Annualised	7.80%	16.05%

EUR Performance



Defined risk-return profile

Defined Mean Return: **11.50%**
Defined Volatility: **16.00%**

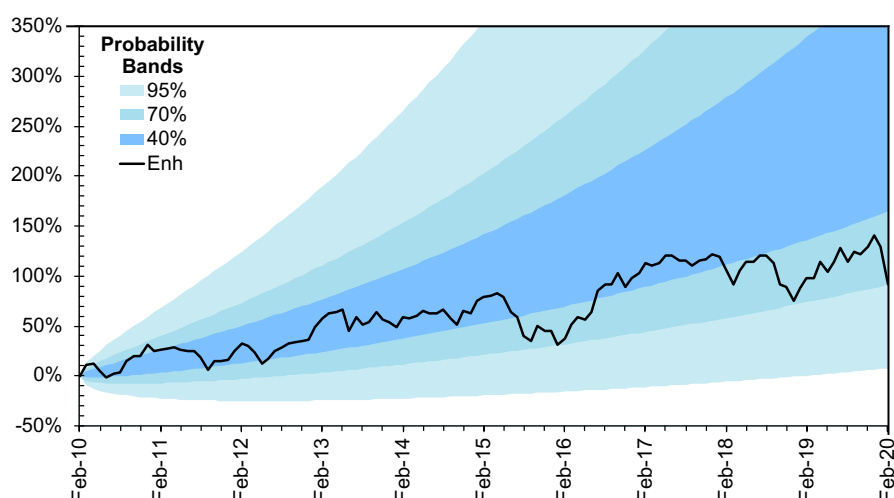
Capital Protections

Over Full Time Horizon: **None**

	Returns	Volatility
3 months	-13.89%	-
6 months	-6.05%	-
1 year	-1.56%	20.72%
3 years	-5.46%	16.05%
5 years	11.78%	16.59%
10 years	101.26%	15.68%
Annualised	7.24%	16.14%

Enhanced Growth Strategies

GBP Performance



Defined risk-return profile

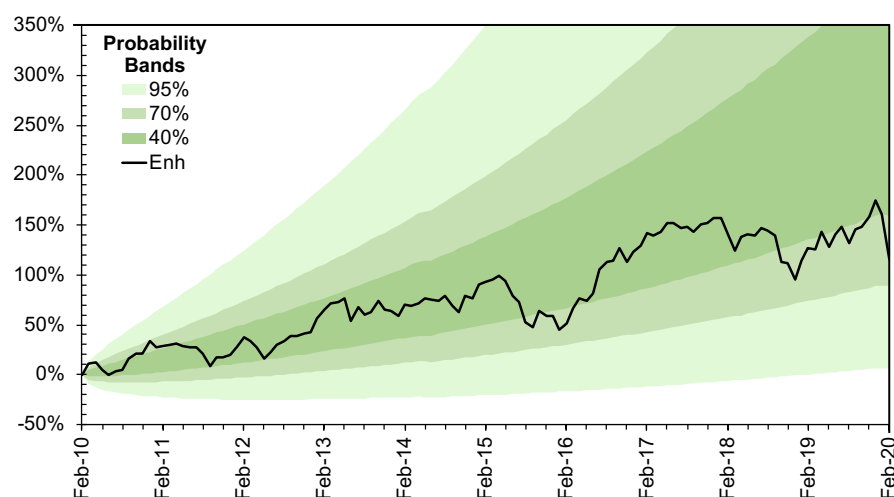
Defined Mean Return: **13.85%**
Defined Volatility: **20.00%**

Capital Protections

Over Full Time Horizon: **None**

	Returns	Volatility
3 months	-16.79%	-
6 months	-10.55%	-
1 year	-3.50%	24.79%
3 years	-10.31%	18.79%
5 years	7.14%	20.03%
10 years	91.11%	19.22%
Annualised	6.69%	19.33%

USD Performance



Defined risk-return profile

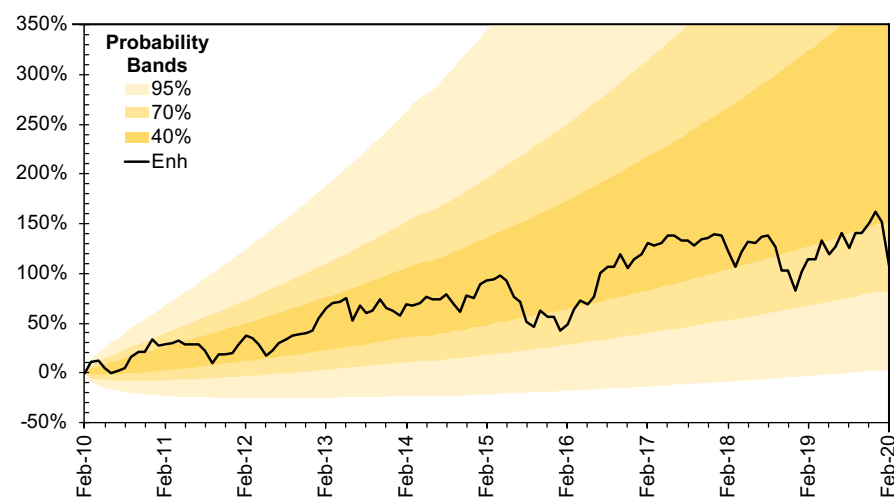
Defined Mean Return: **14.00%**
Defined Volatility: **20.00%**

Capital Protections

Over Full Time Horizon: **None**

	Returns	Volatility
3 months	-16.64%	-
6 months	-7.45%	-
1 year	-5.07%	25.25%
3 years	-10.94%	19.03%
5 years	11.16%	20.22%
10 years	114.91%	19.33%
Annualised	7.95%	20.06%

EUR Performance



Defined risk-return profile

Defined Mean Return: **13.50%**
Defined Volatility: **20.00%**

Capital Protections

Over Full Time Horizon: **None**

	Returns	Volatility
3 months	-17.59%	-
6 months	-8.36%	-
1 year	-3.46%	25.86%
3 years	-10.28%	20.04%
5 years	7.60%	20.72%
10 years	106.88%	19.59%
Annualised	7.54%	20.18%

Isle of Man | Head Office
Capital International Group
Capital House
Circular Road
Douglas
Isle of Man
IM1 1AG

+44 (0) 1624 654200
info@capital-iom.com

South Africa Office
Capital International SA
Great Westerford
240 Main Road
Rondebosch 7700
South Africa

+27 (0) 21 201 1070
info@capital-sa.com



Issue date: 09/03/20 - PCA02020

This document has been prepared for information purposes only and does not constitute an offer or an invitation, by or on behalf of any company within the Capital International Group of companies or any associated company, to buy or sell any security. Nor does it form a constituent part of any contract that may be entered into between us. Opinions constitute our judgement as of this date and are subject to change. The information contained herein is believed to be correct, but its accuracy cannot be guaranteed. Any reference to past performance is not necessarily a guide to the future. The price of a security may go down as well as up and its value may be adversely affected by currency fluctuations. The company, its clients and officers may have a position in, or engage in transactions in any of the securities mentioned. PRISM GBP, USD and EUR Strategies were launched in June 2014, April 2018 and September 2018 respectively. Historical performance is calculated by reference to the actual investment performance of Fusion Alpha modelled into the PRISM product structure. PRISM reserves the right to levy a performance fee on the Master Investment Strategy on performance in excess of the defined return profiles. Full details of PRISM are contained in the PRISM Brochure, Terms of Business and associated literature which is available upon request.

Regulated activities are carried out on behalf of Capital International Group by its licensed member companies. Capital International Limited, Capital Treasury Services Limited, CIB Limited and Capital Financial Markets Limited are all licensed by the Isle of Man Financial Services Authority. Capital International Limited is a member of the London Stock Exchange. Registered Address: Capital House, Circular Road, Douglas, Isle of Man, IM1 1AG. CILSA Investments (PTY) Ltd (FSP No. 44894) and CILSA Solutions (PTY) Ltd (FSP No. 6650), t/a Capital International SA are licensed by the Financial Sector Conduct Authority in South Africa as Financial Service Providers. Registered Address: Office NG101A, Great Westford, 240 Main Road, Rondebosch 7700, South Africa. All subsidiary companies across both jurisdictions are represented under the Capital International Group brand.

