

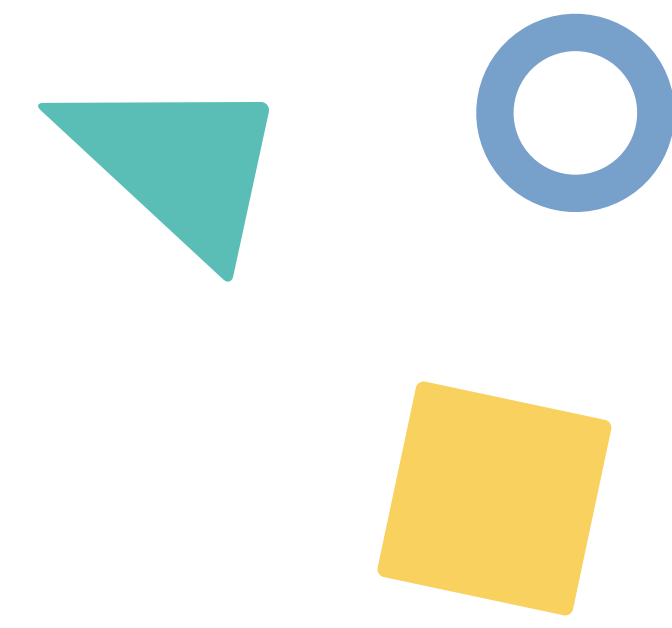
Tell Me More

“Creating experiences that smile”



Our Purpose

Vision + Values



Thank you so much for expressing an interest in The Little Blue Door, we are delighted that you would like to get to know us a bit better.

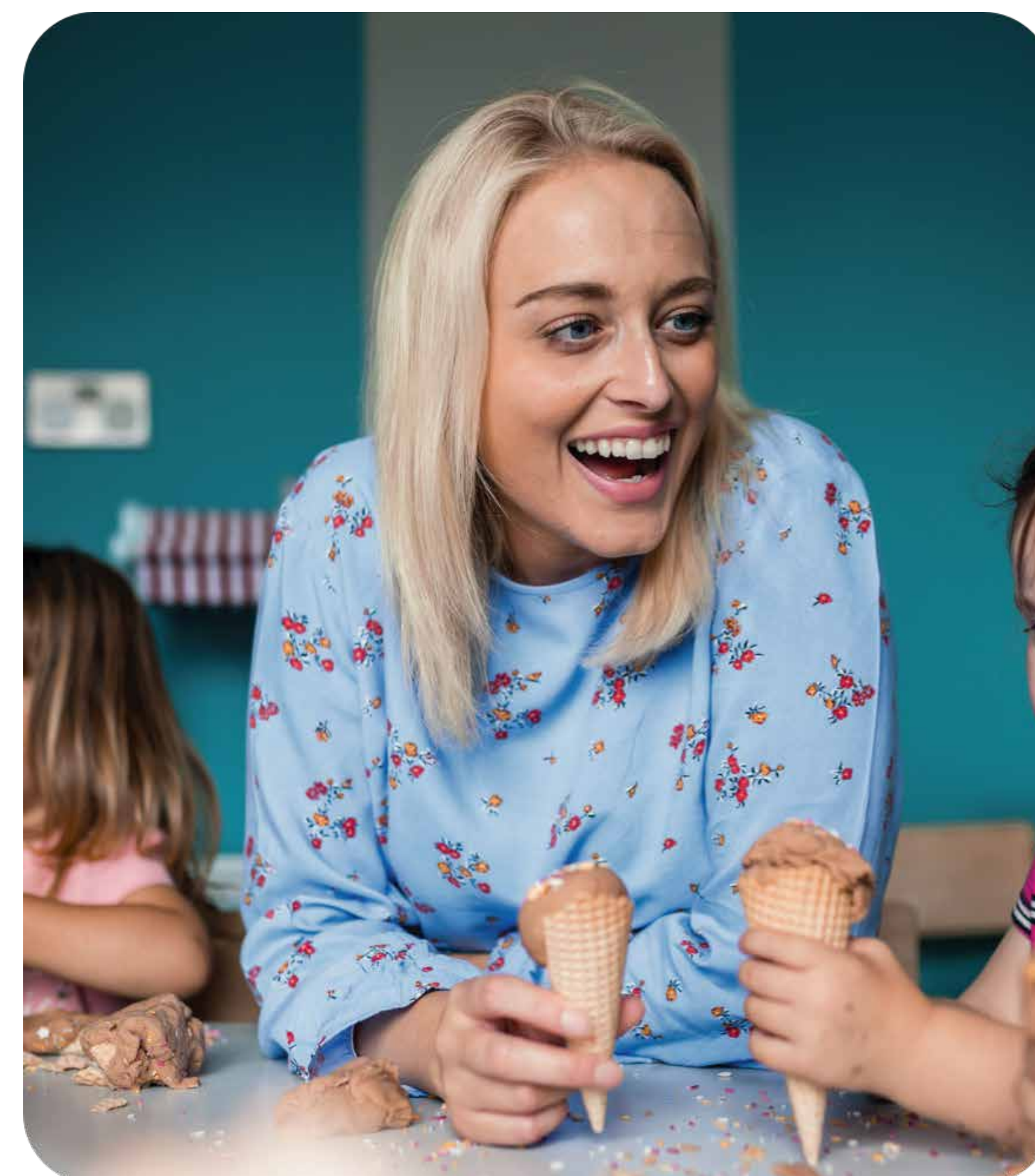
Very early on in my child care career, a close friend of mine asked me 'What is it that you love about what you do?' and I remember responding with 'I just love developing little minds and making a difference to children's lives'.

Many years on, this still holds true and has really helped me shape 'Our Why'. Any business should be able to easily and confidently articulate their 'why' but that is never more important than when loving and caring for children. So for us, it's pretty straight forward.



Lucy Davies

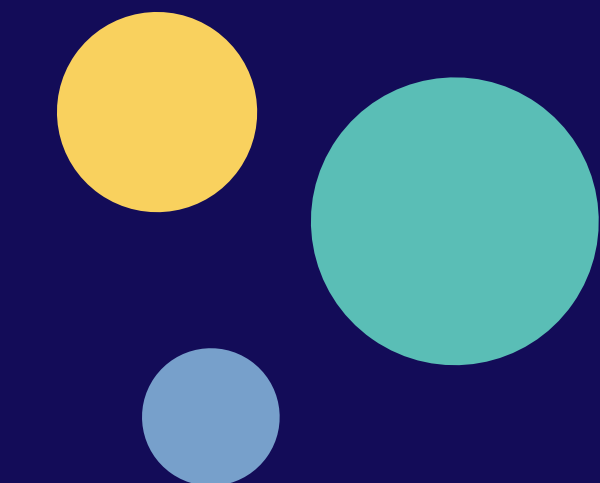
Nursery Principal, Level 4



Charlotte Utton

Nursery Manager, Level 6

OURWHY



'To Develop Little Minds'

We passionately believe in the idea of developing little minds. At the core of all we do is the desire to educate, stimulate and develop children on their journey to school.

OURVALUES

We believe in five key values that shape everything that we do at the Little Blue Door.



**Doing it
together**



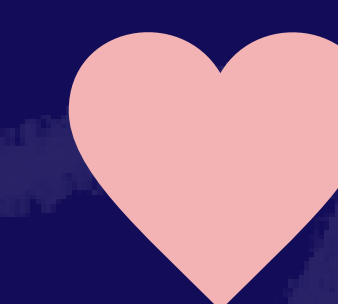
**Just like
home**



**Experiences
that smile**



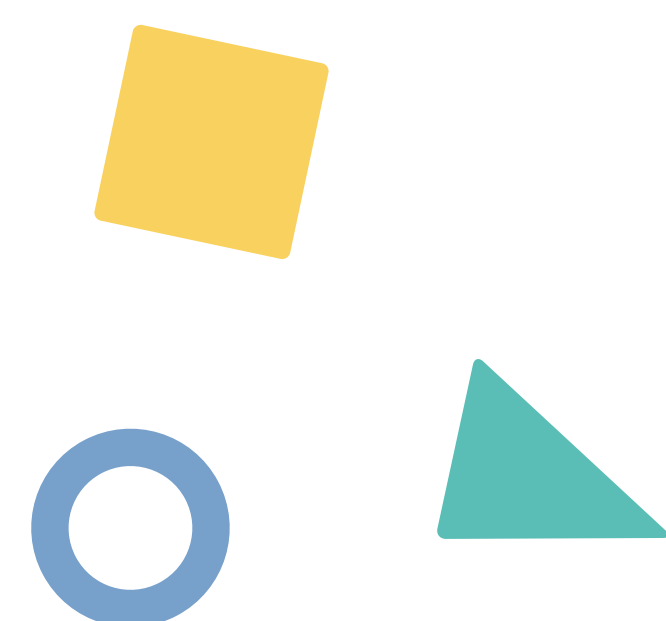
**Playful
Learning**



Love

Useful Information

Fees + Spaces



We have created four unique classrooms that will welcome children from 3 months to five years. These and our two outside play areas ensure we have the best environment to develop little minds.

Morning Session
8.00am – 1.00pm
Includes: Snack & Lunch

£38.00

Afternoon Session
1.00pm – 6.00pm
Includes: Snack & Light Tea

£38.00

School Day
8.00am – 4.00pm
Includes: Snack & Lunch

£49.75

Full Day
8.00am – 6.00pm
Includes: Snack, Lunch & Light Tea

£61.00

Spaces



Baby Snapdragon
3 months - 1 year



Johny Jump
1 - 2 years



Rocket Larks
2 - 3 years



Blazing Stars
3 - 5 years

Opening

Normal	Weekdays from 8.00am – 6.00pm
Early Doors	Weekdays from 7.30am – 8.00am



FAQ'S

Helpful questions and answers from the LBD Team

Who is in charge of The Little Blue Door, and what experience do they have?

The Principal of The Little Blue Door is Lucy Davies. Lucy has more than 12 years experience in childcare and is qualified to Level 4. Charlotte Utton is the Nursery Manager with 10 years childcare experience. Charlotte holds a Level 6 Degree in Early Childhood Studies and Early Years Teacher Status.

What sessions will be available?

We will operate four sessions:
8am-1pm • 1pm-6pm • 8am-4pm • 8am-6pm.

What if I start work before The Little Blue Door's first session and my child needs looking after?

We recognise that an early drop off can sometimes be a big help, so we will be offering an Early Blue Doors session from 7.30am which includes breakfast.

Is The Little Blue Door team qualified?

All of our team are qualified practitioners with some holding Level 6 degrees in Childcare. We also have apprentices that are working towards a relevant childcare qualification.

Outside play is important to me, do you have a garden even though you are in town?

We know that outside space is crucial throughout early years development. We have two outside areas, a private play area and an interactive garden. We hope you will love it as much as we do.

Do you accept funding?

Yes, we accept funded children. Please discuss your specific needs with the LBD team. Email us [here](#).

Do you charge a registration fee?

We do ask for £50 upon submission of your registration form to secure your place at The Little Blue Door. A £50 registration fee is also required to go on our waiting list if the sessions you require are currently unavailable.

My child's diet is important to me, what can I expect?

It is important to us too. We will provide a balanced menu of home cooked meals. If your child has a dietary requirement, please discuss this with your key person when starting, to ensure we can accommodate their dietary needs accordingly.

Will my child be able to experience day trips?

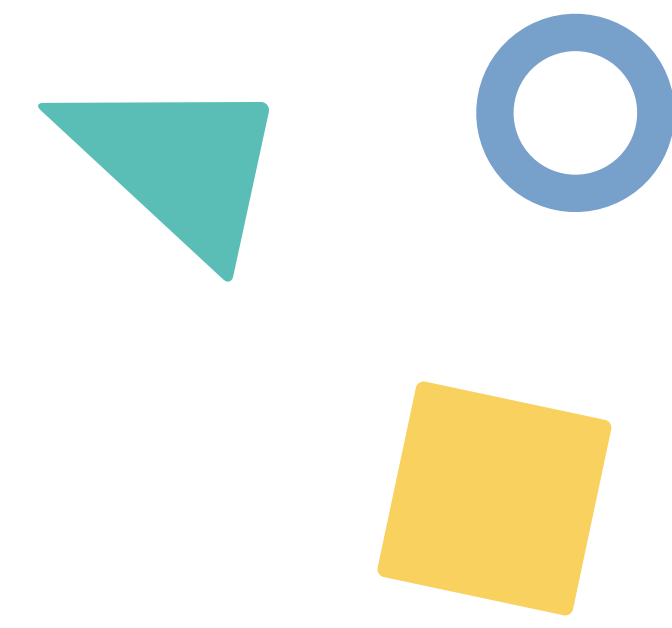
Yes, some of the best learning happens during field trips and we hope to build a really great reputation for the quality of our off-site trips.

You are in the centre of town, where can I park?

We have drop off bays for use by parents of The Little Blue Door. We also have a number of car parks within a very short walk of The Little Blue Door.

Our Purpose

Vision + Values



Thank you so much for expressing an interest in The Little Blue Door, we are delighted that you would like to get to know us a bit better.

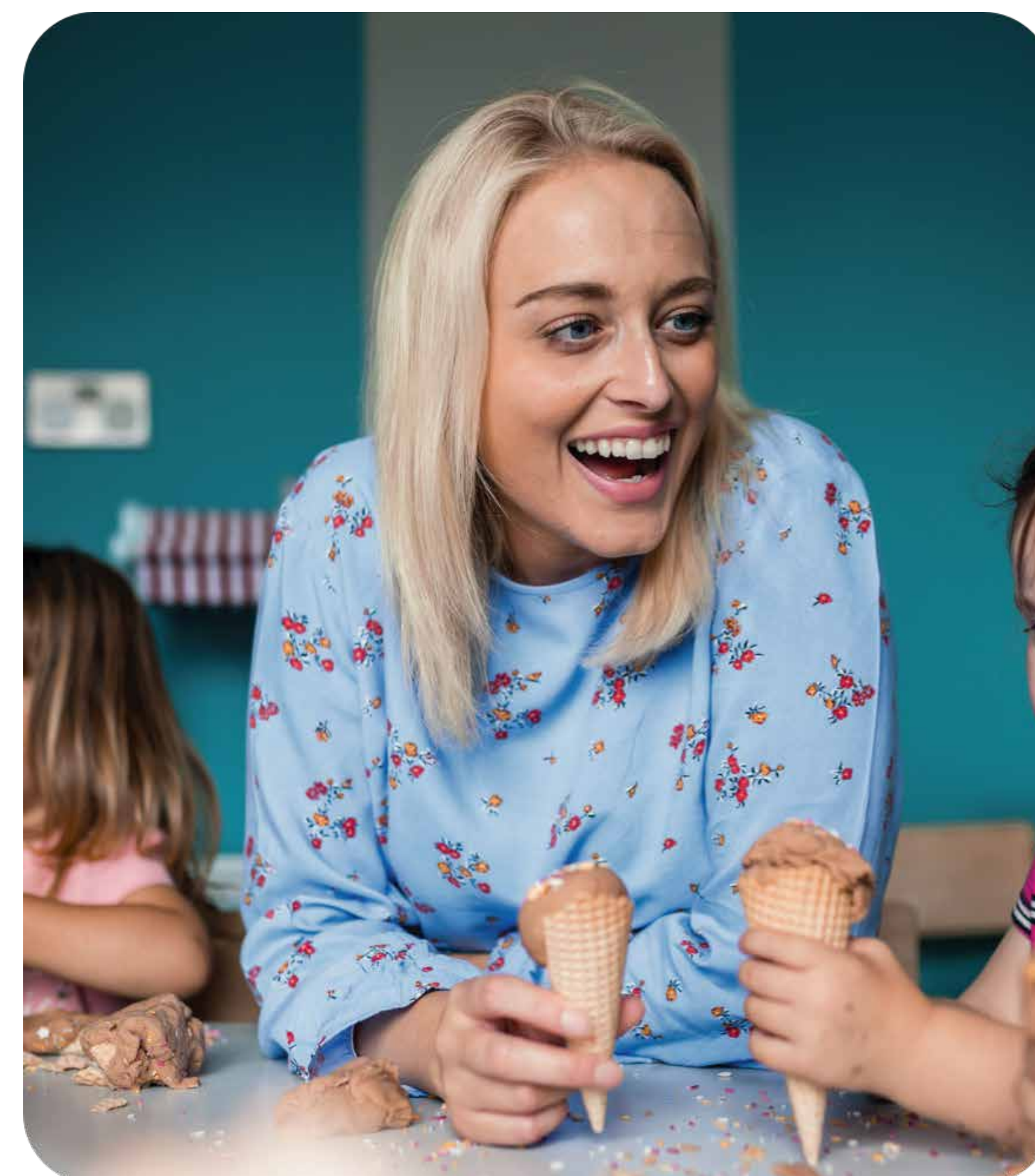
Very early on in my child care career, a close friend of mine asked me 'What is it that you love about what you do?' and I remember responding with 'I just love developing little minds and making a difference to children's lives'.

Many years on, this still holds true and has really helped me shape 'Our Why'. Any business should be able to easily and confidently articulate their 'why' but that is never more important than when loving and caring for children. So for us, it's pretty straight forward.



Lucy Davies

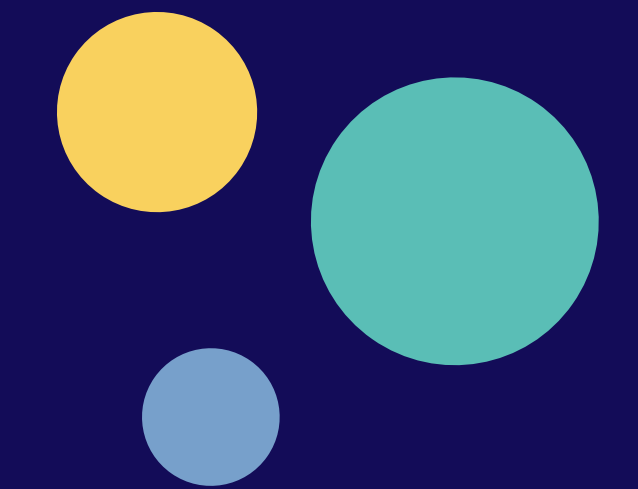
Nursery Principal, Level 4



Charlotte Utton

Nursery Manager, Level 6

OURWHY



'To Develop Little Minds'

We passionately believe in the idea of developing little minds. At the core of all we do is the desire to educate, stimulate and develop children on their journey to school.

OURVALUES

We believe in five key values that shape everything that we do at the Little Blue Door.



**Doing it
together**



**Just like
home**



**Experiences
that smile**



**Playful
Learning**



Love



FAQ'S

Helpful questions and answers from the LBD Team

Who is in charge of the Little Blue Door?

The Principal of The Little Blue Door is Lucy Collins. Lucy has more than 10 years experience in childcare and is qualified to Level 4

Is the Little Blue Door team qualified?

Yes, every single member of our team is a qualified practitioner.

What sessions will be available?

We will operate four sessions: 8am-1pm, 1pm-6pm, 8am-4pm and 8am-6pm. More information is available on our [Fees](#) page

What if I start work before the first session starts?

We recognise that an early drop off can sometimes be a big help, so we offer a service from 7.30 am.

Do you charge a registration fee?

We do ask for £50 upon submission of your registration form to secure your place at The Little Blue Door.

Do you accept funding?

Yes, we accept funded children. Please discuss your specific needs with the LBD team. Email us [here](#).

Outside play is important to me, do you have a garden?

We know that outside space is crucial throughout early years development. We have two outside areas, a private play area and an interactive garden.

My child's diet is important to me, what can I expect?

It is important to us too. We will provide a balanced menu of home cooked meals that meet all dietary requirements.

Will my child be able to experience day trips?

Yes, some of the best learning happens during field trips and we hope to build a really great reputation for the quality of our off-site trips.

You are in the centre of town, where can I park?

We have drop off bays for use by parents of The Little Blue Door. We also have a number of car parks within a very short walk of The Little Blue Door.

Gallery

A selection of images from the Little Blue Door.

