



Black&White Negative Printing

Printing from Negatives that have already been developed.

MAIL TO: 108 Garner Road
Spartanburg, SC 29303

PHONE: 864-583-6835

EMAIL: PhotoOrders@SpartanPhotoCenter.com

GO TO: www.SpartanPhotoCenter.com

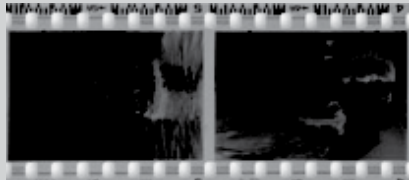
NAME			
ADDRESS			
CITY			
STATE		ZIP	
PHONE			
EMAIL			
<input type="checkbox"/> CHECK OR MONEY ORDER		<input type="checkbox"/> PAYPAL (requires valid email)	
CREDIT CARD _____			
EXPIRATION _____		CVC (on card back) _____	
BILLING ADDRESS _____		ZIP CODE _____	

Form Version: 2021

Below is a visual guide to help you identify what type of film you are sending us. They are separated in two categories: *Scanning Charged by the Frame* and *Scanning Charged by the Strip*.

Scanning Charged by the STRIP

Negatives not shown at actual size.

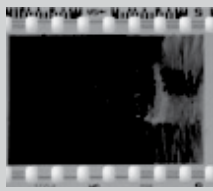


35mm Strips
(2 or more frames together is defined as a strip)

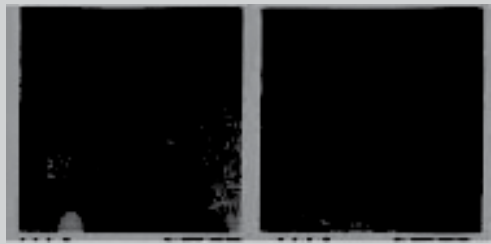


APS
Scanning charged by the strip

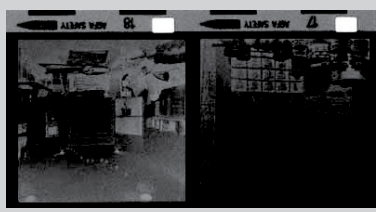
Scanning Charged by the FRAME



Individually cut 35mm Frames
(Single 35mm frames)



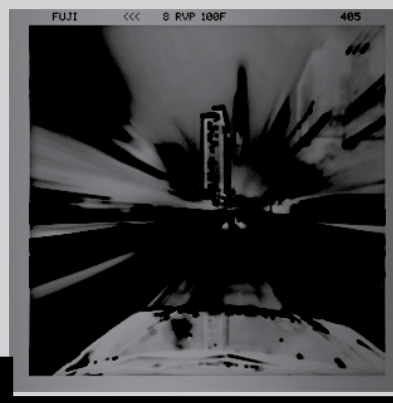
127



126



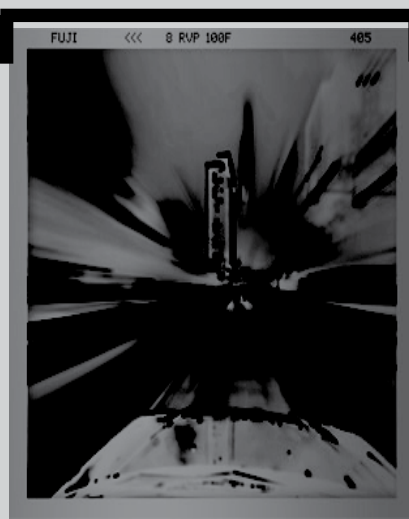
110



120

Please Note:
Your film will qualify for 120 scanning charges if either side of the film is 61mm or smaller. (6.1cm or 2.4in)

61mm or smaller
(6.1cm or 2.4in)



62mm or larger
(6.2cm or 2.44in)

116/616

Please Note:
116/616 film is very similar in size to 120 but results in a different scan charge. The film will be 62mm or larger. (6.2cm or 2.44in)

Black&White Negative Printing

1

Checkmark the type of film and write the quantity below.

PLEASE NOTE:

- For 35mm strips and APS film: *Quantity is by the strip.*
- For Individually cut 35mm frames: *Quantity is by the frame.*
- For 120, 110, 126, 127, 116/616, or other unidentified film: *Quantity is by the frame.*

35mm Strips

QTY: _____
by the strip

Individually Cut 35mm Frames

QTY: _____
by the frame

APS

QTY: _____
by the strip

120

QTY: _____
by the frame

110

QTY: _____
by the frame

126

QTY: _____
by the frame

127

QTY: _____
by the frame

116/616

QTY: _____
by the frame

Unidentified Film

QTY: _____
by the frame

2

Below are the scanning charges for your film. Pay close attention as to whether your film is priced by the strip or by the frame. Spartan Photo Center reserves the right to make corrections to errors if any are found.

For 35mm Strips and APS Film

Scan Charges by the Strip

First Strip: \$7.50

Every Strip After: \$1.00

For 120 Film

Scan Charges by the Frame

First Frame: \$7.50

Every Frame After: \$1.00

**For Individually Cut 35mm frames,
110, 126, 127, 116/616 & Unidentified Film**

Scan Charges by the Frame

First Frame: \$10.00

Every Frame After: \$3.00

Add your scan charges from this step here: →

\$

Step 2 Total

Continue to Page 3

Black&White Negative Printing

3

Below are our print sizes. Answer the questions below. For Example: If you have 60 images and you want one 4x6 of each slide then the charge is \$0.36 for each print. If you have one image and you want 60 4x6 prints of that one image then the charge is \$0.36 per print (60 x \$0.36 = \$21.60)

Print Size	Qty 1-25	Qty 26-74	Qty75+
3.5x5	\$0.59	\$0.36	\$0.29
4x6 or 4x4	\$0.59	\$0.36	\$0.29
5x7 or 5x5	\$2.69	\$1.89	\$1.89
8x10	\$5.49	\$2.99	\$2.99
8x12	\$6.99	\$3.99	\$3.99

**Anything larger please call.
Additional scanning charges will apply.**

A Do you want all of your film printed the same print size? Yes No

B If yes, what print size and quantity would you like all your slides to be printed?

Print Size:

Quantity:
of prints for each image

C If no, then indicate what frame(s) you want printed at what size and quantity below.

Film Type	Frame #	Print Size	Print Qty

Film Type	Frame #	Print Size	Print Qty

Add your total print charges from this step here:

\$
Step 3 Total

4

We provide other services for your B&W film. View the list below for what we offer and checkmark the box of what you would like to add to your order.

Contact Sheet
8.5x11 size and bounded.
Thumbnail index with frame numbers of your images.

\$15.00

Index Prints
4x6 size
Thumbnail index with frame numbers of your images.

\$2.00

Data Disc
Images burned to a disc that can be viewed in your computer.

\$10.00

Digital Download
You will be emailed a Dropbox link to download the images directly to your computer.

\$6.00

Add your total service charges from this step here:

\$
Step 3 Total

Black&White Negative Printing

5 Write your scan charges, print charges and service charges in the boxes below and add those amounts with Shipping and Handling together.

Total from Step 2 Scan Charges	+	Total from Step 3 Print Charges	+	Total from Step 4 Service Charges	+	Shipping & Handling U.S.P.S. Within U.S. Only	=	SUBTOTAL
\$ <input type="text"/>		\$ <input type="text"/>		\$ <input type="text"/>		\$ 8.50		\$ <input type="text"/>

6 Write any special instructions you want regarding to this order below.

A If you are a SC resident then please add 7% sales tax to your subtotal. Write tax amount here: \longrightarrow

7% Tax SC Residents Only
\$ <input type="text"/>
GRAND TOTAL
\$ <input type="text"/>

B Write your GRAND TOTAL HERE: \longrightarrow

We reserve the right to make changes to your order total if we find mistakes made.

Limit of Liability: Submitting any film or negative to this firm for processing or other handling constitutes an agreement by you that any damages or loss by our company, subsidiaries, or agents, even though due to the negligence or other fault of our company, subsidiaries, or agents, will only entitle you to replacement with a like amount of unexposed film and processing. Except for such replacement, the acceptance of the film or negative is without other warranty or liability, and recovery for any incidental or consequential damages is excluded.
Spartan Photo Center is not responsible for any loss, damage or delay caused by the U.S. Postal Service, UPS, Fedex, or any other package carrier. Prices and terms are subject to change without notice.