

# ECO+ HOME LIFT



PREMIER





## ECO + HOME LIFT

A truly economical solution offering low energy consumption, space saving and simple installation. With many personalisation options to suit all tastes our ECO + Lift can be a great addition to provide access to any residential space.



### SPEED : 0.15 M/S

The ECO Lift offers smooth consistent speed between floors and is in conformity with machinery directive 2006/42/CE.



### LOW PIT & HEADROOM REQUIREMENTS

Pit required can be as low as 120mm\* or ramp can be provided. Minimum headroom from the top floor FFL can be an industry leading 2270mm\*.



### TRACTION & HYDRAULIC DRIVE OPTIONS

Drive options that are suited to the user and building requirements. We work with you to provide the best option.



### RATED LOAD: UP TO 600KG \*

Different drive options offer the opportunity to increase capacity of our ECO Lift for the most intensive uses.



### TRAVEL: 5 STOPS (14.6M) \*

Suitable for most residential and public spaces with a simple, fast installation.



### MEETS ALL LEGISLATION REQUIREMENTS

All of our products comply with Europe's strictest safety requirements. Ensuring safety with the latest EC directives.

\* These are possible min/max values, certain drive and building requirements may limit values. See brochures technical pages or contact a sales specialist for more information.





**ADD PERSONALITY WITH A RANGE OF FINISHING OPTIONS**

With options such as LED Lighting, and stainless steel and glass structures it will harmonise with any building, whether traditional or modern. The lift also has an array of non-standard custom finishes to choose from, and over 100 different configurations are possible.



**WIDE RANGE OF PHYSICAL AND TOUCH CONTROL OPTION**

We offer a range of control panels that can be configured with tactile physical buttons with a brushed radial finish. We can also provide our panels with touch controls under a layer high quality glass.



**CABINS DESIGNED FOR WHEELCHAIR ACCESS**

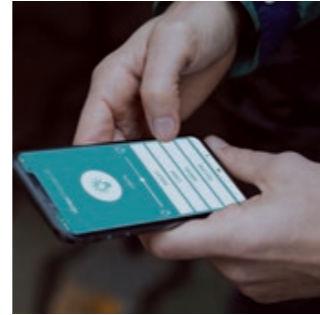
Our cabins are designed with ergonomics that suit disability access in any public space. With considered control placement and braille descriptions.



**CLEAR LCD DISPLAYS**

Bright, sharp LCD displays available for the landing / cabin controls.





## 72 MILLION DIFFERENT COLOURS

Through a simple app, or supplementing an already installed home automation system, the bluetooth protocol of your eco lift allows you to adjust the lighting's intensity, the light's warmth and the colour tones, configurable to 72 million different tones.





## STRUCTURES FOR INDOOR AND OUTDOOR USE

Our lifts can be provided with highly customisable structures. They are modular in design with different types of glass panelling to suit installations of all kinds and provide support when masonry work is unavailable. Our skilled engineering team ensures installation is completed quickly with great care to the surrounding environment.



## EASY TO FOLLOW & COMPREHENSIVE DRAWING PACK WITH ALL OF OUR PRODUCTS

Our visual site-specific drawing pack has been developed to provide clear instructions on how to prepare the site for our installation and give an understanding of the critical dimensions we need approval

### The drawing packs cover the following:

- Lift dimensions
- Shaft dimensions
- Forces and loading details
- Electrical Requirements
  - Fixing points
- Doors dimensions and fixing points
- Scaffolding, lighting and safety requirements
- Cabin and door finishes





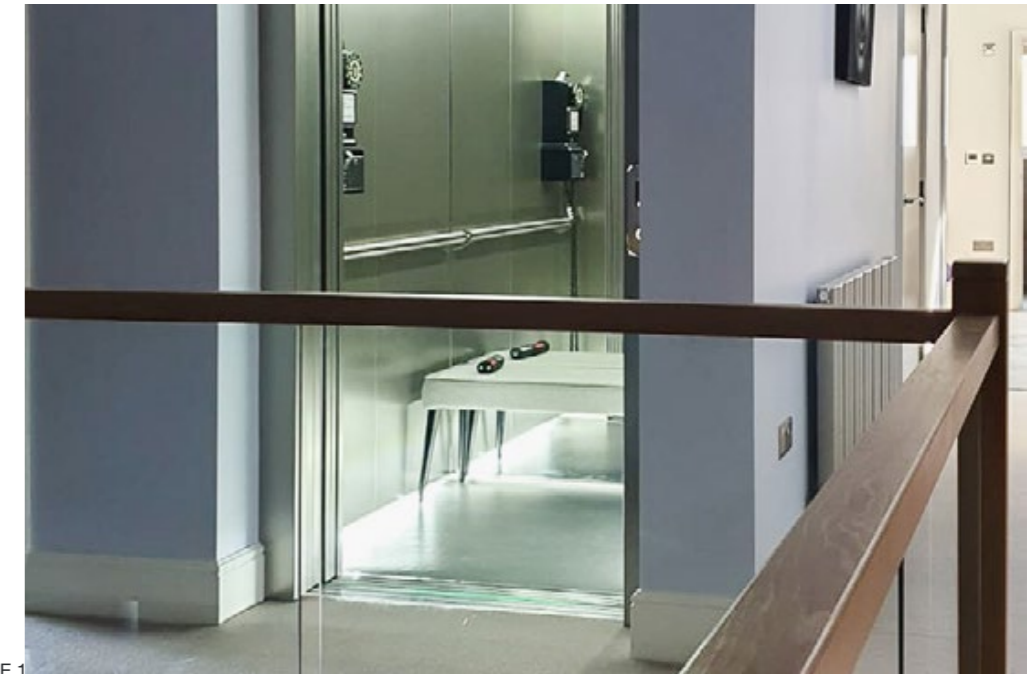


## SIMPLE INSTALLATION

Installation is simple as building work is minimal, just a low pit is required, and headroom requirements are very low. We work to provide a speedy installation, with minimal interference to your building or the surrounding area, making sure that you get to carry on with your daily life.

## INSTALLATIONS IN HOMES ACROSS THE UK

Premier takes a personal approach to each project. From bespoke technical drawings to swift and tidy installation, we strive to ensure that all your requirements and ideas are reflected in the finished product.





## SERVICING & WARRANTY

Premier offer a 12 month warranty (including parts) with 2 service visits annually as standard. For extended warranty options and more information please contact our sales team.



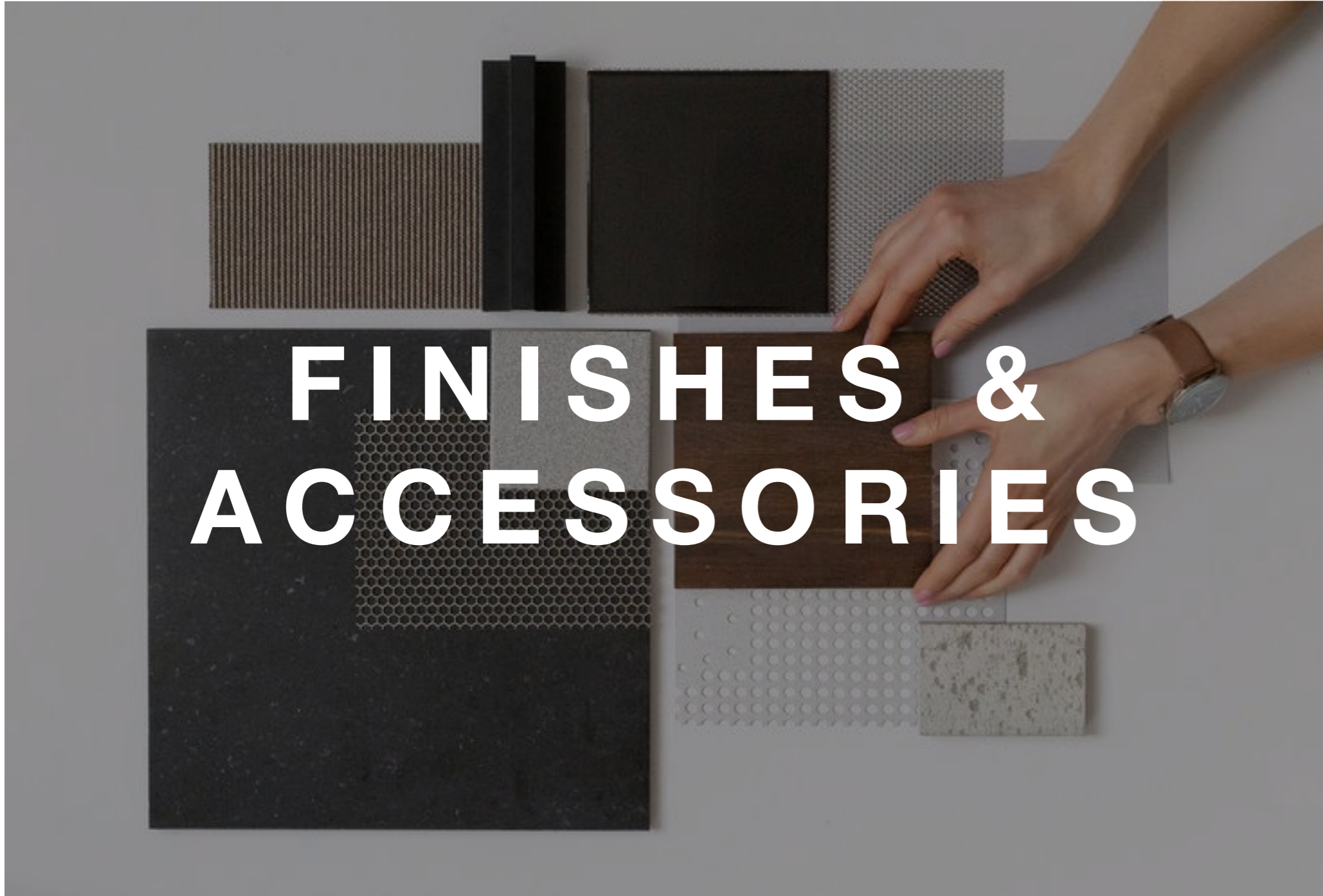
## PREMIER BOOK A NO OBLIGATION CONSULTATION

Start a conversation with Premier today, we will assess your requirements, talk through our available options and ensure we meet your lift solution needs.

0203 355 0523 - London  
0161 820 3716 - Manchester

info@premierliftgroup.co.uk

www.premierliftgroup.co.uk



## FEATURES AND TECHNICAL DATA



### ELECTRIC HOME LIFT

The eco-friendly choice is an oil-free system, with a unique project on the market, thanks to mrl technology (machine roomless, no extra space required beyond the shaft).



### SAFETY DEVICES AND BATTERIES

Full-height photocell barriers, back-up batteries to return to the landing and open the doors in case of electric power failure: the technical features are the best of the state of the art.



### COMFORT AND SILENCE

The inverter provides a gentle and controlled departure and arrival. Travelling in comfort, home lift is truly quiet: all the construction details, such as the low placement of the motor, the quality of the cabin structure and the door mechanism are designed to reduce vibrations and keep noise to a minimum, for quality that lasts over time.



### UPGRADE

The ECO lift is designed to last over time. That is why all the cabin details are designed to allow upgrades in the finishes, replacements of parts, or the implementation of materials without having to disassemble the entire system: a great benefit for the whole family, or in a public space with the option of adding value and customization easily and safely.



### FAST INSTALLATION AND MAINTENANCE

From the packaging to the pre-wiring, every step is dedicated to focusing on the quality of the installation. In the case of two stops in a masonry shaft, it can be installed in less than three days. The lift is designed to ensure simplicity of maintenance, which can be carried out directly from inside the cabin.

### GENERAL FEATURES

TRACTION ENGINE	1,5 kW - 220 v 50 hz
BELT DRIVE, FOR A SMOOTH AND SOFT MOVEMENT	
AUXILIARY SUPPLY VOLTAGE	24 V
LOAD CAPACITY	UP TO 400 kg
HEAVY LOAD VERSION LOAD CAPACITY	UP TO 500 kg
SPEED	UP TO 0,15 m/s
VERSION HS (EXTRA EU) SPEED	UP TO 0,26 m/s
TRAVEL	MAX 14,6 m
ACCESS N °6 MAX, ON FLOOR N ° 2 MAX	

ARRIVAL AT THE FLOOR AND SOFT STOP WITH THE "SOFT START/STOP" SYSTEM	
ELECTRICAL SAFETY LOCKS	
FLOOR CALL CONTROLS WITH "SIMPLE TOUCH"	
MINIMUM HEADROOM	2450 mm
MINIMUM HEADROOM WITH ON DOOR CABIN	2600 mm
PIT MASONRY	120 mm
STEEL STRUCTURE	140 mm
STANDARD CABIN HEIGHT	2100 mm
DOORS HEIGHT	2000 mm

### INSIDE THE CABIN

INFRARED LIGHT BARRIERS ON THE ENTRANCE SIDES

DIALER TO COMMUNICATE WITH THE OUTSIDE

EMERGENCY BUTTON PROVIDED WITH SWING DOORS

OVER LOAD INDICATOR

CONTROL BUTTONS HEIGHT ACCORDING TO EN 81-41

MIRROR (OPTIONAL): ALWAYS FLUSH VERSION

HANDLE (OPTIONAL): AVAILABLE IN ROUND OR SQUARED VERSION



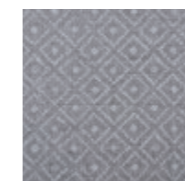
## CABIN WALL WITH BUTTON PANEL



ROBUR WOOD



FABRIC



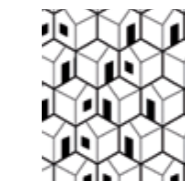
WHITE SQUARED



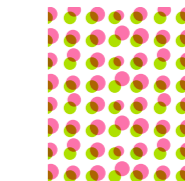
CLOUD



WHITE WOOD



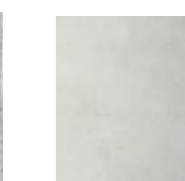
LITTLE HOMES



LITTLE ROUNDS



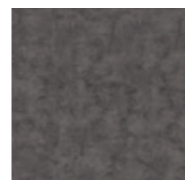
FENICE



FACTORY GREY



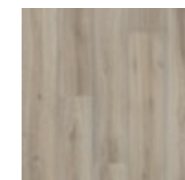
## CABIN PLATFORM



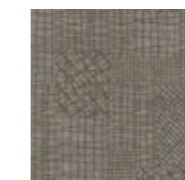
SMOOTH ANTHRACITE



GREY WOOD



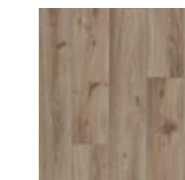
BLONDE WOOD



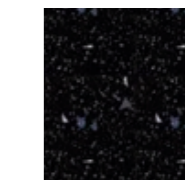
SMOOTH PALM



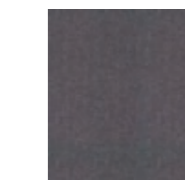
ARDESIA



NOCE WOOD



BLACK CHARCOAL



GREY FLOTEX SMOOTH

### CABIN STANDARD VERSION

ALL WALLS IN WHITE FINISHING

WALL WITH BUTTON PANEL IN WHITE WOOD (THE MOODS/INSPIRATIONS UPGRADE IS AVAILABLE)

BLACK MECHANICAL BUTTON PANEL WITH DISPLAY AND BRUSHED STAINLESS STEEL FRAME

BLACK CHARCOAL FLOOR

72 MILLION CUSTOMIZABLE LIGHTS

THE WALL ACROSS FROM THE BUTTON PANEL CAN HOLD THE FIVE LED STRIPS, THE MIRROR, GLASS AND HANDLE

A WALL ON THE SIDE OF THE BUTTON PANEL HOLDS THE FIVE LED STRIPS OR IT CAN HOLD THE MIRROR, GLASS AND HANDLE

**CONTROLS:  
FINISHES & OPTIONS**

**EXTERNAL BUTTON PANEL AT FLOOR**



TOUCH SCREEN  
WHITE DISPLAY

TOUCH SCREEN  
WHITE DISPLAY



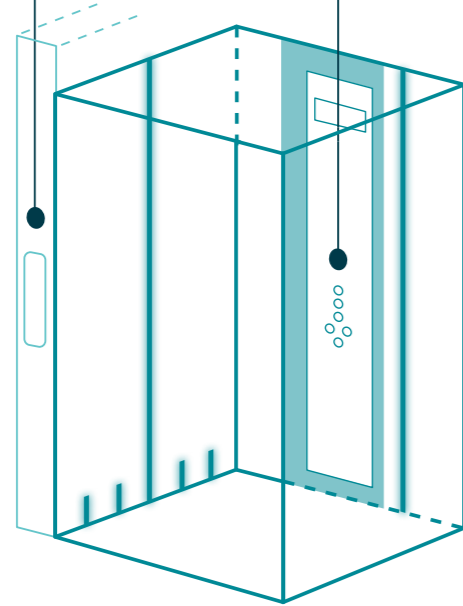
TOUCH SCREEN

TOUCH SCREEN

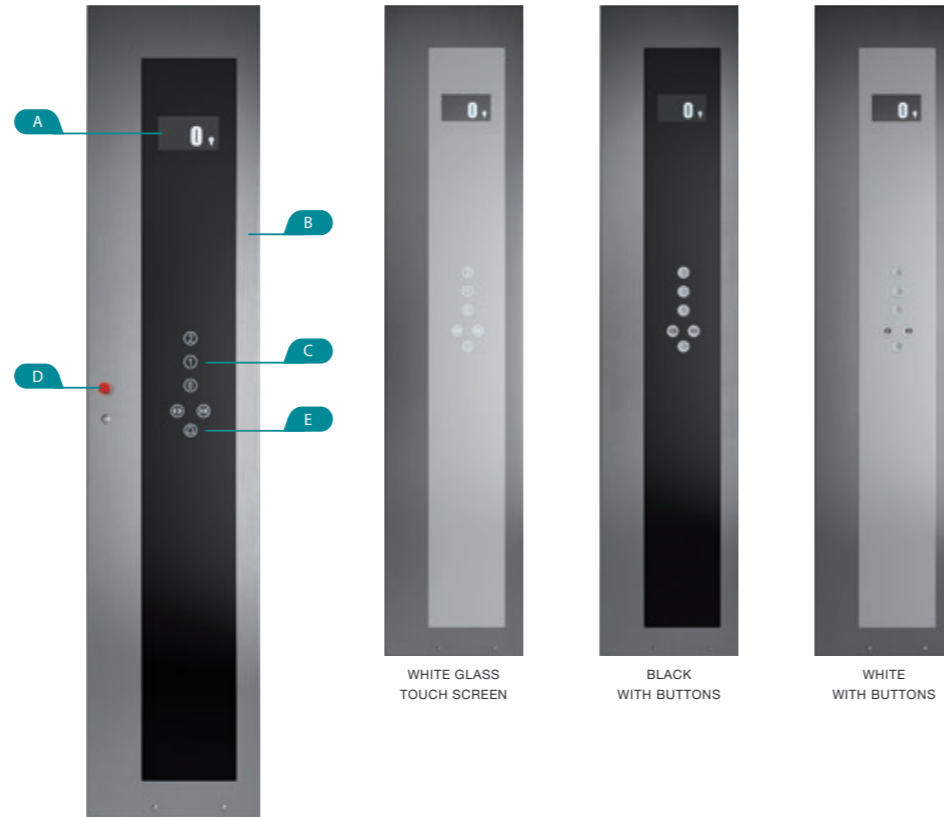


MADE OF STAINLESS  
STEEL WITH BUTTON

MADE OF STAINLESS  
STEEL WITH STANDARD  
BUTTON



**ON-BOARD BUTTON PANEL**



WHITE GLASS  
TOUCH SCREEN

BLACK  
WITH BUTTONS

WHITE  
WITH BUTTONS

BLACK GLASS  
TOUCH SCREEN

**TECHNICAL DATA ABOUT  
TOUCH BUTTON PANEL**

- A. DISPLAY TFT
- B. BRUSHED STAINLESS STEEL FRAME,  
TO GO WITH THE FLOWING LINES  
OF THE CABIN DESIGN
- C. TOUCH BUTTONS ON HI-TECH  
MIRRORED BLACK GLASS H
- D. RED STOP BUTTON
- E. TELEPHONE DIAL PAD

**LANDING & CABIN DOORS  
DIFFERENT DOOR  
OPTIONS FOR ANY  
SPACE**

Whether you are limited on space or require a certain aesthetic we provide a range of door options that offer different opening and usage. They can be configured with different finishes and RAL painted to match any environment.

Our telescopic doors are available with a smoke and fire rating of up-to 120 minutes under European standard. Our standard swing door has a rating (smoke and fire) of up to 60 minutes.



FIRE RATED



SMOKE RATED

**TELESCOPIC (LANDING & CABIN)**

AVAILABLE IN 2,3 AND 4 PANEL OPTIONS



TELESCOPIC WITH  
SOLID PANELS



TELESCOPIC WITH  
FRAMED GLASS



TELESCOPIC WITH  
PARTIAL FRAMED GLASS

**SWING DOORS (LANDING ONLY)**



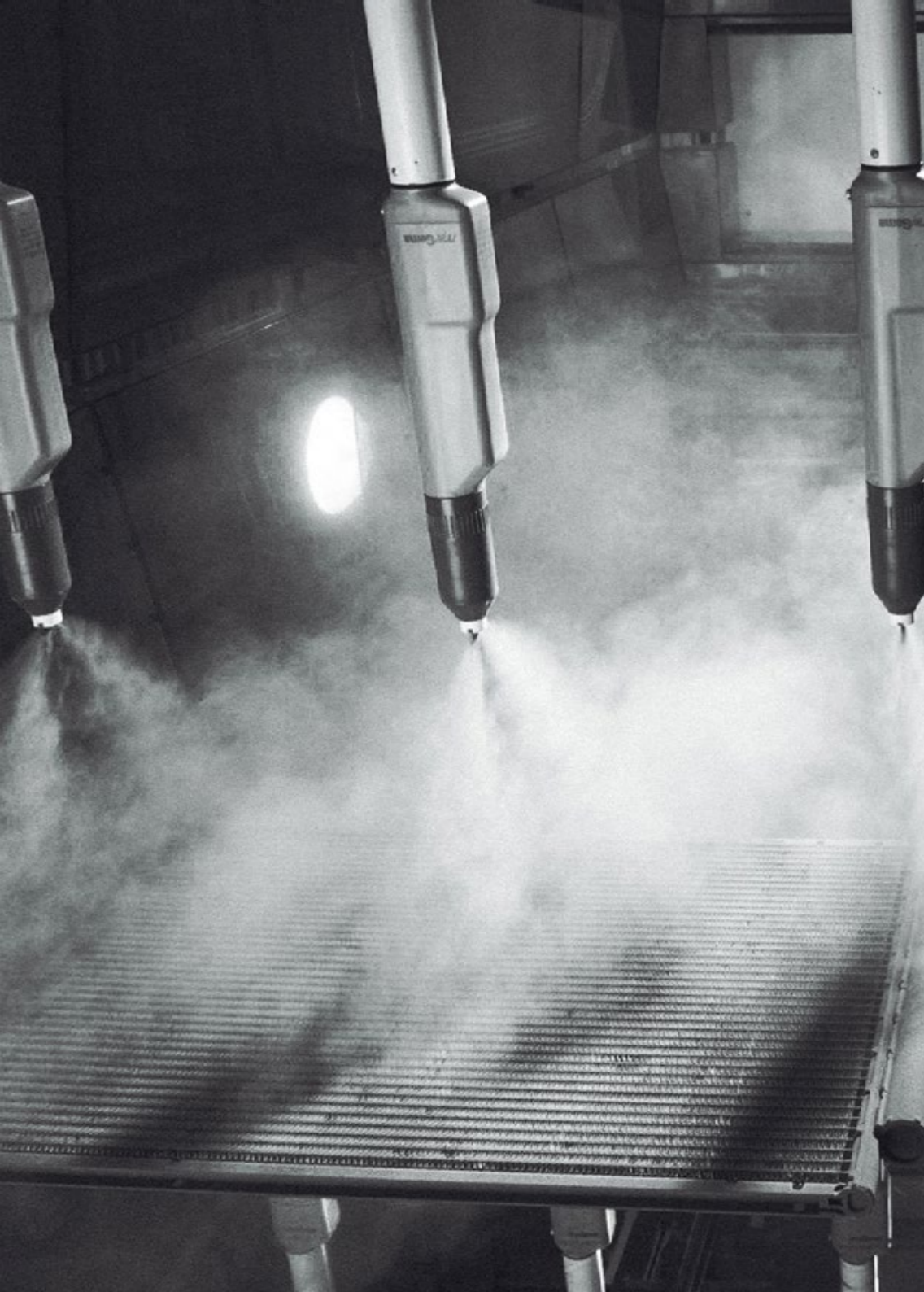
SOLID PANEL



VISION PANEL



LARGE VISION PANEL



DOORS & SUPPORTING  
STRUCTUTRE FINISHES

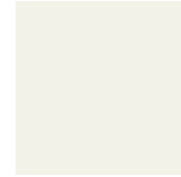
## EXPERT POWDER COATED SURFACES IN ANY RAL COLOUR



When a more specific finish is needed we offer electric powder coated RAL colours. Our powder coated surfaces can be more resistant to chipping, scratching, fading, and wearing than other finishes, meaning it is extremely durable. The process is also environmentally friendly as virtually no pollutants are released into the air.



### COLOURS OF LOAD-BEARING STRUCTURES



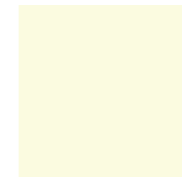
WHITE



7040 GREY  
STANDARD



7016  
ANTHRACITE  
GREY



1013 IVORY



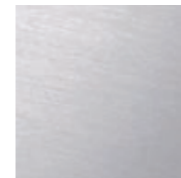
9023 PEARL  
DARK GREY



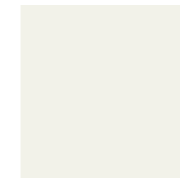
SPECIAL RAL



### CABIN DOOR



INOX



WHITE



7040 GREY  
STANDARD



SPECIAL RAL

## HANDRAILS



HANDLE WITH  
ROUNDED CORNERS  
(OPTIONAL)



SQUARE HANDLE  
(OPTIONAL)

## DIMENSIONS & OVERALL SPACES

The ECO + lift cabin be designed to meet your exact requirements. Please contact a member of our sales team for more information.

### METAL STRUCTURES FOR EXTERIORS

THE HOME LIFT SOLUTION IS AVAILABLE BOTH FOR MASONRY SHAFTS OR WITH METAL STRUCTURES SUPPLIED DIRECTLY BY VIMEC. VIMEC HOME LIFTS CAN BE INSTALLED BOTH INSIDE A HOME AND OUTDOORS.

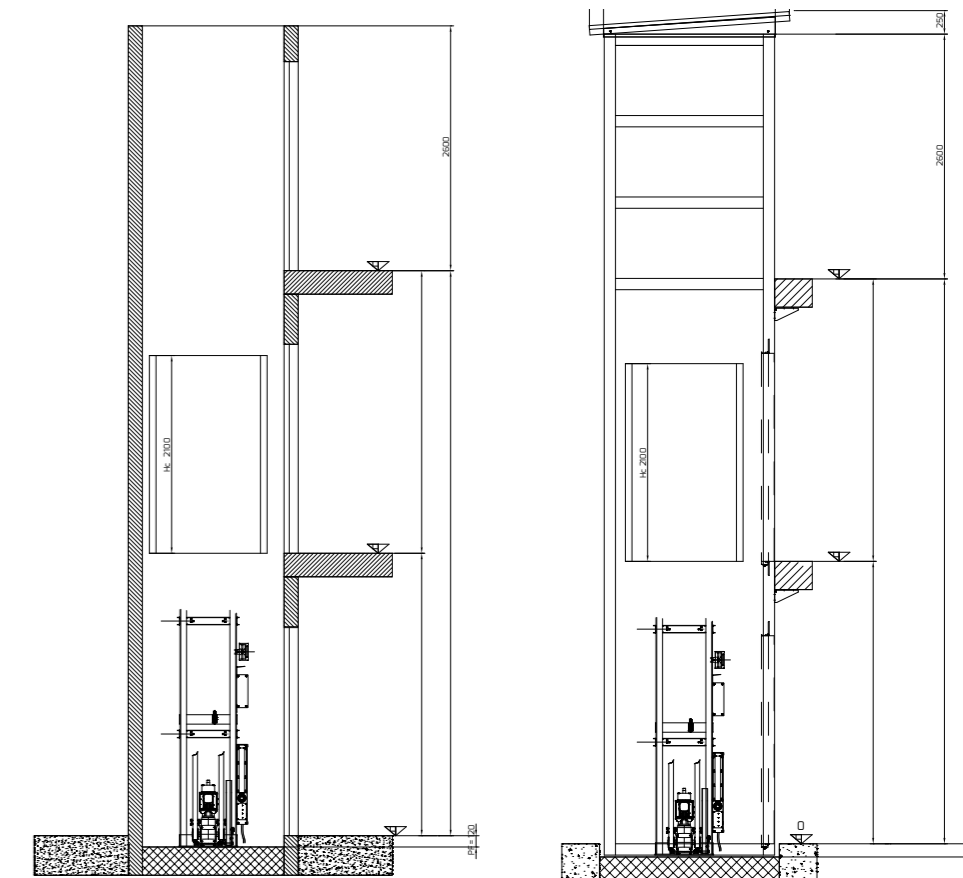


### PLATFORM SIZES (IN mm, FLOOR SURFACE)

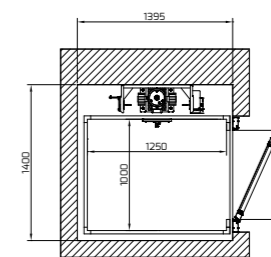
#### STANDARD

900X800	900X900	1000X900	1000X1000	900X1400
1100X1400	1250X800	1250X1000	1400X900	1400X1140

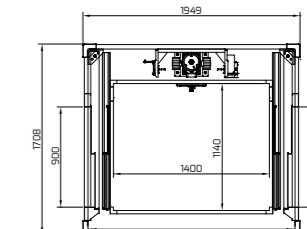
THE SIZES AND THE FINISHES OF WALLS AND CABIN PLATFORMS CAN BE FULLY CUSTOMIZED.



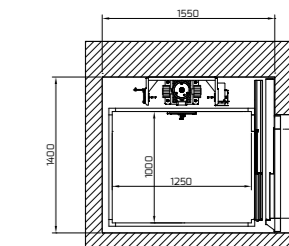
### MASONRY SHAFT



### STRUCTURE



### WITH TELESCOPIC DOORS



# PREMIER



0203 355 0523 - London  
0161 820 3716 – Manchester



[info@premierliftgroup.co.uk](mailto:info@premierliftgroup.co.uk)



[www.premierliftgroup.co.uk](http://www.premierliftgroup.co.uk)