



VPL CUSTOM STAIR LIFT

PREMIER





VPL CUSTOM

With class leading design and highly customisable, these low rise wheelchair lifts are a popular choice for many architects. Used for transportation of users with impaired mobility, this option comes with a vast range of specifications including full stainless steel and glass finishes.

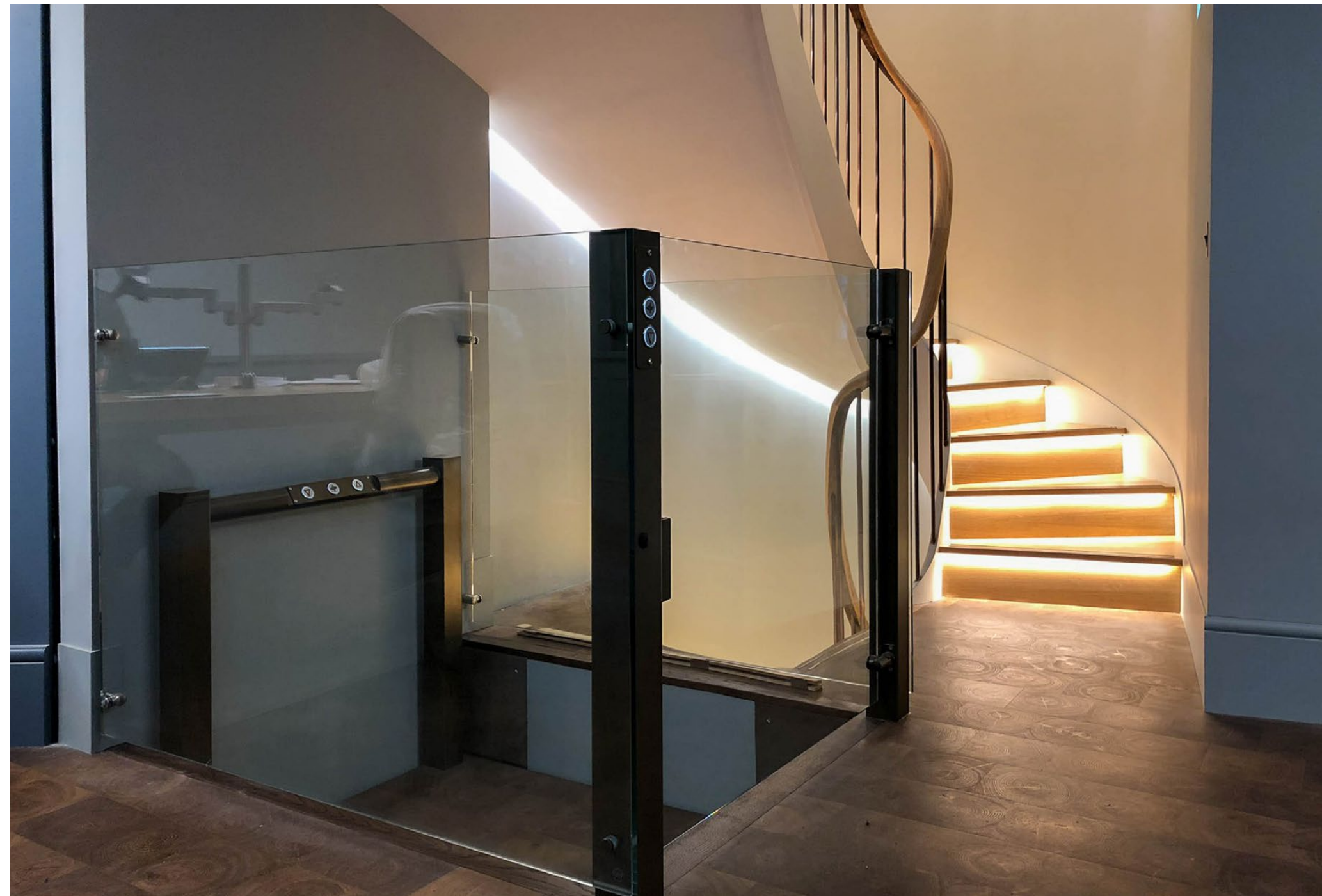
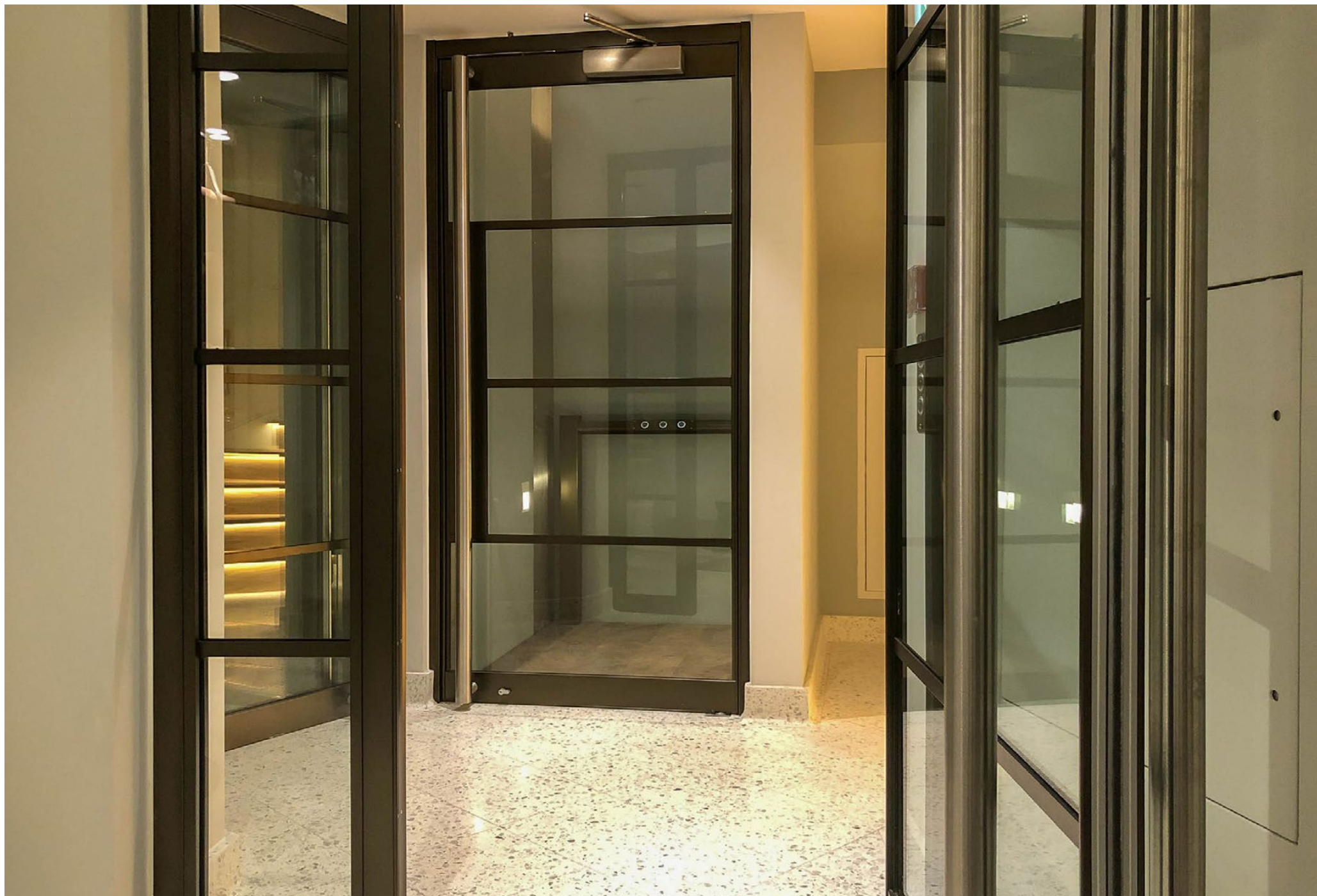


MINIMALIST DESIGN THAT CAN BE FINISHED TO SUIT ANY SPACE

The class leading aesthetics and the adaptability of these low rise lifts makes this range the obvious choice of many architects.

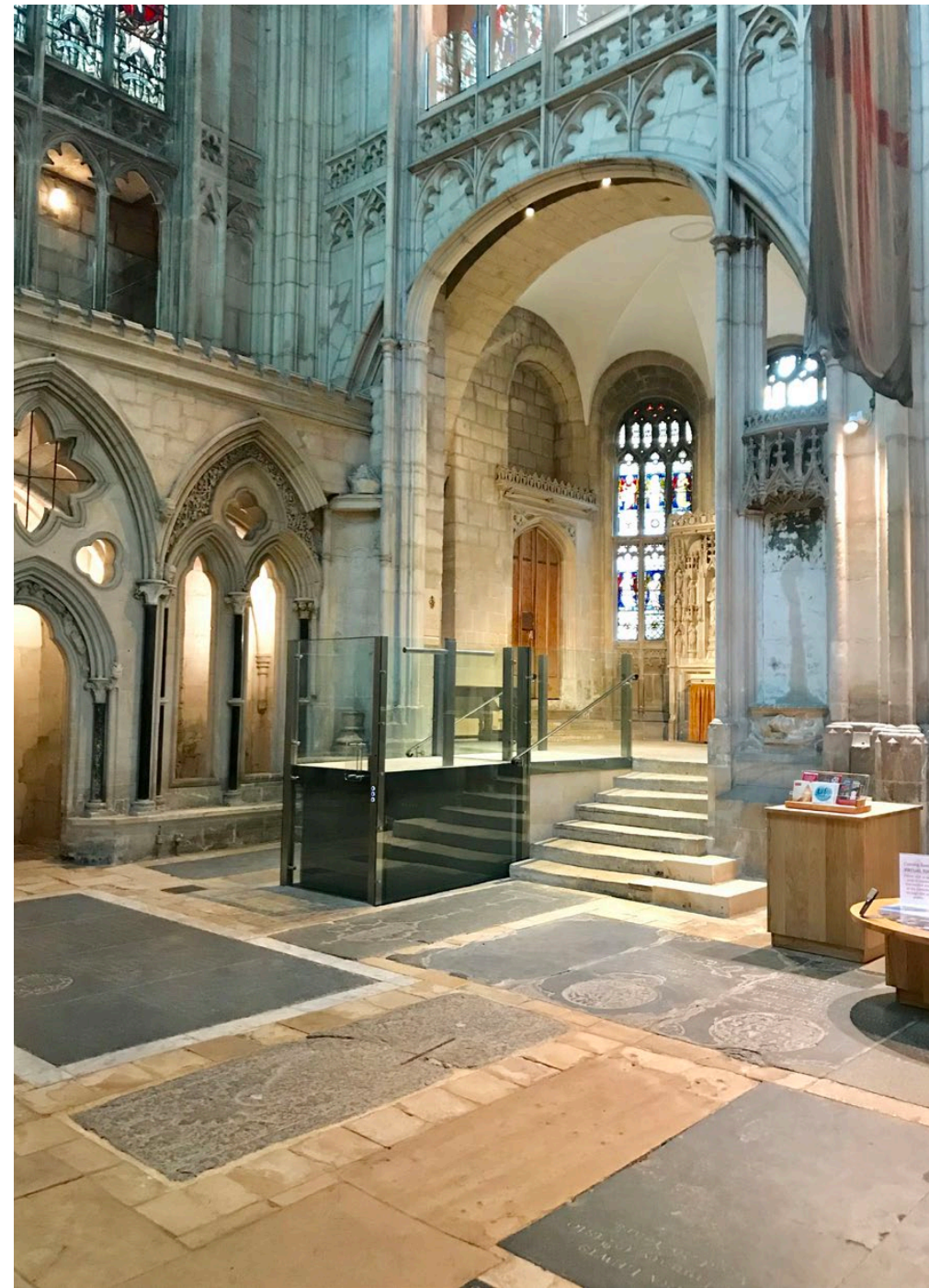
We work with the client, architect and interior designers to provide the right bespoke platform lift solution for your application. The raised height and platform size can be made to suit whilst remaining fully compliant.





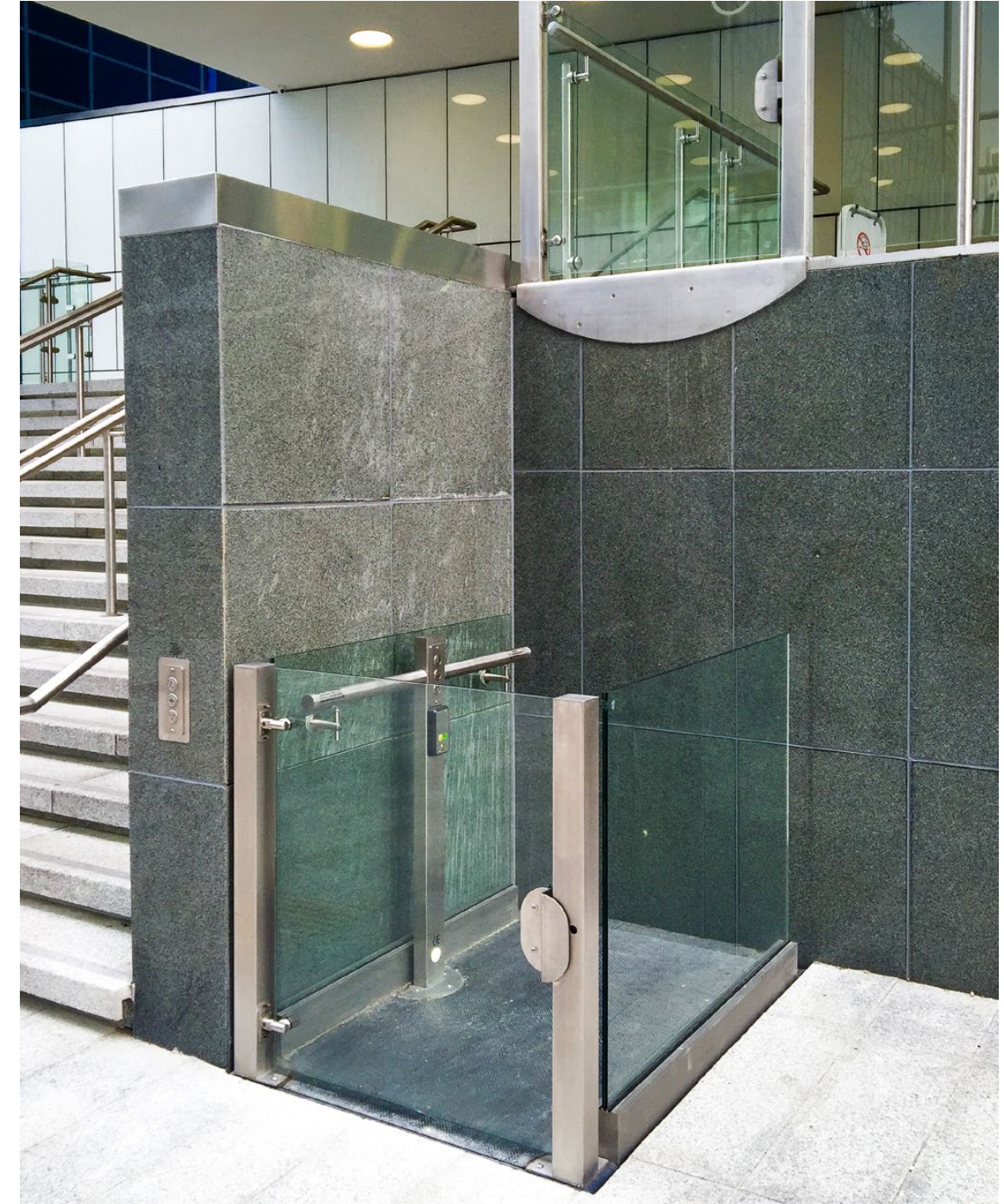
CUSTOMISABLE TO SUIT HISTORIC BUILDINGS

Our VPL Custom has been installed in cathedrals, castles, stately homes, abbeys, universities, theatres, grand residences, hotels, churches and blue plaque sites. These are amongst the very many historic locations in which our platform has been individually tailored to connect to the surrounding space.





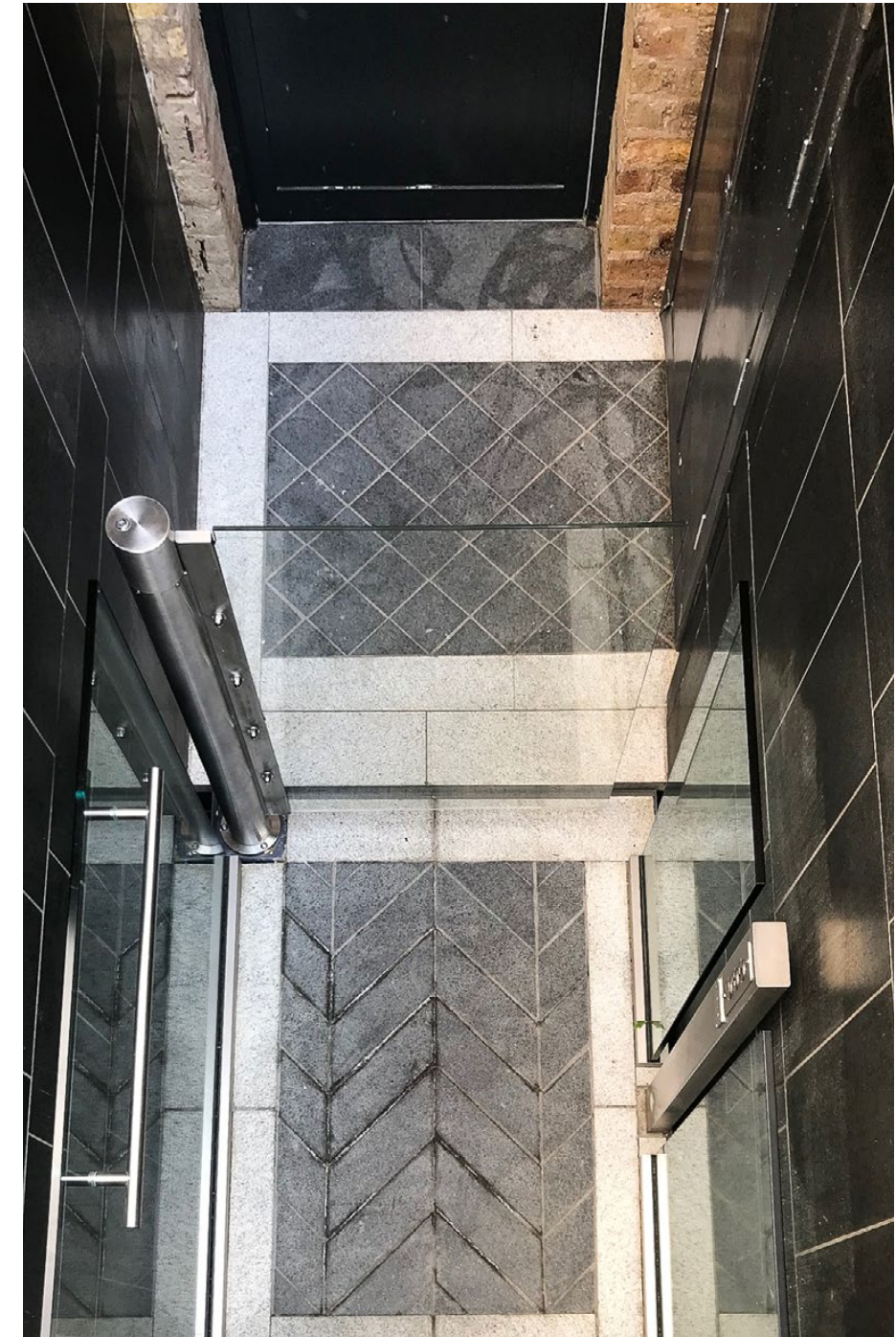
**SUITABLE FOR INDOOR
& OUTDOOR USE**



LIGHT WELL ACCESS

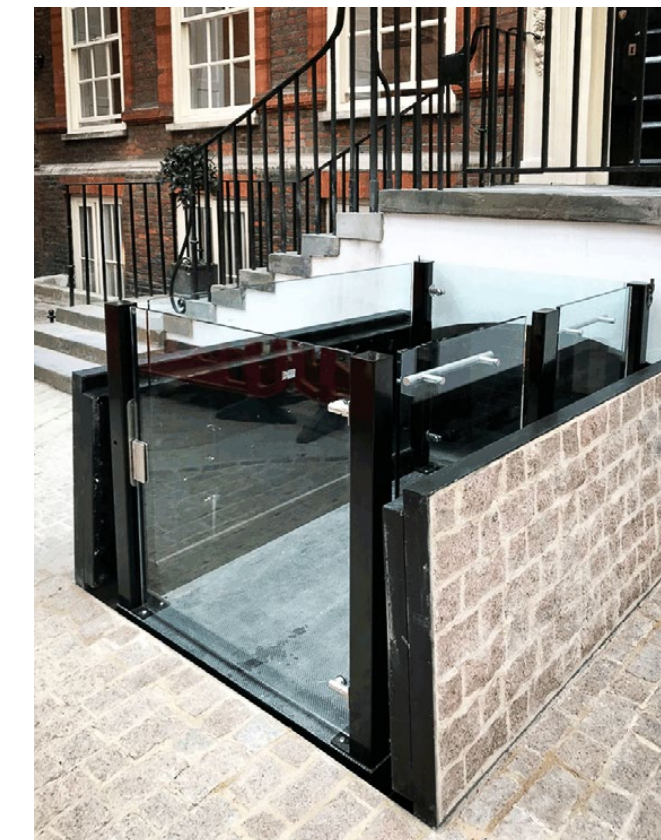
Lightwell lift solutions can provide exceptionally discreet method for safe, easy basement access. Basement lift systems for disabled people that are suitable for all types of lightwell basement including listed property including churches, castles and cathedrals.

Our lightwell lift solution could also be used to transport goods to make the very best use of this valuable basement space. Each lightwell lift has a 500Kg capacity and is very stable. Kitchen supplies, office supplies and all manner of goods can be safely and efficiently transported on the basement lift.



CONNEX HIDDEN LOW RISE DESIGN

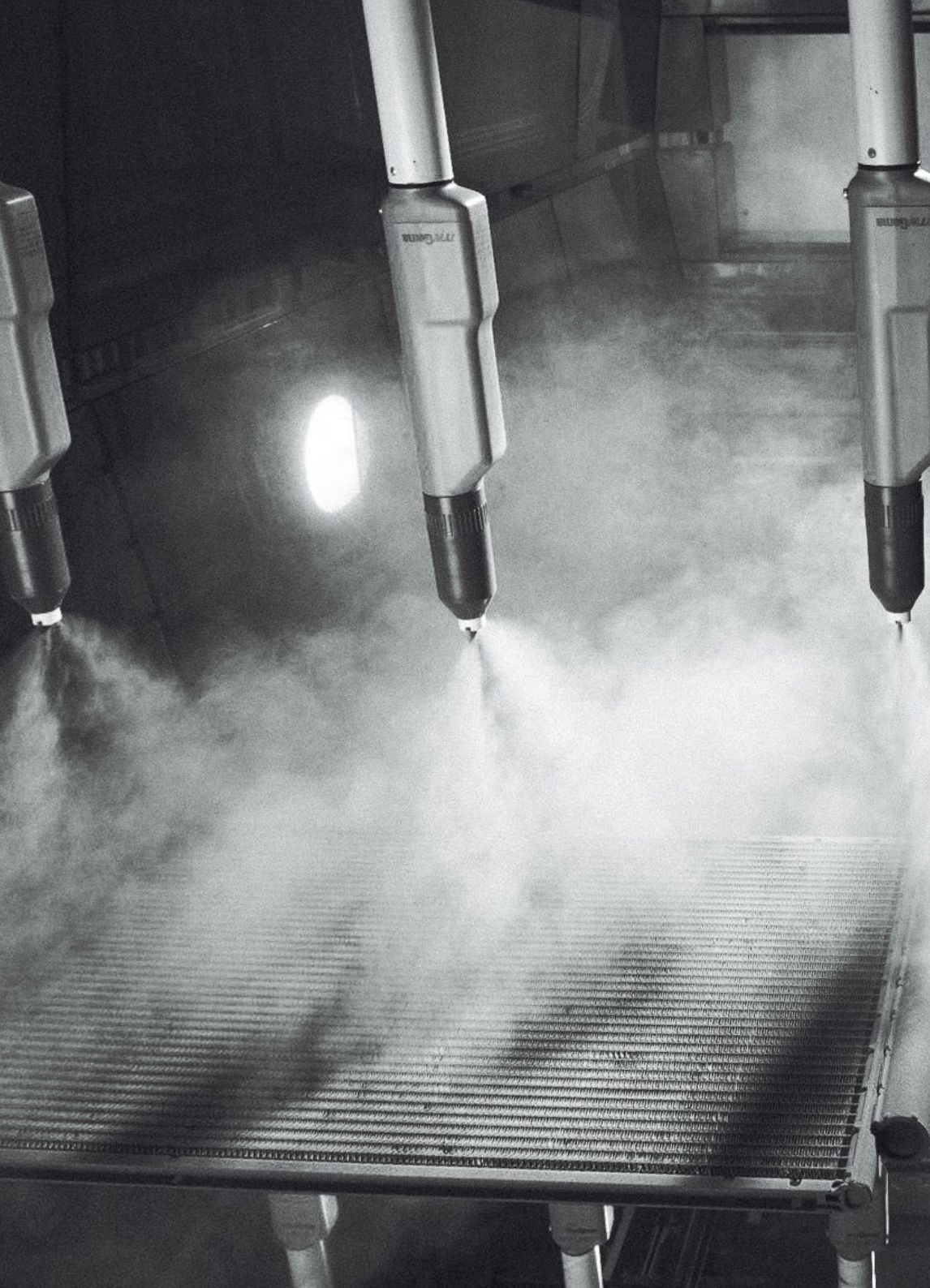
The Connex is your hidden solution for discreet access in prestige property. Connex is suitable for internal and external applications and is Machinery Directive compliant. These low visual impact lifts are perfect for most properties, they complement all architectural styles beautifully. The platform and side aprons can be finished with your choice of flooring – stone, tiles, timber and slate etc. When not in use Connex is virtually invisible.





**CONTROL PANELS BUILT
INTO THE LIFTS DESIGN
OR HOUSED IN THE
SURROUNDING SPACE**





EXPERT POWDER COATED SURFACES IN ANY RAL COLOUR

When a more specific finish is needed we offer electric powder coating on almost every available surface of the lift. Our powder coated surfaces can be more resistant to chipping, scratching, fading, and wearing than other finishes, meaning it is extremely durable. The process is also environmentally friendly as virtually no pollutants are released into the air.





SIMPLE INSTALLATION

Installation is simple as building work is minimal, for our VPL Custom. We work to provide a speedy installation, with minimal interference to your building or the surrounding area.

INSTALLATIONS ACROSS THE UK & IRELAND

Premier Lift Group takes a personal approach to each project. From bespoke technical drawings to swift and tidy installation, we strive to ensure that all your requirements and ideas are reflected in the finished product.



INDIVIDUALLY TESTED AND CALIBRATED BEFORE INSTALLATION

Engineers build your lift using hand-crafted methods and provide skilled support during the whole process.



TECHNICAL & INSTALLATION INFORMATION

PRE-INSTALLATION

1. All works must be completed prior to the commencement of lift installation. Failure to do so will result in additional costs being chargeable.
2. The pit must be flat/level and free from debris. The pit must be capable of supporting the full weight of the lift and it's load plus an overload factor.
3. Ensure that drainage is included for external applications or liable to flood (inc. floor cleaning etc).
4. The upper level gate threshold and fascia must be capable of supporting a 500Kg push/pull dynamic force distributed over the full surface area. The upper level gate will be affixed with a series of 50-100mm self-anchoring fixings -- the substrate must be suitable to accept these fixings.
5. There must be clear and unobstructed access to the point of installation at all times and a secure area shall be available adjacent to the installation for tools and equipment storage.
6. Sufficient lighting must be provided for duration of installation.

CONDUIT RUNS

1. The builder must provide both controls with a 25mm diameter conduit between the push button controls and the power pack location with a pull cord.
2. The builder must provide a 60mm diameter conduit between the pit base and the power pack location with a pull cord.

DURING/POST-INSTALLATION

1. Making good around the lift is the responsibility of the builder. There will be some gaps around the edges of the floors, doors and walls which will need to be filled after our installation is complete. Note: Do not drill or screw any fixings into the lift components.
2. The builder is responsible for suitably protecting floor and wall surfaces to prevent damage during positioning and installation.
3. Provide assistance with off-loading all of the lift equipment.
4. Provide a dry temporary secure storage area for the lift equipment during installation.
5. If necessary, ensure adequate access through the building into the working area.
6. The main contractor is to provide a skip or similar for all packaging/waste, our installers will remove the waste and place in the skip provided.
7. No other services to be permitted in the working area. Examples include water pipes and other electrics not relating to the lift.

PREMIER

**BOOK A NO OBLIGATION
CONSULTATION**

Start a conversation with Premier today, we will asses your requirements, talk through our available options and ensure we meet your lift solution needs.



0203 355 0523 - London

0161 820 3716 – Manchester



info@premierliftgroup.co.uk



www.premierliftgroup.co.uk