



BinScan

Quick Start Guide

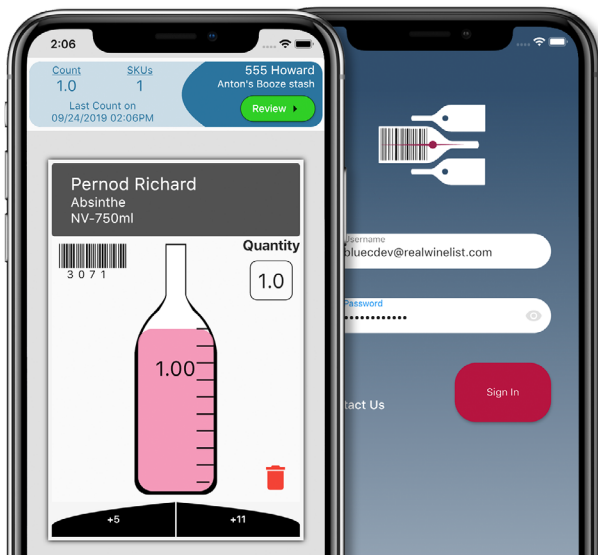
EN



Download on the
App Store



GET IT ON
Google Play





Using the BinScan Mobile App

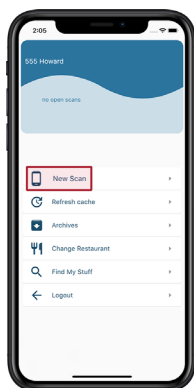
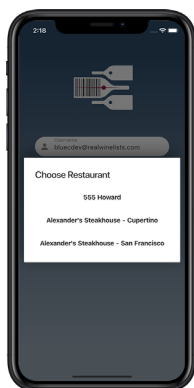
- The BinScan mobile app is free to use for BinWise customers and only takes a couple of minutes to set up.
- Follow the instructions below to get started.

1 Setup

- Download the BinScan mobile app.



- Login using your BinWise credentials and download inventory data.



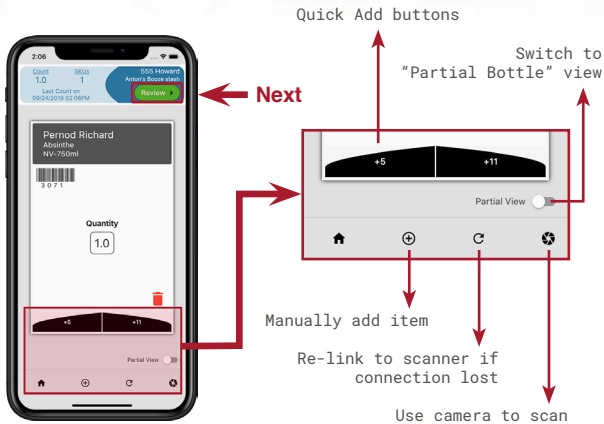
If you belong to more than one restaurant, select the restaurant whose inventory you would like to scan.

If you belong to only one restaurant, you'll be logged into that location automatically.

- Loading inventory data to your device can take up to 30 seconds depending on your inventory size.

2

Scanning

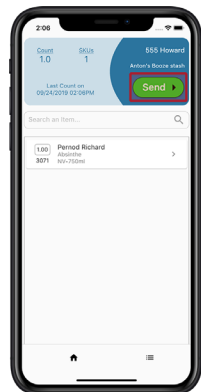


- The Quick Add buttons are contextual and will increase QTY to either a half or full-case size if the quantity is less than 6 or 12.
- You can enter partial bottle quantities manually by clicking QTY or using the slider by switching to Partial View and use the slider.

3

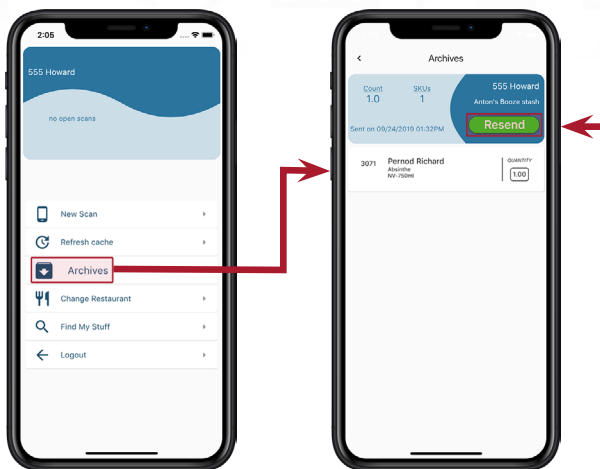
Reviewing

- In Scan mode, items are displayed in order scanned. In Review mode, items are aggregated by barcode. Tapping on item detail will show the individually scanned items.
- Review and edit before sending the data.



4

Archiving



- Once uploaded to BinWise, scan files are saved to the Archives section of the app.
- If you need to re-send the scan files to BinWise, you can open Archives and re-upload the files.



Using the BinScan Mobile App with a Barcode Scanner

- The BinScan mobile app can be paired with a barcode scanner for 4 times faster inventory scanning compared to using the mobile app and your iPhone or iPod Touch camera.
- We recommend the Socket Scan S740 for best results.





Setting up your Barcode Scanner

- By default, the scanner will both Vibrate and Beep with every successful scan. You can change these settings by scanning the codes below.
- All configurations should be made before pairing your scanner with your smart device.

Scan to turn Beep on



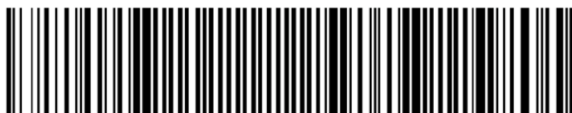
#FNB01190E000100030078004B#

Scan to turn Beep off



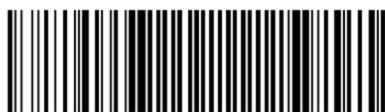
#FNB01190E000100000078004B#

Scan to turn Vibration on



#FNB01310001000100FA0000#

Scan to turn Vibration off



#FNB013100010000#



Pairing your Barcode Scanner with your Mobile Device

- Once your scanner is configured, you can pair it with your smart device by scanning the appropriate barcode below.

Scan if Pairing with an iOS Device



#FNB00F40002#

Scan if Pairing with an Android Device



#FNB00F40003#

Follow the steps below to complete the pairing process:

1 Turn on your scanner by holding down the power button until you hear the Low-Hi beep set and your battery light changes from flashing red to solid green.

2 If your scanner has not been paired with a device before, the scanner will already be in Bluetooth Pairing mode—this is indicated by a flashing blue Bluetooth light. If the Bluetooth light is solid or off, this indicates that your scanner has already paired with another device and will need to be paired again with your device.

- First, turn off the scanner by holding down the power button. You will hear a Hi-Low beep set and the lights will go off. To put the scanner in pairing mode, Press both the Power Button and the Scan button concurrently—this will set the scanner to pairing mode once it turns back on. This will be indicated by a flashing blue Bluetooth light, once the power-on light has changed to green.

3 On your mobile device, go to Settings ➔ Bluetooth and scroll to the bottom of the screen. Select Socket S740 [XXXXXX] (X=last 6 digits of your device's serial number). Your mobile device will pair with the scanner.

You can now launch the BinScan mobile app and start scanning!



Unpairing your Barcode Scanner and Mobile Device

- Each barcode scanner can be paired with one mobile device at a time. To share a barcode scanner among multiple employees (and their respective mobile devices), you will have to unpair from each device before pairing it with the next one.
- Follow the steps below to unpair your barcode scanner from your mobile device:
 - 1 On your mobile device, go to Settings ➔ Bluetooth.
 - 2 Find the entry for S740 [XXXXXX] (X=last 6 digits of your device's serial number)
 - 3 Tap on the info bubble (little icon with "i")
 - 4 Tap on Disconnect
 - 5 If you're done scanning for this inventory cycle, or if someone else needs to pair their device with the scanner, select "Forget This Device". You will need to go through the Pairing process the next time you use the device.
 - 6 Power down the scanner



Resetting your Barcode Scanner

- If you need to factory reset your barcode scanner, scan the barcode below.



#FNB00F0#



Using Other Unrecommended Barcode Scanners

- While it is not recommended, it is possible to use other barcode scanners with the BinScan mobile app. Please note these scanners are not officially supported and may not perform in an optimal way.