



COMMERCIAL INDUSTRIAL BI-FOLD DOORS TECHNICAL DATA



Glideaway Door Systems

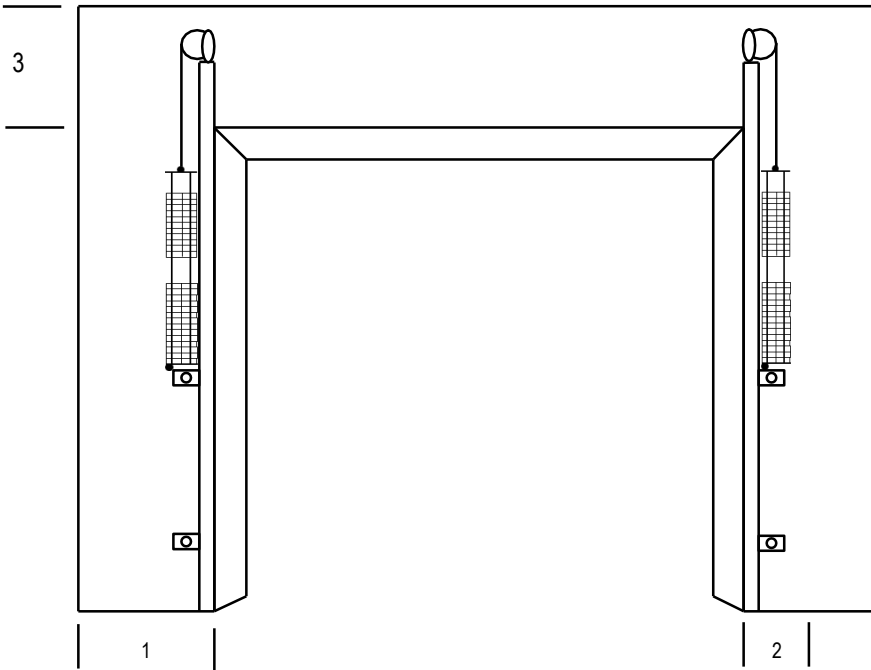
Manufacturers, Importers & Distributors of Residential, Commercial & Industrial Door Systems

New Zealand Wide Sales & Installations

Freephone: 0508 611 166 Freefax: 0508 356 111

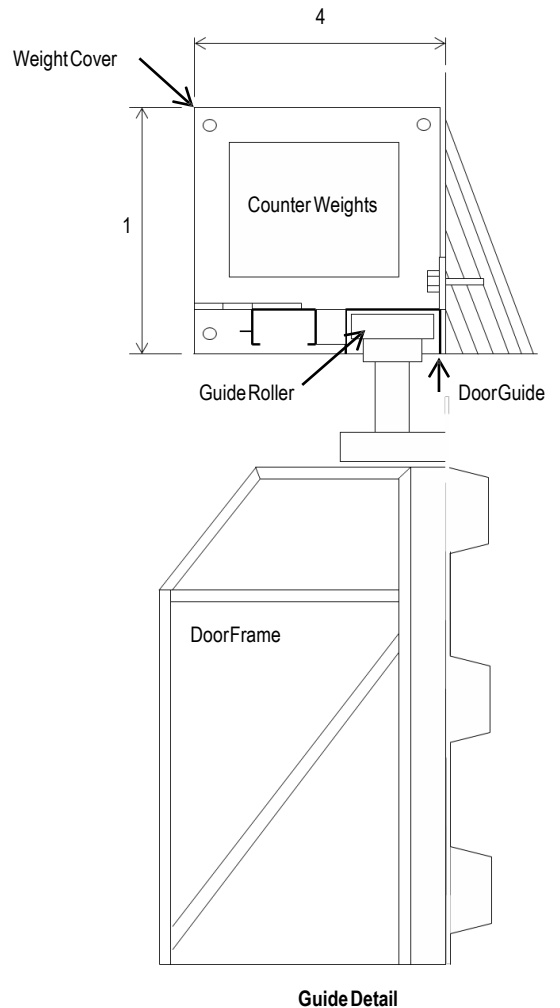
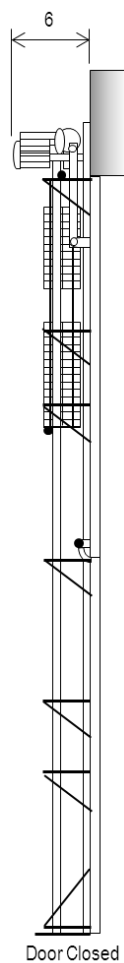
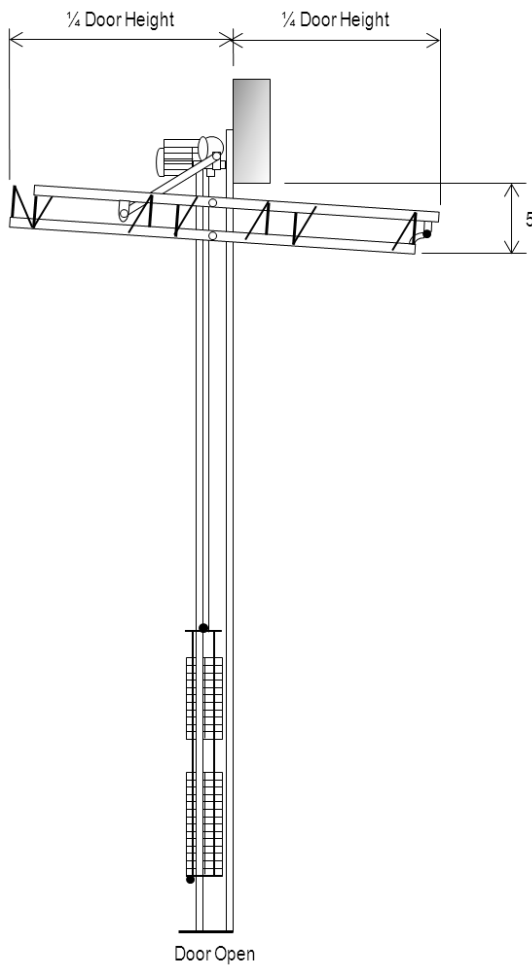
PO Box 99, Feilding 4740 sales@glideaway.co.nz www.glideaway.co.nz

GDS BI-FOLD DOORS TECHNICAL DATA



NOMINAL DIMENSIONS

- 1 = Minimum sideroom 300mm
- 2 = Minimum solid fixing 150mm
- 3 = Headroom 350mm
- 4 = No more than 500mm (depending on door size)
- 5 = Up to 15m wide is 400mm
Up to 20m wide is 600mm
Up to 25m wide is 700mm
Up to 30m wide is 900mm
- 6 = Motor projection 600mm



GDS BI-FOLD DOOR SPECIFICATIONS

OPERATION:	Two leaves fold horizontally at centre of door. Both leaves are counter weighted and under constant suspension. Both leaves are guided by rollers in the doorguide.
FRAME:	Side styles manufactured from heavy RHS and engineered to comply with wind loading applicable to the door installation. Galvanised steel to be used where possible in accordance with AS/NZ 4600.
WIRE ROPES:	Heavy duty galvanised wire used on all doors.
DOOR GUIDES:	Door guides manufactured from galvanised steel where possible and in accordance with standards as specified with the frame. Door guides are self supporting and fixing is by welding or bolting depending on the structure. Concrete is to be thicker under the tracks to support the door weight.
COUNTERWEIGHTS:	Weights are cast iron blocks of 7.4kg each. The weights equal the door weight and are enclosed in a steel frame which is guided up and down the door columns as the door is opened and shut.
COUNTER WEIGHT COVERS:	Covers are folded from galvanised sheet and run the full length of the door guides. These are removable for easy maintenance
SEALS:	100mm brush seals used around the perimeter of the door to provide a weather seal and protection from birds and rodents
CLADDING:	Cladding is client specified, but must be fixed in accordance with all local/governing bodies codes. Glazing to be in accordance with overhead glazing codes.
MANDOORS:	Man doors can be incorporated into designs depending on cladding and frame configuration.
ACTIVATION:	All doors can be manually operated or be fitted with an electric motor. Manually operated doors can be operated using a hand chain. Motorized doors to have a Grifco/Maestro 3 phase operator with a standard up-down wall button. All motorized doors to have an emergency hand chain in case of power failure. Different activation options available.
LOCKING:	Manual doors to have standard pad bolt locking on each side of the door. Chain operated and motorized doors have no locks
WINDLOADING:	All doors are designed and manufactured to withstand 0.85kpa. The structure that the door is fixed to is designed by others. Windloading in some cases is site specific and doors are designed and manufactured accordingly.



Glideaway DoorSystems

Manufacturers, Importers & Distributors of Residential, Commercial & Industrial DoorSystems

Freephone: 0508 611 166 Freefax: 0508 356 111

PO Box 99, Feilding 4740 sales@glideaway.co.nz www.glideaway.co.nz