



Corporate Hydration

Bottle Fillers, Pressure Coolers & Fountains







CONTENTS.

Hydration	1
OASIS is There!	3
Bottle Fillers & Fountains	5
Bottle Fillers	7
Free Standing Coolers	9
Fountains	11
Technical Specifications: Bottle Fillers, Pressure Coolers & Fountains	13
Prominent Placements	20
Antimicrobial Protection	21
Filters	23
Point-of-Use & Bottled Water Coolers	25
Support After The Sale	27

HYDRATION.

Sustainability goals are a fact of corporate life, as companies become conscious of their impact on the environment and its precious resources. There are major financial incentives, too. Thoughtful, judicious use of utilities is almost always a significant part of these goals, but water is often forgotten about.

Water efficiency credits are necessary for BREEAM (Sustainability assessment method for master-planning projects, infrastructure and buildings), and water is also vital to virtually every business as necessary fuel for your workforce. Well-hydrated employees are more productive. They are more focused, suffer less fatigue, and get more done. Poor hydration, sometimes suffered by workers, can cause energy-sapping symptoms like headaches and dizziness and can send productivity plummeting.

Proper hydration matters for your workforce. So an investment in plentiful fresh drinking water is an investment in your bottom line.



SUSTAINABILITY PAYS

Manage Your Risk:

Risk-related sustainability issues can affect as much as 70 percent of earnings before interest, taxes, depreciation, and amortization.

*Thoughtful water usage plays a critical role in meeting sustainability goals.



At only a fraction of a cent per serving, OASIS® water systems are the LOWEST-COST amenity you can give to workers.

OASIS have been leaders in environmentally responsible practices since our start more than 100 years ago.

- Water conservation efforts are a significant factor in achieving BREEAM status (sustainability assessment method for master-planning projects, infrastructure and buildings).



WE ARE MOSTLY WATER

The human brain is about 70% water and the body is approximately 60%.

This is why adequate hydration is so important throughout the workday. Whether your brain is thinking or your body is labouring, water is the ultimate tool for success.

OASIS IS THERE!



Today's workers aren't tied to the office anymore.

Wherever they roam, OASIS is there with a hydration solution, tailored to their needs.



Company Gym

Bottle fillers are a must. We have retro kits that easily convert drinking fountain into an OASIS Drinking Fountain with Bottle Filler combo. If access to plumbing lines is a problem, we have a variety of bottle cooler options that also accommodate today's taller sports bottles.

Remote Job Site

Don't forget about employees who work at remote job sites or deep in manufacturing or warehouses. These workers are the engine of your organization. Hydration-on-location makes life easier in work trailers or other remote areas.

BOTTLE FILLERS & FOUNTAINS.

The following models have / are:



Key AquaPointe bottle filler molded components contain Freshield® which utilizes a silver-based antimicrobial compound that reduces the growth of micro-organisms and mildew to protect the surfaces from discoloration, odors and degradation.



By being ADA compliant, OASIS ensures that our products are accessible to people with disabilities.



OASIS has the only EPA-registered, antimicrobial copper touch points for its comprehensive line of water coolers and fountains.



electronic VersaFiller sports bottle fillers and retrofit kits.

VersaFiller PEBFY - Electronic

Also available in:

Electronic

- P8EBFY
- PEBFY

Manual

- PG8SBFY
- PGSBFY

Electronic Vandal Resistant

- PV8EBFY
- PVEBFY

Manual Vandal Resistant

- PGV8SBFY
- PGVSBFY

Standard Features

- Delivers 60 liters of chilled drinking water an hour
- Electronic VersaFiller bottle filler and barrier free VersaCooler II drinking fountain combo
- Built-in 100 micron strainer stops particles before they enter the waterway
- Waterways are lead-free in materials & construction
- Stainless steel top
- One piece, low flow, flexible bubbler guard
- Heavy duty galvanized steel frame
- Four push pad manual activation on water cooler
- External stream height adjustment on cooler
- Hands free bottle filler with programmable shut off timer
- Integrated bottle counter and filter monitor



*Also available with sandstone finish and copper top and nose.

VersaFiller PEBFSLY - Electronic

Electronic

- P8EBFSLY
- PEBFSLY

Also available in:

Manual

- PG8SBFSLY
- PGSBFSL

Electronic Vandal Resistant

- PV8EBFSLY
- PVEBFSLY

Manual Vandal Resistant

- PGV8SBFSLY
- PGVSBFSL

Standard Features

- P8EBFSLY delivers 60 liters of chilled drinking water an hour
- Electronic VersaFiller bottle filler and barrier free VersaCooler II drinking fountain universal split-level combo
- Built-in 100 micron strainer stops particles before they enter the waterway
- Waterways are lead-free in materials & construction
- Stainless steel top
- One piece, low flow, flexible bubbler guard
- Heavy duty galvanized steel frame
- Four push pad manual activation on water cooler
- External stream height adjustment on cooler
- Hands free bottle filler with programmable shut off timer
- Integrated bottle counter and filter monitor
- Universal split-level: can be installed left high and right low or right high and left low

AQUA POINTE VersaFiller Retrofit Kit PWEBFY - Electronic

Electronic

- PWEBFY

Also available in:

Manual

- PWSBF

Standard Features

- Stainless steel finish
- Waterways are lead-free in material & construction
- Heavy duty steel frame
- Surface mount frame assembly
- Hands free bottle filler with programmable shut off timer for electronic model only
- Integrated bottle counter and filter monitor for electronic model only



BOTTLE FILLERS.

The following models have / are:



**electronic AQUA POINTE sports bottle fillers
and sports bottle filler & radii combinations.**



AQUA POINTE PWSMEBFY - Electronic Surface Mount

Also available in:

Electronic

- PWSMEBFY

Manual

- PWSMSBF

Standard Features

- Surface mount
- Electronic (hands free) for electronic model only
- Sports bottle filler
- Integrated bottle counter & filter monitor for electronic model only
- Built-in 100 micron strainer stops particles before they enter the waterway
- Waterways are lead-free in materials & construction
- Heavy duty steel frame
- Space saver
- Available with optional RLF8Y chiller*
- *Drain required



AQUA POINTE MSBFY - Manual

Codes

- M8SBFY
- M12SBFY

Also available in:

Electronic

- M8EBFY
- M12EBFY

Standard Features

- M8SBFY delivers 60 liters of chilled drinking water an hour
- M12SBFY delivers 90 liters of chilled drinking water an hour
- Manually Activated AQUAPOINTE Sports Bottle fillers and Radii Combination
- Built-in 100 micron strainer stops particles before they enter the waterway
- Waterways are lead-free in materials & construction Heavy duty steel frame
- Flexible one piece water saver bubbler
- High efficiency cooling tank and coil
- Refrigerant R-134a
- Built in panel locks for easy access to chiller and filtration



AQUA POINTE MCRSBF - Manual

Codes

- M8CRSBFY

Also available in:

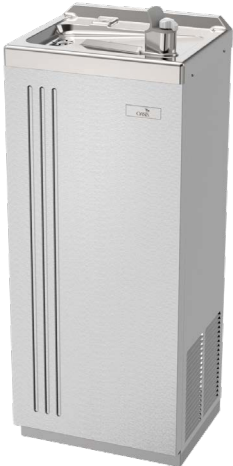
Electronic

- M8CREBFY

Standard Features

- M8CRSBFY delivers 60 liters of chilled drinking water an hour
- Manually Activated AQUAPOINTE Sports Bottle fillers and Radii Combination Bi-Level
- Built-in 100 micron strainer stops particles before they enter the waterway
- Waterways are lead-free in materials & construction Heavy duty steel frame
- Flexible one piece water saver bubbler
- High efficiency cooling tank and coil
- Refrigerant R-134a
- Built in panel locks for easy access to chiller and filtration

FREE STANDING COOLERS.



Special Application - Free Standing Drinking Fountain P16FAWHDCP

Code

- P16FAWHDCP

Standard Features

- Delivers 116 liters of chilled drinking water an hour
- Hazardous duty water cooler
- Waterways are lead-free in materials and construction
- Dial-A-Drink bubbler
- Stainless steel cabinetry
- Heavy duty galvanised structural steel frame
- High efficiency cooling tank and coil
- Internal air-gap provided on water-cooled condenser
- Special protective coating applied to compressor, condenser, cooling tank, pre-cooler, water drain and interconnecting water and refrigeration lines
- Refrigerant R134a

Special application water cooler designed for hazardous locations

This model is designed for installations where water cooling efficiency must be maintained under extreme environmental conditions and for use where hazardous atmospheres are present.

Ideal for use at oil-refineries and natural gas factories and other hazardous applications.

All controls and wiring are sealed in Underwriters' Laboratories (UL) listed enclosure to prevent ignition in explosive atmospheres.



COLARADO Free-Standing Drinking Fountain

Code

- P2KXY

Standard Features

- Delivers 20 liters of chilled drinking water an hour
- Stainless steel bubbler
- Stainless steel exterior
- Pressure vessel direct chill refrigeration
- Various green filter types available



Against-A-Wall Drinking Fountain PLFFAY

Codes

- PLF14FAY
- PLF20FACPY

Standard Features

- PLF14FAY delivers 106 liters of chilled drinking water an hour
- PLF20FACPY delivers 150 liters of chilled drinking water an hour
- Waterways are lead-free in materials and construction
- Dial-A-Drink® bubbler
- Stainless steel top
- Galvanized steel frame (FA models)
- High-efficiency cooling tank and coil Refrigerant R-134a



Free-Standing Drinking Fountain PLFCPY

Code

- PLF10CPY

Standard Features

- Delivers 76 liters of chilled drinking water an hour
- Waterways are lead-free in materials and construction
- Dial-A-Drink bubbler
- Stainless steel top
- Galvanized steel frame (FA models)
- High-efficiency cooling tank and coil Refrigerant R-134a

FOUNTAINS. ■



By being ADA compliant, OASIS ensures that our products are accessible to people with disabilities.

VersaCooler II: energy & water conservation fountains

There's an OASIS Versacooler® II drinking fountain model to fit your specific needs, whether you desire refrigerated or non-refrigerated and/or filtered or non-filtered water. Every fountain basin is designed to eliminate splashing and standing water and features a water-saver bubbler to reduce waste water by 50%.

VersaCooler II PAC - Barrier-Free - Manual



Manual

- PAC
- P8ACY

Standard Features

- P8AC delivers 60 liters of chilled drinking water an hour
- Built-in 100 micron strainer stops Particles before they enter the waterway
- ADA compliant for both adult or child when properly installed
- Waterways are lead-free in materials and construction
- Stainless steel top
- Flexible bubbler guard
- Heavy duty galvanized steel frame
- High efficiency cooling tank and coil
- Refrigerant R-134a
- ANSI/NSF 61
- External stream height adjustment
- Brushed stainless steel finish
- Four push pad activation

VersaCooler II P8VACY - Barrier-Free Vandal Resistant

Code

- PV8ACY

Standard Features

- Delivers 60 liters of chilled drinking water an hour
- Standard features PV8ACY includes all of the P8ACY features plus:
 - Vandal resistant front push button
 - Vandal resistant fasteners
 - Galvanized steel louver and bottom screens



VersaCooler II P8ACTY - Barrier-Free - Electronic

Code

- P8ACTY

Standard Features

- Delivers 60 liters of chilled drinking water an hour
- Standard features P8ACTY includes all of the P8ACY features plus:
 - Sensor equipped for automatic operation
 - Water flow stops after 30 seconds if user does not move away



* More drinking fountains models available in our portfolio



P8ACSLY



PV8ACSLY

Universal Split Level

The advantage of split level Split-level serves both children and adults by adding a fountain to the side for two-level dispensing of drinking water.





***One Box, one cooler, one install.**





Can be installed left low and right high & left high and right low.







TECHNICAL SPECIFICATIONS.

**Bottle Fillers, Pressure Coolers
& Fountains.**

precision
engineering

								
Model	P8EBFY	PEBFY	PV8EBFY	PVEBFY	P8SBFY	PSBFY	PV8SBFY	PVSBF
Type	Electronic Refrigerated combination	Electronic Non-refrigerated combination	Electronic Vandal Resistant Refrigerated combination	Electronic Vandal Resistant Non-refrigerated combination	Manual Refrigerated combination	Manual Non-refrigerated combination	Manual Vandal Resistant Refrigerated combination	Manual Vandal Resistant Non-refrigerated combination
10° C Drinking Water/ 21° C Ambient Air Temp:								
Rated Capacity LPH	60	60	60	Fountain Only	60	Fountain Only	60	Fountain Only
Base Rate LPH	60		60		60		60	
Pre-Cooler	No		No		No		No	
Hot'N Cold™ Model	No		No		No		No	
220-240 Volts, 50/60HZ:								
Compr. HP	1/4		1/4		1/4		1/4	
Full Load Amps	2,2	0,1	2,2	0,1	2,2		2,2	
Rated Watts	457	7	457	7	450		450	
Auto-Off Water Flow	Yes	Yes	Yes	Yes	No	No	No	No
Glass Filler ACC Option								
Cabinet Color Option	Yes	Yes	Yes	No	Yes	Yes	Yes	Yes
Net Wt. Approx (kg)	31	16	31	16	31	16	31	16

								
Model	P8EBFSLY	PEBFSLY	PV8EBFSLY	PVEBFSLY	P8SBFSLY	PSBFSLY	PV8SBFSLY	PVSBSLY
Type	Electronic Refrigerated combination	Electronic Non-refrigerated combination	Electronic Vandal Resistant Refrigerated combination	Electronic Vandal Resistant Non-Refrigerated combination	Manual Refrigerated combination	Manual Non-Refrigerated combination	Manual Vandal Resistant Refrigerated combination	Manual Vandal Resistant Non-Refrigerated combination
10° C Drinking Water/ 21° C Ambient Air Temp:								
Rated Capacity LPH	60	Fountain Only	60	Fountain Only	60	Fountain Only	60	Fountain Only
Base Rate LPH	30		60		60		60	
Pre-Cooler	No		No		No		No	
Hot'N Cold™ Model	No		No		No		No	
220-240 Volts, 50/60HZ:								
Compr. HP	1/4	0,1	1/4	0,1	1/4	450	1/4	450
Full Load Amps	2,2		2,2		2,2		2,2	
Rated Watts	457		457		450		450	
Auto-Off Water Flow	Yes	Yes	Yes	Yes	No	No	No	No
Glass Filler ACC Option	-	-	-	-	-	-	-	-
Cabinet Color Option	Yes	Yes	No	No	Yes	Yes	Yes	Yes
Net Wt. Approx (kg)	43	27	43	27	43	27	43	27

								
Model	PWEBFY	PWSBF	PWSMEBFY	PWSMSBF	M8SBFY	M12SBFY	M8EBFY	M12EBFY
Type	Electronic eye activated Retrofit Kit	Manual Retrofit Kit	Electronic eye	Manual	Barrier-free radii / manual sports bottle filler	Barrier-free radii / manual sports bottle filler	Barrier-free radii / electronic sports bottle filler	Barrier-free radii / electronic sports bottle filler
10° C Drinking Water/ 21° C Ambient Air Temp:								
Rated Capacity LPH	Fountain Only	Fountain Only	Fountain Only	Fountain Only	60	90	90	90
Base Rate LPH					60	90	60	90
Pre-Cooler					No	No	No	No
Hot'N Cold™ Model					No	No	No	No
220-240 Volts, 50/60HZ:								
Compr. HP					1/4	1/3	1/4	1/3
Full Load Amps					2,2	3,7	2,2	3,7
Rated Watts	7		7		340	620	557	627
Auto-Off Water Flow	Yes	No	Yes	No	No	No	Yes	Yes
Glass Filler ACC Option	-	-	-	-	-	-	-	-
Cabinet Color Option	Yes	No	No	No	No	No	No	No
Net Wt. Approx (kg)	5	5	3	3	73	73	73	73

Model	M8CRSBFY	M8CREBFY	P16FAWHDCP	P2KXY	PLF8FAY	PLF8FAHY	PLF14FAY	PLF14FAHY
Type	Barrier-free bi-level radii / manual sports bottle filler	Barrier-free bi-level radii / electronic sports bottle filler	Special Application Free Standing	Free Standing	Against-A-Wall or Free Standing Models	Against-A-Wall or Free Standing Models	Against-A-Wall or Free Standing Models	Against-A-Wall or Free Standing Models
10° C Drinking Water/ 21° C Ambient Air Temp:								
Rated Capacity LPH	60	60	116	20	60	60	106	106
Base Rate LPH	60	60	63	20	60	60	60	60
Pre-Cooler	No	No	Yes	No	No	No	Yes	Yes
Hot'N Cold™ Model	No	No	No	No	No	Yes	No	Yes
220-240 Volts, 50/60HZ:								
Compr. HP	1/4	1/4	1/3	1/20	1/4	1/4	1/4	1/4
Full Load Amps	2,2	2,2	5.2	0.6	2.5	4.7	2.5	4.7
Rated Watts	340	557	600	90	320	820	320	820
Auto-Off Water Flow	No	Yes	-	-	-	-	-	-
Glass Filler ACC Option	-	-	Yes	Yes	Yes	No	Yes	No
Cabinet Color Option	No	No		Yes	Yes	Yes	Yes	Yes
Net Wt. Approx (kg)	82	84	44	22	43	44	44	45



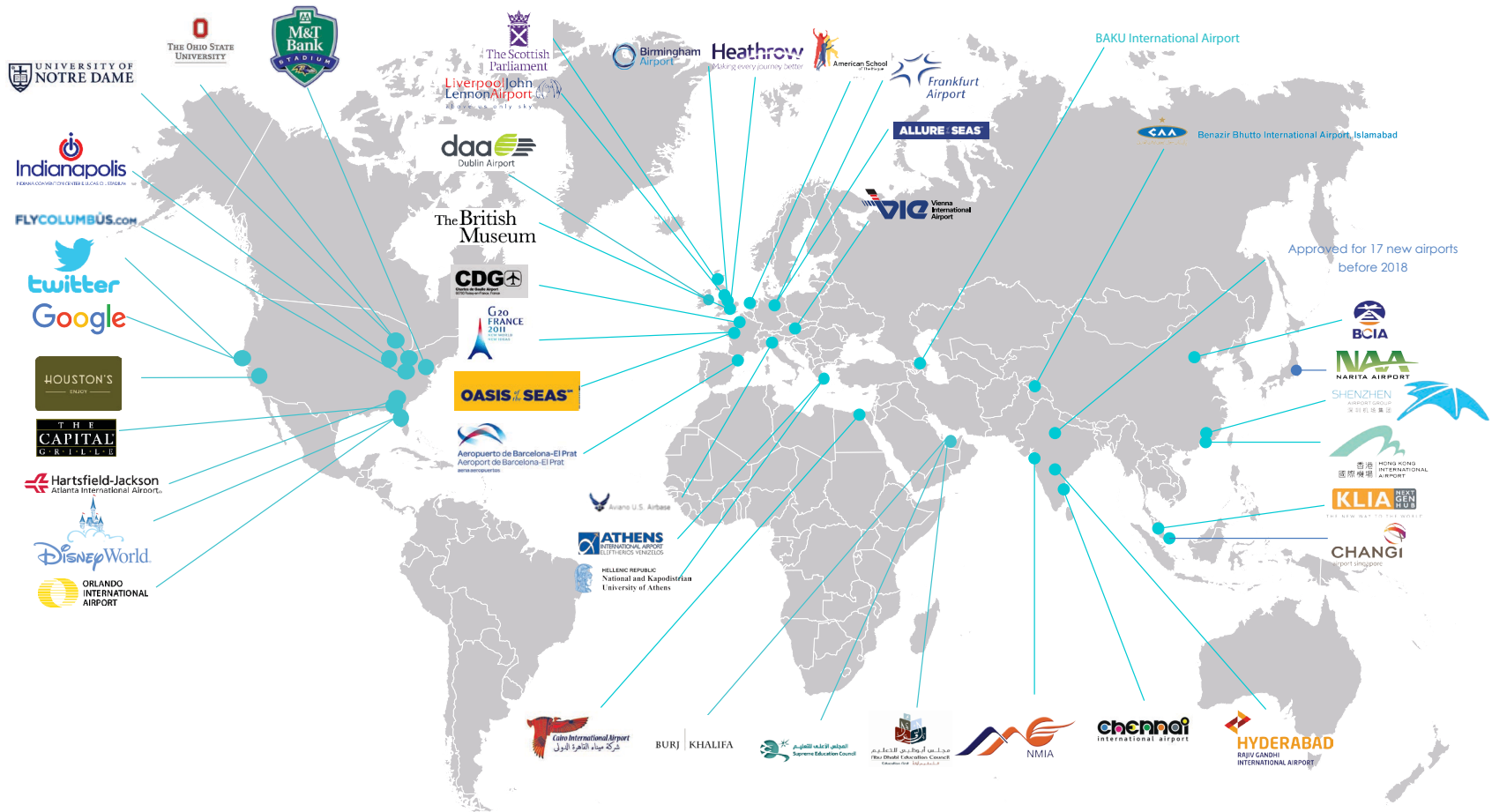
Model	PLF20FACPY	PLF3CPY	PLF10CPY	P8ACY	PAC	P8ACSLY	PACSL
Type	Free Standing Large Capacity Water Cooler	Free Standing Models	Free Standing Models	Barrier Free	Barrier Free	Barrier Free, Split Level	Barrier Free, Split Level
10° C Drinking Water/ 21° C Ambient Air Temp					Fountain Only		Fountain Only
Rated Capacity LPH	150	22	76	60		60	
Base Rate LPH	80	8.5	76			60	
Pre-Cooler	Yes	No	No	No		No	
Hot*N Cold™ Model	No	No	No	No		No	
220-240 Volts, 50/60HZ							
Compr. HP	1/2	1/4	1/4	1/4		1/4	
Full Load Amps	3.0	1.2	2.6	2.2		2.2	
Rated Watts	600	170	500	450		450	
Auto-Off Water Flow	-	-	-	-	-	-	-
Glass Filler ACC. Option	Yes	Yes	Yes	Yes	Yes	Yes	Yes
Cabinet Color Option	No	Yes	Yes	Yes	Yes	Yes	Yes
Net Wt. Approx (kg)	41	30	32	27	11	38	23



Model	P8ACTY	PV8ACY	PV8ACSLY
Type	Barrier Free	Barrier Free	Barrier Free, Split Level
10° C Drinking Water/ 21° C Ambient Air Temp			
Rated Capacity LPH	60	60	60
Base Rate LPH	60	60	60
Pre-Cooler	No	No	No
Hot'N Cold™ Model	No	No	No
220-240 Volts, 50/60HZ			
Compr. HP	1/4	1/4	1/4
Full Load Amps	2.2	2.2	2.2
Rated Watts	450	450	450
Auto-Off Water Flow	-	-	-
Glass Filler ACC. Option	Yes	No	No
Cabinet Color Option	Yes	No	No
Net Wt. Approx (kg)	27	27	38



PROMINENT PLACEMENT.



ANTIMICROBIAL PROTECTION.

Travelmath found the button on a drinking fountain has 48819 colony-forming units per square meter – far worse than the lock on your bathroom stall. Only OASIS builds permanent protection into its products.

AntiMicrobial Protection Two Ways

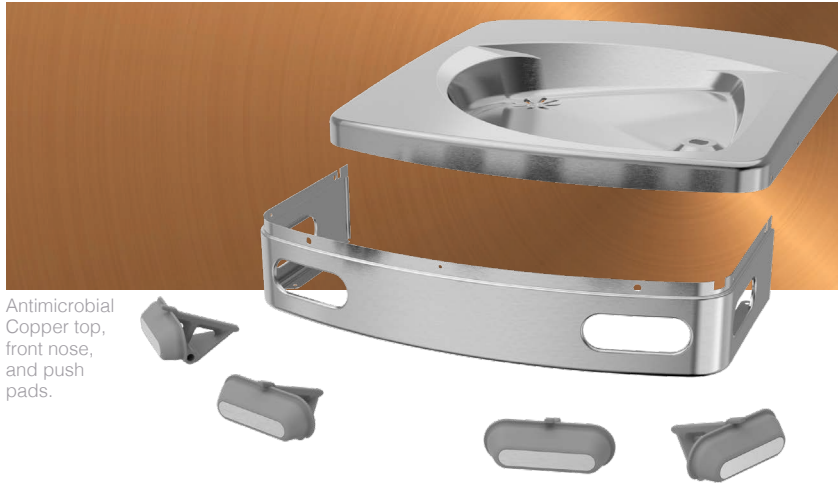
- On metal surfaces, we offer optional antimicrobial copper components to fight germs, bacteria, and the spread of illness.
- For plastic components, optional FRESHIELD reduces the growth of micro-organisms and mildew, protecting surfaces from discoloration, odors, and degradation.

Together, they form a germ-busting dynamic duo to help protect the health and wellness of users of our products.



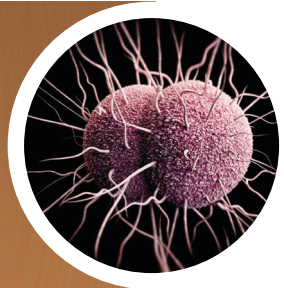


ANTIMICROBIAL COPPER punches holes in the membrane of bacteria at the cellular level, effectively destroying them. The popularity of copper surfaces to replace traditional touch points in hospitals and other critical care industries is a testament to the natural anti-microbial effectiveness of copper!



Antimicrobial Copper top, front nose, and push pads.

By choosing fixtures and other touch surfaces made from antimicrobial copper, you can continuously kill pathogenic microbes and provide an additional weapon in the fight against infections.



We manufacture our plastic components with FRESHIELD, our exclusive silver-based antimicrobial compound. Like copper, the antimicrobial ability of silver has been known for thousands of years. We simply harness nature to make yours a safer hydration experience.



FILTERS.



The OASIS green filter range of products are tested in accordance with NSF/ANSI Standard 42 for Chlorine, Taste & Odour and, where stated, NSF/ANSI Standard 53 for Cyst.



EZ Clip



EZ Clip In-line green filter

Connected to flexible water tubing with a simple push- into-place fitting at the top and bottom of the filter. The filter body is secured to the wall by pushing it into a C-Clip. Ideal in situations where simplicity and space are a priority.

EZ Turn



EZ Turn Quarter-turn green filter

Connected to flexible water tubing with a simple push-into-place fitting at the water entry and exit valves in the head of the filter. A no-spill valve allows to disconnect the filter body from the filter head without spilling any water.

Connected to flexible water tubing 1/4"



Wide range of filter media available

Media Type	Micron Rating [μ]	CTO	Scale Reduction	Lead Reductions	Sediment, Rust, Sand, Stones, Particles Removal	Improves Taste & Odor	Cyst Reduction	Bacteriostatic Properties	Removes Viruses	Pharmaceutical & Chemical Waste Removed
Sediment	5	-	-	-	+	-	-	-	-	-
Carbon Block	1	+	-	-	+	+	-	-	-	-
Carbon / Phosphate	1	+	+	-	+	+	-	-	-	-
Carbon / Lead / Silver	0.5	+	-	+	+	+	+	+	-	-
Carbon / Lead / Silver / Phosphate	0.5	+	+	+	+	+	+	+	-	-
Ceramic	0.5	-	-	-	+	-	+	+	-	-
galaxi	0.5	+	-	+	+	+	+	+	-	-
galaxi / Phosphate	0.5	+	+	+	+	+	+	+	-	-
remedi	Equiv. 0.02	+	-	+	+	+	+	+	+	+
remedi / Photosphate	Equiv. 0.02	+	+	+	+	+	+	+	+	+



- Eco-Friendly
- Economical
- Clean, Healthy & Tasty Water
- Easy to Install & Maintain
- Customisable
- Outside-In

Filtration for a maximum filtration efficiency and a minimal drop in pressure

POINT OF USE & BOTTLE COOLERS.

Whether you choose direct-plumbed point-of-use or convenient bottle coolers, OASIS offers options to satisfy every budget and fulfill every need – as well as every bottle and cup size. Innovative features provide versatility, ease of use, and helpful technology. In modern designs or simple classics, every model is built for reliable daily use.

KaliX LUXE



- Multiple water options.
- Two piece direct chill pressure vessel for ease of service.
- Removable front panel for easy access to the filters.
- Space for filling sports bottles, carafes.
- Integrated cup dispenser (or flat top with no cup dispenser).
- Soft touch buttons with indicator light.
- Removable self-draining drip tray.
- Cold water performance: 20 litres per hour.
- Hot Water Performance: 7.9 litres per hour.

QUARTZ POU



- Stainless Steel Sides & Lower Front Panel with ABS injection moulded trim.
- Removable reservoir made of HDPE for easy sanitization.
- Service friendly Hot Tank.
- Adjustable cold water temperature.
- Water level controlled by dual float system (POU models).
- Easy access to filters (POU models).
- Cold water performance: 4.6 litres per hour.
- Hot Water Performance: 7.9 litres per hour.
- Custom panel colours available.



QUARRTZ

- Stainless Steel Sides & Lower Front Panel with ABS injection moulded trim.
- Removable reservoir made of HDPE for easy sanitization.
- Service friendly Hot Tank.
- Adjustable cold water temperature.
- Cold water performance: 4.6 litres per hour.
- Hot Water Performance: 7.9 litres per hour.
- Custom panel colours available.
- Water Guard for the effective elimination of bottle spills.



With Carbonated Water

CO2oler ULTRA LUXE

- Pressure Vessel Direct Chill System combines with a specially designed CO₂/water mixer for state of the art chilling and carbonation performance.
- Delivers a fresh cold drink every time.
- Virtually continuous delivery of sparkling water.
- 20 litres of CO₂/cold water per hour.
- Water carbonation level at 5.6 g/l similar to leading bottled brands.
- 1.5 kg CO₂ cylinder makes 260 litres of carbonated water.
- Electronic controls insure easy start up and consistent water flow.
- LED lighted colour coded activation buttons for simplicity of use.
- Proven service-friendly OASIS two piece hot tank provides 9 litres of hot water per hour.
- Water Guard for the effective elimination of bottle spills.



MIRAGE

- The MIRAGE POU is the stylish addition to any contemporary kitchen or break room.
- Available in both black and silver.
- Easily converted from bottled cooler to POU with bottom load access or connect direct to a water line.
- This flexible dispenser provides hot, cold and ambient water.



rfx

- The blow-moulded polyethylene body.
- Removable reservoir made of HDPE for easy sanitization.
- Cold water performance: 4.6 litres per hour.
- Hot Water Performance: 7.9 litres per hour.
- Water Guard for the effective elimination of bottle spills.

SUPPORT AFTER THE SALE.

Being there for customers after the sale is a hallmark of our service. We value lasting connections and believe in spreading the messages of sustainability, purity, and hydration. We can help your HR team improve tie-in with health and wellness initiatives and promote broader buy-in to corporate sustainability goals.

OASIS can supply you with branded display items, articles, and other internal communications to raise awareness about healthy hydration, choosing water over sugary drinks, and meeting green initiatives.



HYDRATION AWARENESS.

EMPLOYEE ENGAGEMENT

Employee buy-in is vital to successful corporate sustainability campaigns. Sustainable hydration makes green initiatives more personal. In short, when your employees see that they are directly benefiting from sustainability, they will be more likely to support it.



READY-MADE
ARTICLES

BREAK ROOM DISPLAYS

OASIS can supply you with branded display items for break rooms to raise awareness about water-related topics.

READY-MADE ARTICLES

Because consistent communication to employees is so important, we've created a ready library of articles for your use. Feature them on your company intranet, in newsletters, emails, and on other employee-facing communications.

ALWAYS KNOW WHEN YOUR FILTER NEEDS CHANGING

Our “smart” water products can let everyone know when a water filter has reached the end of its service life. When everyone knows the status of the filter, filter-change protocols are more steadfastly adhered to.



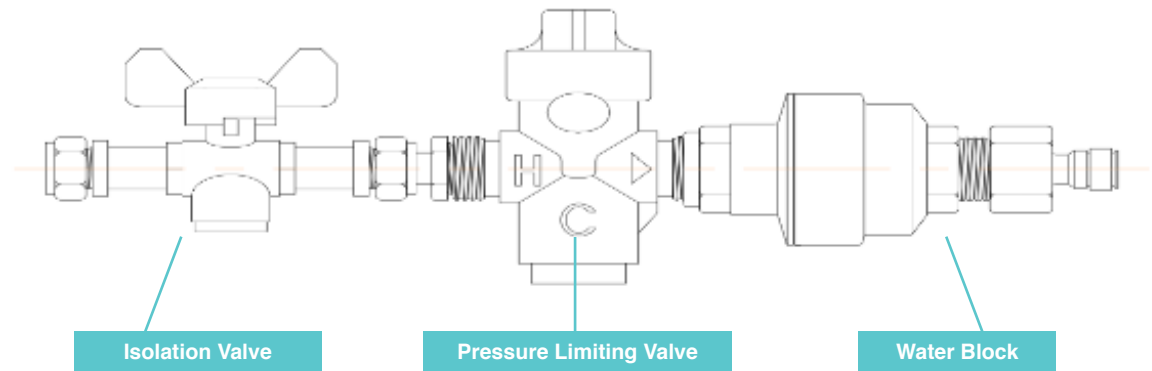
Bottle counter shows how many times reusable bottles have been refilled.

Filter monitor indicates when it is time to change the filter.

INSTALLATION KIT. ■

OASIS POU COOLER INSTALLATION KIT
Compression Fitting Version
034653-003

- This kit is an 'all in one rail', which when properly installed will regulate the feed water used to supply a water dispensing device.
- The kit includes an isolation valve with double non return, a pressure limiting valve set at 3 bar and a water block, which will stop the water flow if a pre set volume has been exceeded. The inlet of the kit is 15mm compression and the outlet is 1/4" push fit.
- This kit should only be fitted to a mains cold water supply / boosted mains, not a tank fed supply.
- The kit features twin 'type approved' non return valves and thereby complies with the current WRAS / EPDWA regulations for supplying coolers and carbonators.
- *For further details consult your supplier.*
- *This kit should be installed by a competent qualified person.*



Installation Procedure

The feed water kit should be fitted to a suitable 15mm mains cold water pipe made of copper. Alternative kits are available for plastic pipe work, please consult your supplier. The pipe work should be clean, free from bends / dents and should not be painted. The kit should be mounted vertically and in a position to allow for the access to individual components, for altering the settings.

Altering The Settings

To alter the maximum feed water pressure, turn the slot on top of the chrome pressure limiting valve either clock / anti – clockwise.

To alter the maximum volume of water to be discharged in any given instance, firstly remove the 3/4" x 1/4" adaptor from the outlet of the grey water block device. Inside the outlet there is a pointer that can be aligned with one of the figures around the circumference. Each figure equates to 1 gallon. A standard kit is set on 2 (i.e. 9 litres). The maximum setting is approximately 50 litres.

OASIS IRELAND

Bunree Industrial Estate,
Ballina, Co. Mayo, F26 D5R3,
Ireland.
+353 96 71222

OASIS POLAND

ul. Gutenberga 20,
44-164, Gliwice, Poland
+48 32 332 65 01

www.oasis.ie

info@oasis.ie